

**SCREENING REPORT FOR AN ENVIRONMENTAL AUTHORIZATION AS
REQUIRED BY THE 2014 EIA REGULATIONS – PROPOSED SITE
ENVIRONMENTAL SENSITIVITY**

EIA Reference number: TBD

Project name: Umbila Emoyeni Electrical Grid Infrastructure

Project title: Umbila Emoyeni Electrical Grid Infrastructure

Date screening report generated: 12/05/2022 10:38:22

Applicant: Emoyeni Renewable Energy (Pty) Ltd

Compiler: Savannah Environmental (Pty) Ltd

Compiler signature:
.....

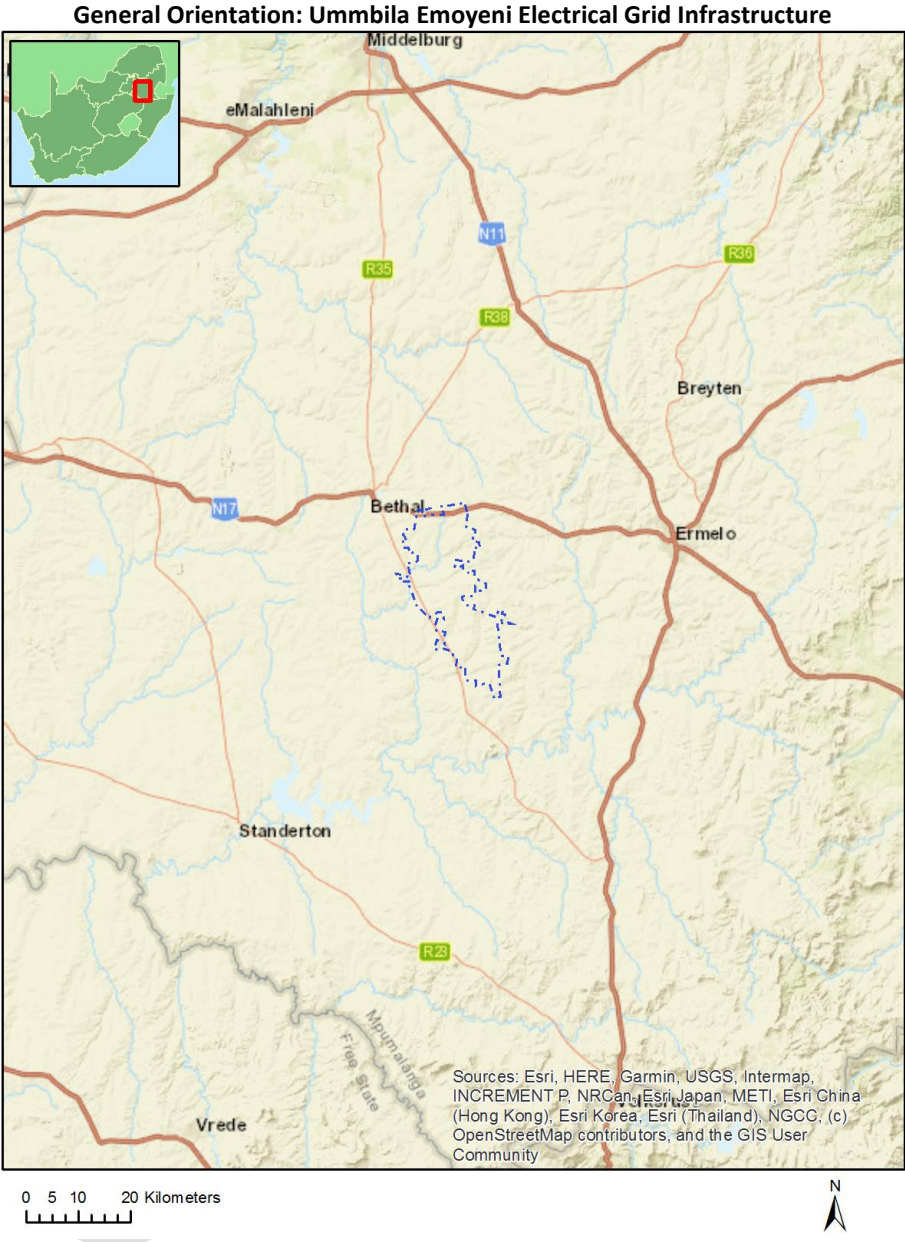
Application Category: Utilities Infrastructure | Electricity | Distribution and Transmission | Powerline

Table of Contents

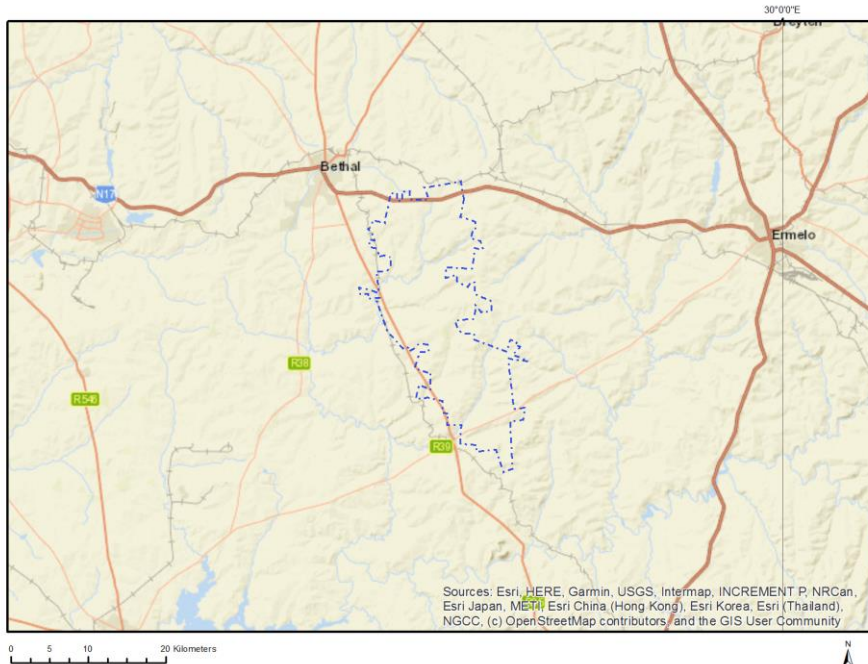
Proposed Project Location	3
Orientation map 1: General location	3
Map of proposed site and relevant area(s)	4
Cadastral details of the proposed site	4
Wind and Solar developments with an approved Environmental Authorisation or applications under consideration within 30 km of the proposed area	10
Environmental Management Frameworks relevant to the application	10
Environmental screening results and assessment outcomes	10
Relevant development incentives, restrictions, exclusions or prohibitions	10
Map indicating proposed development footprint within applicable development incentive, restriction, exclusion or prohibition zones	11
Proposed Development Area Environmental Sensitivity	12
Specialist assessments identified	12
Results of the environmental sensitivity of the proposed area	14
MAP OF RELATIVE AGRICULTURE THEME SENSITIVITY	14
MAP OF RELATIVE ANIMAL SPECIES THEME SENSITIVITY	15
MAP OF RELATIVE AQUATIC BIODIVERSITY THEME SENSITIVITY	16
MAP OF RELATIVE ARCHAEOLOGICAL AND CULTURAL HERITAGE THEME SENSITIVITY	17
MAP OF RELATIVE CIVIL AVIATION THEME SENSITIVITY	18
MAP OF RELATIVE DEFENCE THEME SENSITIVITY	19
MAP OF RELATIVE PALEONTOLOGY THEME SENSITIVITY	20
MAP OF RELATIVE PLANT SPECIES THEME SENSITIVITY	21
MAP OF RELATIVE TERRESTRIAL BIODIVERSITY THEME SENSITIVITY	22

Proposed Project Location

Orientation map 1: General location



Map of proposed site and relevant area(s)



Cadastral details of the proposed site

Property details:

No	Farm Name	Farm/ Erf No	Portion	Latitude	Longitude	Property Type
1	SPRINGBOKFONTEIN	425	0	26°34'4.51S	29°40'25.01E	Farm
2	VAALBANK	456	0	26°41'19.21S	29°39'17.6E	Farm
3	NAUDEFONTEIN	261	0	26°28'28.25S	29°31'41.69E	Farm
4	RIETFONTEIN	420	0	26°31'55.89S	29°31'35.24E	Farm
5	MORGENZON	466	0	26°44'32.53S	29°35'44.46E	Farm
6	AMAJUBA	482	0	26°45'27.12S	29°43'35.38E	Farm
7	ROODEKRANS	457	0	26°41'27.59S	29°35'40.12E	Farm
8	DURABEL	548	0	26°34'17.12S	29°33'50.27E	Farm
9	BEKKERSPRUIT	423	0	26°32'58.95S	29°36'18.51E	Farm
10	ZEVENFONTEIN	468	0	26°43'25.32S	29°43'1.75E	Farm
11	BRAKFONTEIN SETTLEMENT	268	0	26°30'13.97S	29°39'1.92E	Farm
12	OSHOEK	454	0	26°36'52.84S	29°40'32.54E	Farm
13	GOEDEGEDACHT	458	0	26°38'30.67S	29°35'37.06E	Farm
14	KLIPKRAAL	469	0	26°42'18.67S	29°42'52.44E	Farm
15	HENDRIKSPAN	459	0	26°38'22.05S	29°32'52.43E	Farm
16	SUKKELAAR	421	0	26°34'47.76S	29°31'25.64E	Farm
17	RIETPAN	263	0	26°27'16.5S	29°35'25.66E	Farm
18	EBENHEAZER	455	0	26°38'56.57S	29°39'17.4E	Farm
19	KLIPFONTEIN	422	0	26°35'50.07S	29°36'4.08E	Farm
20	BRAKFONTEIN	452	0	26°40'23S	29°42'48.62E	Farm
21	VLAKFONTEIN -	484	0	26°46'56.99S	29°40'25.95E	Farm
22	TWEEFONTEIN	467	0	26°44'28.81S	29°39'15.89E	Farm
23	GELUKSPLAATS	264	0	26°29'51.68S	29°35'42.7E	Farm
24	NAUDEFONTEIN	261	21	26°29'7.08S	29°33'32.19E	Farm Portion
25	NAUDEFONTEIN	261	22	26°29'32.9S	29°31'13.57E	Farm Portion
26	GELUKSPLAATS	264	0	26°30'22.25S	29°34'23.29E	Farm Portion

27	GELUKSPLAATS	264	2	26°28'42.51S	29°34'35.29E	Farm Portion
28	GELUKSPLAATS	264	9	26°31'0.2S	29°36'40.36E	Farm Portion
29	GELUKSPLAATS	264	13	26°28'56.37S	29°34'23.3E	Farm Portion
30	BRAK FONTEIN SETTLEMENT	268	1	26°29'11.77S	29°38'0.82E	Farm Portion
31	BRAK FONTEIN SETTLEMENT	268	45	26°27'49.77S	29°37'38.93E	Farm Portion
32	NAUDES FONTEIN	261	1	26°28'44.5S	29°33'15.16E	Farm Portion
33	RIETPAN	263	10	26°27'44.85S	29°35'51.07E	Farm Portion
34	RIETPAN	263	5	26°27'47.26S	29°36'49.42E	Farm Portion
35	GELUKSPLAATS	264	8	26°30'34.81S	29°35'48.76E	Farm Portion
36	GELUKSPLAATS	264	14	26°28'56.09S	29°35'13.34E	Farm Portion
37	GELUKSPLAATS	264	16	26°28'54.67S	29°35'43.65E	Farm Portion
38	NAUDES FONTEIN	261	15	26°29'5.71S	29°32'44.01E	Farm Portion
39	GELUKSPLAATS	264	4	26°28'23.7S	29°37'4.57E	Farm Portion
40	BRAK FONTEIN SETTLEMENT	268	8	26°30'47.12S	29°38'52.85E	Farm Portion
41	BRAK FONTEIN SETTLEMENT	268	13	26°32'5.07S	29°39'31.77E	Farm Portion
42	BRAK FONTEIN SETTLEMENT	268	24	26°27'22.95S	29°38'18.31E	Farm Portion
43	NAUDES FONTEIN	261	25	26°29'57.67S	29°31'35E	Farm Portion
44	NAUDES FONTEIN	261	70	26°28'57.93S	29°33'14.4E	Farm Portion
45	RIETPAN	263	11	26°27'21.56S	29°35'20.66E	Farm Portion
46	GELUKSPLAATS	264	6	26°31'35.1S	29°36'36.13E	Farm Portion
47	GELUKSPLAATS	264	3	26°28'28.37S	29°35'49.83E	Farm Portion
48	GELUKSPLAATS	264	15	26°28'55.57S	29°35'34.86E	Farm Portion
49	BRAK FONTEIN SETTLEMENT	268	10	26°31'20.55S	29°38'0.6E	Farm Portion
50	BRAK FONTEIN SETTLEMENT	268	35	26°30'10.96S	29°38'34.49E	Farm Portion
51	NAUDES FONTEIN	261	24	26°29'52.28S	29°32'6.39E	Farm Portion
52	NAUDES FONTEIN	261	69	26°28'56.54S	29°32'41.71E	Farm Portion
53	RIETPAN	263	2	26°27'38.48S	29°36'47.62E	Farm Portion
54	GELUKSPLAATS	264	18	26°28'38.74S	29°37'3.19E	Farm Portion
55	BRAK FONTEIN SETTLEMENT	268	25	26°28'6.45S	29°37'57.87E	Farm Portion
56	BRAK FONTEIN SETTLEMENT	268	12	26°31'41.12S	29°38'40.65E	Farm Portion
57	RIETKUIL	57	11	26°42'48.14S	29°36'29.3E	Farm Portion
58	NAUDES FONTEIN	261	14	26°30'1.21S	29°33'1.95E	Farm Portion
59	NAUDES FONTEIN	261	71	26°28'57.38S	29°33'44.29E	Farm Portion
60	GELUKSPLAATS	264	5	26°29'32.36S	29°36'32.77E	Farm Portion
61	RIET FONTEIN	420	12	26°30'46.46S	29°32'3.3E	Farm Portion
62	GELUKSPLAATS	264	12	26°29'29.66S	29°34'46.92E	Farm Portion
63	GELUKSPLAATS	264	11	26°31'22.36S	29°34'28.68E	Farm Portion
64	BRAK FONTEIN SETTLEMENT	268	28	26°28'40.71S	29°38'9.41E	Farm Portion
65	BRAK FONTEIN SETTLEMENT	268	34	26°29'30.46S	29°37'59.97E	Farm Portion
66	BRAK FONTEIN SETTLEMENT	268	5	26°29'52.86S	29°37'53.54E	Farm Portion
67	BRAK FONTEIN SETTLEMENT	268	6	26°30'32.09S	29°37'40.2E	Farm Portion
68	GELUKSPLAATS	264	10	26°31'33.85S	29°35'40.69E	Farm Portion
69	GELUKSPLAATS	264	17	26°28'52.28S	29°36'19.91E	Farm Portion
70	BRAK FONTEIN SETTLEMENT	268	7	26°30'38.07S	29°38'14.25E	Farm Portion
71	BRAK FONTEIN SETTLEMENT	268	11	26°31'21.86S	29°37'29.81E	Farm Portion
72	RIET FONTEIN	420	11	26°30'39.26S	29°33'5.51E	Farm Portion

73	RIETFONTEIN	420	13	26°30'41.78S	29°30'32.56E	Farm Portion
74	SUKKELAAR	421	25	26°34'58.91S	29°31'29.77E	Farm Portion
75	SUKKELAAR	421	14	26°36'40.12S	29°32'0.3E	Farm Portion
76	SUKKELAAR	421	37	26°37'2.88S	29°33'4.16E	Farm Portion
77	SUKKELAAR	421	9	26°35'34.9S	29°32'1.45E	Farm Portion
78	SUKKELAAR	421	57	26°34'35.6S	29°31'49.97E	Farm Portion
79	KLIPFONTEIN	422	14	26°35'2.08S	29°35'49.9E	Farm Portion
80	SUKKELAAR	421	6	26°35'24.4S	29°31'5.57E	Farm Portion
81	SUKKELAAR	421	8	26°34'29.33S	29°31'54.11E	Farm Portion
82	SUKKELAAR	421	12	26°36'58.65S	29°32'43.4E	Farm Portion
83	SUKKELAAR	421	12	26°36'40.98S	29°32'58.69E	Farm Portion
84	SUKKELAAR	421	9	26°35'28.8S	29°32'26.43E	Farm Portion
85	SUKKELAAR	421	54	26°35'28.43S	29°32'14.04E	Farm Portion
86	SUKKELAAR	421	55	26°35'4.05S	29°32'3.58E	Farm Portion
87	KLIPFONTEIN	422	7	26°35'24.89S	29°38'9.22E	Farm Portion
88	KLIPFONTEIN	422	10	26°36'15.95S	29°37'39.49E	Farm Portion
89	KLIPFONTEIN	422	2	26°33'55.29S	29°34'25.37E	Farm Portion
90	KLIPFONTEIN	422	11	26°36'50.89S	29°37'53.13E	Farm Portion
91	BEKKERSPRUIT	423	20	26°33'47S	29°36'52.99E	Farm Portion
92	BRAKFONTEIN SETTLEMENT	268	9	26°31'10.44S	29°38'44.86E	Farm Portion
93	RIETFONTEIN	420	2	26°33'11.75S	29°31'21.92E	Farm Portion
94	RIETFONTEIN	420	8	26°33'17.93S	29°33'19.13E	Farm Portion
95	SUKKELAAR	421	22	26°34'42.86S	29°30'46.33E	Farm Portion
96	SUKKELAAR	421	37	26°36'43.21S	29°33'9.93E	Farm Portion
97	SUKKELAAR	421	49	26°37'1.72S	29°33'4.67E	Farm Portion
98	RIETFONTEIN	420	15	26°32'17.47S	29°31'57.86E	Farm Portion
99	SUKKELAAR	421	7	26°35'26.99S	29°33'4.21E	Farm Portion
100	SUKKELAAR	421	10	26°36'0.2S	29°32'44.12E	Farm Portion
101	SUKKELAAR	421	53	26°36'6.71S	29°32'33.2E	Farm Portion
102	SUKKELAAR	421	56	26°34'48.8S	29°31'56.81E	Farm Portion
103	SUKKELAAR	421	1	26°34'27.7S	29°31'21.4E	Farm Portion
104	KLIPFONTEIN	422	8	26°35'39.4S	29°36'34.75E	Farm Portion
105	KLIPFONTEIN	422	12	26°37'5.2S	29°36'32.14E	Farm Portion
106	BEKKERSPRUIT	423	10	26°34'24.98S	29°37'43.46E	Farm Portion
107	BEKKERSPRUIT	423	15	26°32'21.3S	29°37'18.48E	Farm Portion
108	BEKKERSPRUIT	423	16	26°33'18.26S	29°38'3.73E	Farm Portion
109	BEKKERSPRUIT	423	25	26°33'47.79S	29°35'16.1E	Farm Portion
110	RIETFONTEIN	420	23	26°31'13.99S	29°31'10.84E	Farm Portion
111	RIETFONTEIN	420	9	26°32'30.21S	29°33'11.21E	Farm Portion
112	RIETFONTEIN	420	19	26°31'7.09S	29°33'23.96E	Farm Portion
113	RIETFONTEIN	420	14	26°31'39.67S	29°30'32.08E	Farm Portion
114	RIETFONTEIN	420	24	26°31'20.58S	29°30'53.07E	Farm Portion
115	SUKKELAAR	421	21	26°34'21.78S	29°30'50.44E	Farm Portion
116	SUKKELAAR	421	36	26°35'24.37S	29°33'30.94E	Farm Portion
117	SUKKELAAR	421	35	26°35'6.95S	29°32'36.36E	Farm Portion
118	SUKKELAAR	421	51	26°36'24.68S	29°32'43.5E	Farm Portion
119	SUKKELAAR	421	11	26°36'22.26S	29°32'52.22E	Farm Portion
120	SUKKELAAR	421	1	26°34'21.63S	29°31'43.22E	Farm Portion
121	SUKKELAAR	421	58	26°34'26.6S	29°31'43.78E	Farm Portion
122	KLIPFONTEIN	422	18	26°35'22.84S	29°33'49.72E	Farm Portion
123	RIETFONTEIN	420	20	26°32'56.56S	29°32'11.66E	Farm Portion
124	RIETFONTEIN	420	32	26°31'59.22S	29°33'5.2E	Farm Portion
125	RIETFONTEIN	420	22	26°30'51.05S	29°31'18.5E	Farm Portion
126	RIETFONTEIN	420	0	26°32'20.55S	29°29'37.04E	Farm Portion
127	SUKKELAAR	421	5	26°34'39.81S	29°30'5.45E	Farm Portion
128	SUKKELAAR	421	23	26°34'43.01S	29°31'27.69E	Farm Portion
129	SUKKELAAR	421	34	26°34'49.67S	29°33'25.94E	Farm Portion
130	SUKKELAAR	421	39	26°33'46.73S	29°32'5.32E	Farm Portion
131	SUKKELAAR	421	40	26°33'54.76S	29°33'3.46E	Farm Portion

132	SUKKELAAR	421	11	26°36'26.75S	29°32'24.67E	Farm Portion
133	SUKKELAAR	421	52	26°36'31.52S	29°32'46.78E	Farm Portion
134	SUKKELAAR	421	2	26°34'54.36S	29°31'57.57E	Farm Portion
135	KLIPFONTEIN	422	20	26°35'16.03S	29°36'35.27E	Farm Portion
136	KLIPFONTEIN	422	4	26°36'23.05S	29°37'45.67E	Farm Portion
137	KLIPFONTEIN	422	0	26°37'11.82S	29°37'30.27E	Farm Portion
138	BEKKERSPRUIT	423	1	26°33'5.24S	29°34'36.67E	Farm Portion
139	SUKKELAAR	421	43	26°34'51.88S	29°31'53.66E	Farm Portion
140	SUKKELAAR	421	45	26°34'31.73S	29°31'56.39E	Farm Portion
141	SUKKELAAR	421	13	26°37'7.92S	29°32'7.18E	Farm Portion
142	SUKKELAAR	421	15	26°36'8.63S	29°31'33.32E	Farm Portion
143	SUKKELAAR	421	42	26°34'38.41S	29°32'35.57E	Farm Portion
144	SUKKELAAR	421	42	26°35'5.49S	29°32'2E	Farm Portion
145	KLIPFONTEIN	422	16	26°36'58.21S	29°35'55.58E	Farm Portion
146	KLIPFONTEIN	422	23	26°34'51.83S	29°34'35.14E	Farm Portion
147	BEKKERSPRUIT	423	19	26°34'2.6S	29°36'10.5E	Farm Portion
148	OSHOEK	454	3	26°38'23.29S	29°41'54.62E	Farm Portion
149	VAALBANK	456	2	26°40'40.32S	29°40'27.02E	Farm Portion
150	VAALBANK	456	4	26°41'42.4S	29°38'46.35E	Farm Portion
151	ROODEKRANS	457	8	26°41'2.98S	29°34'11.86E	Farm Portion
152	RIETFONTEIN	420	16	26°31'21.75S	29°31'47.56E	Farm Portion
153	RIETFONTEIN	420	27	26°32'21.95S	29°31'15.08E	Farm Portion
154	RIETFONTEIN	420	10	26°31'34.16S	29°32'58.91E	Farm Portion
155	RIETFONTEIN	420	18	26°31'46S	29°31'47.28E	Farm Portion
156	SUKKELAAR	421	38	26°36'4.66S	29°33'15.25E	Farm Portion
157	SUKKELAAR	421	50	26°36'45.86S	29°32'55.66E	Farm Portion
158	SUKKELAAR	421	10	26°36'7.66S	29°32'14.66E	Farm Portion
159	SUKKELAAR	421	2	26°34'13.99S	29°32'32.82E	Farm Portion
160	SUKKELAAR	421	4	26°35'38.65S	29°31'31.06E	Farm Portion
161	KLIPFONTEIN	422	9	26°36'16.04S	29°36'22.13E	Farm Portion
162	KLIPFONTEIN	422	19	26°35'1.93S	29°36'43.73E	Farm Portion
163	BEKKERSPRUIT	423	13	26°31'48.98S	29°35'30.69E	Farm Portion
164	BEKKERSPRUIT	423	22	26°32'32.52S	29°34'24.09E	Farm Portion
165	BEKKERSPRUIT	423	17	26°34'28.4S	29°38'20.01E	Farm Portion
166	KLIPFONTEIN	422	13	26°36'20.97S	29°34'43.89E	Farm Portion
167	BEKKERSPRUIT	423	9	26°34'0.55S	29°37'47.36E	Farm Portion
168	BEKKERSPRUIT	423	3	26°33'34.65S	29°36'52.26E	Farm Portion
169	OSHOEK	454	12	26°35'30.34S	29°40'5.42E	Farm Portion
170	EBENHEAZER	455	3	26°39'20.07S	29°40'19.11E	Farm Portion
171	EBENHEAZER	455	2	26°38'42.91S	29°40'29.85E	Farm Portion
172	VAALBANK	456	16	26°42'40.86S	29°38'7.48E	Farm Portion
173	VAALBANK	456	3	26°41'30.64S	29°40'33.04E	Farm Portion
174	VAALBANK	456	14	26°41'2.43S	29°38'48.28E	Farm Portion
175	ROODEKRANS	457	27	26°42'42.6S	29°36'35.69E	Farm Portion
176	ROODEKRANS	457	4	26°42'37.32S	29°36'59.48E	Farm Portion
177	ROODEKRANS	457	6	26°41'31.94S	29°36'10.15E	Farm Portion
178	ROODEKRANS	457	21	26°40'24.92S	29°34'55.77E	Farm Portion
179	GOEDEGEDACHT	458	21	26°37'25.75S	29°34'29.08E	Farm Portion
180	GOEDEGEDACHT	458	17	26°39'10.26S	29°37'30.05E	Farm Portion
181	GOEDEGEDACHT	458	39	26°39'27.8S	29°35'0.52E	Farm Portion
182	BEKKERSPRUIT	423	24	26°32'29.77S	29°35'33.17E	Farm Portion
183	OSHOEK	454	13	26°35'15.12S	29°39'2.33E	Farm Portion
184	VAALBANK	456	1	26°40'9.59S	29°39'45.98E	Farm Portion
185	ROODEKRANS	457	1	26°40'17.73S	29°36'28.15E	Farm Portion
186	ROODEKRANS	457	29	26°42'11.45S	29°36'24.74E	Farm Portion
187	ROODEKRANS	457	30	26°42'6.05S	29°36'21.97E	Farm Portion
188	GOEDEGEDACHT	458	32	26°38'43.43S	29°37'3.16E	Farm Portion
189	GOEDEGEDACHT	458	33	26°37'33.09S	29°35'32E	Farm Portion
190	GOEDEGEDACHT	458	18	26°38'9.56S	29°35'24.26E	Farm Portion
191	GOEDEGEDACHT	458	25	26°38'52.64S	29°35'2.52E	Farm Portion

192	KLIPFONTEIN	422	17	26°34'38.67S	29°35'13.88E	Farm Portion
193	KLIPFONTEIN	422	21	26°35'40.01S	29°34'9.35E	Farm Portion
194	OSHOEK	454	4	26°35'40.83S	29°39'15.32E	Farm Portion
195	ROODEKRANS	457	0	26°42'43.69S	29°34'37.4E	Farm Portion
196	ROODEKRANS	457	34	26°40'17.56S	29°35'6.32E	Farm Portion
197	ROODEKRANS	457	21	26°40'15.23S	29°35'18.67E	Farm Portion
198	GOEDEGEDACHT	458	22	26°37'50.27S	29°34'17.2E	Farm Portion
199	GOEDEGEDACHT	458	29	26°38'18.47S	29°35'50.94E	Farm Portion
200	GOEDEGEDACHT	458	9	26°38'43.44S	29°37'39.08E	Farm Portion
201	GOEDEGEDACHT	458	19	26°37'32.33S	29°34'50E	Farm Portion
202	GOEDEGEDACHT	458	40	26°39'48.06S	29°35'6.61E	Farm Portion
203	BEKKERSPRUIT	423	5	26°33'34.49S	29°34'23.36E	Farm Portion
204	BEKKERSPRUIT	423	12	26°31'39.11S	29°34'20.94E	Farm Portion
205	BRAKFONTein	452	4	26°39'22.43S	29°42'21.52E	Farm Portion
206	OSHOEK	454	7	26°37'37.77S	29°40'27.45E	Farm Portion
207	OSHOEK	454	17	26°36'13S	29°39'39.43E	Farm Portion
208	EBENHEAZER	455	0	26°38'25.6S	29°38'56.67E	Farm Portion
209	VAALBANK	456	12	26°40'59.44S	29°37'49.14E	Farm Portion
210	VAALBANK	456	17	26°42'35.27S	29°40'46.23E	Farm Portion
211	VAALBANK	456	19	26°42'6.86S	29°40'39.98E	Farm Portion
212	VAALBANK	456	5	26°41'39.63S	29°39'23.64E	Farm Portion
213	VAALBANK	456	7	26°42'25.88S	29°40'8.14E	Farm Portion
214	ROODEKRANS	457	28	26°42'25.42S	29°36'29.24E	Farm Portion
215	ROODEKRANS	457	18	26°42'18.95S	29°36'33.54E	Farm Portion
216	ROODEKRANS	457	6	26°41'44.43S	29°35'27.89E	Farm Portion
217	ROODEKRANS	457	32	26°41'8.74S	29°35'41.33E	Farm Portion
218	GOEDEGEDACHT	458	8	26°38'8.31S	29°37'8.93E	Farm Portion
219	GOEDEGEDACHT	458	2	26°39'46.55S	29°36'36.44E	Farm Portion
220	HENDRIKSPAN	459	17	26°37'19.08S	29°33'14.41E	Farm Portion
221	ROODEKRANS	457	24	26°41'34.46S	29°34'34.79E	Farm Portion
222	ROODEKRANS	457	25	26°42'13.81S	29°35'48.62E	Farm Portion
223	ROODEKRANS	457	25	26°42'2.94S	29°36'22.22E	Farm Portion
224	GOEDEGEDACHT	458	31	26°38'27.68S	29°36'23.19E	Farm Portion
225	GOEDEGEDACHT	458	36	26°38'11.23S	29°35'1.88E	Farm Portion
226	GOEDEGEDACHT	458	38	26°39'37.13S	29°35'3.13E	Farm Portion
227	GOEDEGEDACHT	458	3	26°38'11.89S	29°34'36.42E	Farm Portion
228	GOEDEGEDACHT	458	11	26°39'28.38S	29°36'58.83E	Farm Portion
229	GOEDEGEDACHT	458	41	26°38'29.2S	29°34'19.66E	Farm Portion
230	BEKKERSPRUIT	423	6	26°33'20.57S	29°35'51.56E	Farm Portion
231	BEKKERSPRUIT	423	8	26°33'30.96S	29°37'36.68E	Farm Portion
232	BEKKERSPRUIT	423	14	26°32'31.28S	29°36'42.36E	Farm Portion
233	BEKKERSPRUIT	423	4	26°32'24.66S	29°36'4.51E	Farm Portion
234	SPRINGBOKFONTEIN	425	4	26°34'26.93S	29°39'3.01E	Farm Portion
235	SPRINGBOKFONTEIN	425	9	26°32'55.45S	29°38'44.41E	Farm Portion
236	BRAKFONTein	452	2	26°40'41.88S	29°41'40.65E	Farm Portion
237	OSHOEK	454	21	26°37'27.1S	29°38'39.72E	Farm Portion
238	OSHOEK	454	1	26°36'31.5S	29°39'7.13E	Farm Portion
239	VAALBANK	456	18	26°42'41.33S	29°39'17.84E	Farm Portion
240	VAALBANK	456	15	26°42'3.71S	29°38'17.3E	Farm Portion
241	ROODEKRANS	457	26	26°42'54.33S	29°36'40.07E	Farm Portion
242	ROODEKRANS	457	22	26°41'7.04S	29°36'37.14E	Farm Portion
243	ROODEKRANS	457	23	26°40'48.38S	29°35'58.31E	Farm Portion
244	BEKKERSPRUIT	423	0	26°32'5.42S	29°34'29.56E	Farm Portion
245	OSHOEK	454	18	26°38'10.02S	29°41'12.92E	Farm Portion
246	OSHOEK	454	6	26°37'45.85S	29°39'41.05E	Farm Portion
247	EBENHEAZER	455	1	26°39'22.42S	29°38'31.26E	Farm Portion
248	VAALBANK	456	8	26°41'43.22S	29°38'29.59E	Farm Portion
249	VAALBANK	456	11	26°40'15.98S	29°38'19.02E	Farm Portion
250	ROODEKRANS	457	7	26°41'0.22S	29°34'52.35E	Farm Portion
251	ROODEKRANS	457	18	26°42'24.88S	29°36'14.94E	Farm Portion

252	ROODEKRANS	457	31	26°41'37.02S	29°36'2.24E	Farm Portion
253	GOEDEGEDACHT	458	27	26°37'30.54S	29°35'51.57E	Farm Portion
254	GOEDEGEDACHT	458	5	26°37'51.07S	29°37'36.47E	Farm Portion
255	GOEDEGEDACHT	458	26	26°38'40.56S	29°35'49.83E	Farm Portion
256	GOEDEGEDACHT	458	0	26°37'49.14S	29°38'13.84E	Farm Portion
257	GOEDEGEDACHT	458	48	26°38'13.88S	29°33'45.69E	Farm Portion
258	GOEDEGEDACHT	458	23	26°38'17.47S	29°33'39.8E	Farm Portion
259	GOEDEGEDACHT	458	49	26°37'48.89S	29°33'31.46E	Farm Portion
260	KLIPFONTEIN	422	22	26°36'2.02S	29°34'14.51E	Farm Portion
261	KLIPFONTEIN	422	5	26°34'39.45S	29°36'49.12E	Farm Portion
262	KLIPFONTEIN	422	6	26°35'18.42S	29°37'31.15E	Farm Portion
263	KLIPFONTEIN	422	3	26°36'51.16S	29°34'56.35E	Farm Portion
264	BEKKERSPRUIT	423	2	26°32'24.08S	29°38'2.2E	Farm Portion
265	BEKKERSPRUIT	423	7	26°33'16.7S	29°36'50.56E	Farm Portion
266	BEKKERSPRUIT	423	11	26°34'8.81S	29°36'58.28E	Farm Portion
267	BEKKERSPRUIT	423	23	26°32'1.83S	29°35'24.89E	Farm Portion
268	OSHOEK	454	20	26°37'31.44S	29°39'8.45E	Farm Portion
269	VAALBANK	456	13	26°42'22.12S	29°40'2.7E	Farm Portion
270	ROODEKRANS	457	4	26°42'37.32S	29°36'59.48E	Farm Portion
271	ROODEKRANS	457	33	26°40'55.93S	29°35'31.97E	Farm Portion
272	ROODEKRANS	457	23	26°40'57.15S	29°35'30.54E	Farm Portion
273	MORGENZON	466	3	26°43'48.25S	29°37'25.64E	Farm Portion
274	MORGENZON	466	7	26°43'13.34S	29°37'5.37E	Farm Portion
275	TWEEFONTEIN	467	7	26°44'17.94S	29°39'15.01E	Farm Portion
276	ZEVENFONTEIN	468	2	26°43'19.23S	29°41'15.41E	Farm Portion
277	GOEDEGEDACHT	458	12	26°39'0.54S	29°36'5.25E	Farm Portion
278	GOEDEGEDACHT	458	15	26°37'22.17S	29°34'4.65E	Farm Portion
279	GOEDEGEDACHT	458	37	26°39'19.68S	29°34'59.69E	Farm Portion
280	GOEDEGEDACHT	458	34	26°37'31.86S	29°35'22.04E	Farm Portion
281	GOEDEGEDACHT	458	10	26°39'6.53S	29°36'57.58E	Farm Portion
282	GOEDEGEDACHT	458	4	26°37'17.27S	29°33'36.2E	Farm Portion
283	TWEEFONTEIN	467	10	26°43'48.16S	29°39'23.92E	Farm Portion
284	HENDRIKSPAN	459	15	26°37'9.48S	29°33'15.71E	Farm Portion
285	TWEEFONTEIN	467	0	26°43'32.5S	29°38'15.31E	Farm Portion
286	TWEEFONTEIN	467	2	26°45'19.67S	29°39'47.8E	Farm Portion
287	GOEDEGEDACHT	458	14	26°39'32.96S	29°35'53.11E	Farm Portion
288	GOEDEGEDACHT	458	16	26°37'40.59S	29°36'19.96E	Farm Portion
289	GOEDEGEDACHT	458	28	26°37'56S	29°35'51.44E	Farm Portion
290	GOEDEGEDACHT	458	13	26°39'15.08S	29°36'2.42E	Farm Portion
291	GOEDEGEDACHT	458	44	26°39'26.22S	29°34'29.03E	Farm Portion
292	GOEDEGEDACHT	458	1	26°39'24.71S	29°34'0.8E	Farm Portion
293	GOEDEGEDACHT	458	4	26°37'59.67S	29°33'32.32E	Farm Portion
294	KLIPKRAAL	469	4	26°42'35.56S	29°42'18.91E	Farm Portion
295	TWEEFONTEIN	467	5	26°45'1.33S	29°40'52.08E	Farm Portion
296	TWEEFONTEIN	467	6	26°43'16.91S	29°39'25.86E	Farm Portion
297	AMAJUBA	482	1	26°44'44.12S	29°41'39.81E	Farm Portion
298	AMAJUBA	482	2	26°45'27.97S	29°41'52.52E	Farm Portion
299	KLIPKRAAL	469	3	26°42'5.44S	29°42'25.36E	Farm Portion
300	VLAKFONTEIN -	484	4	26°46'31.54S	29°40'33.92E	Farm Portion
301	TWEEFONTEIN	467	4	26°45'10.04S	29°40'27.7E	Farm Portion
302	KLIPKRAAL	469	7	26°42'27.05S	29°41'12.41E	Farm Portion
303	TWEEFONTEIN	467	1	26°43'55.72S	29°40'26.65E	Farm Portion
304	TWEEFONTEIN	467	8	26°43'8.01S	29°40'25.78E	Farm Portion
305	KLIPKRAAL	469	6	26°42'26.65S	29°41'29.98E	Farm Portion
306	KLIPKRAAL	469	8	26°42'32.85S	29°41'47.14E	Farm Portion
307	KLIPKRAAL	469	1	26°42'20.75S	29°42'24.72E	Farm Portion
308	KLIPKRAAL	469	5	26°42'9.75S	29°41'47.94E	Farm Portion
309		547	11	26°42'40.65S	29°36'36.87E	Farm Portion
310	DURABEL	548	0	26°34'17.12S	29°33'50.27E	Farm Portion
311	GOEDEGEDACHT	458	35	26°37'33.52S	29°35'8.06E	Farm Portion

312	GOEDEGEDACHT	458	21	26°38'9.96S	29°34'2.22E	Farm Portion
313	HENDRIKSPAN	459	15	26°37'57.66S	29°33'5.24E	Farm Portion
314	TWEEFONTEIN	467	3	26°45'21.44S	29°38'51.87E	Farm Portion
315	TWEEFONTEIN	467	9	26°45'3.9S	29°37'58.12E	Farm Portion
316	ZEVENFONTEIN	468	3	26°44'5.22S	29°41'17.91E	Farm Portion

Development footprint¹ vertices:
No development footprint(s) specified.

Wind and Solar developments with an approved Environmental Authorisation or applications under consideration within 30 km of the proposed area

No	EIA Reference No	Classification	Status of application	Distance from proposed area (km)
1	14/12/16/3/3/2/754	Solar PV	Approved	25
2	14/12/16/3/3/2/754	Solar PV	Approved	25

Environmental Management Frameworks relevant to the application

No intersections with EMF areas found.

Environmental screening results and assessment outcomes

The following sections contain a summary of any development incentives, restrictions, exclusions or prohibitions that apply to the proposed development site as well as the most environmental sensitive features on the site based on the site sensitivity screening results for the application classification that was selected. The application classification selected for this report is: **Utilities Infrastructure | Electricity | Distribution and Transmission | Powerline.**

Relevant development incentives, restrictions, exclusions or prohibitions

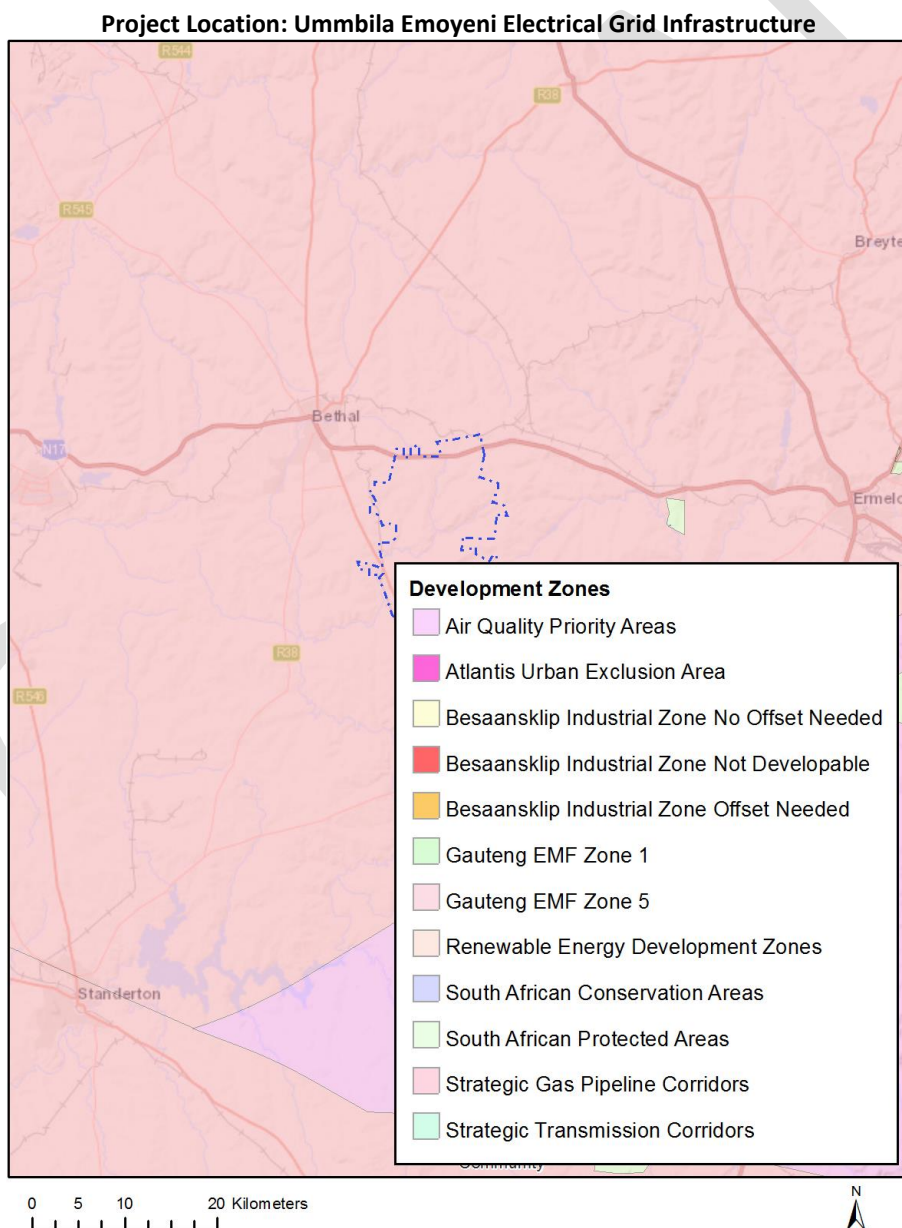
The following development incentives, restrictions, exclusions or prohibitions and their implications that apply to this site are indicated below.

Incentive, restriction or prohibition	Implication
Air	https://screening.environment.gov.za/ScreeningDownloads/DevelopmentZones/HIGH

¹ “development footprint”, means the area within the site on which the development will take place and includes all ancillary developments for example roads, power lines, boundary walls, paving etc. which require vegetation clearance or which will be disturbed and for which the application has been submitted.

Quality-Highveld Priority Area	VELD_PRIORITY_AREA_AQMP.pdf
Strategic Gas Pipeline Corridors -Phase 8: Rompco Pipeline Corridor	https://screening.environment.gov.za/ScreeningDownloads/DevelopmentZones/Combined_GAS.pdf

Map indicating proposed development footprint within applicable development incentive, restriction, exclusion or prohibition zones



Proposed Development Area Environmental Sensitivity

The following summary of the development site environmental sensitivities is identified. Only the highest environmental sensitivity is indicated. The footprint environmental sensitivities for the proposed development footprint as identified, are indicative only and must be verified on site by a suitably qualified person before the specialist assessments identified below can be confirmed.

Theme	Very High sensitivity	High sensitivity	Medium sensitivity	Low sensitivity
Agriculture Theme		X		
Animal Species Theme		X		
Aquatic Biodiversity Theme	X			
Archaeological and Cultural Heritage Theme				X
Civil Aviation Theme		X		
Defence Theme				X
Paleontology Theme	X			
Plant Species Theme			X	
Terrestrial Biodiversity Theme	X			

Specialist assessments identified

Based on the selected classification, and the environmental sensitivities of the proposed development footprint, the following list of specialist assessments have been identified for inclusion in the assessment report. It is the responsibility of the EAP to confirm this list and to motivate in the assessment report, the reason for not including any of the identified specialist study including the provision of photographic evidence of the site situation.

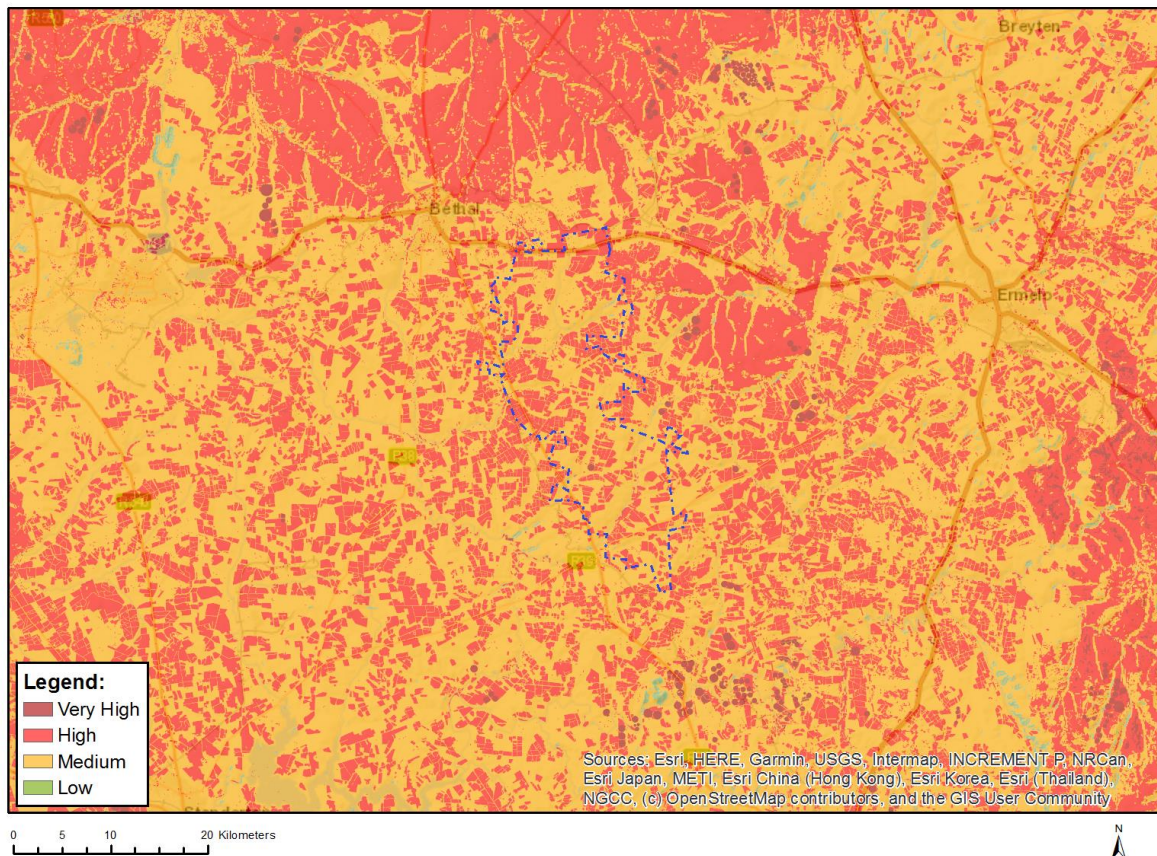
N o	Special ist assess ment	Assessment Protocol
1	Agricultural Impact Assessment	https://screening.environment.gov.za/ScreeningDownloads/AssessmentProtocols/Gazetted_General_Agriculture_Assessment_Protocols.pdf
2	Landscape/Visual Impact Assessment	https://screening.environment.gov.za/ScreeningDownloads/AssessmentProtocols/Gazetted_General_Requirement_Assessment_Protocols.pdf
3	Archaeological and Cultural Heritage Impact Assessment	https://screening.environment.gov.za/ScreeningDownloads/AssessmentProtocols/Gazetted_General_Requirement_Assessment_Protocols.pdf
4	Palaeontology Impact Assessment	https://screening.environment.gov.za/ScreeningDownloads/AssessmentProtocols/Gazetted_General_Requirement_Assessment_Protocols.pdf

5	Terrestrial Biodiversity Impact Assessment	https://screening.environment.gov.za/ScreeningDownloads/AssessmentProtocols/Gazetted Terrestrial Biodiversity Assessment Protocols.pdf
6	Aquatic Biodiversity Impact Assessment	https://screening.environment.gov.za/ScreeningDownloads/AssessmentProtocols/Gazetted Aquatic Biodiversity Assessment Protocols.pdf
7	Avian Impact Assessment	https://screening.environment.gov.za/ScreeningDownloads/AssessmentProtocols/Gazetted Avifauna Assessment Protocols.pdf
8	Civil Aviation Assessment	https://screening.environment.gov.za/ScreeningDownloads/AssessmentProtocols/Gazetted Civil Aviation Installations Assessment Protocols.pdf
9	RFI Assessment	https://screening.environment.gov.za/ScreeningDownloads/AssessmentProtocols/Gazetted General Requirement Assessment Protocols.pdf
10	Geotechnical Assessment	https://screening.environment.gov.za/ScreeningDownloads/AssessmentProtocols/Gazetted General Requirement Assessment Protocols.pdf
11	Plant Species Assessment	https://screening.environment.gov.za/ScreeningDownloads/AssessmentProtocols/Gazetted Plant Species Assessment Protocols.pdf
12	Animal Species Assessment	https://screening.environment.gov.za/ScreeningDownloads/AssessmentProtocols/Gazetted Animal Species Assessment Protocols.pdf

Results of the environmental sensitivity of the proposed area.

The following section represents the results of the screening for environmental sensitivity of the proposed site for relevant environmental themes associated with the project classification. It is the duty of the EAP to ensure that the environmental themes provided by the screening tool are comprehensive and complete for the project. Refer to the disclaimer.

MAP OF RELATIVE AGRICULTURE THEME SENSITIVITY

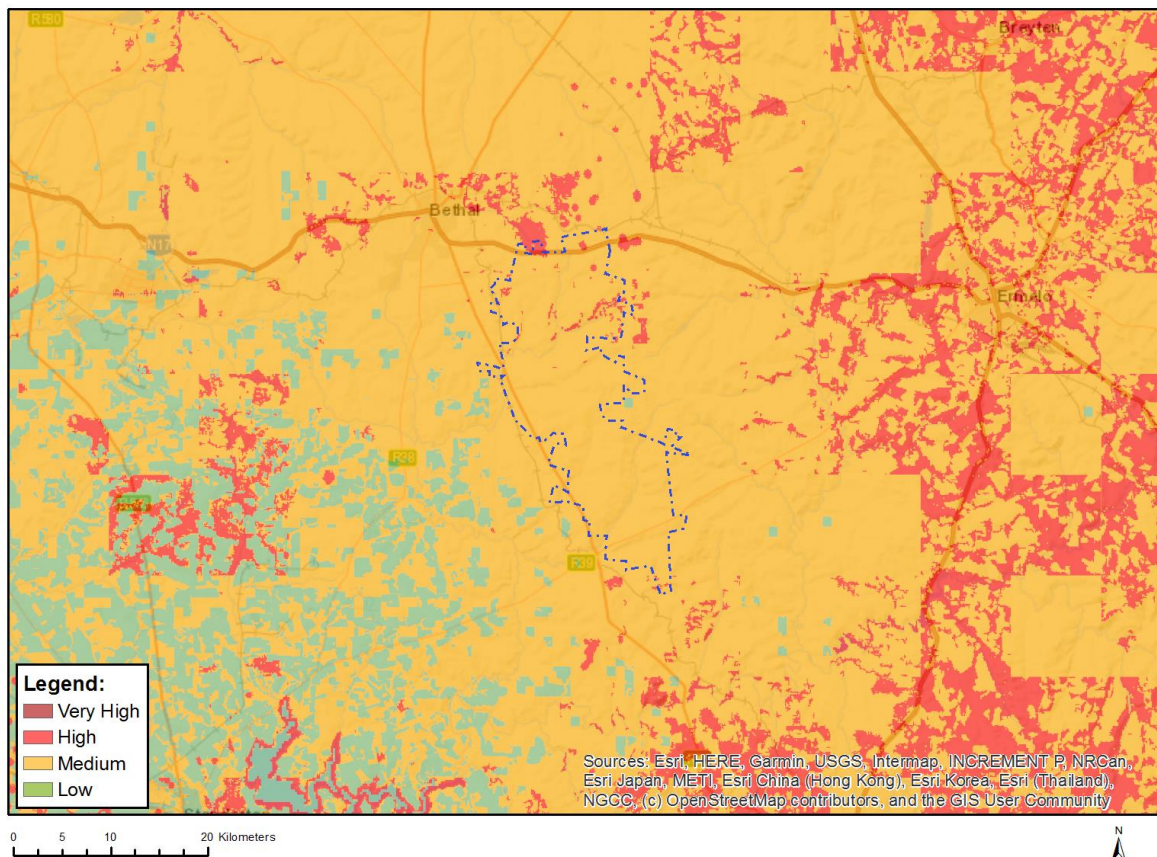


Very High sensitivity	High sensitivity	Medium sensitivity	Low sensitivity
	X		

Sensitivity Features:

Sensitivity	Feature(s)
High	Land capability;09. Moderate-High/10. Moderate-High
High	Annual Crop Cultivation / Planted Pastures Rotation;Land capability;06. Low-Moderate/07. Low-Moderate/08. Moderate
High	Annual Crop Cultivation / Planted Pastures Rotation;Land capability;09. Moderate-High/10. Moderate-High
High	Old Fields;Land capability;06. Low-Moderate/07. Low-Moderate/08. Moderate
High	Old Fields;Land capability;09. Moderate-High/10. Moderate-High
Low	Land capability;01. Very low/02. Very low/03. Low-Very low/04. Low-Very low/05. Low
Medium	Land capability;06. Low-Moderate/07. Low-Moderate/08. Moderate

MAP OF RELATIVE ANIMAL SPECIES THEME SENSITIVITY



Where only a sensitive plant unique number or sensitive animal unique number is provided in the screening report and an assessment is required, the environmental assessment practitioner (EAP) or specialist is required to email SANBI at eiadatarequests@sanbi.org.za listing all sensitive species with their unique identifiers for which information is required. The name has been withheld as the species may be prone to illegal harvesting and must be protected. SANBI will release the actual species name after the details of the EAP or specialist have been documented.

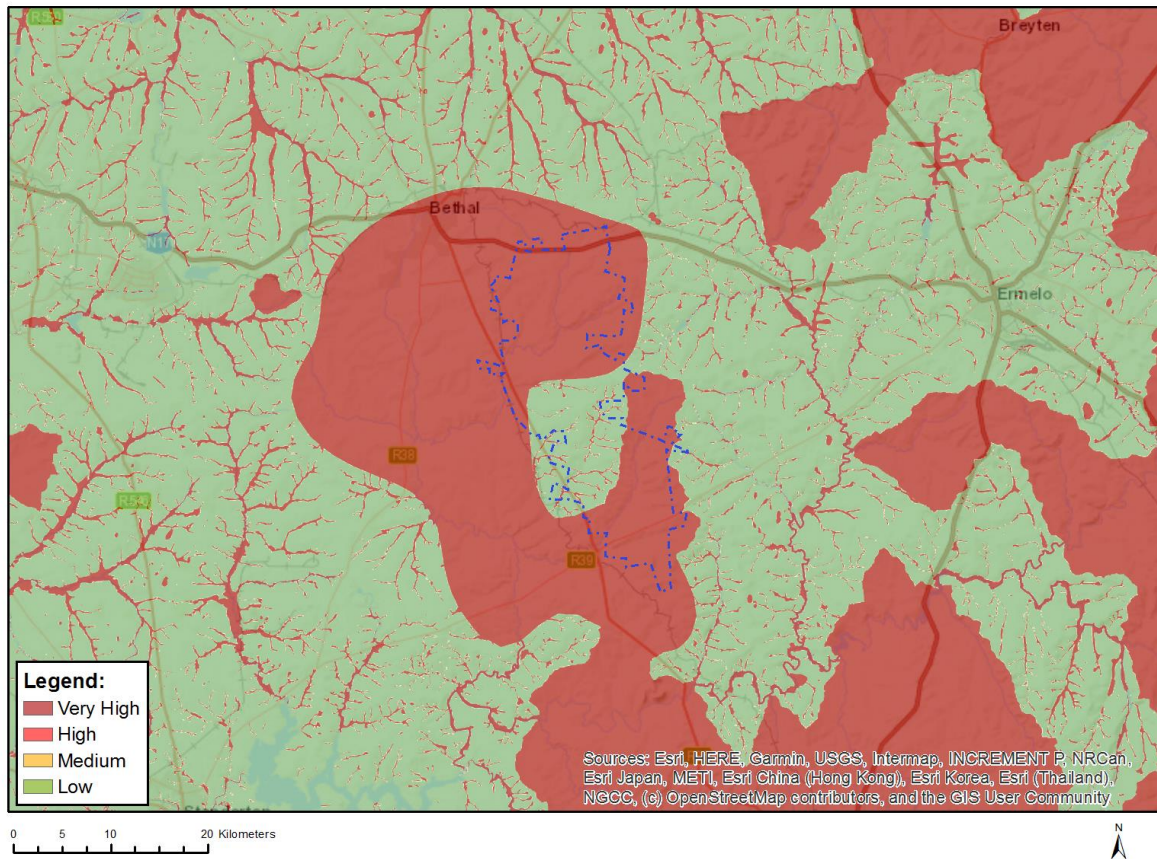
Very High sensitivity	High sensitivity	Medium sensitivity	Low sensitivity
	X		

Sensitivity Features:

Sensitivity	Feature(s)
High	Aves-Balearica regulorum
High	Aves-Sagittarius serpentarius
High	Aves-Geronticus calvus
High	Aves-Mycteria ibis
Medium	Aves-Tyto capensis
Medium	Aves-Hydroprogne caspia
Medium	Aves-Sagittarius serpentarius
Medium	Aves-Geronticus calvus
Medium	Aves-Eupodotis senegalensis
Medium	Aves-Balearica regulorum
Medium	Aves-Circus ranivorus
Medium	Insecta-Lepidochrysops procera
Medium	Mammalia-Crociodura maquassiensis

Medium	Mammalia-Hydrictis maculicollis
Medium	Mammalia-Ourebia ourebi ourebi

MAP OF RELATIVE AQUATIC BIODIVERSITY THEME SENSITIVITY

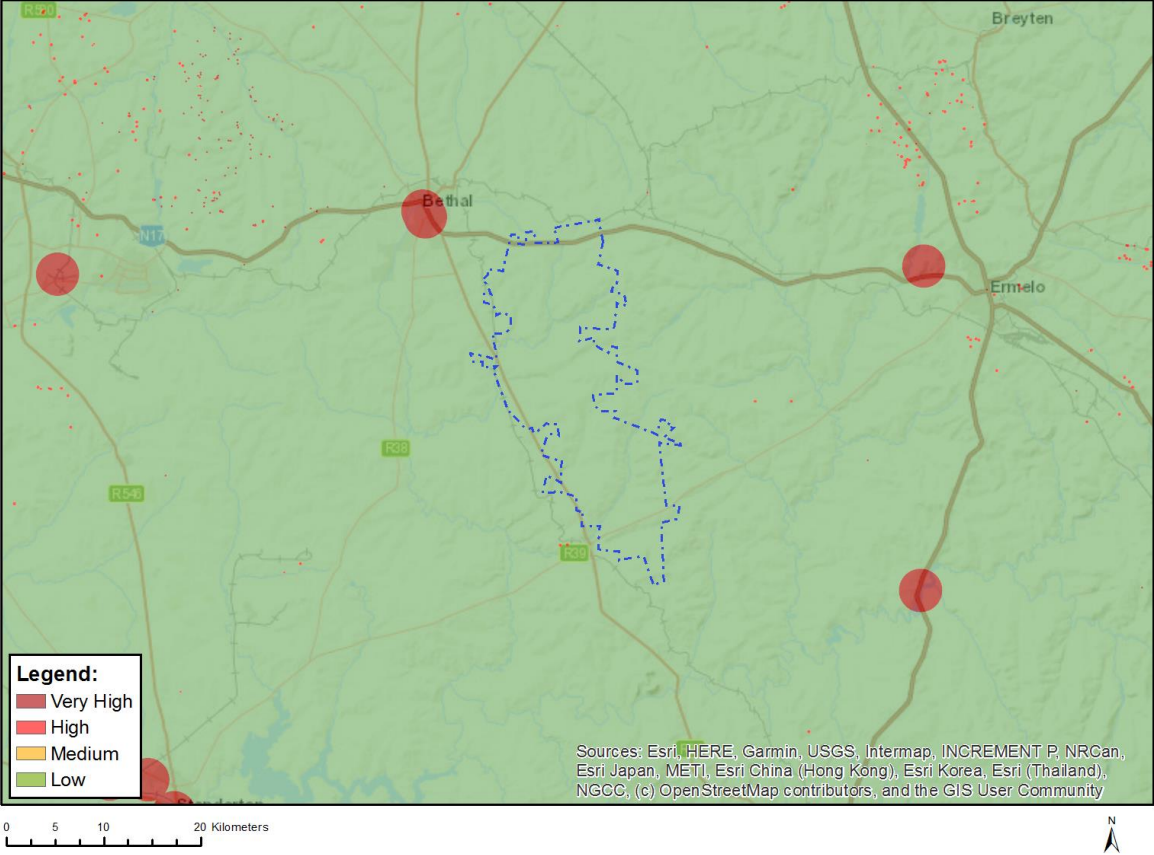


Very High sensitivity	High sensitivity	Medium sensitivity	Low sensitivity
X			

Sensitivity Features:

Sensitivity	Feature(s)
Low	Low sensitivity
Very High	Aquatic CBAs
Very High	Strategic water source area
Very High	Wetlands and Estuaries
Very High	Freshwater ecosystem priority area quinary catchments

MAP OF RELATIVE ARCHAEOLOGICAL AND CULTURAL HERITAGE THEME SENSITIVITY

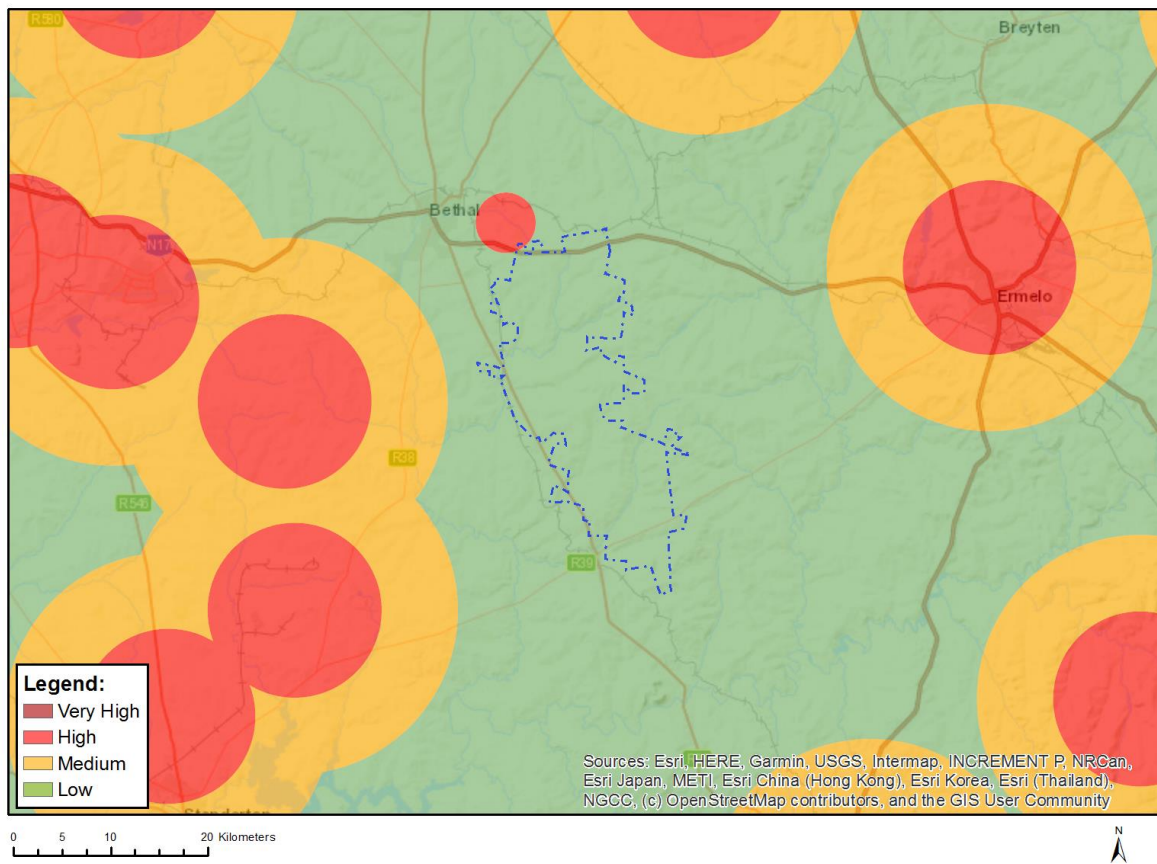


Very High sensitivity	High sensitivity	Medium sensitivity	Low sensitivity
			X

Sensitivity Features:

Sensitivity	Feature(s)
Low	Low sensitivity

MAP OF RELATIVE CIVIL AVIATION THEME SENSITIVITY

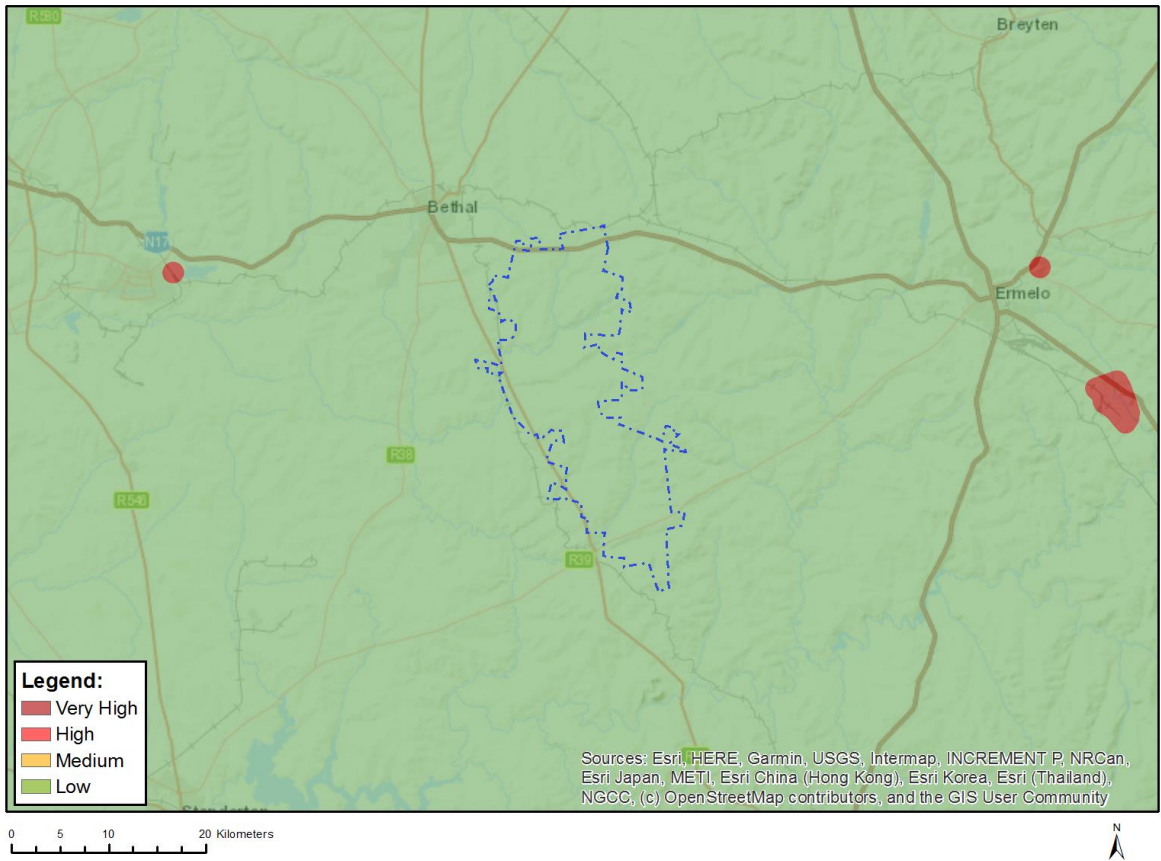


Very High sensitivity	High sensitivity	Medium sensitivity	Low sensitivity
	X		

Sensitivity Features:

Sensitivity	Feature(s)
High	Dangerous and restricted airspace as demarcated
Low	Low sensitivity

MAP OF RELATIVE DEFENCE THEME SENSITIVITY

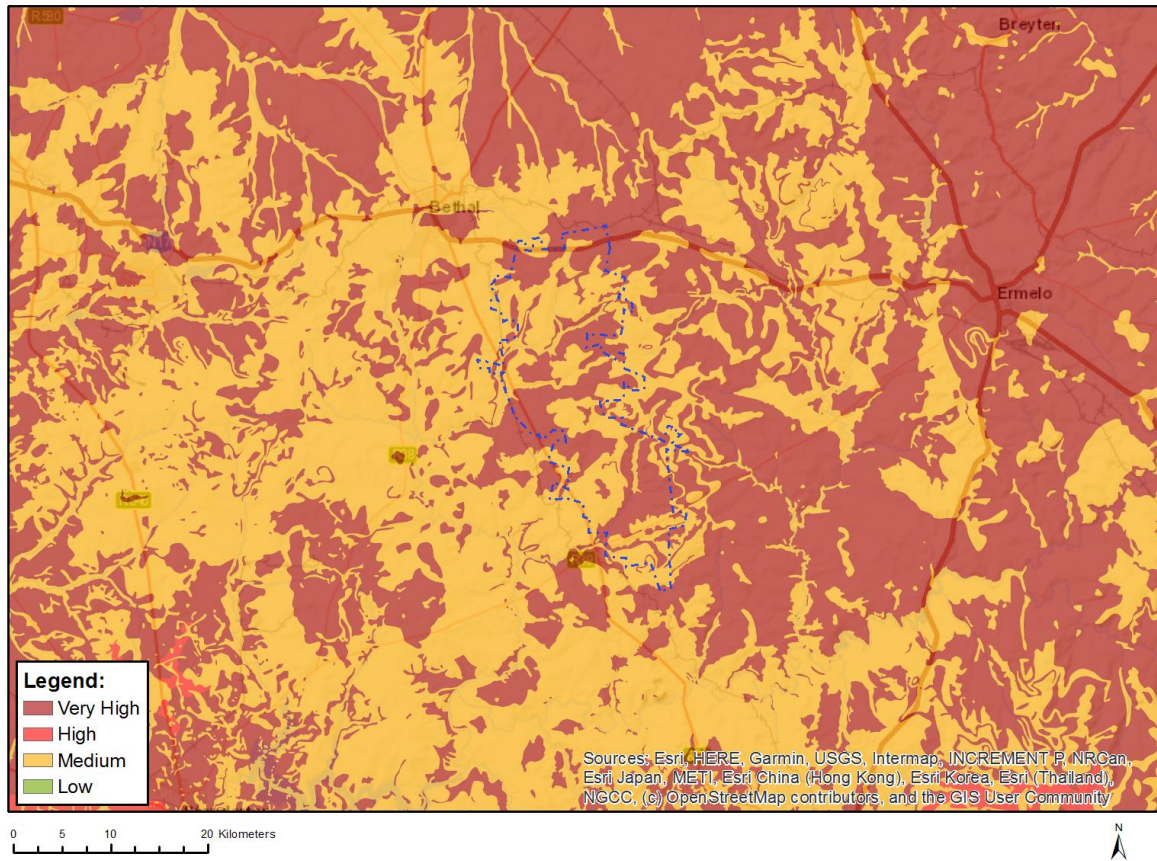


Very High sensitivity	High sensitivity	Medium sensitivity	Low sensitivity
			X

Sensitivity Features:

Sensitivity	Feature(s)
Low	Low Sensitivity

MAP OF RELATIVE PALEONTOLOGY THEME SENSITIVITY

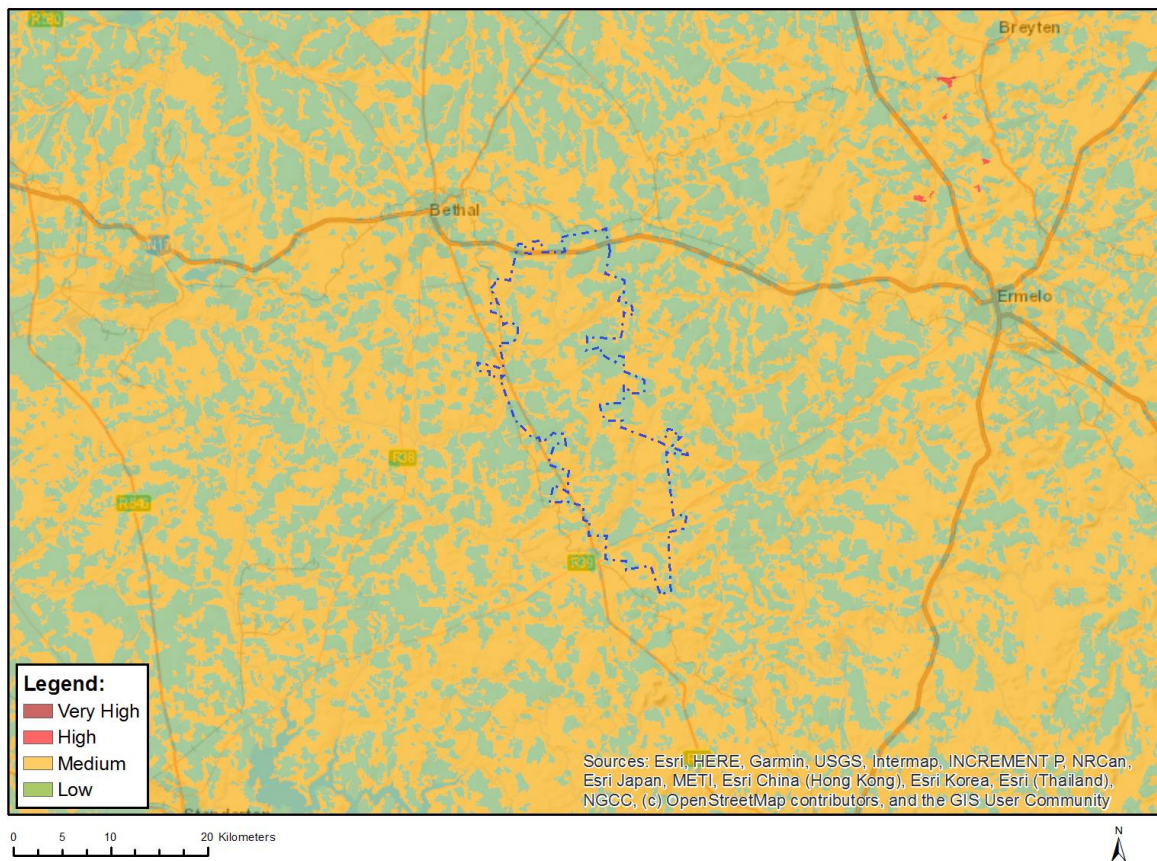


Very High sensitivity	High sensitivity	Medium sensitivity	Low sensitivity
X			

Sensitivity Features:

Sensitivity	Feature(s)
Medium	Features with a Medium paleontological sensitivity
Very High	Features with a Very High paleontological sensitivity

MAP OF RELATIVE PLANT SPECIES THEME SENSITIVITY



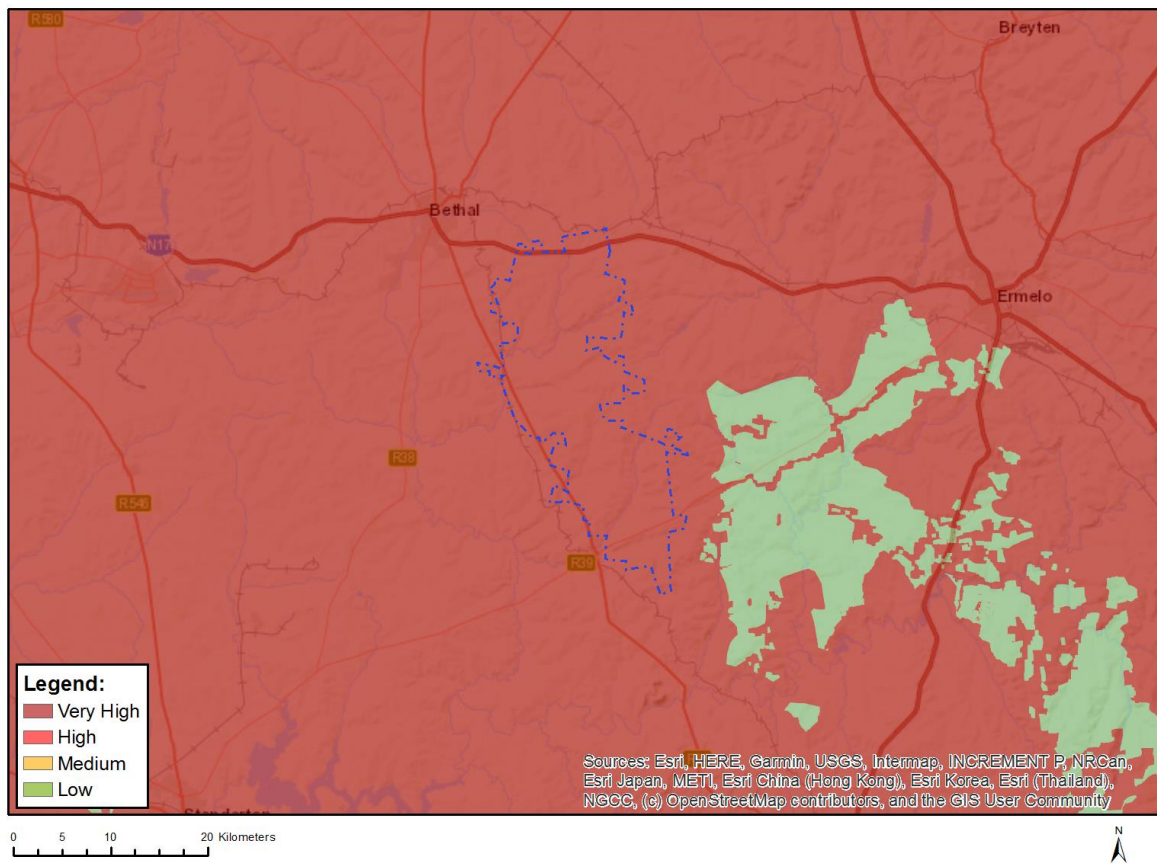
Where only a sensitive plant unique number or sensitive animal unique number is provided in the screening report and an assessment is required, the environmental assessment practitioner (EAP) or specialist is required to email SANBI at eiadatarequests@sanbi.org.za listing all sensitive species with their unique identifiers for which information is required. The name has been withheld as the species may be prone to illegal harvesting and must be protected. SANBI will release the actual species name after the details of the EAP or specialist have been documented.

Very High sensitivity	High sensitivity	Medium sensitivity	Low sensitivity
		X	

Sensitivity Features:

Sensitivity	Feature(s)
Low	Low Sensitivity
Medium	Sensitive species 1252
Medium	Aspidoglossum xanthosphaerum
Medium	Miraglossum davyi
Medium	Sensitive species 691
Medium	Pachycarpus suaveolens

MAP OF RELATIVE TERRESTRIAL BIODIVERSITY THEME SENSITIVITY



Very High sensitivity	High sensitivity	Medium sensitivity	Low sensitivity
X			

Sensitivity Features:

Sensitivity	Feature(s)
Very High	Critical biodiversity area 1
Very High	Critical biodiversity area 2
Very High	Ecological support area: landscape corridor
Very High	Ecological support area: local corridor
Very High	FEPA Subcatchments
Very High	Protected Areas Expansion Strategy
Very High	Vulnerable ecosystem