









Umbila Emoyeni Renewable Energy Wind and Solar PV Facilities, Mpumalanga Province

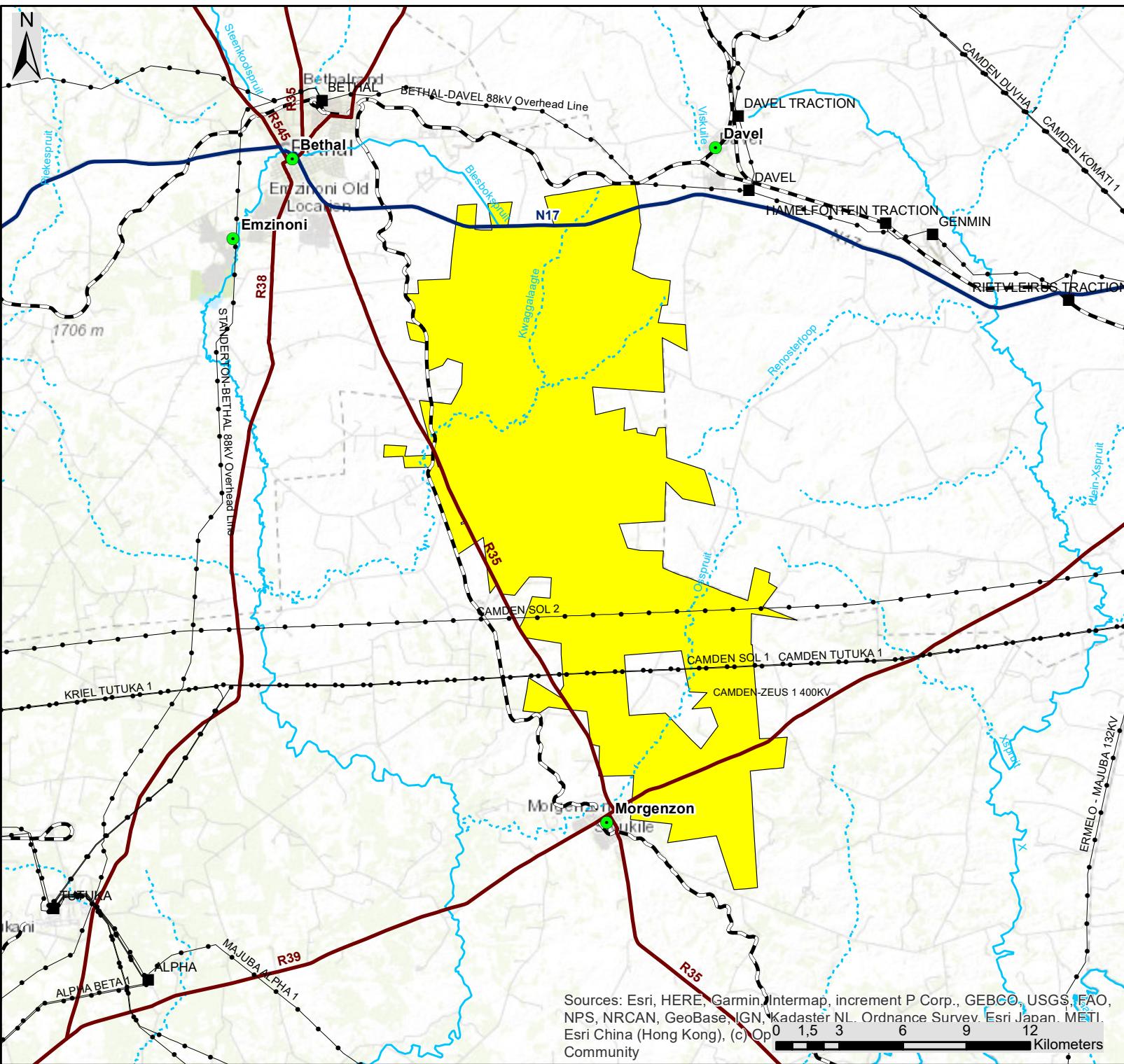
Locality Map

Legend

-  Town
-  Eskom Substation
-  Existing Power lines
-  National Route
-  Regional Road
-  Perennial River
-  Non-perennial River
-  Project Focus Area

Scale: 1:250 000
 Projection: LO29
 Map Reference: Umbila Locality

savannah
 environmental



Sources: Esri, HERE, Garmin, Intermap, increment P Corp., GEBCO, USGS, FAO, NPS, NRCAN, GeoBase, IGN, Kadaster NL, Ordnance Survey, Esri Japan, METI, Esri China (Hong Kong), (c) OpenStreetMap contributors, Swatchtopo, Mapbox, (c) OpenStreetMap contributors, Swatchtopo, Mapbox
 0 1.5 3 6 9 12 Kilometers

Umbila Emoyeni Renewable Energy Wind and Solar PV Facilities, Mpumalanga Province

Cumulative Map

Legend

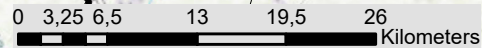
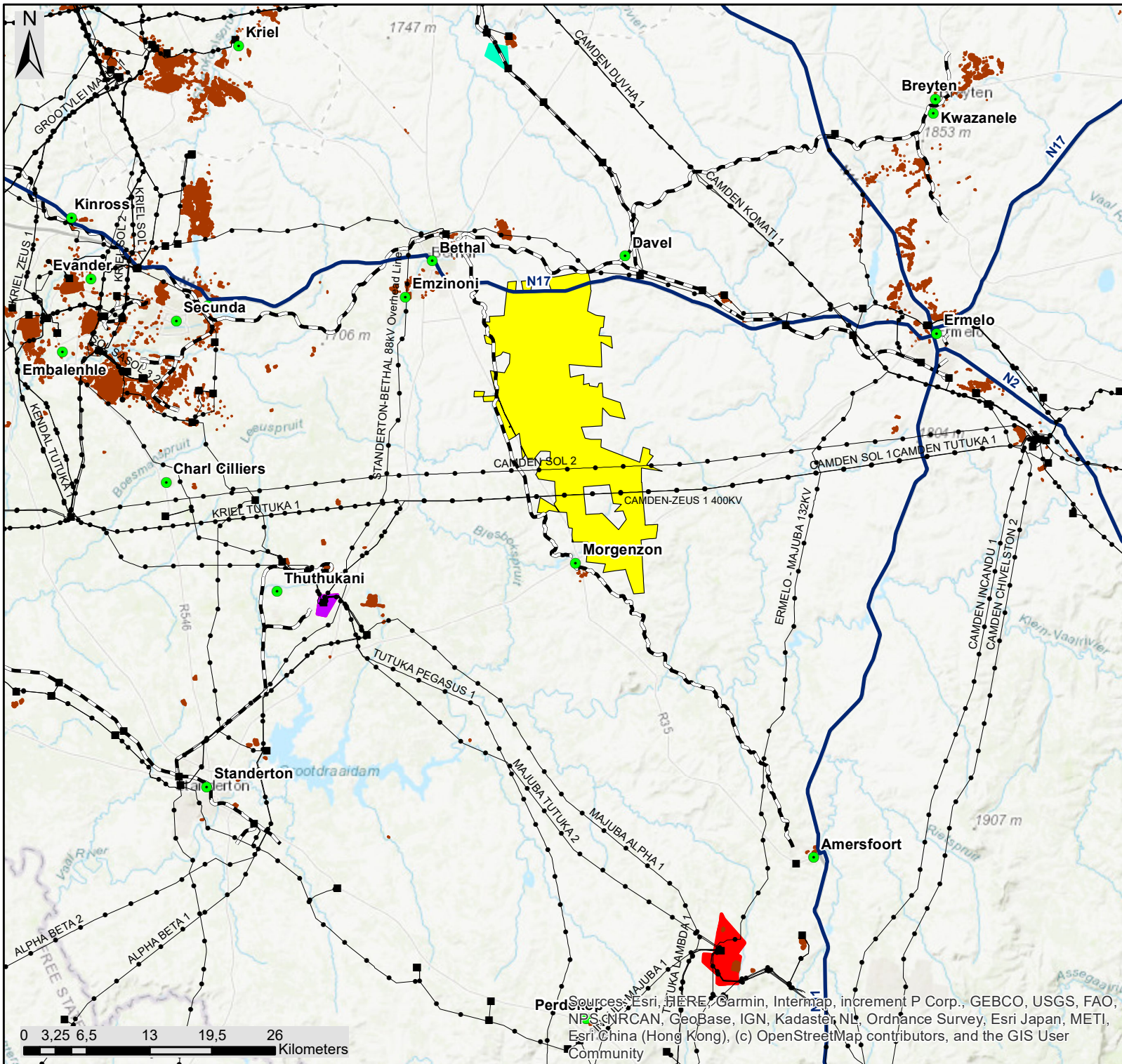
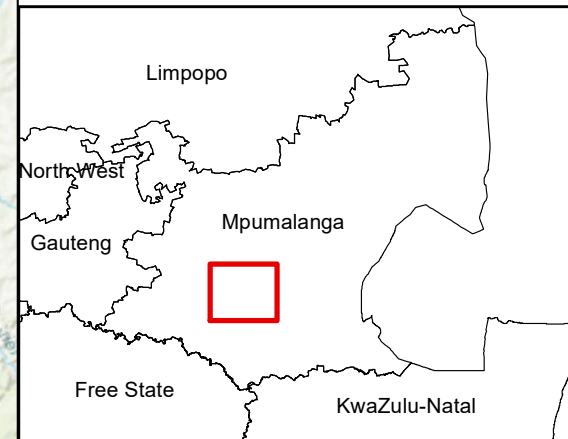
- Town
- Eskom Substation
- Existing Power lines
- National Route
- Project Focus Area
- Mining Areas

Other Known Renewable Energy Facilities (based on affected properties):

- Majuba Solar PV Facility
- Tutuka Solar PV Facility
- Forzando North Coal Mine PV Facility

Scale: 1:550 000
 Projection: LO29
 Map Reference: Umbila Cumulative

savannah
 environmental



Sources: Esri, HERE, Garmin, Intermap, increment P Corp., GEBCO, USGS, FAO, NPS, NRCAN, GeoBase, IGN, Kadaster NL, Ordnance Survey, Esri Japan, METI, Esri China (Hong Kong), (c) OpenStreetMap contributors, and the GIS User Community

Umbila Emoyeni Renewable Energy Wind and Solar PV Facilities, Mpumalanga Province

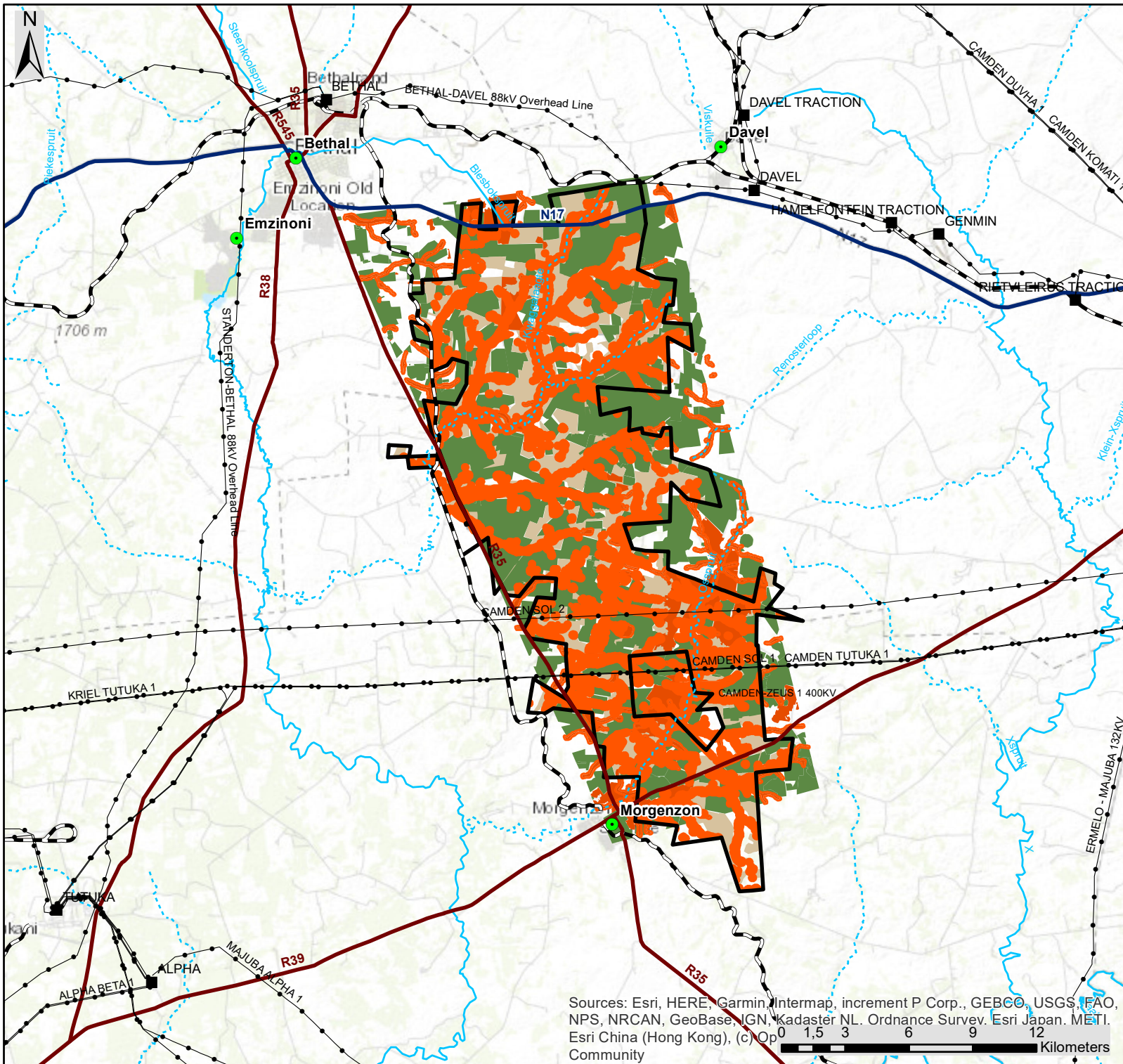
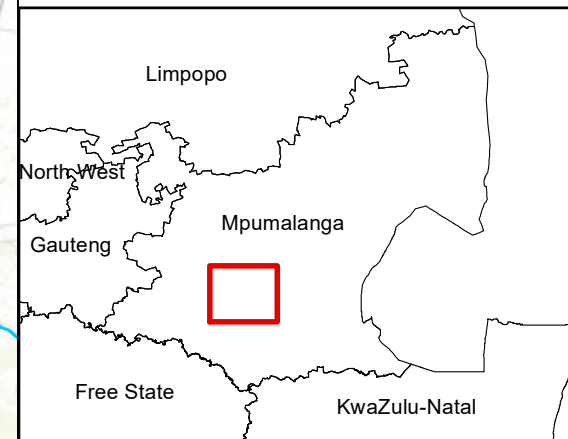
Overall Sensitivity Map

Legend

- Town
- Eskom Substation
- Existing Power lines
- National Route
- Regional Road
- Perennial River
- - - Non-perennial River
- Project Focus Area
- No-Go Areas
- Constrained for Development
- Preferred for Development

Scale: 1:250 000
 Projection: LO29
 Map Reference: Umbila Locality

savannah
 environmental



Sources: Esri, HERE, Garmin, Intermap, increment P Corp., GEBCO, USGS, FAO, NPS, NRCAN, GeoBase, IGN, Kadaster NL, Ordnance Survey, Esri Japan, METI, Esri China (Hong Kong), (c) OpenStreetMap contributors, Swatch, Mapbox, (c) OpenStreetMap contributors, Swatch, Mapbox
 0 1.5 3 6 9 12 Kilometers