

FINAL BASIC ASSESSMENT REPORT

Proposed Development of a 132 kV Overhead Power
Line and Supporting Infrastructure for the Proposed
Vhuvhili Solar Photovoltaic Energy Facility, near
Secunda in the Mpumalanga Province

APPENDIX C

Maps

APPENDICES

Final Basic Assessment Report: Proposed Development of a 132 kV Overhead Power Line and Supporting Infrastructure for the Proposed Vhuvhili Solar Photovoltaic Energy Facility, near Secunda in the Mpumalanga Province



Contents

C. 1: LAYOUT 3

C. 2: START, MIDDLE, & END POINTS..... 4

C. 3: AFFECTED FARM PORTIONS 5

C. 4: ACCESS ROADS 6

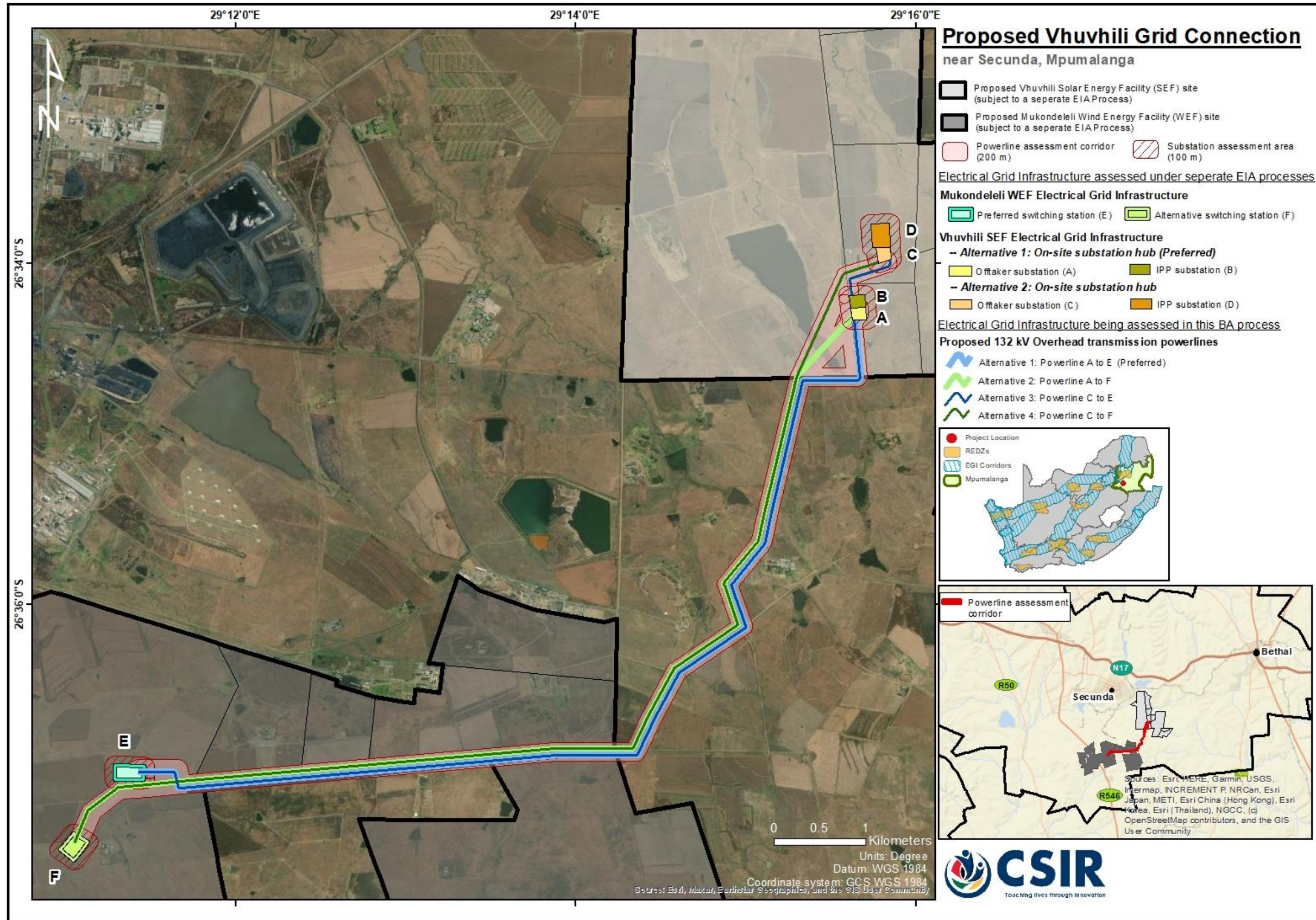
C. 5: NOTICE BOARD PLACEMENT 7

C. 6: 50 KM CUMULATIVE IMPACT ASSESSMENT 8

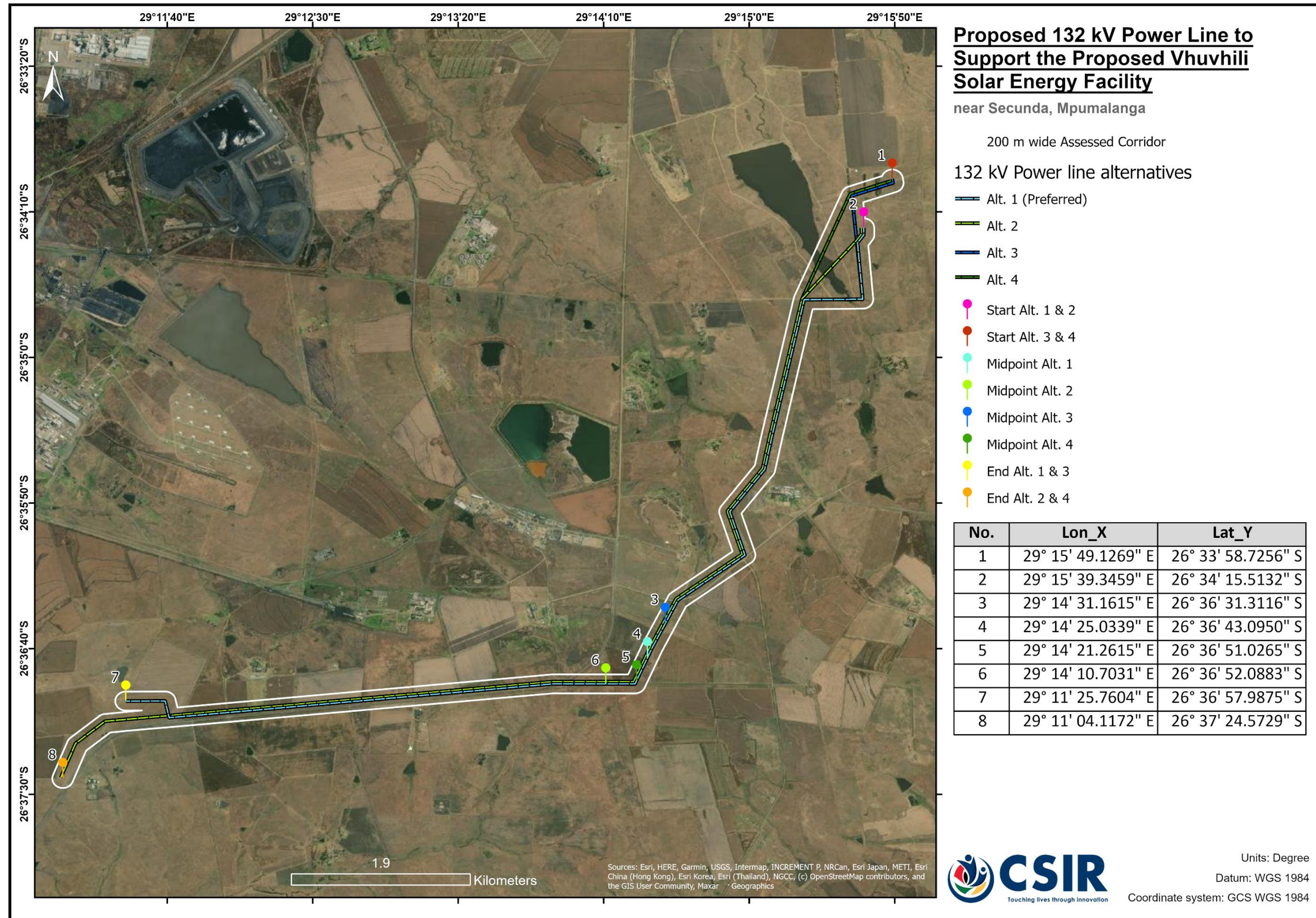
C. 7: ZONING MAP 9

C. 8: SENSIVITIES & FEATURES..... 10

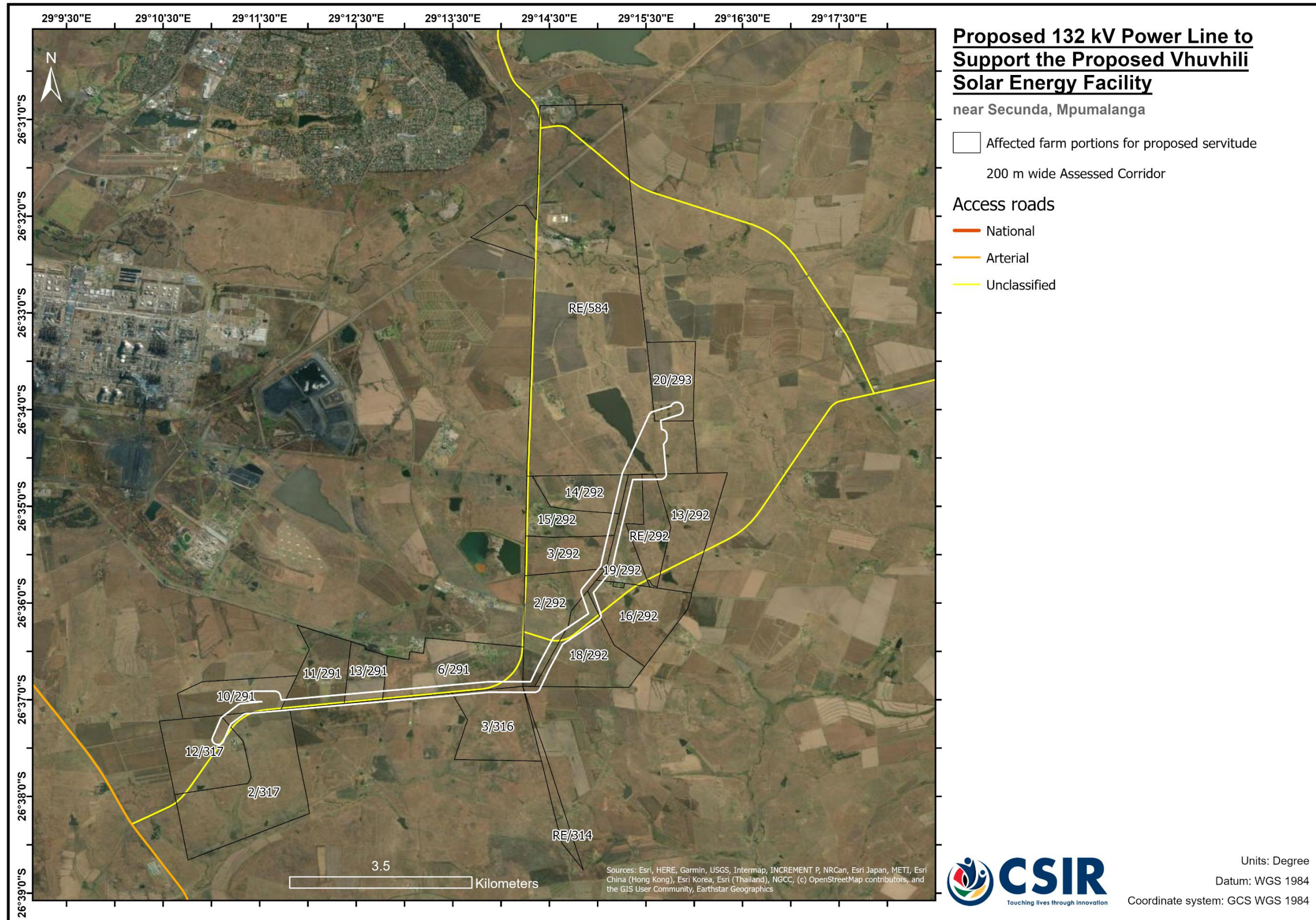
C. 1: LAYOUT



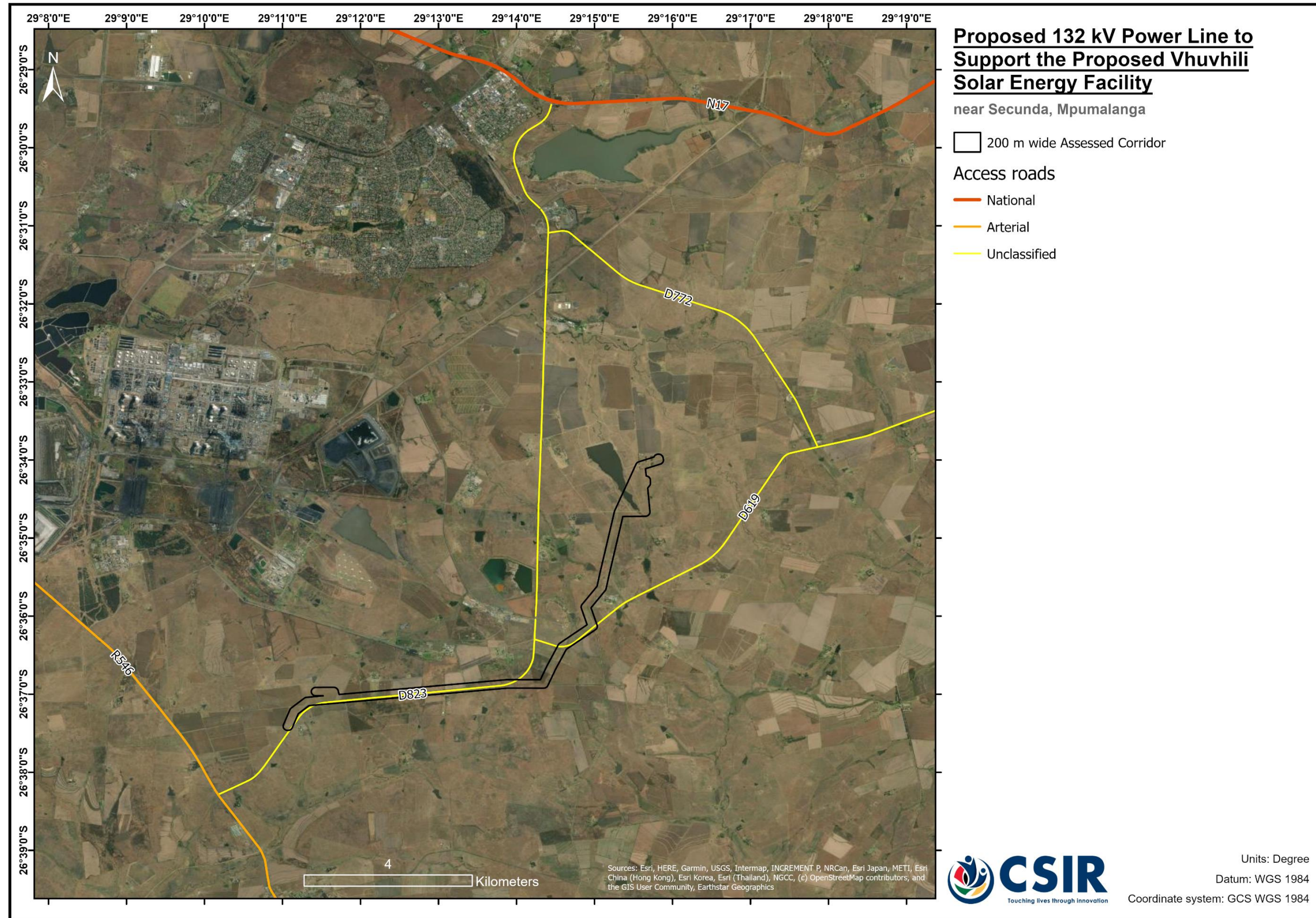
C. 2: START, MIDDLE, & END POINTS



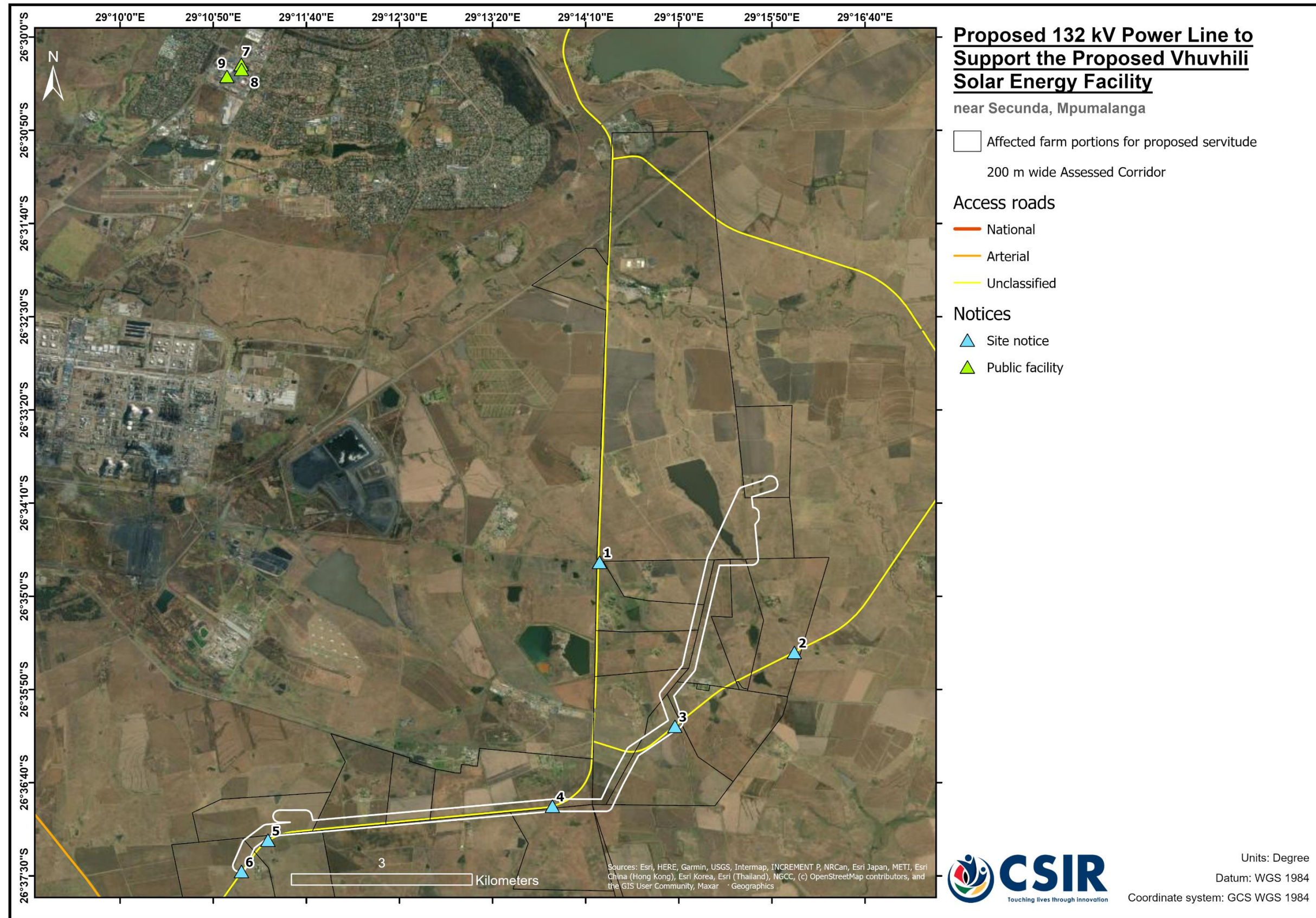
C. 3: AFFECTED FARM PORTIONS



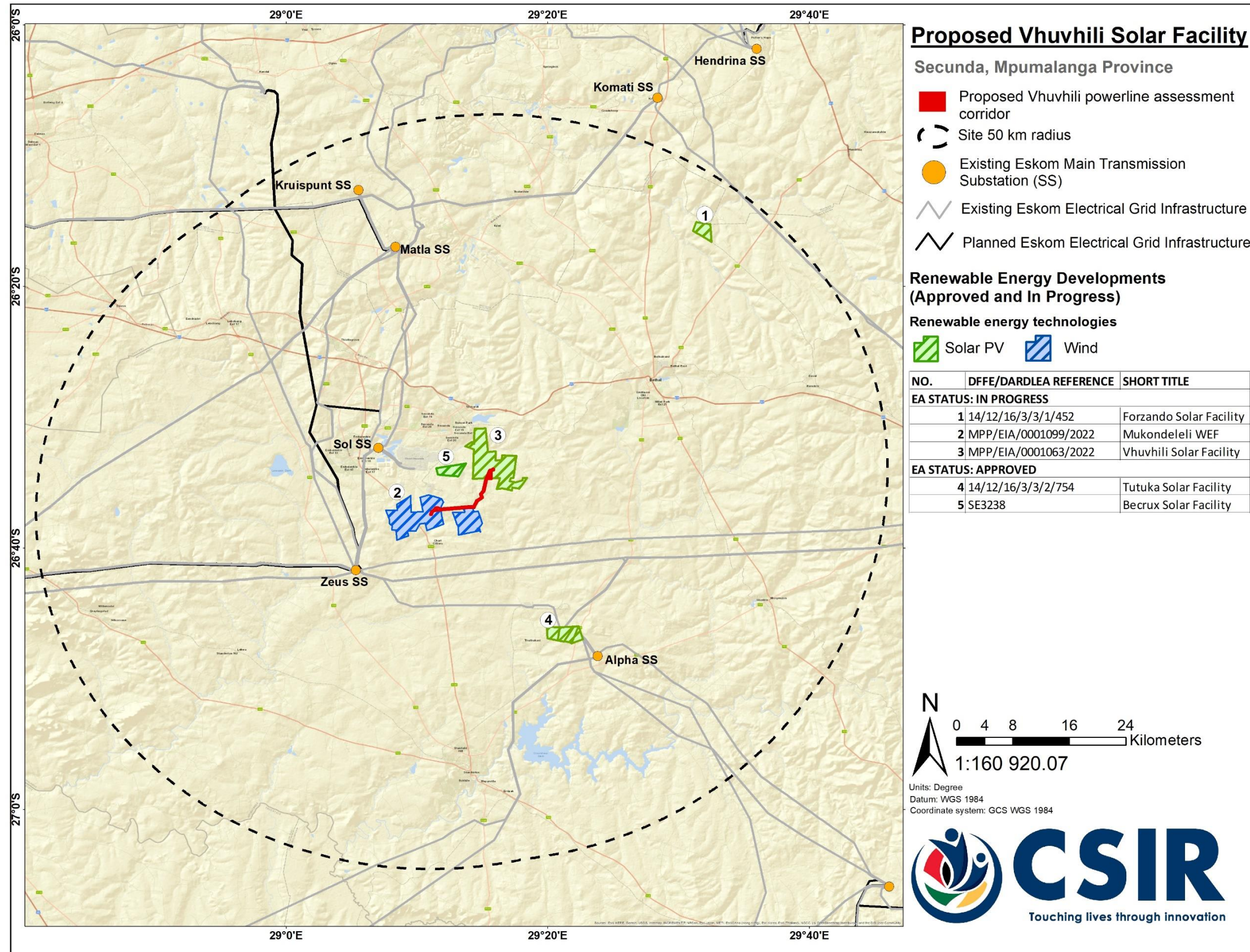
C. 4: ACCESS ROADS



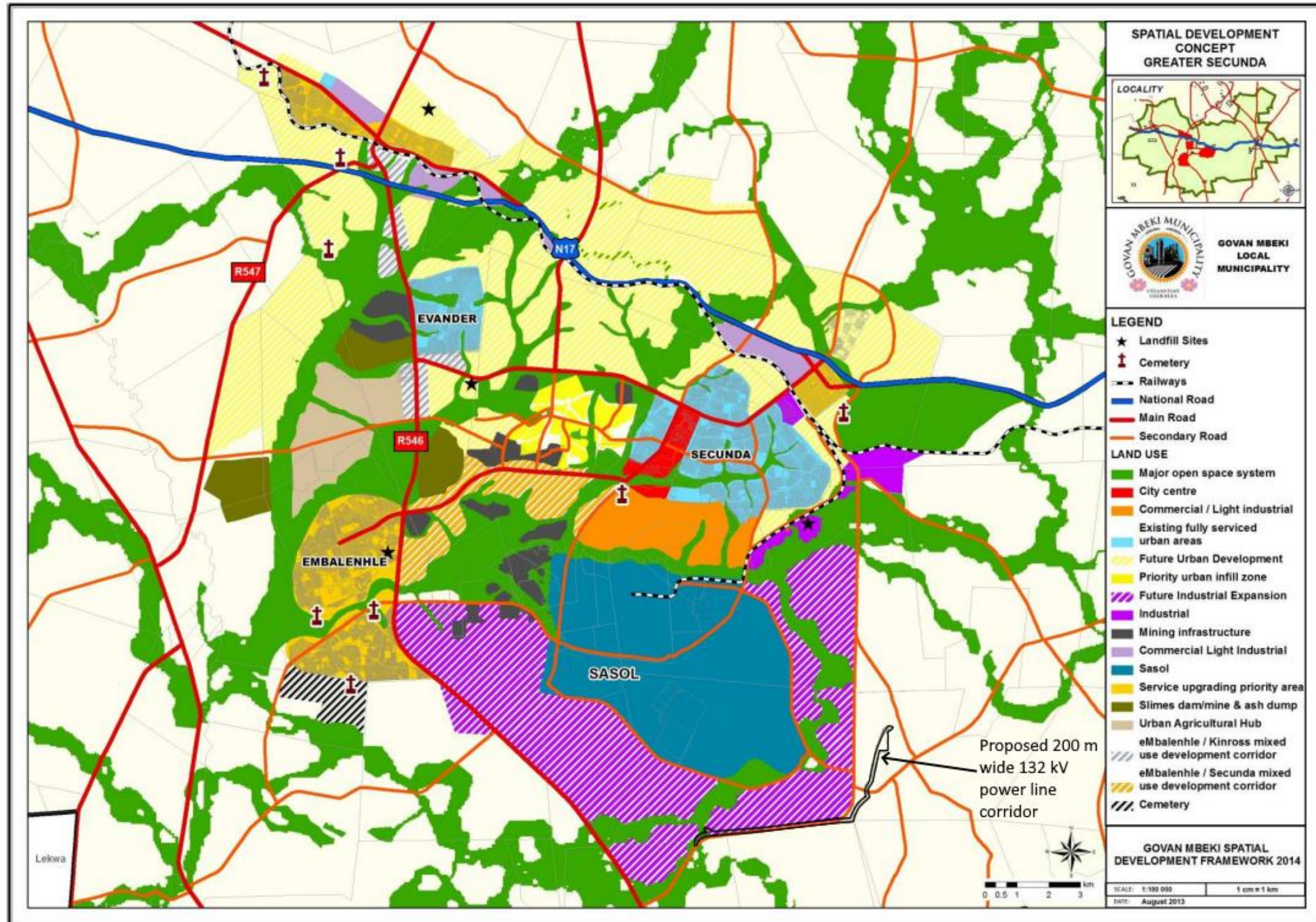
C. 5: NOTICE BOARD PLACEMENT



C. 6: 50 KM CUMULATIVE IMPACT ASSESSMENT



C. 7: ZONING MAP



(Source: Govan Mbeki Spatial Development Framework, 2014-2034: p. 334)

C. 8: SENSIVITIES & FEATURES

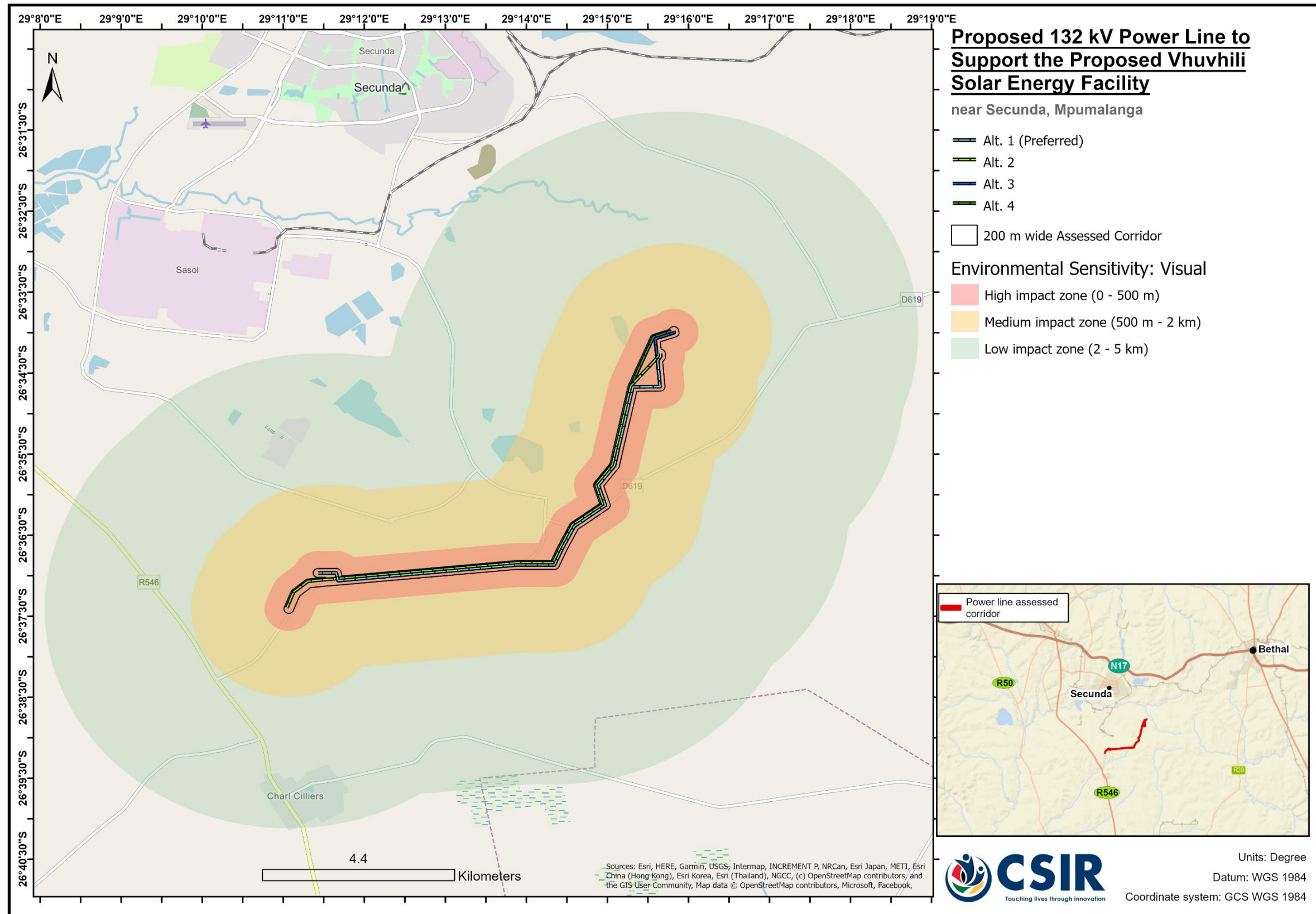


Figure 1: Sensitivity Map for Zones of Visual Sensitivity

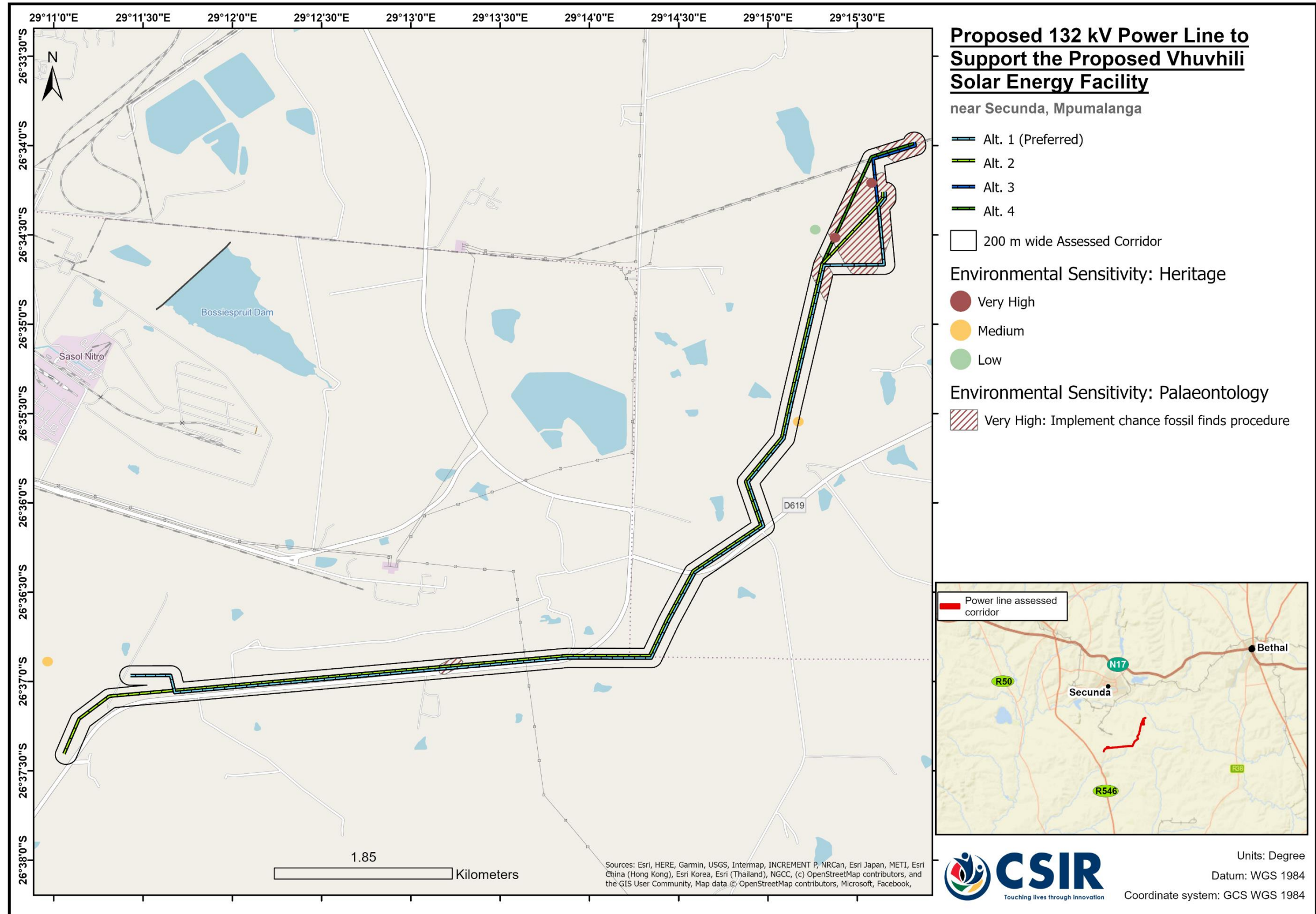


Figure 2: Sensitivity Map for Heritage and Palaeontology

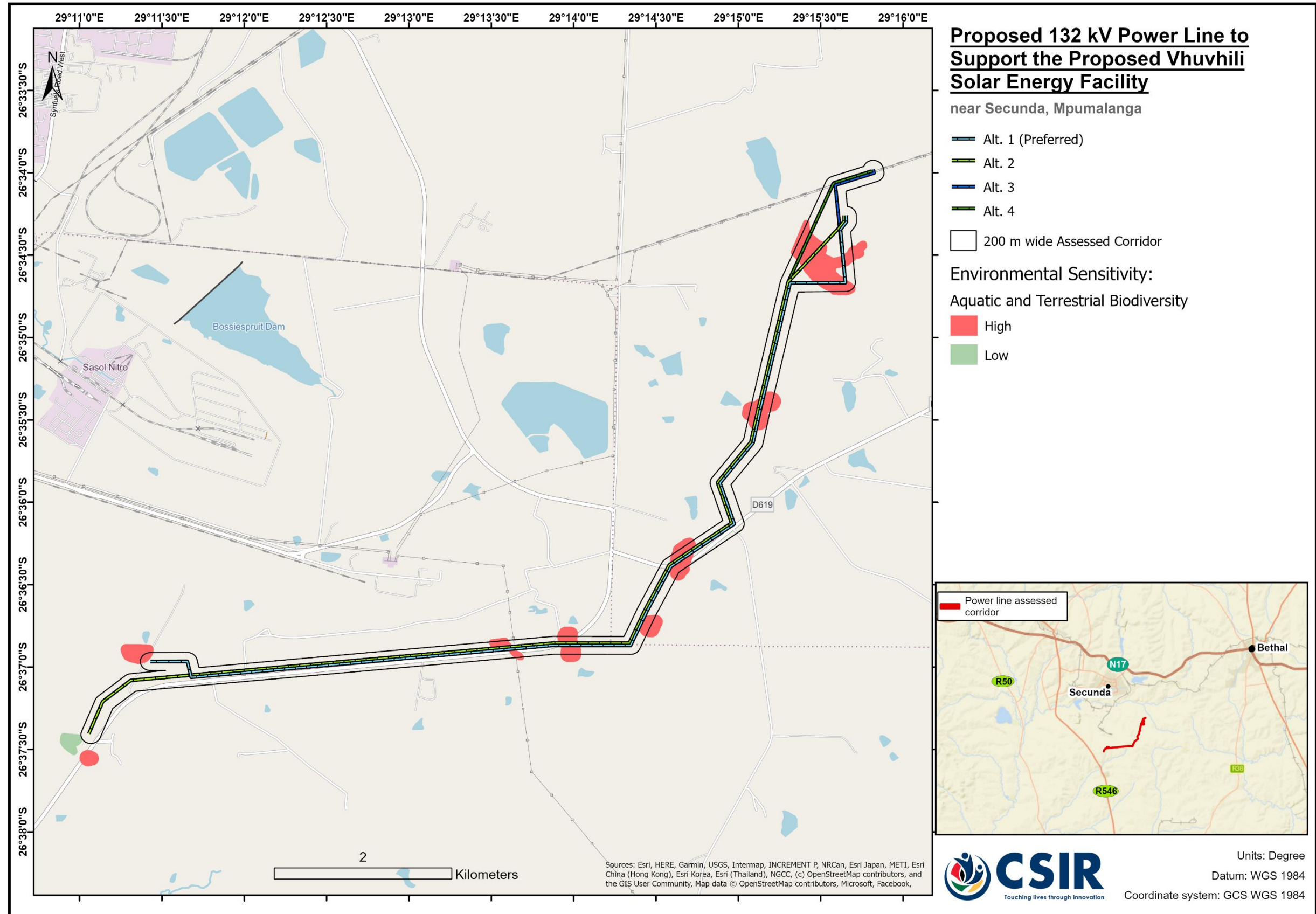


Figure 3: Sensitivity Map for Aquatic and Terrestrial Biodiversity

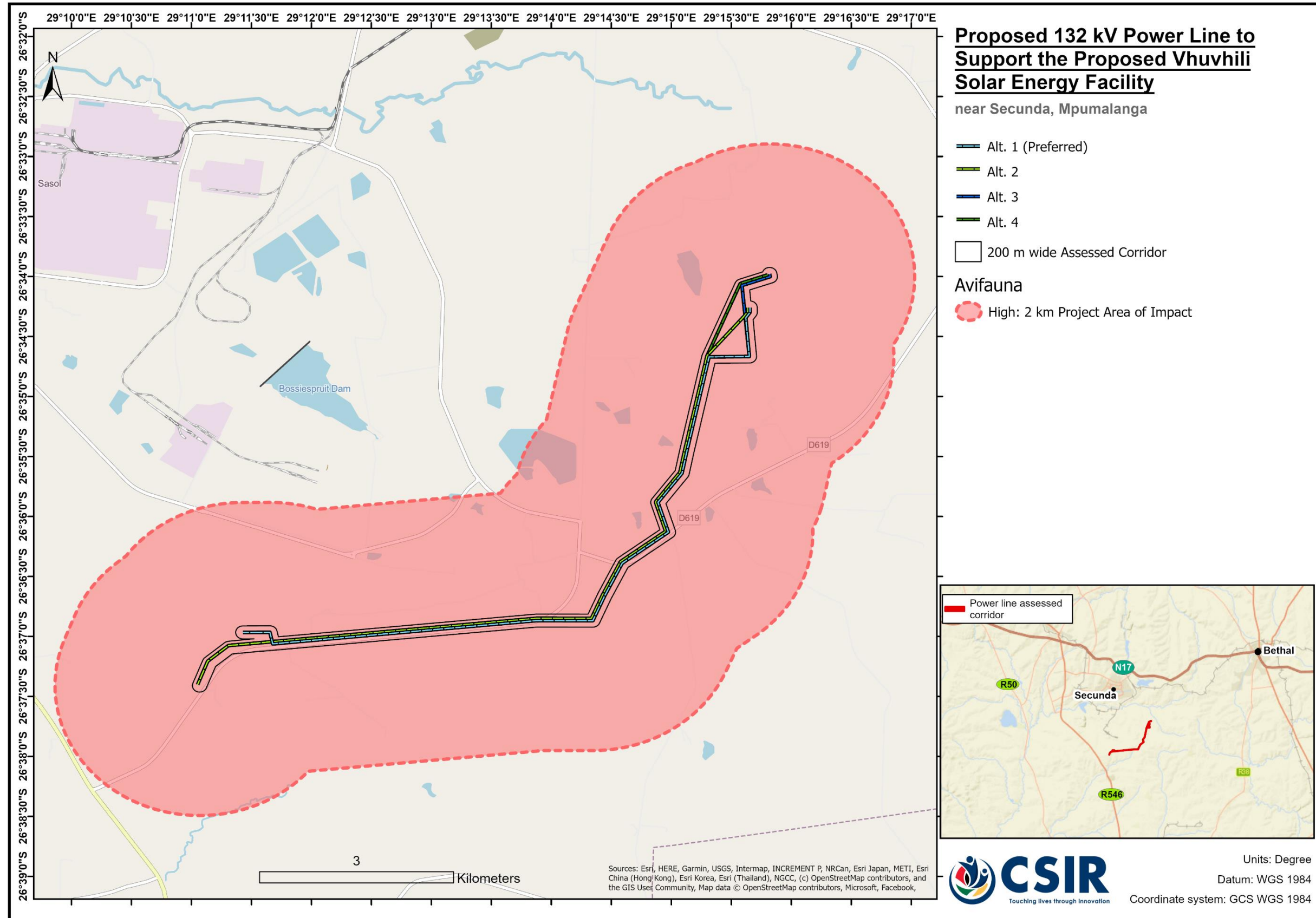


Figure 4: Sensitivity Map for Avifauna

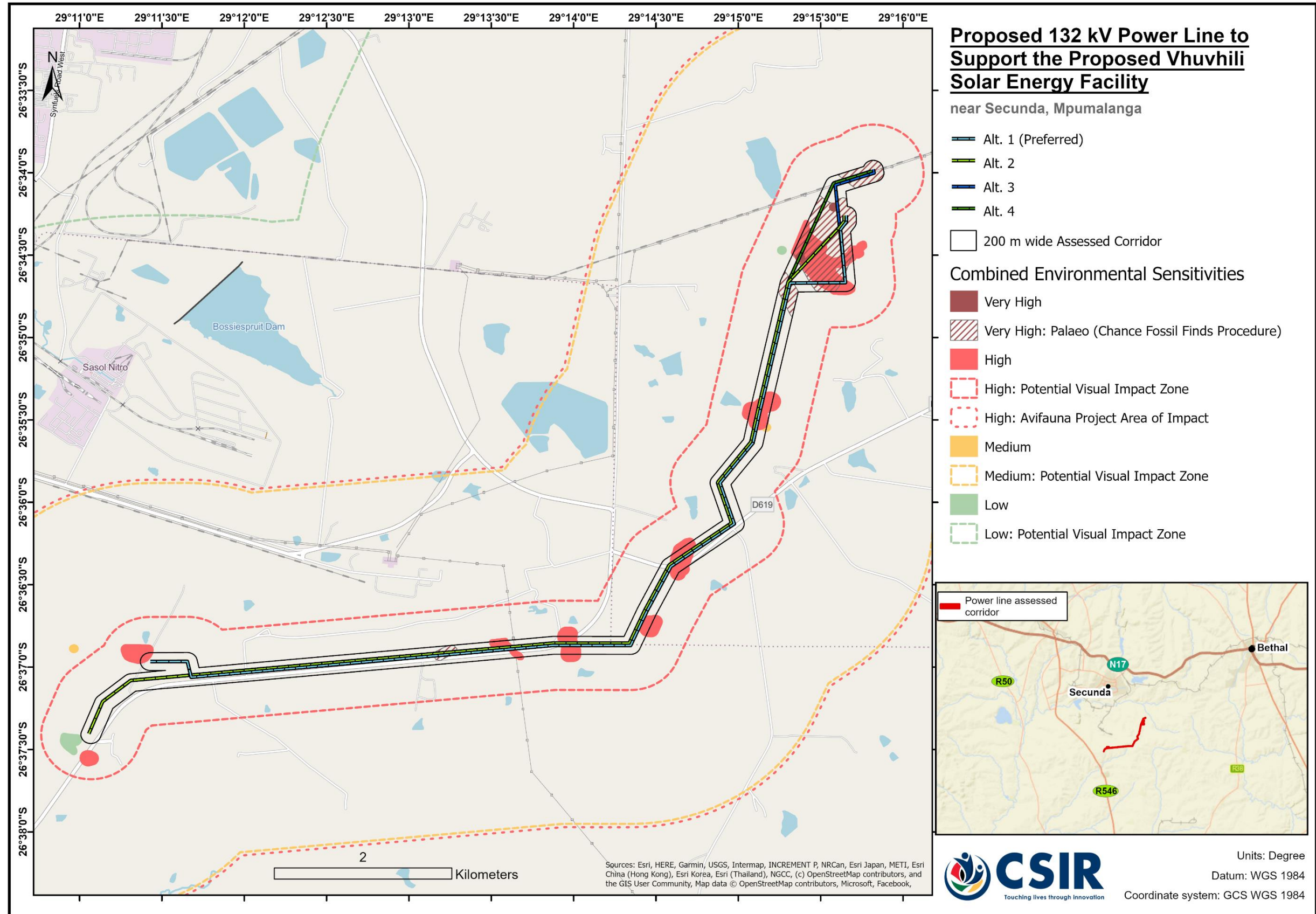


Figure 5: Combined Sensitivity Map for the proposed project

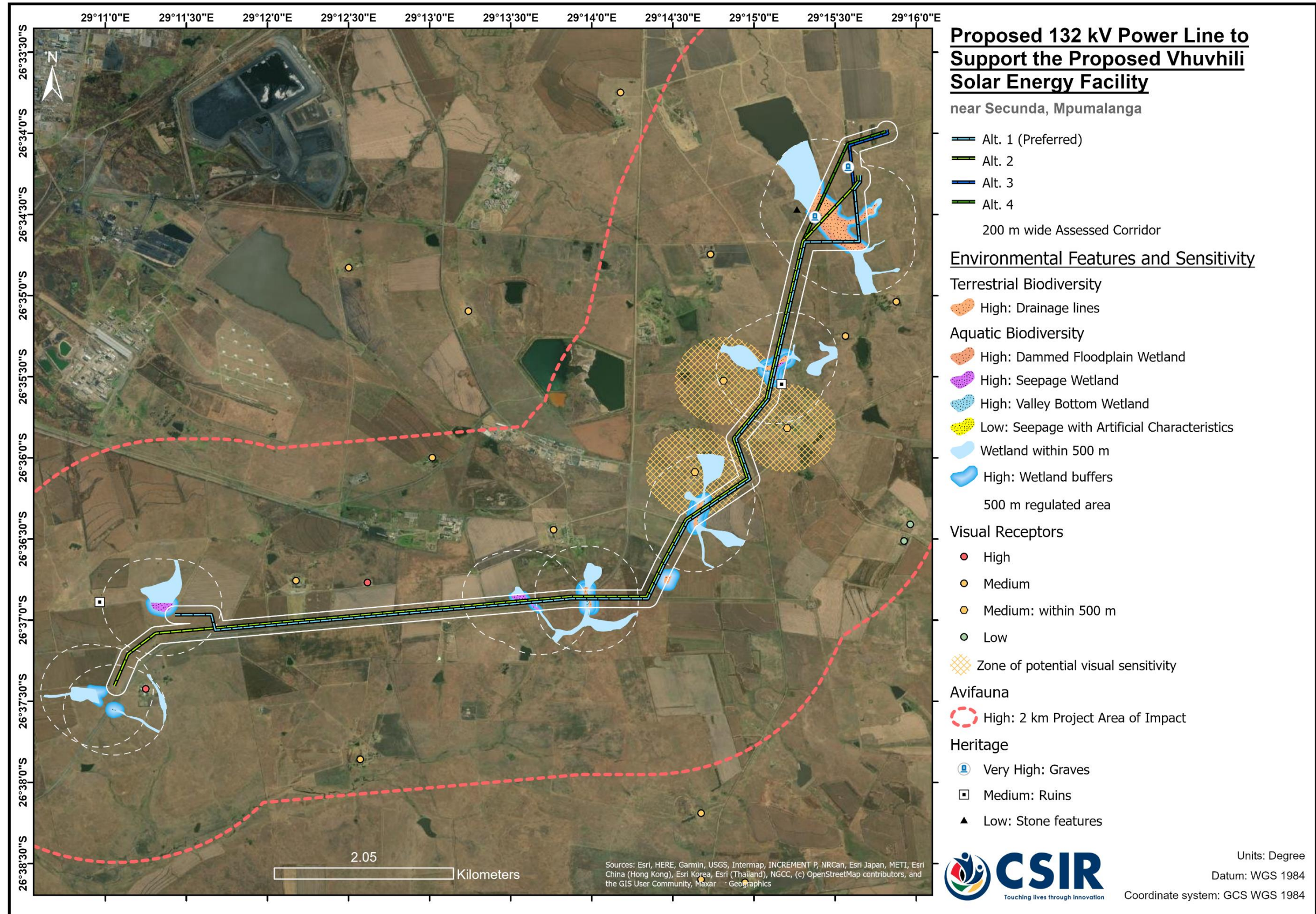


Figure 6: Combined Sensitivity and Key Features Map for the proposed project

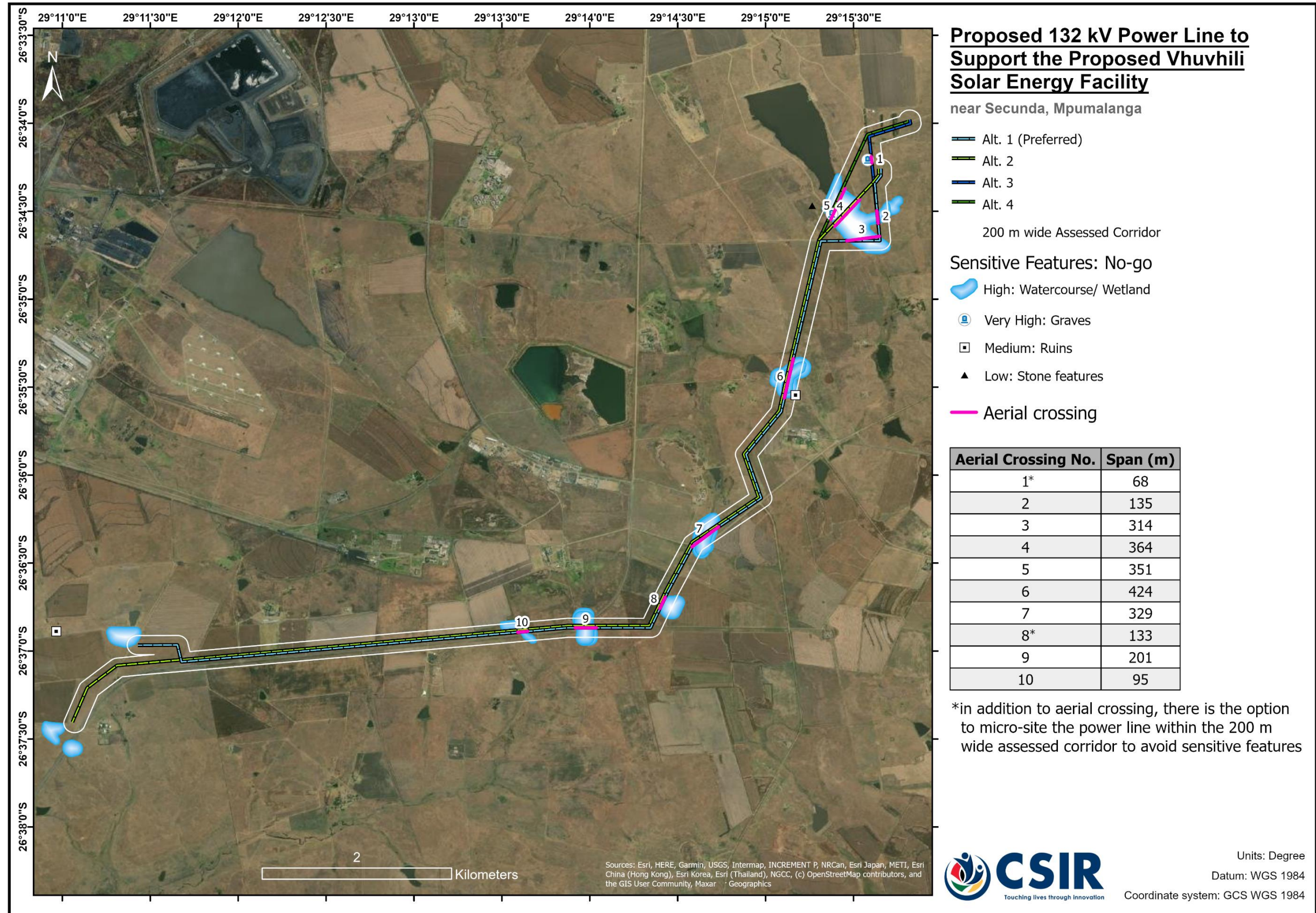


Figure 7: Aerial Crossing Required to mitigate impact on Aquatic and Terrestrial Biodiversity Features, and Heritage Features.