

VISTA HIGH SCHOOL

DATA SHEET

Report Date:	08 March 2022	Stage 5
Work Type:	2021-22 FCA Preventative maintenance – Heritage schools	
Report Type:	Completion report	
School Name:	Vista High School	DTPW
Location:	1 Military Road, Bo Kaap	
EMIS No.:	0103313416	
Principal:	Mrs C Little	
School Tel:	021-424 7430	
Number of Learners:	624	
Report by:	Danielle Jacobs	021-465-9702
Management Contractor:	Grinaker LTA	
Key person:	Tauriq Mohidin	021-703-1040

1. CLOSE OUT REPORT

Attention Grinaker Lta,

I would like to confirm that all the work specified in the architectural scope of works listed below has been satisfactorily completed in its entirety, including all snags listed in our defects report.

Scope of works inspected and completed:

1. Asbestos roof replacement on **x3** external staircase canopies.
2. Addition of steel handrails and balustrades on external stairs and walkways.
3. Repairing of exist. Gutters where required.
4. Addition of paving and retaining structures.
5. Repair cracks in structural brickwork and concrete. (as per structural Eng. report)
6. Repairing of existing balustrades and handrails.

Yours faithfully



Danielle Jacobs

R&L Architects

1. SITE PLAN

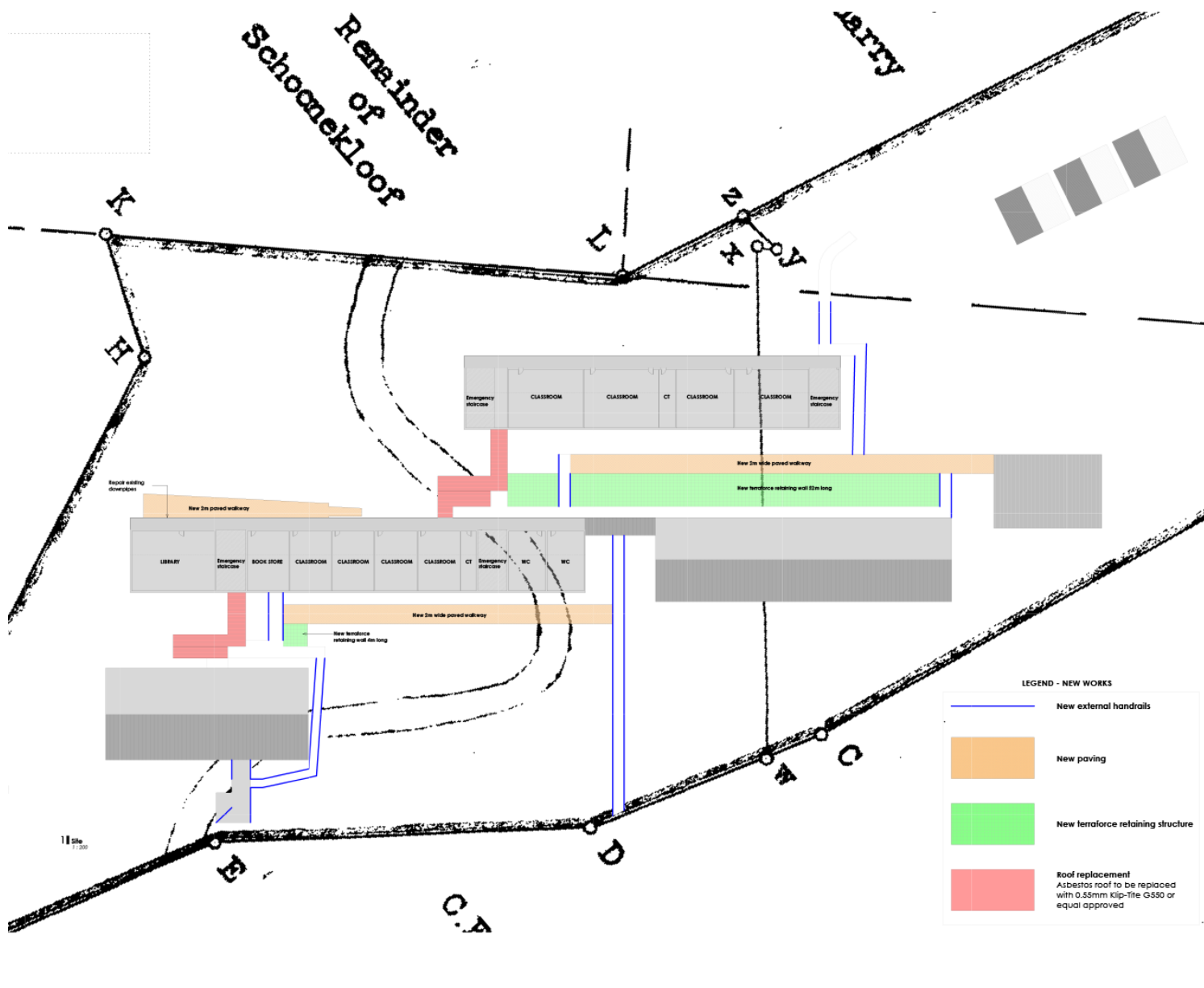


Figure 1: Site plan

2. CLOSE OUT PICTURES

Asbestos roof replacement on x2 external staircase canopies (before and after)



Figure 2A before: Canopy 1. (See site plan)



Figure 2B after: Canopy 1.



Figure 3A before: Canopy 2. (See site plan)



Figure 3B after: Canopy 2.



Figure 4A before: Canopy 3. (See site plan)



Figure 4B after: Canopy 3.

Addition of steel handrails and balustrades on external stairs and walkways.



Figure 5A before: (Staircase 1) addition of steel handrails and balustrades on external stairs and walkways.

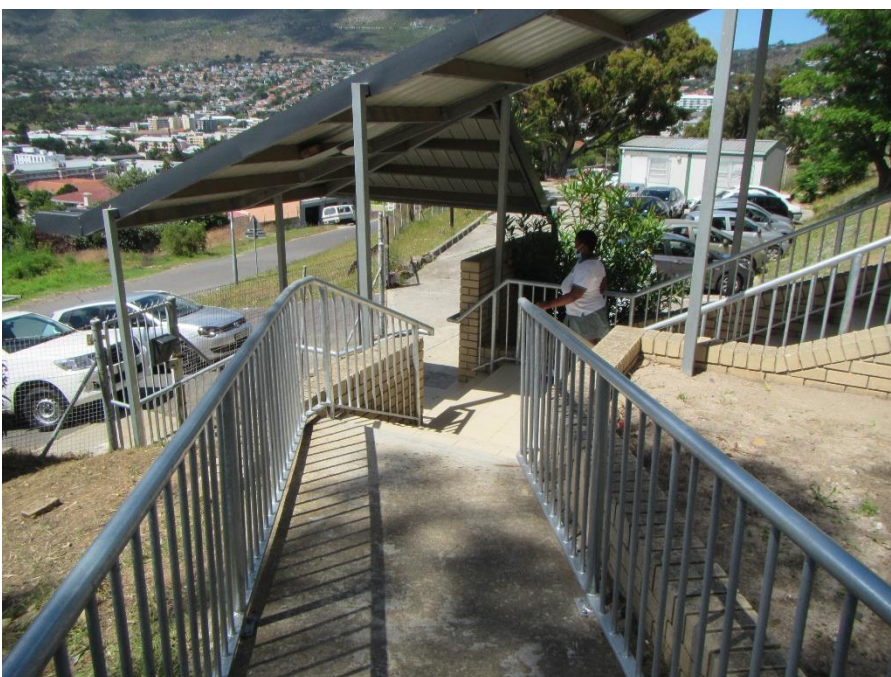


Figure 5B after: (Staircase 1) addition of steel handrails and balustrades on external stairs and walkways.



Figure 6A before: (Staircase 2) addition of steel handrails and balustrades on external stairs and walkways.



Figure 6B after: (Staircase 2) addition of steel handrails and balustrades on external stairs and walkways.



Figure 7A before: (Staircase 3) addition of steel handrails and balustrades on external stairs and walkways.

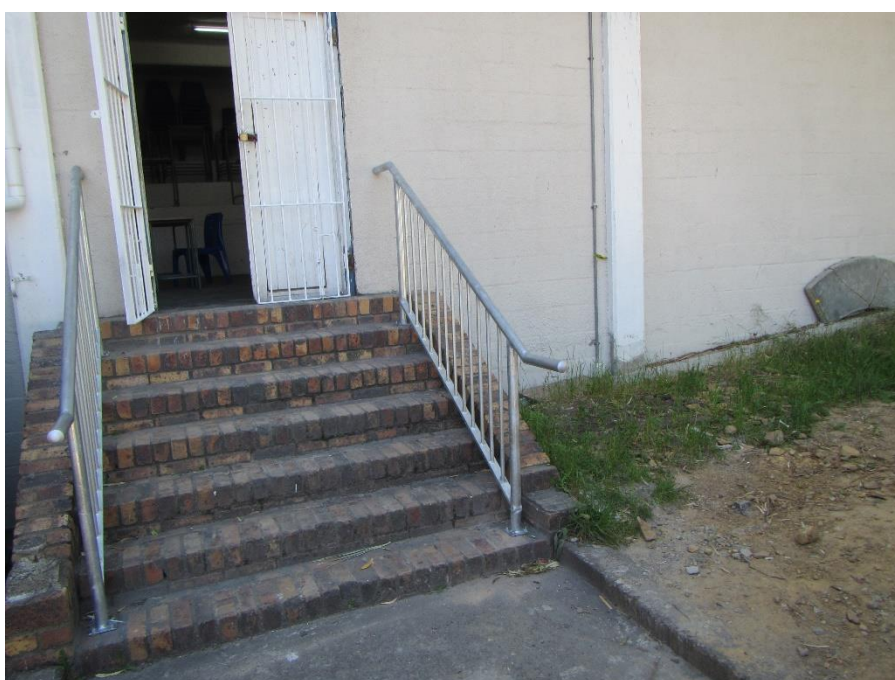


Figure 7B after: (Staircase 3) addition of steel handrails and balustrades on external stairs and walkways.



Figure 8A before: (Staircase 4) addition of steel handrails and balustrades on external stairs and walkways.



Figure 8B after: (Staircase 4) addition of steel handrails and balustrades on external stairs and walkways.



Figure 9A before: (Staircase 5) addition of steel handrails and balustrades on external stairs and walkways.



Figure 9B after: (Staircase 5) addition of steel handrails and balustrades on external stairs and walkways.



Figure 10A before: (Staircase 6) addition of steel handrails and balustrades on external stairs and walkways.



Figure 10B after: (Staircase 6) addition of steel handrails and balustrades on external stairs and walkways.



Figure 11A before: (Staircase 7) addition of steel handrails and balustrades on external stairs and walkways.



Figure 11B after: (Staircase 7) addition of steel handrails and balustrades on external stairs and walkways.

Addition of paving and retaining structures.



Figure 12A before: Proposed new paving at upper tier.



Figure 12B after: new paving at upper tier.



Figure 13A before: Proposed new retaining wall at upper tier.



Figure 13B after: new retaining wall at upper tier.



Figure 14A before: Proposed new paving and retaining wall at lower tier.



Figure 14B after: new retaining wall at lower tier (entrance walkway).



Figure 14C after: new paving/walkway at lower tier

Repairing of existing balustrades and handrails.



Figure 15A before: Corroded handrails and balustrades.



Figure 15B after: Balustrades and handrails sanded, treated, and painted white.