

SITE NOTICE PHOTOGRAPHS

Site notices and posters were placed in Lephale town, Marapong and the Steenbokpan area on 20 July 2018. Please refer to the below figures which serve as proof of onsite notice placement in the project area.

Refer to Table 1 below for the GPS coordinates at which site notices were placed in Lephale Town.



Figure 1: Aerial Image (courtesy of Google Earth) indicating the position of site notices placed within Lephale Town

Please note “Fig” refers to figure in the below table.

Table 1: Location of Site Notices placed for proposed Lephale Railway Yard within Lephale Town

Site Notice	Longitude	Latitude	Description of Location
1 – Fig 2	23°40'42.31"S	27°44'16.36"E	Lephale Square, Pick and Pay along Nelson Mandela Drive
2 – Fig 3	23°41'12.13"S	27°42'16.70"E	Lephale Mall, Checkers along Nelson Mandela Drive
3 – Fig 4	23°41'14.81"S	27°41'46.75"E	Lephale Public Library (Douwater Road)
4 – Fig 6	23°41'11.40"S	27°41'47.73"E	Lephale Local Municipality – Rates & Taxes Pay Point (c/o Dagbreek & Douwater Road)
5 – Fig 7	23°41'23.06"S	27°41'54.98"E	Lephale Superspar (Dagbreek Road)

Refer to Figure 2 to 7 overleaf for proof of onsite notice placement.

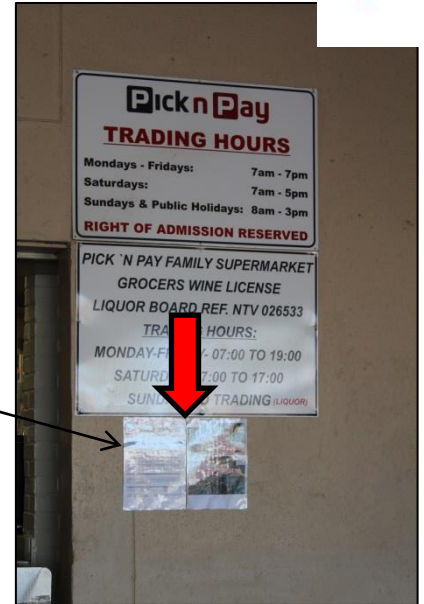


Figure 2: Site Notice 1 placed at Pick and Pay at the Lephalale Square Shopping Complex



Figure 3: Site Notice 2 placed at Lephalale Mall, Checkers community notice board



Figure 4: Site Notice 3 placed at Lephalale Public Library notice board

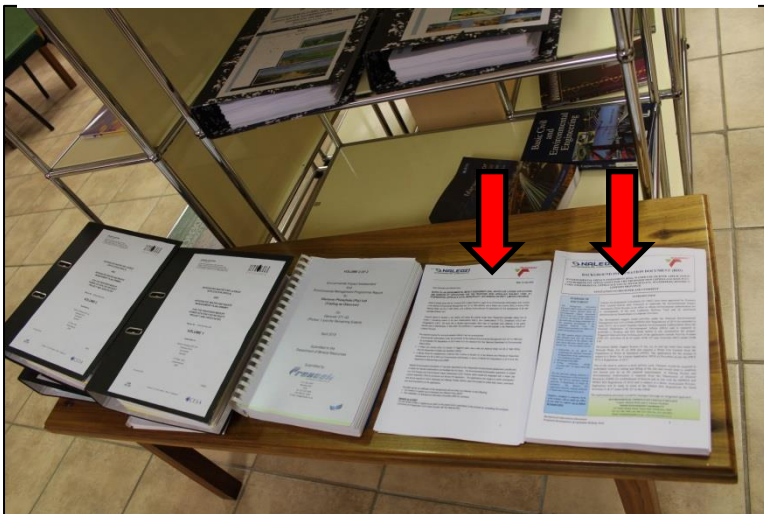


Figure 5: Background Information Documents placed at the EIA Display Section of the Lephalale Public Library

Site Notices Photographs



Figure 6: Site Notice 4 placed at the Lephhalale Local Municipality Rates & Taxes Pay Point



Figure 7: Site Notice 5 placed at Lephhalale Superspar



Figure 8: Aerial image (courtesy of Google Earth) indicating the location of site notices placed within Marapong village, north-west of Lephalale

Refer to Table 2 below for the GPS coordinates at which site notices were placed in Marapong Village.

Please note “Fig” refers to figure in the below table.

Table 2: Location of Site Notices placed for the proposed Lephalale Railway Yard within Marapong Village

Site Notice	Longitude	Latitude	Description of Location
6 – Fig 9	23°39'22.24"S	27°37'45.56"E	Marapong Public Library (Phukubye Street)
7– Fig 10	23°39'18.99"S	27°37'10.64"E	Marapong Superspar

Refer to Figure 9 to 10 for proof of onsite notice placement.

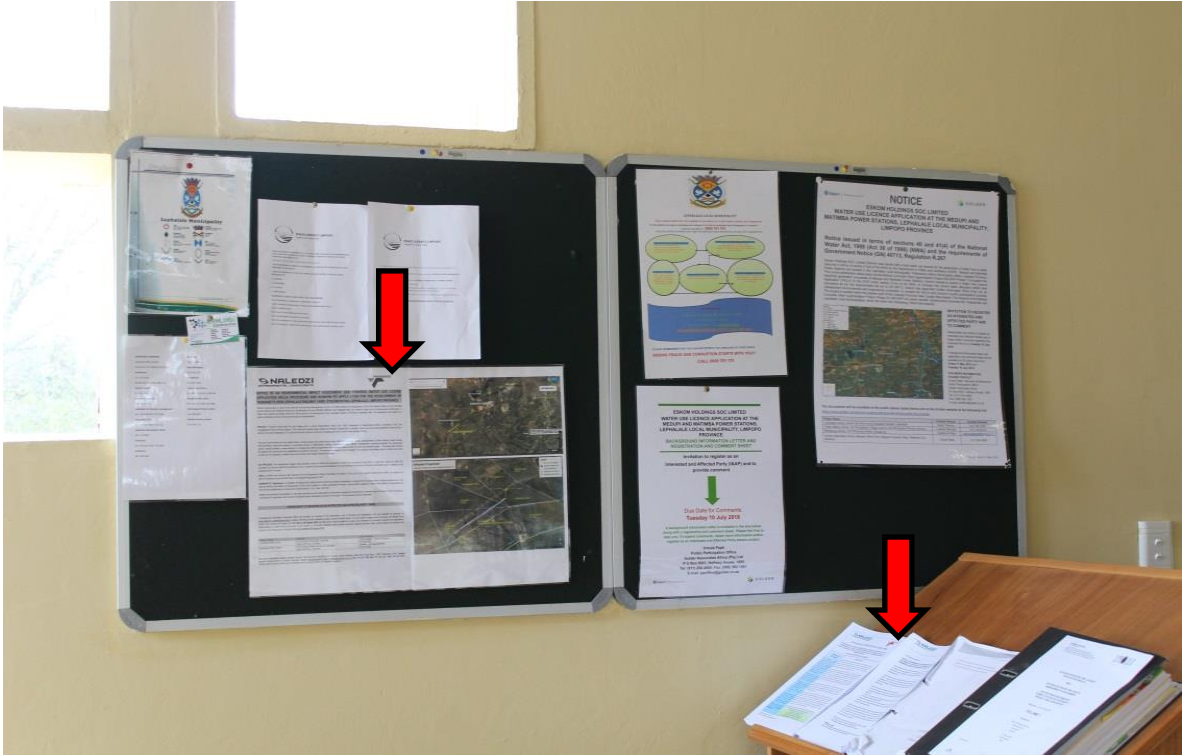


Figure 10: Site Notice 6 placed at Marapong Public Library notice board and the Background Information Documents placed in the EIA display area



Figure 9: Site Notice 7 placed at Marapong Superspar



Figure 11: Aerial Image (courtesy of Google Earth) indicating the location of site notice placement in relation to the new Lephale Railway Yard site in Steenbokpan

Refer to Table 3 below for the GPS coordinates at which site notices were placed in the Steenbokpan area.

Table 3: GPS coordinates for locations at which site notices were placed in Steenbokpan

Site Notice	Longitude	Latitude	Description of Location
8 – Fig 12	23°43'7.20"S	27°32'37.67"E	Gravel road entry point from Afguns Road
9 – Fig 13	23°43'0.25"S	27°32'35.61"E	Entry point to Transnet Servitude road along existing Lephale/Thabazimbi single railway line
10 – Fig 14	23°42'42.02"S	27°27'48.58"E	Farm Gate at entry point to farm Buffelsjagt
11 – Fig 15	23°42'14.02"S	27°24'47.32"E	Farm Gate at entry point to farm Kringgatspruit
12 – Fig 16	23°43'24.90"S	27°24'17.89"E	Confluence of farm gate entry points to farms Taaiboschpan and Enkeldraai

Refer to Figures 13 to 16 for proof of onsite notice placement in the Steenbokpan area.



Figure 12: Site Notice 8 placed at the gravel road entry point (from Afguns Road) to the existing railway line



Figure 13: Site Notice 9 placed at the Transnet servitude road along the existing Lephallale-Thabazimbi single railway line enroute to the new Lephallale Railway Yard site

Proposed Lephallale Railway Yard



Figure 15: Site Notice 10 placed at the entry gate to farm Buffelsjagt 317LQ along the Steenbokpan road



Figure 14: Site Notice 11 placed at the entry gate to farm Kringgatspruit 318LQ along the Steenbokpan road

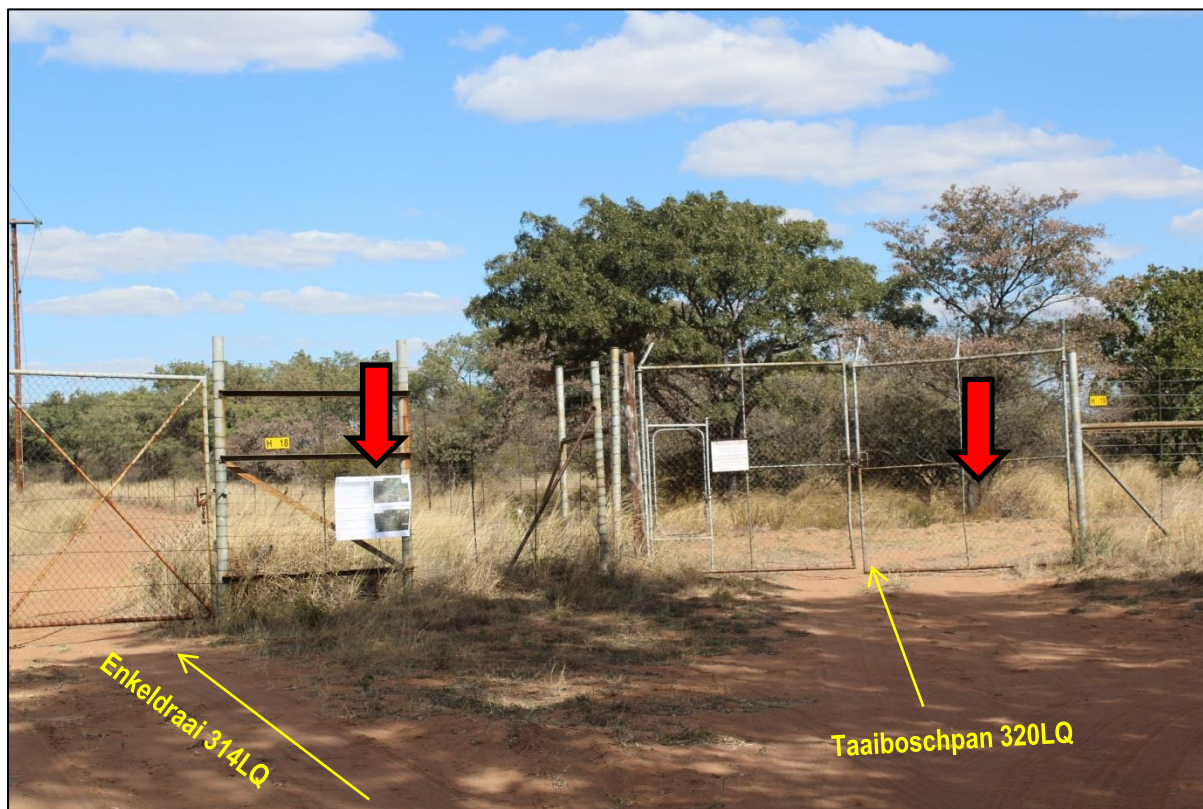


Figure 16: Site Notice 12 placed on the fence line at the entry gates to the farms Enkeldraai 314LQ and Taaiboschpan 320LQ



<p>DRAFT SCOPING REPORT AVAILABILITY AND PUBLIC MEETING</p> <p>SITE NOTICE PHOTOGRAPHS</p>
--

Posters were placed in Lephalale town, Marapong and the Steenbokpan area on 29 October 2018 to bring to the attention of the public that the Draft Scoping Report is available for public review and comment. It also announced the opportunity to attend public meetings for the project. Please refer to the below figures which serve as proof of poster placement in the project area.

Refer to Table 1 below for the GPS coordinates at which posters were placed in Lephalale Town, Marapong and Steenbokpan.

Table 1: Location of Posters placed for proposed Lephalale Railway Yard in the project area

Site Notice	Longitude	Latitude	Description of Location
1 – Fig 1, 2	23°41'14.81"S	27°41'46.75"E	Lephalale Public Library (Douwater Road)
2 – Fig 3, 4	23°41'11.40"S	27°41'47.73"E	Lephalale Local Municipality – Rates & Taxes Pay Point (c/o Dagbreek & Douwater Road)
3 – Fig 5	23°41'23.06"S	27°41'54.98"E	Lephalale Superspar (Dagbreek Road)
4 – Fig 6, 7	23°39'22.24"S	27°37'45.56"E	Marapong Public Library (Phukubye Street)
5 – Fig 8	23°39'18.99"S	27°37'10.64"E	Marapong Superspar
6 – Fig 9, 10	23°43'4.01"S	27°16'44.46"E	Lesedi Thusong Multipurpose Centre, Steenbokpan
7 – Fig 11, 12	23°42'37.45"S	27°16'23.87"E	Bushveld Pub&Grill, Steenbokpan

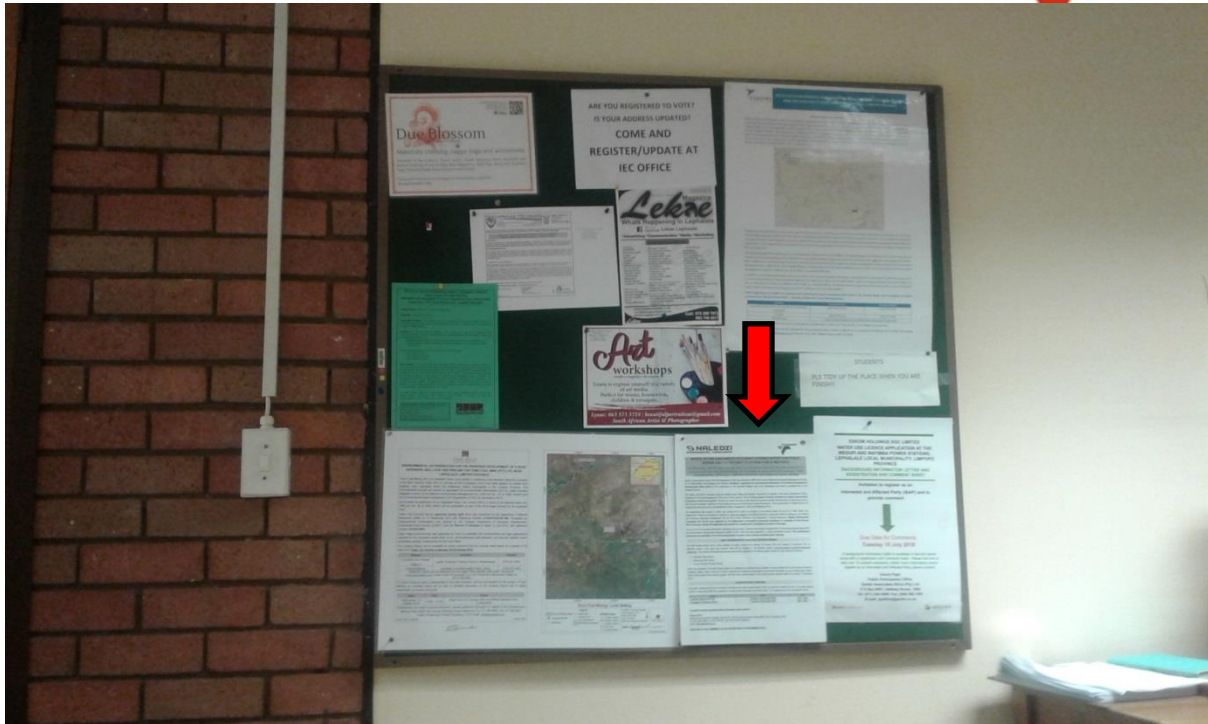


Figure 1: DSR Availability and public meeting poster placed at Lephale Public Library



Figure 2: DSR, Comment Sheets and I&AP notification letters placed at the Lephale Public Library

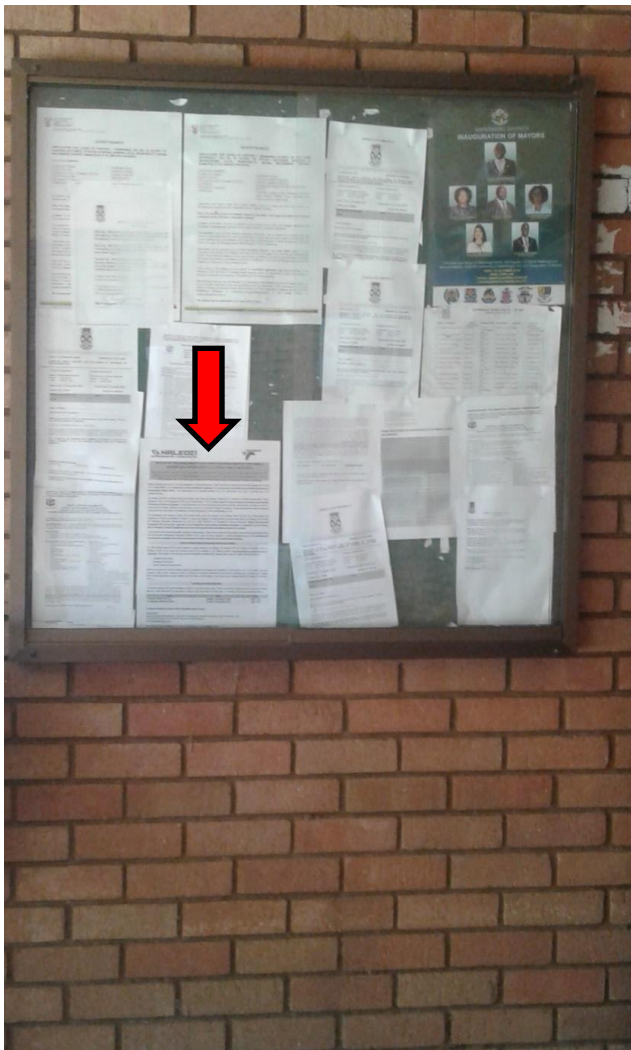


Figure 3: DSR availability and notice of public meetings poster placed at entry to Lephalale Local Municipality offices



Figure 4: Poster placed at the entrance to the Lephalale Local Municipality rates and taxes payment office



Figure 5: Poster placed at Super Spar Community Notice Board along Dou Water Avenue, Lephalale



Figure 6: Poster placed at the entrance to Marapong Public Library

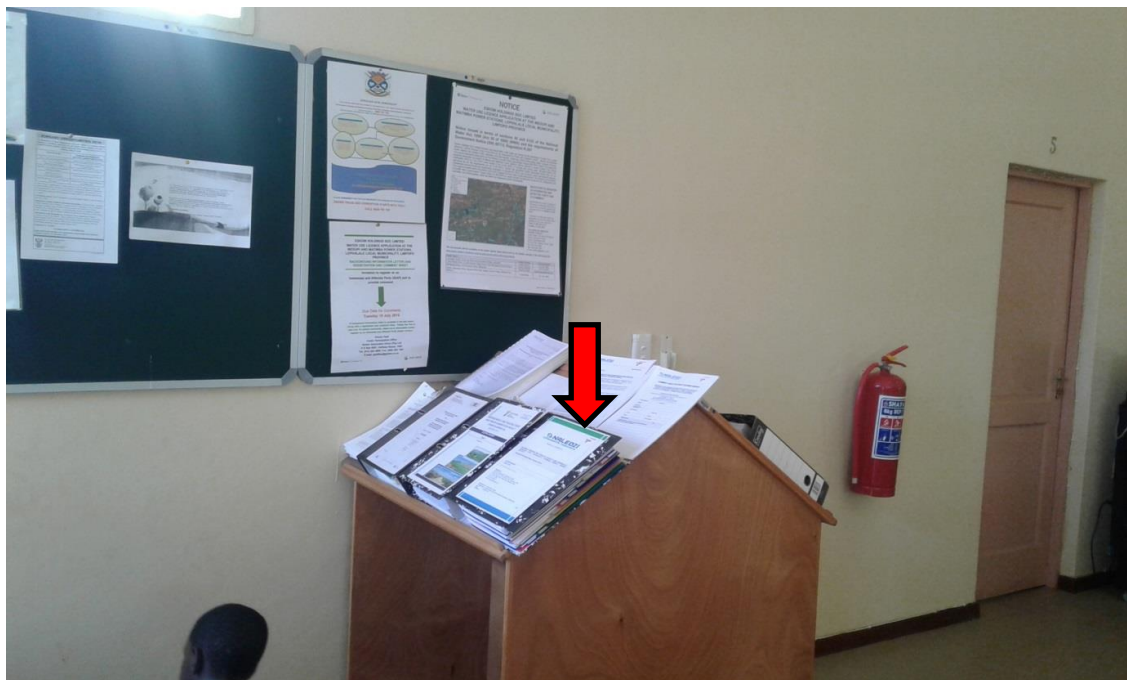


Figure 7: DSR, comment sheets and I&AP Notification Letters available at Marapong Public Library

Proposed Lephalale Railway Yard



Figure 8: Poster placed at entry to Marapong Spar

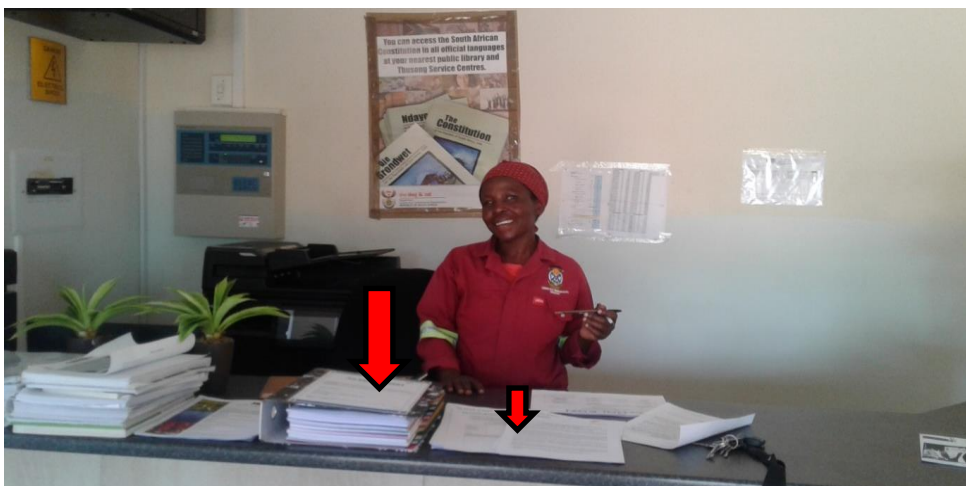


Figure 9: DSR, comments sheets and I&AP Notification Letters received by Christina at the Lesedi Thusong Multipurpose Centre, Steenbokpan

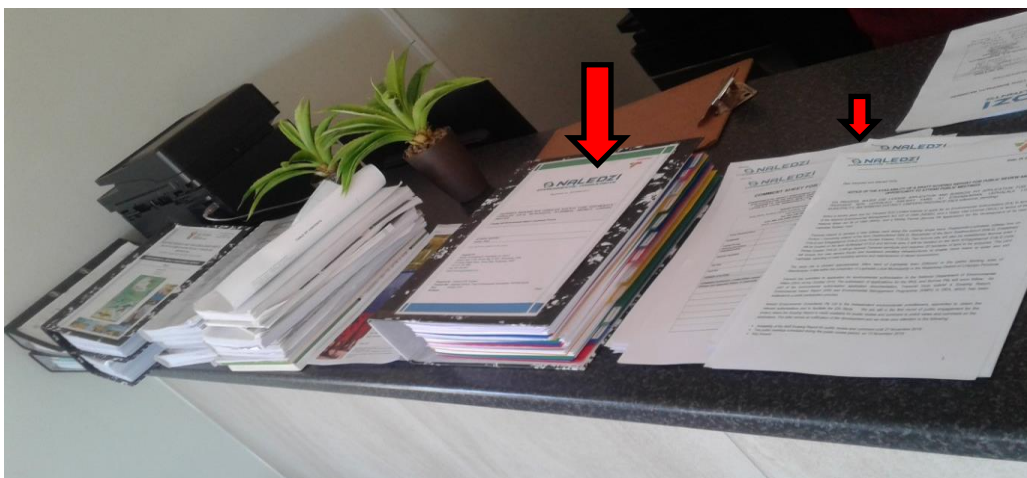


Figure 10: DSR, Comment Sheets and I&AP Notification letter at the front desk of Lesedi Thusong Multipurpose Centre, Steenbokpan



Figure 11: Bushveld Pub and Grill, Steenbokpan



Figure 12: Poster placed on the Notice Board of Bushveld Pub and Grill, Steenbokpan