

PHOTOLOG OF PROJECT SITE



Figure 1: View of existing Thabazimbi-Lephalale single railway (left) and the Boikarabelo Coal Mine’s 100 wagon train holding yard being constructed as part of their approved 36km rail link (right). Photo taken facing south west towards Geelhoutkloof 359LQ

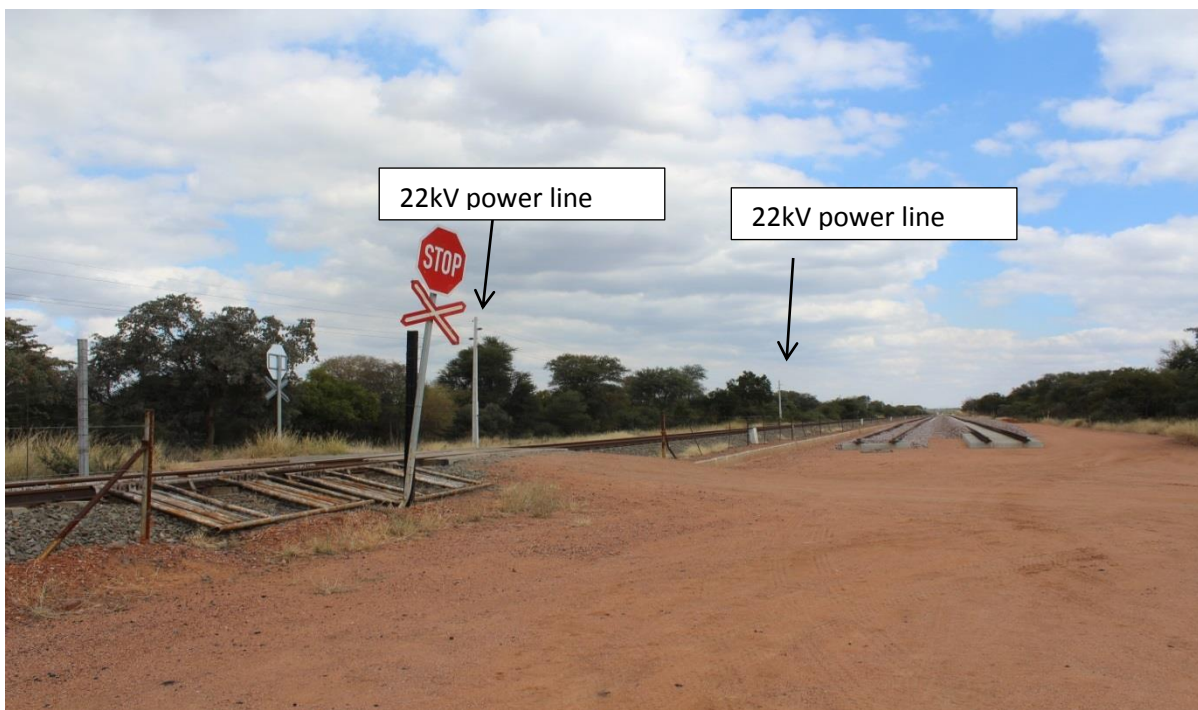


Figure 2: View of the 22kV Eskom power line south of the existing railway track. Photo taken facing south west. Transnet will not interfere with Eskom infrastructure and the yard design will incorporate the 22kV Eskom power line, no relocation required.



Figure 3: View of the existing railway track (right) and cleared servitude (left) for the completion of Boikarabelo 36km rail link



Figure 4: View to the south east (south) of the existing railway track where the railway yard is proposed. The project site is covered in indigenous bushveld vegetation and several protected tree species.

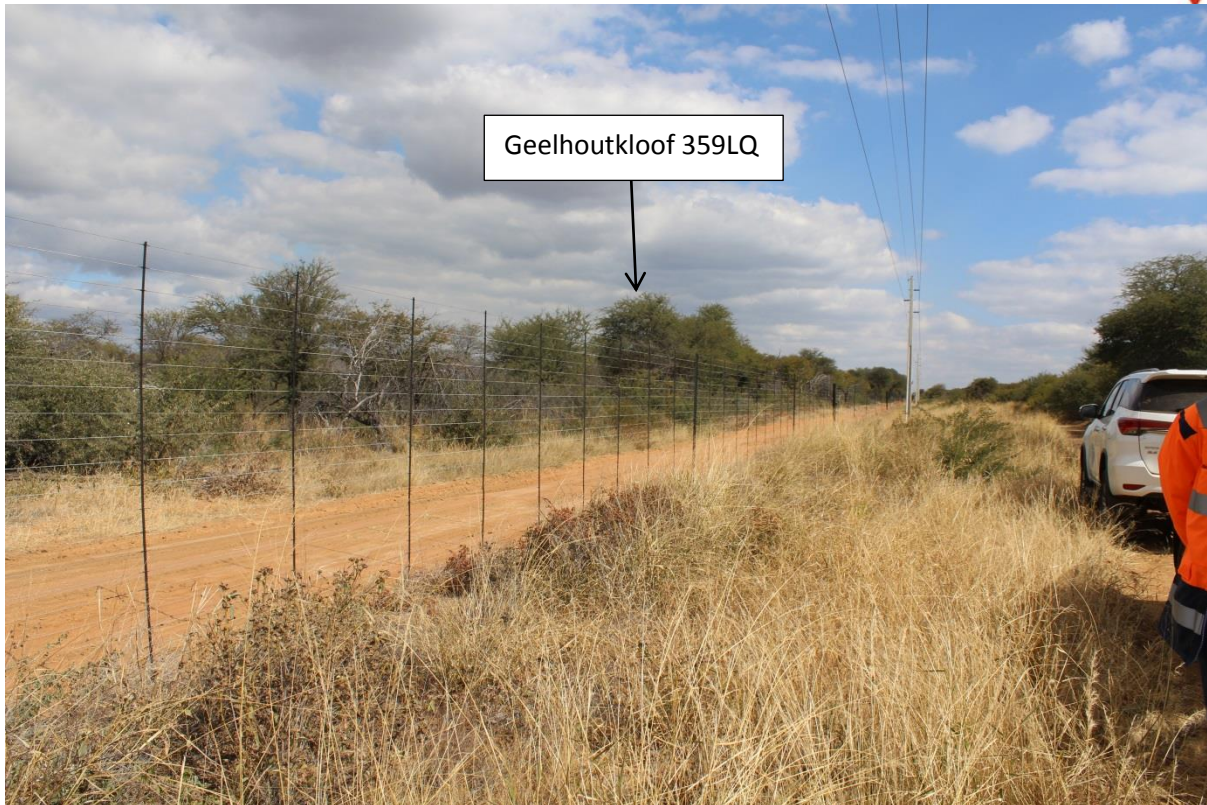


Figure 5: View to the project site and location of the new railway yard. Photo taken south of the existing railway track facing south west. The Eskom 22kV power line routes south of the existing railway track, including Geelhoutkloof 359LQ game farm fence line covered in indigenous bushveld vegetation. Further evident from the photo are the sandy soils.