



Vrede Solar PV Facility Crossroads Green Energy Cluster Northern Cape Province

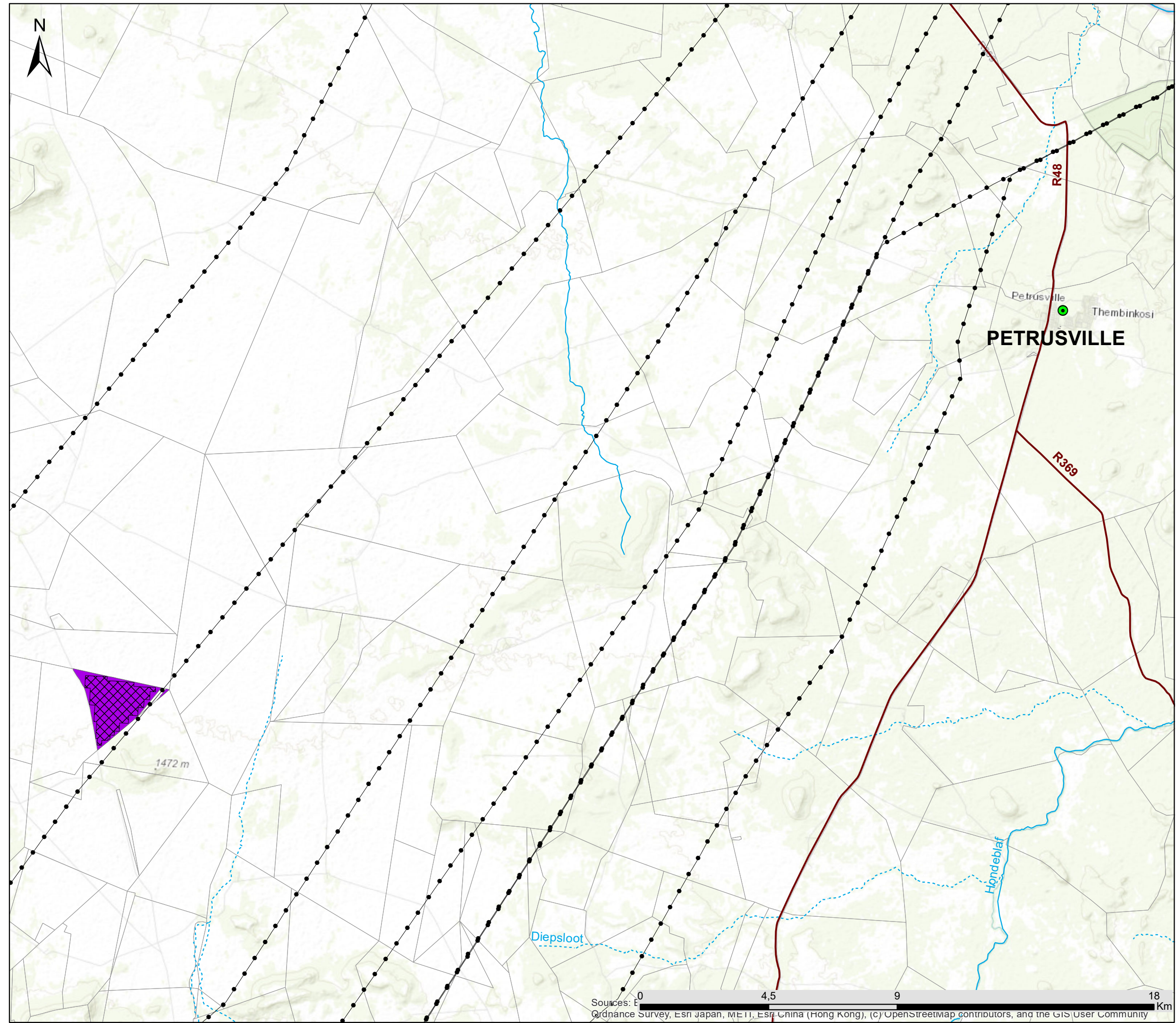
Locality Map

Legend

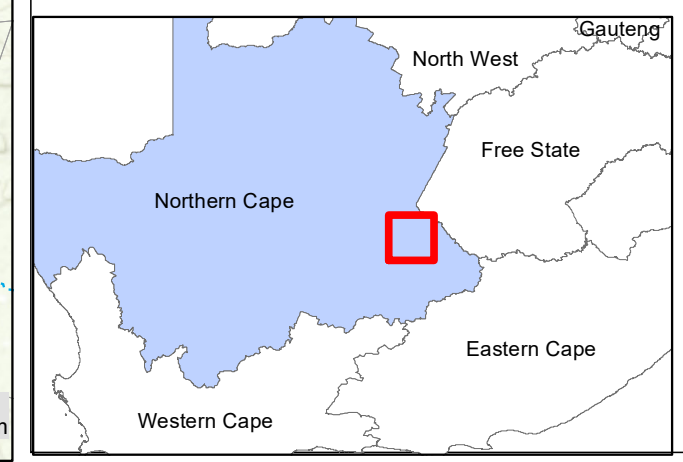
- Town
- Existing Power Line
- Regional Road
- Non-perennial River
- Perennial River
- Vrede Solar PV Facility Development Area
- Vrede Solar PV Facility Development Footprint
- Farm Portions

Proposed Development

- Vrede Solar PV Facility Development Area
- Vrede Solar PV Facility Development Footprint
- Farm Portions



Scale: 125 000
Projection: GCS_WGS_1984
Map Ref: Crossroads Green Energy Cluster



Sources: Ordnance Survey, Esri Japan, METI, Esri China (Hong Kong), (c) OpenStreetMap contributors, and the GIS User Community

0 4,5 9 18 Km

Crossroads Green Energy Cluster Northern Cape Province

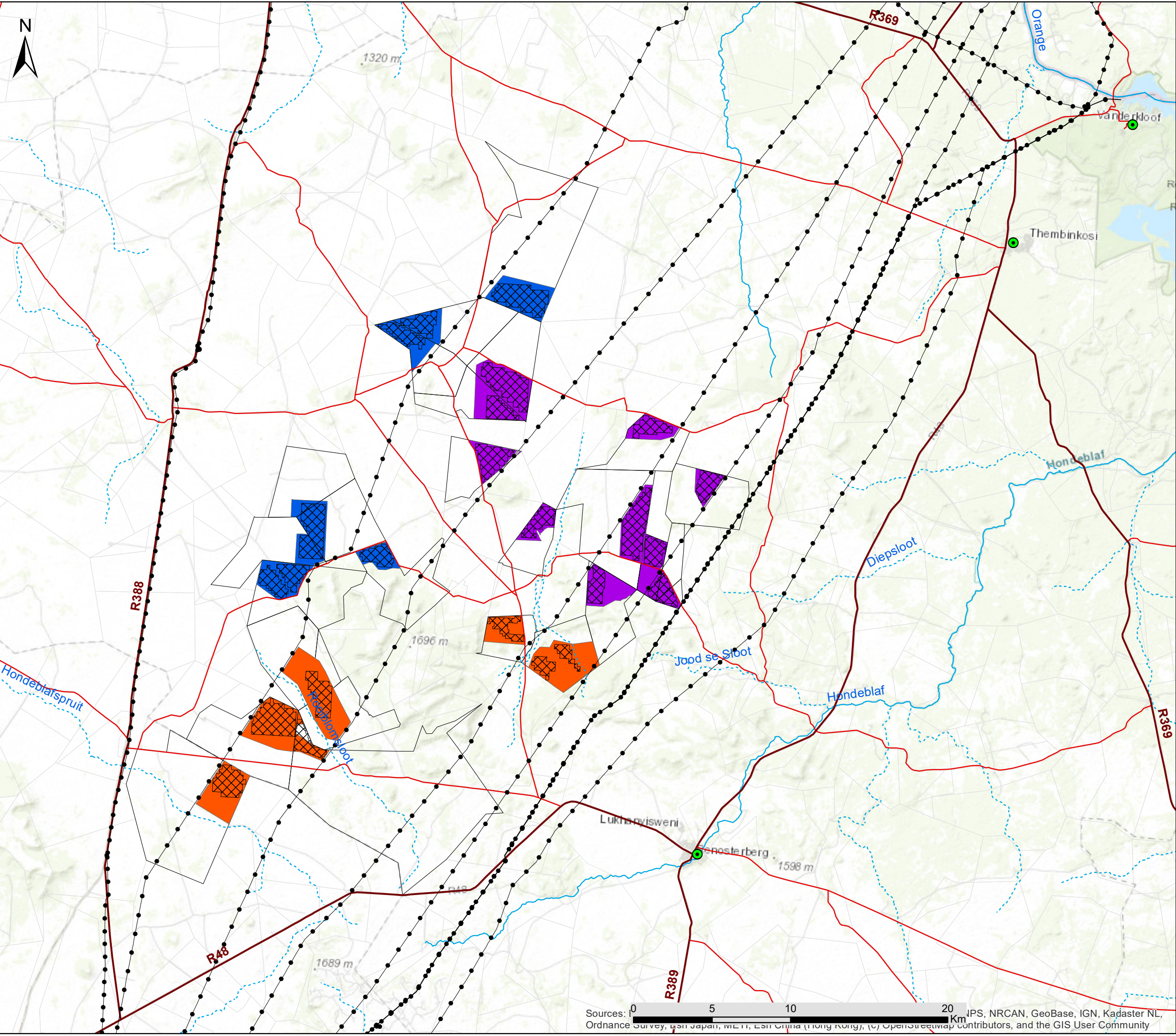
Locality Map

Legend

-  Town
-  Eskom Substation
-  Existing Power Line
-  National Road
-  Regional Road
-  Main Road
-  Non-perennial River
-  Perennial River
-  Phase 1 Solar Facilities
-  Phase 2 Solar Facilities
-  Phase 3 Solar Facilities
-  Affected Farm Portion



Scale: 230 000
 Projection: GCS_WGS_1984
 Map Ref: Hydra B Renewable Energy Cluster









Sources: 0 5 10 20 km
 IPS, NRCAN, GeoBase, IGN, Kadaster NL, Ordnance Survey, Esri Japan, METI, Esri China (Hong Kong), (c) OpenStreetMap contributors, and the GIS User Community

Crossroads Green Energy Cluster Northern Cape Province

Cumulative Map

Legend

-  Phase 1 Solar Facilities
-  Phase 2 Solar Facilities
-  Phase 3 Solar Facilities
-  Affected Farm Portion
-  30 km radius
-  50 km radius

Other Renewable Energy Developments within 50km of the Hydra B Cluster

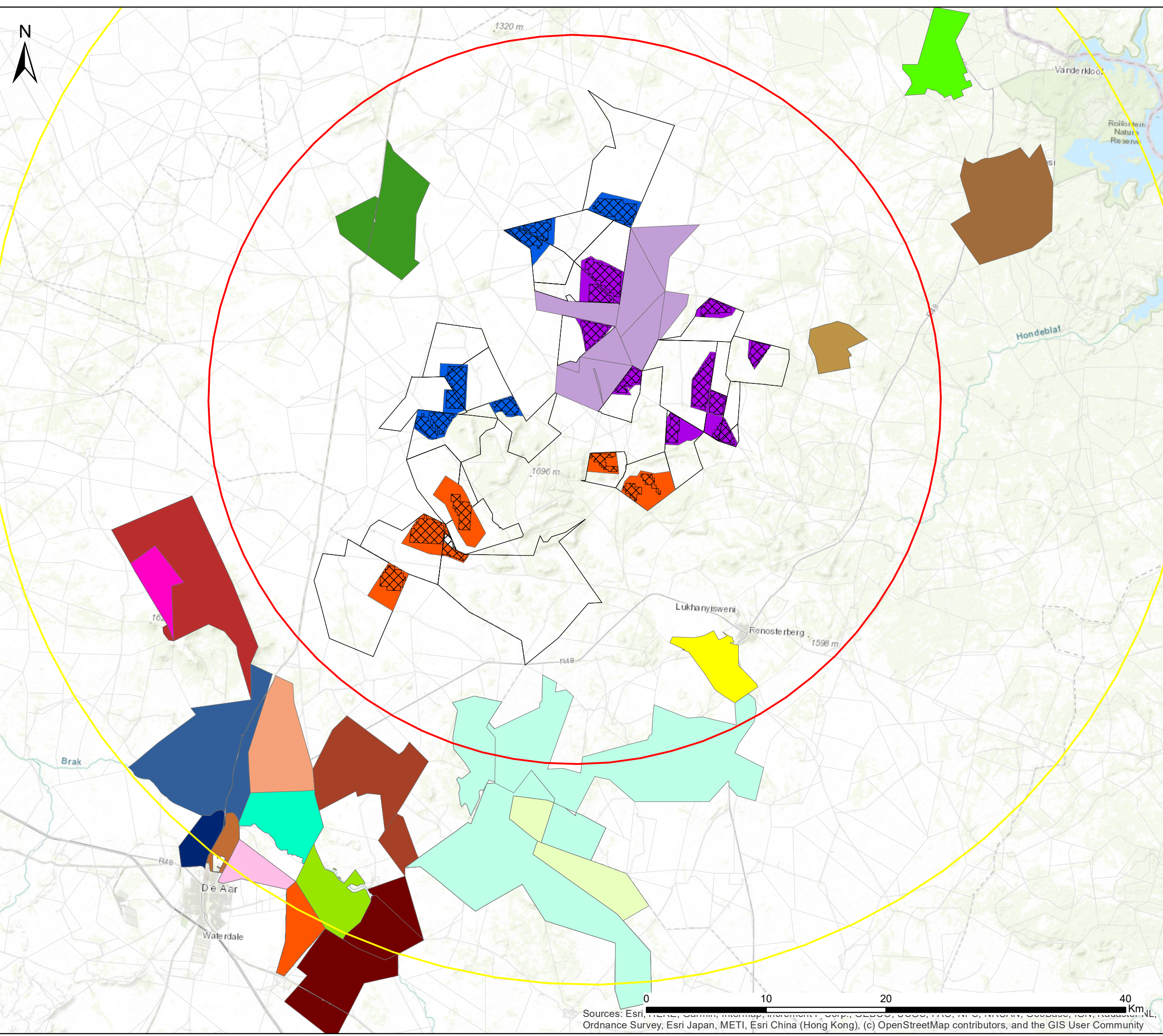
-  300MW Solar Power Plant in Phillipstown (Approved)
-  70 - 100 MW Solar Power Plant in Petrusville (In Progress)
-  Castle wind energy facility project (Approved)
-  Proposed PV facility on farm Blaauwkratz near De Aar (In Process)
-  PV facility on farm Caroluspoort near De Aar (Approved)
-  PV facility on farm Jakhalsfontein near De Aar (Approved)
-  Solar Capital PV facility on farm Loskop (Operational)
-  Renosterberg PV power plant (Approved)
-  Solar Power Generation Facility on the farm Vetlaagte 4 (Approved)
-  Swartwater 75MW solar PV power facility (Approved)
-  Ilanga Lethemba 2 Solar PV Facility (Approved)
-  PV facility on farm Blaauwkratz near De Aar (In Progress)
-  Renewable energy farm on portion 5 of farm Kleinplaas No. 193 (In Progress)
-  75-150mW Photovoltaic Solar Energy Facility on Paarde Valley Farm (Approved)
-  Photovoltaic (Pv) Plant On Portion 29 Of The Farm Paarde 145 (In Progress)
-  Pixley Park Solar PV Facilities (Approved)
-  The Proposed Construction Of Ilanga Lethemba PV Facility
-  Photovoltaic (Solar) Energy Facilities On Du Plessis Dam Farm (In Process)
-  Renosterberg Wind Energy Facility (Approved)
-  The Mulilo De Aar 2 South (Pty) Ltd Wind Energy Facility (Operational)
-  75MW PV SEF on the Remaining Extent of the Farm Vetlaagte 4 (Approved)
-  Scatec Solar Photovoltaic Farms (Approved)
-  Kudu Solar PV Facilities (In Progress)



Scale: 300 000
Projection: WGS_GCS_1984
Map Ref: Crossroad Green Energy Cluster



Sources: Esri, HERE, Garmin, Mapbox, Microsoft, Swatch, GEBCO, USGS, NAVD, NGA, NGA, GEBCO, IGN, NAVD, IGN, NAVD, Ordnance Survey, Esri Japan, METI, Esri China (Hong Kong), (c) OpenStreetMap contributors, and the GIS User Community





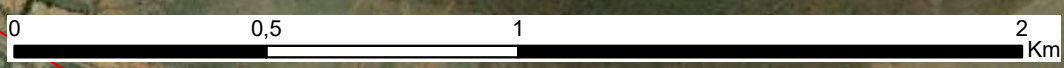
Crossroads Green Energy Vrede Solar PV Facility Northern Cape Province

Layout Map

Legend

- Transmission Lines
- Main Road
- Internal Roads
- Power Stations
- Project Site
- Facility Fenceline
- Fire Break (50m)
- Development Area
- Development Footprint
- Solar PV Arrays
- On-Site Substation
- Office and Storage
- Laydown Area
- Parking Area
- BESS
- Collector Substation
- Affected Property

BAS BERG
5/88



Source: Esri, Maxar, Earthstar Geographics, and the GIS User Community

Scale: 15 000
Projection: WGS_GCS_1984
Map Ref: Crossroad Green Energy Cluster Vrede



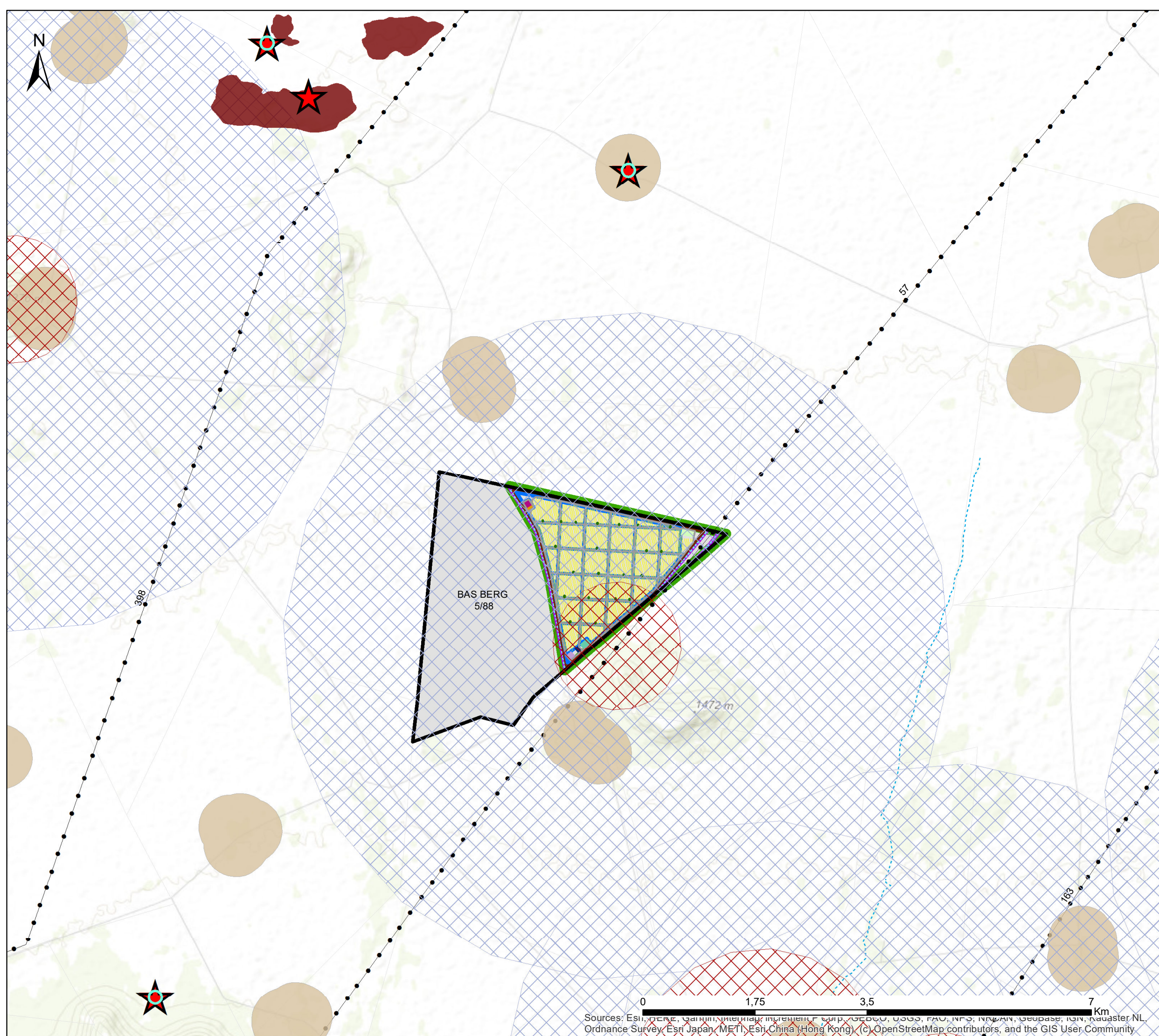
Crossroads Green Energy Vrede Solar PV Facility Northern Cape Province

Layout & Sensitivity Map

Legend

- Transmission Lines
- - - Non-perennial River
- Perennial River
- Internal Roads
- Power Stations
- ▭ Project Site
- - - Facility Fenceline
- Fire Break (50m)
- ▭ Development Area
- ▭ Development Footprint
- Solar PV Arrays
- On-Site Substation
- Office and Storage
- Laydown Area
- Parking Area
- BESS
- Collector Substation
- Affected Property
- Terrestrial Ecology Sensitivities**
- Karoo Grassland - Medium Sensitivity
- Heritage Sensitivities**
- ▭ Heritage 100m Buffer
- ★ Heritage Resources - Moderate Sensitivity
- No-go Areas
- Avifauna Sensitivities**
- ▭ Nest buffers 2km - No Go areas
- ▭ Nest buffers - Low Sensitivity
- Visual Sensitivities**
- Residences - Moderate Sensitivity

Scale: 55 000
 Projection: WGS_GCS_1984
 Map Ref: Crossroad Green Energy Cluster Vrede



Sources: Esri, DeLorme, Garmin, Intermap, increment P Corp., GEBCO, USGS, FAO, NPS, NVEDN, Geobase, IGN, NAVSTAR NL, Ordnance Survey, Esri Japan, METI, Esri China (Hong Kong), (c) OpenStreetMap contributors, and the GIS User Community.

Crossroads Green Energy Solar PV Facilities Cluster Northern Cape Province

Layout & Sensitivity Map

Legend

- Transmission Lines
- Distribution Lines
- Regional Road
- Non-perennial River
- Perennial River
- Proposed Cluster Development**
- Project Sites
- Tafelkop Solar PV
- Koppy Alleen Solar PV
- Vrede Solar PV
- Zionsheuvel Solar PV
- Amper Daar Solar PV
- Wag n Bietjie Solar PV
- Ruspoort 1 - Option A Solar PV
- Ruspoort 1 - Option B Solar PV
- Ruspoort 2 Solar PV
- Middelplaas Solar PV
- Avifauna Sensitivities**
- Nest buffers 2km - No Go areas
- Nest buffers - Low Sensitivity
- Visual Sensitivities**
- Residences - Moderate Sensitivity
- Heritage Sensitivities**
- Heritage 100m Buffer
- Heritage Resources - Moderate Sensitivity
- No-go Areas
- Terrestrial Ecology Sensitivities**
- Karoo Grassland - Medium Sensitivity
- Drainage features - Medium Sensitivity
- Koppies Shrubland - High Sensitivity



Scale: 100 000
 Projection: WGS_GCS_1984
 Map Ref: Crossroad Green Energy Cluster



Crossroads Green Energy Solar PV Facilities Cluster Northern Cape Province

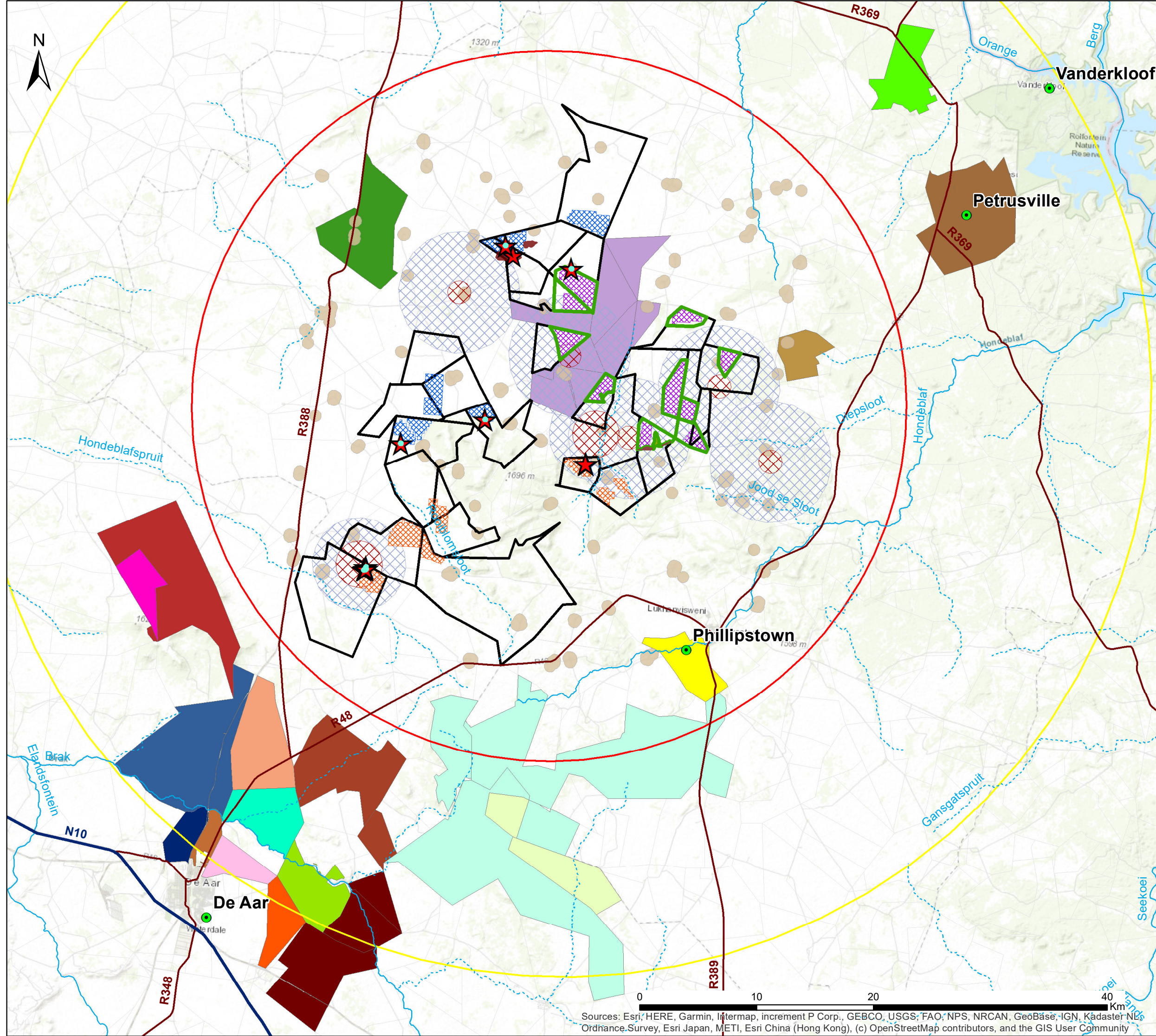
Layout, Sensitivity & Cumulative Map



Legend

- Town
- National Road
- Regional Road
- Non-perennial River
- Perennial River
- 30 km radius
- 50 km radius
- Proposed Cluster Development**
 - Phase 1 Solar Facilities
 - Phase 2 Solar Facilities
 - Phase 3 Solar Facilities
- Project Sites
- Avifauna Sensitivities**
 - Nest buffers 2km - No Go areas
 - Nest buffers - Low Sensitivity
- Visual Sensitivities**
 - Residences - Moderate Sensitivity
- Heritage Sensitivities**
 - Heritage 100m Buffer
 - Heritage Resources - Moderate Sensitivity
- No-go Areas**
 - No-go Areas
- Terrestrial Ecology Sensitivities**
 - Karoo Grassland - Medium Sensitivity
 - Drainage features - Medium Sensitivity
 - Koppies Shrubland - High Sensitivity
- Other Renewable Energy Developments (REEA 2022 Q1)**
 - 300MW Solar Power Plant in Phillipstown (Approved)
 - 70 - 100 MW Solar Power Plant in Petrusville (In Progress)
 - Castle wind energy facility project (Approved)
 - Proposed PV facility on farm Blaauwkratz near De Aar (In Process)
 - PV facility on farm Caroluspoort near De Aar (Approved)
 - PV facility on farm Jakhalsfontein near De Aar (Approved)
 - Solar Capital PV facility on farm Loskop (Operational)
 - Renosterberg PV power plant (Approved)
 - Solar Power Generation Facility on the farm Vetlaagte 4 (Approved)
 - Swartwater 75MW solar PV power facility (Approved)
 - Ilanga Lethemba 2 Solar PV Facility (Approved)
 - PV facility on farm Blaauwkratz near De Aar (In Process)
 - Renewable energy farm on portion 5 of farm Kleinplaas No. 193 (In Process)
 - 75-150mw Photovoltaic Solar Energy Facility on Paarde Valley Farm (Approved)
 - Photovoltaic (Pv) Plant On Portion 29 Of The Farm Paarde 145 (In Process)
 - Pixley Park Solar PV Facilities (Approved)
 - The Proposed Construction Of Ilanga Lethemba PV Facility
 - Photovoltaic (Solar) Energy Facilities On Du Plessis Dam Farm (In Process)
 - Renosterberg Wind Energy Facility (Approved)
 - The Mulilo De Aar 2 South (Pty) Ltd Wind Energy Facility (Operational)
 - 75MW PV SEF on the Remaining Extent of the Farm Vetlaagte 4 (Approved)
 - Scatec Solar Photovoltaic Farms (Approved)
 - Kudu Solar PV Facilities (In Progress)

Scale: 300 000
 Projection: WGS_GCS_1984
 Map Ref: Crossroad Green Energy Cluster



Sources: Esri, HERE, Garmin, Intermap, increment P Corp., GEBCO, USGS, FAO, NPS, NRCAN, GeoBase, IGN, Kadaster NL, Ordnance Survey, Esri Japan, METI, Esri China (Hong Kong), (c) OpenStreetMap contributors, and the GIS User Community