

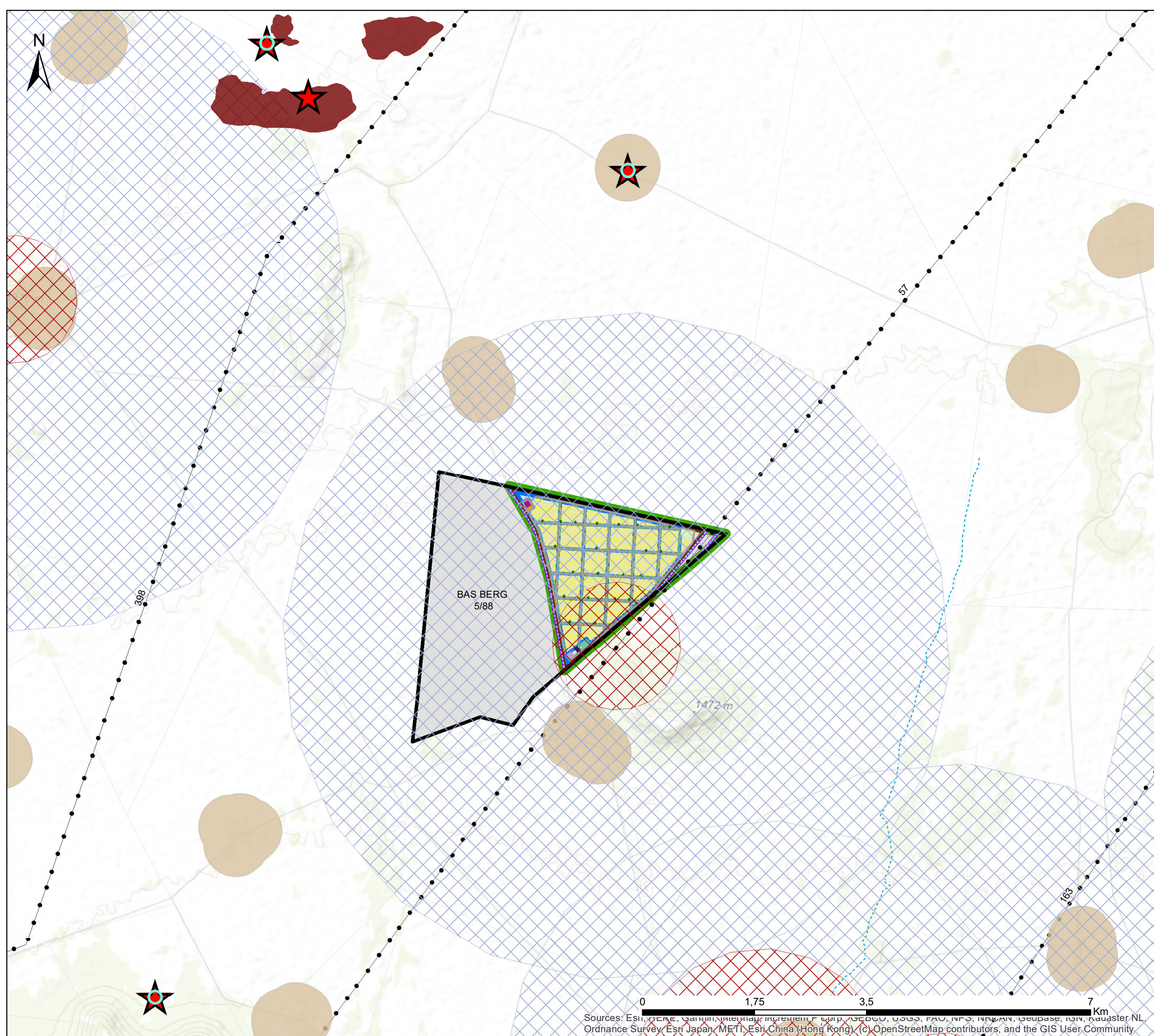
Crossroads Green Energy Vrede Solar PV Facility Northern Cape Province

Layout & Sensitivity Map

Legend

- Transmission Lines
- Non-perennial River
- Perennial River
- Facility Layout**
- Internal Roads
- Power Stations
- Project Site
- Facility Fenceline
- Fire Break (50m)
- Development Area
- Development Footprint
- Solar PV Arrays
- On-Site Substation
- Office and Storage
- Laydown Area
- Parking Area
- BESS
- Collector Substation
- Affected Property
- Terrestrial Ecology Sensitivities**
- Karoo Grassland - Medium Sensitivity
- Heritage Sensitivities**
- Heritage 100m Buffer
- Heritage Resources - Moderate Sensitivity
- No-go Areas
- Avifauna Sensitivities**
- Nest buffers 2km - No Go areas
- Nest buffers - Low Sensitivity
- Visual Sensitivities**
- Residences - Moderate Sensitivity

Scale: 55 000
 Projection: WGS_GCS_1984
 Map Ref: Crossroad Green Energy Cluster Vrede



Sources: Esri, DeLorme, Garmin, Intermap, increment P Corp., GEBCO, USGS, FAO, NPS, NVEDN, Geobase, IGN, NAVSTAR NL, Ordnance Survey, Esri Japan, METI, Esri China (Hong Kong), (c) OpenStreetMap contributors, and the GIS User Community.