



Shango Solutions
H.H.K. House
Cnr Ethel Ave and Ruth Crescent
Northcliff
P.O. Box 2591, Cresta, 2118, South Africa
Tel: 011 678 6504
Fax: 011 678 9731

27th July 2018

Dear Interested and Affected Party/Landowner /Land Occupier,

**NOTIFICATION REGARDING AN APPLICATION FOR A PROSPECTING RIGHT AND ENVIRONMENTAL AUTHORISATION ON
VARIOUS FARMS WITHIN THE VREDEFORT MAGISTERIAL DISTRICT, NEAR PARYS IN THE FREE STATE PROVINCE
(VREDEFORT WEST EXT PROSPECTING RIGHT PROJECT - FS 30/5/1/1/3/2/1/10521 EM)**

On behalf of our client, **White Rivers Exploration (Pty) Ltd:**

Shango Solutions (Pty) Ltd (Shango Solutions) has been appointed by White Rivers Exploration (Pty) Ltd (White Rivers Exploration) to assist in preparing and submitting a Basic Assessment Report (BAR), Environmental Management Programme (EMPR) and to undertake a Public Participation Process (PPP), in support of an application for a Prospecting Right and Environmental Authorisation. You have been identified as a potential Interested and Affected Party (I&AP). The Prospecting Right and Environmental Authorisation application will be undertaken in accordance with the requirements of the Minerals and Petroleum Resources Development Act, 2002 (Act 28 of 2002, as amended) (MPRDA) and the associated regulations and the National Environmental Management Act, 1998 (Act 107 of 1998, as amended) (NEMA) and the associated regulations.

White Rivers Exploration submitted a Prospecting Right and an Environmental Authorisation application to the Department of Mineral Resources (DMR) Free State Regional Office. The application for the Prospecting Right was accepted by the DMR Free State Regional Office on the 25th June 2018. If the application is granted, White Rivers Exploration will be enabled to ascertain if economically viable mineral deposits exist within the application area. The minerals of interest include: gold, silver, coal, cobalt, copper, diamond (alluvial), iron, manganese, molybdenum, nickel, lead, platinum group metals, rare earths, sulphur, uranium, tungsten and zinc. The proposed prospecting programme will be completed within five (5) years.

It is anticipated that the following non-invasive and invasive activities will be undertaken during prospecting:

Non-invasive prospecting activities

- Acquisition, capture and synthesis of historic data
- Desktop studies
- Site visit
- Surface mapping and sampling
- Geological modelling
- Geophysical surveys (if required)
- Resource estimation
- Concept study

Invasive prospecting activities

- Trenching (two trenches)

The application area covers 18 623.73 hectares over 90 farm portions and it is situated within the Vredefort Magisterial District approximately 20.3 kilometres (km) west of Parys, in the Free State Province of South Africa.

Kindly refer to the accompanying Background Information Document (BID) for more information about this project. Afrikaans and Sesotho versions of the BID are obtainable from our website (<http://www.shango.co.za/public-documents/>).

It is anticipated that the following NEMA listed activity under Listing Notices 1 and 3 of the NEMA 2014 Environmental Impact Assessment (EIA) Regulations (as amended) will be triggered by this application:

- **GN 327 (of 2017), Activity 20:** Any activity including the operation of that activity which requires a prospecting right in terms of Section 16 of the Mineral and Petroleum Resources Development Act, 2002 (Act 28 of 2002), including (a) associated infrastructure, structures and earthworks, directly related to prospecting of a mineral or (b) the primary processing of a mineral

resource including winning, extraction, classifying, concentrating, crushing, screening or washing; but excluding the secondary processing of a mineral resource, including the smelting, beneficiation, reduction, refining, calcining, or gasification of the mineral resource.

- **GN 324 (of 2017), Activity 12(b):** The clearance of an area of 300 square metres or more of indigenous vegetation except where such clearance of indigenous vegetation is required for maintenance purposes undertaken in accordance with a maintenance management plan (i) within any critically endangered ecosystem listed in terms of section 52 of the NEMA or prior to the publication of such a list, within an area that has been identified as critically endangered in the National Spatial Biodiversity Assessment 2004 and (ii) within critical biodiversity areas identified in bioregional plans.

The application for a Prospecting Right and Environmental Authorisation process will be carried out as stipulated in Section 16 of the MPRDA and Chapter 4 of the 2014 EIA Regulations (as amended) (GN 326) promulgated under the NEMA. A public notification and involvement is being carried out as part of the Basic Assessment process.

This notice is in accordance with clause 16 of the MPRDA and Chapter 6 of GN 326 of the NEMA, which requests that White Rivers Exploration notify in writing and consult with the land owner or lawful occupier and any other affected party. The results of the consultation will be included in the BAR submission in order for the DMR to adjudicate on the application.

Interested and Affected Parties (I&APs) are provided a period of 30 days to register and comment on the proposed activity and application. Should you wish to register as an I&AP for this project and submit any comments, concerns or objections you may have regarding the project, please submit your name, contact details, reason for your interest and issues/concerns, in writing or telephonically, to Shango Solutions, **by no later than 31st August 2018**. Please include the project reference name (Vredefort West Ext Prospecting Right Project) in all correspondence. Please note that only registered I&APs will be notified of further opportunities for involvement in this process.

Any queries, comments, or concerns with regards to this application can be directed to Shango Solutions:

- Tel: 011 678 6504
- Fax: 011 678 9731
- E-mail: zizo@shango.co.za
- Project name: Vredefort West Ext Prospecting Right
- Contact person: Ms Zizo Siwendu (Environmental Assessment Practitioner/EAP)
- Postal address: P.O. Box 2591, Cresta, 2118, South Africa

Any comments or concerns regarding this application can also be directed to the Department of Mineral Resources (and a copy sent to Shango Solutions):

- Tel: 057 391 1385
- Fax: 057 357 6003
- E-mail: Nkateko.Mhlari@dmr.gov.za
- Contact person: Ms Nkateko Mhlari
- DMR reference number: FS 30/5/1/1/3/2/1/10521 EM
- Postal address: Private Bag X33, Welkom, 9460
- Attention: Environmental Management Directorate DMR – Free State Regional Office

Please feel free to contact the undersigned if you have any queries or concerns.

Best regards,



Zizo Siwendu



Shango Solutions
H.H.K. House
h/v Ethellaan en Ruthsingel
Northcliff
Posbus 2591, Cresta, 2118, Suid-Afrika
Tel: 011 678 6504
Faks: 011 678 9731

27 Julie 2018

Geagte Belanghebbende en Geraakte Party/Grondeienaar/Grondbewoner,

KENNISGEWING AANGAANDE 'N AANSOEK OM PROSPEKTEERREG EN OMGEWINGSMAGTIGING OP VERSKEIE PLASE BINNE DIE VREDEFORT-MAGISTRAATSDISTRIK, NABY PARYS IN DIE VRYSTAAT-PROVINSIE (VREDEFORT-WES UITBROSPEKTEERREGPROJEK - FS 30/5/1/1/3/2/1/10521 EM)

Namens ons kliënt, **White Rivers Exploration (Pty) Ltd**:

Shango Solutions (Pty) Ltd (Shango Solutions) is aangestel deur White Rivers Exploration (Pty) Ltd (White Rivers Exploration) om te help met die voorbereiding en voorlegging van 'n Basiese Assesseringverslag (BAV), Omgewingsbestuursprogramverslag (OBPV) en om 'n Openbare Deelnameproses (ODP) te onderneem ter ondersteuning van 'n aansoek vir 'n Prospekterreg en Omgewingsmagtiging. U is geïdentifiseer as 'n potensieel Belanghebbende en Geraakte Party (B&GP). Die aansoek om Prospekterreg en Omgewingsmagtiging sal onderneem word in ooreenstemming met die vereistes van die Wet op die Ontwikkeling van Minerale en Petroleumhulpbronne, 2002 (Wet 28 van 2002, soos gewysig) (WOMPH) en die gepaardgaande regulasies, en die Wet op Nasionale Omgewingsbestuur, 1998 (Wet 107 van 1998, soos gewysig) (WNOB) en die gepaardgaande regulasies.

White Rivers Exploration het 'n aansoek om Prospekterreg en Omgewingsmagtiging voorgelê aan die Departement van Mineralehulpbronne (DMH): Vrystaatse Streekskantoor. Die aansoek om Prospekterreg is aanvaar deur die DMH Vrystaatse Streekskantoor op die 25^{ste} Junie 2018. Indien die aansoek toegestaan word, sal dit White Rivers Exploration in staat stel om vas te stel of daar ekonomies lewensvatbare mineraalneerslagte binne die aansoekgebied voorkom. Die minerale waarin daar belanggestel word, is onder andere: goud, silwer, steenkool, kobalt, koper, diamante (alluviaal), yster, mangaan, molibdeen, nikkel, lood, platinumgroepmetale, seldsame aardelemente, swael, uraan, wolfram en sink. Die voorgename prospekterprogram sal binne vyf (5) jaar voltooi wees.

Daar word verwag dat slegs die volgende nie-indringende en indringende aktiwiteite gedurende die prospektering sal plaasvind:

Nie-indringende prospekteraktiwiteite

- Verkryging, vaslegging en samevatting van historiese data
- Lessenaarstudies
- Terreinbesoek
- Oppervlakkartering en toetsing
- Geologiese modellering
- Geofisiese opnames (indien vereis)
- Hulpbronskatting
- Konsepstudie

Indringende prospekteraktiwiteite

- Sloopgrawing (twee slote)

Die aansoekgebied dek 18 623.73 hektaar wat oor 90 plaasdele strek en is geleë binne die Vredefort-Magistraatsdistrik, ongeveer 20.3 kilometers (km) wes van Parys, in die Vrystaat-provinsie van Suid-Afrika.

Verwys asseblief na die meegaande agtergrondinligtingsdokument (AID) vir meer inligting oor hierdie projek. Weergawes van die AID in Afrikaans en Sesotho is op ons webtuiste beskikbaar (<http://www.shango.co.za/public-documents/>).

Daar word verwag dat die volgende WNOB-gelyste aktiwiteit onder Lyskennisgewing 1 en 3 van die WNOB 2014 Omgewingsimpakassessering (OIA) Regulasies (soos gewysig) deur hierdie aansoek veroorsaak sal word:

- **RK 327 (van 2017), Aktiwiteit 20:** Enige aktiwiteit, ingeslote die bedryf van 'n aktiwiteit wat 'n prospekterreg kragtens artikel 16 van die Wet op die Ontwikkeling van Minerale en Petroleumhulpbronne, 2002 (Wet 28 van 2002), vereis, ingeslote (a) gepaardgaande infrastruktuur, strukture en grondwerk, wat direk verband hou met prospektering vir 'n mineraal, of (b) die primêre

verwerking van 'n minerale hulpbron, ingeslote winning, onttrekking, klassifikasie, konsentrasie, vergruising, sifting of was; maar uitgeslote die sekondêre verwerking van 'n minerale hulpbron, ingeslote smelting, veredeling, reduksie, raffinering, kalsinerig of vergassing van die minerale hulpbron.

- **RK 324 (van 2017), Aktiwiteit 12(b):** Die uithaal van inheemse plantegroei oor 'n gebied van 300 vierkante meter of meer, buiten waar sodanige uithaal van sodanige inheemse plantegroei vir onderhoudsdoeleindes, onderneem in ooreenstemming met die onderhoudsplan, nodig is (i) binne enige kritiek-bedreigde ekosisteme wat ingevolge artikel 52 van die WNOB gelys is, binne 'n gebied wat as kritiek-bedreig in die Nasionale Ruimtelike Biodiversiteitsassessering 2004 geïdentifiseer is en (ii) binne kritieke biodiversiteitsgebiede soos in biostreeksplanne geïdentifiseer.

Die aansoek vir die proses om Prospekterreg en Omgewingsmagtiging sal uitgevoer word soos gestipuleer in artikel 16 van die WOPPH en hoofstuk 4 van die 2014 OIA-regulasies (soos gewysig) (RK 326) soos openbaargemaak onder die WNOB. 'n Openbare kennisgewing en betrokkenheid word uitgevoer as deel van die basiese assesseringsproses.

Hierdie kennisgewing met klousule 16 van die WOPPH en hoofstuk 6 van RK 326 van die WNOB, versoek dat White Rivers Exploration skriftelik kennis gee en beraadslaag met die grondeienaar of wetlike bewoner en enige ander geraakte party. Die resultaat van die konsultasie sal ingesluit word in die BAV-voorlegging sodat DMH uitspraak oor die aansoek kan lewer.

Belanghebbende en Geraakte Partye (B&GPs) kry 'n tydperk van 30 dae om te registreer en kommentaar te lewer oor die voorgenome aktiwiteit en aansoek. Indien u wil registreer as 'n B&GP vir hierdie projek en enige kommentare, bekommernisse of besware wil lug wat u dalk oor die projek het, moet u asseblief u naam, kontakbesonderhede, rede vir belangstelling en kwessies/bekommernisse skriftelik of telefonies voorlê aan Shango Solutions, **teen nie later nie as die 31^{ste} Augustus 2018**. Sluit asseblief die projek se verwysingsnaam (Vredefort-Wes Uitbr Prospekterregprojek) by alle korrespondensie in. Neem asseblief kennis dat slegs geregistreerde B&GPs in kennis gestel sal word van verdere geleenthede vir betrokkenheid by hierdie proses.

Enige navrae, kommentaar of bekommernisse ten opsigte van hierdie aansoek kan gerig word aan Shango Solutions by:

- Tel: 011 678 6504
- Faks: 011 678 9731
- E-pos: zizo@shango.co.za
- Projeknaam: Vredefort-Wes Uitbr Prospekterreg
- Kontakpersoon: Me Zizo Siwendu (Omgewingsassesseringspraktisyn/OAP)
- Posadres: Posbus 2591, Cresta, 2118, Suid-Afrika

Enige navrae, kommentaar of bekommernisse ten opsigte van hierdie aansoek kan gerig word aan Shango Solutions:

- Tel: 057 391 1385
- Faks: 057 357 6003
- E-pos: Nkateko.Mhlari@dmr.gov.za
- Kontakpersoon: Me Nkateko Mhlari
- DMH verwysingsnommer: FS 30/5/1/1/3/2/1/10521 EM
- Posadres: Privaat Sak X33, Welkom, 9460
- Vir aandag: Direktoraat: Omgewingsbestuur DMH – Vrystaatse Streekskantoor

Kontak gerus ondergetekende indien u enige navrae of bekommernisse het.

Beste groete,



Zizo Siwendu



Shango Solutions

H.H.K. House
Cnr Ethel Ave and Ruth Crescent
Northcliff
P.O. Box 2591, Cresta, 2118, South Africa
Tel: 011 678 6504
Fax: 011 678 9731

27 Phupu 2018

Mothahaselli le Moamehi/ Monga Mobu/ Modudi wa Mobu ya ratehang,

TSEBISO E MABAPI LE KOPO YA TOKELO YA HO BATLA DIMINIRALE LE TUMELLO YA TIKOLOHO MAPOLASING A FAPAFAPANENG KA HARE HO SETEREKE SE TLASA TAOLO YA MASETERATA WA VREDEFORT, HAUFI LE PARYS PROVENSENG YA FREISTATA (VREDEFORT WEST EXT PROSPECTING RIGHT PROJECT - FS 30/5/1/1/3/2/1/10521 EM)

Lebitsong la tlaente ya rona, **White Rivers Exploration (Pty) Ltd**

Shango Solutions (Pty) Ltd (Shango Solutions) e thontswe ke White Rivers Exploration (Pty) Ltd (White Rivers Exploration) ho thusa ho hlophisa le ho romela Raporoto ya Tekolo ya Motheo (Basic Assessment Report (BAR)), Lenaneo la Taolo ya Tikoloho (EMPR) le ho tsamaisa Tshebetsa ya ho ba le Seabo ha Setjhaba (Public Participation Process (PPP)), ho tshehetsa kopo ya Tokelo ya ho Batla Diminerale le Tumello ya Tikoloho. O hlwailwe jwalo ka Mothahaselli le Moamehi (Interested and Affected Party (I&AP)). Kopo ya Tokelo ya ho Batla Diminerale le Tumello ya Tikoloho e tla tsamaiswa ho latela ditlhoko tsa Molao wa Ntshetsopele ya Diminerale le Mehloodi ya Petroliamo wa 2002, (Molao wa 28 wa 2002, jwalo ka ha o nnile wa fetofetolwa) (Minerals and Petroleum Resources Development Act (MPRDA)) le melawana e amanang le ona le Molao wa Taolo ya Tikoloho wa Naha wa 1998, (Molao wa 107 wa 1998 jwalo ka ha o nnile wa fetofetolwa) (National Environmental Management Act (NEMA)) le melawana e amanang le ona.

White Rivers Exploration e rometse Kopo ya Tokelo ya ho Batla Diminerale le Tumello ya Tikoloho Ofising ya Lebatowa ya Freistata ya Lefapha la Mehloodi ya Diminerale (Department of Mineral Resources (DMR)). Kopo ya Tokelo ya ho Batla Diminerale e ile ya amohelwa ke Ofisi ya Lebatowa ya Freistata ya DMR mohla la 25 Phupjane 2018. Haeba kopo e dumelwa, White Rivers Exploration e tla tseba ho netefatsa haeba masalla a diminerale a teng sebakeng seo a ka ba le bokgoni ba ho atisa moruo ho ya pele. Diminerale tse thahasellwetsweng ke gauta, silivera, mashala, colbalt, koporo, taemane (e fumanwang bokahodimong ba lefatshe), tshepe, manganese, molybdenum, nikel, loto, sehlopha sa dimetale tsa polatinamo, rare earths, safire, yuraniamo, tungsten le zinki. Lenaneo la ho Batla Diminerale le lohothilweng le tla phethelwa mahareng a dilemo tse hlano (5).

Ho lebeletswe hore ke feela mesebetsi e latelang e kekeng ya atoloha e tla etswa nakong ya ho batla diminerale:

Mesebetsi e kekeng ya etswa nakong ya ho batla diminerale

- Phumantsho, rekotwa le ho tswakwa ha datha (dintlha) tsa nako e fetileng
- Boithuto ba sethatho bo etswang ka ho fuputsa
- Ketelo ya setsha
- Ho etsa mmapa wa ka hodimo ho mobu le ho sampola
- Ho etsa mmotlolo wa jiolojikhale
- Diphuputso tsa jiofisikhale (haeba o hlokeha)
- Kakanyo ya mehloodi
- Boithuto ba mohopolo

Mesebetsi e tla etswa nakong ya ho batla diminerale

- Ho etsa diforo (diforo tse pedi)

Kopo e namme dihekthara tse 18 623.73 dikarolong tse 90 tsa polasi mme e fumanwa ka hare ho ho Setereke sa Maseterata wa Vredefort ho ka bang dikilomithara tse 20.3 ka bophirinma of Parys, Provenseng ya Freistata e Afrika Borwa.

Ka kopo tadima Tokomane ya Tlhisoleseding ya tse Fihletswe Pele e fumanwang mmoho le ena (Background Information Document (BID)) bakeng sa tlhisoleseding e eketsehileng ka projeke ena. Dikgatiso tsa Seafrikanse le Sesotho tsa BID di fumanwa ho websaete ya rona (<http://www.shango.co.za/public-documents/>).

Ho lebeletswe hore mesebetsi o latelang wa NEMA o lethathameng le tlasa Tsebisu ya Lethathama la 1 le 3 la NEMA la 2014 la Melawana ya Tekolo ya Sekgahla hodima Tikoloho (Environmental Impact Assessment (EIA)) (jwalo ka ha e fetofetotswe) e tla tsosoliswa ke kopo ena:

- **GN ya 327 (ya 2017), Mosebetsi wa 20:** Mosebetsi ofe kapa ofe ho kenyeleditswe phethahatso ya mosebetsi oo o hlokang tokelo ya ho batla diminerale ho latela Karolo ya 16 ya Molao wa Ntshetsopele ya Diminerale le Mehlodi ya Petroliamo wa 2002, (Molao wa 28 wa 2002), ho kenyeleditswe (a) marangrang a amanang, meaho le ditshebetso tsa mobu, tse amanang ka kotloloho le ho batla diminerale kapa (b) tshebetso ya mantlha ya mehlodi ya diminerale, ho kenya, ho olosa, ho ntsha, ho hlophisa, ho hokola, ho thuwa, ho arola dithollo tsa diminerale kapa ho hlatswa; empa ho sa kenyeletswa tshebetso ya bobedi ya mehlodi ya diminerale, ho kenyeleditswe ho qhibidisa, ho matlafatsa methale, phokotso, ho ntlafatsa, ho fokotsa moya ka hare ho methale, kapa ho fetolela mehlodi ya diminerale gaseng.
- **GN ya 324 (ya 2017), Mosebetsi wa 12(b):** Ho hlekwa ha sebaka sa disekweremithara tse 300 kapa ho feta tsa dimela tsa matswallwa ntle le moo ho hlokalang ho hlekwa ha dimela tsa matswallwa bakeng sa sepheo sa ho lokisa ho entsweng ho latela moralo wa taolo ya ho lokisa (i) mahareng a dibupuwa tse kotsing tse letotong la karolo ya 52 la NEMA kapa pele hophatlalatso ya letoto le jwalo, mahareng a sebaka se hlwauweng se le kotsing e mahlonoko ho Tekolo ya National Spatial Biodiversity ya 2004 le (ii) mahareng a dibaka tsa biodiversity tse hlwauweng meralong ya bioregional.

Kopo ya Tokelo ya ho Batla Diminerale le tshebetso ya Tumello ya Tikoloho di tla etswa jwalo ka ha di hlahositswe Karolong ya 16 ya MPRDA le Kgaolong ya 4 ya Melawana ya EIA ya 2014 (jwalo ka ha e ntile ya fetofetolwa) (GN 326) e phatlaladitswe tlasa NEMA. Tsebiso ya setjhaba le ho ba le seabo ho etswa e le karolo ya tshebetso ya Tekolo ya Motheo.

Tsebiso e etswa ho latela temana ya 16 ya ya MPRDA le Kgaolo ya 6 ya GN 326 ya NEMA, e kopang hore White Rivers Exploration e tsebise ka ho ngola le ho iteanya le monga nmobu wa molao kapa mdudi wa molao le motho ofe kapa ofe ya amehang. Diphetho tsa ho iteanya di tla kenyeletswa ka hare ho thomello ya BAR e le hore DMR e ahlole kopo.

Bathahaselli le Baamehi (I&APs) bafuwa nako ya matsatsia a 30 ho ngodisa maikutlo hodima mosebetsi o lohothilweng le kopo. Haeba o rata ho ngodisa jwalo ka Mothahaselli le Moamehi (I&AP) bakeng sa projeke ena le ho romela maikutlo, dingongoreho kapa dikganyetso tseo o ka bang le tsona tse mabapi le projeke, ka kopo romela lebitso la hao, dintlha tsa boitenayo, mabaka bakeng sa thahasello le ditaba/dingongoreho, ka ho ngola kapa ka mohala, ho Shango Solutions, **pele ho la 31 Phato 2018**. Ka kopo kenya nomoro ya lebitso la tshupo ya projeke (Vrededorf West Ext Prospecting Right Project) mangolong ohle. Ka kopo ela hloko hore ke feela I&APs ba ngodisitsweng ba tla tsebiswa ka menyetla e ka bang teng bakeng sa ho ba le seabo tshebetsong ena.

Dipotso, maikutlo, kapa dingongoreho dife kapa dife tse mabapi le kopo ena di ka lebiswa ho Shango Solutions:

- Moh: 011 678 6504
- Fekse: 011 678 9731
- Imeili: zizo@shango.co.za
- Lebitso la projeke: Vrededorf West Ext Prospecting Right
- Motho wa boitenayo: Ms Zizo Siwendu (Environmental Assessment Practitioner/EAP)
- Aterese ya poso: P.O. Box 2591, Cresta, 2118, South Africa

Maikutlo kapa dingongoreho dife kapa dife tse mabapi le kopo ena hape di ka lebiswa ho Lefapha la Dihlahiswa tsa Diminerale (mme khopi e romelwe ho Shango Solutions):

- Moh: 057 391 1385
- Fekse: 057 357 6003
- Imeili Nkateko.Mhlari@dmr.gov.za
- Motho wa boitenayo: Ms Nkateko Mhlari
- Nomoro ya tshupo ya DMR : FS 30/5/1/1/3/2/1/10521 EM
- Aterese ya poso: Private Bag X33, Welkom, 9460
- Boikarabelo: Environmental Management Directorate DMR – Free State Regional Office

Ka kopo e ba le bolokolohi ba ho iteanya le motho ya saenneng lengolo lena haeba o na le dipotso kapa dingongoreho dife kapa dife.

Ka ditumediso,



Zizo Siwendu



BACKGROUND INFORMATION DOCUMENT

White Rivers Exploration (Pty) Ltd

Prospecting Right Ref.: FS 30/5/1/1/3/2/1/10521 EM

Prospecting Right and Environmental Authorisation for the
Proposed Vredefort West Extension Prospecting Right Project

Dunrose Trading 186 (PTY) Ltd
T/A Shango Solutions

HHK House
Cnr. Ethel Ave and Ruth Cr.
Northcliff
Gauteng

P. O. Box 2591
Cresta
2118

Phone: +27 11 678 6504
Fax: +27 11 678 9731

E-mail: zizo@shango.co.za
Website: www.shango.co.za



White Rivers
Exploration

July 2018

PURPOSE OF THIS DOCUMENT

- This Background Information Document (BID) provides you, as an Interested and Affected Party (I&AP), with an overview of the proposed project.
- The BID invites you, as an I&AP, to participate in the required Public Participation Process (PPP).
- The BID provides you, as an I&AP, with an opportunity to contribute and participate in the formulation of the Basic Assessment Report (BAR) and Environmental Management Programme Report (EMPR).
- The BID also provides you, as an I&AP, an opportunity to provide the project team with your comments, concerns and objections to the proposed project.

1. INTRODUCTION

White Rivers Exploration (Pty) Ltd (White Rivers Exploration) submitted an application for a Prospecting Right and an Environmental Authorisation in order to prospect for the following commodities:

- Silver
- Gold
- Coal
- Cobalt
- Copper
- Diamond (Alluvial)
- Iron
- Manganese
- Molybdenum
- Nickel
- Lead
- Platinum Group Metals
- Rare Earths
- Sulphur
- Uranium
- Tungsten
- Zinc

The application for the Prospecting Right was accepted by the Department of Mineral Resources (DMR) Free State Regional Office on the 25th June 2018. The proposed project will be known as Vredefort West Extension (Vredefort West Ext) and it will aim to explore and quantify the potential mineral resources. In order to undertake prospecting activities, White Rivers Exploration requires a granted Prospecting Right (PR) in terms of the Mineral and Petroleum Resources Development Act, 2002 (MPRDA, Act 28 of 2002). White Rivers Exploration is also required to obtain an Environmental Authorisation (EA) in terms of the National Environmental Management Act, 1998 (NEMA, Act 107 of 1998) which involves the submission of a Basic Assessment Report (BAR) and Environmental Management Programme Report (EMPR) as well as undertaking the Public Participation Process (PPP). Shango Solutions have been appointed by White Rivers Exploration as the Environmental Assessment Practitioner (EAP) to assist in complying with these requirements.

2. AIM OF THE BID

Public Participation forms an integral part of the Basic Assessment process. The BID offers the reader the opportunity to obtain information, comment, raise issues of concern and collaborate in the development of the process. The distribution of this document is a crucial step in advising the reader on how to become involved in the process.

This document aims to provide the reader with basic information regarding the proposed project which includes:

- An introduction of the project, including location details.
- An indication of the proposed activities and the legal framework in which the project is executed.
- An overview of the environmental baseline information and environmental impacts that may potentially occur.
- An explanation of the Public Participation Process (PPP) to be followed.
- An explanation of how to get involved as an Interested and Affected Party (I&AP).

3. LOCALITY

Table 1 indicates the property details of the Prospecting Right application area. The area of interest occupies a total of approximately 18 623.73 hectares (ha) over 90 farm portions and it is situated within the Vredefort Magisterial District approximately 20.3 kilometres (km) west of Parys, in the Free State Province of South Africa (Figure 1).

Table 1: Property details.

Farm Name	Portion	SG Code
Aberdeen B 974	0	F0380000000097400000
Aprilskraal 217	0(RE)	F03800000000021700000
Augustus Kraal 218	0	F03800000000021800000
Baltespoort 998	0(RE)	F03800000000099800000
Bellary 724	0	F03800000000072400000
Bloemfontein 7	0(RE)	F03800000000000700000
Bloemfontein 7	1	F03800000000000700001
Brakdam 494	RE	F03800000000049400000
Brakdam 494	1	F03800000000049400001
Bren 1031	0	F03800000000103100000
Cecilia 134	0(RE)	F03800000000013400000
Cecilia 134	1	F03800000000013400001
Cyferkuil 634	0	F03800000000063400000
Damplaats 626	0	F03800000000062600000
De Put 289	0(RE)	F03800000000028900000
De Wet Rust 230	0(RE)	F03800000000023000000
De Wet Rust 230	1	F03800000000023000001
De Wet Rust 230	2	F03800000000023000002
Dora 492	0	F03800000000049200000
Eendekuil 1057	0(RE)	F03800000000105700000
Eendekuil 1057	1	F03800000000105700001
Engels Kuil 30	0	F03800000000003000000
Freda 1108	0	F03800000000110800000
Geluksvlei 605	0	F03800000000060500000
Goedgedacht 504	0	F03800000000050400000
Goudini 742	0	F03800000000074200000
Goudrif 1218	0	F03800000000121800000
Hercules 800	0(RE)	F03800000000080000000
Hercules 800	1	F03800000000080000001
Hercules 800	4	F03800000000080000004
Hercules 800	6	F03800000000080000006
Jacoba`s Rust 747	0	F03800000000074700000
Kinderbewys A 1044	0	F03800000000104400000
Kinderbewys B 1045	0	F03800000000104500000
Kingsley 622	0(RE)	F03800000000062200000
Klipheuvel 739	0	F03800000000073900000
Knapdaar 619	0	F03800000000061900000
Kroonvlei 766	0	F03800000000076600000
Leeuwdoorns 350	0(RE)	F03800000000035000000
Leeuwdoorns 350	1	F03800000000035000001
Leeuwdoorns 350	2	F03800000000035000002
Leeuwdoorns 350	3	F03800000000035000003
Leeuwdoorns 350	4	F03800000000035000004
Leeuwdoorns 350	5	F03800000000035000005
Leeuwdoorns 1215	0	F03800000000121500000
Lindekwees-Fontein 73	0(RE)	F03800000000073000000

Farm Name	Portion	SG Code
Maria 115	0	F03800000000011500000
Martha`s Wil 797	0	F03800000000079700000
Maugwynheg 1136	0	F03800000000113600000
Mimosa Grove 491	0(RE)	F03800000000049100000
Mimosa Grove 491	1	F03800000000049100001
Mimosa Grove 491	2	F03800000000049100002
Mooihoek 975	0	F03800000000097500000
Mooiplaats A 852	0	F03800000000085200000
Mooiplaats B 853	0	F03800000000085300000
Mooiuitsig 1216	0(RE)	F03800000000121600000
Morgenzon 799	0	F03800000000079900000
Morgenzon 799	2	F03800000000079900002
Morgenzon 799	3	F03800000000079900003
Morgenzon 799	4	F03800000000079900004
Mount Jackson358	0(RE)	F03800000000035800000
Mount Jackson 358	1	F03800000000035800001
Mount Surprise 357	0(RE)	F03800000000035700000
Palestina 635	0	F03800000000063500000
Rhebokfontein 120	0(RE)	F03800000000012000000
Rhebokfontein Wes 1172	0	F03800000000117200000
Rhebokfontein-West 117	0(RE)	F03800000000011700000
Roodewal 119	0(RE)	F03800000000011900000
Skaapplaas 1022	0(RE)	F03800000000102200000
Skaapplaas 1022	1	F03800000000102200001
Skaapplaas 1022	2	F03800000000102200002
Skaapplaas 1022	3	F03800000000102200003
Smaldeel 493	0	F03800000000049300000
Smaragd 1173	0	F03800000000117300000
Stillehoogte 744	0	F03800000000074400000
Tevreden 374	0	F03800000000037400000
Turfhoek 798	0	F03800000000079800000
Uitkyk 1027	0(RE)	F03800000000102700000
Uitkyk 1027	1	F03800000000102700001
Uitkyk 1027	2	F03800000000102700002
Uitkyk 1027	3	F03800000000102700003
Uitsoek 1011	0	F03800000000101100000
Verheugd 851	0(RE)	F03800000000085100000
Verheugd 851	3	F03800000000085100003
Verheugd 851	4	F03800000000085100004
Vlakkuil 152	0(RE)	F03800000000015200000
Voordeel 1067	0	F03800000000106700000
Vrugbaar 1107	0	F03800000000110700000
Windhuk 630	0(RE)	F03800000000063000000
Witterand 103	0(RE)	F03800000000010300000

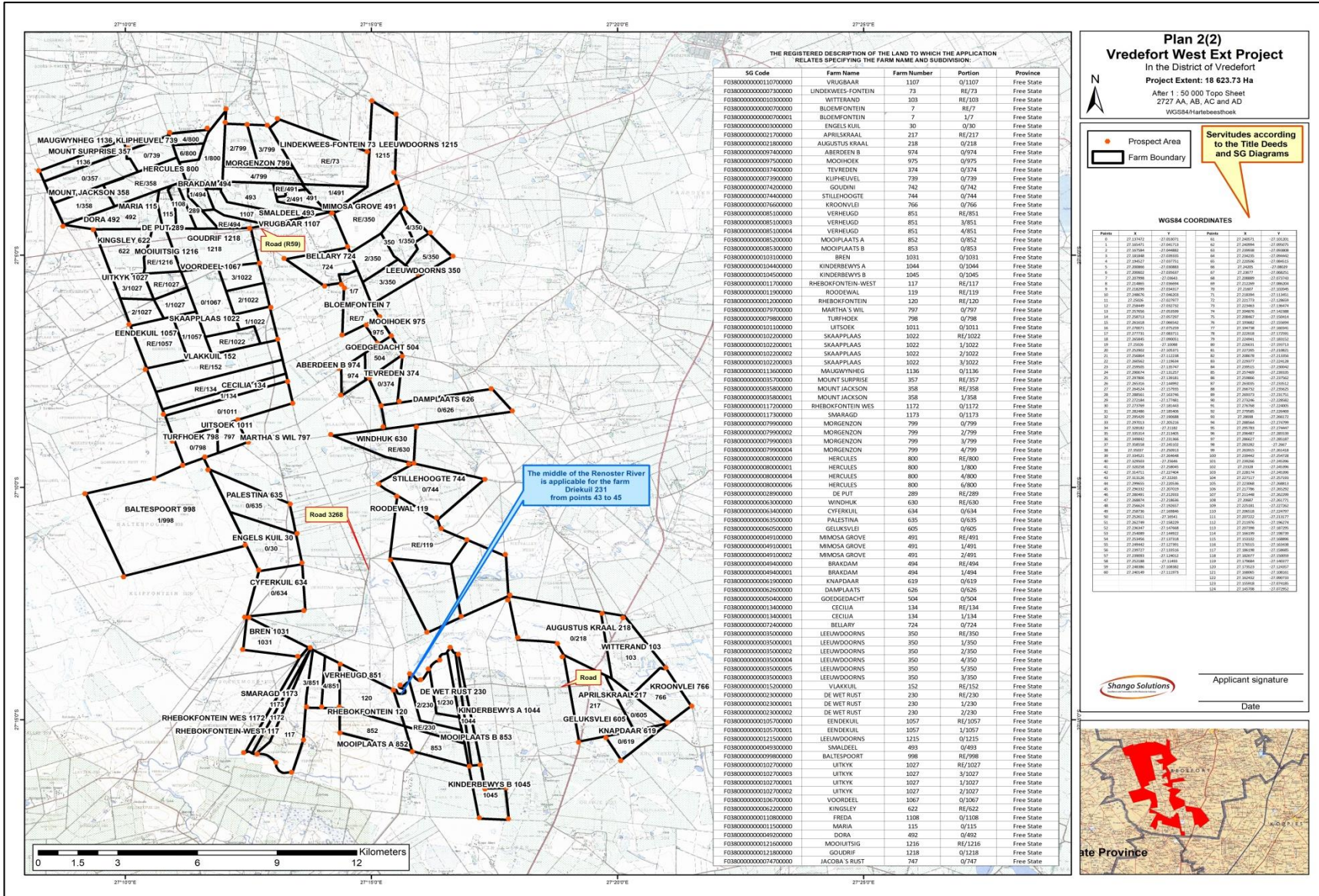


Figure 1: Locality map.

4. PROJECT DESCRIPTION

Invasive and non-invasive prospecting activities will be undertaken as part of the proposed Prospecting Work Programme. The scope of these activities is as follows:

Year 1

1.1. Investigate all Sources for Historical Data [Year 1: 6 months]

Prospecting for gold in the Free State area started in the 1930's resulting in nearly 90 years' worth of exploration in the area. Hence, there exists a significant amount of historical exploration data in the Free State and over the project area. Obtaining and analysing this historical data will allow the fast tracking of prospecting activities.

1.2 Obtain all Relevant Historical Data [Year 1: 3 months]

Historical data detailing the position and economic potential of the target horizons will be identified for potential acquisition. The data obtained is anticipated to be in the form of historical borehole information, cadastral maps, geological maps, geophysical surveys (including existing published gravimetric, radiometric, magnetic, seismic and remote sensing data), as well as any information pertaining to previous exploration or mining will be consulted and integrated. The data will be scrutinised and verified (QA/QC procedure).

1.3 Desktop Study [Year 1: 3 months]

A desktop study will be performed utilising all the data and historical reports obtained during Step 1.2.

1.4 Field Visit [Year 1: 1 week]

A field visit will be undertaken to familiarise the applicant with surface features (such as infrastructure, outcrops, water bodies and wetlands) in the project area and to meet the surface landowners. During this visit farm boundaries within the project area and farming activities will be verified. An effort will be made to identify any factors that may impact the exploration programme.

Year 2:

2.1 Data Synthesis and Generation of Initial Geological Model [Year 2: 6 months]

The above data will be compiled into a geological database, which will be utilised to present the relevant data in useable Geographic Information System (GIS) digital map format. The different data sets will be plotted on a base map of the project and surrounding areas in order to develop a geological model. This model will be used to further refine the exploration programme for the target area.

2.2 Ground Magnetic and Aeromagnetic Survey [Year 2: 6 months]

Regional aeromagnetic surveys are available and will be acquired and interpreted in conjunction with the borehole and other data during Year 1. Based on a favourable outcome of the work from Year 1, the decision will be taken to follow up with ground magnetic and localised aeromagnetic surveys.

Year 3:

3.1 Location of Key Historical Drillhole Core, if Available [Year 3: 3 months]

Based on the initial geological model, specific key drillholes previously drilled in the area will be identified and negotiations with the owners undertaken to obtain access to the core.

3.2 Re-logging and Re-sampling of Historical Drillholes [Year 3: 3 months]

Once access to the historical core is obtained, the core will be re-logged and, if necessary, re-sampled. This activity will allow verification of the historical borehole logs and consequently increase confidence in the data underpinning the geological model.

3.3 Surface Mapping and Sampling

[Year 3: 6 months]

In order to obtain familiarity with the nature and distribution of the different lithologies in the area of interest, geological mapping will be conducted. The aim is to gain a thorough understanding of the geology of the area of interest. Relationships between known geological entities such as Transvaal and Ventersdorp supergroups and underlying Witwatersrand Supergroup rocks will be examined to assist in defining the positions for the trenches.

In addition to mapping, samples will be collected and submitted for analysis. If the analytical results are favourable, trenches will be excavated in Year 4.

Year 4:

4.1 Trenching

[Year 4: 6 months]

Two trenches are proposed for this phase of prospecting as the reefs are steeply dipping. Each trench will be excavated to a length of 10 m, width of 1.5 m and a depth of 3 m. The trench will be excavated utilising a bulldozer or a mechanical digger (Figure 2). Reef exposures will be mapped and sampled. The information acquired will be captured into a database and presented in useable GIS digital map formats. This information will then be integrated into the geological model in order to define the orebodies. This activity will be conducted under the direct control of a trained supervisor who will ensure all aspects of Safety and Environmental Management.

4.2 Finalisation of 3D Geological Model

[Year 4: 6 months]

All data acquired (historical data and ground magnetic data) and data obtained from re-logging and re-sampling of historic core, surface mapping and sampling as well as trenching will be integrated into the geological model and prepared for resource estimation purposes.

Year 5:

5.1 Resource estimation

[Year 5: 6 months]

Utilising the geological database together with the sample data a resource estimate will be performed.

5.2 Concept Study

[Year 5: 6 months]

In the case that the exploration activities yield promising results, a concept study will be conducted. During this investigation, resources will be converted to reserves and a conceptual mine plan and schedule shall be established. This will reveal whether the deposit is economically mineable.



Figure 2: Typical excavator utilised for excavation of a trench.

5. GEOLOGICAL FORMATION

The Witwatersrand Supergroup represents a period of major sedimentation within an inland sea which commenced 2 970 million years ago. The lower West Rand Group sediments were deposited within a shallow sea, while the upper Central Rand Group sediments represent terrestrial river deposits. Certain conglomerate layers within the Witwatersrand rocks known as reefs host the world's most prolific accumulation of gold. The Witwatersrand rocks are thought to occur at relatively shallow depths (0-500 m) in the current target area as it occurs on the southwestern portion of the Vredefort Dome.

Reimold and Gibson (1996) describe the Vredefort Dome as a major meteorite impact that struck the Witwatersrand Basin 2 023 million years ago. The impact severely shattered, fractured, and in places, overturned the Witwatersrand strata in the collar of the dome and, during elastic rebound, also exhumed a portion of the granite crust from beneath the basin in the centre of the structure (Wilson and Anhaeusser, 1998). The result is that the central, most deeply buried portion of the Witwatersrand Basin is extremely well exposed in an arcuate belt of steeply dipping to overturned strata that preserves, in addition, Dominion Group, Ventersdorp and Transvaal supergroups.

Pretorius (1986) published a map showing the distribution of Witwatersrand rocks below the Karoo cover rocks (Figure 3).

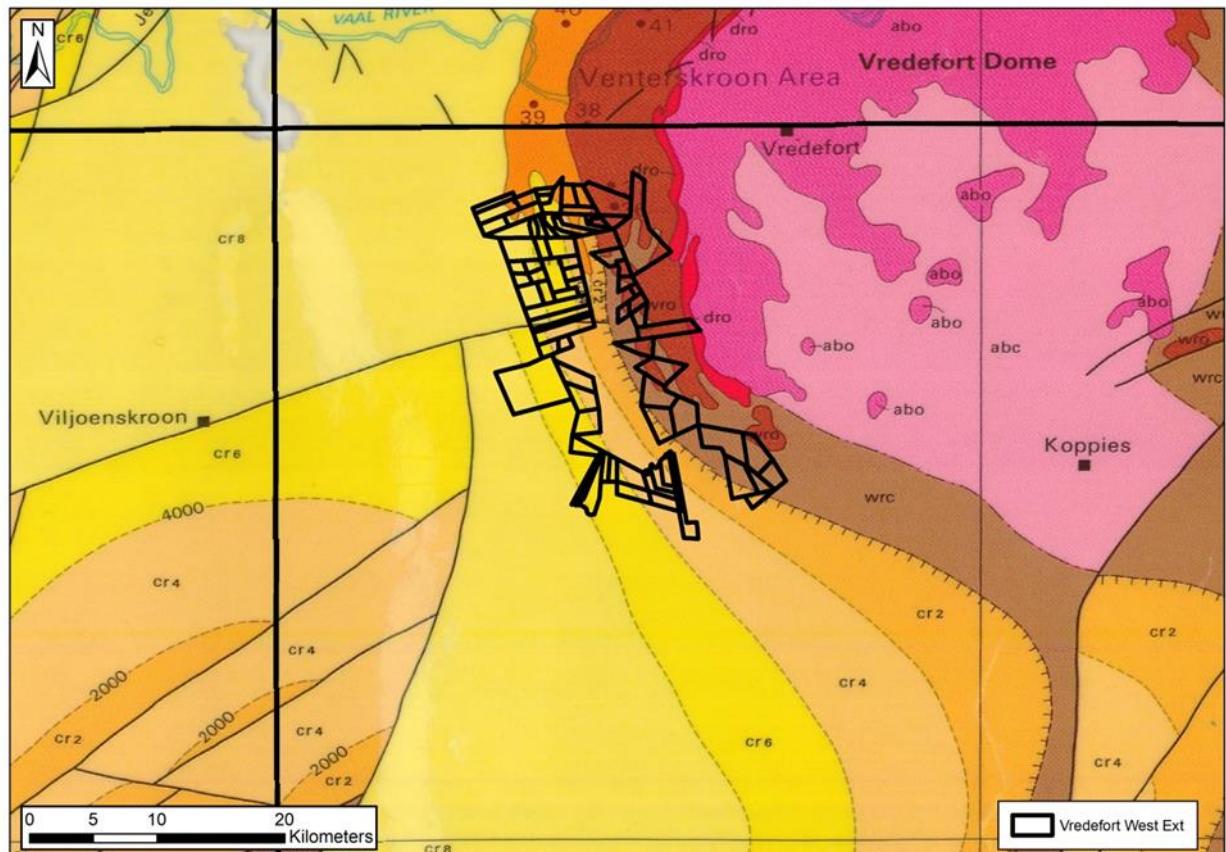


Figure 3: Map of the Witwatersrand Basin (Pretorius, 1964), together with depths to the Central Rand Group.

6. REGULATORY REQUIREMENTS

South African law requires that the Environmental Authorisation be sought for certain activities prior to commencement of prospecting. As part of the application process for Environmental Authorisation it is necessary to assess the environmental and social impacts associated with the activities, so as to identify any potential negative and/or positive consequences as result thereof. Measures must be proposed to avoid or minimise these impacts.

In terms of NEMA and its EIA Regulations (GN 324/GN 325/GN 327) the following listed activity may be applicable to the proposed project, as such the application is subject to a Basic Assessment Report process:

GN 327 (of 2017), Activity 20: Any activity including the operation of that activity which requires a prospecting right in terms of Section 16 of the Mineral and Petroleum Resources Development Act, 2002 (Act 28 of 2002), including (a) associated infrastructure, structures and earthworks, directly related to prospecting of a mineral or (b) the primary processing of a mineral resource including winning, extraction, classifying, concentrating, crushing, screening or washing; but excluding the secondary processing of a mineral resource, including the smelting, beneficiation, reduction, refining, calcining, or gasification of the mineral resource.

GN 324 (of 2017), Activity 12(b): The clearance of an area of 300 square metres or more of indigenous vegetation except where such clearance of such indigenous vegetation is required for maintenance purpose undertaken in accordance with a maintenance management plan (i) within any critically endangered or endangered ecosystem listed in terms of Section 52 of the NEMA or prior to the publication of such a list, within an area that has been identified as critically endangered in the National Spatial Biodiversity Assessment 2004 and (ii) within critical biodiversity areas identified in bioregional plans.

7. TYPICAL IMPACTS ASSOCIATED WITH THESE ACTIVITIES

The following impacts inter alia will be included and assessed in the Basic Assessment Report:

- Safety and security risks to landowners and lawful occupiers
- Interference with land-use
- Sense of place
- Loss/destruction of habitat
- Damage to existing infrastructure
- Perceptions and expectations
- Clearance of vegetation
- Soil instability/compaction/pollution
- Erosion and sedimentation
- Disturbance/damage of heritage features
- Noise
- Introduction of alien species
- Fugitive emission (dust)
- Hydrocarbon spills/contamination
- Surface and groundwater pollution
- Generation and disposal of waste

8. BASIC ASSESSMENT PROCESS

The key steps involved in a typical Basic Assessment process are described below.

Initiation and Application

- Compile and submit application form(s) to DMR

Public Participation Process

- Identification of I&APs
- Preparation of notification documents (BID, letter, advert, site notice, registration form)
- Notification of I&APs and relevant stakeholders of the project
- Placement of site notices and advertisement



We are here

Basic Assessment Report (BAR) and Environmental Management Programme Report (EMPR)

- Compilation of baseline environment data and identification of potential impacts associated with the project
- Assessment of alternative project aspects
- Specialist studies undertaken (if applicable)
- Potential impacts are rated and mitigation measures proposed
- Monitoring programmes proposed to ensure mitigation measures are efficient
- Draft BAR/EMPR is made available to the public and Authorities for public review and comment
- Final BAR/EMPR is updated to include all comments prior to submission to the DMR
- DMR accepts the BAR/EMPR or requests additional information

Record of Decision

- DMR makes a decision and either approves or rejects the application for Environmental Authorisation
- All I&APs are notified of the outcome of the application, and their right to appeal

9. PERIOD FOR WHICH THE ENVIRONMENTAL AUTHORISATION IS REQUIRED

The Environmental Authorisation is required for five (5) years.

10. NEED AND DESIRABILITY OF THE PROJECT

Should prospecting prove successful and a resource is quantified, it would indicate a potential viable economic activity in the form of mining. Mining will contribute greatly to local economic growth through direct employment, future business opportunities, royalties and tax revenues.

11. PUBLIC PARTICIPATION PROCESS

The reader is hereby invited to participate freely and submit any questions or information that may contribute to the Basic Assessment process. Public involvement is an essential component of the process. It addresses the right of I&APs to be informed of the proposed activities and to be involved in decisions that affect them. It also affords the EAP the opportunity to assess and address the issues and concerns raised by I&APs thus allowing the EAP to assess all the potential impacts of the proposed project

12. INVITATION TO REGISTER

Should you wish to register as an I&AP and kept informed regarding this project kindly complete the attached questionnaire and return to Shango Solutions **by no later than 31st August 2018.**

Any queries, comments, or concerns with regards to this application can be directed to Shango Solutions at:

- Tel: 011 678 6504
- Fax: 011 678 9731
- E-mail: zizo@shango.co.za
- Contact person: Ms Zizo Siwendu (Environmental Assessment Practitioner/EAP)
- Project name: Vredefort West Ext Prospecting Right
- Postal address: P.O. Box 2591, Cresta, 2118, South Africa

Any comments or concerns regarding this application can also be directed to the DMR (and a copy sent to Shango Solutions) at:

- Tel: 057 391 1385
- Fax: 057 357 6003
- E-mail: Nkateko.mhlarhi@dmr.gov.za
- Contact person: Ms Nkateko Mhlarhi
- Postal address: Private Bag X33, Welkom, 9460
- DMR reference number: FS 30/5/1/1/3/2/1/10521 EM
- Attention: Mine Environmental Management Directorate DMR – Free State Regional Office

INTERESTED AND AFFECTED PARTY REGISTRATION FORM



VREDEFORT WEST EXT PROSPECTING RIGHT AND ENVIRONMENTAL AUTHORISATION APPLICATION

This form serves to register Interested and Affected Parties (I&APs) for the above-mentioned project and to solicit input and participation. This form will be submitted to the competent authority for consideration in the decision making process.

Name		EAP	Shango Solutions
Address		Contact person	Ms Zizo Siwendu
		Address	P.O Box 2591
			Cresta
			2118
Landowner/Lawful occupier/Organisation		Project	Vredefort West Ext Prospecting Right (FS 30/5/1/1/2/10521 PR)
Tel or Cell no.		Tel no.	011 678 6504
Email		Email	zizo@shango.co.za

Organisation and/or **property description**
(if landowner/ lawful occupier)

Please state your interest in the proposed project (you are welcome to add additional pages if required):

Please assist by completing the questions below. These responses will be utilised to inform the Basic Assessment process. Please submit additional pages if more space is required.

Are you a land owner or legal land occupier within the application area?

Are you aware of any communities which exist within the application area? Please provide detail and possible contact details.

Are you aware of any tribal authorities within, or affected by, the application area? Please provide detail and possible contact details.

Are you aware of any other I&APs who need to be notified? Please provide detail and possible contact details.

Please can you provide us with a description of the receiving environment (including land uses such as farming, grazing etc.; vegetation; topographical features; infrastructure; sensitive flora/fauna)?

Are you aware of any land developments (current or proposed) within the application area that may be relevant to the proposed prospecting operation?

--

Are you aware of any cultural or heritage features within the prospecting area and surrounds, please provide detail?

--

Please describe any bio-physical and/or socio-economic impacts that you believe should be considered during the study.

--

Please describe any measures you believe should be implemented to mitigate, manage, avoid, or remedy the anticipated bio-physical and socio-economic impacts of the proposed activity.

--

Do you have any specific concerns, comments or objections to the proposed project, if so could you please provide us with information?

--

General Comments:

--

Shango Solutions respectfully requests that you please sign this letter and return it to Shango Solutions at the details provided to confirm that you have received notification with regard to the above, and to ensure that your comments, concerns and various inputs are recorded. All comments, queries, and concerns must be received via this I&AP registration form and questionnaire or alternate means. Please note that only registered I&APs will be included in future correspondence regarding this Prospecting Right (PR) Application and associated Environmental Authorisation (EA) process.

Signed.....Name.....Date.....