

SECTION F: APPENDICES

Basic Assessment for the proposed development of a 115 MW Solar Photovoltaic Facility (Vryburg Solar 2) and associated electrical infrastructure near Vryburg in the North West Province: DRAFT BASIC ASSESSMENT REPORT

BASIC ASSESSMENT REPORT

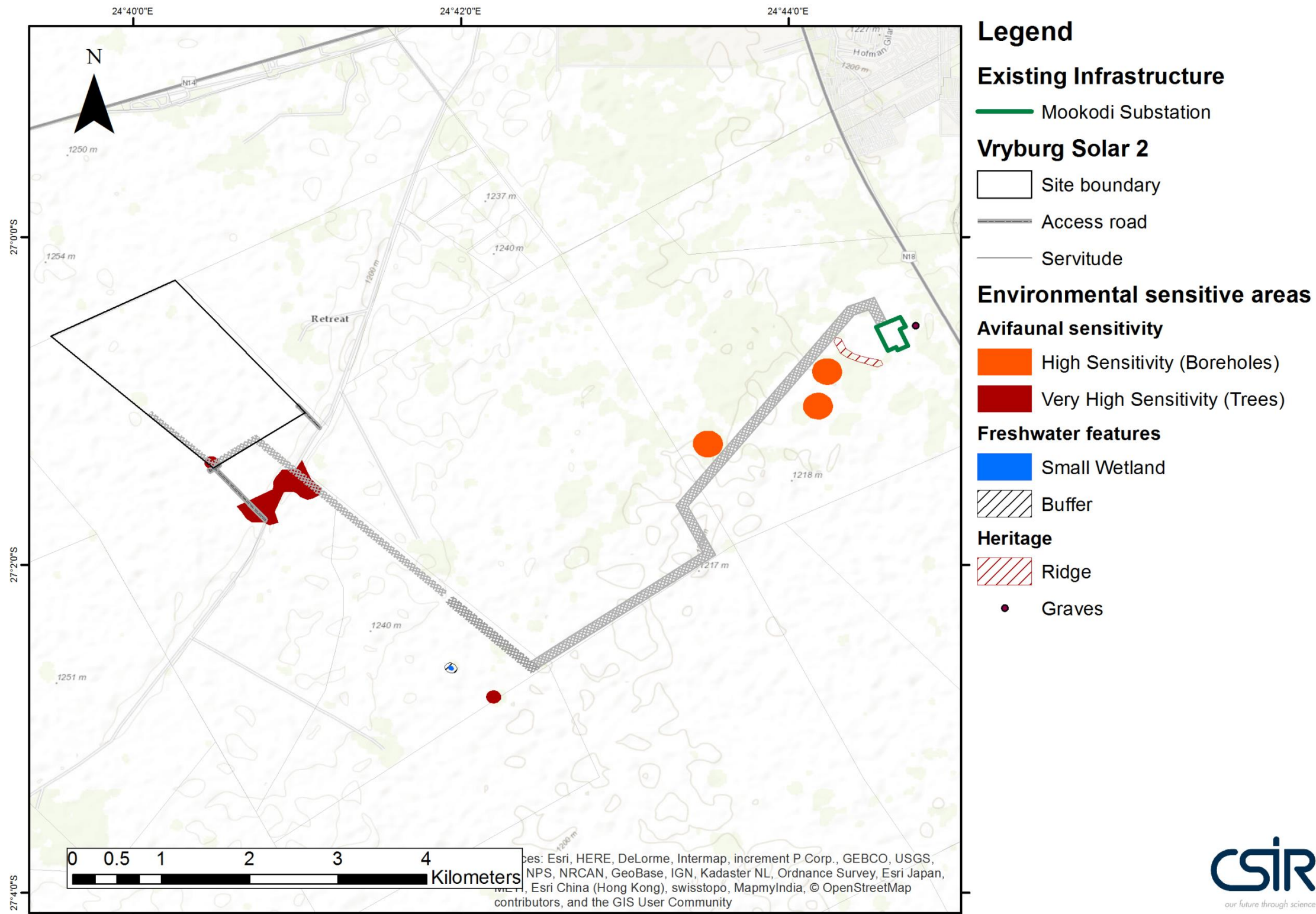
APPENDIX A: MAPS

CONTENTS

Map 1 - Environmental sensitivity map	2
Map 2 - Environmental sensitivity map overlain with preferred layout	3

SECTION F: APPENDICES

Map 1 - Environmental sensitivity map



SECTION F: APPENDICES

Map 2 - Environmental sensitivity map overlain with preferred layout

