



# REHABILITATION PLAN FOR THE WORKING FOR WETLANDS PROGRAMME, MPUMALANGA

## PROJECT: NKOMATI X21F

APRIL 2014



agriculture,  
forestry & fisheries

Department:  
Agriculture, Forestry and Fisheries  
REPUBLIC OF SOUTH AFRICA



EXPANDED PUBLIC WORKS PROGRAMME  
Creating opportunities towards human fulfillment



*This page was left blank intentionally*

**REHABILITATION PLAN FOR THE NKOMATI WETLAND PROJECT, MPUMALANGA:  
PLANNING YEAR 2014**

**AS PART OF  
THE WORKING FOR WETLANDS PROGRAMME  
FOR THE  
SOUTH AFRICAN NATIONAL BIODIVERSITY INSTITUTE**

**MAIN REPORT**

**Final**

**April 2014**

*Prepared by:* Aurecon South Africa (Pty) Ltd  
P O Box 494  
Cape Town  
8000  
South Africa  
Tel: 021 526 6022  
Fax: 021 526 9500  
Email: [franci.gresse@aurecongroup.com](mailto:franci.gresse@aurecongroup.com)

*Prepared for:* Working for Wetlands Programme  
South African National Biodiversity Institute  
Private Bag X101  
Pretoria  
South Africa  
Tel: 012 843 5000  
Fax: 012 804 3211  
Website: [www.sanbi.org](http://www.sanbi.org)

This report is to be referred to in bibliographies as:

South African National Biodiversity Institute, South Africa. 2014. Rehabilitation Plan for the Nkomati Wetland Project, Mpumalanga: Planning Year 2014. Prepared by Margaret Lowies. Aurecon South Africa (Pty) Ltd as part of the planning phase for the Working for Wetlands Rehabilitation Programme. SANBI Report No. 109664/8820a

*This page was left blank intentionally*

## PROJECT DETAILS

---

**TITLE** Rehabilitation Plan for the Nkomati Wetland Project,  
Mpumalanga: Planning Year 2014

**PREPARED BY** Margaret Lowies of Aurecon South Africa (Pty) Ltd (Aurecon)

**CONTRIBUTORS** André Beetge of SANBI  
Cilliers Blaauw of Aurecon  
Anton Linström of Wet-Earth Eco-Specs

**SUBCONSULTANTS** Wet-Earth Eco-Specs

**CLIENT** South African National Biodiversity Institute (SANBI)


**PROJECT NAME** Working for Wetlands Programme


**REPORT STATUS** Final

**REPORT NUMBER** 109664/8820

**SUBMISSION DATE** April 2014

**Prepared for the South African National Biodiversity Institute by:**

pp  (F. GRESSE)  
**M. Lowies**  
Project Staff  
Aurecon SA (Pty) Ltd.

  
**E. Louw**  
Technical Director  
Aurecon SA (Pty) Ltd.

**Approved for the South African National Biodiversity Institute by:**



---

**A. Beetge**  
SANBI Provincial Coordinator: Mpumalanga Province  
South African National Biodiversity Institute  
Planning, Monitoring and Evaluation

*This page was left blank intentionally*

---

## WORKING FOR WETLANDS: CONTEXT DOCUMENT

---

### 1. Introduction

Working for Wetlands (WfWetlands) is a government programme managed by the South African National Biodiversity Institute (SANBI), and is a joint initiative of the Departments of Environmental Affairs (DEA), Water Affairs (DWA) and Agriculture, Forestry and Fisheries (DAFF). In this way the programme is an expression of the overlapping wetland-related mandates of the three parent departments, and besides giving effect to a range of policy objectives, also honours South Africa's commitments under several international agreements, especially the Ramsar Convention on Wetlands.

The programme is mandated to rehabilitate damaged wetlands and to protect pristine wetlands throughout South Africa, with an emphasis on complying with the principles of the Expanded Public Works Programme (EPWP) and using only local Small, Medium and Micro Enterprises (SMMEs). The EPWP seeks to draw significant numbers of unemployed people into the productive sector of the economy, gaining skills while they work and increasing their capacity to earn an income.

### 2. Wetlands and their importance

Once considered valueless wastelands that needed to be drained or converted to more useful land use purposes, wetlands are now seen in an entirely different light. Today wetlands are more commonly perceived as natural assets and natural infrastructure able to provide a range of products, functions and services free of charge.

That which actually constitutes a wetland is often not fully understood. Common misconceptions have been that wetlands must be wet, must have a river running through them, or must always be situated in low-lying areas. The definition of a wetland is much broader and more textured: they are characterised more by soil properties and flora than by an abundance of water.

The National Water Act, No. 36 of 1998 defines a wetland as:

*“land which is transitional between terrestrial and aquatic systems where the water table is usually at or near the surface or the land is periodically covered with water, and which land in normal circumstances supports or would support vegetation typically adapted to life in saturated soil”.*

The Ramsar Convention defines wetlands as:

*“areas of marsh, fen, peatland or water, whether natural or artificial, permanent or temporary, with water that is static or flowing, fresh, brackish or salt, including areas of marine water the depth of which at low tide does not exceed 6m” (Article 1, Ramsar Convention on Wetlands. 1971).*

Wetlands can therefore be seasonal and may experience regular dry spells (sometimes even staying dry for up to several years), or they can be frequently or permanently wet. Wetlands can occur in a variety of locations across the landscape (Plate A), and may even occur at the top of a hill, nowhere near a river. A pan, for example, is a wetland which forms in a depression. Wetlands also come in many sizes; they can be as small as a few square metres (e.g. at a low point along the side of a road) or cover a significant portion of a country (e.g. the Okavango Delta).



**Plate A: A large, seasonal wetland identifiable by the characteristic flora. This wetland contained no surface water at the time of the photograph.**

Wetland ecosystems provide a range of ecological and social services which benefit people, society and the economy at large:

- Wetlands offer services such as water provision, regulation, purification and groundwater replenishment are crucial in addressing objectives of water security and water for food security.
- Wetlands play a critical role in improving the ecological health of an ecosystem by performing many functions that include flood control, water purification, sediment and nutrient retention and export, recharge of groundwater, as well as acting as vital habitats for diverse plant and animal species.
- Wetlands provide ecological infrastructure, replacing the need for municipal infrastructure by providing the same or better benefit at a fraction of the cost.
- Wetlands retard the movement of water in the landscape, which offers the dual benefit of flood control as well as a means of purification. The slow movement of water allows heavier impurities to settle and phreatic vegetation and micro-bacteria the opportunity to remove pollutants and nutrients. For these reasons, artificially created wetlands are often used in newer urban drainage systems to aid both mitigation of flooding and improvement of water quality.
- Wetlands function as valuable open spaces and create recreational opportunities for people that include hiking, fishing, boating, and bird-watching.
- Many wetlands also have cultural and spiritual significance for the communities living nearby. Commercially, products such as reeds and peat are also harvested from wetlands (Plate B).

Wetlands are thus considered to be critically important ecosystems as they provide both direct and indirect benefits to the environment and society.





**Plate B: Commercial products made by locals from reeds harvested from wetlands.**

### 3. Wetland Degradation

It has been estimated that originally over 10% of the Republic of South Africa (RSA) was covered by wetlands; however, this figure decreases significantly every year owing to unsustainable land-use practices. It is estimated that more than 50% of South Africa's wetlands have been destroyed through drainage of wetlands for crops and pastures, poorly managed burning regimes, overgrazing, disturbances to wetland soils, vegetation clearing as well as industrial and urban development (including mining activities).

Although wetlands are high-value ecosystems that make up only a small fraction of the country; they rank among the most threatened ecosystems in South Africa. According to a recent Council of Scientific Research (CSIR) study,<sup>1</sup> South Africa's remaining wetlands were identified as the most threatened of all South Africa's ecosystems, with 48% of wetland ecosystem types being critically endangered, 12% endangered and 5% vulnerable. Only 11% of wetland ecosystem types are well protected, with 71% not protected at all.

The remaining wetland systems suffer from severe erosion and sedimentation, undesirable plant species and aquatic fauna infestations, unsustainable exploitation, artificial drainage and damming, and pollution. The continued degradation of wetlands will impact on biodiversity, ecological function, and the provision of ecosystem services with subsequent impacts on livelihoods and economic activity, as well as health and wellbeing of communities. In the absence of functional wetlands, the carbon cycle, the nutrient cycle and the water cycle would be significantly altered, mostly detrimentally.

Wetland rehabilitation and conservation should be at the heart of water management. It is necessary to prioritise South Africa's remaining wetlands such that those that offer valuable ecosystem services and are least impacted by current pressures or threats are offered immediate attention to avoid further loss, conversion or degradation.

---

<sup>1</sup> Nel J.L. and Driver A. 2012. South African National Biodiversity Assessment 2011: Technical Report. Volume 2: Freshwater Component. CSIR Report Number CSIR/NRE/ECO/IR/2012/0022/A, Council for Scientific and Industrial Research, Stellenbosch.

#### 4. The Working for Wetlands Programme

South Africa is a dry country, but is endowed with exceptionally rich biodiversity. The nation has a pressing reason to value the water-related services that wetlands provide. It is estimated that by 2025, South Africa will be one of fourteen African countries classified as “*subject to water scarcity*” (SANBI Working for Wetlands Strategy 2006-2010). The conservation of wetlands is fundamental to the sustainable management of water quality and quantity, and wetland rehabilitation is therefore essential to conserving water resources in South Africa.

The guiding principles of the National Water Act, No. 36 of 1998, recognise the need to protect water resources. In responding to the challenge of stemming the loss of wetlands and maintaining and enhancing the benefits they provide, government has recognised that, in order to be truly effective, strategies for wetland conservation need to include a combination of proactive measures for maintaining healthy wetlands, together with interventions for rehabilitating those that have been degraded. These objectives are currently being expressed in a coordinated and innovative way through the WfWetlands Programme.

The two main objectives of the WfWetlands Programme are **wetland conservation** in South Africa and **poverty reduction** through **job creation** and **skills development** amongst **vulnerable** and **marginalised** groups.

**Wetland conservation:** The strategic framework of the WfWetlands Programme underlines the need for a more refined planning process at catchment scale. Catchment scale planning seeks to promote ecosystem-scale outcomes, long-term custodianship, and the entrenchment of rehabilitation in broader local institutions and frameworks. The recent move to a systematic wetland rehabilitation planning process has provided a fertile and conducive platform for partnerships to be formed and/or strengthened as the process draws in a much wider stakeholder base.

Wetlands are not easy ecosystems to map at a broad scale as they are numerous, often small and difficult to recognise and delineate on remotely sensed imagery such as satellite photos. The WfWetlands Programme houses the National Wetlands Inventory Project (NWI) which aims to provide clarity on the extent, distribution and condition of South Africa’s wetlands. The project clarifies how many and which rivers and wetlands have to be maintained in a natural condition to sustain economic and social development, while still conserving South Africa’s freshwater biodiversity.

The National Freshwater Ecosystem Priority Areas (NFEPA) has used the NWI data to produce the most comprehensive national wetland map to date, called the NFEPA Atlas. This atlas enables the planning of wetland rehabilitation on a catchment scale.

**Skills development:** In the 12 years since its inception, the WfWetlands Programme has invested R530 million in wetland rehabilitation and has been involved in over 900 wetlands, thereby improving or securing the health of over 70 000 hectares of wetland environment. The WfWetlands Programme currently has a budget of approximately R94 million per year, of which R32 million is allocated directly to paying wages. Being part of the Expanded Public Works Programme (EPWP), the WfWetland Programme has created more than 12 800 jobs and 2.2 million person-days of paid work. The local teams are made up of a minimum of 60% women, 20% youth and 1% disabled persons.

### **Training and Capacity Building during the Working for Wetlands Programme**

The WfWetlands Programme has established a working relationship with the Department of Public Works through the Working for Water programme. This partnership provides accredited training in accordance with the special public works Code of Good Practice agreements. Capacity building in the WfWetlands Programme operates primarily at two levels:

- The first concerns the need to ensure the development of adequate capacity to rehabilitate, manage and conserve wetlands in South Africa.
- The second relates to the commitment of the WfWetlands Programme as an EPWP to provide appropriate training to its workers in order for them to exit the programme with marketable skills and enhanced personal development.

Workers receive two days of training, either vocational or social development-related, for every 22 days worked. Vocational training includes technical matters related to project activities, occupational health and safety, first aid, fire awareness, and business skills (contractor development). Social development includes literacy, primary health, personal finance, HIV/Aids and diversity awareness.

Wage information sourced from the best practice guidelines suggests that workers and contractors would be paid daily rates of R 82 and R 251<sup>2</sup> respectively and would be employed on limited term contracts, i.e. 24 months in a five-year cycle. Employment of workers complies with the Ministerial Determination on Special Public Works Programmes (Government Notice No. R 63, 25 January 2002) and the Code of Good Practice for Employment and Conditions of Work for Special Public Works Programmes (Government Notice No. R 64, 25 January 2002). Targets for employment specify that the programme's workforce should comprise at least 60% women, 20% youth and 2% disabled people.

The WfWetlands Programme engages with provinces, especially government departments and agencies responsible for biodiversity and environment, and municipalities through individual projects. A stronger working relationship with these spheres of government is being promoted through the programme's emphasis on partnerships. In particular, compatibility with Integrated Development Plans and rehabilitation project objectives will be a key area of future focus. The WfWetlands Programme encourages municipalities to participate in provincial wetland forums as these forums are the platform for the roll out of all the programmes' processes, including planning for future work. Provincial forums also offer support from the government departments and private sectors that are represented. Partnerships with non-governmental organizations and the private sector are also critical, requiring collaboration and cooperation with a wider range of stakeholders and role players in the wetland management field.

Other activities that form part of the WfWetlands Programme include:

- Raising awareness of wetlands among workers, landowners and the general public; and
- Providing adult basic education and training, and technical skills transfer (in line with the emphasis of the EPWP on training, the WfWetlands Programme has provided 168 400 days of training in vocation and life skills).

---

<sup>2</sup>without a Supervisor

## 5. Rehabilitation interventions

The successful rehabilitation of a wetland requires that the cause of damage or degradation is addressed, and that the natural flow patterns of the wetland system are re-established (flow is encouraged to disperse rather than to concentrate). Approximately 500 interventions are implemented every year in the WfWetlands Programme. The key purposes of implementing interventions include:

- Restoration of hydrological integrity (e.g. raising the general water table or redistributing the water across the wetland area);
- Recreation of wetland habitat towards the conservation of biodiversity; and
- Job creation and social upliftment.

Typical activities undertaken within the projects include:

- Plugging artificial drainage channels created by development or historical agricultural practices to drain wetland areas for other land use purposes;
- Constructing structures (gabions, berms, weirs) to divert or redistribute water to more natural flow paths, or to prevent erosion by unnatural flow rates that have resulted from unsustainable land use practices or development; and
- Removing invasive alien or undesirable plant species from wetlands and their immediate catchments (in conjunction with the Working for Water initiative).

### Increased labour requirement for the Working for Wetlands Programme

In response to the government request to increase the labour component of all government funded projects, the WfWetlands Programme project team has had to consider, and where practically feasible incorporate, more labour intensive ways of rehabilitating wetlands in order to obtain the increased labour component. Accordingly the project team members have factored this requirement into their planning when designing structures for wetland rehabilitation.

Methods of wetland rehabilitation may include hard engineering interventions such as:

- Earth berms or gabion systems to block artificial channels that drain water from or divert polluted water to the wetland;
- Concrete and gabion weirs to act as settling ponds, to reduce flow velocity or to re-disperse water across former wetland areas thereby re-establishing natural flow paths;
- Earth or gabion structure plugs to raise channel floors and reduce water velocity;
- Concrete or gabion structures to stabilise head-cut or other erosion and prevent gullies; and
- Gabion structures (mattresses, blankets or baskets) to provide a platform for the growth of desired wetland vegetation.

Soft engineering interventions also offer successful rehabilitation methods, and the following are often used together with the hard engineering interventions:

- The re-vegetation of stabilised areas with appropriate wetland and riparian plant species;
- The fencing off of sensitive areas within the wetland to keep grazers out and to allow for the re-establishment of vegetation;
- The use of biodegradable or natural soil retention systems such as eco-logs, plant plugs, grass or hay bales, and brush-packing techniques;
- In some instances, the use of appropriate fire management and burning regimes. The removal of undesirable plant and animal species; and

- Alien invasive plant clearing, which is an important part of wetland rehabilitation (and this is supported by the Working for Water Programme).

## 6. Programme, projects and phases

In order to manage the **WfWetlands Programme**, wetlands have been grouped into “projects”, and each **Wetland Project** encompasses several smaller wetland systems which are each divided into smaller, more manageable and homogenous wetland units. A Wetland Project may be located within one or more quaternary catchments within a Province. SANBI is currently managing 35 Wetland Projects countrywide, and rehabilitation activities range from stabilising degradation to the more ambitious restoration of wetlands to their original conditions.

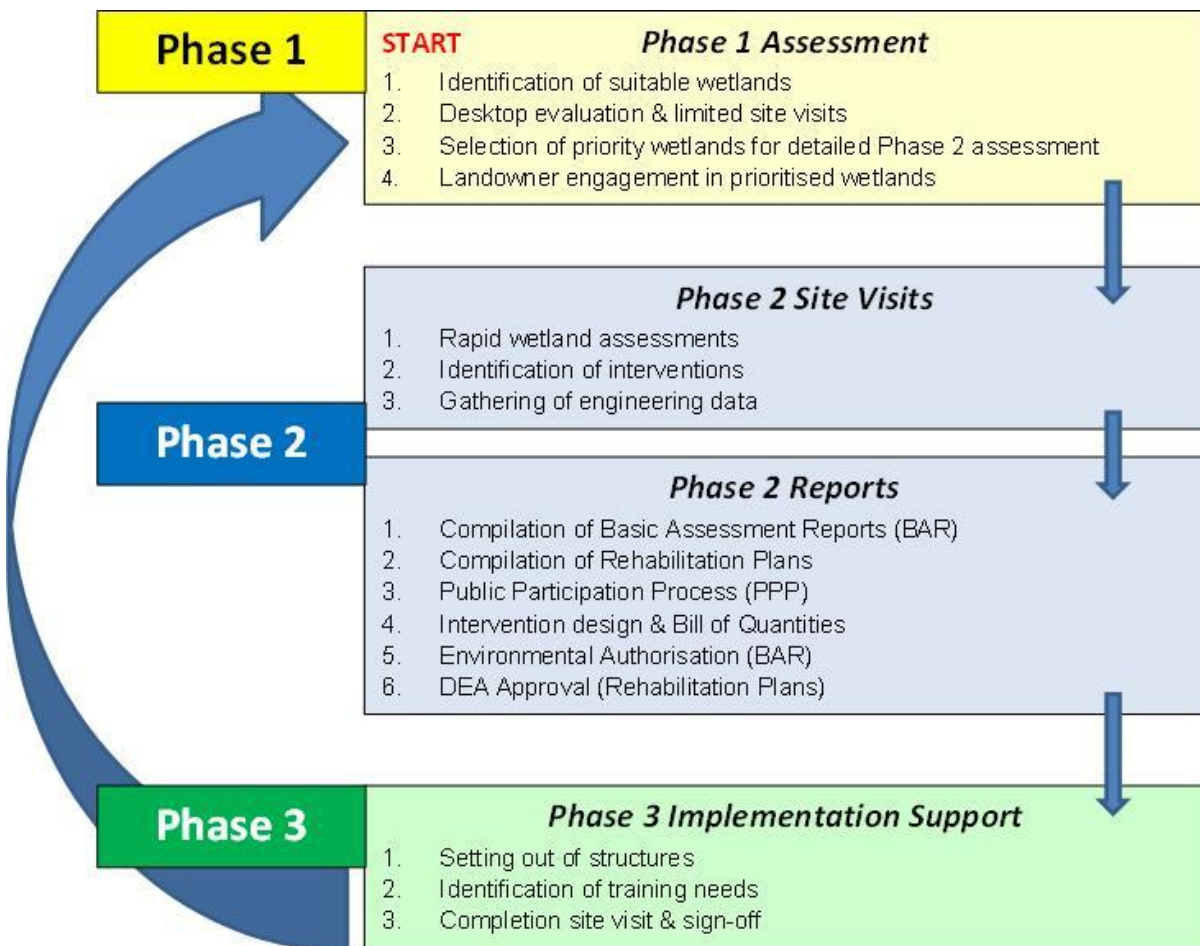
Each Wetland Project is managed in three phases over a two-year cycle as shown in the flow diagram in Plate C. The first two phases straddle the first year of the cycle and involve planning, identification, design and authorisation of interventions. The third phase is implementation, which takes place during the second year.

The first phase is the identification of suitable wetlands which require intervention. The purpose of Phase 1 and the associated reporting is to identify:

- Priority catchments and associated wetlands/ sites within which rehabilitation work needs to be undertaken; and
- Key stakeholders who will provide meaningful input into the planning phases and wetland selection processes, and who will review and comment on the rehabilitation proposals.

The **Project Team** currently comprises the SANBI Programme Manager who oversees the WfWetlands Programme and Provincial Coordinators (PCs) who oversee the identification and implementation of projects in their regions. They are supported by a small team based at the Pretoria Botanical Gardens who fulfil various roles such as planning, monitoring and evaluation, implementation, Geographical Information Systems (GIS) and training. Independent Design Engineers and Environmental Assessment Practitioners (EAPs) are appointed to undertake the planning, design and authorisation components of the project. The project team is assisted by a number of wetland ecologists who provide scientific insight into the operation of wetlands and bring expert and often local knowledge to the project teams.

The programme makes use of external support to implement its work. External implementing agents are currently employed and some are Section 21 companies. Implementers are responsible for employing contractors and their teams (workers), and ensuring that rehabilitation plans are adequately implemented. Funds are transferred from SANBI to the implementing agents, who in turn pay contractors and their teams.



**Plate C: The Working for Wetlands planning process (Phase 1 to Phase 3).**

**Phase 1** commences with a catchment and wetland prioritisation process for every province. The wetland ecologist responsible for a particular province undertakes a desktop study to determine the most suitable wetlands for the WfWetlands rehabilitation efforts. The involvement of Provincial Wetland Forums and other key stakeholders is a critical component of the wetland identification processes since these stakeholders are representative of diverse groups with shared interests (e.g. from government institutions to amateur ecological enthusiasts). This phase also involves initial communication with local land-owners and other Interested and Affected Parties (I&APs) to gauge the social benefits of the work. Aerial surveys of the areas in question may be undertaken, as well as limited fieldwork investigations or site visits to confirm the inclusion of certain wetland projects or units. Once wetlands have been prioritised and agreed on by the various parties, specific rehabilitation objectives are determined for each wetland following a rapid wetland status quo report undertaken by the wetland ecologist.

**Phase 2** requires site visits attended by the fieldwork team comprising a wetland ecologist, a Design Engineer, an Environmental Assessment practitioner, and a SANBI Provincial Coordinator. Other interested stakeholders or authorities, landowners and in some instances the implementing agents may also attend the site visits on some occasions. This allows for a highly collaborative approach, as options are discussed by experts from different scientific disciplines, as well as local inhabitants with deep anecdotal knowledge. While on site, rehabilitation opportunities are investigated. The details of the proposed interventions are discussed, some survey work is undertaken by the engineers, and

GPS coordinates and digital photographs are taken for record purposes. Furthermore, appropriate dimensions of the locations are recorded in order to design and calculate quantities for the interventions. At the end of the site visit the rehabilitation objectives together with the location layout of the proposed interventions are agreed upon by the project team.

During Phase 2, monitoring systems are put in place to support the continuous evaluation of the interventions. The systems monitor both the environmental and social benefits of the interventions. As part of the Phase 2 site visit, a maintenance inventory of any existing interventions that are damaged and/or failing and thus requiring maintenance is compiled by the PC, in consultation with the Design Engineer.

Based on certain criteria and data measurements (water volumes, flow rates, and soil types); the availability of materials such as rock; labour intensive targets; maintenance requirements etc., the interventions are then designed. Bills of quantity are calculated for the designs and cost estimates made. Maintenance requirements for existing interventions in the assessed wetlands are similarly detailed and the costs calculated. The Design Engineer also reviews and, if necessary, adjusts any previously planned interventions that are included into the historical Rehabilitation Plans.

Phase 2 also comprises a reporting component where Rehabilitation Plans are prepared for each Wetland Project. The Rehabilitation Plans include details of each intervention to be implemented, preliminary construction drawings and all necessary documentation required by applicable legislation. The Rehabilitation Plans are reviewed by various government departments, stakeholders and the general public before a specific subset of interventions are selected for implementation.

**Phase 3** requires that certain Environmental Authorisations are obtained before work can commence in the wetlands (please see subsequent sections of this document for detail on Environmental Authorisations). Upon approval of the wetland Rehabilitation Plans by DEA, DWA, and the directly affected landowners is obtained, the work detailed for the project will be implemented within a year with on-going monitoring being undertaken thereafter. The Rehabilitation Plans are considered to be the primary working document for the implementation of the project via the construction/ undertaking of interventions<sup>3</sup> listed in the Plan.

It is typically at this point in the process when the final construction drawings are issued to the Implementing Agents (IAs). Seventeen Implementing Agents are currently employed in the WfWetlands Programme and are responsible for employing contractors and their teams (workers) to construct the interventions detailed in each of the Rehabilitation Plans. For all interventions that are based on engineering designs (typically hard engineered interventions), the Design Engineer is required to visit the site before construction commences to ensure that the original design is still appropriate in the dynamic and ever-changing wetland system. The Design Engineer will assist the IAs in pegging and setting-out interventions. The setting-out activities often coincide with the Phase 1 activities for the next planning cycle. Phase 3 concludes with the construction of the interventions, but there is an on-going monitoring and auditing process that ensures the quality of interventions, the rectification of any problems, and the feedback to the design team regarding lessons learnt.

---

<sup>3</sup> This could include soft options such as alien clearing, eco-logs, gabion structures as well as hard structures for example weirs.

### **Rehabilitation work within floodplain systems**

Based on lessons learnt and project team discussions held during the National Prioritisation workshop in November 2010 SANBI took an in-principle decision regarding work within floodplain systems.

Recognising the ecosystem services provided by floodplain wetlands and the extent to which they have been transformed, SANBI do not intend to stop undertaking rehabilitation work in floodplains entirely. Instead, SANBI propose to adopt an approach to the rehabilitation of floodplain areas that takes into account the following guiding principles:

1. As a general rule, avoid constructing hard interventions within an active floodplain channel; and rather
2. Explore rehabilitation opportunities on the floodplain surface using smaller (possibly more) softer engineering options outside of the main channel.

When rehabilitation within a floodplain setting is being contemplated, it will be necessary to allocate additional planning resources, including the necessary specialist expertise towards ensuring an adequate understanding of the system and appropriate design of the interventions.

## **7. Environmental legislation**

One of the core purposes of the WfWetlands Programme is the preservation of South Africa's valuable wetland systems through rehabilitation and restoration. The WfWetlands Programme operates within the context of the Constitution of South Africa, Act No. 108 of 1996, whereby everyone has the right to have the environment protected and conserved for the benefit of present and future generations. The following legislation (listed in Table A) informs and guides the WfWetlands Programme in terms of its vision and objectives, whilst simultaneously regulating the wetland rehabilitation activities which WfWetlands carries out.

South Africa has rigorous and comprehensive environmental legislation aimed at preventing degradation of the environment, including damage to wetland systems. Development proposals within or near any wetland system are subject to thorough bio-physical and socio-economic assessment as mandatory processes of related legislation. These processes are required to prevent degradation of the environment and to ensure sustainable and environmentally conscientious development.

The WfWetlands Programme requires that both hard and soft interventions are implemented in the wetland system, and it is the activities associated with the construction of these interventions that triggers requirements for various authorisations, licenses or permits. However, it is important to note that the very objective of the WfWetlands Programme is to improve both environmental and social circumstances. The WfWetlands Programme gives effect to a range of policy objectives of environmental legislation, and also honours South Africa's commitments under several international agreements, especially the Ramsar Convention on Wetlands.

### **Memorandum of Understanding for Working for Wetlands Programme**

A Memorandum of Understanding (MOU) has been entered into between the DAFF, DEA, DWA and SANBI for the WfWetlands Programme. Through co-operative governance and partnerships, this MOU aims to streamline the authorisation processes required by the National Environmental Management Act, No. 107 of 1998, the National Water Act, No. 36 of 1998, and the National Heritage Resources Act, No. 25 of 1999 to facilitate efficient processing of applications for authorisation of wetland rehabilitation activities.



**Table A: List of applicable legislation**

<b>Title of legislation, policy or guideline:</b>	<b>Administering authority:</b>	<b>Date:</b>
The Constitution of South Africa, Act No.108 of 1996	National Government	1996
National Environmental Management Act, No.107 of 1998	Department of Environmental Affairs	1998
The National Water Act, No. 36 of 1998	Department of Water Affairs	1998
Conservation of Agricultural Resources Act, No. 43 of 1983	Department of Agriculture, Forestry & Fisheries	1983
National Heritage Resources Act, No. 25 of 1999	National Heritage Resources Agency	1999
World Heritage Conventions Act, No. 49 of 1999	Department of Environmental Affairs	1999
The National Environmental Management: Biodiversity Act, No. 10 of 2004	Department of Environmental Affairs	2004
National Environmental Management: Protected Areas Act, No. 57 of 2003	Department of Environmental Affairs	2003
The Mountain Catchments Areas Act, No. 63 of 1970	Department of Water Affairs	1970
<ul style="list-style-type: none"> <li>• EIA Guideline Series, in particular:</li> <li>• Guideline 3 – General Guide to the Environmental Impact Assessment Regulations, 2006 (DEAT 2006)</li> <li>• Guideline 4 – Public Participation in support of the EIA regulations, 2006 (DEAT 2006)</li> <li>• Guideline 5 – Assessment of Alternatives and Impacts, 2006 (DEAT 2006)</li> <li>• Implementation Guidelines: Sector Guidelines for the EIA Regulations (draft) (DEA, 2010).</li> <li>• DEA&amp;DP. 2013. Guideline on Public Participation (DEA&amp;DP, March 2013).</li> <li>• DEA&amp;DP. 2013. Guideline on Alternatives (DEA&amp;DP, March 2013).</li> </ul>	Department of Environmental Affairs	2006 - 2013
International Conventions, in particular: <ul style="list-style-type: none"> <li>• The Ramsar Convention</li> <li>• Convention on Biological Diversity</li> <li>• United Nations Conventions to Combat Desertification</li> <li>• New Partnership for Africa's Development (NEPAD)</li> <li>• The World Summit on Sustainable Development (WSSD)</li> </ul>	International Conventions	N/A

Of particular relevance in Table A is the following legislation and the WfWetlands Programme has put systems in place to achieve compliance:

- **The National Environmental Management Act, No. 107 of 1998 (NEMA)**
  - In terms of Regulations pursuant to the NEMA, certain activities that may have a detrimental impact on the environment (termed Listed Activities) require an Environmental Authorisation from the Department of Environmental Affairs (DEA). The implementation of interventions will trigger NEMA Listing Notices 1 and 3 (G.N. R544 and G.N R546

respectively). In order to meet the requirements of these Regulations, it is necessary to undertake a Basic Assessment Process and apply for an EA. This was previously undertaken on an annual basis per Province as the Wetland Projects became known. However as from 2014, an application is now made per Province for Wetland Projects required in the next few planning cycles (anywhere from one to three planning cycles depending on the information gained through the Catchment Prioritisation Process).

- **Basic Assessment Reports** (BARs) will be prepared for each Province where work is proposed by the WfWetlands Programme. These BARs will present all Wetland Projects that are proposed in a particular province, together with information regarding the quaternary catchments and the wetlands that have been prioritised for the next few planning cycles (anywhere from one to three planning cycles depending on the information gained through the Catchment Prioritisation Process). The EA's will be inclusive of all Listed Activities that may be triggered and will essentially authorise any typical wetland rehabilitation activities required during the WfWetlands Programme implementation phase.
- A condition of the EA's is that **Rehabilitation Plans** will be prepared every year after sufficient field work has been undertaken in the wetlands that have an EA. These Rehabilitation Plans will be made available to registered Interested and Affected Parties (I&APs) before being submitted to DEA for approval. The Rehabilitation Plans will describe the combination and number of interventions selected to meet the rehabilitation objectives for each Wetland Project, as well as an indication of the approximate location and approximate dimensions (including footprint) of each intervention.
- **The National Water Act, No.36 of 1998 (NWA)**
  - In terms of Section 39 of the NWA, a General authorisation<sup>4</sup> (GA) has been granted for certain activities that are listed under the NWA that usually require a Water Use License; as long as these activities are undertaken for wetland rehabilitation. These activities include '*impeding or diverting the flow of water in a watercourse*'<sup>5</sup> and '*altering the bed, banks, course or characteristics of a watercourse*'<sup>6</sup> where they are specifically undertaken for the purposes of rehabilitating<sup>7</sup> a wetland for conservation purposes. SANBI are required to register the 'water use' in terms of the GA.
- **The National Heritage Resources Act, No. 25 of 1999 (NHRA)**
  - In terms of Section 38 of the NHRA; any person who intends to undertake a development as categorised in the NHRA must at the very earliest stages of initiating the development notify the responsible heritage resources authority, namely the South African Heritage Resources Agency (SAHRA) or the relevant provincial heritage agency. These agencies would in turn indicate whether or not a full Heritage Impact Assessment (HIA) would need to be undertaken. Should a permit be required for the damaging or removal of specific heritage resources, a separate application will be submitted to SAHRA or the relevant provincial heritage agency for the approval of such an activity. SANBI has engaged with SAHRA regarding the wetland planning process and has committed to achieving full compliance with the heritage act over the next few years.

---

<sup>4</sup>Government Notice No. 1198, 18 December 2009

<sup>5</sup>Section 21(c) of the NWA, No. 36 of 1998

<sup>6</sup>Section 21(i) of the NWA, No. 36 of 1998

<sup>7</sup>Defined in the NWA as "*the process of reinstating natural ecological driving forces within part of the whole of a degraded watercourse to recover former or desired ecosystem structure, function, biotic composition and associated ecosystem services*"

## Table of Contents

I.	CONTEXT OF THE INFORMATION CONTAINED IN THIS REHABILITATION PLAN .....	XVI
II.	CONTACT DETAILS .....	XVII
III.	ABBREVIATIONS .....	XVIII
IV.	GLOSSARY OF TERMS .....	XIX
V.	ASSUMPTIONS AND LIMITATIONS .....	XXI
VI.	GAPS IN KNOWLEDGE .....	XXII
VII.	DISCLAIMER .....	XXII
VIII.	DISTRIBUTION LIST .....	XXIV
<b>1</b>	<b>INTRODUCTION.....</b>	<b>1</b>
1.1	WORKING FOR WETLANDS PROGRAMME OVERVIEW.....	1
1.1.1	<i>Programme, projects and phases</i> .....	1
1.1.2	<i>Methods of rehabilitation</i> .....	2
1.1.3	<i>Intervention options</i> .....	2
1.2	PROJECT TEAM.....	3
1.3	MPUMALANGA WETLAND PROJECTS .....	3
1.3.1	<i>The Nkomati Wetland Project</i> .....	4
1.4	PROJECT SCOPE .....	4
<b>2</b>	<b>GENERAL METHODOLOGY .....</b>	<b>7</b>
2.1	LANDOWNER CONSENT .....	7
2.2	PHASE 1 .....	7
2.3	PHASE 2 .....	9
2.3.1	<i>Site visits</i> .....	9
2.3.2	<i>Wetland Status Quo Reports</i> .....	9
2.3.3	<i>Identification and location of intervention designs</i> .....	10
2.3.4	<i>Collection of Monitoring &amp; Evaluation Baseline and Basic Assessments Data</i> .....	12
2.3.5	<i>Engineering design</i> .....	12
2.3.6	<i>Development of the Rehabilitation Plan</i> .....	13
<b>3</b>	<b>PROJECT DESCRIPTION .....</b>	<b>15</b>
3.1	PROJECT DETAILS .....	15
3.2	LANDOWNER DETAILS.....	17
3.3	PROJECTED REHABILITATION INDICATORS .....	17
3.4	PRIORITISATION OF WETLANDS.....	18
3.5	INTERVENTIONS REQUIRED .....	18
<b>4</b>	<b>HARTEBEESSPRUIT WETLAND –X21F.....</b>	<b>21</b>
4.1	WETLAND DETAILS .....	21
4.2	SITE PHOTOS.....	22
4.3	WETLAND PROBLEMS.....	23
4.4	REHABILITATION OBJECTIVES .....	23
4.5	SUMMARY PROPOSED INTERVENTIONS .....	24
4.6	DESIGN SELECTION AND SIZING .....	26
4.7	INTERVENTION DESIGNS.....	28
4.7.1	<i>Intervention: X21F-01-209-00</i> .....	28
4.7.2	<i>Intervention: X21F-01-210-00</i> .....	31
4.7.3	<i>Intervention: X21F-01-211-00</i> .....	34

4.7.4	<i>Intervention: X21F-01-212-00</i> .....	36
4.7.6	<i>Intervention: X21F-01-213-00</i> .....	39
4.7.7	<i>Intervention: X21F-01-214-00</i> .....	41
4.7.8	<i>Intervention: X21F-01-215-00</i> .....	44
4.7.9	<i>Intervention: X21F-01-216-00</i> .....	47
4.7.10	<i>Intervention: X21F-01-217-00</i> .....	50
4.7.11	<i>Intervention: X21F-01-218-00</i> .....	53
4.7.12	<i>Intervention: X21F-01-219-00</i> .....	56
4.7.13	<i>Intervention: X21F-01-220-00</i> .....	59
4.7.14	<i>Intervention: X21F-01-221-00</i> .....	62
4.7.15	<i>Intervention: X21F-01-222-00</i> .....	65
4.7.16	<i>Intervention: X21F-01-223-00</i> .....	68
4.8	CONSTRUCTION ENVIRONMENTAL MANAGEMENT PLAN ISSUES .....	71
4.9	WETLAND MANAGEMENT RECOMMENDATIONS .....	71
4.10	BASELINE M&E DATA.....	71
4.10.1	<i>Erosion problems</i> .....	71
4.10.2	<i>Fixed point photography</i> .....	71
4.10.3	<i>Baseline WET-Health data</i> .....	71

## Annexures

Appendix A: Wetland Status Quo Report

Appendix B: General Construction Notes

Appendix C: Design Drawings

Appendix D: Environmental Authorisation

Appendix E: Landowner Agreements

Appendix F: Construction Environmental Management Plan

Appendix G: National Stakeholder Database

Appendix H: Provincial Stakeholder Database

## List of Figures

Figure 1:	The three phases that must be undertaken for the successful rehabilitation of wetlands .....	8
Figure 2:	Hierarchy used in the Wetland Rehabilitation Plan.....	14
Figure 3:	Topographic map showing X21F quaternary catchment's locality, cadastral boundaries and access routes .....	16
Figure 4:	Site photos of the Hartebeesspruit wetland .....	23
Figure 5:	Wetland map, X21F with proposed new wetland interventions indicated.....	27
Figure 6:	Intervention site X21F-01-209-00 .....	28
Figure 7:	Intervention site X21F-01-210-00 .....	31
Figure 8:	Intervention site X21F-01-211-00 .....	34

Figure 9: Intervention site X21F-01-212-00 .....	36
Figure 10: Intervention site X21F-01-213-00 .....	39
Figure 11: Intervention site X21F-01-214-00 .....	41
Figure 12: Intervention site X21F-01-215-00 .....	44
Figure 13: Intervention site X21F-01-216-00 .....	47
Figure 14: Intervention site X21F-01-217-00 .....	50
Figure 15: Intervention site X21F-01-218-00 .....	53
Figure 16: Intervention site X21F-01-219-00 .....	56
Figure 17: Intervention site X21F-01-220-00 .....	59
Figure 18: Intervention site X21F-01-221-00 .....	62
Figure 19: Intervention site X21F-01-222-00 .....	65
Figure 20: Intervention site X21F-01-223-00 .....	68

## List of Tables

Table 1: Mpumalanga Wetland Projects .....	3
Table 2: Project Scope .....	4
Table 3: Project details .....	15
Table 4: Identified wetlands within the Nkomati Wetland Project .....	17
Table 5: List of Landowners and SG Key .....	17
Table 6: Projected Values .....	17
Table 7: Summary of the interventions including a cross reference of intervention numbers .....	18
Table 8: Summary of the wetland details .....	22
Table 9: Summary of current interventions, X21F-01 .....	24
Table 10: Summary of proposed new interventions, X21F-01 .....	24

i. CONTEXT OF THE INFORMATION CONTAINED IN THIS REHABILITATION PLAN

**Approach to the NEMA Environmental Process**

The legislation protecting the environment in South Africa was not written with the intention of preventing wetland rehabilitation efforts, but rather at curtailing development in sensitive environments. It is important to remember that the WfWetlands Programme is not a development proposal, and although this programme technically requires authorisations, licenses and permits, such rehabilitation projects were never meant to be sent through legislative processes aimed at preventing negative environmental impact.

In terms of the environmental management principles of the National Environmental Management Act, No. 107 of 1998 (NEMA), certain activities that may have a detrimental impact on the environment (termed Listed Activities) require Environmental Authorisation (EA) from the Department of Environmental Affairs (DEA). The WfWetlands Programme will require that interventions be implemented and/or constructed in the wetland systems to ultimately restore some of the more natural wetland functions that have been lost to unsustainable land use practices or development. The implementation of certain interventions triggers Listing Notices 1 and 3 (G.N. R544 and G.N R546 respectively).

In order to meet the requirements of the Regulations pursuant to NEMA, it was necessary to undertake a Basic Assessment Process. **Basic Assessment Report (BARs)** were prepared and these reports presented all Wetland Projects for each Province, together with information regarding the quaternary catchments and the wetlands that were prioritised for the next few planning cycles (anywhere from one to three planning cycles depending on the information gained through the Catchment Prioritisation Process).

The EA that has been applied for will be inclusive of all Listed Activities that may be triggered whilst implementing the wetland rehabilitation interventions. Essentially this EA would authorise any typical wetland rehabilitation activities on condition that the specific intervention proposals are submitted in a Rehabilitation Plan to DEA for approval.

The **Rehabilitation Plans** for each Wetland Project will be prepared annually after sufficient field work and stakeholder consultation has been undertaken in the wetlands that have an EA. These Rehabilitation Plans will be submitted to DEA for approval as a condition of the EA for the respective Provincial BAR.

## ii. CONTACT DETAILS

Details of the applicant: SANBI	
<b>Contact Person:</b>	Mr Umesh Bahadur
<b>Street Address:</b>	Pretoria National Botanical Garden, 2 Cussonia Ave, Brummeria, Pretoria, 0001
<b>Postal Address:</b>	Private Bag X101, Pretoria 0001
<b>Tel:</b>	012-843 5200
<b>Fax:</b>	086-555 9838
<b>Email:</b>	<a href="mailto:u.bahadur@sanbi.org.za">u.bahadur@sanbi.org.za</a>

Details of the EAP: Aurecon	
<b>Contact Person:</b>	Ms Margaret Lowies
<b>Street Address:</b>	Lion Roars Office Park, Cnr. Heugh and 3 <sup>rd</sup> Avenue, Walmer, Port Elizabeth
<b>Postal Address:</b>	PO Box 5328, Walmer, Port Elizabeth, 6065
<b>Tel:</b>	041 503 3900 (Ms Lowies)
<b>Fax:</b>	086 600 4037
<b>Email:</b>	<a href="mailto:Margaret.Lowies@aurecongroup.com">Margaret.Lowies@aurecongroup.com</a>

Details of the Provincial Coordinator: SANBI	
<b>Contact Person:</b>	Mr André Beetge
<b>Postal Address:</b>	PO Box 722, Kranspoort, 1080
<b>Tel:</b>	013 262 8140
<b>Fax:</b>	013 262 8140
<b>Email:</b>	<a href="mailto:a.beetge@sanbi.org.za">a.beetge@sanbi.org.za</a>

### iii. ABBREVIATIONS

BAR	Basic Assessment Report
BID	Background Information Document
BMP	Best Management Practise
CARA	Conservation of Agricultural Resources Act
CEMP	Construction phase Environmental Management Programme
DAFF	Department of Agriculture, Forestry and Fisheries
DEA	Department of Environmental Affairs
DWA	Department of Water Affairs
EAP	Environmental Assessment Practitioner
EIA	Environmental Impact Assessment
EMP	Environmental Management Programme
EPWP	Expanded Public Works Programme
GA	General authorisation in terms of the NWA
IA	Implementing Agent
I&APs	Interested and Affected Parties
IDP	Integrated Development Plans
NHRA	National Heritage Resources Act
NEMA	National Environmental Management Act
NEM: BA	National Environmental Management Biodiversity Act
NEM: PAA	National Environmental Management Protected Areas Act
NFA	National Forests Act
NWA	National Water Act
OHSA	Occupational Health and Safety Act
PC	Provincial Coordinator
PIP	Project Implementation Plan
RHP	River Health Programme
SANBI	South African National Biodiversity Institute
SANParks	South African National Parks
SDF	Spatial Development Framework
SPWP	Special Public Works Programme



#### iv. GLOSSARY OF TERMS

**Auger:** An instrument used for boring or perforating soils or rocks, in order to determine the quality of soil, or the nature of the rocks or strata upon which they lie, and for obtaining water (Wetland Management Series: WET-Origins, WRC Report TT 334/08, March 2008).

**Avulsion:** An abrupt change in the course of a stream from one flow path to another.

**Bedload:** Sediment that is transported by being rolled or bounced along the bed of the stream (Wetland Management Series: WET-Origins, WRC Report TT 334/08, March 2008).

**Bedrock:** The solid rock that underlies unconsolidated material, such as soil, sand, clay, or gravel (Wetland Management Series: WET-Origins, WRC Report TT 334/08, March 2008).

**BAR:** A report as described in regulation 23 of the EIA regulation, 2006 that describes the proposed activities and their potential impacts.

**BID:** A short document describing, and inviting I&APs to comment on, the proposed activities for which authorization is sought.

**BMP:** Procedures and guidelines to ensure the effective and appropriate implementation of wetland rehabilitation by WfWet implementers.

**Biophysical:** The biological and physical components of the environment (Wetland Management Series: WET-Origins, WRC Report TT 334/08, March 2008).

**Catchment:** All the land area from mountaintop to seashore which is drained by a single river and its tributaries. Each catchment in South Africa has been subdivided into secondary catchments, which in turn have been divided into tertiary catchments. Finally, all tertiary catchments have been divided into interconnected quaternary catchments. A total of 1946 quaternary catchments have been identified for South Africa. These subdivided catchments provide the main basis on which catchments are subdivided for integrated catchment planning and management (consult DWA [1994]) (Wetland Management Series: WET-Origins, WRC Report TT 334/08, March 2008).

**Collation Report:** A report describing the Basic Assessment process followed for a provinces and collating the Basic Assessment reports for the various WfWet Projects within a province.

**EAP:** The individual responsible for the planning, management and coordination of the environmental impact assessments, strategic environmental assessments, environmental management plans and/or other appropriate environmental instruments introduced through regulations of NEMA.

**Eco-log:** A cylindrical wire mesh sleeve filled with organic material and/or soil used to prevent and/ or repair minor erosion.

**Ecosystem Services Or 'eco services':** The services such as sediment trapping or water supply, supplied by an ecosystem (in this case a wetland ecosystem).

**EIA:** A study of the environmental consequences of a proposed course of action via the process of collecting, organising, analysing, interpreting and communicating information that is relevant to the consideration of that application.

**MP:** Details the methods and procedures for achieving environmental targets and objectives.

**Gabion:** A structure made of wire mesh baskets filled with regularly sized stones, and used to prevent and/ or repair erosion. They are flexible and permeable structures which allow water to filter through them. Vegetation and other biota can also establish in/around the habitat they create.

**I&APs:** People and organizations that have interest(s) in the proposed activities.

**Environmental Impact:** An environmental change caused by some human act.

**Implementer:** The person or organization responsible for the construction of WfWet rehabilitation interventions.

**Intervention:** An engineered structure such as a concrete or gabion weir, earthworks or re-vegetation that achieves identified objectives within a wetland e.g. raising of the water table within a drainage canal.

**Mitigation:** Actions to reduce the impact of a particular activity.

**Maintenance:** The replacement, repair or the reconstruction of an existing structure within the same footprint, in the same location, having the same capacity and performing the same function as the previous structure ('like for like').

**Perched wetland:** A wetland where the wetland water table is higher than the local and regional water-table (Wetland Management Series: WET-Origins, WRC Report TT 334/08, March 2008).

**PPP:** A process of involving the public in order to identify issues and concerns, and obtain feedback on options and impacts associated with a proposed project, programme or development. Public Participation Process in terms of NEMA refers to: a process in which potential interested and affected parties are given an opportunity to comment on, or raise issues relevant to specific project matters.

**Project:** An area of WfWet intervention generally defined by a quaternary catchment or similar management unit such as a national park in which a single implementer operates.

**Q value:** The peak flow (m<sup>3</sup>/s) for which a structure is designed, based on a given likely return period rainfall within the catchment

**Quaternary Catchment** : All land area drained by a fourth order tributary river and its tributaries.

**Rehabilitation:** Refers to re-instating the driving ecological forces (including hydrological, geomorphological and biological processes) that underlie a wetland, so as to improve the wetland's health and the ecological services that it delivers.

**Rehabilitation:** Restoring processes and characteristics that are sympathetic to and not conflicting with the natural dynamic of an ecological or physical system (Wetland Management Series: WET-Origins, WRC Report TT 334/08, March 2008).

**Significant impact:** An impact that by its magnitude, duration, intensity or probability of occurrence may have a notable effect on one or more aspects of the environment.

**Weir:** A dam-type structure placed across a watercourse to raise the water table of the surrounding ground and trap sediment on the upstream face without preventing water flow. Weirs are generally used to prevent erosion from progressing up exposed gullies.

**Wetland:** “Land which is transitional between terrestrial and aquatic systems where the water table is usually at or near the surface, or the land is periodically covered with shallow water and which in normal circumstances supports or would support vegetation typically adapted to life in saturated soils.” (National Water Act, No. 36 of 1998).

**Wetland:** Land where an excess of water is the dominant factor determining the nature of the soil development and the types of plants living there (Wetland Management Series: WET-Origins, WRC Report TT 334/08, March 2008).

## **v. ASSUMPTIONS AND LIMITATIONS**

In compiling this report, the following has been assumed:

- The information provided in this report is based on site visits that have been undertaken by the project team (EAP, Engineer, Wetland Ecologist, and SANBI PC) and their subsequent input into the Reporting, which includes intervention design drawings, the wetland status quo assessment, in addition to input from SANBI’s PC. It is understood that this information is sufficient for the authorisation processes and associated Phase 3 (Implementation phase). This data and relevant information has informed the findings and conclusions of this report.
- Information contained in this Report will be used during Phase 3 to guide and inform the Implementing Agents on design and construction specifications as part of Phase 3. Implementing Agents will thus use this Rehabilitation Plan and the information contained therein when constructing all interventions, the designs of which have been included in this Report.
- SANBI’s PCs will be undertaking the landowner engagement and have obtained the requisite landowner consent forms required as part of Phase 1 and 2 of this project. These include:
  - WW(0): Standard operating procedure,
  - WW(1): Wetland survey and Inspection consent,
  - WW(2): Terms and Conditions for carrying out wetland rehabilitation,
  - WW(3): Wetland Rehabilitation Activities Consent, and
  - WW(4): Property Inspection Prior to Wetland Rehabilitation.
- SANBI have provided all relevant information and documentation required to compile this Rehabilitation Plan.
- Rehabilitation activities should not be carried out until the final Wetland Rehabilitation Plan has been approved by DEA and formally signed off by SANBI.
- The implementation of this rehabilitation plan must take into account all relevant provisions of Working for Wetlands Best Management Practices and Construction Environmental Management Plan, the recommendations of the Basic Assessments and the requirements of the Environmental Authorisation (EA) for the project.
- DEA’s prerequisite to increase the requirement of percentage of funding to be spent on labour within the Working for Wetlands (WfWet) programme, has been taken into consideration by the project team during the planning process for wetland rehabilitation.

- Due to the dynamic nature of site conditions and associated biophysical changes within wetlands, this wetland rehabilitation plan is only valid for the 2013/14 financial year. Where appropriate interventions that have not been previously implemented or included in the 2009/10, 2010/11, 2011/12, 2012/2013 and 2013/14 Project Implementation Plans (PIPs) were reviewed and where necessary re-designed for inclusion into the 2013/14 wetland rehabilitation plan. This wetland rehabilitation plan therefore supersedes all previous plans for this project and only interventions from this plan should be included in the 2014/15 PIP.
- Should it be necessary to exclude interventions from the rehabilitation plan, the prioritisation of interventions across the project should strictly be followed.

#### **vi. GAPS IN KNOWLEDGE**

- The information in this Report is based on existing available information and input from SANBI's PC, the specialist wetland ecologists, the Engineer, EAP as well as comments from Interested and Affected Parties (I&APs). Until this Final Report has been finalised and signed off by SANBI, the content of the Report should be considered as preliminary.
- Designs for the rehabilitation interventions have been developed for site conditions as at the time of the planning site visits. Should site conditions change before the designs are implemented, changes to the design may be necessary. In this case, project implementers may require the assistance of a professional engineer.
- The cost of construction at each project location will vary due to factors such as the local cost and availability of material, transport distances etc. The unit costs have been agreed with SANBI's PCs based on their knowledge of past projects and include an allowance for escalation.
- The labour intensive targets identified in this project are based on assumed productivity rates for various components of the construction process. This will vary in practise and will require regular monitoring to ensure that labour targets are attained.

Aurecon acknowledges the authorship of any information contained in this document from previous planning years, to the previous provider: Land Resources International (LRI).

This Report must be read in conjunction with the following reports for this project:

1. Phase 1 Report – August 2010; and
2. Other Phase 2 Planning Reports which include the:
  - a. Basic Assessment Report (2014),
  - b. Nkomati Rehabilitation Plan (February 2014), and the
  - c. Wetland Status Quo Assessment (**Appendix A** of this report).

#### **vii. DISCLAIMER**

- This Rehabilitation Plan is for the Nkomati Wetland Project in the Mpumalanga Province. The plan is to be used to implement the interventions identified as necessary to rehabilitate the Belfast wetland, and is to be approved by the

Department of Environmental Affairs (DEA) as part of the conditions of Environmental Authorisation (EA).

- The intervention points and wetland boundary polygons provided in this report are based on the shapefiles that have been provided by the South African National Biodiversity Institute (SANBI). The datasets included in the Phase 1 Reports have been updated by the Wetland ecologists and verified by the SANBI Provincial Coordinators (PCs). All reasonable efforts have therefore been made to ensure that the data is accurate. However Aurecon South Africa (Pty) Ltd (Aurecon) does not accept responsibility for any remaining inaccuracies in the spatial data provided to us, which may be reflected in this report.
- Aurecon accepts responsibility for the engineering design to the extent that this is based on available information. The available information is limited to what could be interpreted during a single site visit of no longer than a few hours. No geotechnical, topographical, geomorphologic and other engineering related surveys have been undertaken to inform the design. This is non-standard engineering practice and therefore Aurecon is indemnified by the Client and does not accept responsibility for the associated risk of failure from the above limitations or any damages that may occur.
- This Rehabilitation Plan must not be amended without prior consultation and approval from DEA, the responsible Aurecon Environmental Assessment Practitioner (EAP), Engineer, SANBI PC and the SANBI Planning, Evaluation and Monitoring Manager.
- All changes must be motivated using the standard change request form supplemented with additional information as necessary.
- Aurecon is indemnified against any associated damages and accepts no liability associated with the construction and implementation of engineering interventions due to Aurecon being instructed to have limited contact with the implementer during the construction phase resulting in our inability to diligently supervise and assess any progress.
- The Client confirms that by accepting these drawings or reports, he acknowledges and accepts the abovementioned limitation of Aurecon's liability.

viii. DISTRIBUTION LIST

NAME	TITLE	FOR ACTION	FOR INFORMATION	RECEIVED PRIOR TO RELEASE
<b>PROPONENT</b>				
Umesh Bahadur	Programme Manager: Working for Wetlands		✓	
Eric Munzhedzi	Implementation Manager		✓	
André Beetge	SANBI Provincial coordinator	✓		✓
<b>NATIONAL STAKEHOLDERS</b>				
Refer to <b>Appendix G</b>			✓(E-copy of Rehab Plan)	
<b>PROVINCIAL STAKEHOLDERS &amp; I&amp;APs</b>				
Refer to <b>Appendix H</b>			✓(E-mail notification)	
<b>LANDOWNERS</b>				
Refer to <b>Appendix E</b>			✓(E-copy of Rehab Plan )	

*This page was left blank intentionally*

# 1 INTRODUCTION

## 1.1 Working for Wetlands programme overview

The Working for Wetlands (WfWetlands) Programme is a government programme (similar to Working for Water, Working on Fire and Working on Land) managed by the South African National Biodiversity Institute (SANBI) on behalf of the national government departments of Environmental Affairs (DEA), Water Affairs (DWA), and Agriculture, Forestry and Fisheries (DAFF), and forms part of the Expanded Public Works Programme (EPWP).

The vision of the WfWetlands Programme is to facilitate the protection, conservation, rehabilitation and sustainable use of wetlands in South Africa, in accordance with national policies and commitment to international conventions and regional relationships. The two main objectives of the programme are **wetland conservation** in South Africa and **poverty reduction** through job creation and skills development amongst vulnerable and marginalised groups.

The WfWetlands Programme forms part of the EPWP which seeks to draw significant numbers of unemployed into the productive sector of the economy. These individuals gain skills while they work thus increasing their capacity to earn an income. Rehabilitation efforts are thus focused on wetland conservation and the appropriate use of wetlands in a way that attempts to maximize employment creation, support for small business and the transfer of skills to the unemployed and poor.

In the 12 years since its inception, the WfWetlands Programme has invested R530 million in wetland rehabilitation and has been involved in over 900 wetlands thereby improving or securing the health of over 70 000 hectares of wetland environment. The WfWetlands Programme has created more than 12 800 jobs and 2.2 million person-days of paid work. Local people are recruited to work and targets for employment specify that the programme's workforce should comprise at least 60% women, 20% youth and 2% disabled people.

### 1.1.1 Programme, projects and phases

In order to manage the WfWetlands Programme, prioritised wetlands that have been identified for rehabilitation have been grouped into "Wetland Projects" within each Province, and each Wetland Project encompasses several wetland systems which are each divided into smaller, more manageable and homogenous wetland units. A Wetland Project may be located within one or more quaternary catchments within a Province.

Each Project is managed in three phases over a two-year cycle. The first two phases (Phase 1 and Phase 2) straddle the first year of the cycle and involve planning, identification, design and authorisation of interventions. The third phase (Phase 3) is implementation of specific interventions to achieve rehabilitation, and this takes place during the second year. SANBI is currently managing 35 Wetland Projects countrywide, and approximately 500 interventions within these Wetland Projects will be implemented to meet the objectives of the Programme.



### **1.1.2 Methods of rehabilitation**

The successful rehabilitation of a wetland requires that the cause of damage or degradation is addressed, and that the natural flow patterns of the wetland system are re-established (and flow is encouraged to disperse rather than to concentrate). The main aims of the WfWetlands Programme are:

- Restoration of hydrological integrity (e.g. raising the general water table or redistributing the water across the wetland area);
- Recreation of wetland habitat towards the conservation of biodiversity;
- Job creation and social upliftment.

Rehabilitation activities range from stabilising degradation to the more ambitious restoration of wetlands to their original conditions. Typical activities within the Wetland Projects include:

- Plugging artificial drainage channels created by development or historical agricultural practices to drain wetland areas for other land use purposes;
- Constructing structures (gabions and weirs) to divert or redistribute water to more natural flow paths, or to prevent erosion by unnatural flow rates that have resulted from unsustainable land use practices or development.
- Removing invasive alien or undesirable plant species from wetlands and their immediate catchments as part of the Working for Water Programme.

### **1.1.3 Intervention options**

Methods of wetland rehabilitation may include hard engineering interventions such as:

- Earth berms in conjunction with gabion systems to block artificial channels that drain water from or divert polluted water to the wetland;
- Concrete weirs to act as settling ponds, to reduce flow velocity or to re-disperse water across former wetland areas thereby re-establishing natural flow paths;
- Concrete, earth or gabion structures plugs to raise channel floors and reduce water velocity;
- Concrete or gabion structures to stabilise head-cut or other erosion and prevent gullies; and
- Gabion structures (mattresses, blankets or baskets) to provide a platform for the growth of desired wetland vegetation.

Soft engineering interventions also offer successful rehabilitation methods, and the following are often used together with the hard engineering interventions:

- The re-vegetation of stabilised areas with appropriate wetland and riparian species;
- The fencing off of sensitive areas within the wetland to keep grazers out and to allow for vegetation to become re-established;
- The use of biodegradable or natural soil retention systems such as eco-logs, plant plugs, grass or hay bales, and brush-packing techniques.
- The removal of undesirable plant and animal species as part of the Working for Water initiative. Alien invasive plant clearing is an important part of wetland rehabilitation;
- In some instances, the use of appropriate fire management and burning regimes.

For more information on the WfWetlands Programme, please refer to the WfWetlands Context Document included in the front of this report.

## 1.2 Project team

The project team currently comprises the SANBI Programme Manager who oversees the WfWetlands Programme and provincial coordinators (PCs) who oversee the identification and implementation of projects in their regions. They are supported by a small team based at the Pretoria Botanical Gardens who fulfil various roles such as finance, Geographical Information Systems (GIS) and training.

Aurecon South Africa (Pty) Ltd (Aurecon) has been appointed to undertake the project activities and associated reporting required by the WfWetlands Programme. The Aurecon team comprises design engineers and environmental assessment practitioners (EAPs) who undertake the planning, design and authorisation components of the project. The Aurecon Team is assisted by an external team of Wetland Ecologists who provide scientific insight into the operation of wetlands and bring expert and often local knowledge of the wetlands. The project team is also complimented by the SANBI Provincial Coordinators (PCs) who are each responsible for provincial planning and implementation.

## 1.3 Mpumalanga Wetland Projects

Wetland Projects for the 2014/2015 planning cycle were identified during the Phase 1 activities associated with the WfWetlands Programme. Catchment and wetland prioritisation assessments were undertaken by the wetland ecologist/s to identify priority catchments and associated wetlands within which rehabilitation work needed to be undertaken. A review was undertaken to determine local knowledge and identify existing studies of the quaternary catchments in the province. SANBI's current five year strategic plans were further used as a guide to identify wetlands, as well as data from the National Freshwater Ecosystem Priority Areas (NFEPA) project. Decisions on priority areas were informed by input from wetland forums, biodiversity/ conservation plans, municipalities, state departments and various other stakeholders.

Based on this process, the following quaternary catchments (and associated wetland systems) were identified for the 2014/2015 planning cycle in the Mpumalanga Province (**Table 1**):

**Table 1: Mpumalanga Wetland Projects**

<i>Project Name</i>	<i>Wetland Number</i>	<i>Wetland System</i>
Highveld Project	B20G-01	Zaalklapspruit
Lowveld Project	B42B-02	Gustav Klingbiel Nature Reserve
	B42B-03	Gustav Klingbiel Nature Reserve
	X31L-01	Bushbuckridge
	X31L-02	Bushbuckridge

<b>Project Name</b>	<b>Wetland Number</b>	<b>Wetland System</b>
Nkomati Project	X21F-01	Hartebeesspruit
Steelpoort Project	B32A-01	Hondekraal
	B32A-02	Parys

A basic EIA application has been lodged with the National DEA on the 4 March 2014 for the undertaking of listed activities in terms of NEMA. The DEA will issue an EA that will permit the WfWetlands Programme to undertake wetland rehabilitation in the abovementioned wetland systems within the Mpumalanga Province. This Rehabilitation Plan focusses on the Nkomati Wetland Project (Ci) and is to be submitted to DEA for their approval as a condition of the EA.

### **1.3.1 The Nkomati Wetland Project**

This document comprises the Rehabilitation Plan for the Nkomati Wetland Project and deals specifically with the Belfast wetland. The Rehabilitation Plan will be the primary working document for the project via the implementation (construction/ undertaking of) of interventions<sup>8</sup> required to meet the wetland rehabilitation objectives. The document details the general methodology that has been adopted for the planning of rehabilitation interventions for identified wetlands. Details of the rehabilitation planning for each wetland and the selected intervention options (including designs, dimensions and locations) within each wetland are presented, along with baseline Monitoring and Evaluation (M&E) data.

Reports on the current status of the wetland and design drawings are included as **Appendix A** and **B** respectively of this report. Upon approval of this Rehabilitation Plan by both DEA and the directly affected landowners, the work detail for the project will be implemented within a year with on-going monitoring being undertaken from thereon.

### **1.4 Project scope**

The scope of this Wetland Project is detailed in the **Table 2** below:

**Table 2: Project Scope**

<b>Quaternary Catchments</b>	X21F-01
<b>Quaternary Catchment area (Ha)</b>	39 700
<b>Number of wetlands identified during the assessment</b>	1
<b>Extension of existing work (previous financial year)</b>	Yes
<b>Work to commence at new wetlands in 2014/2015</b>	Yes

<sup>8</sup> This could include soft options such as alien clearing, eco-logs, gabion structures as well as hard structures, for example weirs.

<b>Available budget for new interventions</b>	R 2 037 000
<b>Available budget for maintenance to existing interventions</b>	100% of the budget is available for maintenance with the remainder being used for new interventions
<b>Estimated cost of new interventions</b>	R 5 685 778
<b>Estimated cost of maintenance to existing interventions</b>	N/A

*This page was left blank intentionally*

## 2 GENERAL METHODOLOGY

Each Wetland Project is managed in three phases over a two-year cycle as shown in the flow diagram in **Figure 1** below. The first two phases straddle the first year of the cycle and involve planning, identification, design and authorisation of interventions. The third phase is implementation, which takes place during the second year.

### 2.1 Landowner consent

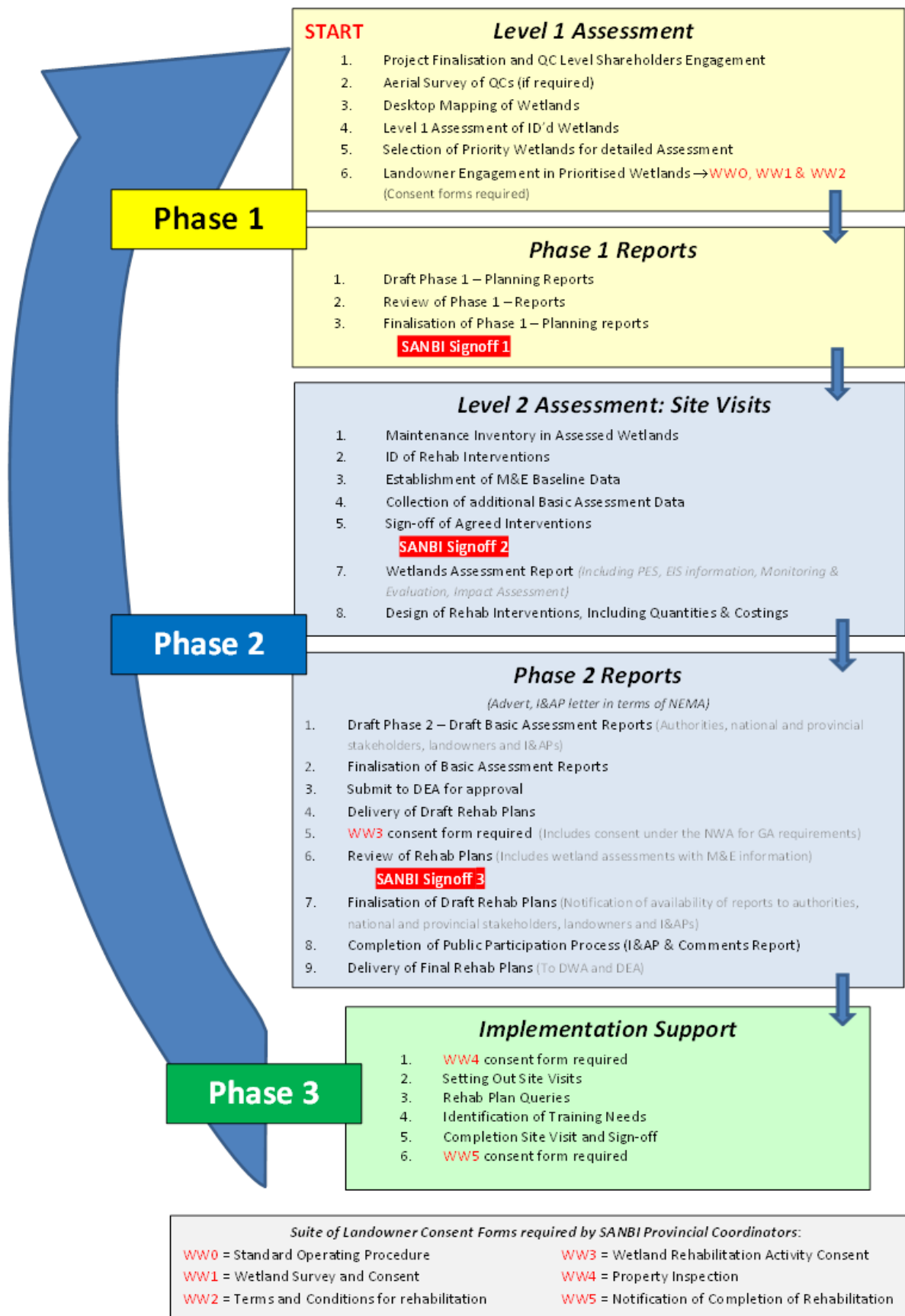
The flow diagram (**Figure 1**) also clearly demonstrates the point at which various consent forms must be approved via signature from the directly affected landowner. SANBI's PCs are responsible for undertaking the necessary landowner engagement and for ensuring that the requisite landowner consent forms required as part of Phase 1 and 2 of this project are signed. These include:

- WW(0): Standard operating procedure
- WW(1): Wetland survey and Inspection consent,
- WW(2): Terms and Conditions for carrying out wetland rehabilitation,
- WW(3): Wetland Rehabilitation Activities Consent,
- WW(4): Property Inspection Prior to Wetland Rehabilitation, and
- WW(5): Notification of Completion of Rehabilitation.

Refer to **Appendix E** for a copy of the landowner agreements.

### 2.2 Phase 1

The wetland ecologist responsible for the Mpumalanga Province undertook a desktop study to determine the most suitable wetlands for the WfWetlands rehabilitation efforts. The involvement of Provincial Wetland Forums and other key stakeholders was a critical component of the wetland identification processes since these stakeholders are representative of diverse groups with shared interests (e.g. from government institutions to amateur ecological enthusiasts). This phase also involved initial communication with local land-owners and other interested and affected parties to gauge the social benefits of the work. The following Belfast wetland was prioritised and agreed to by the various parties for the Nkomati Wetland Project.



**Figure 1: The three phases that must be undertaken for the successful rehabilitation of wetlands**

## 2.3 Phase 2

### 2.3.1 Site visits

Phase 2 required site visits attended by the fieldwork team comprising a wetland ecologist, a design engineer, an EAP, and a SANBI provincial coordinator. This allowed for a highly collaborative approach to be used, as options were discussed by experts from different scientific disciplines, as well as local inhabitants with deep anecdotal knowledge. The following site visits were undertaken for the Nkomati Wetland Project:

- Hartbeesspruit wetland (August 2013)

The following team members attended the site visits:

- Anton Linström (wetland ecologist),
- Cilliers Blaauw (engineer),
- Andre Beetge (SANBI PC),
- A. Bothma (Implementing Agent's Project Manager),

At the end of the site visit the rehabilitation objectives together with the location layout of the proposed interventions were agreed upon by the project team.

During Phase 2, monitoring systems were put in place to support the continuous evaluation of interventions. The systems monitor both the environmental and social benefits of the interventions. As part of Phase 2 site visit, a maintenance inventory of any existing interventions that were damaged and / or failing and thus requiring maintenance was compiled by the PC, in consultation with the Design Engineer.

### 2.3.2 Wetland Status Quo Reports

The time and resources required for detailed assessments of the wetlands was generally limited, and thus a rapid procedure was adopted to assist the project team in systematically carrying out the assessments under constraints. The procedure was based on the following steps:

#### a. Assess impacts and threats

The following steps were used by the wetland ecologist to assess the impacts and threats within each wetland system:

- The hydro-geomorphic setting of the wetland was described according to Kotze *et al.* (2005);
- The overall health of the wetland at a Level 1 assessment using WET-Health (Macfarlane *et al.*, 2006) was described and verified;
- Based on the above findings, the specific impacts and/or threats to be addressed by structural rehabilitation were identified, and described at a Level 2 assessment (e.g. for headcut erosion, the specific dimensions and level of activity of headcuts would be described).



## **b. Set rehabilitation objectives and choose appropriate measures for achieving the objectives**

Rehabilitation objectives were informed by the above assessments (e.g., if the primary threat to the wetland was identified as headcut erosion threatening to propagate through the wetland then an appropriate rehabilitation objective would be to halt propagation of the erosion headcut). The engineer was assisted by the wetland ecologist in selecting appropriate interventions to achieve the identified rehabilitation objectives.

## **c. Assess the likely contribution of rehabilitation interventions to wetland health and ecosystem delivery**

An assessment of the predicted contribution that the identified rehabilitation interventions would make to improving wetland health and ecosystem delivery through addressing the identified impacts/threats was required. Without these assessments, a wetland rehabilitation programme is unlikely to have a well-informed basis on which to improve the rehabilitation's "return on investment" (with return being measured in terms of wetland health and ecosystem services delivery). This is directly linked into the *WfWet* Monitoring and Evaluation Framework. The following steps were followed to assess the contribution of rehabilitation interventions within each wetland system:

- The spatial area likely to be affected by the proposed intervention/s was identified.
- The benefits that were likely to result from achievement of the rehabilitation objective/s were determined in terms of the integrity of the affected area of the wetland (using WET-Health) and the ecosystem services that the area delivers (using WET-Ecoservices: Kotze *et al.*, 2005).

The same approach was used for the assessment of the different threats/impacts that would be addressed through rehabilitation. In this instance, the situation without rehabilitation (i.e. no intervention or *status quo*) was compared to the situation with rehabilitation. For health, both situations were scored on a scale of 0 (critically altered) to 10 (pristine), and this was undertaken for the hydrology, geomorphology and vegetation components of health.

The benefit achieved is the improvement in relation to the maximum score. For example, in areas threatened by headcut erosion which are to be rehabilitated by halting the spreading of the headcut, the benefits in terms of health would be determined based on the difference between the current health and the projected health if the headcut proceeded to erode through the threatened area. In such a case, stopping the expansion of the headcut would presumably secure the current situation.

Refer to **Appendix A** which contains the Wetland status quo assessment.

### **2.3.3 Identification and location of intervention designs**

The project teams evaluated the various rehabilitation intervention options available and selected the most appropriate intervention options to achieve the rehabilitation objectives for the wetland. Choices of intervention options were also informed by the increased labour

component as required by DEA. Any previously planned interventions that had not been implemented or included into the previous planning cycle reports were assessed and included into the current year's selection, if appropriate to the re-assessed rehabilitation objectives for the wetland. Agreed cost/benefit ratios in terms of 'Rands per hectare of rehabilitated wetland' were taken into account, along with operational considerations and larger scale project objectives.

After the appropriate intervention options were selected by the planning team, the engineer, in consultation with the wetland ecologist determined the most appropriate designs and locations for the identified interventions in order to achieve the rehabilitation objectives for the wetland in question. GPS coordinates and digital photographs – sufficiently detailed to clearly identify the selected locations were then taken for record purposes. Appropriate dimensions of the locations were measured in order to be able to design and calculate quantities for the interventions.

**a. Intervention naming convention**

A new naming convention was introduced in the 2011/2012 planning phase and this has been continued in this years' Rehabilitation Plans.

The **historical naming convention** for interventions is explained below:  
A00A-00-000, where

Number	Explanation
A00A	quaternary number
00	wetland number
000	intervention number

The accepted **naming convention** which has been applied to all interventions (old and new) is explained below with examples being provided as well.

A00A-00-000-00 (new),

A00A-00-000-01 (maintenance), where

Number	Explanation		
A00A	quaternary number		
00	wetland number		
200	intervention number with the '200' included for differentiation from previous interventions		
00	<b>New</b> intervention	01	<b>Maintenance</b> to intervention

An additional two digits will therefore be added to the end of each of the intervention numbers to indicate maintenance on this specific intervention and/ or whether the structure is

new (00) for tracking purposes. All new interventions will have a default of 00. Should built structures require maintenance, they would be numbered numerically beginning with '01' e.g. 01, 02, 03, etc. for each year that maintenance is undertaken on the intervention.

In addition, the new naming convention also added a '200' digit in the front of the intervention number to avoid confusion from previously named interventions.

#### **2.3.4 Collection of Monitoring & Evaluation Baseline and Basic Assessments Data**

In accordance with WET-Rehab-Evaluate (Cowden & Kotze, 2007) the collection of baseline monitoring information is important to allow for the evaluation of the performance of wetland rehabilitation activities. Monitoring and evaluation facilitate the dissemination of lessons learnt and provide a means of reporting on the success of specific wetland rehabilitation initiatives. The monitoring and evaluation (M&E) of an identified wetland rehabilitation project's performance is therefore considered vital to inform the evaluation of wetland rehabilitation success. Baseline monitoring needs to be carried out prior to the implementation of rehabilitation activities to provide comparable data for monitoring at a later stage, following the wetland rehabilitation.

While the engineer was working on measurement of the intervention locations, the wetland ecologist gathered the additional data required for M&E baselines which included the following:

- Photographs and GPS co-ordinates of the identified problems;
- Fixed-point photography (in accordance with the guidelines outlined in WET-Rehab-Evaluate: Cowden & Kotze, 2007);
- WET-Health information (allowing the comparison of wetland ecological integrity before and after rehabilitation activities); and
- Details relating to the estimated hectare equivalents.

Any additional data/information required for the assessment of the potential impacts of the proposed interventions and construction activities was also collected by the wetland ecologist and the EAP to inform the Basic Assessments.

At the end of the site visit a location layout of the agreed interventions and rehabilitation objectives was signed off by the SANBI PC and landowner, as indicated by SANBI Signoff 2 in **Figure 1**.

#### **2.3.5 Engineering design**

The detailed procedure followed by the engineers is described in the Engineering Design Brief, which documents the procedure agreed upon by Aurecon and SANBI. The document also addresses important issues such as risk and liability. A summary of the process followed for the engineering design is described below:

- A hydrological assessment was undertaken to quantify the volume of water expected to be dealt with by the intervention for various recurrence intervals. The results of this

assessment allowed the engineer to select a design flow to be applied to the intervention.

- Construction materials were selected based on a range of site specific criteria including expected velocities, availability of materials such as rock, labour intensive targets, maintenance requirements etc.
- Interventions were designed based on the above to meet the objectives for wetland rehabilitation.
- The intervention designs were drafted to show, at a minimum, a plan view, a longitudinal section and front elevation at appropriate scales, and appropriate dimensions. A legend indicating basket sizes was included for gabion structures to improve design clarity for the implementers.
- Bills of quantities were calculated for the designs and cost estimates were made based on unit costs and norms for each project area, as agreed with the SANBI PC.
- Maintenance requirements for existing interventions in the assessed wetlands were similarly detailed and the anticipated costs calculated.

The engineer also reviewed and, if necessary, adjusted any previously planned interventions that are included into the current rehabilitation plan.

### **2.3.6 Development of the Rehabilitation Plan**

The standardised Rehabilitation Plan format has been approved by SANBI Programme Manager: Planning, Monitoring and Evaluation.

Summaries of the wetland prioritisation, problems and rehabilitation objectives were documented in the Nkomati Rehabilitation Plan. Reports on the current status of the wetland, based on, *inter alia*, the information collected during the implementation of WET-Tools, were prepared by the wetland ecologist, and included as **Appendix A** to this report.

The Final Nkomati Rehabilitation Plan was submitted to the SANBI PC and wetland ecologist for review before it was made available to stakeholders for comment. Any comments received during the comments period were taken into account in the finalisation of the Rehabilitation Plans.

#### **a. Reporting Format**

All relevant information acquired during the assessments and field visits has been included in this document and its appendices in a hierarchy as shown in **Figure 2** below.

- All intervention locations are given in geographical coordinates, (degrees, minutes and seconds), based on the WGS84 datum.
- Mapping was done in Albers Equal Area Conic projection, WGS84 datum. The grids displayed on all maps are geographic and measured in Degrees Minutes and Seconds. The scale bar on each map is based on Albers Equal Area Conic projection and measured in metres.

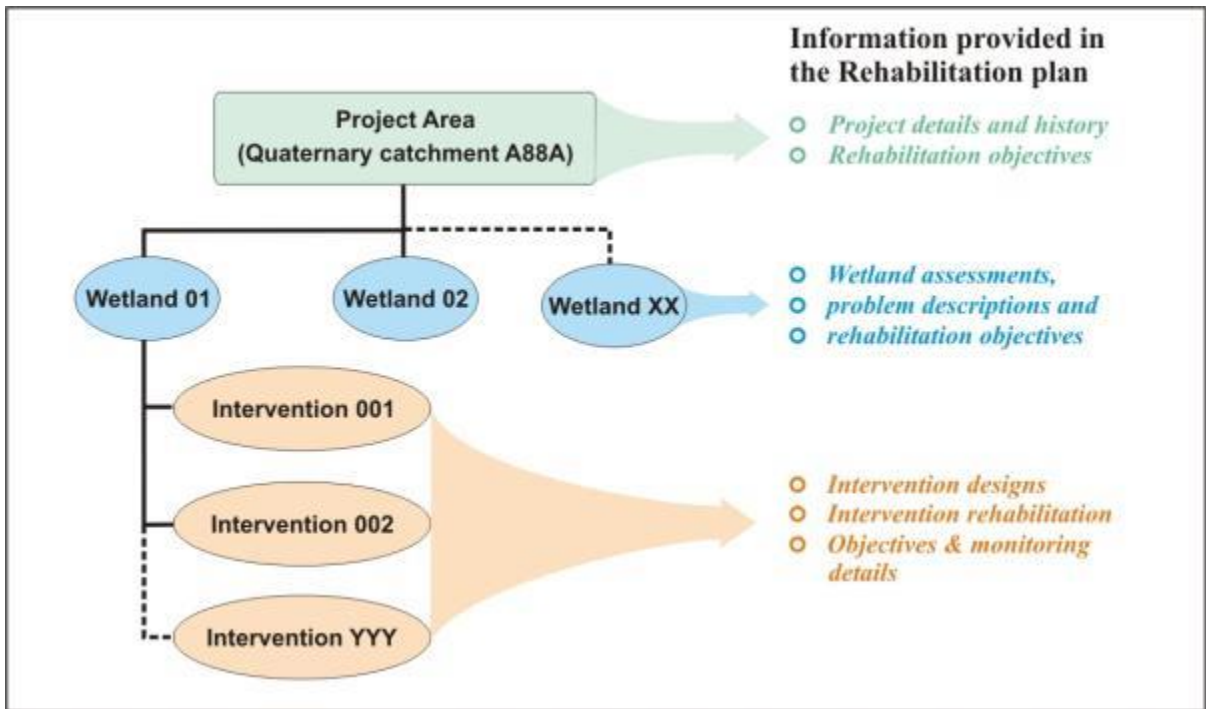


Figure 2: Hierarchy used in the Wetland Rehabilitation Plan

### 3 PROJECT DESCRIPTION

#### 3.1 Project details

**Background:** The Nkomati Wetland Project is located in the X21F quaternary catchment. For further details refer to **Figure 3** and **Table 3** below.

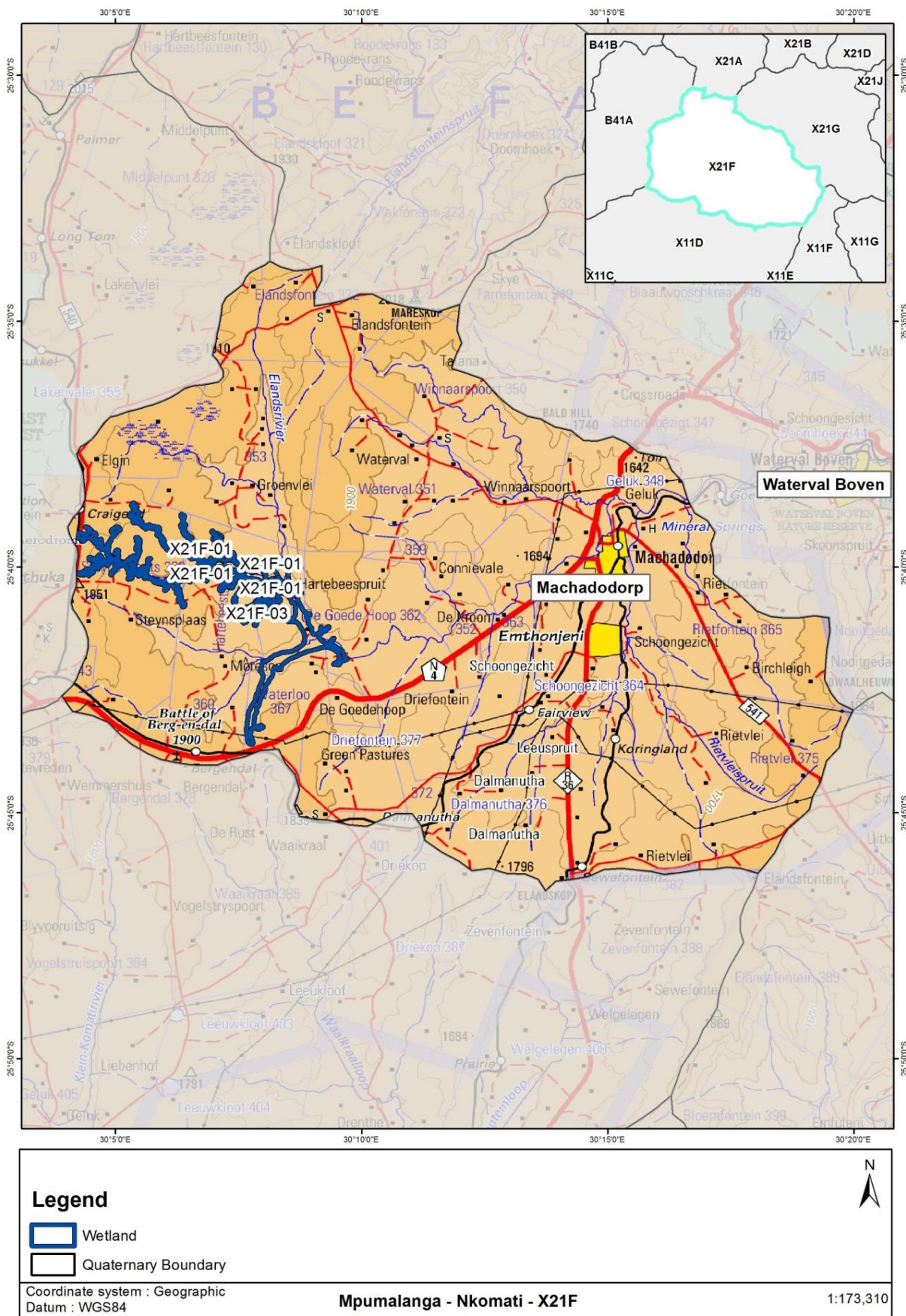
**Table 3: Project details**

<b>Project Name</b>	Nkomati
<b>Region (Province)</b>	Mpumalanga
<b>Project Budget</b>	R 2 037 000
<b>Planning Category</b>	Category 2
<b>Nearest Town/s</b>	Belfast/Machadodorp
<b>Partnership</b>	MTPA and EWT

The Nkomati wetland rehabilitation project is located in the X21F quaternary catchment near the towns of Belfast and Machadodorp in the Mpumalanga province. The focus of the project was shifted in 2007, from catchment B41A (Steenkampsberg) to X21F (which forms part of the Crocodile Sub-Water Management Area and Nkomati Water Management Area).

The wetlands within the catchment are considered to be important from a water quantity and quality perspective, especially due to their key position in the upper reaches of the Crocodile River, a major drainage system of South Africa. These wetlands therefore contribute towards the regulation of stream flow and the maintenance of water quality in the source streams of this river. It is important to note that the wetlands within the identified catchment have been impacted upon by agriculture, forestry and fly-fishing.

A review of the Mpumalanga Biodiversity Conservation Plan (MBCP) highlights that the portions of the Nkomati project area (X21F) are considered to be 'Important and Necessary' in terms of their contribution towards terrestrial biodiversity. The rehabilitation of the wetland systems within this area is therefore likely to contribute towards the maintenance of the biodiversity within the region.



**Figure 3: Topographic map showing X21F quaternary catchment's locality, cadastral boundaries and access routes**

**Wetlands selected:** One wetland within the Nkomati Wetland Project have been identified for rehabilitation efforts for this planning cycle are namely the Belfast wetland (**Table 4**).

**Table 4: Identified wetlands within the Nkomati Wetland Project**

Wetland Number	Wetland Name	Longitude	Latitude
X21F-01	Hartebeesspruit 01	30°07'42.30" E	25°40'09.28" S

### 3.2 Landowner details

The landowners were identified for this Wetland Project (**Table 5**) and consent for any proposed wetland rehabilitation (subject to the approval of the Final Rehabilitation Plans) has been sought. Copies of the consent obtained are provided in **Appendix E**.

**Table 5: List of Landowners and SG Key**

Wetland Number	Property SG Key	Owner	Consent Obtained
X21F-01	T0JT00000000036100005	Adriaan Smuts	Yes

### 3.3 Projected rehabilitation indicators

The rehabilitation planning process relies on the measurement of wetland ecological integrity based on the assessment of the hydrology, geomorphology and vegetation components of the specified systems. In theory this information could be converted into a hectare equivalent which could serve as a baseline indicator to then provide a projection of the area of wetland habitat gained or secured. In practice the level of confidence associated with interpretations of this nature are usually low and difficult to defend and hence should be interpreted with great caution. For example, this approach should not be followed for hectare equivalents secured where a large wetland complex with many contiguous tributary arms of unknown size are present upstream. Similarly, the area of wetland gained should not be determined if there isn't good knowledge of inter alia the hydrogeological characteristics of both the bedrock and unconsolidated sedimentary cover. In well-known systems rehabilitation plans can outline the following projected values for the proposed wetland rehabilitation, which can be used as an indicator of wetland rehabilitation success within each wetland system (**Table 6**):

**Table 6: Projected Values**

Wetland No.	Area (ha)	Current hectare equivalents	Projected hectare equivalents gained	Total projected hectare equivalents	% Increase on current hectare equivalents	Projected hectare equivalents secured
X21F-01	344	212.4	82.2	294.6	23.9	82.2

Please note that important factors such as biodiversity, species habitat, sense of place cultural significance etc. are not incorporated into hectare equivalents and therefore the full value of the



system is not quantified. For the purpose of this report and due to the reasons above, the above table (**Table 6**) only reflects the amount of hectares physically gained as a result of the interventions.

### 3.4 Prioritisation of wetlands

As there is only one wetland, no prioritisation took place.

### 3.5 Interventions required

The following table (**Table 7**) provides a list of interventions requiring redesign, maintenance and or new structures for this project and their associated new intervention number.

**Table 7: Summary of the interventions including a cross reference of intervention numbers**

Descriptive name	Old intervention number (if applicable)	New Intervention number	Proposed action	Reference document
NEW				
Stone Masonry & Concrete Road strips	N/A	X21F-01-209-00	Construct Stone masonry and concrete road strips to prevent further impacts of vehicle tracks.	Nkomati Final Rehab. Plan Feb. 2014
Stone Masonry Weir	N/A	X21F-01-210-00	Construct stone masonry weir to trap sediment in the channel and raise the water level to rewet surrounding area.	Nkomati Final Rehab. Plan Feb. 2014
Removal of log-jams in stream	N/A	X21F-01-211-00	Removal of log-jams to create a more stable environment for wetland recovery purposes and prevent possible damage to structures due to debris flow and build-up.	Nkomati Final Rehab. Plan Feb. 2014
Stone Masonry Weir	N/A	X21F-01-212-00	Construct stone masonry weir to trap sediment in the channel and raise the water level to rewet surrounding area.	Nkomati Final Rehab. Plan Feb. 2014
CCA Poles River Crossing (Walkway)	N/A	X21F-01-213-00	Assemble CCA Pole pedestrian walkway over stream	Nkomati Final Rehab. Plan Feb. 2014
Earth Structures (Berms) and revegetate	N/A	X21F-01-214-00	Construction of berms to raise water level, spread water more evenly across wetland and prevent further incision of channel.	Nkomati Final Rehab. Plan Feb. 2014

<b>Descriptive name</b>	<b>Old intervention number (if applicable)</b>	<b>New Intervention number</b>	<b>Proposed action</b>	<b>Reference document</b>
Gabion weir	N/A	X21F-01-215-00	Construct gabion weir to trap sediment in the channel and raise the water level to rewet surrounding area.	Nkomati Final Rehab. Plan Feb. 2014
Earth Structures (Berms)	N/A	X21F-01-216-00	Construction of berms to raise water level, spread water more evenly across wetland and prevent further incision of channel.	Nkomati Final Rehab. Plan Feb. 2014
Stone Masonry Weir	N/A	X21F-01-217-00	Construct stone masonry weir to trap sediment in the channel and raise the water level to rewet surrounding area.	Nkomati Final Rehab. Plan Feb. 2014
Earth works (cut & fill) & with earth structures (berm) and re-vegetate	N/A	X21F-01-218-00	Construction of a berm to prevent collection of water. Cut and fill furrow to NGL to spread water more evenly across wetland and prevent further incision of channel	Nkomati Final Rehab. Plan Feb. 2014
Earth Works (cut & fill) and re-vegetate	N/A	X21F-01-219-00	Cut and fill existing furrows to NGL to spread water more evenly across wetland and prevent further incision of channel.	Nkomati Final Rehab. Plan Feb. 2014
Stone Masonry Weir	N/A	X21F-01-220-00	Construct stone masonry weir to trap sediment in the channel and raise the water level to rewet surrounding area.	Nkomati Final Rehab. Plan Feb. 2014
Earth Structures Works (Earth Plugs) and Re-vegetate	N/A	X21F-01-221-00	Construction of alternating earth plugs to raise water level, spread water more evenly across wetland and prevent further incision of channel.	Nkomati Final Rehab. Plan Feb. 2014
Stone Masonry Weir	N/A	X21F-01-222-00	Construct stone masonry weir to trap sediment in the channel and raise the water level to rewet	Nkomati Final Rehab. Plan Feb. 2014

Descriptive name	Old intervention number (if applicable)	New Intervention number	Proposed action	Reference document
			surrounding area.	
Earth works (cut & fill) and re-vegetate	N/A	X21F-01-223-00	Construction of berms to raise water level, Cut and fill existing furrow to NGL to spread water more evenly across wetland and prevent further incision of channel.	Nkomati Final Rehab. Plan Feb. 2014
MAINTENANCE				
N/A				
INTERVENTION REDESIGNS				
N/A				

The intervention designs/ drawings included in this Rehabilitation Plan have been labelled according to the **new naming convention** only. For historical labelling of interventions, please use the table above (**Table 7**) as a cross reference.

## 4 Hartebeesspruit WETLAND –X21F

### 4.1 Wetland details

The Hartebeesspruit 01 wetland (X21F-01) is considered to be a channelled valley-bottom, driven primarily by the overtopping of water within the channel. The system is fed by a number of lateral valley-bottom and seepage wetland areas. The majority of the wetland's catchment is characterized natural veld used for beef production, but there are areas of cultivation and plantation forestry. A number of relatively small farm dams were identified upstream of the wetland.

The assessment of the Hartebeesspruit 01 wetland, its problems, and the development of the rehabilitation objectives are described in detail in **Appendix A: Wetland Status Quo Reports**. The following sections provide a brief summary for this wetland.

The wetland has been subjected to a number of impacts associated with the modification of the system's hydrology, which was likely to have been initiated to allow cultivation within the valley bottom. The confinement of flow within drainage channels and the straightening of the channel in the lower reaches of the wetland have resulted in the incision of the natural channel. The incision of the channel has resulted in further impact on the system's hydrology, with the desiccation of the adjacent wetland habitat and the encroachment of alien invasive and terrestrial species. The incision of the channel has resulted in the formation of head-cut erosion within the system; with large-scale head-cut erosion being identified in the central portion of the wetland system (soil profile includes a hard plinthite layer which is serving to slow the promulgation of the erosion). Head-cut erosion was also identified in the upper reaches of the system where lateral inputs entered the incised channel.

The Hartebeesspruit 01 wetland (

Table 8) is generally an channelled valley-bottom wetland that is primarily driven by the overtopping of water from the channel which dissects the wetland.

The primary objective of the proposed interventions within the wetland system would be the stabilisation of the identified head-cut erosion, securing the current level of ecosystem delivery and levels of wetland integrity. The secondary objective of the proposed interventions within the wetland system would be to improve the hydrological integrity of the wetland by deactivating the impacts of the drainage network and the incised channel.

**Table 8: Summary of the wetland details**

<b>Wetland Name</b>	Hartebeesspruit 01
<b>Wetland Number</b>	X21F-01
<b>River System Name</b>	Crocodile Sub-Water Management Area and Nkomati Water Management Area
<b>Land Use in Catchment</b>	Livestock Farming, crop production, urban
<b>Land Use in Wetland</b>	Livestock production
<b>No. of Properties Intersecting Wetland Area</b>	1
<b>Date of Planning Site Visit</b>	August 2013
<b>Wetland Assessor(s)</b>	Anton Linström
<b>Wetland size</b>	2182 ha

#### 4.2 Site photos



Channel cutting through wetland



**Figure 4: Site photos of the Hartebeesspruit wetland**

### **4.3 Wetland problems**

The wetland has been subjected to a number of impacts associated with the modification of the system's hydrology, which was likely to have been initiated to allow cultivation within the valley bottom. The confinement of flow within drainage channels and the straightening of the channel in the lower reaches of the wetland have resulted in the incision of the natural channel. The incision of the channel has resulted in further impact on the system's hydrology, with the desiccation of the adjacent wetland habitat and the encroachment of alien invasive and terrestrial species. The incision of the channel has resulted in the formation of head-cut erosion within the system; with large-scale head-cut erosion being identified in the central portion of the wetland system (soil profile includes a hard plinthite layer which is serving to slow the promulgation of the erosion). Head-cut erosion was also identified in the upper reaches of the system where lateral inputs entered the incised channel.

Other less significant but noticeable impacts include:

- Artificial drainage channels;
- Channel erosion;
- Grazing and trampling;
- Trout dams;
- Alien invasive species;
- Plantations;
- Infrastructure (farm dwellings, roads);
- Recent and historic cultivation; etc.

### **4.4 Rehabilitation objectives**

The primary objective of the proposed interventions within the wetland system would be the stabilisation of the identified head-cut erosion, securing the current level of ecosystem delivery and levels of wetland integrity. The secondary objective of the proposed

interventions within the wetland system would be to improve the hydrological integrity of the wetland by deactivating the impacts of the drainage network and the incised channel.

#### 4.5 Summary proposed interventions

The proposed interventions will address the wetland problems and achieve the rehabilitation objectives as follows:

- The proposed rehabilitation would attempt to modify the flow patterns within the lower reaches of the system to promote the more diffuse flow across the wetland than having flow confined to the incised channel and drainage channels.
- the stabilisation of the head-cut erosion, securing the current level of wetland functioning and integrity;
- deactivation of the incised channel and drainage channels to restore the hydrological integrity of the wetland system;

The following interventions are currently being implemented (**Table 9**):

**Table 9: Summary of current interventions, X21F-01**

Intervention Number	Intervention Structure Type	Latitude (S)	Longitude (E)
X21F-01-201-00	Concrete weir	25°40'25.0"	30°08'18.4"
X21F-01-202-00	Concrete weir	25°40'15.1"	30°07'55.2"
X21F-01-203-00	Gabion	25°40'13.9"	30°07'50.5"
X21F-01-204-00	Earth Works	25°40'01.6"	30°07'33.7"
X21F-01-205-00	Gabion	25°40'12.0"	30°07'47"
X21F-01-206-00	Earth Structure	25°40'07.3"	30°07'40.4"
X21F-01-207-00	Earth Works	25°40'04"	30°07'52"
X21F-01-208-00	Earth Works	25°40'04"	30°07'57"

The new interventions that are proposed (**Figure 5**) are discussed in detail in the subsequent sections of this report. The table below (**Table 10**) provides a summary of the new interventions. The “implementation order” as depicted in the table indicates the timing order in which interventions should be implemented within the wetland (number 1 first). The “priority” as depicted in the table indicates the relative importance of each intervention across the project as a whole – if interventions have to be omitted for any reason, those with the lowest priority (highest number) across the whole project should be omitted first.

**Table 10: Summary of proposed new interventions, X21F-01**

<b>Intervention Number</b>	<b>Intervention Structure Type</b>	<b>Implementation Order</b>	<b>Priority</b>	<b>Structure Cost (Excl. Vat)</b>
<b>X21F-01-209-00</b>	Stone Masonry & Concrete Road strips	1	01	<b>R733 115</b>
<b>X21F-01-210-00</b>	Stone Masonry Weir	8	08	<b>R 498 570</b>
<b>X21F-01-211-00</b>	Removal of log-jams in stream	9	09	<b>R 40 000</b>
<b>X21F-01-212-00</b>	Stone Masonry Weir	6	06	<b>R 794 290</b>
<b>X21F-01-213-00</b>	CCA Poles River Crossing (Walkway)	7	07	<b>R 345 000</b>
<b>X21F-01-214-00</b>	Earth Structures (Berms)	10	10	<b>R 29 015</b>
<b>X21F-01-215-00</b>	Gabion weir	5	05	<b>R 512 360</b>
<b>X21F-01-216-00</b>	Earth Structures (Berms)	11	11	<b>R 112 725</b>
<b>X21F-01-217-00</b>	Stone Masonry Weir	4	04	<b>R674 085</b>
<b>X21F-01-218-00</b>	Earth Works & Earth Structure (Berm)	12	12	<b>R163 030</b>
<b>X21F-01-219-00</b>	Earth Works	14	14	<b>R 331 770</b>
<b>X21F-01-220-00</b>	Stone Masonry Weir	3	03	<b>R573 085</b>
<b>X21F-01-221-00</b>	Earth Structures (Earth Plugs)	13	13	<b>R 6542. 50</b>
<b>X21F-01-222-00</b>	Stone Masonry Weir	2	02	<b>R833 140</b>
<b>X21F-01-223-00</b>	Earth Works	15	15	<b>R 39 050</b>
<b>Total</b>				<b>R 5,685,777.50</b>

**Please note** that the location of the interventions described in section 4.7 may change as a result of changes in the landscape (due to continued erosion, for example) during the time period that has lapsed between the initial planning site visit and the actual implementation thereof.



#### 4.6 Design selection and sizing

The objective of the interventions is to deactivate a drain and spread the water that it would have carried into the surrounding wetlands to the east and west. The most appropriate and cost effective method of doing this was considered to involve:

- Constructing a combination of concrete, gabion and earthen diversion structures that would divert flows out of the channel and into the wetland areas. Earthen diversions were specified in areas of low energy and will be vegetated to increase their stability. Concrete and gabion diversion structures were specified where higher energy is expected
- Interventions were designed for the purpose of lifting the water level in the channel, although not necessarily allowing high volumes of surface flow during floods to spread across the wetland, but rather containing permanent flow in the channel while controlling the water energy thereof to reduce erosion of the channel.
- In the presence of rock in the channel suitable for more sound foundations concrete Stone masonry was preferred. Due to the potential difficulty of constructing gabions in rocky conditions gabions were considered as alternative only where the physical height of the structure was excessive.
- Earth plugs described as earth structures were used to divert surface water flow out of the existing channel. Alternative earth works (cut and fill methods) were used to cut existing earth berms and fill in lengths of adjacent (or in close proximity) drainage channels/ furrows.
- Throughout the intervention type selection process labour content versus budget allocations were taken into consideration.

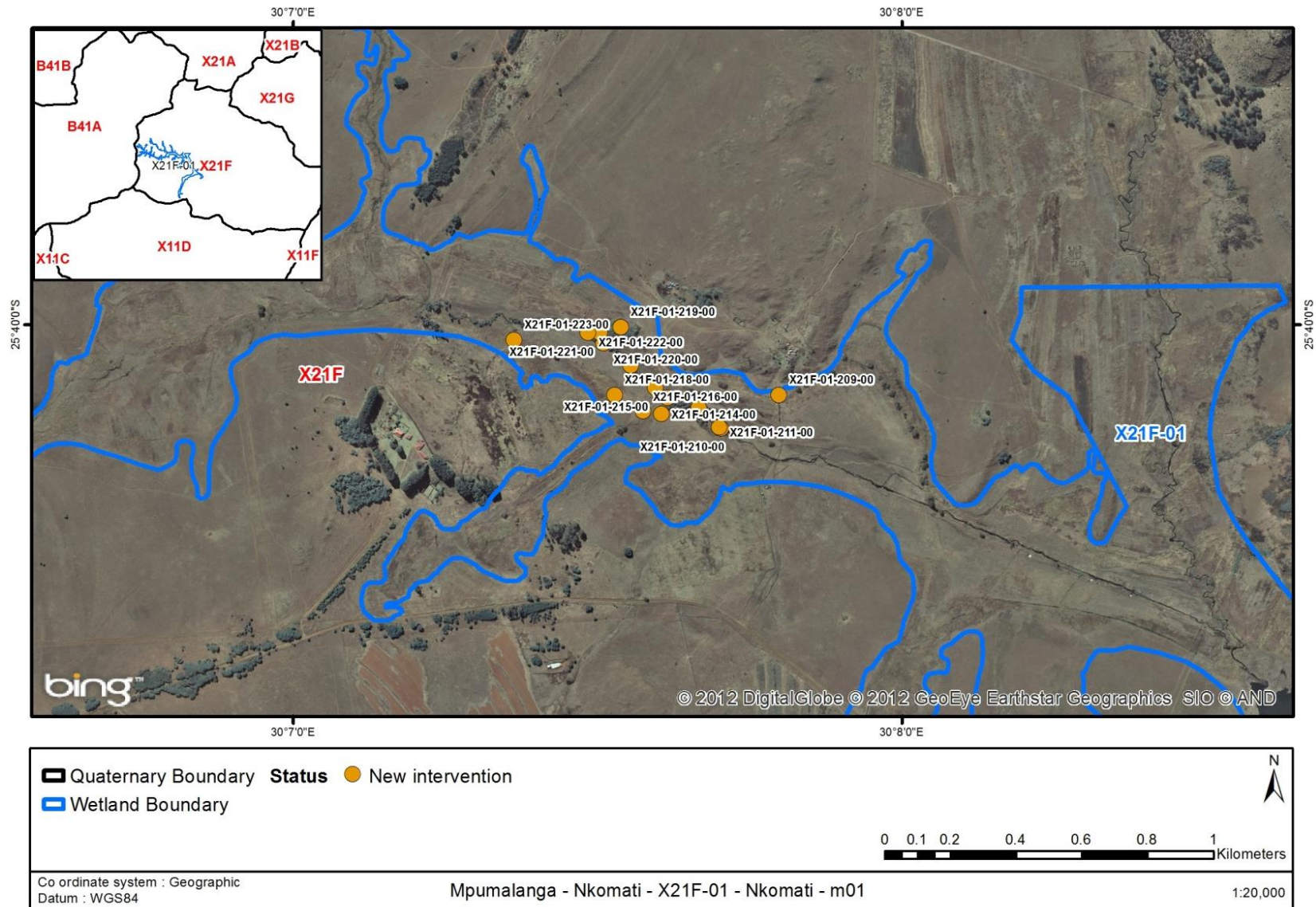


Figure 5: Wetland map, X21F with proposed new wetland interventions indicated

## 4.7 Intervention designs

### 4.7.1 Intervention: X21F-01-209-00

<b>Designer</b>	C. Blaauw
<b>Design Date</b>	December 2013
<b>Intervention Description</b>	Rock Masonry and Concrete Road strips
<b>Rehabilitation Objective</b>	<ul style="list-style-type: none"><li>• Secure road traversing wetland area and prevent any future.</li><li>• Spread water across the wetland area to ensure even inundation of wet habitat.</li></ul>
<b>Latitude (D°M'S")</b>	25°40'06.90" S
<b>Longitude (D°M'S")</b>	30°07'47.90" E
<b>Engineering Drawings</b>	X21F-01-209-00



**Figure 6: Intervention site X21F-01-209-00**

#### 4.7.1.1 Bill of quantities X21F-01-209-00

Item	Units	Quantity	Unit Cost	Item Cost
Stone Masonry Road strips	m <sup>3</sup>	88.00	R 5 000.00	R 440,000.00
Concrete Road strips	m <sup>3</sup>	48.00	R 6 000.00	R 288,000.00
Re-Vegetate	m <sup>2</sup>	155.00	R 33	R 5,115.00
<b>Total</b>				<b>R733 115</b>

#### 4.7.1.2 Construction notes

Use rocks where possible as stone masonry and rest concrete roads strips. Apply topsoil to area between strips to allow revegetation.

General construction notes as set out in **Appendix B** apply, along with all construction notes shown on design drawings. The following is guidance for working within an area with soils with high organic matter content.

##### **General:**

- a. Work only in low rainfall periods,
- b. Prevent compaction of the soil,
- c. Prevent draining, drying and desiccation of soil,
- d. Use the general BMP of the WfWet manual for working within wetlands, and
- e. Do not bring in any foreign vegetable matter (e.g. mulch) into the wetland area (especially from alien species).

##### **Entering the wetland:**

- a. Prevent compaction (and thus potential channelling and erosion) of by not driving into the wetland.
- b. However if required to drive into the wetland, then spread the weight of traffic (using walkways, boardwalks, geotextiles etc.). Construction workers and wheelbarrows should use these enforced paths as well.

##### **Excavations (pre-construction):**

- a. Remove soil in the form of sods (20- 40 x20x20cm)
- b. 1<sup>st</sup> sod layer must include the Rhizome layer (20cm intervals might be a bit too thin for *Phragmites*, but then it might be too difficult to work on thicker sods so keep it at 20cm increments).
- c. Cut vegetation short if it will make handling easier. Use cut vegetation as mulch (see next point)

- d. Store soil of different layers in different spots (stockpile soils according to the different soil layers as per the soil profile), in order not to mix layers of profile.
- e. Cover with mulch or cloth (geotextile) and keep at least 40% moisture. If possible, stockpile soils in piles as high as possible (to retain moisture).

**Construction** – maintain moisture (if work continues into wet season make sure stockpiled soil will not be flooded – removes top rhizome layer at least).

### **Post-construction**

- a. Replace sods back into the system in the same order/ layers as to what is naturally occurring (according to the profile). i.e. replace deeper layers 1<sup>st</sup> with rhizospheres layer on top.
- b. Based on type of species make sure the sod is orientated in the original direction in terms of aspect.
- c. If sods are not at 90%+ moisture then peg them with wooden stakes.
- d. Mulch the site (or use cloth/geotextile).
- e. Fence livestock out for at least 2 seasons (or brush pack).
- f. If compaction took place then:
  - i. on flat surfaces, loosen the soil with a fork, and
  - ii. on paths with slopes, put/ create small contour berms.

### **Draining/pumping**

- a. If any draining was done during construction, ensure that no preferential flow takes place in the drain after infilling.
- b. All decanting points should have energy dissipaters

**4.7.2 Intervention: X21F-01-210-00**

<b>Designer</b>	C. Blaauw
<b>Design Date</b>	December 2013
<b>Intervention Description</b>	Rock Masonry Weir
<b>Rehabilitation Objective</b>	Construct stone masonry weir to trap sediment in the channel and raise the water level to rewet surrounding area. The intervention will also create an environment for the water to push back to the toe of the next intervention upstream (head to toe feature) and prevent any lateral head cuts and erosion. This will also prevent vent any more sediment to be deposited downstream.
<b>Latitude (D°M'S")</b>	25°40'10.20" S
<b>Longitude (D°M'S")</b>	30°07'42.20" E
<b>Engineering Drawings</b>	X21F-01-210-00



**Figure 7: Intervention site X21F-01-210-00**

#### 4.7.2.1 Bill of quantities

Item	Units	Quantity	Unit Cost	Item Cost
Stone Masonry Weir	m <sup>3</sup>	96.00	R 5,000.00	R 480 000.00
Gabions	m <sup>3</sup>	5.10	R 3,350.00	R 17 085.00
Re-Vegetate	m <sup>2</sup>	45.00	R 33.00	R 1 485.00
<b>Total</b>				<b>R 498 570</b>

#### 4.7.2.2 Construction notes

Concrete capped gabion road strips adjacent to concrete weir. Use rocks where possible as stone masonry and rest concrete roads strips. Apply topsoil to area between strips to allow revegetation.

General construction notes as set out in **Appendix B** apply, along with all construction notes shown on design drawings. The following is guidance for working within an area with soils with high organic matter content.

##### **General:**

- a. Work only in low rainfall periods,
- b. Prevent compaction of the soil,
- c. Prevent draining, drying and desiccation of soil,
- d. Use the general BMP of the WfWet manual for working within wetlands, and
- e. Do not bring in any foreign vegetable matter (e.g. mulch) into the wetland area (especially from alien species).

##### **Entering the wetland:**

- a. Prevent compaction (and thus potential channelling and erosion) of by not driving into the wetland.
- b. However if required to drive into the wetland, then spread the weight of traffic (using walkways, boardwalks, geotextiles etc.). Construction workers and wheelbarrows should use these enforced paths as well.

##### **Excavations (pre-construction):**

- a. Remove soil in the form of sods (20- 40 x20x20cm)
- b. 1<sup>st</sup> sod layer must include the Rhizome layer (20cm intervals might be a bit too thin for *Phragmites*, but then it might be too difficult to work on thicker sods so keep it at 20cm increments).

- c. Cut vegetation short if it will make handling easier. Use cut vegetation as mulch (see next point)
- d. Store soil of different layers in different spots (stockpile soils according to the different soil layers as per the soil profile), in order not to mix layers of profile.
- e. Cover with mulch or cloth (geotextile) and keep at least 40% moisture. If possible, stockpile soils in piles as high as possible (to retain moisture).

**Construction** – maintain moisture (if work continues into wet season make sure stockpiled soil will not be flooded – removes top rhizome layer at least).

### **Post-construction**

- a. Replace sods back into the system in the same order/ layers as to what is naturally occurring (according to the profile) i.e. replace deeper layers 1<sup>st</sup> with rhizospheres layer on top.
- b. Based on type of species make sure the sod is orientated in the original direction in terms of aspect.
- c. If sods are not at 90%+ moisture then peg them with wooden stakes.
- d. Mulch the site (or use cloth/geotextile).
- e. Fence livestock out for at least 2 seasons (or brush pack).
- f. If compaction took place then:
  - i. on flat surfaces, loosen the soil with a fork, and
  - ii. on paths with slopes, put/ create small contour berms.

### **Draining/pumping**

- a. If any draining was done during construction, ensure that no preferential flow takes place in the drain after infilling.
- b. All decanting points should have energy dissipaters



#### 4.7.3 Intervention: X21F-01-211-00

<b>Designer</b>	C. Blaauw
<b>Design Date</b>	December 2013
<b>Intervention Description</b>	Removal of log-jams in stream
<b>Rehabilitation Objective</b>	Remove log-jams that create an uneven surface contributing towards the increase in channel erosion due to concentrated flow paths. By removing it a more stable environment is established for wetland recovery purposes.
<b>Latitude (D°M'S")</b>	25°40'10.20" S
<b>Longitude (D°M'S")</b>	30°07'42.20" E
<b>Engineering Drawings</b>	X21F-01-211-00



**Figure 8: Intervention site X21F-01-211-00**

#### 4.7.3.1 Bill of quantities

Item	Units	Quantity	Unit Cost	Item Cost
Removal of log-jams in stream	N/A	800.00	R 50.00	R 40 000.00
<b>Total</b>				<b>R 40 000</b>

#### 4.7.3.2 Construction notes

Clear log-jams for approximately 200m upstream GPS reference. Remove from floodplain to prevent re-entry during flood events.

##### **General:**

- a. Work only in low rainfall periods,
- b. Prevent compaction of the soil,
- c. Prevent draining, drying and desiccation of soil,
- d. Use the general BMP of the WfWet manual for working within wetlands, and
- e. Do not bring in any foreign vegetable matter (e.g. mulch) into the wetland area (especially from alien species).

##### **Entering the wetland:**

- a. Prevent compaction (and thus potential channelling and erosion) of by not driving into the wetland.
- b. However if required to drive into the wetland, then spread the weight of traffic (using walkways, boardwalks, geotextiles etc.). Construction workers and wheelbarrows should use these enforced paths as well.

##### **Draining/pumping**

- a. If any draining was done during construction, ensure that no preferential flow takes place in the drain after infilling.
- b. All decanting points should have energy dissipaters

**4.7.4 Intervention: X21F-01-212-00**

<b>Designer</b>	C. Blaauw
<b>Design Date</b>	December 2013
<b>Intervention Description</b>	Stone Masonry Weir
<b>Rehabilitation Objective</b>	Construct stone masonry weir to trap sediment in the channel and raise the water level to rewet surrounding area. The intervention will also create an environment for the water to push back to the toe of the next intervention upstream (head to toe feature) and prevent any lateral head cuts and erosion. This will also prevent vent any more sediment to be deposited downstream.
<b>Latitude (D°M'S")</b>	25°40'08.20" S
<b>Longitude (D°M'S")</b>	30°07'40.00" E
<b>Engineering Drawings</b>	X21F-01-212-00



**Figure 9: Intervention site X21F-01-212-00**

#### 4.7.4.1 Bill of quantities

Item	Units	Quantity	Unit Cost	Item Cost
Stone Masonry Weir	m <sup>3</sup>	96.00	R 5,000.00	R 765,000.00
Gabions	m <sup>3</sup>	5.10	R 3,350.00	R 27,805.00
Re-Vegetate	m <sup>2</sup>	45.00	R 33.00	R 1,485.00
<b>Total</b>				<b>R 794 290</b>

#### 4.7.4.2 Construction notes

General construction notes as set out in **Appendix B** apply, along with all construction notes shown on design drawings. The following is guidance for working within an area with soils with high organic matter content.

##### **General:**

- a. Work only in low rainfall periods,
- b. Prevent compaction of the soil,
- c. Prevent draining, drying and desiccation of soil,
- d. Use the general BMP of the WfWet manual for working within wetlands, and
- e. Do not bring in any foreign vegetable matter (e.g. mulch) into the wetland area (especially from alien species).

##### **Entering the wetland:**

- a. Prevent compaction (and thus potential channelling and erosion) of by not driving into the wetland.
- b. However if required to drive into the wetland, then spread the weight of traffic (using walkways, boardwalks, geotextiles etc.). Construction workers and wheelbarrows should use these enforced paths as well.

##### **Excavations (pre-construction):**

- a. Remove soil in the form of sods (20- 40 x20x20cm)
- b. 1<sup>st</sup> sod layer must include the Rhizome layer (20cm intervals might be a bit too thin for *Phragmites*, but then it might be too difficult to work on thicker sods so keep it at 20cm increments).
- c. Cut vegetation short if it will make handling easier. Use cut vegetation as mulch (see next point)

- d. Store soil of different layers in different spots (stockpile soils according to the different soil layers as per the soil profile), in order not to mix layers of profile.
- e. Cover with mulch or cloth (geotextile) and keep at least 40% moisture. If possible, stockpile soils in piles as high as possible (to retain moisture).

**Construction** – maintain moisture (if work continues into wet season make sure stockpiled soil will not be flooded – removes top rhizome layer at least).

### **Post-construction**

- a. Replace sods back into the system in the same order/ layers as to what is naturally occurring (according to the profile). i.e. replace deeper layers 1<sup>st</sup> with rhizospheres layer on top.
- b. Based on type of species make sure the sod is orientated in the original direction in terms of aspect.
- c. If sods are not at 90%+ moisture then peg them with wooden stakes.
- d. Mulch the site (or use cloth/geotextile).
- e. Fence livestock out for at least 2 seasons (or brush pack).
- f. If compaction took place then:
  - i. on flat surfaces, loosen the soil with a fork, and
  - ii. on paths with slopes, put/ create small contour berms.

### **Draining/pumping**

- a. If any draining was done during construction, ensure that no preferential flow takes place in the drain after infilling.
- b. All decanting points should have energy dissipaters

#### 4.7.6 Intervention: X21F-01-213-00

<b>Designer</b>	C. Blaauw
<b>Design Date</b>	December 2013
<b>Intervention Description</b>	CCA Poles River Crossing (Walkway)
<b>Rehabilitation Objective</b>	<ul style="list-style-type: none"> <li>• Provide a safe and secure means for the local people to travel across an artificial channel area.</li> <li>• Prevent any future erosion.</li> </ul>
<b>Latitude (D°M'S")</b>	25°40'07.20"
<b>Longitude (D°M'S")</b>	30°07'36.90"
<b>Engineering Drawings</b>	X21F-01-213-00



**Figure 10: Intervention site X21F-01-213-00**

#### 4.7.6.1 Bill of quantities

Item	Units	Quantity	Unit Cost	Item Cost
CCA Poles River Crossing (Walkway)	m	26.40	R 12,500.00	R 330,000.00
Concrete	m <sup>3</sup>	2.50	R 6,000.00	R 15,000.00
<b>Total</b>				<b>R 345 000</b>

#### 4.7.6.2 Construction notes

All poles to be CCA treated with end caps “gang nails”. Natural ground level ends to be sloped to top of walkway. All connections to be with 12mm diameter threaded rods, oversize washers and nyloc nuts and recesses into wood. All poles to be treated with water base varnish which is UV and water resistant. All connections to be 1.5 x diameter from the end.

#### 4.7.7 Intervention: X21F-01-214-00

<b>Designer</b>	C. Blaauw
<b>Design Date</b>	December 2013
<b>Intervention Description</b>	Earth Structures (Berms) and revegetate
<b>Rehabilitation Objective</b>	Construct berms to raise the water table in the artificial channel and rehydrate the wetland area in and adjacent to the drainage channel. Also to prevent further channel incision.
<b>Latitude (D°M'S")</b>	25°40'08.80" S
<b>Longitude (D°M'S")</b>	30°07'36.30" E
<b>Engineering Drawings</b>	X21F-01-214-00



**Figure 11: Intervention site X21F-01-214-00**



#### 4.7.7.1 Bill of quantities

Item	Units	Quantity	Unit Cost	Item Cost
Earth Structures (Berms)	m <sup>3</sup>	32.00	R 850.00	R 27,200.00
Re-Vegetate	m <sup>2</sup>	55.00	R 33	R 1,815.00
<b>Total</b>				<b>R 29 015</b>

#### 4.7.7.2 Construction notes

General construction notes as set out in **Appendix B** apply, along with all construction notes shown on design drawings. The following is guidance for working within an area with soils with high organic matter content.

##### **General:**

- a. Work only in low rainfall periods,
- b. Prevent compaction of the soil,
- c. Prevent draining, drying and desiccation of soil,
- d. Use the general BMP of the WfWet manual for working within wetlands, and
- e. Do not bring in any foreign vegetable matter (e.g. mulch) into the wetland area (especially from alien species).

##### **Entering the wetland:**

- a. Prevent compaction (and thus potential channelling and erosion) of by not driving into the wetland.
- b. However if required to drive into the wetland, then spread the weight of traffic (using walkways, boardwalks, geotextiles etc.). Construction workers and wheelbarrows should use these enforced paths as well.

##### **Excavations (pre-construction):**

- a. Remove soil in the form of sods (20- 40 x20x20cm)
- b. 1<sup>st</sup> sod layer must include the Rhizome layer (20cm intervals might be a bit too thin for *Phragmites*, but then it might be too difficult to work on thicker sods so keep it at 20cm increments).
- c. Cut vegetation short if it will make handling easier. Use cut vegetation as mulch (see next point)
- d. Store soil of different layers in different spots (stockpile soils according to the different soil layers as per the soil profile), in order not to mix layers of profile.

- e. Cover with mulch or cloth (geotextile) and keep at least 40% moisture. If possible, stockpile soils in piles as high as possible (to retain moisture).

**Construction** – maintain moisture (if work continues into wet season make sure stockpiled soil will not be flooded – removes top rhizome layer at least).

#### **Post-construction**

- a. Replace sods back into the system in the same order/ layers as to what is naturally occurring (according to the profile) i.e. replace deeper layers 1<sup>st</sup> with rhizospheres layer on top.
- b. Based on type of species make sure the sod is orientated in the original direction in terms of aspect.
- c. If sods are not at 90%+ moisture then peg them with wooden stakes.
- d. Mulch the site (or use cloth/geotextile).
- e. Fence livestock out for at least 2 seasons (or brush pack).
- f. If compaction took place then:
  - i. on flat surfaces, loosen the soil with a fork, and
  - ii. on paths with slopes, put/ create small contour berms.

#### **Draining/pumping**

- a. If any draining was done during construction, ensure that no preferential flow takes place in the drain after infilling.
- b. All decanting points should have energy dissipaters

#### 4.7.8 Intervention: X21F-01-215-00

<b>Designer</b>	C. Blaauw
<b>Design Date</b>	December 2013
<b>Intervention Description</b>	Gabion weir
<b>Rehabilitation Objective</b>	Construct stone masonry weir to trap sediment in the channel and raise the water level to rewet surrounding area. The intervention will also create an environment for the water to push back to the toe of the next intervention upstream (head to toe feature) and prevent any lateral head cuts and erosion. This will also prevent vent any more sediment to be deposited downstream.
<b>Latitude (D°M'S")</b>	25°40'06.20"S
<b>Longitude (D°M'S")</b>	30°07'35.70"E
<b>Engineering Drawings</b>	X21F-01-215-00



**Figure 12: Intervention site X21F-01-215-00**

#### 4.7.8.1 Bill of quantities

Item	Units	Quantity	Unit Cost	Item Cost
Gabion weir	m3	152.50	R 3,350.00	R 510,875.00
Re-Vegetate	m2	45.00	R 33	R 1,485.00
<b>Total</b>				<b>R 512 360</b>

#### 4.7.8.2 Construction notes

Spillway could possibly be increased later on (Freeboard reduced by 0.5m).

General construction notes as set out in **Appendix B** apply, along with all construction notes shown on design drawings. The following is guidance for working within an area with soils with high organic matter content.

##### **General:**

- a. Work only in low rainfall periods,
- b. Prevent compaction of the soil,
- c. Prevent draining, drying and desiccation of soil,
- d. Use the general BMP of the WfWet manual for working within wetlands, and
- e. Do not bring in any foreign vegetable matter (e.g. mulch) into the wetland area (especially from alien species).

##### **Entering the wetland:**

- a. Prevent compaction (and thus potential channelling and erosion) of by not driving into the wetland.
- b. However if required to drive into the wetland, then spread the weight of traffic (using walkways, boardwalks, geotextiles etc.). Construction workers and wheelbarrows should use these enforced paths as well.

##### **Excavations (pre-construction):**

- a. Remove soil in the form of sods (20- 40 x20x20cm)
- b. 1<sup>st</sup> sod layer must include the Rhizome layer (20cm intervals might be a bit too thin for *Phragmites*, but then it might be too difficult to work on thicker sods so keep it at 20cm increments).
- c. Cut vegetation short if it will make handling easier. Use cut vegetation as mulch (see next point)
- d. Store soil of different layers in different spots (stockpile soils according to the different soil layers as per the soil profile), in order not to mix layers of profile.

- e. Cover with mulch or cloth (geotextile) and keep at least 40% moisture. If possible, stockpile soils in piles as high as possible (to retain moisture).

**Construction** – maintain moisture (if work continues into wet season make sure stockpiled soil will not be flooded – removes top rhizome layer at least).

### **Post-construction**

- a. Replace sods back into the system in the same order/ layers as to what is naturally occurring (according to the profile). i.e. replace deeper layers 1<sup>st</sup> with rhizospheres layer on top.
- b. Based on type of species make sure the sod is orientated in the original direction in terms of aspect.
- c. If sods are not at 90%+ moisture then peg them with wooden stakes.
- d. Mulch the site (or use cloth/geotextile).
- e. Fence livestock out for at least 2 seasons (or brush pack).
- f. If compaction took place then:
  - i. on flat surfaces, loosen the soil with a fork, and
  - ii. on paths with slopes, put/ create small contour berms.

### **Draining/pumping**

- a. If any draining was done during construction, ensure that no preferential flow takes place in the drain after infilling.
- b. All decanting points should have energy dissipaters

**4.7.9 Intervention: X21F-01-216-00**

<b>Designer</b>	C. Blaauw
<b>Design Date</b>	December 2013
<b>Intervention Description</b>	Earth Structures (Berms) and revegetate
<b>Rehabilitation Objective</b>	Construct berms to raise the water table in the artificial channel and rehydrate the wetland area in and adjacent to the drainage channel. Also to prevent further channel incision.
<b>Latitude (D°M'S")</b>	25°40'08.50" S
<b>Longitude (D°M'S")</b>	30°07'34.50" E
<b>Engineering Drawings</b>	X21F-01-216-00



**Figure 13: Intervention site X21F-01-216-00**

#### 4.7.9.1 Bill of quantities

Item	Units	Quantity	Unit Cost	Item Cost
Earth Structures (Berms)	m3	120.00	R 850.00	R 102,000.00
Re-Vegetate	m2	325.00	R 33	R 10,725.00
<b>Total</b>				<b>R 112 725</b>

#### 4.7.9.2 Construction notes

General construction notes as set out in **Appendix B** apply, along with all construction notes shown on design drawings. The following is guidance for working within an area with soils with high organic matter content.

##### **General:**

- a. Work only in low rainfall periods,
- b. Prevent compaction of the soil,
- c. Prevent draining, drying and desiccation of soil,
- d. Use the general BMP of the WfWet manual for working within wetlands, and
- e. Do not bring in any foreign vegetable matter (e.g. mulch) into the wetland area (especially from alien species).

##### **Entering the wetland:**

- a. Prevent compaction (and thus potential channelling and erosion) of by not driving into the wetland.
- b. However if required to drive into the wetland, then spread the weight of traffic (using walkways, boardwalks, geotextiles etc.). Construction workers and wheelbarrows should use these enforced paths as well.

##### **Excavations (pre-construction):**

- a. Remove soil in the form of sods (20- 40 x20x20cm)
- b. 1<sup>st</sup> sod layer must include the Rhizome layer (20cm intervals might be a bit too thin for *Phragmites*, but then it might be too difficult to work on thicker sods so keep it at 20cm increments).
- c. Cut vegetation short if it will make handling easier. Use cut vegetation as mulch (see next point)
- d. Store soil of different layers in different spots (stockpile soils according to the different soil layers as per the soil profile), in order not to mix layers of profile.

- e. Cover with mulch or cloth (geotextile) and keep at least 40% moisture. If possible, stockpile soils in piles as high as possible (to retain moisture).

**Construction** – maintain moisture (if work continues into wet season make sure stockpiled soil will not be flooded – removes top rhizome layer at least).

#### **Post-construction**

- a. Replace sods back into the system in the same order/ layers as to what is naturally occurring (according to the profile). i.e. replace deeper layers 1<sup>st</sup> with rhizospheres layer on top.
- b. Based on type of species make sure the sod is orientated in the original direction in terms of aspect.
- c. If sods are not at 90%+ moisture then peg them with wooden stakes.
- d. Mulch the site (or use cloth/geotextile).
- e. Fence livestock out for at least 2 seasons (or brush pack).
- f. If compaction took place then:
  - i. on flat surfaces, loosen the soil with a fork, and
  - ii. on paths with slopes, put/ create small contour berms.

#### **Draining/pumping**

- a. If any draining was done during construction, ensure that no preferential flow takes place in the drain after infilling.
- b. All decanting points should have energy dissipaters



**4.7.10 Intervention: X21F-01-217-00**

<b>Designer</b>	C. Blaauw
<b>Design Date</b>	December 2013
<b>Intervention Description</b>	Stone Masonry Weir
<b>Rehabilitation Objective</b>	Construct stone masonry weir to trap sediment in the channel and raise the water level to rewet surrounding area. The intervention will also create an environment for the water to push back to the toe of the next intervention upstream (head to toe feature) and prevent any lateral head cuts and erosion. This will also prevent vent any more sediment to be deposited downstream.
<b>Latitude (D°M'S")</b>	25°40'04.00"S
<b>Longitude (D°M'S")</b>	30°07'03.33"E
<b>Engineering Drawings</b>	X21F-01-217-00



**Figure 14: Intervention site X21F-01-217-00**

#### 4.7.10.1 Bill of quantities

Item	Units	Quantity	Unit Cost	Item Cost
Stone Masonry Weir	m <sup>3</sup>	130.50	R 5,000.00	R 652,500.00
Gabions	m <sup>3</sup>	6.00	R 3,350.00	R 20,100.00
Re-Vegetate	m <sup>2</sup>	45.00	R 33.00	R 1,485.00
<b>Total</b>				<b>R674 085</b>

#### 4.7.10.2 Construction notes

General construction notes as set out in **Appendix B** apply, along with all construction notes shown on design drawings. The following is guidance for working within an area with soils with high organic matter content.

##### **General:**

- a. Work only in low rainfall periods,
- b. Prevent compaction of the soil,
- c. Prevent draining, drying and desiccation of soil,
- d. Use the general BMP of the WfWet manual for working within wetlands, and
- e. Do not bring in any foreign vegetable matter (e.g. mulch) into the wetland area (especially from alien species).

##### **Entering the wetland:**

- a. Prevent compaction (and thus potential channelling and erosion) of by not driving into the wetland.
- b. However if required to drive into the wetland, then spread the weight of traffic (using walkways, boardwalks, geotextiles etc.). Construction workers and wheelbarrows should use these enforced paths as well.

##### **Excavations (pre-construction):**

- a. Remove soil in the form of sods (20- 40 x20x20cm)
- b. 1<sup>st</sup> sod layer must include the Rhizome layer (20cm intervals might be a bit too thin for *Phragmites*, but then it might be too difficult to work on thicker sods so keep it at 20cm increments).
- c. Cut vegetation short if it will make handling easier. Use cut vegetation as mulch (see next point)

- d. Store soil of different layers in different spots (stockpile soils according to the different soil layers as per the soil profile), in order not to mix layers of profile.
- e. Cover with mulch or cloth (geotextile) and keep at least 40% moisture. If possible, stockpile soils in piles as high as possible (to retain moisture).

**Construction** – maintain moisture (if work continues into wet season make sure stockpiled soil will not be flooded – removes top rhizome layer at least).

### **Post-construction**

- a. Replace sods back into the system in the same order/ layers as to what is naturally occurring (according to the profile) i.e. replace deeper layers 1<sup>st</sup> with rhizospheres layer on top.
- b. Based on type of species make sure the sod is orientated in the original direction in terms of aspect.
- c. If sods are not at 90%+ moisture then peg them with wooden stakes.
- d. Mulch the site (or use cloth/geotextile).
- e. Fence livestock out for at least 2 seasons (or brush pack).
- f. If compaction took place then:
  - i. on flat surfaces, loosen the soil with a fork, and
  - ii. on paths with slopes, put/ create small contour berms.

### **Draining/pumping**

- a. If any draining was done during construction, ensure that no preferential flow takes place in the drain after infilling.
- b. All decanting points should have energy dissipaters

**4.7.11 Intervention: X21F-01-218-00**

<b>Designer</b>	C. Blaauw
<b>Design Date</b>	December 2013
<b>Intervention Description</b>	Earth Works & Earth Structures (Berms) and revegetate
<b>Rehabilitation Objective</b>	Construct berms to raise the water table in the artificial channel and rehydrate the wetland area in and adjacent to the drainage channel. Also to prevent further channel incision.
<b>Latitude (D°M'S")</b>	25°40'06.90" S
<b>Longitude (D°M'S")</b>	30°07'31.70" E
<b>Engineering Drawings</b>	X21F-01-218-00



**Figure 15: Intervention site X21F-01-218-00**

#### 4.7.11.1 Bill of quantities

Item	Units	Quantity	Unit Cost	Item Cost
Earth Structures (Berms)	m <sup>3</sup>	5.00	R 850.00	R 4,250.00
Earth works	m <sup>3</sup>	250.00	R 350.00	R 87,500.00
Re-Vegetate	m <sup>2</sup>	2160.00	R 33	R 71,280.00
<b>Total</b>				<b>R163 030</b>

#### 4.7.11.2 Construction notes

General construction notes as set out in **Appendix B** apply, along with all construction notes shown on design drawings. The following is guidance for working within an area with soils with high organic matter content.

##### **General:**

- a. Work only in low rainfall periods,
- b. Prevent compaction of the soil,
- c. Prevent draining, drying and desiccation of soil,
- d. Use the general BMP of the WfWet manual for working within wetlands, and
- e. Do not bring in any foreign vegetable matter (e.g. mulch) into the wetland area (especially from alien species).

##### **Entering the wetland:**

- a. Prevent compaction (and thus potential channelling and erosion) of by not driving into the wetland.
- b. However if required to drive into the wetland, then spread the weight of traffic (using walkways, boardwalks, geotextiles etc.). Construction workers and wheelbarrows should use these enforced paths as well.

##### **Excavations (pre-construction):**

- a. Remove soil in the form of sods (20- 40 x20x20cm)
- b. 1<sup>st</sup> sod layer must include the Rhizome layer (20cm intervals might be a bit too thin for *Phragmites*, but then it might be too difficult to work on thicker sods so keep it at 20cm increments).
- c. Cut vegetation short if it will make handling easier. Use cut vegetation as mulch (see next point)

- d. Store soil of different layers in different spots (stockpile soils according to the different soil layers as per the soil profile), in order not to mix layers of profile.
- e. Cover with mulch or cloth (geotextile) and keep at least 40% moisture. If possible, stockpile soils in piles as high as possible (to retain moisture).

**Construction** – maintain moisture (if work continues into wet season make sure stockpiled soil will not be flooded – removes top rhizome layer at least).

### **Post-construction**

- a. Replace sods back into the system in the same order/ layers as to what is naturally occurring (according to the profile) i.e. replace deeper layers 1<sup>st</sup> with rhizospheres layer on top.
- b. Based on type of species make sure the sod is orientated in the original direction in terms of aspect.
- c. If sods are not at 90%+ moisture then peg them with wooden stakes.
- d. Mulch the site (or use cloth/geotextile).
- e. Fence livestock out for at least 2 seasons (or brush pack).
- f. If compaction took place then:
  - i. on flat surfaces, loosen the soil with a fork, and
  - ii. on paths with slopes, put/ create small contour berms.

### **Draining/pumping**

- a. If any draining was done during construction, ensure that no preferential flow takes place in the drain after infilling.
- b. All decanting points should have energy dissipaters

**4.7.12 Intervention: X21F-01-219-00**

<b>Designer</b>	C. Blaauw
<b>Design Date</b>	December 2013
<b>Intervention Description</b>	Earth Works (Cut & Fill) and Re-vegetate
<b>Rehabilitation Objective</b>	Raise the water table in the artificial channel and rehydrate the wetland area in and adjacent to the drainage channel. Also to prevent further channel incision.
<b>Latitude (D°M'S")</b>	25°40'00.20"
<b>Longitude (D°M'S")</b>	30°07'32.30"
<b>Engineering Drawings</b>	X21F-01-219-00



**Figure 16: Intervention site X21F-01-219-00**

#### 4.7.12.1 Bill of quantities

Item	Units	Quantity	Unit Cost	Item Cost
Earth works	m <sup>3</sup>	435.00	R 350.00	R 152,250.00
Re-Vegetate	m <sup>2</sup>	5440.00	R 33	R 179,520.00
<b>Total</b>				<b>R 331 770</b>

#### 4.7.12.2 Construction notes

General construction notes as set out in **Appendix B** apply, along with all construction notes shown on design drawings. The following is guidance for working within an area with soils with high organic matter content.

##### **General:**

- a. Work only in low rainfall periods,
- b. Prevent compaction of the soil,
- c. Prevent draining, drying and desiccation of soil,
- d. Use the general BMP of the WfWet manual for working within wetlands, and
- e. Do not bring in any foreign vegetable matter (e.g. mulch) into the wetland area (especially from alien species).

##### **Entering the wetland:**

- a. Prevent compaction (and thus potential channelling and erosion) of by not driving into the wetland.
- b. However if required to drive into the wetland, then spread the weight of traffic (using walkways, boardwalks, geotextiles etc.). Construction workers and wheelbarrows should use these enforced paths as well.

##### **Excavations (pre-construction):**

- a. Remove soil in the form of sods (20- 40 x20x20cm)
- b. 1<sup>st</sup> sod layer must include the Rhizome layer (20cm intervals might be a bit too thin for *Phragmites*, but then it might be too difficult to work on thicker sods so keep it at 20cm increments).
- c. Cut vegetation short if it will make handling easier. Use cut vegetation as mulch (see next point)
- d. Store soil of different layers in different spots (stockpile soils according to the different soil layers as per the soil profile), in order not to mix layers of profile.



- e. Cover with mulch or cloth (geotextile) and keep at least 40% moisture. If possible, stockpile soils in piles as high as possible (to retain moisture).

**Construction** – maintain moisture (if work continues into wet season make sure stockpiled soil will not be flooded – removes top rhizome layer at least).

#### **Post-construction**

- a. Replace sods back into the system in the same order/ layers as to what is naturally occurring (according to the profile) i.e. replace deeper layers 1<sup>st</sup> with rhizospheres layer on top.
- b. Based on type of species make sure the sod is orientated in the original direction in terms of aspect.
- c. If sods are not at 90%+ moisture then peg them with wooden stakes.
- d. Mulch the site (or use cloth/geotextile).
- e. Fence livestock out for at least 2 seasons (or brush pack).
- f. If compaction took place then:
  - i. on flat surfaces, loosen the soil with a fork, and
  - ii. on paths with slopes, put/ create small contour berms.

#### **Draining/pumping**

- a. If any draining was done during construction, ensure that no preferential flow takes place in the drain after infilling.
- b. All decanting points should have energy dissipaters

**4.7.13 Intervention: X21F-01-220-00**

<b>Designer</b>	C. Blaauw
<b>Design Date</b>	December 2013
<b>Intervention Description</b>	Stone Masonry Weir
<b>Rehabilitation Objective</b>	Construct stone masonry weir to trap sediment in the channel and raise the water level to rewet surrounding area. The intervention will also create an environment for the water to push back to the toe of the next intervention upstream (head to toe feature) and prevent any lateral head cuts and erosion. This will also prevent vent any more sediment to be deposited downstream.
<b>Latitude (D°M'S")</b>	25°40'01.80" S
<b>Longitude (D°M'S")</b>	30°07'30.60" E
<b>Engineering Drawings</b>	X21F-01-220-00



**Figure 17: Intervention site X21F-01-220-00**

#### 4.7.13.1 Bill of quantities

Item	Units	Quantity	Unit Cost	Item Cost
Stone Masonry Weir	m <sup>3</sup>	110.30	R 5,000.00	R 551,500.00
Gabions	m <sup>3</sup>	6.00	R 3,350.00	R 20,100.00
Re-Vegetate	m <sup>2</sup>	45.00	R 33.00	R 1,485.00
<b>Total</b>				<b>R573 085</b>

#### 4.7.13.2 Construction notes

General construction notes as set out in **Appendix B** apply, along with all construction notes shown on design drawings. The following is guidance for working within an area with soils with high organic matter content.

##### **General:**

- a. Work only in low rainfall periods,
- b. Prevent compaction of the soil,
- c. Prevent draining, drying and desiccation of soil,
- d. Use the general BMP of the WfWet manual for working within wetlands, and
- e. Do not bring in any foreign vegetable matter (e.g. mulch) into the wetland area (especially from alien species).

##### **Entering the wetland:**

- a. Prevent compaction (and thus potential channelling and erosion) of by not driving into the wetland.
- b. However if required to drive into the wetland, then spread the weight of traffic (using walkways, boardwalks, geotextiles etc.). Construction workers and wheelbarrows should use these enforced paths as well.

##### **Excavations (pre-construction):**

- a. Remove soil in the form of sods (20- 40 x20x20cm)
- b. 1<sup>st</sup> sod layer must include the Rhizome layer (20cm intervals might be a bit too thin for *Phragmites*, but then it might be too difficult to work on thicker sods so keep it at 20cm increments).
- c. Cut vegetation short if it will make handling easier. Use cut vegetation as mulch (see next point)

- d. Store soil of different layers in different spots (stockpile soils according to the different soil layers as per the soil profile), in order not to mix layers of profile.
- e. Cover with mulch or cloth (geotextile) and keep at least 40% moisture. If possible, stockpile soils in piles as high as possible (to retain moisture).

**Construction** – maintain moisture (if work continues into wet season make sure stockpiled soil will not be flooded – removes top rhizome layer at least).

### **Post-construction**

- a. Replace sods back into the system in the same order/ layers as to what is naturally occurring (according to the profile) i.e. replace deeper layers 1<sup>st</sup> with rhizospheres layer on top.
- b. Based on type of species make sure the sod is orientated in the original direction in terms of aspect.
- c. If sods are not at 90%+ moisture then peg them with wooden stakes.
- d. Mulch the site (or use cloth/geotextile).
- e. Fence livestock out for at least 2 seasons (or brush pack).
- f. If compaction took place then:
  - i. on flat surfaces, loosen the soil with a fork, and
  - ii. on paths with slopes, put/ create small contour berms.

### **Draining/pumping**

- a. If any draining was done during construction, ensure that no preferential flow takes place in the drain after infilling.
- b. All decanting points should have energy dissipaters

**4.7.14 Intervention: X21F-01-221-00**

<b>Designer</b>	C. Blaauw
<b>Design Date</b>	December 2013
<b>Intervention Description</b>	Earth Structures Works (Earth Plugs) and Re-vegetate
<b>Rehabilitation Objective</b>	Construct plugs to raise the water table in the artificial channel and rehydrate the wetland area in and adjacent to the drainage channel. Also to prevent further channel incision.
<b>Latitude (D°M'S")</b>	25°40'00.80" S
<b>Longitude (D°M'S")</b>	30°07'30.20" E
<b>Engineering Drawings</b>	X21F-01-221-00



**Figure 18: Intervention site X21F-01-221-00**

#### 4.7.14.1 Bill of quantities

Item	Units	Quantity	Unit Cost	Item Cost
Earth Structures (Berms)	m <sup>3</sup>	5.95	R 850.00	R 5,057.50
Re-Vegetate	m <sup>2</sup>	45.00	R 33	R 1,485.00
<b>Total</b>				<b>R 6542. 50</b>

#### 4.7.14.2 Construction notes

General construction notes as set out in **Appendix B** apply, along with all construction notes shown on design drawings. The following is guidance for working within an area with soils with high organic matter content.

##### **General:**

- a. Work only in low rainfall periods,
- b. Prevent compaction of the soil,
- c. Prevent draining, drying and desiccation of soil,
- d. Use the general BMP of the WfWet manual for working within wetlands, and
- e. Do not bring in any foreign vegetable matter (e.g. mulch) into the wetland area (especially from alien species).

##### **Entering the wetland:**

- a. Prevent compaction (and thus potential channelling and erosion) of by not driving into the wetland.
- b. However if required to drive into the wetland, then spread the weight of traffic (using walkways, boardwalks, geotextiles etc.). Construction workers and wheelbarrows should use these enforced paths as well.

##### **Excavations (pre-construction):**

- a. Remove soil in the form of sods (20- 40 x20x20cm)
- b. 1<sup>st</sup> sod layer must include the Rhizome layer (20cm intervals might be a bit too thin for *Phragmites*, but then it might be too difficult to work on thicker sods so keep it at 20cm increments).
- c. Cut vegetation short if it will make handling easier. Use cut vegetation as mulch (see next point)
- d. Store soil of different layers in different spots (stockpile soils according to the different soil layers as per the soil profile), in order not to mix layers of profile.

- e. Cover with mulch or cloth (geotextile) and keep at least 40% moisture. If possible, stockpile soils in piles as high as possible (to retain moisture).

**Construction** – maintain moisture (if work continues into wet season make sure stockpiled soil will not be flooded – removes top rhizome layer at least).

#### **Post-construction**

- a. Replace sods back into the system in the same order/ layers as to what is naturally occurring (according to the profile) i.e. replace deeper layers 1<sup>st</sup> with rhizospheres layer on top.
- b. Based on type of species make sure the sod is orientated in the original direction in terms of aspect.
- c. If sods are not at 90%+ moisture then peg them with wooden stakes.
- d. Mulch the site (or use cloth/geotextile).
- e. Fence livestock out for at least 2 seasons (or brush pack).
- f. If compaction took place then:
  - i. on flat surfaces, loosen the soil with a fork, and
  - ii. on paths with slopes, put/ create small contour berms.

#### **Draining/pumping**

- a. If any draining was done during construction, ensure that no preferential flow takes place in the drain after infilling.
- b. All decanting points should have energy dissipaters

**4.7.15 Intervention: X21F-01-222-00**

<b>Designer</b>	C. Blaauw
<b>Design Date</b>	December 2013
<b>Intervention Description</b>	Stone Masonry Weir
<b>Rehabilitation Objective</b>	Construct stone masonry weir to trap sediment in the channel and raise the water level to rewet surrounding area. The intervention will also create an environment for the water to push back to the toe of the next intervention upstream (head to toe feature) and prevent any lateral head cuts and erosion. This will also prevent vent any more sediment to be deposited downstream.
<b>Latitude (D°M'S")</b>	25°40'00.80" S
<b>Longitude (D°M'S")</b>	30°07'29.10" E
<b>Engineering Drawings</b>	X21F-01-222-00



**Figure 19: Intervention site X21F-01-222-00**



#### 4.7.15.1 Bill of quantities

Item	Units	Quantity	Unit Cost	Item Cost
Stone Masonry Weir	m <sup>3</sup>	160.10	R 5,000.00	R 800,500.00
Gabions	m <sup>3</sup>	9.30	R 3,350.00	R 31,155.00
Re-Vegetate	m <sup>2</sup>	45.00	R 33.00	R 1,485.00
<b>Total</b>				<b>R833 140</b>

#### 4.7.15.2 Construction notes

General construction notes as set out in **Appendix B** apply, along with all construction notes shown on design drawings. The following is guidance for working within an area with soils with high organic matter content.

##### **General:**

- a. Work only in low rainfall periods,
- b. Prevent compaction of the soil,
- c. Prevent draining, drying and desiccation of soil,
- d. Use the general BMP of the WfWet manual for working within wetlands, and
- e. Do not bring in any foreign vegetable matter (e.g. mulch) into the wetland area (especially from alien species).

##### **Entering the wetland:**

- a. Prevent compaction (and thus potential channelling and erosion) of by not driving into the wetland.
- b. However if required to drive into the wetland, then spread the weight of traffic (using walkways, boardwalks, geotextiles etc.). Construction workers and wheelbarrows should use these enforced paths as well.

##### **Excavations (pre-construction):**

- a. Remove soil in the form of sods (20- 40 x20x20cm)
- b. 1<sup>st</sup> sod layer must include the Rhizome layer (20cm intervals might be a bit too thin for *Phragmites*, but then it might be too difficult to work on thicker sods so keep it at 20cm increments).
- c. Cut vegetation short if it will make handling easier. Use cut vegetation as mulch (see next point)

- d. Store soil of different layers in different spots (stockpile soils according to the different soil layers as per the soil profile), in order not to mix layers of profile.
- e. Cover with mulch or cloth (geotextile) and keep at least 40% moisture. If possible, stockpile soils in piles as high as possible (to retain moisture).

**Construction** – maintain moisture (if work continues into wet season make sure stockpiled soil will not be flooded – removes top rhizome layer at least).

### **Post-construction**

- a. Replace sods back into the system in the same order/ layers as to what is naturally occurring (according to the profile) i.e. replace deeper layers 1<sup>st</sup> with rhizospheres layer on top.
- b. Based on type of species make sure the sod is orientated in the original direction in terms of aspect.
- c. If sods are not at 90%+ moisture then peg them with wooden stakes.
- d. Mulch the site (or use cloth/geotextile).
- e. Fence livestock out for at least 2 seasons (or brush pack).
- f. If compaction took place then:
  - i. on flat surfaces, loosen the soil with a fork, and
  - ii. on paths with slopes, put/ create small contour berms.

### **Draining/pumping**

- a. If any draining was done during construction, ensure that no preferential flow takes place in the drain after infilling.
- b. All decanting points should have energy dissipaters

**4.7.16 Intervention: X21F-01-223-00**

<b>Designer</b>	C. Blaauw
<b>Design Date</b>	December 2013
<b>Intervention Description</b>	Earth Works (Cut & Fill) and Re-vegetate
<b>Rehabilitation Objective</b>	Earth works to raise the water table in the artificial channel and rehydrate the wetland area in and adjacent to the drainage channel. Also to prevent further channel incision.
<b>Latitude (D°M'S")</b>	25°40'01.50" S
<b>Longitude (D°M'S")</b>	30°07'21.80" E
<b>Engineering Drawings</b>	X21F-01-223-00



**Figure 20: Intervention site X21F-01-223-00**

#### 4.7.16.1 Bill of quantities

Item	Units	Quantity	Unit Cost	Item Cost
Earth Works Volume	m <sup>3</sup>	55.00	R 350.00	R 19,250.00
Revegetate	m <sup>2</sup>	600.00	R 33.00	R 19,800.00
<b>Total</b>				<b>R 39 050</b>

#### 4.7.16.2 Construction Notes

General construction notes as set out in **Appendix B** apply, along with all construction notes shown on design drawings.

The following is guidance for working within an area with soils with high organic matter content.

##### **General:**

- a. Work only in low rainfall periods,
- b. Prevent compaction of the soil,
- c. Prevent draining, drying and desiccation of soil,
- d. Use the general BMP of the WfWet manual for working within wetlands, and
- e. Do not bring in any foreign vegetable matter (e.g. mulch) into the wetland area (especially from alien species).

##### **Entering the wetland:**

- a. Prevent compaction (and thus potential channelling and erosion) of by not driving into the wetland.
- b. However if required to drive into the wetland, then spread the weight of traffic (using walkways, boardwalks, geotextiles etc.). Construction workers and wheelbarrows should use these enforced paths as well.

##### **Excavations (pre-construction):**

- a. Remove soil in the form of sods (20- 40 x20x20cm)
- b. 1<sup>st</sup> sod layer must include the Rhizome layer (20cm intervals might be a bit too thin for *Phragmites*, but then it might be too difficult to work on thicker sods so keep it at 20cm increments).
- c. Cut vegetation short if it will make handling easier. Use cut vegetation as mulch (see next point)
- d. Store soil of different layers in different spots (stockpile soils according to the different soil layers as per the soil profile), in order not to mix layers of profile.

- e. Cover with mulch or cloth (geotextile) and keep at least 40% moisture. If possible, stockpile soils in piles as high as possible (to retain moisture).

**Construction** – maintain moisture (if work continues into wet season make sure stockpiled soil will not be flooded – removes top rhizome layer at least).

### **Post-construction**

- a. Replace sods back into the system in the same order/ layers as to what is naturally occurring (according to the profile) i.e. replace deeper layers 1<sup>st</sup> with rhizospheres layer on top.
- b. Based on type of species make sure the sod is orientated in the original direction in terms of aspect.
- c. If sods are not at 90%+ moisture then peg them with wooden stakes.
- d. Mulch the site (or use cloth/geotextile).
- e. Fence livestock out for at least 2 seasons (or brush pack).
- f. If compaction took place then:
  - i. on flat surfaces, loosen the soil with a fork, and
  - ii. on paths with slopes, put/ create small contour berms.

### **Draining/pumping**

- a. If any draining was done during construction, ensure that no preferential flow takes place in the drain after infilling.
- b. All decanting points should have energy dissipaters

## 4.8 Construction Environmental Management Plan issues

The proposed rehabilitation is to be undertaken on privately owned land and the project team should access the site and manage the site in accordance with the WfWetlands Best Management Practices and specific requirements of the landowner. The implementation of these interventions must also take into account all relevant provisions of WfWetlands Best Management Practices and the Construction Environmental Management Plan, the recommendations of the approved Basic Assessments and EA for the project. The general construction notes, the Construction phase EMP (CEMP) are included as **Appendix B and Appendix F**.

## 4.9 Wetland management recommendations

The system is currently utilised for livestock grazing, but following the implementation of the rehabilitation activities the system may become inaccessible for livestock. The landowner should consider fencing the wetland and managing livestock access to limit grazing to the winter months.

### 4.10 Baseline M&E data

The collection of baseline information was carried out to show changes in the system associated with the wetland rehabilitation activities.

#### 4.10.1 Erosion problems

The erosional features within the wetland are generally limited to channel incision and are relatively stable, and will therefore not be monitored specifically. If these features were to become unstable at any point, monitoring should be undertaken.

#### 4.10.2 Fixed point photography

In order to provide the ability to visually determine the degree of change within the wetland system photography of the wetland system has been taken prior to the implementation of wetland rehabilitation activities.

Fixed point photographs of each intervention point are included in Annexure A of the Wetland Status Quo Report (**Appendix A** of the Rehabilitation Plan).

#### 4.10.3 Baseline WET-Health data

The assessment of the current level of ecological integrity of the wetland system provides a baseline assessment for comparative assessments that would be carried out for monitoring purposes 3 years after completion of the wetland rehabilitation activities. The following WET-Health information was collected for the wetland (Refer to **Appendix A**):

Wetland	Ha	Hydrology	Geomorphology	Vegetation
---------	----	-----------	---------------	------------

No		Impact Score	Change Score	Impact Score	Change Score	Impact Score	Change Score
1	2182	6.0	-1	2.4	-1	2.0	-1
<b>PES Categories</b>		<b>E</b>	↓	<b>C</b>	↓	<b>C</b>	↓
<b>Wetland Impact Score</b>		<b>3.83</b>					
<b>Wetland PES</b>		<b>C</b>					