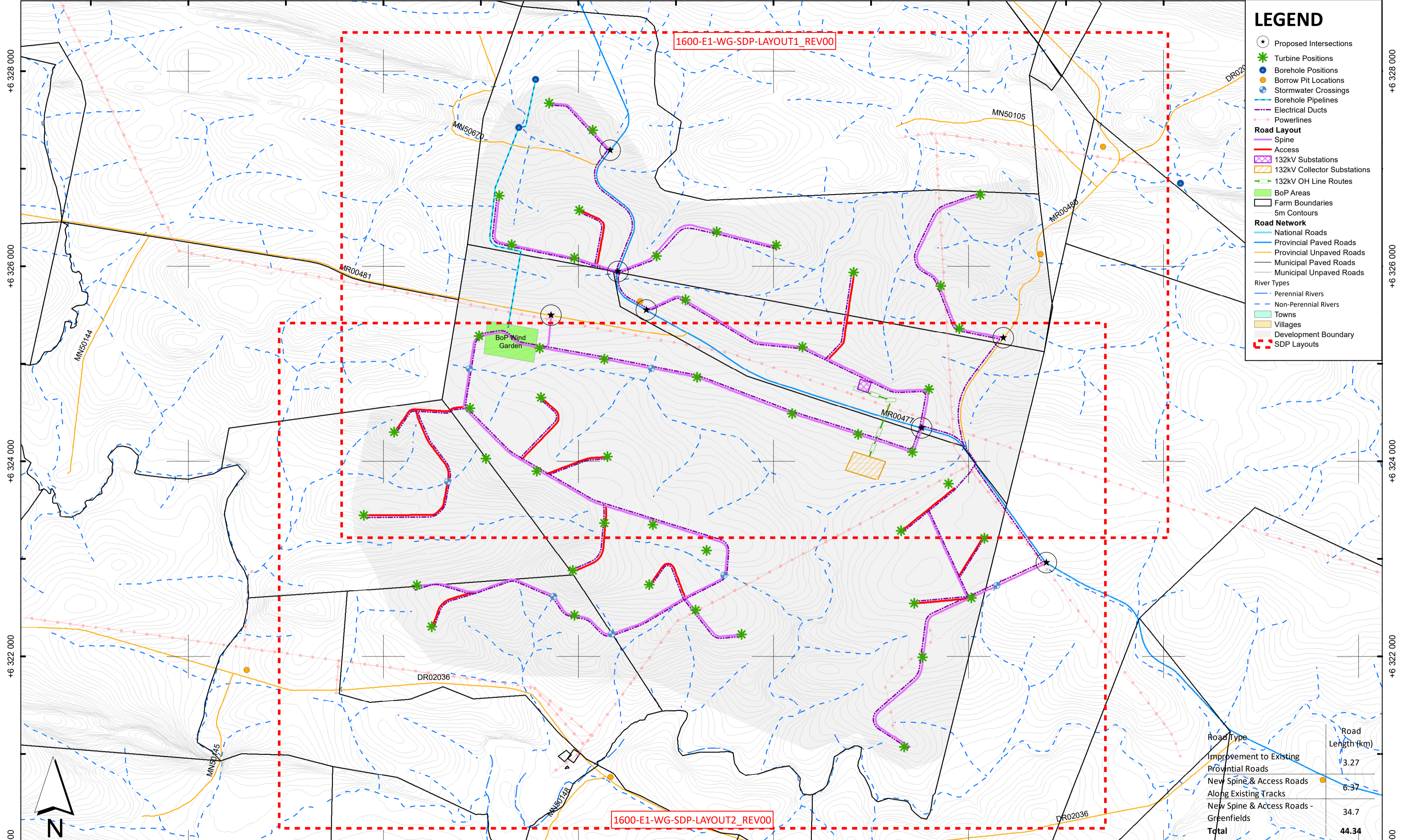


+436 000 +438 000 +440 000 +442 000 +444 000 +446 000 +448 000



LEGEND

- Proposed Intersections
- Turbine Positions
- Borehole Positions
- Borrow Pit Locations
- Stormwater Crossings
- Borehole Pipelines
- Electrical Ducts
- Powerlines

Road Layout

- Spine
- Access
- 132kV Substations
- 132kV Collector Substations
- 132kV OH Line Routes
- BoP Areas
- Farm Boundaries
- 5m Contours

Road Network

- National Roads
- Provincial Paved Roads
- Provincial Unpaved Roads
- Municipal Paved Roads
- Municipal Unpaved Roads

River Types

- Perennial Rivers
- Non-Perennial Rivers

Towns

- Villages
- Development Boundary
- SDP Layouts

UTSHINTSHO / AMENDMENTS

INANI No.	UMHLA DATE	INKCAZA DESCRIPTION	IVUNYELWE APPROVED

SITE DEVELOPMENT PLAN

UMLINGANISELO WOMZOBO OHLISSIWEYO
SCALE ON REDUCED DRAWING

UMLINGANISELO / SCALE
1:25 000
UTM Zone 35

0 0.5 1 km

UMENZI DESIGN

MIN

UMZOB I DRAWN

IVUNYELWE APPROVED

UMHLA DATE

Jan 2021

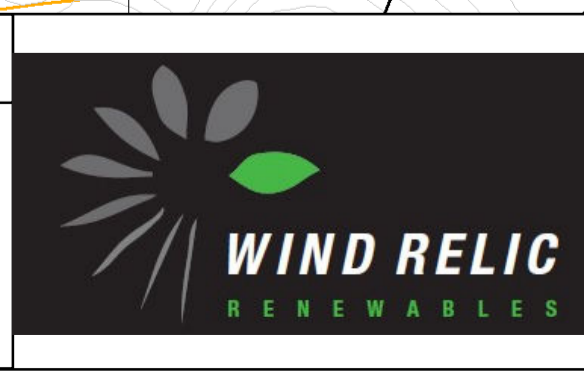
ENGINEERING ADVICE AND SERVICES associated with ULWAZI

73 Heugh Road, Walmer
P.O. Box 13867
Humewood
Port Elizabeth
6013
tel/fax: (041) 581 2421

IVUNYELWE APPROVED

ININELI / ENG.

UMHLA / DATE



IPROJETHI / PROJECT

CHOJE WIND FARM

UMZOBONKCAZA / DWG DESCRIPTION

WIND GARDEN DEVELOPMENT AREA - KEY PLAN

INANI LOMZOBO / DWG.NO.

1600-E1-WG-SDP-KEYPLAN_REV01

Road Type	Road Length (km)
Improvement to Existing Provincial Roads	3.27
New Spine & Access Roads Along Existing Tracks	6.37
New Spine & Access Roads - Greenfields	34.7
Total	44.34

+6 320 000

+6 322 000

+6 326 000

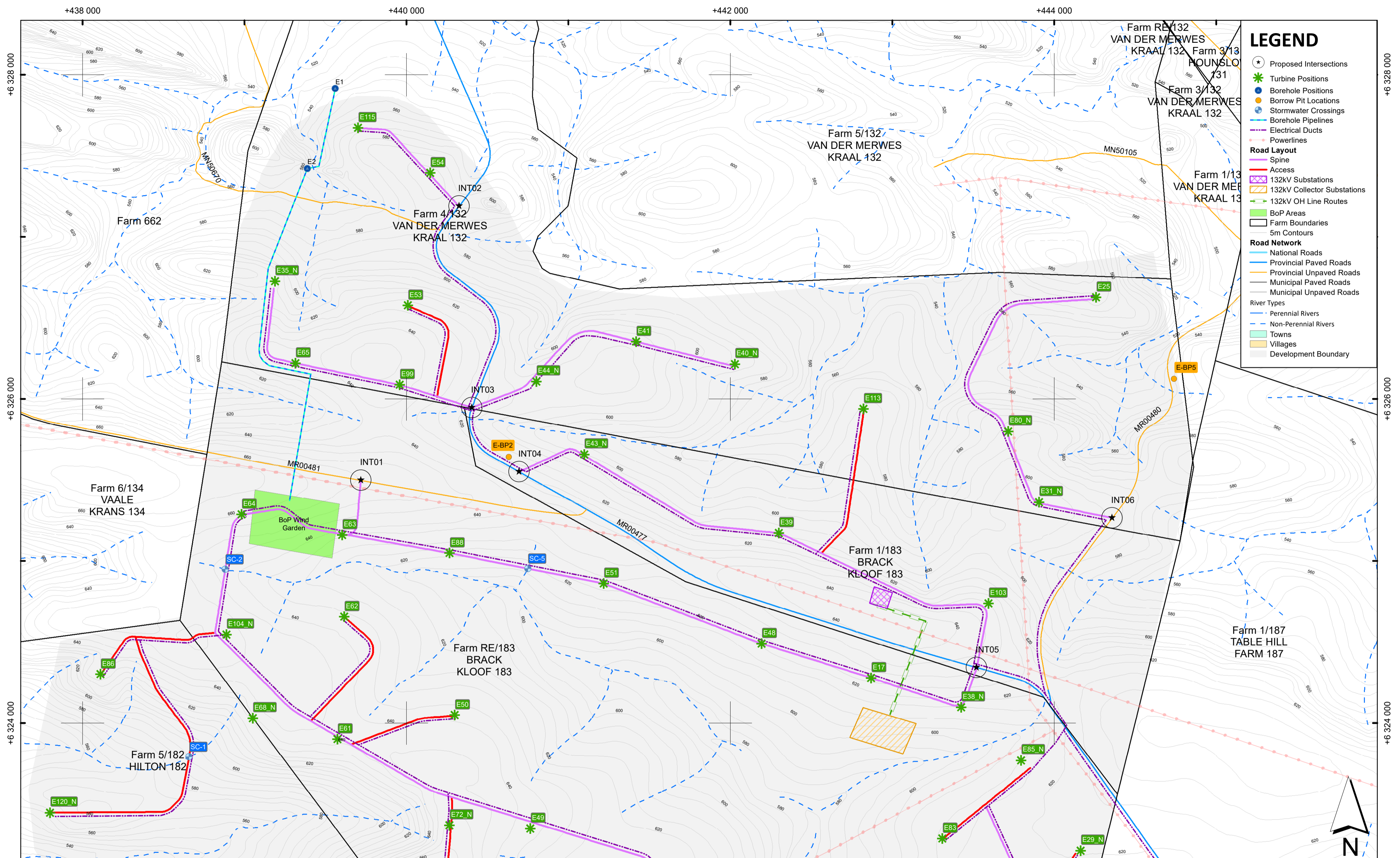
+6 328 000

+6 320 000

+6 322 000

+6 326 000

+6 328 000



UTSHINTSHO / AMENDMENTS

INANI No.	UMHLA DATE	INKCAZA DESCRIPTION	IVUNYELWE APPROVED

SITE DEVELOPMENT PLAN

SHEET 1 OF 2

UMLINGANISOLO WOMZOBO OHLISSIWEYO
SCALE ON REDUCED DRAWING

UMLINGANISOLO / SCALE
1:15 000
UTM Zone 35

0 0.25 0.5 km

UMENZI DESIGN

MIN

UMZOB I DRAWN

IVUNYELWE APPROVED

UMHLA DATE

Feb 2021

ENGINEERING ADVICE AND SERVICES associated with ULWAZI

73 Heugh Road, Walmer
P.O. Box 13867
Humewood
Port Elizabeth
6013
tel/fax: (041) 581 2421

IVUNYELWE APPROVED

INJINELI / ENG.

UMHLA / DATE



IPROJETI / PROJECT

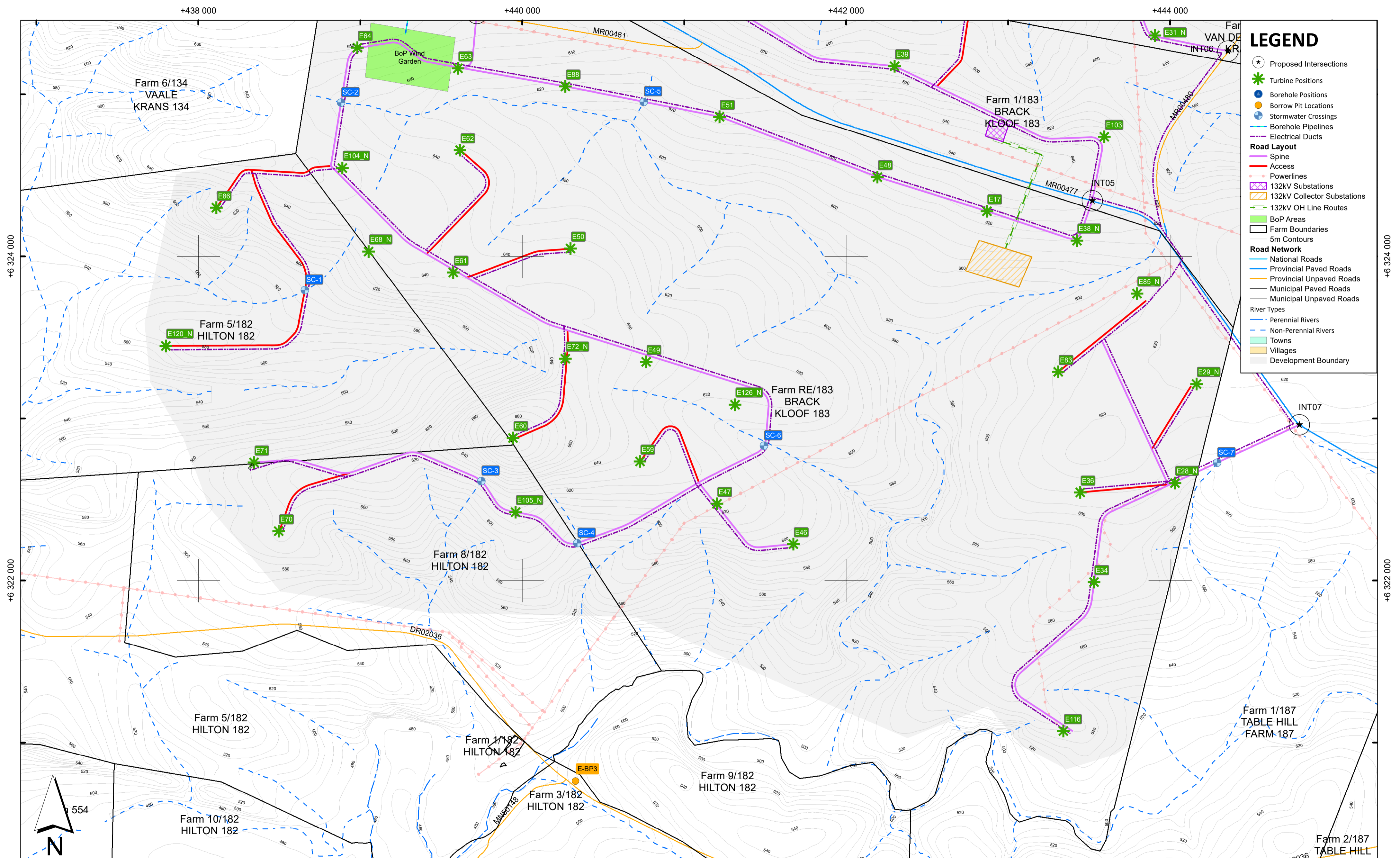
CHOJE WIND FARM

UMZOBONKCAZA / DWG DESCRIPTION

WIND GARDEN DEVELOPMENT AREA - LAYOUT 1

INANI LOMZOBO / DWG.NO.

1600-E1-WG-SDP-LAYOUT1_REV02



LEGEND

- Proposed Intersections
- Turbine Positions
- Borehole Positions
- Borrow Pit Locations
- Stormwater Crossings
- Borehole Pipelines
- Electrical Ducts

Road Layout

- Spine
- Access
- Powerlines
- 132kV Substations
- 132kV Collector Substations
- 132kV OH Line Routes
- BoP Areas
- Farm Boundaries
- 5m Contours

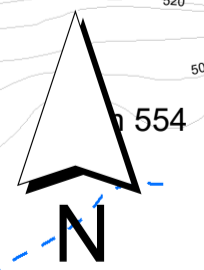
Road Network

- National Roads
- Provincial Paved Roads
- Provincial Unpaved Roads
- Municipal Paved Roads
- Municipal Unpaved Roads

River Types

- Perennial Rivers
- Non-Perennial Rivers

- Towns
- Villages
- Development Boundary



"UMNIKELO" "AS BUILT" NOTES SITE DEVELOPMENT PLAN SHEET 2 OF 2	UTSHINTSHO / AMENDMENTS				UMLINGANISELO WOMZOBO OHLISSIWEYO SCALE ON REDUCED DRAWING UMLINGANISELO / SCALE 1:15 000 <small>UTM Zone 35</small> 	UMNENZI DESIGN UMZOBHI DRAWN IVUNYELWE APPROVED UMHLA DATE Feb 2021	MN JC SM	ENGINEERING ADVICE AND SERVICES associated with ULWAZI 73 Heugh Road, Walmer P.O. Box 13867 Humewood Port Elizabeth 6013 tel/fax: (041) 581 2421		IVUNYELWE APPROVED INJINELI / ENG.	IVUNYELWE APPROVED INJINELI / ENG.		IPROJETI / PROJECT CHOJE WIND FARM
	UMZOBONKCAZA / DWG DESCRIPTION WIND GARDEN DEVELOPMENT AREA - LAYOUT 2	INANI LOMZOBO / DWG.NO. 1600-E1-WG-SDP-LAYOUT2_REV02											