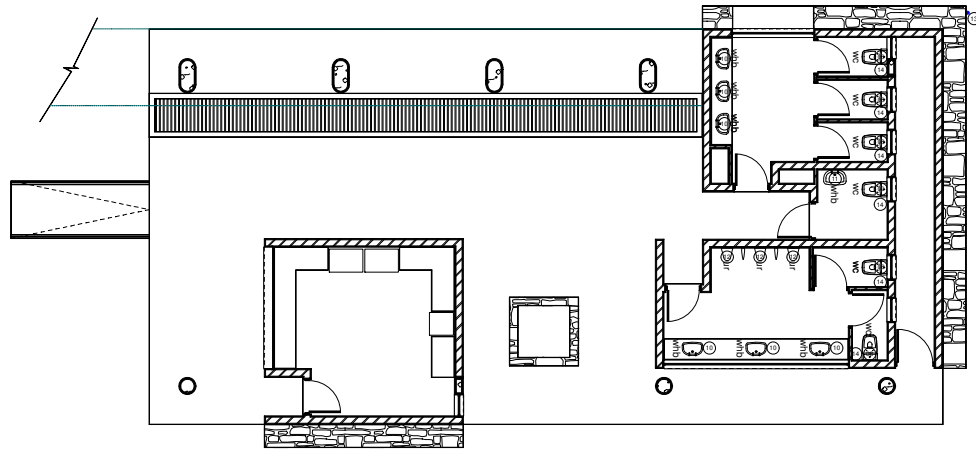
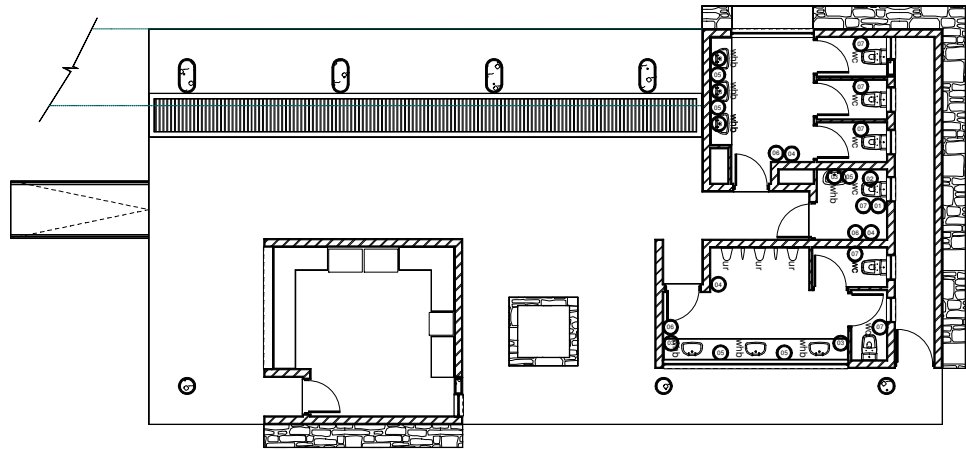


WINDOW NUMBER	w01	w02	w03	w04	rs01
DESCRIPTION	purpose made bronze anodised aluminium frame to sizes shown.	purpose made bronze anodised aluminium frame to sizes shown.	purpose made bronze anodised aluminium frame to sizes shown.	purpose made bronze anodised aluminium frame to sizes shown.	Roll Up Serranda Alusolid Bronze anodised aluminium chain operated roller shutter for opening 3160 x 1190mm high with overhead box 285mm high including canopy cover with endlocked 77 x 2mm thick slats, 75mm wide guides, extruded aluminium T-bar with rubber seal, powder coated ancillary components including end plates, guide rails, etc., slide bolt, fixed to concrete lintel and brick jambs.
WINDOW FURNITURE	as per manufacturer	as per manufacturer	as per manufacturer	as per manufacturer	
GLAZING	laminated safety glass, supplied and installed according to SABS 10400 PART N. sandblast film to be installed on glass	laminated safety glass, supplied and installed according to SABS 10400 PART N. sandblast film to be installed on glass	laminated safety glass, supplied and installed according to SABS 10400 PART N.	laminated safety glass, supplied and installed according to SABS 10400 PART N.	n/a
INT. WINDOW SILL	plaster and paint	plaster and paint	plaster and paint	plaster and paint	plaster and paint
EXT. WINDOW SILL	brick on edge	brick on edge	brick on edge	brick on edge	brick on edge
NO. REQUIRED	6	1	1	1	1
OPENING	top hung	top hung	top hung	top hung	roller shutter

COPYRIGHT RESERVED
 COPYRIGHT NOTICE
 COPYRIGHT © 2017 - Bakopane Architects cc
 Copyright subsists in this drawing. The person or entity whose name appears in the title block of this drawing, is hereby granted a non-exclusive licence to use, display, print and/or reproduce this drawing to the extent necessary to carry out and complete the project described in the title block of this drawing. This licence in respect of the copyright is expressly limited as aforesaid and the person and/or entity referred to above shall not be entitled to grant sub-licences in respect of the copyright in this drawing to any other entity. This licence confers no ownership rights in the copyright vesting in the drawing and this drawing and the copyright subsisting therein will, at all times, remain the property of Bakopane Architects cc. Any unauthorised reproduction, publication, transmission, adaptation and/or inclusion of this drawing in a cinematograph film or television broadcast is an act of copyright infringement which will render the doer of the act liable for civil law copyright infringement and may in certain circumstances render the doer liable to criminal prosecution. Requests and enquiries concerning this drawing and the rights subsisting therein should be addressed to the copyright owner.

No.	Date:	Notes:	Drawn:
Rev 00	05/10/17	concept drawing started	CW



Scale 1:100
 Waterfall Ablutions - sanitary hardware key

Scale 1:100
 Waterfall Ablutions - sanitary fitting key

- sanitary hardware:**
- 01 Franke CNTXBR 32mm diameter satin finished stainless steel cistern back rail (Code: 35912), size 750 x 260mm with Franke Fine Grip surface, plugged and screwed to the wall with stainless steel screws.
 - 02 Franke CNTX70DA 32mm diameter satin finished stainless steel angle bar (Code: 359877), size 618 x 95 x 256mm with Franke Fine Grip surface, plugged and screwed to the wall with stainless steel screws.
 - 03 Franke M600HD 8mm mirrors (Code: 359922), size 600 x 500mm high, concealed thief resistant fixings, plugged and screwed to the wall with stainless steel screws.
 - 04 Franke Chronos BS610 1,25mm thick satin finished stainless steel perforated waste container (Code: 359825), size 410 x 222 x 380mm high with lock, 180 degree radius front and perforated fascia pattern, waste bin capacity of 23 litres, plugged and screwed to the wall with stainless steel screws.
 - 05 Franke Stratos STRX625 1,2/1,5mm thick satin finished stainless steel soap dispenser (Code: 359714), size 120 x 126 x 303mm, plugged and screwed to the wall with stainless steel screws.
 - 06 Franke Stratos STRX600 1,2/1,5mm thick satin finished stainless steel paper towel dispenser (Code: 359700), size 300 x 134 x 305mm high with a capacity of 300-400 towels and cylinder lock with standard Franke key, plugged and screwed to the wall with stainless steel screws.
 - 07 Franke Stratos STRX672 1,2/1,5mm thick satin finished stainless steel double toilet roll dispenser (Code: 359716), size 156 x 141 x 303mm high for 2 rolls maximum 108mm diameter with spindle system and cylinder lock with standard Franke key, plugged and screwed to the wall with stainless steel screws.

- sanitary fittings:**
- 08 Franke Grade 304 18/10 stainless steel HDTX592 heavy duty wall hung pan (Code:356109), size 380 x 550 x 350mm high with wooden slats (Code: 356049), concealed flushing system (elsewhere specified), pan positioned in the centre and back entry 38mm flush pipe inlet, fixed to wall with wall bracket and galvanised mild steel threaded rods, compliant with SABS 1733:2002.
 - 09 Franke Grade 304 18/10 stainless steel HDTX594 heavy duty wall hung pan for disabled persons (Code:356116), size 380 x 700 x 350mm high with wooden slats (Code: 356049), concealed flushing system (elsewhere specified), pan positioned in the centre and back entry 38mm flush pipe inlet, fixed to wall with wall bracket and galvanised mild steel threaded rods, compliant with SABS 1733:2002.
 - 10 Cobra Watertech concealed WC chrome plated Cobratron electronic flushvalve (code: EL-4-213) with non-hold open feature with manual override flushing button, adjustable sensor range, adjustable flushing time with 24 hour autoflush option.
 - 11 Franke 1,8mm Grade 304 18/10 stainless steel HDS heavy duty surround basin (Code:325317), size 390 x 322 x 340mm high with a one piece pressed bowl, pan positioned in the centre, 50mm stainless steel outlet pipe, fixed to wall with 4No. 8mm diameter x 250mm long galvanised mild steel treaded rods.
 - 12 Franke 1,2mm Grade 304 18/10 stainless steel HDWHB heavy duty security type wash hand basin (Code:356672), size 454 x 389 x 600mm high with a one piece pressed bowl size 410 x 300 x 140mm deep, 150mm high splashback, pan positioned in the centre, 50mm stainless steel outlet pipe, fixed to wall with 4No. 8mm diameter x 250mm long galvanised mild steel treaded rods.
 - 13 Franke 1,2mm Grade 304 18/10 stainless steel SBE Barron bowl urinal (Code:333261), size 305 x 245 x 420mm high, pan positioned in the centre with back entry 50mm waste outlet, bolted to wall with 2No. mounting brackets and 4No. M8 raw bolts.
 - 14 Cobra Watertech Ledimo 15mm chrome plated C x C (Compression) underwall stoptap (Code: LO-238-15) with sliding wall flange, manufactured in accordance with SANS 226:2004 Type 1 (BS 5412), stop taps to be installed at each toilet, basin, urinal and sink.

GENERAL NOTES:

1. Check all measurements, levels and details on site before commencement with work.
2. Refer any discrepancies to architect
3. All work to be done in accordance with SANS-10400
4. Nothing to be scaled from drawing; request measurement from architect
5. Architect's & engineer's drawings to be read together
6. Drawing to be used for intention as mentioned in Drawing description.



CLIENT'S SIGNATURE:



DEPARTMENT'S SIGNATURE:



PRINCIPAL AGENT SIGNATURE:

bakopane architects

Proffice Building,
23 Corridor Crescent,
Rooiwal Business Park,
Ben Fleur Ed 11

Post: P.O. Box 543, Erasmussen, 1035
 Tel: 012 653 6251 / 653 6255
 Fax: 086 567 5564
 Email: bakopane@gmail.com

ARCHITECTS SIGNATURE:

TITLE:
**PROPOSED ALTERATIONS
 & ADDITIONS TO TAUNG SKULL
 HERITAGE SITE
 FOR NORTH-WEST RURAL,
 ENVIRONMENTAL &
 AGRICULTURE DEPARTMENT
 PROVINCE OF NORTH-WEST**

DRAWING DESCRIPTION:	ORIGINAL	A1
window schedule	DRG. SIZE	
sanitary fittings and hardware	SCALE: 1:100	0
	REV.	