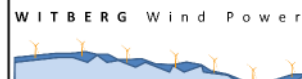


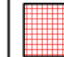


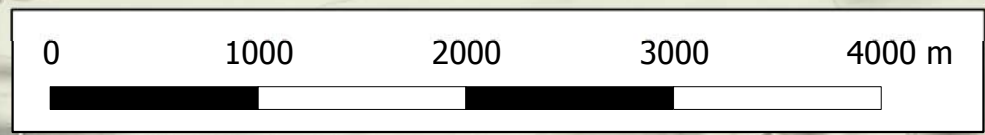
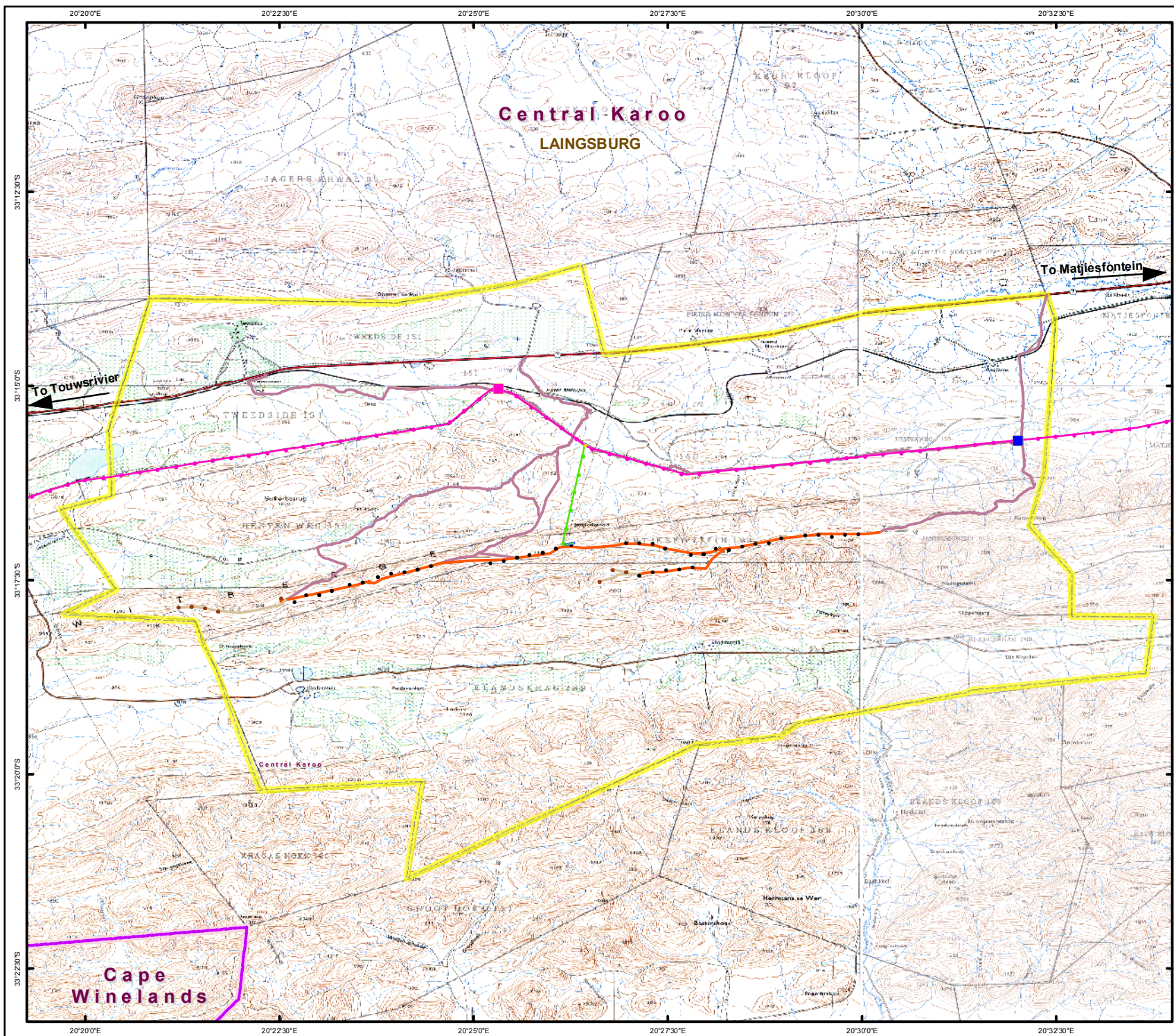


| | |
|---|--------------------|
| Project Company: | Project: |
|  | Witberg Wind Power |
| Document Name: | |
| Witberg Final Layout Revision and Eagle Flight Paths | |
| Projection: UTM 34S | A3 |
|  | |

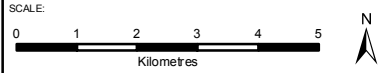
Legend

- Pre-CRM - 27 WTG Layout
○
- CRM Adjustments - 27 WTG Layout
●
- Verraux's Eagle 1.5km buffer

- Martial Eagle 2.5km Buffer

- Booted Eagle 1.2km Buffer

- Observed Eagle Flight Paths






- ### Legend
- District Municipalities
 - Local Municipalities
 - Witberg Land Parcels
 - Existing Transmission Line
 - Main Road
 - Secondary Road
 - Other Road
 - Track
 - Railway
 - River
 - Contour
 - Waterbodies
 - Cultivated Land
 - Open Areas
 - Existing Bantams Traction Linking Station
 - Existing Pietermeintjies Traction Substation
 - 33/132kV Substation
 - Linking Station
 - Existing Dual 132kV Traction Line
 - New 132kV line
 - Wind Turbines
 - Spare Wind Turbines
 - Internal Road
 - Internal Access Road
 - Spare Internal Road



TITLE:
Figure 5: Site Layout Alternative 3 - Project Infrastructure

CLIENT:

| | | |
|------------------|---------------|-------------------|
| DATE: April 2011 | CHECKED: IE | PROJECT: 0117424 |
| DRAWN: AB | APPROVED: SHC | Scale: 1: 125 000 |

| | |
|--|-----------|
| DRAWING: Witberg_All3_Topo_Rev2.mxd | REV: 2 |
|--|-----------|

ERM
 Building 32,
 The Woodlands,
 Woodlands Drive,
 Woodmead, 2148
 Johannesburg, South Africa
 Tel: +27 (0)11 799 4300
 Fax: +27 (0)11 804 2289

Projection: Geographic, Datum: Wgs 84
 Source: NGI, Demarcation Board
 Map No: 3320AB, AD & 3320BA&BC
 Inset: ESRI Data and Maps

SIZE:
A4

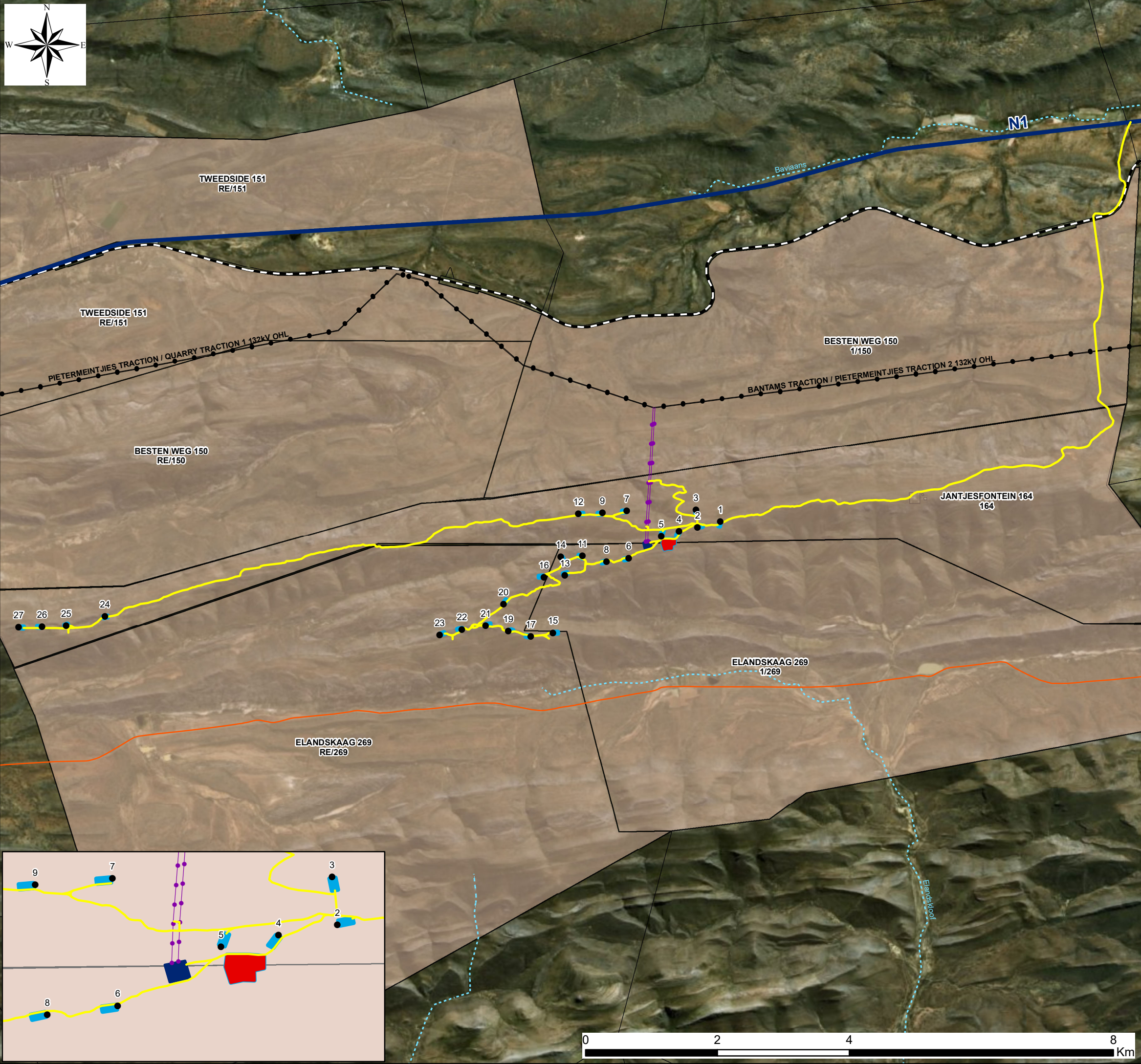


Witberg Wind Farm, Western Cape Province

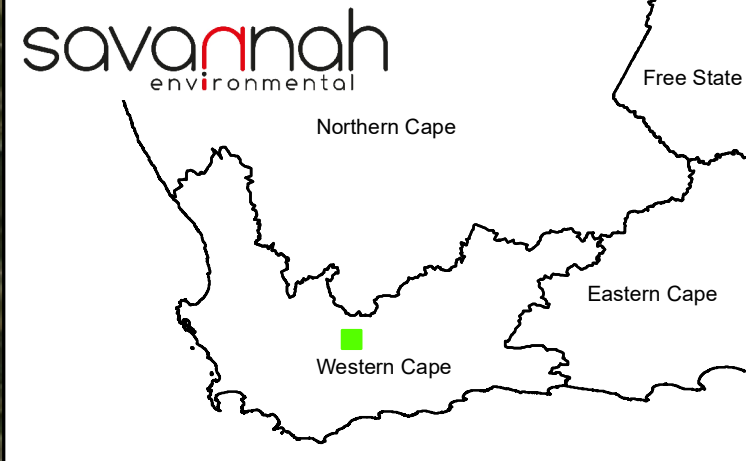
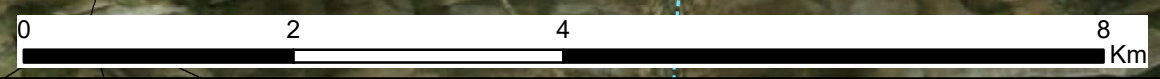
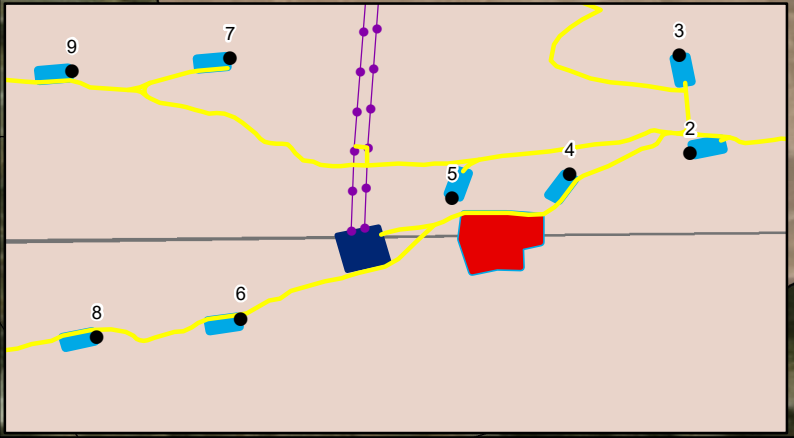
Layout Map

Legend

- Existing Power Line
 - Main Road
 - Railway Line
 - Non-perennial River
 - Project Site
 - Farm Portions
- ### Layout Plan:
- Turbine
 - 132kV Overhead Power Line
 - Access Roads
 - Construction Camp
 - On-site Substation
 - Crane Pads



Scale: 1:56 000
Projection: GCS_WGS_1984_LO17
Map ref: Witberg WF - Layout Map - 22.08.18



Witberg Wind Farm, Western Cape Province

Environmental Sensitivity and Layout Map



Legend

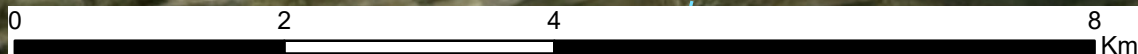
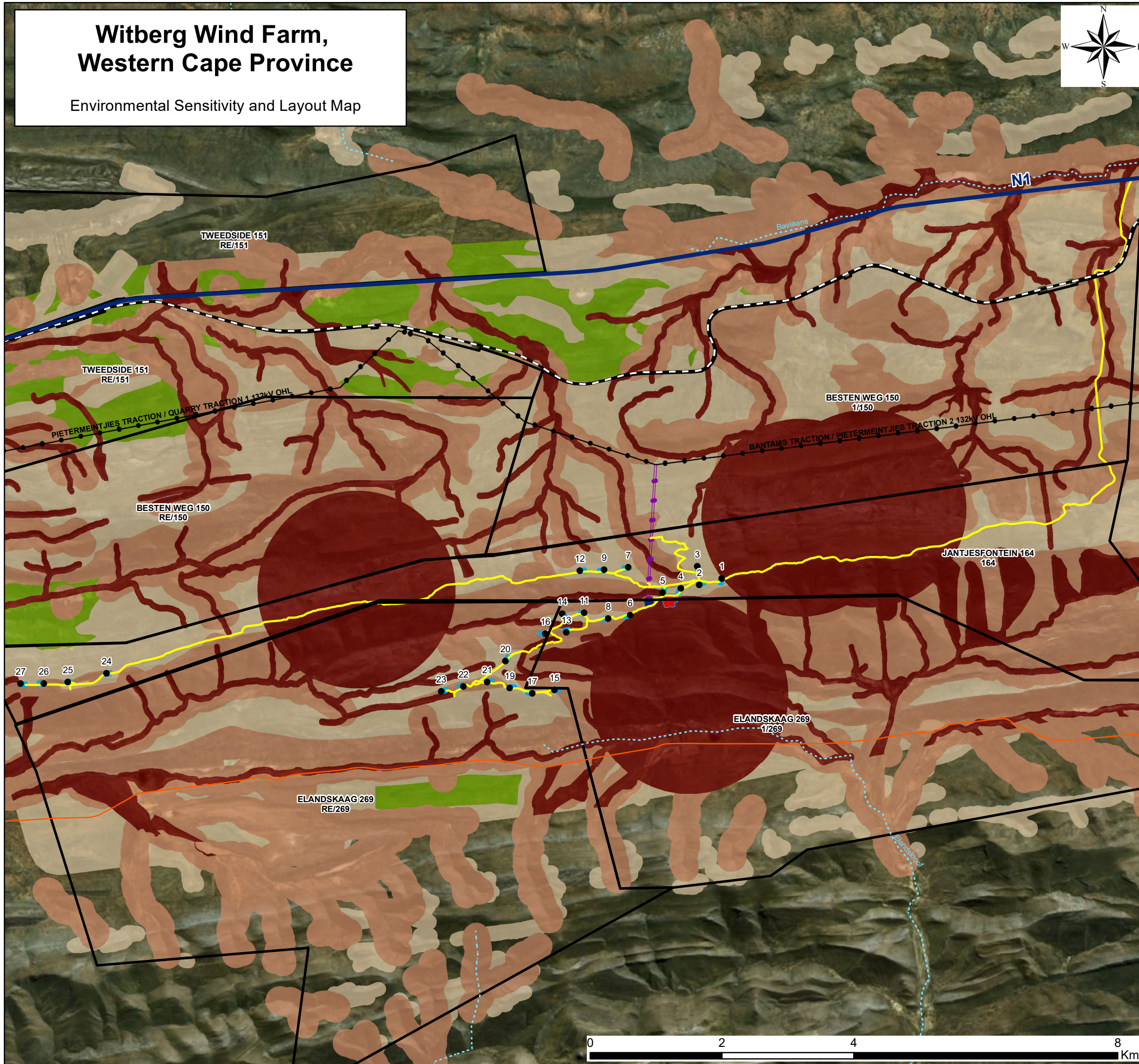
- Existing Power Line
- Main Road
- Railway Line
- Non-perennial River
- Project Site

Layout Plan:

- Turbine
- 132kV Overhead Power Line
- Access Roads
- Construction Camp
- On-site Substation
- Crane Pads

Environmental Sensitivities:

- Very High Sensitivity
- High Sensitivity
- Medium Sensitivity
- Low Sensitivity



savannah
environmental

Scale: 1:56 000
Projection: GCS_WGS_1984_LO17
Map ref: Witberg WF - Layout Map - 22.08.18



Witberg Wind Farm, Western Cape Province

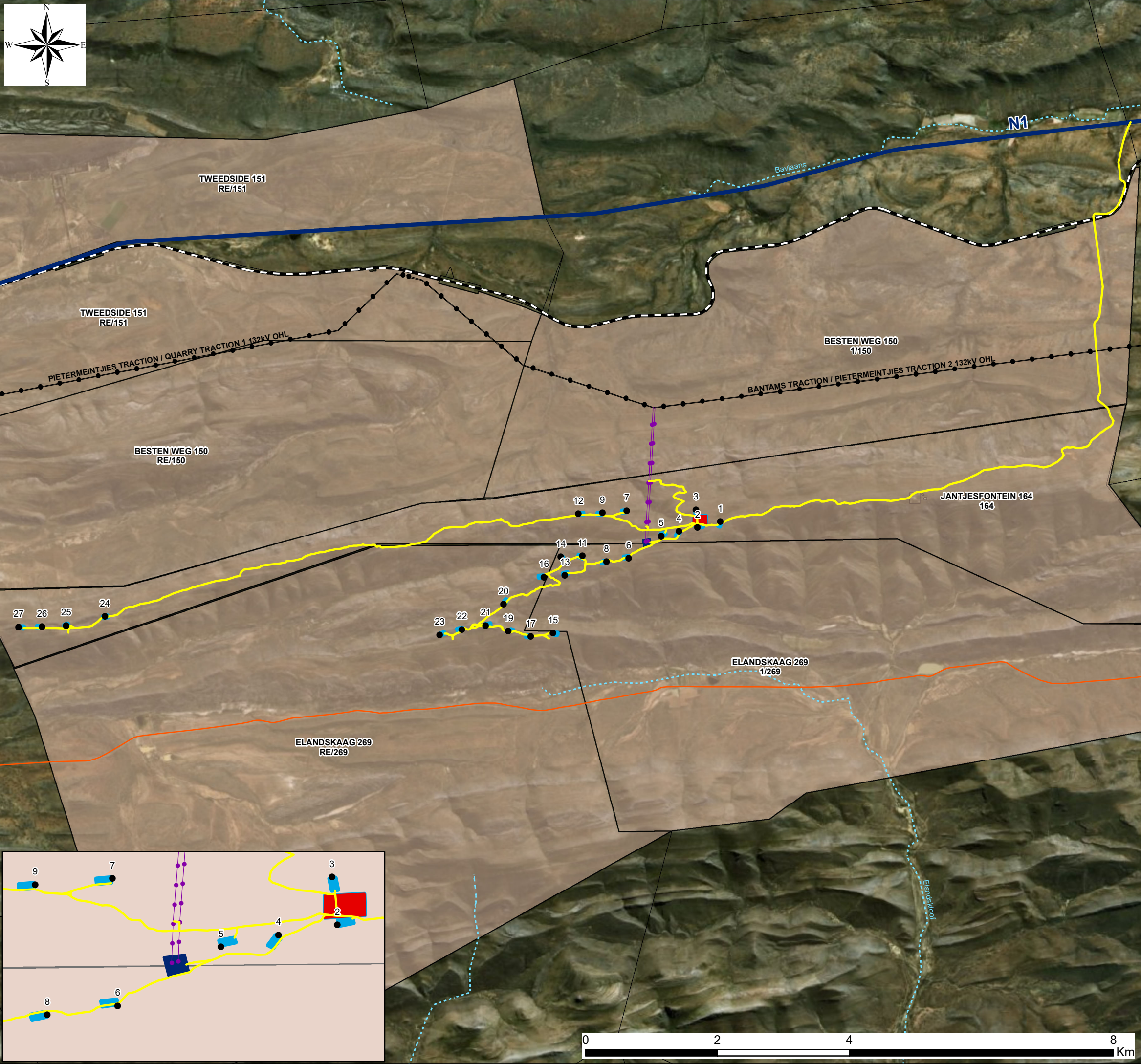
Revised Layout Map

Legend

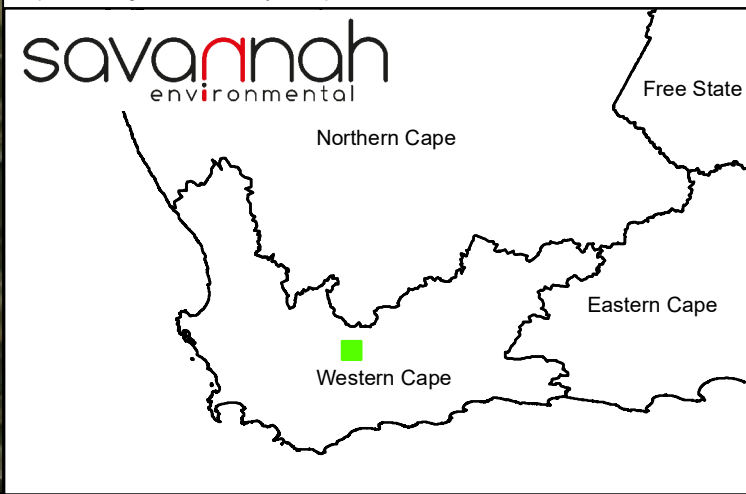
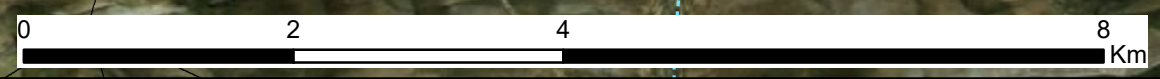
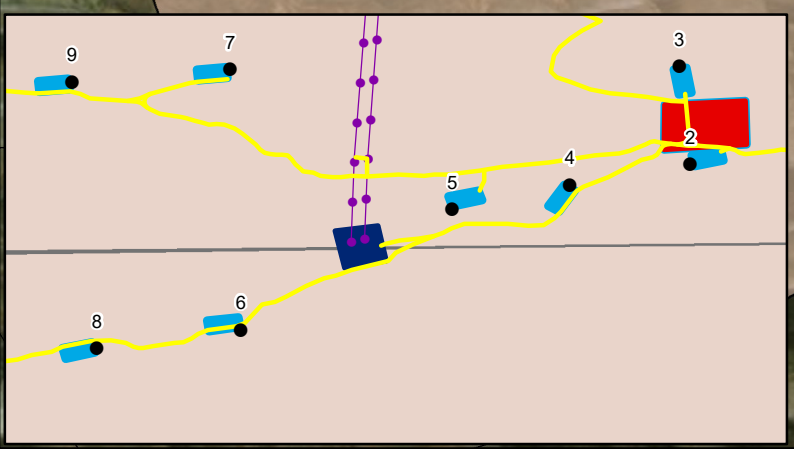
- Existing Power Line
- Main Road
- Railway Line
- Non-perennial River
- Project Site
- Farm Portions

Layout Plan:

- Turbine
- 132kV Overhead Power Line
- Access Roads
- Construction Camp
- On-site Substation
- Crane Pads



Scale: 1:56 000
Projection: GCS_WGS_1984_LO17
Map ref: Witberg WF - Revised Layout Map - 15.03.19



Witberg Wind Farm, Western Cape Province

Environmental Sensitivity and Revised Layout Map



Legend

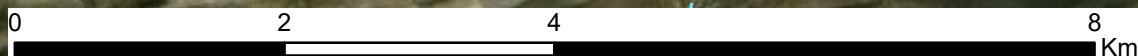
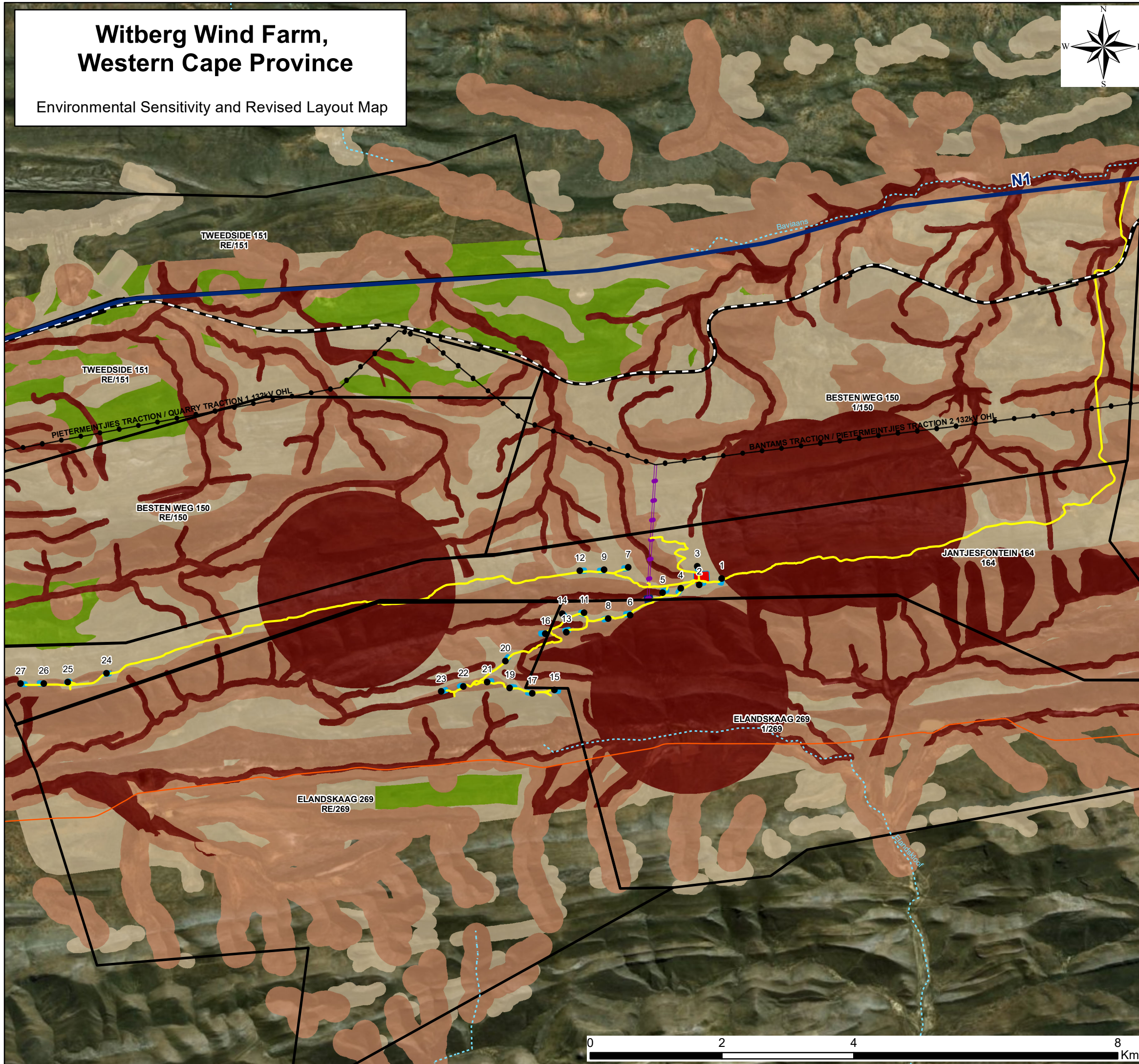
- Existing Power Line
- Main Road
- Railway Line
- Non-perennial River
- Project Site

Layout Plan:

- Turbine
- 132kV Overhead Power Line
- Access Roads
- Construction Camp
- On-site Substation
- Crane Pads

Environmental Sensitivities:

- Very High Sensitivity
- High Sensitivity
- Medium Sensitivity
- Low Sensitivity



savannah
environmental

Scale: 1:56 000
Projection: GCS_WGS_1984_LO17
Map ref: Witberg WF - Env. Sens & Revised Layout Map - 15.03.19