



Appendix 7
Public Participation



Appendix 7A
Proof of Site Notices

OMGEWINGSIMPAKEVALUERINGS (OIE's) VIR DIE BEOOGDE ONTWIKKELING VAN DIE DRIE (3) FOTOVOLTAÏESE (FV) SONKRAGANLEGTE EN BASIESE EVALUERINGS (BE's) VIR DIE GEPAARDGAANDE ROOSTERKONNEKSIE-INFRASTRUKTUUR NABY NOUPOORT EN MIDDELBURG IN DIE NOORD- EN OOS-KAAPPROVINSIE (DO-VERWYSINGSNOMMERS MOET NOG AANGEKONDIG WORD)

Ingevolge die Nasionale Wet op Omgewingsbestuur, 1998 (Wet 107 van 1998) (NEMA) (soos gewysig) en die Regulasies op Omgewingsimpakevaluering (OIE-regulasies), 2014 (soos gewysig), kragtens Staatskennisgewing R982, R983, R984 en R985 (soos gewysig), geskied kennis hiermee dat EDF Renewables (Edms.) Bpk. (hierna "EDF" genoem) SiVEST SA (Edms.) Bpk. aangestel het as die onafhanklike Omgewingsevalueringpraktisyn (OEP) om die nodige OIE, Basiese Evaluering (BE) en Openbare Deelnameprosesse vir die onderstaande beoogde ontwikkelings te onderneem.

PROJEKBESKRYWING

EDF beoog die ontwikkeling van drie (3) aangrensende fotovoltaïese (FV) sonkragaanlegte en gepaardgaande infrastruktuur naby Noupoot en Middelburg in die Noord- en Oos- aapprovinsie. Die beoogde FV-sonkragaanlegte sal die Mooi Plaats FV, Wonderheuvel FV- en Paarde Valley FV-sonkragaanleg heet. Voorts beoog EDF ook die oprigting van drie (3) 132 kV oorhoofse kraglyne en gepaardgaande rooster-infrastruktuur (hierna die "roosterkonneksies" genoem) ten einde die krag wat by elk van die FV-sonkragaanlegte opgewek word, by die nasionale kragnet in te voer.

Ten einde aan die Departement van Energie (DE) se mededingende bodproses vir die verkryging van hernubare krag van Onafhanklike Kragprodusente (IPP's) in Suid-Afrika te voldoen, sal elk van die FV-sonkragaanlegte 'n aparte Omgewingsmagtiging (OM) moet bekom. Elke roosterkonneksie sal ook 'n aparte OM moet bekom.

Met inagneming van die bogenoemde, sal drie (3) OIE's (een (1) vir elke beoogde FV-sonkragaanleg en drie (3) BE's (een (1) vir elke gepaardgaande roosterkonneksie) onderneem word. Hoewel elke FV-sonkragaanleg en die gepaardgaande roosterkonneksie apart geëvalueer sal word, sal 'n enkele openbare deelnameproses vir al ses () die beoogde aansoeke onderneem word. Die potensiële omgewingsimpakte wat met al ses () beoogde ontwikkelings verband hou, sal tydens die OIE's en BE's as deel van 'n kumulatiewe impakevaluering geëvalueer word.

Die opwekkingsvermoë van elk van die FV-sonkragaanlegte en die uitleg van die FV-reeks sal afhang van die uitkoms van die spesialisstudies wat tydens die OIE-proses onderneem word.

PROJEKLIIGING

Die drie (3) beoogde FV-sonkragaanleg- en roosterinfrastruktuurprojekte is sowat 18 km suidwes van Noupoot en sowat 21 km noordwes van Middelburg in onderskeidelik die Noord- en Oos- aapprovinsie geleë. Hoewel beide die Mooi Plaats en Wonderheuvel FV-sonkragaanlegte in die Umsobomvu Plaaslike Munisipaliteit in die Pixley ka Seme Distriksmunisipaliteit van die Noord- aapprovinsie geleë is, is die Paarde Valley FV-sonkragaanleg in die Inxuba Yethemba Plaaslike Munisipaliteit in die Chris Hani Distriksmunisipaliteit van die Oos- aapprovinsie geleë.

Om as 'n Belangstellende en/of Geaffekteerde Party (B&GP) te registreer en/of om meer inligting te bekom, moet u asseblief u naam, kontakbesonderhede en die belang wat u by die aansoeke het by SiVEST by die onderstaande kontakbesonderhede indien:

Hlengiwe Ntuli of Stephan Jacobs

SiVEST Environmental
Posbus 2921
RIVONIA
2128

Tel: 011 798 0 00
Faks: 011 803 7272
E-pos: stephanj@sivest.co.a / hlengiwen@sivest.co.a /
sivestppp@sivest.co.a
Webwerf: www.sivest.co.a

ENVIRONMENTAL IMPACT ASSESSMENTS (EIAs) FOR THE PROPOSED DEVELOPMENT OF THE THREE (3) SOLAR PHOTOVOLTAIC (PV) ENERGY FACILITIES AND BASIC ASSESSMENTS (BAs) FOR THE ASSOCIATED GRID CONNECTION INFRASTRUCTURE NEAR NOUPOORT AND MIDDELBURG IN THE NORTHERN AND EASTERN CAPE PROVINCES (DEA REFERENCE NUMBERS TO BE ANNOUNCED)

In terms of the National Environmental Management Act, 1998 (Act No. 107 of 1998) (NEMA) (as amended) and the Environmental Impact Assessment (EIA) Regulations, 2014 (as amended), under Government Notices R982, R983, R984 and R985 (as amended), notice is hereby given that EDF Renewables (Pty) Ltd (hereafter referred to as "EDF") have appointed SiVEST SA (Pty) Ltd, as the independent Environmental Assessment Practitioner (EAP), to undertake the required EIA, Basic Assessment (BA) and Public Participation processes for the below-mentioned proposed developments.

PROJECT DESCRIPTION

EDF is proposing to develop three (3) adjacent solar photovoltaic (PV) energy facilities and associated infrastructure near Noupoot and Middelburg in the Northern and Eastern Cape Provinces. The proposed solar PV energy facilities will be known as Mooi Plaats Solar PV, Wonderheuvel Solar PV and Paarde Valley Solar PV. In addition, EDF is proposing to construct three (3) 132kV overhead power lines and associated grid infrastructure (hereafter referred to as "the grid connections"), in order to feed the electricity generated by each solar PV energy facility into the national grid.

In order to accommodate the Department of Energy's (DoE) competitive bidding process for procuring renewable energy from Independent Power Producers (IPPs) in South Africa, each solar PV energy facility will require a separate Environmental Authorisation (EA). Additionally, each grid connection will also require a separate EA.

In light of the above, three (3) EIAs (one (1) for each proposed solar PV energy facility) and three (3) BAs (one (1) for each associated grid connection) will be undertaken. Although each solar PV energy facility and the associated grid connection will be assessed separately, a single public participation process is being undertaken for all six () proposed applications. The potential environmental impacts associated with all six () proposed developments will be assessed during the EIAs and BAs as part of a cumulative impact assessment.

The generation capacity of each solar PV facility and the layout of the PV arrays will be dependent on the outcome of the specialist studies conducted during the EIA process.

PROJECT LOCATION

The three (3) proposed solar PV energy facilities and grid infrastructure projects are located approximately 18km south-west of Noupoot and approximately 21km north-west of Middelburg, in the Northern and Eastern Cape Provinces respectively. While both the Mooi Plaats and Wonderheuvel Solar PV Energy Facilities are located in the Umsobomvu Local Municipality, in the Pixley ka Seme District Municipality of the Northern Cape Province, the Paarde Valley Solar PV Energy Facility is located in the Inxuba Yethemba Local Municipality, in the Chris Hani District Municipality of the Eastern Cape Province.

To register as an Interested and/or Affected Party (I&AP) and/or to obtain additional information, please submit your name, contact details and the interest which you have in the applications to SiVEST as per the details below:

Hlengiwe Ntuli or Stephan Jacobs

SiVEST Environmental Tel: (011) 798 0 00

P O Box 2921

RIVONIA

2128

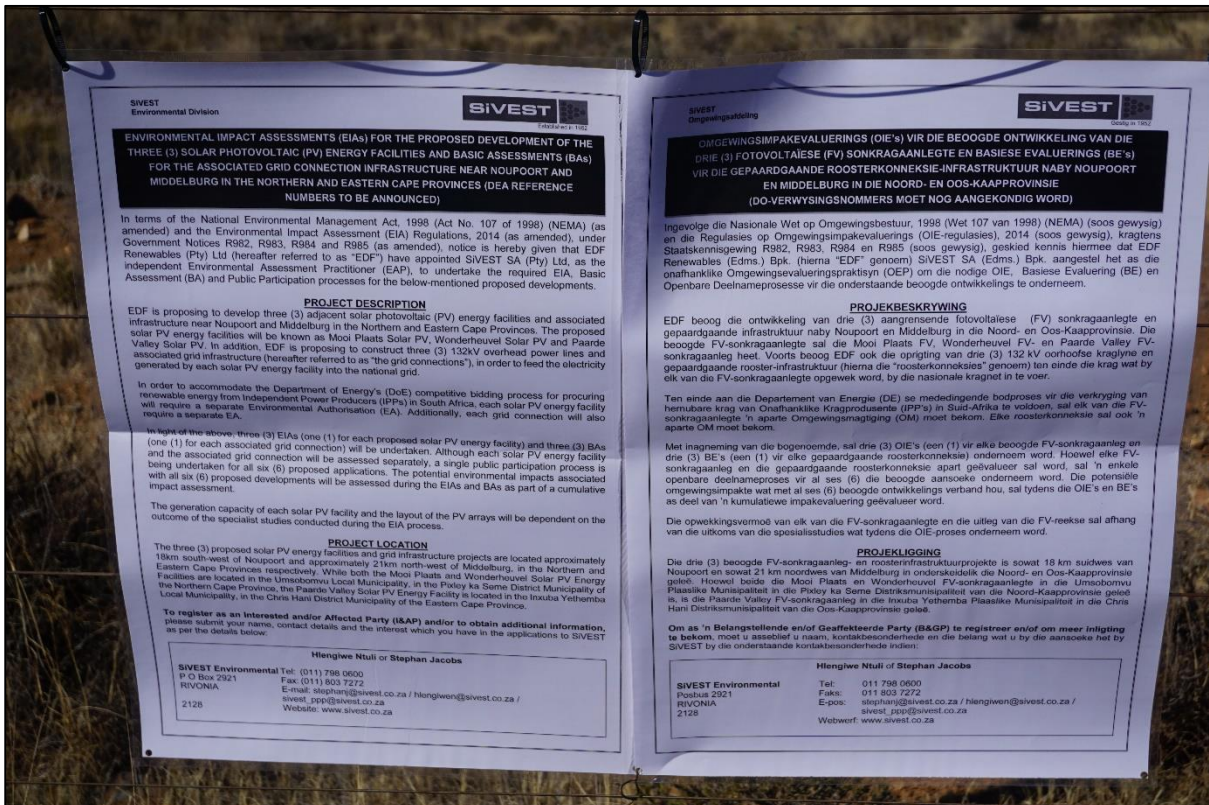
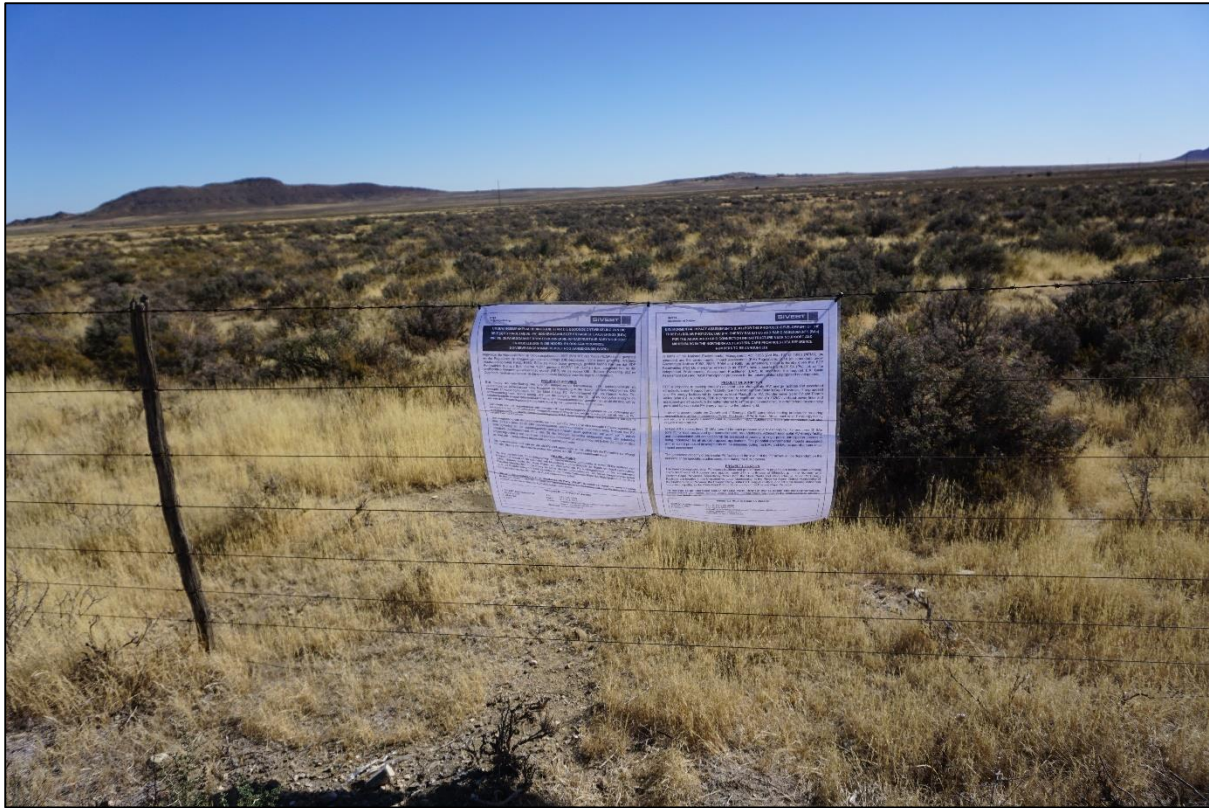
Fax: (011) 803 7272

E-mail: stephanj@sivest.co.a / hlengiwen@sivest.co.a /

sivestppp@sivest.co.a

Website: www.sivest.co.a

SITE NOTICES (ENGLISH AND AFRIKAANS) ERECTED ON BOUNDARY OF APPLICATION SITE – BOUNARY OF REMAINDER OF THE FARM MOOI PLAATS NO. 121 AND PORTION 3 OF THE FARM WONDER HEUVEL NO. 140 (COORDINATES: S31°19'56.27"S; E24°41'45.51")



SIVEST
Environmental Division

ENVIRONMENTAL IMPACT ASSESSMENTS (EIAs) FOR THE PROPOSED DEVELOPMENT OF THE THREE (3) SOLAR PHOTOVOLTAIC (PV) ENERGY FACILITIES AND BASIC ASSESSMENTS (BAs) FOR THE ASSOCIATED GRID CONNECTION INFRASTRUCTURE NEAR NOUPOORT AND MIDDELBURG IN THE NORTHERN AND EASTERN CAPE PROVINCES (DEA REFERENCE NUMBERS TO BE ANNOUNCED)

In terms of the National Environmental Management Act, 1998 (Act No. 107 of 1998) (NEMA) (as amended) and the Environmental Impact Assessment (EIA) Regulations, 2014 (as amended), under Government Notices R982, R983, R984 and R985 (as amended), notice is hereby given that EDF Renewables (Pty) Ltd (hereafter referred to as "EDF") have appointed SIVEST SA (Pty) Ltd, as the independent Environmental Assessment Practitioner (EAP), to undertake the required EIA, Basic Assessment (BA) and Public Participation processes for the below-mentioned proposed developments.

PROJECT DESCRIPTION

EDF is proposing to develop three (3) adjacent solar photovoltaic (PV) energy facilities and associated infrastructure near Noupoort and Middelburg in the Northern and Eastern Cape Provinces. The proposed solar PV energy facilities will be known as Mooi Plaats Solar PV, Wonderheuvel Solar PV and Paarde Valley Solar PV. In addition, EDF is proposing to construct three (3) 132kV overhead power lines and associated grid infrastructure (hereafter referred to as "the grid connections"), in order to feed the electricity generated by each solar PV energy facility into the national grid.

In order to accommodate the Department of Energy's (DoE) competitive bidding process for procuring renewable energy from Independent Power Producers (IPPs) in South Africa, each solar PV energy facility requires a separate EA.

Scope of the above: Three (3) EIAs (one (1) for each proposed solar PV energy facility) and three (3) BAs (one (1) for each associated grid connection) will be undertaken. Although each solar PV energy facility and the associated grid connection will be assessed separately, a single public participation process is being undertaken for all six (6) proposed applications. The potential environmental impacts associated with all six (6) proposed developments will be assessed during the EIAs and BAs as part of a cumulative impact assessment.

The generation capacity of each solar PV facility and the layout of the PV arrays will be dependent on the outcome of the specialist studies conducted during the EIA process.

PROJECT LOCATION

The three (3) proposed solar PV energy facilities and grid infrastructure projects are located approximately 18km south-west of Noupoort and approximately 21km north-west of Middelburg, in the Northern and Eastern Cape Provinces respectively. While both the Mooi Plaats and Wonderheuvel Solar PV Energy Facilities are located in the Umsobomvu Local Municipality, in the Pixley ka Seme District Municipality of the Northern Cape Province, the Paarde Valley Solar PV Energy Facility is located in the Inxuba Yethemba Local Municipality, in the Chris Hani District Municipality of the Eastern Cape Province.

To register as an Interested and/or Affected Party (I&AP) and/or to obtain additional information, please submit your name, contact details and the interest which you have in the applications to SIVEST as per the details below:

Hengwele Ntuli or Stephan Jacobs

SIVEST Environmental
P O Box 2921
RIVONIA
2128

Tel: 011 788 0600
Fax: 011 803 7272
E-mail: stephan@sivest.co.za / hengwele@sivest.co.za /
sivest_ppp@sivest.co.za
Website: www.sivest.co.za

SIVEST
Omgewingsbedryf

OMGEWINGSIMPAKEVALUERINGS (OIE's) VIR DIE BEOOGDE ONTWIKKELING VAN DIE DRIE (3) FOTOVOLTAÏESE (FV) SONKRAGAAANLEGTE EN BASIESE EVALUERINGS (BE's) VIR DIE GEPAARDGAANDE ROOSTERKONNEKSIE-INFRASTRUKTUUR NABY NOUPOORT EN MIDDELBURG IN DIE NOORD- EN OOS-KAAPPROVINSIE (DO-VERWYSINGSNOMMERS MOET NOG AANGEKONDIG WORD)

Ingevolge die Nasionale Wet op Omgewingsbestuur, 1998 (Wet 107 van 1998) (NEMA) (soos gewysig) en die Regulasies op Omgewingsimpevaluering (OIE-regulasies), 2014 (soos gewysig), kragtens Staatskenningsgewing R982, R983, R984 en R985 (soos gewysig), geskied kennis hiermee dat EDF Renewables (Edms.) Bpk. (hierna "EDF" genoem) SIVEST SA (Edms.) Bpk. aangestel het as die onafhanklike Omgewingsevalueringpraktisyn (OEP) om die nodige OIE, Basiese Evaluering (BE) en Openbare Deelnemingsprosesse vir die onderstaande beoogde ontwikkelings te onderneem.

PROJEKTBESKRYWING

EDF beoog die ontwikkeling van drie (3) aangrensende fotovoltaïese (FV) sonkragaanlegte en gepaardgaande infrastruktuur naby Noupoort en Middelburg in die Noord- en Oos-Kaapprovinsie. Die beoogde FV-sonkragaanlegte sal die Mooi Plaats FV, Wonderheuvel FV, en Paarde Valley FV-sonkragaanlegte heet. Voorts beoog EDF ook die oprigting van drie (3) 132 kV oorhoofse kraglyne en gepaardgaande roosterinfrastruktuur (hierna die "roosterkonneksies" genoem) ten einde die krag wat by elk van die FV-sonkragaanlegte opgewek word, by die nasionale kraglyn te voer.

Ten einde aan die Departement van Energie (DE) se mededrigende bodproses vir die verkryging van hernubare krag van Onafhanklike Kragprodusente (IPP's) in Suid-Afrika te voldoen, sal elk van die FV-sonkragaanlegte 'n aparte Omgewingsimpaktoetsing (OM) moet bekome. Elke roosterkonneksie sal ook 'n aparte OM moet bekome.

Met inagneming van die bogenoemde, sal drie (3) OIE's (een (1) vir elke beoogde FV-sonkragaanleg en drie (3) BE's (een (1) vir elke gepaardgaande roosterkonneksie) onderneem word. Hoewel elke FV-sonkragaanleg en die gepaardgaande roosterkonneksie apart geëvalueer sal word, sal 'n enkele openbare deelnemingsproses vir al ses (6) die beoogde aansoek onderneem word. Die potensieel omgewingsimpakte wat met al ses (6) beoogde ontwikkelings verband hou, sal tydens die OIE's en BE's as deel van 'n kumulatiewe impakevaluering geëvalueer word.

Die opwekkingsvermoë van elk van die FV-sonkragaanlegte en die uitleg van die FV-reeks sal afhang van die uitkomst van die spesialisstudies wat tydens die OIE-proses onderneem word.

PROJEKTLIGGING

Die drie (3) beoogde FV-sonkragaanlegte en roosterinfrastruktuurprojekte is sowat 18 km suidwes van Noupoort en sowat 21 km noordwes van Middelburg in onderskeidelik die Noord- en Oos-Kaapprovinsie geleë. Hoewel beide die Mooi Plaats en Wonderheuvel FV-sonkragaanlegte in die Umsobomvu Plaaslike Munisipaliteit in die Pixley ka Seme Distriksmunisipaliteit van die Noord-Kaapprovinsie geleë is, is die Paarde Valley FV-sonkragaanleg in die Inxuba Yethemba Plaaslike Munisipaliteit in die Chris Hani Distriksmunisipaliteit van die Oos-Kaapprovinsie geleë.

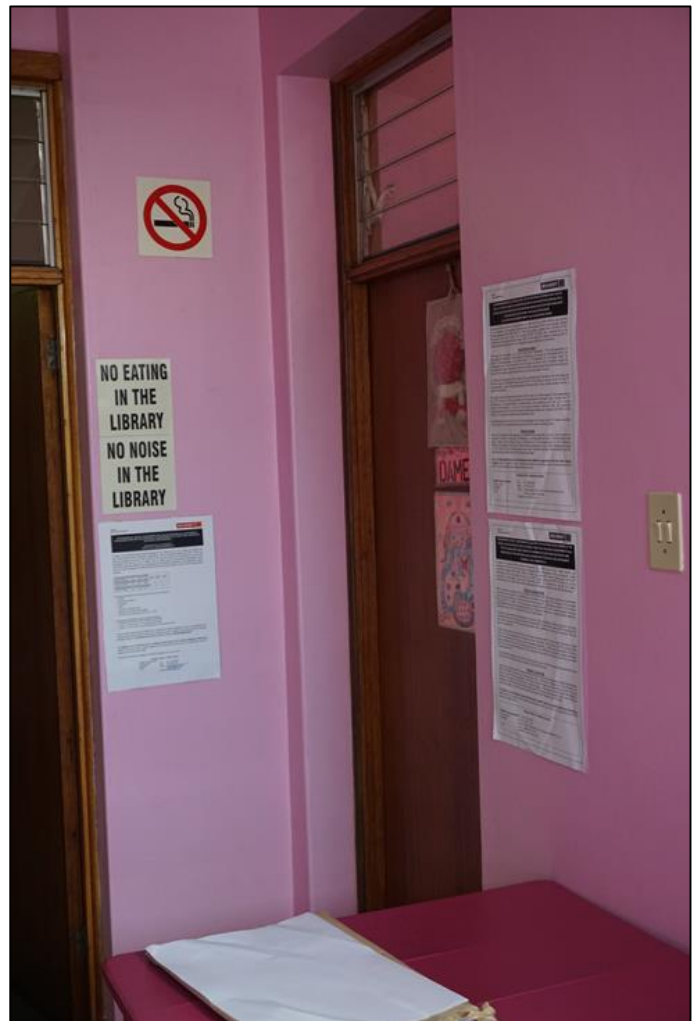
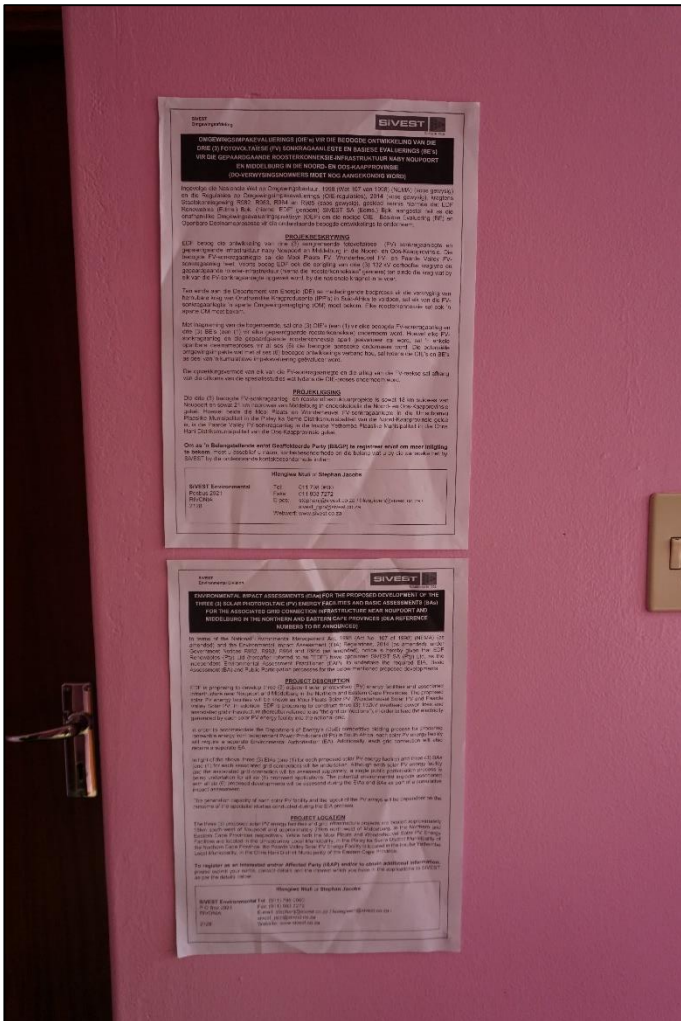
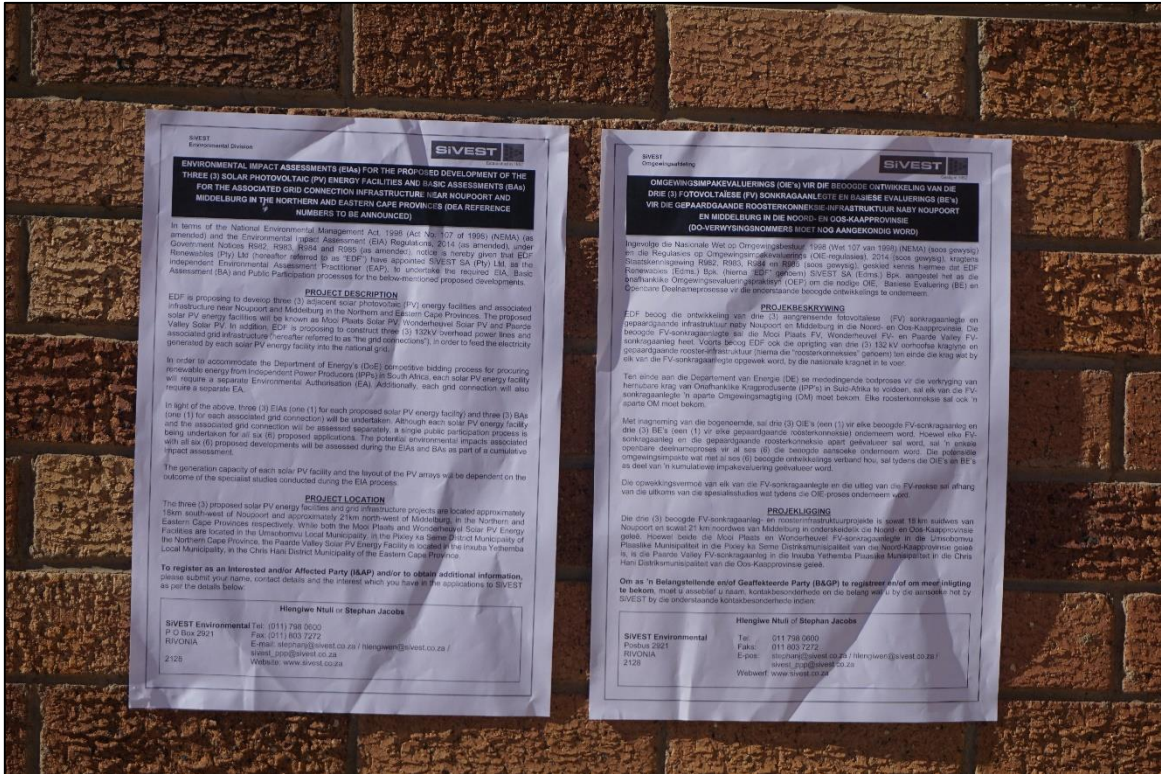
Om as 'n Belangstellige en/of Geïnteresseerde Party (B&G) te registreer en/of om meer inligting te bekom, moet u asseblief u naam, kontakbesonderhede en die belang wat u by die aansoek het by SIVEST by die onderstaande kontakbesonderhede indien:

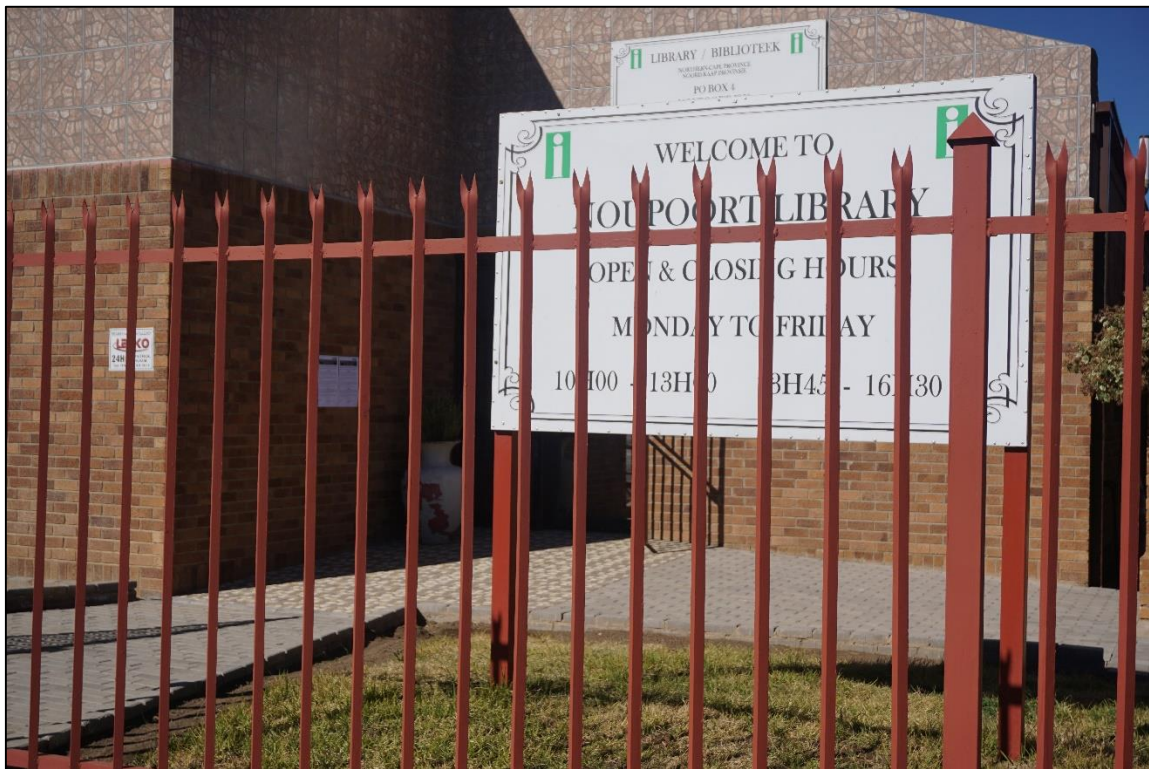
Hengwele Ntuli or Stephan Jacobs

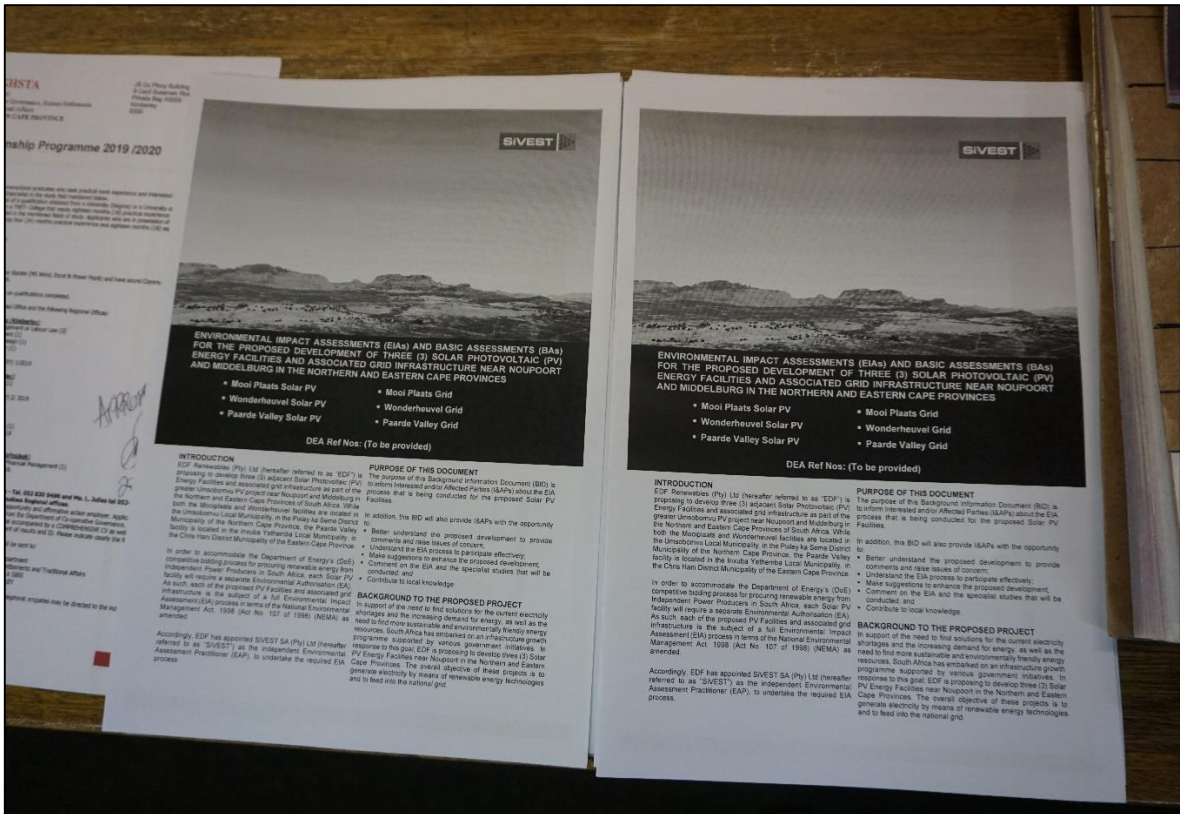
SIVEST Environmental
Postbus 2921
RIVONIA
2128

Tel: 011 788 0600
Faks: 011 803 7272
E-pos: stephan@sivest.co.za / hengwele@sivest.co.za /
sivest_ppp@sivest.co.za
Webwerf: www.sivest.co.za

SITE NOTICES AND BIDS PLACED AT NOUPOORT PUBLIC LIBRARY









Appendix 7B
Written Notices



OMGEWINGSIMPAKEVALUERINGS (OIE's) EN BASIESE EVALUERINGS (BE's) VIR DIE BEOOGDE ONTWIKKELING VAN DRIE (3) FOTOVOLTAÏESE (FV) SONKRAGANLEGTE EN GEPAARDGAANDE ROOSTERINFRASTRUKTUUR NABY NOUPOORT EN MIDDELBURG IN DIE NOORD- EN OOS-KAAPROVINSIE

- Mooi Plaats FV sonkraganleg
- Wonderheuvel FV sonkraganleg
- Paarde Valley FV sonkraganleg
- Mooi Plaats Rooster
- Wonderheuvel Rooster
- Paarde Valley Rooster

DO-verw Nos: (Moet nog aangekondig word)

INLEIDING

EDF Renewables (Edms.) Bpk. (hierna "EDF" genoem) beoog die ontwikkeling van drie (3) aangrensende fotovoltaïese (FV) sonkragaanlegte en gepaardgaande roosterinfrastruktuur as deel van die groter Umsobomvu FV-projek naby Noupoort en Middelburg in Suid-Afrika se Noord- en Oos- aapprovinsie. Hoewel beide die Mooi Plaats- en Wonderheuvelaanlegte in die Umsobomvu Plaaslike Munisipaliteit in die Pixley ka Seme Distriksmunisipaliteit van die Noord- aapprovinsie geleë is, is die Paarde Valley-aanleg in die Inxuba Yethemba Plaaslike Munisipaliteit in die Chris Hani Distriksmunisipaliteit van die Oos- aapprovinsie geleë.

Ten einde aan die Departement van Energie (DE) se mededingende bodproses vir die verkryging van hernubare krag van Onafhanklike raprodusente (IPP's) in Suid-Afrika te voldoen, sal elk van die FV-sonkragaanlegte 'n aparte Omgewingsmagtiging (OM) moet bekom. Gevolglik sal elk van die beoogde FV-aanlegte 'n volledige Omgewingsimpevaluering (OIE) verg. Voorts sal die gepaardgaande roosterinfrastruktuur verg dat 'n aparte Basiese Evaluering (BE) onderneem moet word. Derhalwe sal drie (3) OIE's een (1) vir elke beoogde FV-aanleg en drie (3) BE's een (1) vir elke gepaardgaande roosterinfrastruktuur onderneem word. Die OIE's en BE's sal ingevolge die OIE-regulasies, 2014 (soos gewysig), onderneem word wat kragtens Artikel 5 van die Nasionale Wet op Omgewingsbestuur, 1998 (Wet 107 van 1998) (NEMA) (soos gewysig), afgekondig is. Hoewel elke FV-aanleg en die gepaardgaande roosterinfrastruktuur apart gevalueer sal word, word 'n enkele openbare deelnameproses vir al ses (6) beoogde projekte onderneem. Die potensiele omgewingsimpakte wat met al ses (6) projekte verband hou, sal tydens die OIE's en BE's as deel van 'n kumulatiewe impakevaluering gevalueer word.

EDF het SIVEST SA (Edms.) Bpk. (hierna "SIVEST" genoem) derhalwe aangestel as die onafhanklike Omgewings-evalueringspraktisyn (OEP) om die nodige OIE- en BE-prosesse te onderneem.

DOEL VAN HIERDIE DOKUMENT

Die doel van hierdie Agtergrondinligtingsdokument (AID) is om belangstellende en/of geaffekteerde Partye (B&GP's) in te lig oor die OIE- en BE-prosesse wat vir elk van die beoogde FV-aanlegte en gepaardgaande roosterinfrastruktuur onderneem word.

Voorts sal hierdie AID aan B&GP's die geleentheid bied om:

- die beoogde ontwikkeling beter te verstaan ten einde kommentaar te lewer en knelpunte te opper;
- die OIE- en BE-prosesse te verstaan ten einde doeltreffend daaraan te kan deelneem;
- voorstelle te maak om die beoogde ontwikkeling te verbeter;
- kommentaar te lewer op die spesialisstudies wat onderneem gaan word; en
- plaaslike kennis by te dra.

AGTERGROND MET BETREKKING TOT DIE BEOOGDE PROJEK

Ter ondersteuning van die behoefte om oplossings vir die huidige elektrisiteitskorte en die groeiende vraag na energie te kry, asook die behoefte om meer volhoubare en omgewingsvriendelike kragbronne te kry, het Suid-Afrika 'n infrastruktuurgroei-program van stapel gestuur wat deur verskeie regeringsinisiatiewe gesteun word. In antwoord op hierdie doelwit, beoog EDF die ontwikkeling van drie (3) FV-sonkragaanlegte en gepaardgaande roosterinfrastruktuur naby Noupoort en Middelburg in die Noord- en Oos- aapprovinsie. Die uiteindelijke doel van hierdie projekte is om elektrisiteit aan die

hand van hernubare kragtegnologie op te wek en dit by die nasionale kragnet in te voer.

FV-SONKRAGKOMPONENTE

Die drie (3) FV-sonkragaanlegte sal die volgende komponente insluit:

- FV-velde (reekse) wat uit etlike FV-panele bestaan. Die aantal panele, die opwekkingsvermo van elke aanleg en die uitleg van die reekse sal afhang van die uitkoms van die spesialisstudies wat tydens die OIE-proses onderneem word.
- FV-panele sal hetsy vaste kantelmontering of enkelas naspooormontering wees en die modules hetsy kristallynsilikon of dun filmtegnologie. Elke paneel sal sowat 2 m breed en tussen 1 m en 4 m hoog wees, afhangend van die soort montering.
- Interne paaie, tussen 4 m en 10 m breed, sal toegang tot die FV-reekse bied. Waar moontlik, sal bestaande terreinpaai gebruik word, hoewel nuwe terreinpaai gebou sal word, waar nodig.
- Elke FV-aanleg sal hoogstens twee (2) tydelike konstruksiestapelwerwe/monteringsgebiede van sowat 10 ha elk insluit.
- Bedryfs- en instandhoudingsgeboue sal vir elke FV-veld voorsien word, wat 'n oppervlak van sowat 2 500 m² (50 m x 50 m) sal beslaan.
- Mediumspanningskabels sal die FV-aanleg met die roosterkonneksie-infrastruktuur verbind. Waar dit tegnies uitvoerbaar is, sal hierdie kabels ondergronds gel word.

ROOSTERKONNEKSIE-INFRASTRUKTUUR

Die beoogde roosterkonneksie-infrastruktuur vir elke FV-aanleg word as deel van 'n aparte BE-proses ge valueer. Die roosterinfrastruktuur sal die volgende komponente insluit:

- Nuwe interne en kollektorsubstasies om elke FV-aanleg te bedien, wat elk 'n oppervlak van hoogstens 4 ha sal beslaan.
- 'n Nuwe 132 kV oorhoofse kraglyn wat die interne of kollektorsubstasies met hetsy die Hydra D Hooftransmissiesubstasie (HTS) of die beoogde Coleskop Windkragaanleg (WEF) se substasie sal verbind, vanwaar die elektrisiteit by die nasionale kragnet ingevoer sal word.

PROJEKLISSING

Die drie (3) FV-aanlegte en gepaardgaande roosterinfrastruktuur is sowat 18 km suidwes van Noupoot en sowat 21 km noordwes van Middelburg in die Umsobomvu en Inxuba Yethemba Plaaslike

Munisipaliteite van onderskeidelik die Noord- en Oos- aapproovinsie gele , soos aangedui op die kaart op die keersy.

OIE-/BE-PROSES

Wat is 'n OIE?

'n OIE is 'n proses van inwinning, organisering, ontleding, vertolking en kommunikasie van inligting wat betrekking het op 'n beoogde ontwikkeling ten einde potensi le omgewingsimpakte te identifiseer. Hierdie inligting bied die Bevoegde Owerheid (naamlik die DO) 'n konkrete grondslag vir hul besluitneming met betrekking tot Omgewingsmagtiging (OM).

Wat is 'n BE?

'n BE is 'n proses soortgelyk aan 'n OIE, maar word onderneem waar die impakte minder waarskynlik beduidende impakte op die ontvangsomgewing sal h . Soos in die geval van IOE's, identifiseer BE's ook potensi le omgewingsimpakte en bied die Bevoegde Owerheid 'n konkrete grondslag vir hul besluitneming.

Wetlike vereistes

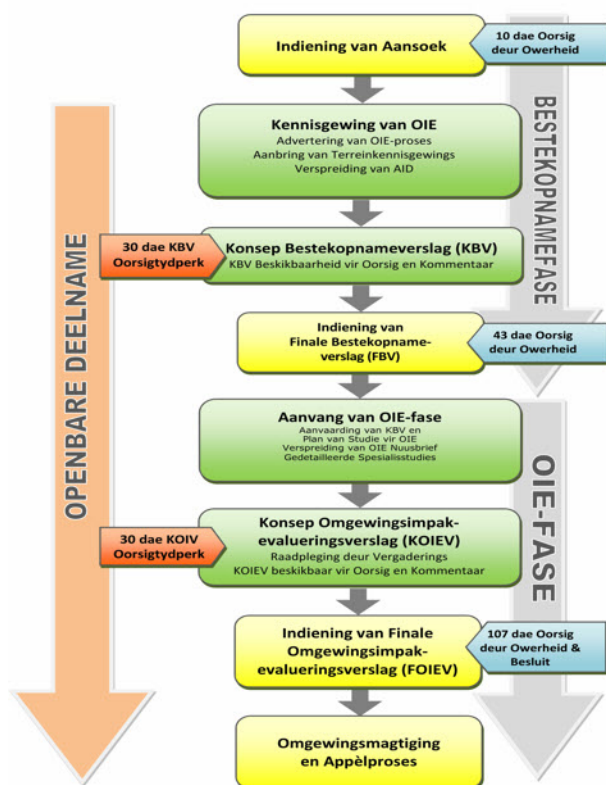
Ingevolge NEMA (soos gewysig), moet 'n OIE-proses vir die beoogde FV-sonkragaanlegte onderneem word, aangesien verskeie gelyste ennisgewing 2-aktiwiteite (Staatskennisgewing R984, soos gewysig) deur elk van die beoogde projekte geaktiveer word. 'n BE-proses moet vir die gepaardgaande roosterinfrastruktuur onderneem word, aangesien verskeie gelyste ennisgewing 1-aktiwiteite (Staatskennisgewing R983, soos gewysig) deur elk van die beoogde projekte geaktiveer word.

Die OIE- en BE-prosesse wat gevolg sal word, word in die diagramme hieronder ge illustreer.

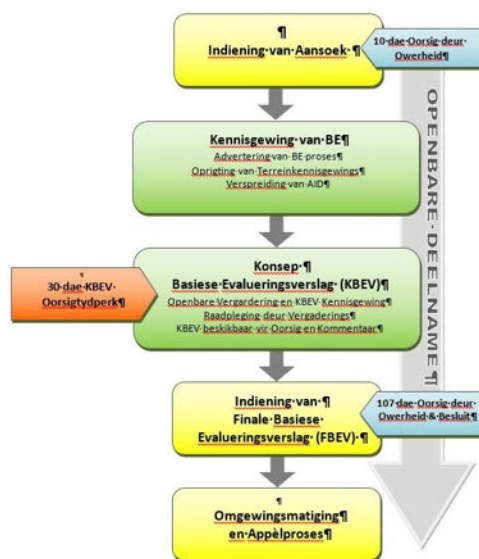
Die prim re doel van die OIE-/BE-prosesse is om omgewingskwessies en impakte te evalueer wat verband hou met die beoogde aktiwiteit en om die omvang van hierdie impakte te evalueer. Die volgende spesialisstudies sal hierdie proses toelig:

- Landbou en Grondsoorte
- Avifauna
- Ekology (Fauna en Flora)
- Geotegnies
- Erfenis en Paleontology
- Sosio-eonomies
- Oppervlakwater
- Verkeer
- Visueel

OMGEWINGSIMPAKEVALUERINGSPROSES



BASIESE EVALUERINGSPROSES



HOE OM BETROKKE TE RAAK

Openbare deelname is die hoeksteen van enige OIE/BE, met die primêre doelwit om toe te sien dat alle belangstellende en/of geïnteresseerde partye (insluitend Staatsinstansies/Owerhede) die geleentheid kry om deel te neem aan die OIE-proses en om toegang tot alle tersaaklike inligting en dokumente te hê wat verband hou met die beoogde ontwikkeling.

Openbare kennisgewing van die OIE-/BE-prosesse sal die volgende insluit:

- Advertensies sal in 'n plaaslike koerant geplaas word.
- 'n Agtergrondinligtingsdokument (AID) sal versprei word.
- 'n kennisgewing in die vorm van e-posse, briewe, faks en SMS'e, waar van toepassing.
- Terreinkennisgewings sal by die ontwikkelingsterrein opgerig word.
- Alle tersaaklike dokumentasie sal aanlyn en in openbare biblioteke beskikbaar gestel word.

Daarbenewens sal die tersaaklike verslae beskikbaar gemaak word vir openbare insae en kommentaar en openbare/fokusgroepvergaderings sal gehou word.

As u as 'n B&GP wil registreer, kan u dit doen deur:

- te reageer (telefonies, per faks, pos of e-pos) op die uitnodiging wat in die pers geadverteer is;
- die vergaderings by te woon wat tydens die verloop van die projek gehou sal word. Sou u as 'n B&GP registreer, sal u outomaties 'n uitnodiging na hierdie vergaderings toe ontvang;
- ons te kontak (telefonies, per faks, pos of e-pos) met enige navrae, kommentaar of versoeke vir verdere projekinligting; en
- kommentaar in te dien op die konsepverslae (BV's/ BEV's/ OIEV's) en wel in die gestipuleerde insaetydperke.

As u uself as 'n B&GP vir hierdie beoogde projekte ag, moedig ons u aan om gebruik te maak van die geleentheid wat deur die openbare deelnameproses geskep word om aktief by die proses betrokke te raak en kommentaar te lewer of knelpunte te opper wat u raak en/of waarin u belangstel en waarvoor u meer inligting verlang. U inset in hierdie proses vorm 'n belangrike deel van die omgewingstudies en ons hoor graag van u om u siening oor die beoogde projekte te kry.


Neem asseblief kennis dat alle tersaaklike publieke dokumente van SiVEST se webwerf afgelaai kan word.

The logo for SiVEST, featuring the word "SiVEST" in white capital letters on a red rectangular background, followed by a graphic of several red dots of varying sizes arranged in a cluster.


Ons sien na u bydraes

Kontak: Hlengiwe Ntuli

 **Posbus 2921, RIVONIA, 2128**

 **Telefoon: (011) 798 0600**

 **E-pos: hlengiwen@sivest.co.za / sivest_ppp@sivest.co.za**

 **Faks: (011) 803 7272**

Webwerf: www.sivest.co.za

Liggingskaart

PROPOSED CONSTRUCTION OF THREE SOLAR PHOTOVOLTAIC (PV) ENERGY FACILITIES NEAR NOUPOORT, NORTHERN AND EASTERN CAPE PROVINCES REGIONAL CONTEXT

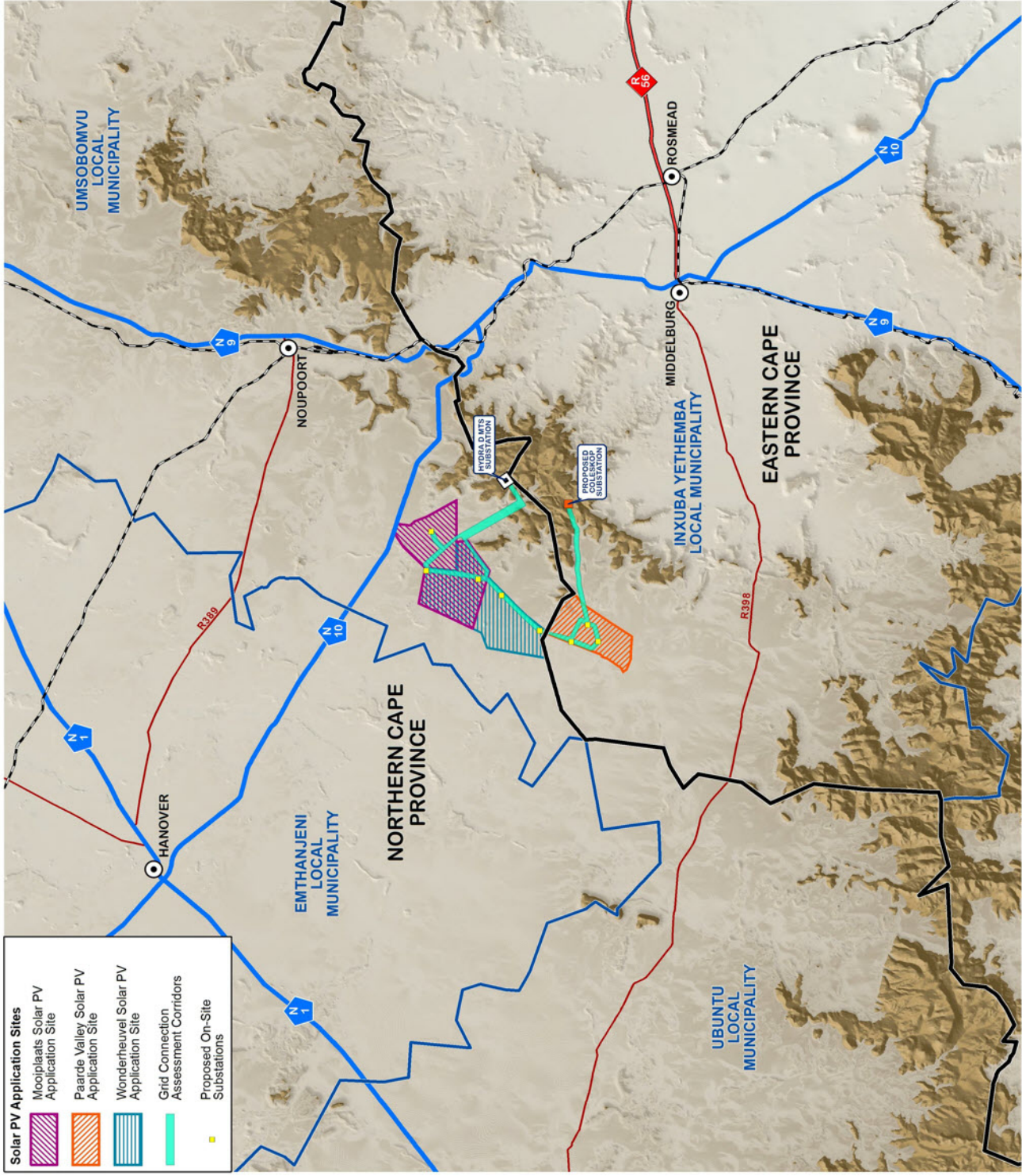
- Legend**
- Provincial Boundary
 - Local Municipal Boundaries
 - National Routes
 - Main Arterial Routes
 - Main Roads
 - Railways
 - Main Towns
 - ◇ Hydra D MTS Substation
 - Proposed Coleskop WEF Substation

SOURCE: MUNICIPAL DEMARCATION BOARD, 2011


SIVEST
 ENVIRONMENTAL DIVISION
 51 WESSEL'S ROAD
 SOMERSETBURG
 6001 SOUTH AFRICA
 Phone: +27 11 803 9772
 e-mail: sivist@siwest.co.za

Project No: 15324
 Date: 20/05/2019
 Prepared By: RLS
 Map Ref No: 15324BID_01
 Revision: 0
 Date:

THIS MAP HAS BEEN PREPARED UNDER THE CONTROLS ESTABLISHED BY THE SIVEST QUALITY MANAGEMENT SYSTEM WHICH HAS BEEN CERTIFIED ISO 9001:2008 COMPLIANT



- Solar PV Application Sites**
- Mooplaats Solar PV Application Site
 - Paarde Valley Solar PV Application Site
 - Wonderheuwel Solar PV Application Site
 - Grid Connection Assessment Corridors
 - Proposed On-Site Substations

A wide-angle photograph of a dry, open landscape with rolling hills and sparse vegetation under a clear blue sky.

ENVIRONMENTAL IMPACT ASSESSMENTS (EIAs) AND BASIC ASSESSMENTS (BAs) FOR THE PROPOSED DEVELOPMENT OF THREE (3) SOLAR PHOTOVOLTAIC (PV) ENERGY FACILITIES AND ASSOCIATED GRID INFRASTRUCTURE NEAR NOUPOORT AND MIDDELBURG IN THE NORTHERN AND EASTERN CAPE PROVINCES

- Mooi Plaats Solar PV
- Wonderheuvel Solar PV
- Paarde Valley Solar PV
- Mooi Plaats Grid
- Wonderheuvel Grid
- Paarde Valley Grid

DEA Ref Nos: (To be provided)

INTRODUCTION

EDF Renewables (Pty) Ltd (hereafter referred to as “EDF”) is proposing to develop three (3) adjacent Solar Photovoltaic (PV) Energy Facilities and associated grid infrastructure as part of the greater Umsobomvu PV project near Noupoort and Middelburg in the Northern and Eastern Cape Provinces of South Africa. While both the Mooi Plaats and Wonderheuvel facilities are located in the Umsobomvu Local Municipality, in the Pixley ka Seme District Municipality of the Northern Cape Province, the Paarde Valley facility is located in the Inxuba Yethemba Local Municipality, in the Chris Hani District Municipality of the Eastern Cape Province.

In order to accommodate the Department of Energy’s (DoE) competitive bidding process for procuring renewable energy from Independent Power Producers in South Africa, each Solar PV facility will require a separate Environmental Authorisation (EA). As such, each of the proposed PV Facilities and associated grid infrastructure is the subject of a full Environmental Impact Assessment (EIA) process in terms of the National Environmental Management Act, 1998 (Act No. 107 of 1998) (NEMA) as amended.

Accordingly, EDF has appointed SiVEST SA (Pty) Ltd (hereafter referred to as “SiVEST”) as the independent Environmental Assessment Practitioner (EAP), to undertake the required EIA process.

PURPOSE OF THIS DOCUMENT

The purpose of this Background Information Document (BID) is to inform Interested and/or Affected Parties (I&APs) about the EIA process that is being conducted for the proposed Solar PV Facilities.

In addition, this BID will also provide I&APs with the opportunity to:

- Better understand the proposed development to provide comments and raise issues of concern;
- Understand the EIA process to participate effectively;
- Make suggestions to enhance the proposed development;
- Comment on the EIA and the specialist studies that will be conducted; and
- Contribute to local knowledge.

BACKGROUND TO THE PROPOSED PROJECT

In support of the need to find solutions for the current electricity shortages and the increasing demand for energy, as well as the need to find more sustainable and environmentally friendly energy resources, South Africa has embarked on an infrastructure growth programme supported by various government initiatives. In response to this goal; EDF is proposing to develop three (3) Solar PV Energy Facilities near Noupoort in the Northern and Eastern Cape Provinces. The overall objective of these projects is to generate electricity by means of renewable energy technologies and to feed into the national grid.

SOLAR PV COMPONENTS

The three Solar PV facilities will include the following components:

- PV fields (arrays) comprising multiple PV panels. The number of panels, the generation capacity of each facility and the layout of the arrays will be dependent on the outcome of the specialist studies conducted during the EIA process.
- PV panels will be either fixed tilt mounting or single axis tracking mounting, and the modules will be either crystalline silicon or thin film technology. Each panel will be approximately 2m wide and between 1m and 4m in height, depending on the mounting type.
- Internal roads, between 4m and 10m wide, will provide access to the PV arrays. Existing site roads will be used wherever possible, although new site roads will be constructed where necessary.
- Each PV facility will include up to two (2) temporary construction laydown/staging areas of approximately 10ha each.
- Operation and maintenance (O&M) buildings will be provided for each PV field, occupying a site of approximately 2 500m² (50m x 50m).
- Medium voltage cabling will link the PV plant to the grid connection infrastructure. These cables will be laid underground wherever technically feasible.

GRID CONNECTION INFRASTRUCTURE

The proposed grid connection infrastructure for each PV facility is being assessed as part of a separate BA process. The grid infrastructure will include the following components:

- New on-site substations and collector substations to serve each PV facility, each occupying an area of up to 4ha.
- A new 132kV overhead power line connecting the on-site substations or collector substations to either Hydra D Main Transmission Substation (MTS) or the proposed Coleskop Wind Energy Facility (WEF) substation from where the electricity will be fed into the national grid.

PROJECT LOCATION

The three (3) PV facilities and associated grid infrastructure are located approximately 18km south-west of Noupoot and approximately 21km north-west of Middelburg, in the Umsobomvu and Inxuba Yethemba Local Municipalities of the Northern and

Eastern Cape Provinces respectively, as shown in the map overleaf.

EIA / BA PROCESS

What is an EIA?

An EIA is a process of collecting, organising, analysing, interpreting and communicating information relevant to a proposed development to identify potential environmental impacts. This information provides the Competent Authority (the DEA) with a sound basis for their decision-making regarding Environmental Authorisation (EA).

What is a BA?

An BA is a similar process to an EIA, but is undertaken where the impacts are less likely to have significant impacts on the receiving environment. Like EIAs, BAs identify potential environmental impacts and provide the Competent Authority with a sound basis for their decision-making.

Legal requirements

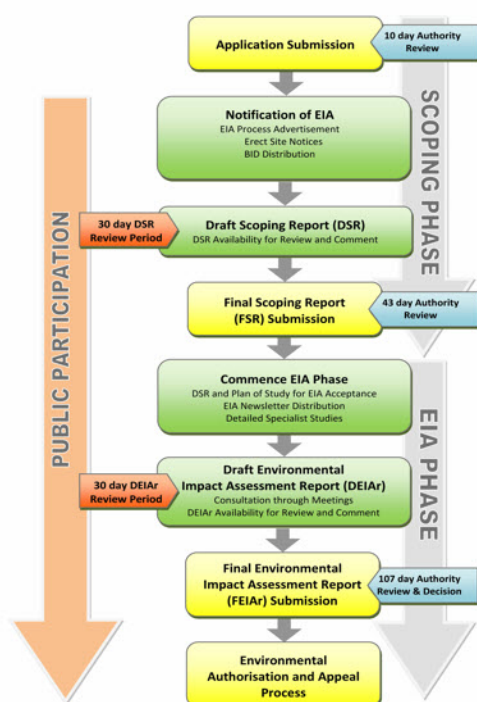
According to the NEMA (as amended), an EIA process is required for the proposed solar PV energy facilities as several listed notice 2 activities (GN R. 984 as amended) are triggered by each proposed project. A BA process is required for the associated grid infrastructure as several listed notice 1 activities (GN R. 983 as amended) are triggered by each proposed project.

The EIA and BA processes that will be followed are illustrated in the Figures below.

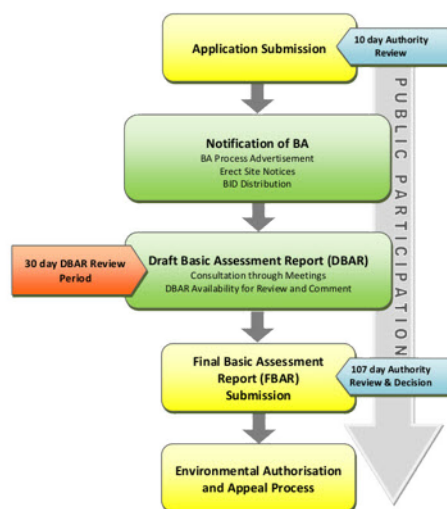
The ultimate purpose of the EIA process is to identify environmental issues and impacts associated with the proposed activity and to assess the significance of these impacts. The following specialist studies will inform this process:

- Agricultural and Soils
- Avifauna
- Ecology (Fauna and Flora)
- Geotechnical
- Heritage and Palaeontology
- Socio-Economic
- Surface Water
- Traffic

ENVIRONMENTAL IMPACT ASSESSMENT PROCESS



BASIC ASSESSMENT PROCESS



HOW TO BECOME INVOLVED

Public participation is the cornerstone of any EIA / BA, with the key objective being to ensure that all interested and affected parties (including Organs of State/Authorities) are afforded the opportunity to participate in the EIA process and have access to all relevant information and documents related to the proposed development.

Public notification of the EIA / BA process will include the following:

- Advertisements will be placed in a local newspaper;
- Distribution of a Background Information Document (BID);
- Notifications in the form of emails, post, fax and SMS where applicable;
- Site notices will be placed on the development site; and
- All relevant documentation will be made available online and in public libraries .

In addition, the relevant reports will be made available for public review and comment and public/focus group meetings will be held.

If you wish to register as an I&AP, you can do so by the following methods:

- Respond (by phone, fax, post or e-mail) to the invitation advertised in the printed media;
- Attend the meetings to be held during the course of the project. Should you register as an I&AP you will automatically receive an invitation to these meetings;
- Contact us (by phone, fax, post or e-mail) with any queries, comments or requests for further project information; and
- Submit comments on the Draft Scoping/Environmental Impact Reports (DSRs/DBARs/DEIRs) within the review periods that will be stipulated.

If you consider yourself an I&AP for this proposed project, we urge you to make use of the opportunities created by the public participation process to become actively involved in the process and provide comment or concerns which affect and/or interest you, or about which you would like more information. Your input into this process forms a key part of the environmental studies and we would like to hear from you to obtain your views on the proposed project.

Please be informed that all relevant public documents can be downloaded during the review periods from SiVEST's website.

The SiVEST logo consists of the word "SiVEST" in white, bold, sans-serif capital letters on a red rectangular background. To the right of the text is a graphic of several orange circles of varying sizes arranged in a cluster.

We look forward to your contributions

Contact: Hlengiwe Ntuli

 PO Box 2921, RIVONIA, 2128

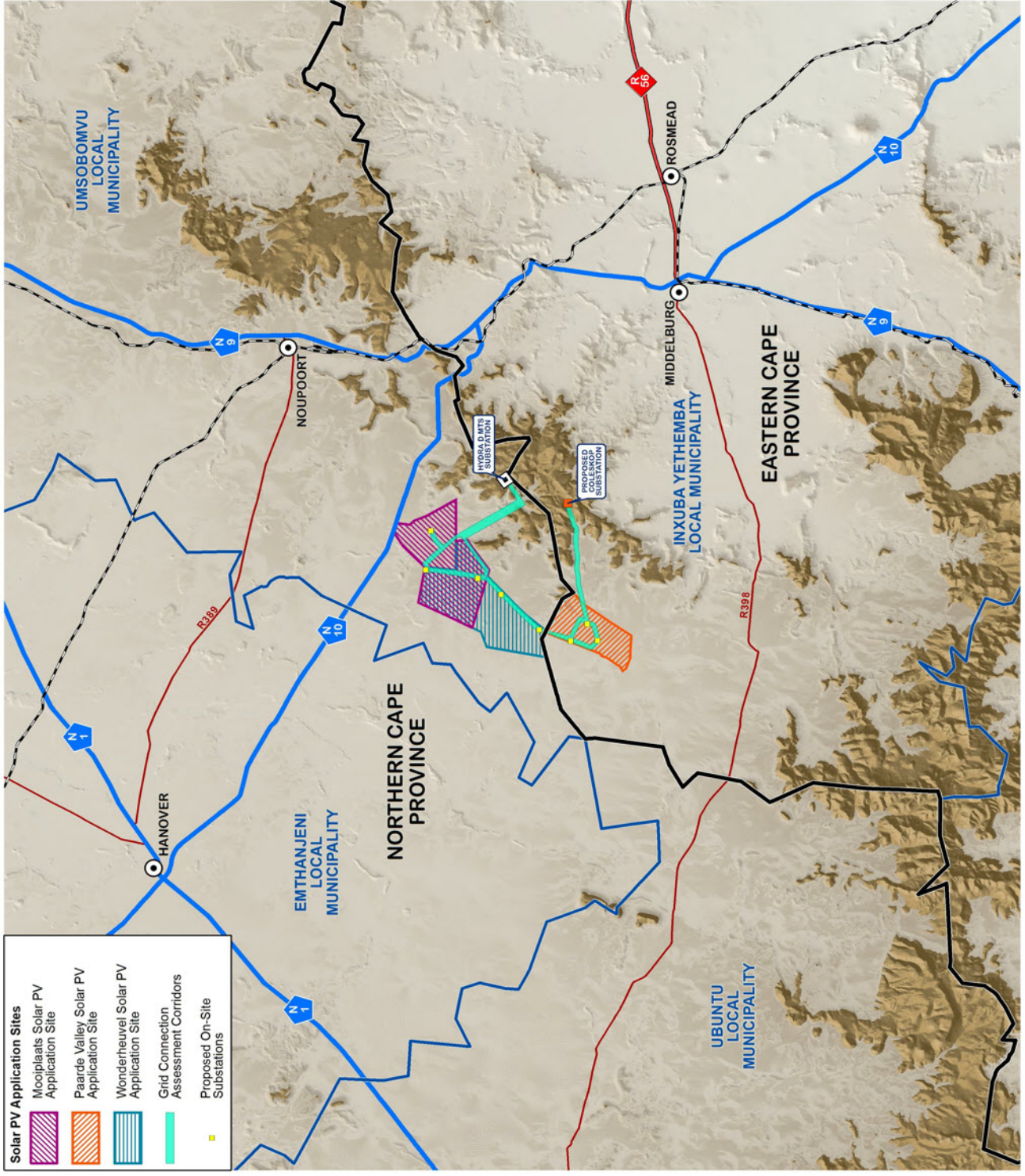
 Phone: (011) 798 0600

 E-mail: hlengiwen@sivest.co.za /
sivest_ppp@sivest.co.za

 Fax: (011) 803 7272

Website: www.sivest.co.za

Locality Map



Solar PV Application Sites

- Mooiplaats Solar PV Application Site
- Paarde Valley Solar PV Application Site
- Wonderheuwel Solar PV Application Site
- Grid Connection Assessment Corridors
- Proposed On-Site Substations

PROPOSED CONSTRUCTION OF THREE SOLAR PHOTOVOLTAIC (PV) ENERGY FACILITIES NEAR NOUPOORT, NORTHERN AND EASTERN CAPE PROVINCES REGIONAL CONTEXT

Legend

- Provincial Boundary
- Local Municipal Boundaries
- National Routes
- Main Arterial Routes
- Main Roads
- Railways
- Main Towns
- Hydra D MTS Substation
- Proposed Coleskop WEF Substation

SOURCE: MUNICIPAL DEMARCATION BOARD, 2011

SIVEST
 ENVIRONMENTAL DIVISION
 51 WESSEL'S ROAD
 SOMERSETBURG
 NORTHERN CAPE PROVINCE
 SOUTH AFRICA
 Phone: +27 11 803 9772
 e-mail: sivist@siwest.co.za

Project No: 15324
 Date: 20/05/2019

Map Ref No: 15324BID_01
 Revision: 0
 Date:

*COPYRIGHT IS VESTED IN SIVEST IN TERMS OF THE COPYRIGHT ACT OF 1978. NO PART OF THIS DOCUMENT MAY BE REPRODUCED OR TRANSMITTED IN ANY FORM OR BY ANY MEANS, ELECTRONIC OR MECHANICAL, INCLUDING PHOTOCOPYING, RECORDING, OR BY ANY INFORMATION STORAGE AND RETRIEVAL SYSTEM, WITHOUT THE WRITTEN CONSENT OF THE AUTHOR.

THIS MAP HAS BEEN PREPARED UNDER THE CONTROLS ESTABLISHED BY THE SIVEST QUALITY MANAGEMENT SYSTEM WHICH HAS BEEN CERTIFIED ISO 9001:2008 COMPLIANT



Appendix 7C
Proof of Advertisements

Ten first-timers take on Mountain Driver parkrun

Paula-Ann Smit

Out of the 63 people who took on the challenging Mountain Drive parkrun on Saturday, 10 ran or walked the route for the first time.

Twelve joggers also managed to clock new person bests.

Ethan Bantom was the first male runner to cross the finish line, with a time of 24:51. Lauren Stanley was first in the women's category, with her time of 30:43.

The female record is held by Alicia Cawood, who recorded a time of 22:50 on 9 March, while the male record is held by Ian Slinger, who recorded a time of 17:01 on 6 April.

Saturday's event was made possible by nine volunteers:

Mike Calitz, Kim Spencer Primic, Lusan Luscombe, Rozelle Köhne, Peter Burdett, Jacqueline Taylor-Freeme, Shirley Spencer, Waune Gradwell and Marna Gerber.



Chirano van Heerden

Chirano now award-winning SA umpire

Paula-Ann Smit

A member of the Sarah Baartman Netball Association is now a national level and award-winning umpire.

Chirano van Heerden recently received his South Africa C+ grading. He also received an award for his work as umpire in a national final in Cape Town between teams eThekweni and Harry Gwala.

His association and community are proud of him.



Gimnaste vaar goed

Christo Vermaak

Plaaslike gimnaste het by die South Zone-gimnastiekampioenskappe in Uitenhage die medaljes behoorlik ingeryg.

Die kampioenskappe het van 21 tot 23 Junie plaasgevind.

Wes Kaap, Oos Kaap en Noord Kaap het aan die kampioenskap deelgeneem, wat slegs vir vlak 1 tot 3 artistiese gimnaste bedoel is.



Gimnaste van Graaff-Reinet en omgewing het as volg presteer:

Vlak 1

Mia Keevy (brons), Alison Orwin (brons), Elani Ferreira (silwer), Carike de Gouveia (brons), Clara Burton (brons), Joslyn Jordaan (silwer), Jana Neetling (silwer), Sophia Louw (silwer), Zoe Hatting (silwer) en Lara Greeff (silwer).

Vlak 2

Janine Coetzer (brons), Ju-Netje le Roux (silwer), Tiaan Fourie (brons), en AJ Cronje (brons).

Vlak 3

Marisa Loubser (goud), Anja Loubser (silwer) en Henco van Niekerk (brons).



STATE AUCTION

NO RESERVE

WEDNESDAY 10 JULY 2019 @ 11H00
VIEWING: 9 July 2019 between 10h00 - 15h00
VENUE: 2 Fabriek Street, GRAAFF-REINET
AUCTION LOTS: TRUCKS, TRAILERS, BAKKIES, CARS AND LOOSE ASSETS
AUCTION HALL: Alex Laing Hall, Cnr of Mossie & Acasia Street, KROONVALE, GRAAFF-REINET.



Auctioneer: Martin Nel 082 771 7947 | info@auction-all.com
R5 000 Deposit, proof of residence and copy of ID to register as bidder.
Buyers premium & administration fee's apply
General auction rules applicable.
www.auction-all.com

SIVEST Environmental Division

SIVEST
Geestig in 1952

ENVIRONMENTAL IMPACT ASSESSMENTS (EIAs) FOR THE PROPOSED DEVELOPMENT OF THE THREE (3) SOLAR PHOTOVOLTAIC (PV) ENERGY FACILITIES AND BASIC ASSESSMENTS (BAs) FOR THE ASSOCIATED GRID CONNECTION INFRASTRUCTURE NEAR NOUPOORT AND MIDDELBURG IN THE NORTHERN AND EASTERN CAPE PROVINCES (DEA REFERENCE NUMBERS TO BE ANNOUNCED)

In terms of the National Environmental Management Act, 1998 (Act No. 107 of 1998) (NEMA) (as amended) and the Environmental Impact Assessment (EIA) Regulations, 2014 (as amended), under Government Notices R982, R983, R984 and R985 (as amended), notice is hereby given that EDF Renewables (Pty) Ltd (hereafter referred to as "EDF") have appointed SIVEST SA (Pty) Ltd, as the independent Environmental Assessment Practitioner (EAP), to undertake the required EIA, Basic Assessment (BA) and Public Participation processes for the below-mentioned proposed developments.

PROJECT DESCRIPTION

EDF is proposing to develop three (3) adjacent solar photovoltaic (PV) energy facilities and associated infrastructure near Noupoot and Middelburg in the Northern and Eastern Cape Provinces. The proposed solar PV energy facilities will be known as Mooi Plaats Solar PV, Wonderheuvel Solar PV and Paarde Valley Solar PV. In addition, EDF is proposing to construct three (3) 132kV overhead power lines and associated grid infrastructure (hereafter referred to as "the grid connections"), in order to feed the electricity generated by each solar PV energy facility into the national grid.

In order to accommodate the Department of Energy's (DoE) competitive bidding process for procuring renewable energy from Independent Power Producers (IPPs) in South Africa, each solar PV energy facility will require a separate Environmental Authorisation (EA). Additionally, each grid connection will also require a separate EA.

In light of the above, three (3) EIAs (one (1) for each proposed solar PV energy facility) and three (3) BAs (one (1) for each associated grid connection) will be undertaken. Although each solar PV energy facility and the associated grid connection will be assessed separately, a single public participation process is being undertaken for all six (6) proposed applications. The potential environmental impacts associated with all six (6) proposed developments will be assessed during the EIAs and BAs as part of a cumulative impact assessment.

The generation capacity of each solar PV facility and the layout of the PV arrays will be dependent on the outcome of the specialist studies conducted during the EIA process.

PROJECT LOCATION

The three (3) proposed solar PV energy facilities and grid infrastructure projects are located approximately 18km south-west of Noupoot and approximately 21km north-west of Middelburg, in the Northern and Eastern Cape Provinces respectively. While both the Mooi Plaats and Wonderheuvel Solar PV Energy Facilities are located in the Umsobomvu Local Municipality, in the Pixley ka Seme District Municipality of the Northern Cape Province, the Paarde Valley Solar PV Energy Facility is located in the Inxuba Yethemba Local Municipality, in the Chris Hani District Municipality of the Eastern Cape Province.

To register as an Interested and/or Affected Party (I&AP) and/or to obtain additional information, please submit your name, contact details and the interest which you have in the applications to SIVEST as per the details below:

Hlengiwe Ntuli or Stephan Jacobs	
SIVEST Environmental P O Box 2921 RIVONIA 2128	Tel: (011) 798 0600 Fax: (011) 803 7272 E-mail: stephanj@sivest.co.za / hlengiwenn@sivest.co.za / sivest_ppp@sivest.co.za Website: www.sivest.co.za

SIVEST Omgewingsafdeling

SIVEST
Geestig in 1952

OMGEWINGSIMPAKEVALUERINGS (OIE's) VIR DIE BEOOGDE ONTWIKKELING VAN DIE DRIE (3) FOTOVOLTAÏESE (FV) SONKRAGAAANLEGTE EN BASIESE EVALUERINGS (BE's) VIR DIE GEPAARDGAANDE ROOSTERKONNEKSIE-INFRASTRUKTUUR NABY NOUPOORT EN MIDDELBURG IN DIE NOORD- EN OOS-KAAPROVINSIE (DO-VERWYSINGSNOMMERS MOET NOG AANGEKONDIG WORD)

Ingevolge die Nasionale Wet op Omgewingsbestuur, 1998 (Wet 107 van 1998) (NEMA) (soos gewysig) en die Regulasies op Omgewingsimpevaluering (OIE-regulasies), 2014 (soos gewysig), kragtens Staatskenningsgewing R982, R983, R984 en R985 (soos gewysig), geskied kennis hiermee dat EDF Renewables (Edms.) Bpk. (hierna "EDF" genoem) SIVEST SA (Edms.) Bpk. aangestel het as die onafhanklike Omgewingsimpevaluering (OIE), Basiese Evaluering (BE) en Openbare Deelnameprosesse vir die onderstaande beoogde ontwikkelings te onderneem.

PROJEK BESKRYWING

EDF beoog die ontwikkeling van drie (3) aangrensende fotovoltaïese (FV) sonkragaanlegte en gepaardgaande infrastruktuur naby Noupoot en Middelburg in die Noord- en Oos-Kaapprovinsie. Die beoogde FV-sonkragaanlegte sal die Mooi Plaats FV, Wonderheuvel FV- en Paarde Valley FV-sonkragaanleg heet. Voorts beoog EDF ook die oprigting van drie (3) 132 kV oorhoofse kraglyne en gepaardgaande roosterinfrastruktuur (hierna die "roosterkonneksies" genoem) ten einde die krag wat by elk van die FV-sonkragaanlegte opgewek word, by die nasionale kragnet in te voer.

Ten einde aan die Departement van Energie (DE) se mededingende bodproses vir die verkryging van hernubare krag van Onafhanklike Kragprodusente (IPP's) in Suid-Afrika te voldoen, sal elk van die FV-sonkragaanlegte 'n aparte Omgewingsmagtiging (OM) moet bekom. Elke roosterkonneksie sal ook 'n aparte OM moet bekom.

Met inagneming van die bogenoemde, sal drie (3) OIE's (een (1) vir elke beoogde FV-sonkragaanleg) en drie (3) BE's (een (1) vir elke gepaardgaande roosterkonneksie) onderneem word. Hoewel elke FV-sonkragaanleg en die gepaardgaande roosterkonneksie apart geëvalueer sal word, sal 'n enkele openbare deelnameproses vir al ses (6) die beoogde aansoeke onderneem word. Die potensiele omgewingsimpakte wat met al ses (6) beoogde ontwikkelings verband hou, sal tydens die OIE's en BE's as deel van 'n kumulatiewe impakevaluering geëvalueer word.

Die opwekkingsvermoe van elk van die FV-sonkragaanlegte en die uitleg van die FV-reeks sal afhang van die uitkoms van die spesialisstudies wat tydens die OIE-proses onderneem word.

PROJEK LIGGING

Die drie (3) beoogde FV-sonkragaanleg- en roosterinfrastruktuurprojekte is sowat 18 km suidwes van Noupoot en sowat 21 km noordwes van Middelburg in onderskeidelik die Noord- en Oos-Kaapprovinsie geleë. Hoewel beide die Mooi Plaats en Wonderheuvel FV-sonkragaanlegte in die Umsobomvu Plaaslike Munisipaliteit in die Pixley ka Seme Distriksmunisipaliteit van die Noord-Kaapprovinsie geleë is, is die Paarde Valley FV-sonkragaanleg in die Inxuba Yethemba Plaaslike Munisipaliteit in die Chris Hani Distriksmunisipaliteit van die Oos-Kaapprovinsie geleë.

Om as 'n Belangstellende en/of Geëffekteerde Party (B&GP) te registreer en/of om meer inligting te bekom, moet u asseblief u naam, kontakbesonderhede en die belang wat u by die aansoek het by SIVEST by die onderstaande kontakbesonderhede indien:

Hlengiwe Ntuli of Stephan Jacobs	
SIVEST Environmental Posbus 2921 RIVONIA 2128	Tel: 011 798 0600 Faks: 011 803 7272 E-pos: stephanj@sivest.co.za / hlengiwenn@sivest.co.za / sivest_ppp@sivest.co.za Webwerf: www.sivest.co.za



Appendix 7D

Correspondence



**Appendix 7D1
Correspondence
From Authorities**

Stephan Jacobs

From: Phillip Hine <phine@sahra.org.za>
Sent: Thursday, 06 June 2019 3:09 PM
To: Stephan Jacobs
Cc: Andrea Gibb; Hlengiwe Ntuli
Subject: RE: Request for Assistance with Notice of Intent Form Template and Provincial Authority Contacts

Follow Up Flag: Follow up
Flag Status: Flagged

Dear Mr Jacobs,

SAHRA does not have a Notification of Intent to Develop form. Please make use of the South African Heritage Resources Information System, <https://sahris.sahra.org.za/> when lodging an application with SAHRA.

For Eastern Cape please contact:

Africa Maxongo
Heritage Officer: Built Environment
043 6422811
nmaxongo@ecphra.org.za
"Dept of Public Works Complex
Corner of Amalinda and Scholl Road
Cambridge, East London 5206"

For Northern Cape please contact:

Ratha Timothy
0538312537
ratha.timothy@gmail.com

Kind Regards,

From: Stephan Jacobs <StephanJ@sivest.co.za>
Sent: 06 June 2019 02:09 PM
To: Phillip Hine <phine@sahra.org.za>
Cc: Andrea Gibb <AndreaG@sivest.co.za>; Hlengiwe Ntuli <HlengiweN@sivest.co.za>
Subject: FW: Request for Assistance with Notice of Intent Form Template and Provincial Authority Contacts
Importance: High

Good Afternoon Mr Hine,

The email below refers.

I sent this email to Natasha Higgitt but received an out of office message stating that we should contact you for any urgent matters.

Could you perhaps assist with this?

Please do not hesitate to contact me should you have any queries or should you wish to discuss this.

Kind Regards,

Stephan Jacobs *(B.Sc. (Hons) Environmental Management and Analysis)*

Environmental Consultant / Visual Specialist
SiVEST Environmental Division



SiVEST is a Level 3 BBBEE Contributor

D +27 11 798 0677 | **T** +27 011 798 0600 | **M** +27 72 737 2114 **E** stephanj@sivest.co.za | **W** www.sivest.co.za

Engineering Consulting | Project Management | Environmental Consulting | Town & Regional Planning | Management Systems Consulting
Durban | Johannesburg | Pretoria | Pietermaritzburg | Richards Bay | Port Louis (Mauritius)

From: Stephan Jacobs
Sent: Thursday, 06 June 2019 2:05 PM
To: 'Natasha Higgitt' <nhiggitt@sahra.org.za>
Cc: Andrea Gibb <AndreaG@sivest.co.za>; Hlengiwe Ntuli <HlengiweN@sivest.co.za>
Subject: Request for Assistance with Notice of Intent Form Template and Provincial Authority Contacts
Importance: High

Good Afternoon Ms/Mrs Higgitt,

I trust you are well.

SiVEST are in the process of compiling DEA application forms for EIA processes which we are planning on undertaking for Renewable Energy (RE) projects in the Northern and Eastern Cape provinces and came across the following statement:

"If Section 38 of the National Heritage Resources Act (Act No. 25 of 1999) is applicable to your proposed development, you are requested to submit the Notice of Intent form to the relevant SAHRA or a Provincial Heritage Resources Authority and attach a copy to this form."

In light of this, does SAHRA perhaps have a Notice of Intent Form Template which we could make use of, or know where we can find one? We have only ever encountered this for Heritage Western Cape (HWC) and thus are not certain where to find a template of this.

Also, can you please confirm who the Northern Cape and Eastern Cape Provincial Heritage Resources Authorities would be?

I did some research and found that the provincial authority for the EC is the Eastern Cape Provincial Heritage Resources Agency (ECPHRA). Is this correct? For the Northern Cape Province, Ngwao Boswa Kapa Bokone (commonly known as 'Boswa') seems to be the provincial heritage authority. Could you kindly please confirm whether this is correct or if all heritage related matters in the Northern Cape should go straight to SAHRA?

Your assistance will be greatly appreciated.

Do not hesitate to contact me should you have any queries or should you wish to discuss this.

Kind Regards,

Stephan Jacobs (B.Sc. (Hons) Environmental Management and Analysis)

Environmental Consultant / Visual Specialist

SiVEST Environmental Division



SiVEST is a Level 3 BBBEE Contributor

D +27 11 798 0677 | **T** +27 011 798 0600 | **M** +27 72 737 2114 **E** stephanj@sivest.co.za | **W** www.sivest.co.za

Engineering Consulting | Project Management | Environmental Consulting | Town & Regional Planning | Management Systems Consulting

Durban | Johannesburg | Pretoria | Pietermaritzburg | Richards Bay | Port Louis (Mauritius)

Disclaimer

The information contained in this communication from the sender is confidential. It is intended solely for use by the recipient and others authorized to receive it. If you are not the recipient, you are hereby notified that any disclosure, copying, distribution or taking action in relation of the contents of this information is strictly prohibited and may be unlawful.

This email has been scanned for viruses and malware, and automatically archived by **Mimecast SA (Pty) Ltd**, an innovator in Software as a Service (SaaS) for business. **Mimecast Unified Email Management ??? (UEM)** offers email continuity, security, archiving and compliance with all current legislation. To find out more, [contact Mimecast](#).

Phillip Hine

Acting Manager: APM

South African Heritage Resources Agency

- A nation united through heritage -

T: +27 21 4624502 /8652 or +27 21 202 8652| **C:**+27 83 793 3852| **F:**+27 21 462 4509

E: PHine@sahra.org.za | 111 Harrington Street | Cape Town |

www.sahra.org.za



an agency of the
Department of Arts and Culture

OUR VALUES: Accountability, Teamwork & co-operation, Respect, Transparency, Service Excellency, Integrity & Ethics, Professionalism, Accessibility, Communication & Trust.

BREAK THE CORRUPTION CHAIN
REPORT FRAUD & CORRUPTION: 0800 701 701



an agency of the
Department of Arts and Culture

UNMASK THE CORRUPT



Stephan Jacobs

From: Natasha Higgitt <niggitt@sahra.org.za>
Sent: Friday, 07 June 2019 11:38 AM
To: Stephan Jacobs
Cc: Andrea Gibb; Hlengiwe Ntuli
Subject: RE: Request for Assistance with Notice of Intent Form Template and Provincial Authority Contacts

Follow Up Flag: Follow up
Flag Status: Flagged

Good morning,

With regards to the section 38 development application process, only developments that are applied for in terms of section 38(1) of the NRHA require that the relevant Heritage Resources Authority is notified at the earliest phase via a NID document. HWC has a form, however, if an application to SAHRA is submitted via SAHRIS, the SAHRIS application acts as a NID document. Other documents such as project motivation and map etc. can be uploaded as additional documents.

If the application is being conducted in terms of section 38(8) of the NHRA, then no NID is required as 38(1) does not apply when a 38(8) process is undertaken. Here we require the BID or announcement letter, the draft BAR and appendices, or the draft scoping with appendices, and draft EIA with appendices to provide comments.

With regards to the Northern Cape Provincial Heritage Resources Authority (<http://www.nbkb.org.za/>), the NCPHRA does not have the authority to provide comments on section 38 application with the exception that if a structure as defined and protected by section 34 is impacted, then the NCPHRA must be consulted for comments. All section 38(1) and 38(8) cases for the Northern Cape are processed by SAHRA via SAHRIS.

The Eastern Cape Provincial Heritage Resources Authority has been assessed to be competent to perform all function of the NHRA and therefore all section 38(1) and 38(8) application in the EC are process by the ECPHRA. They do not use SAHRIS and must be contacted directly. Please see the contact details for Sello Mokhanya (smokhanya@ecphra.org.za).

I hope this is helpful.

Kind regards,

From: Stephan Jacobs <StephanJ@sivest.co.za>
Sent: Thursday, June 06, 2019 2:05 PM
To: Natasha Higgitt <niggitt@sahra.org.za>
Cc: Andrea Gibb <AndreaG@sivest.co.za>; Hlengiwe Ntuli <HlengiweN@sivest.co.za>
Subject: Request for Assistance with Notice of Intent Form Template and Provincial Authority Contacts
Importance: High

Good Afternoon Ms/Mrs Higgitt,

I trust you are well.

SiVEST are in the process of compiling DEA application forms for EIA processes which we are planning on undertaking for Renewable Energy (RE) projects in the Northern and Eastern Cape provinces and came across the following statement:

“If Section 38 of the National Heritage Resources Act (Act No. 25 of 1999) is applicable to your proposed development, you are requested to submit the Notice of Intent form to the relevant SAHRA or a Provincial Heritage Resources Authority and attach a copy to this form.”

In light of this, does SAHRA perhaps have a Notice of Intent Form Template which we could make use of, or know where we can find one? We have only ever encountered this for Heritage Western Cape (HWC) and thus are not certain where to find a template of this.

Also, can you please confirm who the Northern Cape and Eastern Cape Provincial Heritage Resources Authorities would be?

I did some research and found that the provincial authority for the EC is the Eastern Cape Provincial Heritage Resources Agency (ECPHRA). Is this correct? For the Northern Cape Province, Ngwao Boswa Kapa Bokone (commonly known as 'Boswa') seems to be the provincial heritage authority. Could you kindly please confirm whether this is correct or if all heritage related matters in the Northern Cape should go straight to SAHRA?

Your assistance will be greatly appreciated.

Do not hesitate to contact me should you have any queries or should you wish to discuss this.

Kind Regards,

Stephan Jacobs *(B.Sc. (Hons) Environmental Management and Analysis)*
Environmental Consultant / Visual Specialist
SiVEST Environmental Division



SiVEST is a Level 3 BBBEE Contributor

D +27 11 798 0677 | **T** +27 011 798 0600 | **M** +27 72 737 2114 **E** stephanj@sivest.co.za | **W** www.sivest.co.za

Engineering Consulting | Project Management | Environmental Consulting | Town & Regional Planning | Management Systems Consulting

Durban | Johannesburg | Pretoria | Pietermaritzburg | Richards Bay | Port Louis (Mauritius)

Disclaimer

The information contained in this communication from the sender is confidential. It is intended solely for use by the recipient and others authorized to receive it. If you are not the recipient, you are hereby notified that any disclosure, copying, distribution or taking action in relation of the contents of this information is strictly prohibited and may be unlawful.

This email has been scanned for viruses and malware, and automatically archived by **Mimecast SA (Pty) Ltd**, an innovator in Software as a Service (SaaS) for business. **Mimecast Unified Email Management ??? (UEM)** offers email continuity, security, archiving and compliance with all current legislation. To find out more, [contact Mimecast](#).

Natasha Higgitt

Heritage Officer: Archaeology, Palaeontology and Meteorites Unit

South African Heritage Resources Agency

- A nation united through heritage -

T: +27 21 462 4502/ 8660 | C: +27 82 507 0378 | F: +27 21 462 4509
E: nhiggitt@sahra.org.za | 111 Harrington Street | Cape Town |

www.sahra.org.za



an agency of the
Department of Arts and Culture

OUR VALUES: Accountability, Teamwork & co-operation, Respect, Transparency, Service Excellency, Integrity & Ethics, Professionalism, Accessibility, Communication & Trust.

BREAK THE CORRUPTION CHAIN
REPORT FRAUD & CORRUPTION: 0800 701 701



an agency of the
Department of Arts and Culture





**Appendix 7D2
Correspondence
To Authorities**

Stephan Jacobs

From: Stephan Jacobs
Sent: Thursday, 06 June 2019 2:05 PM
To: 'Natasha Higgitt'
Cc: Andrea Gibb; Hlengiwe Ntuli
Subject: Request for Assistance with Notice of Intent Form Template and Provincial Authority Contacts

Importance: High

Follow Up Flag: Follow up
Flag Status: Flagged

Tracking:	Recipient	Delivery
	'Natasha Higgitt'	
	Andrea Gibb	Delivered: 2019/06/06 2:05 PM
	Hlengiwe Ntuli	Delivered: 2019/06/06 2:05 PM

Good Afternoon Ms/Mrs Higgitt,

I trust you are well.

SiVEST are in the process of compiling DEA application forms for EIA processes which we are planning on undertaking for Renewable Energy (RE) projects in the Northern and Eastern Cape provinces and came across the following statement:

"If Section 38 of the National Heritage Resources Act (Act No. 25 of 1999) is applicable to your proposed development, you are requested to submit the Notice of Intent form to the relevant SAHRA or a Provincial Heritage Resources Authority and attach a copy to this form."

In light of this, does SAHRA perhaps have a Notice of Intent Form Template which we could make use of, or know where we can find one? We have only ever encountered this for Heritage Western Cape (HWC) and thus are not certain where to find a template of this.

Also, can you please confirm who the Northern Cape and Eastern Cape Provincial Heritage Resources Authorities would be?

I did some research and found that the provincial authority for the EC is the Eastern Cape Provincial Heritage Resources Agency (ECPHRA). Is this correct? For the Northern Cape Province, Ngwao Boswa Kapa Bokone (commonly known as 'Boswa') seems to be the provincial heritage authority. Could you kindly please confirm whether this is correct or if all heritage related matters in the Northern Cape should go straight to SAHRA?

Your assistance will be greatly appreciated.

Do not hesitate to contact me should you have any queries or should you wish to discuss this.

Kind Regards,

Stephan Jacobs (B.Sc. (Hons) Environmental Management and Analysis)
Environmental Consultant / Visual Specialist
SiVEST Environmental Division



SiVEST is a Level 3 BBBEE Contributor

D +27 11 798 0677 | **T** +27 011 798 0600 | **M** +27 72 737 2114 **E** stephanj@sivest.co.za | **W** www.sivest.co.za

Engineering Consulting | Project Management | Environmental Consulting | Town & Regional Planning | Management Systems Consulting

Durban | Johannesburg | Pretoria | Pietermaritzburg | Richards Bay | Port Louis (Mauritius)

Stephan Jacobs

From: Stephan Jacobs
Sent: Thursday, 06 June 2019 5:06 PM
To: 'Phillip Hine'
Cc: Andrea Gibb; Hlengiwe Ntuli
Subject: RE: Request for Assistance with Notice of Intent Form Template and Provincial Authority Contacts

Follow Up Flag: Follow up
Flag Status: Flagged

Good Afternoon Mr Hine,

Thank you very much for your response.

Noted, thank you for clarifying. We will make use of the South African Heritage Resources Information System (SAHRIS) as suggested.

Thank you for the contact details for the respective provincial departments. We will make sure to contact them.

Thank for your assistance in this regard. It is greatly appreciated.

Kind Regards,

Stephan Jacobs (*B.Sc. (Hons) Environmental Management and Analysis*)
Environmental Consultant / Visual Specialist
SiVEST Environmental Division



SiVEST is a Level 3 BBBEE Contributor

D +27 11 798 0677 | **T** +27 011 798 0600 | **M** +27 72 737 2114 **E** stephanj@sivest.co.za | **W** www.sivest.co.za

Engineering Consulting | Project Management | Environmental Consulting | Town & Regional Planning | Management Systems Consulting

Durban | Johannesburg | Pretoria | Pietermaritzburg | Richards Bay | Port Louis (Mauritius)

From: Phillip Hine [mailto:phine@sahra.org.za]
Sent: Thursday, 06 June 2019 3:09 PM
To: Stephan Jacobs <StephanJ@sivest.co.za>
Cc: Andrea Gibb <AndreaG@sivest.co.za>; Hlengiwe Ntuli <HlengiweN@sivest.co.za>
Subject: RE: Request for Assistance with Notice of Intent Form Template and Provincial Authority Contacts

Dear Mr Jacobs,

SAHRA does not have a Notification of Intent to Develop form. Please make use of the South African Heritage Resources Information System, <https://sahris.sahra.org.za/> when lodging an application with SAHRA.

For Eastern Cape please contact:

Africa Maxongo
Heritage Officer: Built Environment
043 6422811
nmaxongo@ecphra.org.za
"Dept of Public Works Complex
Corner of Amalinda and Scholl Road
Cambridge, East London 5206"

For Northern Cape please contact:

Ratha Timothy
0538312537
ratha.timothy@gmail.com

Kind Regards,

From: Stephan Jacobs <StephanJ@sivest.co.za>

Sent: 06 June 2019 02:09 PM

To: Phillip Hine <phine@sahra.org.za>

Cc: Andrea Gibb <AndreaG@sivest.co.za>; Hlengiwe Ntuli <HlengiweN@sivest.co.za>

Subject: FW: Request for Assistance with Notice of Intent Form Template and Provincial Authority Contacts

Importance: High

Good Afternoon Mr Hine,

The email below refers.

I sent this email to Natasha Higgitt but received an out of office message stating that we should contact you for any urgent matters.

Could you perhaps assist with this?

Please do not hesitate to contact me should you have any queries or should you wish to discuss this.

Kind Regards,

Stephan Jacobs (B.Sc. (Hons) Environmental Management and Analysis)

Environmental Consultant / Visual Specialist

SiVEST Environmental Division



SiVEST is a Level 3 BBBEE Contributor

D +27 11 798 0677 | **T** +27 011 798 0600 | **M** +27 72 737 2114 **E** stephanj@sivest.co.za | **W** www.sivest.co.za

Engineering Consulting | Project Management | Environmental Consulting | Town & Regional Planning | Management Systems Consulting

Durban | Johannesburg | Pretoria | Pietermaritzburg | Richards Bay | Port Louis (Mauritius)

From: Stephan Jacobs
Sent: Thursday, 06 June 2019 2:05 PM
To: 'Natasha Higgitt' <nhiggitt@sahra.org.za>
Cc: Andrea Gibb <AndreaG@sivest.co.za>; Hlengiwe Ntuli <HlengiweN@sivest.co.za>
Subject: Request for Assistance with Notice of Intent Form Template and Provincial Authority Contacts
Importance: High

Good Afternoon Ms/Mrs Higgitt,

I trust you are well.

SIVEST are in the process of compiling DEA application forms for EIA processes which we are planning on undertaking for Renewable Energy (RE) projects in the Northern and Eastern Cape provinces and came across the following statement:

"If Section 38 of the National Heritage Resources Act (Act No. 25 of 1999) is applicable to your proposed development, you are requested to submit the Notice of Intent form to the relevant SAHRA or a Provincial Heritage Resources Authority and attach a copy to this form."

In light of this, does SAHRA perhaps have a Notice of Intent Form Template which we could make use of, or know where we can find one? We have only ever encountered this for Heritage Western Cape (HWC) and thus are not certain where to find a template of this.

Also, can you please confirm who the Northern Cape and Eastern Cape Provincial Heritage Resources Authorities would be?

I did some research and found that the provincial authority for the EC is the Eastern Cape Provincial Heritage Resources Agency (ECPHRA). Is this correct? For the Northern Cape Province, Ngwao Boswa Kapa Bokone (commonly known as 'Boswa') seems to be the provincial heritage authority. Could you kindly please confirm whether this is correct or if all heritage related matters in the Northern Cape should go straight to SAHRA?

Your assistance will be greatly appreciated.

Do not hesitate to contact me should you have any queries or should you wish to discuss this.

Kind Regards,

Stephan Jacobs (*B.Sc. (Hons) Environmental Management and Analysis*)
Environmental Consultant / Visual Specialist
SiVEST Environmental Division



SiVEST is a Level 3 BBBEE Contributor

D +27 11 798 0677 | **T** +27 011 798 0600 | **M** +27 72 737 2114 **E** stephanj@sivest.co.za | **W** www.sivest.co.za

Engineering Consulting | Project Management | Environmental Consulting | Town & Regional Planning | Management Systems Consulting

Durban | Johannesburg | Pretoria | Pietermaritzburg | Richards Bay | Port Louis (Mauritius)

Disclaimer

The information contained in this communication from the sender is confidential. It is intended solely for use by the recipient and others authorized to receive it. If you are not the recipient, you are hereby notified that any disclosure, copying, distribution or taking action in relation of the contents of this information is strictly prohibited and may be unlawful.

This email has been scanned for viruses and malware, and automatically archived by **Mimecast SA (Pty) Ltd**, an innovator in Software as a Service (SaaS) for business. **Mimecast Unified Email Management ??? (UEM)** offers email continuity, security, archiving and compliance with all current legislation. To find out more, [contact Mimecast](#).

Phillip Hine

Acting Manager: APM

South African Heritage Resources Agency
- A nation united through heritage -

T: +27 21 4624502 /8652 or +27 21 202 8652| C:+27 83 793 3852| F:+27 21 462 4509
E: PHine@sahra.org.za | 111 Harrington Street | Cape Town |

www.sahra.org.za



an agency of the
Department of Arts and Culture

OUR VALUES: Accountability, Teamwork & co-operation, Respect, Transparency, Service Excellency, Integrity & Ethics, Professionalism, Accessibility, Communication & Trust.

BREAK THE CORRUPTION CHAIN
REPORT FRAUD & CORRUPTION: 0800 701 701



an agency of the
Department of Arts and Culture



Stephan Jacobs

From: Stephan Jacobs
Sent: Thursday, 06 June 2019 2:09 PM
To: Phillip Hine
Cc: Andrea Gibb; Hlengiwe Ntuli
Subject: FW: Request for Assistance with Notice of Intent Form Template and Provincial Authority Contacts

Importance: High

Follow Up Flag: Follow up
Flag Status: Flagged

Tracking:	Recipient	Delivery
	Phillip Hine	
	Andrea Gibb	Delivered: 2019/06/06 2:09 PM
	Hlengiwe Ntuli	Delivered: 2019/06/06 2:09 PM

Good Afternoon Mr Hine,

The email below refers.

I sent this email to Natasha Higgitt but received an out of office message stating that we should contact you for any urgent matters.

Could you perhaps assist with this?

Please do not hesitate to contact me should you have any queries or should you wish to discuss this.

Kind Regards,

Stephan Jacobs (*B.Sc. (Hons) Environmental Management and Analysis*)
Environmental Consultant / Visual Specialist
SiVEST Environmental Division



SiVEST is a Level 3 BBBEE Contributor

D +27 11 798 0677 | **T** +27 011 798 0600 | **M** +27 72 737 2114 **E** stephanj@sivest.co.za | **W** www.sivest.co.za

Engineering Consulting | Project Management | Environmental Consulting | Town & Regional Planning | Management Systems Consulting
Durban | Johannesburg | Pretoria | Pietermaritzburg | Richards Bay | Port Louis (Mauritius)

From: Stephan Jacobs
Sent: Thursday, 06 June 2019 2:05 PM
To: 'Natasha Higgitt' <nhiggitt@sahra.org.za>
Cc: Andrea Gibb <AndreaG@sivest.co.za>; Hlengiwe Ntuli <HlengiweN@sivest.co.za>

Subject: Request for Assistance with Notice of Intent Form Template and Provincial Authority Contacts
Importance: High

Good Afternoon Ms/Mrs Higgitt,

I trust you are well.

SiVEST are in the process of compiling DEA application forms for EIA processes which we are planning on undertaking for Renewable Energy (RE) projects in the Northern and Eastern Cape provinces and came across the following statement:

“If Section 38 of the National Heritage Resources Act (Act No. 25 of 1999) is applicable to your proposed development, you are requested to submit the Notice of Intent form to the relevant SAHRA or a Provincial Heritage Resources Authority and attach a copy to this form.”

In light of this, does SAHRA perhaps have a Notice of Intent Form Template which we could make use of, or know where we can find one? We have only ever encountered this for Heritage Western Cape (HWC) and thus are not certain where to find a template of this.

Also, can you please confirm who the Northern Cape and Eastern Cape Provincial Heritage Resources Authorities would be?

I did some research and found that the provincial authority for the EC is the Eastern Cape Provincial Heritage Resources Agency (ECPHRA). Is this correct? For the Northern Cape Province, Ngwao Boswa Kapa Bokone (commonly known as 'Boswa') seems to be the provincial heritage authority. Could you kindly please confirm whether this is correct or if all heritage related matters in the Northern Cape should go straight to SAHRA?

Your assistance will be greatly appreciated.

Do not hesitate to contact me should you have any queries or should you wish to discuss this.

Kind Regards,

Stephan Jacobs *(B.Sc. (Hons) Environmental Management and Analysis)*
Environmental Consultant / Visual Specialist
SiVEST Environmental Division



SiVEST is a Level 3 BBBEE Contributor

D +27 11 798 0677 | **T** +27 011 798 0600 | **M** +27 72 737 2114 **E** stephanj@sivest.co.za | **W** www.sivest.co.za

Engineering Consulting | Project Management | Environmental Consulting | Town & Regional Planning | Management Systems Consulting

Durban | Johannesburg | Pretoria | Pietermaritzburg | Richards Bay | Port Louis (Mauritius)

Stephan Jacobs

From: Stephan Jacobs
Sent: Friday, 07 June 2019 2:05 PM
To: 'Natasha Higgitt'
Cc: Andrea Gibb; Hlengiwe Ntuli
Subject: RE: Request for Assistance with Notice of Intent Form Template and Provincial Authority Contacts

Follow Up Flag: Follow up
Flag Status: Flagged

Good Afternoon Ms/Mrs Higgitt,

Thank you very much for your response.

The information provided in the email below is noted and greatly appreciated. We will proceed as suggested.

Thank you very much for your assistance. This has been very helpful.

Kind Regards,

Stephan Jacobs (B.Sc. (Hons) Environmental Management and Analysis)
Environmental Consultant / Visual Specialist
SiVEST Environmental Division



SiVEST is a Level 3 BBBEE Contributor

D +27 11 798 0677 | **T** +27 011 798 0600 | **M** +27 72 737 2114 **E** stephanj@sivest.co.za | **W** www.sivest.co.za

Engineering Consulting | Project Management | Environmental Consulting | Town & Regional Planning | Management Systems Consulting
Durban | Johannesburg | Pretoria | Pietermaritzburg | Richards Bay | Port Louis (Mauritius)

From: Natasha Higgitt [mailto:nhiggitt@sahra.org.za]
Sent: Friday, 07 June 2019 11:38 AM
To: Stephan Jacobs <StephanJ@sivest.co.za>
Cc: Andrea Gibb <AndreaG@sivest.co.za>; Hlengiwe Ntuli <HlengiweN@sivest.co.za>
Subject: RE: Request for Assistance with Notice of Intent Form Template and Provincial Authority Contacts

Good morning,

With regards to the section 38 development application process, only developments that are applied for in terms of section 38(1) of the NRHA require that the relevant Heritage Resources Authority is notified at the earliest phase via a NID document. HWC has a form, however, if an application to SAHRA is submitted via SAHRIS, the SAHRIS application acts as a NID document. Other documents such as project motivation and map etc. can be uploaded as additional documents.

If the application is being conducted in terms of section 38(8) of the NHRA, then no NID is required as 38(1) does not apply when a 38(8) process is undertaken. Here we require the BID or announcement letter, the draft BAR and appendices, or the draft scoping with appendices, and draft EIA with appendices to provide comments.

With regards to the Northern Cape Provincial Heritage Resources Authority (<http://www.nbkb.org.za/>), the NCPHRA does not have the authority to provide comments on section 38 application with the exception that if a structure as defined and protected by section 34 is impacted, then the NCPHRA must be consulted for comments. All section 38(1) and 38(8) cases for the Northern Cape are processed by SAHRA via SAHRIS.

The Eastern Cape Provincial Heritage Resources Authority has been assessed to be competent to perform all function of the NHRA and therefore all section 38(1) and 38(8) application in the EC are process by the ECPHRA. They do not use SAHRIS and must be contacted directly. Please see the contact details for Sello Mokhanya (smokhanya@ecphra.org.za).

I hope this is helpful.

Kind regards,

From: Stephan Jacobs <StephanJ@sivest.co.za>
Sent: Thursday, June 06, 2019 2:05 PM
To: Natasha Higgitt <nhiggitt@sahra.org.za>
Cc: Andrea Gibb <AndreaG@sivest.co.za>; Hlengiwe Ntuli <HlengiweN@sivest.co.za>
Subject: Request for Assistance with Notice of Intent Form Template and Provincial Authority Contacts
Importance: High

Good Afternoon Ms/Mrs Higgitt,

I trust you are well.

SiVEST are in the process of compiling DEA application forms for EIA processes which we are planning on undertaking for Renewable Energy (RE) projects in the Northern and Eastern Cape provinces and came across the following statement:

"If Section 38 of the National Heritage Resources Act (Act No. 25 of 1999) is applicable to your proposed development, you are requested to submit the Notice of Intent form to the relevant SAHRA or a Provincial Heritage Resources Authority and attach a copy to this form."

In light of this, does SAHRA perhaps have a Notice of Intent Form Template which we could make use of, or know where we can find one? We have only ever encountered this for Heritage Western Cape (HWC) and thus are not certain where to find a template of this.

Also, can you please confirm who the Northern Cape and Eastern Cape Provincial Heritage Resources Authorities would be?

I did some research and found that the provincial authority for the EC is the Eastern Cape Provincial Heritage Resources Agency (ECPHRA). Is this correct? For the Northern Cape Province, Ngwao Boswa Kapa Bokone (commonly known as 'Boswa') seems to be the provincial heritage authority. Could you kindly please confirm whether this is correct or if all heritage related matters in the Northern Cape should go straight to SAHRA?

Your assistance will be greatly appreciated.

Do not hesitate to contact me should you have any queries or should you wish to discuss this.

Kind Regards,

Stephan Jacobs (B.Sc. (Hons) Environmental Management and Analysis)

Environmental Consultant / Visual Specialist
SiVEST Environmental Division



SiVEST is a Level 3 BBBEE Contributor

D +27 11 798 0677 | **T** +27 011 798 0600 | **M** +27 72 737 2114 **E** stephanj@sivest.co.za | **W** www.sivest.co.za

Engineering Consulting | Project Management | Environmental Consulting | Town & Regional Planning | Management Systems Consulting

Durban | Johannesburg | Pretoria | Pietermaritzburg | Richards Bay | Port Louis (Mauritius)

Disclaimer

The information contained in this communication from the sender is confidential. It is intended solely for use by the recipient and others authorized to receive it. If you are not the recipient, you are hereby notified that any disclosure, copying, distribution or taking action in relation of the contents of this information is strictly prohibited and may be unlawful.

This email has been scanned for viruses and malware, and automatically archived by **Mimecast SA (Pty) Ltd**, an innovator in Software as a Service (SaaS) for business. **Mimecast Unified Email Management ??? (UEM)** offers email continuity, security, archiving and compliance with all current legislation. To find out more, [contact Mimecast](#).

Natasha Higgitt

Heritage Officer: Archaeology, Palaeontology and Meteorites Unit

South African Heritage Resources Agency
- A nation united through heritage -

T: +27 21 462 4502/ 8660 | **C:**+27 82 507 0378| **F:**+27 21 462 4509
E: nhiggitt@sahra.org.za | 111 Harrington Street | Cape Town |

www.sahra.org.za



an agency of the
Department of Arts and Culture

OUR VALUES: Accountability, Teamwork & co-operation, Respect, Transparency, Service Excellency, Integrity & Ethics, Professionalism, Accessibility, Communication & Trust.

BREAK THE CORRUPTION CHAIN
REPORT FRAUD & CORRUPTION: 0800 701 701



an agency of the
Department of Arts and Culture

UNMASK THE CORRUPT





Appendix 7E
Comments and Response Report
- To be included in FSR



Appendix 7F
I&AP Database

ENVIRONMENTAL IMPACT ASSESSMENTS (EIAs) FOR THE PROPOSED DEVELOPMENT OF THREE SOLAR PHOTOVOLTAIC (PV) ENERGY FACILITIES AND ASSOCIATED INFRASTRUCTURE NEAR NOUPOORT AND MIDDELBURG IN THE NORTHERN AND EASTERN CAPE PROVINCES

Scoping Phase I&AP Database

July 2019

First Name	Last Name	Company
Nicole	Abrahams	SANRAL
Vuyeka	Banisi	Chris Hani District Municipality
Nomandla	Bloem	Department of Agriculture, Land Reform & Rural Development
Jonathan	Booth	Birdlife South Africa, Biodiversity Conservation
Thoko	Buthelezi	Dept of Agriculture, Forestry & Fisheries
Anel	Croucamp	Agri SA-Eastern Cape
Neil	Erasmus	Leeuw Hoek 61 Ptn 7
Abbott	Erasmus	Paarde Valley 62 Ptn 2
Sam	Fiff	Transnet Freight Rail (Jhb)
Brian	Fisher	Dept of Environment and Nature Conservation
John	Geeringh	Eskom: Transmission
Faunty	Gillmer	Wonder Heuvel 140 Ptn 2 & 4
Morgan	Griffiths	WESSA: National
Dominic	Henry	Endangered Wildlife Trust
Natasha	Higgitt	South African Heritage Resources Agency
Bolekwa	Kama	Department of Water and Sanitation
Andries	Keun	Noupoort Boerevereniging
Colin Douglas	Kingwill	September Kraal 63
Johan	Koegelenberg	SENTECH
Lourens	Leeuwner	EWT
Seoka	Lekota	Department of Environmental Affairs
Patrick	Lenyibi	Department of Sport, Arts & Culture
Themba	Mahenye	Transnet Freight Rail
Mxolisi	Malgas	Department of Agriculture, Forestry and Fisheries (DAFF)
Jacoline	Mans	Department of Agriculture, Forestry & Fisheries
Mashudu	Marubini	DAFF Provincial Department
Charlotte	Mashiloane	Umsobomvu Youth Fund
Simphiwe	Masilela	Air Traffic Navigation Services
Mzolisi	Matutu	Department of Sport, Recreation, Arts and Culture
Ayabonga	Mavisiwe	Inxuba Yethemba Municipality
Africa	Maxongo	ECPHRA
Sibonelo	Mbanjwa	Dept of Agriculture, Land Reform, Conservation and Environment
Vuyokazi	Mbanjwa	EC Department of Roads & Public Works
Nondwe	Mdekazi	Dept of Economic Development, Env Affairs & Tourism
Sello	Mokhanya	Eastern Cape Provincial Heritage Resource Authority
Lerato	Mokhoantle	Department of Water & Sanitation
Lungi	Mondela	Department of Mineral Resources (DMR) - NC
Ezekiel	Monyamane	Transnet Freight Rail
Johanna	Morobane	Air Traffic Navigation Services
Serame	Motlhake	SENTECH
Amos	Mpela	Umsobomvu Local Municipality
Q	Mpotulo	Chris Hani District Municipality
Thulani	Mthombeni	NC Dept of Environment and Nature Conservation
Henning	Myburg	Agri SA: Northern Cape
Eric	Naude	Leuwe Kop 120 Ptn 2 & 3
Andre	Neser	Klip Krands 60 Ptn 1
Cira	Ngetu	EC Department of Economic Developmet Environmen Affairs & Tourism
Sonwabile	Nkondeshe	Pixley Ka Seme District Municipality
Noluvuyo	Nqeno	Department of Agriculture, Land Reform & Rural Development
Ihlaam	Peters	Telkom SA (Ltd)
R.E.	Pieterse	Pixley Ka Seme District Municipality
Fundiswa	Qumba	Umsobomvu Local Municipality
Mmatlala	Rabothata	Department of Environmental Affairs
Samantha	Ralston-Paton	BirdLife South Africa
Jaco	Roelofse	NC Department of Roads & Public Works
Nenekazi	Songxaba	SANRAL - Southern Region
PG	Steyn	Klip Krands 60 Ptn 3 & 4
Lizell	Stroh	SA Civil Aviation Authority
Pieter	Swart	Department of Mineral Resources
Sarel David	Theron	Zaay Fontein 65 REM
Adriaan	Tiplady	Square Kilometre Array
Marais	Trust	Zaay Fontein 65 Ptn 2
Stanley	Tshitwamolomoni	Department of Environmental Affairs
N	Twalo	Inxuba Yethemba Municipality
Zimkita	Tyala	Department of Mineral Resources (DMR) - EC
Heleen	van den Heever	Telkom (SA) Ltd
Jacobus Andries	van der Merwe	Elands Heuvel 113 Ptn 1
Vivian	van der Merwe	Elands Kloof 135 REM & Leuwe Kop 120 REM
Lindo	Van der Merwe	Noupoort Boerevereniging
Denver	Van Heeden	Dept of Environment and Nature Conservation
Philip	van Ligen	Wonder Heuvel 140 Ptn 1 & Mooi Plaats 122 REM



Appendix 7G

Minutes of Meetings

- To be included in DEIAr



Appendix 7H

Landowner Notifications

Stephan Jacobs

From: sivist_PPP
Sent: Friday, 19 July 2019 4:16 PM
Cc: Stephan Jacobs; Andrea Gibb
Subject: 15324 Three (3) Solar PV Energy Facilities near Noupoort and Middelburg – Landowner Notification

Follow Up Flag: Follow up
Flag Status: Flagged

Dear Landowner,

Please find attached a letter for your attention.



5354_Umsobomvi
PV LO Letter_R...

Please do not hesitate to contact us should you have any queries in this regard.

Geagte Grondeienaar,

Vind asseblief aangeheg n brief vir u aandag.



5354_Umsobomvi
PV LO Letter_R...

Moet asseblief nie huiwer om ons te kontak indien u enige navrae in hierdie verband het nie.

Kind Regards,

Stephan Jacobs *(B.Sc. (Hons) Environmental Management and Analysis)*
Environmental Consultant
SiVEST Environmental Division



SiVEST is a Level 3 BBBEE Contributor

D +27 11 798 0677 | **T** +27 11 798 0600 | **E** stephanj@sivest.co.za | **W** www.sivest.co.za

Engineering Consulting | Project Management | Environmental Consulting | Town & Regional Planning | Management Systems Consulting

Durban | Johannesburg | Pretoria | Pietermaritzburg | Richards Bay | Port Louis (Mauritius)

sivest_PPP

From: sivest_PPP
Sent: 19 July 2019 04:16 PM
Cc: Stephan Jacobs; Andrea Gibb
Subject: 15324 Three (3) Solar PV Energy Facilities near Noupoort and Middelburg – Landowner Notification

Tracking:	Recipient	Delivery	Read
	Stephan Jacobs	Delivered: 2019/07/19 04:16 PM	Read: 2019/07/19 04:20 PM
	Andrea Gibb	Delivered: 2019/07/19 04:16 PM	Read: 2019/07/19 04:42 PM
	'Andries Keun'		
	'Colin Douglas Kingwill'		
	'Faunty Gillmer'		
	'Abbott Erasmus'		
	'Lindo Van der Merwe'		
	'Vivian van der Merwe'		

Dear Landowner,

Please find attached a letter for your attention.



Please do not hesitate to contact us should you have any queries in this regard.

Geagte Grondeienaar,

Vind asseblief aangeheg n brief vir u aandag.



Moet asseblief nie huiwer om ons te kontak indien u enige navrae in hierdie verband het nie.

Kind Regards,

Stephan Jacobs *(B.Sc. (Hons) Environmental Management and Analysis)*
Environmental Consultant
SiVEST Environmental Division



SiVEST is a Level 3 BBBEE Contributor

D +27 11 798 0677 | **T** +27 11 798 0600 | **E** stephanj@sivest.co.za | **W** www.sivest.co.za

Engineering Consulting | Project Management | Environmental Consulting | Town & Regional Planning | Management Systems Consulting
Durban | Johannesburg | Pretoria | Pietermaritzburg | Richards Bay | Port Louis (Mauritius)

Number	Message	Group	DateTime	Customer ID	Status
27721927713	SIVEST is aangestel om die Omgewingsimpakevalueringsprosesse (OIE-prosesse) te onderneem vir die beoogde ontwikkeling van die Umsobomvu Fotovoltaese (FV) Sonkragaanlegte naby Noupoot en Middelburg, Noord- en Oos-Kaapprovinsie.	Umsobomvu LO	19 Jul 2019 12:59		EXPIRED
27790151010	SIVEST is aangestel om die Omgewingsimpakevalueringsprosesse (OIE-prosesse) te onderneem vir die beoogde ontwikkeling van die Umsobomvu Fotovoltaese (FV) Sonkragaanlegte naby Noupoot en Middelburg, Noord- en Oos-Kaapprovinsie.	Umsobomvu LO	19 Jul 2019 12:59		DELIVRD
27793938920	SIVEST is aangestel om die Omgewingsimpakevalueringsprosesse (OIE-prosesse) te onderneem vir die beoogde ontwikkeling van die Umsobomvu Fotovoltaese (FV) Sonkragaanlegte naby Noupoot en Middelburg, Noord- en Oos-Kaapprovinsie.	Umsobomvu LO	19 Jul 2019 12:59		DELIVRD
27798817800	SIVEST is aangestel om die Omgewingsimpakevalueringsprosesse (OIE-prosesse) te onderneem vir die beoogde ontwikkeling van die Umsobomvu Fotovoltaese (FV) Sonkragaanlegte naby Noupoot en Middelburg, Noord- en Oos-Kaapprovinsie.	Umsobomvu LO	19 Jul 2019 12:59		DELIVRD
27815072541	SIVEST is aangestel om die Omgewingsimpakevalueringsprosesse (OIE-prosesse) te onderneem vir die beoogde ontwikkeling van die Umsobomvu Fotovoltaese (FV) Sonkragaanlegte naby Noupoot en Middelburg, Noord- en Oos-Kaapprovinsie.	Umsobomvu LO	19 Jul 2019 12:59		DELIVRD
27827720410	SIVEST is aangestel om die Omgewingsimpakevalueringsprosesse (OIE-prosesse) te onderneem vir die beoogde ontwikkeling van die Umsobomvu Fotovoltaese (FV) Sonkragaanlegte naby Noupoot en Middelburg, Noord- en Oos-Kaapprovinsie.	Umsobomvu LO	19 Jul 2019 12:59		DELIVRD
27828202136	SIVEST is aangestel om die Omgewingsimpakevalueringsprosesse (OIE-prosesse) te onderneem vir die beoogde ontwikkeling van die Umsobomvu Fotovoltaese (FV) Sonkragaanlegte naby Noupoot en Middelburg, Noord- en Oos-Kaapprovinsie.	Umsobomvu LO	19 Jul 2019 12:59		DELIVRD
27833087702	SIVEST is aangestel om die Omgewingsimpakevalueringsprosesse (OIE-prosesse) te onderneem vir die beoogde ontwikkeling van die Umsobomvu Fotovoltaese (FV) Sonkragaanlegte naby Noupoot en Middelburg, Noord- en Oos-Kaapprovinsie.	Umsobomvu LO	19 Jul 2019 12:59		DELIVRD

Number	Message	Group	DateTime	Customer ID	Status
27721927713	U is gedentifiseer as n aangrensende / omliggende grondeienaar vir die beoogde projekte. SiVEST versoek dus asseblief u e-posadres en/of pos-/woonadres (sou u nie n e-posadres h nie) en dié van enige okkuperders wat op u grond woon, sodat ons inligting oor die projekte kan stuur en u by die OIE-prosesse kan betrek.	Umsobomvu LO	19 Jul 2019 12:59		EXPIRED
27790151010	U is gedentifiseer as n aangrensende / omliggende grondeienaar vir die beoogde projekte. SiVEST versoek dus asseblief u e-posadres en/of pos-/woonadres (sou u nie n e-posadres h nie) en dié van enige okkuperders wat op u grond woon, sodat ons inligting oor die projekte kan stuur en u by die OIE-prosesse kan betrek.	Umsobomvu LO	19 Jul 2019 12:59		DELIVRD
27793938920	U is gedentifiseer as n aangrensende / omliggende grondeienaar vir die beoogde projekte. SiVEST versoek dus asseblief u e-posadres en/of pos-/woonadres (sou u nie n e-posadres h nie) en dié van enige okkuperders wat op u grond woon, sodat ons inligting oor die projekte kan stuur en u by die OIE-prosesse kan betrek.	Umsobomvu LO	19 Jul 2019 12:59		DELIVRD
27798817800	U is gedentifiseer as n aangrensende / omliggende grondeienaar vir die beoogde projekte. SiVEST versoek dus asseblief u e-posadres en/of pos-/woonadres (sou u nie n e-posadres h nie) en dié van enige okkuperders wat op u grond woon, sodat ons inligting oor die projekte kan stuur en u by die OIE-prosesse kan betrek.	Umsobomvu LO	19 Jul 2019 12:59		DELIVRD
27815072541	U is gedentifiseer as n aangrensende / omliggende grondeienaar vir die beoogde projekte. SiVEST versoek dus asseblief u e-posadres en/of pos-/woonadres (sou u nie n e-posadres h nie) en dié van enige okkuperders wat op u grond woon, sodat ons inligting oor die projekte kan stuur en u by die OIE-prosesse kan betrek.	Umsobomvu LO	19 Jul 2019 12:59		DELIVRD
27827720410	U is gedentifiseer as n aangrensende / omliggende grondeienaar vir die beoogde projekte. SiVEST versoek dus asseblief u e-posadres en/of pos-/woonadres (sou u nie n e-posadres h nie) en dié van enige okkuperders wat op u grond woon, sodat ons inligting oor die projekte kan stuur en u by die OIE-prosesse kan betrek.	Umsobomvu LO	19 Jul 2019 12:59		DELIVRD
27828202136	U is gedentifiseer as n aangrensende / omliggende grondeienaar vir die beoogde projekte. SiVEST versoek dus asseblief u e-posadres en/of pos-/woonadres (sou u nie n e-posadres h nie) en dié van enige okkuperders wat op u grond woon, sodat ons inligting oor die projekte kan stuur en u by die OIE-prosesse kan betrek.	Umsobomvu LO	19 Jul 2019 12:59		DELIVRD
27833087702	U is gedentifiseer as n aangrensende / omliggende grondeienaar vir die beoogde projekte. SiVEST versoek dus asseblief u e-posadres en/of pos-/woonadres (sou u nie n e-posadres h nie) en dié van enige okkuperders wat op u grond woon, sodat ons inligting oor die projekte kan stuur en u by die OIE-prosesse kan betrek.	Umsobomvu LO	19 Jul 2019 12:59		DELIVRD

Number	Message	Group	DateTime	Customer ID	Status
27721927713	Stuur asseblief u e-posadres en/of pos-/woonadres aan Hlengiwe Ntuli by: 060 613 3391.	Umsobomvu LO	19 Jul 2019 13:00		EXPIRED
27790151010	Stuur asseblief u e-posadres en/of pos-/woonadres aan Hlengiwe Ntuli by: 060 613 3391.	Umsobomvu LO	19 Jul 2019 13:00		DELIVRD
27793938920	Stuur asseblief u e-posadres en/of pos-/woonadres aan Hlengiwe Ntuli by: 060 613 3391.	Umsobomvu LO	19 Jul 2019 13:00		DELIVRD
27798817800	Stuur asseblief u e-posadres en/of pos-/woonadres aan Hlengiwe Ntuli by: 060 613 3391.	Umsobomvu LO	19 Jul 2019 13:00		DELIVRD
27815072541	Stuur asseblief u e-posadres en/of pos-/woonadres aan Hlengiwe Ntuli by: 060 613 3391.	Umsobomvu LO	19 Jul 2019 13:00		DELIVRD
27827720410	Stuur asseblief u e-posadres en/of pos-/woonadres aan Hlengiwe Ntuli by: 060 613 3391.	Umsobomvu LO	19 Jul 2019 13:00		DELIVRD
27828202136	Stuur asseblief u e-posadres en/of pos-/woonadres aan Hlengiwe Ntuli by: 060 613 3391.	Umsobomvu LO	19 Jul 2019 13:00		DELIVRD
27833087702	Stuur asseblief u e-posadres en/of pos-/woonadres aan Hlengiwe Ntuli by: 060 613 3391.	Umsobomvu LO	19 Jul 2019 13:00		DELIVRD

Number	Message	Group	DateTime	Customer ID	Status
27721927713	SIVEST has been appointed to conduct the Environmental Impact Assessment (EIA) Processes for the proposed development of the Umsobomvu Solar Photovoltaic (PV) Energy Facilities near Noupoort and Middelburg, Northern and Eastern Cape Provinces.	Umsobomvu LO	19 Jul 2019 12:58		EXPIRED
27790151010	SIVEST has been appointed to conduct the Environmental Impact Assessment (EIA) Processes for the proposed development of the Umsobomvu Solar Photovoltaic (PV) Energy Facilities near Noupoort and Middelburg, Northern and Eastern Cape Provinces.	Umsobomvu LO	19 Jul 2019 12:58		DELIVRD
27793938920	SIVEST has been appointed to conduct the Environmental Impact Assessment (EIA) Processes for the proposed development of the Umsobomvu Solar Photovoltaic (PV) Energy Facilities near Noupoort and Middelburg, Northern and Eastern Cape Provinces.	Umsobomvu LO	19 Jul 2019 12:58		DELIVRD
27798817800	SIVEST has been appointed to conduct the Environmental Impact Assessment (EIA) Processes for the proposed development of the Umsobomvu Solar Photovoltaic (PV) Energy Facilities near Noupoort and Middelburg, Northern and Eastern Cape Provinces.	Umsobomvu LO	19 Jul 2019 12:58		DELIVRD
27815072541	SIVEST has been appointed to conduct the Environmental Impact Assessment (EIA) Processes for the proposed development of the Umsobomvu Solar Photovoltaic (PV) Energy Facilities near Noupoort and Middelburg, Northern and Eastern Cape Provinces.	Umsobomvu LO	19 Jul 2019 12:58		DELIVRD
27827720410	SIVEST has been appointed to conduct the Environmental Impact Assessment (EIA) Processes for the proposed development of the Umsobomvu Solar Photovoltaic (PV) Energy Facilities near Noupoort and Middelburg, Northern and Eastern Cape Provinces.	Umsobomvu LO	19 Jul 2019 12:58		DELIVRD
27828202136	SIVEST has been appointed to conduct the Environmental Impact Assessment (EIA) Processes for the proposed development of the Umsobomvu Solar Photovoltaic (PV) Energy Facilities near Noupoort and Middelburg, Northern and Eastern Cape Provinces.	Umsobomvu LO	19 Jul 2019 12:58		DELIVRD
27833087702	SIVEST has been appointed to conduct the Environmental Impact Assessment (EIA) Processes for the proposed development of the Umsobomvu Solar Photovoltaic (PV) Energy Facilities near Noupoort and Middelburg, Northern and Eastern Cape Provinces.	Umsobomvu LO	19 Jul 2019 12:58		DELIVRD

Number	Message	Group	DateTime	Customer ID	Status
27721927713	You have been identified as an adjacent / surrounding landowner for the proposed projects. SiVEST would thus like to please request the email address and/or postal/residential address (should you not have an email address) of you and any occupants residing on your land, so that we can send information regarding the projects and involve you in the EIA processes.	Umsobomvu LO	19 Jul 2019 12:58		EXPIRED
27790151010	You have been identified as an adjacent / surrounding landowner for the proposed projects. SiVEST would thus like to please request the email address and/or postal/residential address (should you not have an email address) of you and any occupants residing on your land, so that we can send information regarding the projects and involve you in the EIA processes.	Umsobomvu LO	19 Jul 2019 12:58		DELIVRD
27793938920	You have been identified as an adjacent / surrounding landowner for the proposed projects. SiVEST would thus like to please request the email address and/or postal/residential address (should you not have an email address) of you and any occupants residing on your land, so that we can send information regarding the projects and involve you in the EIA processes.	Umsobomvu LO	19 Jul 2019 12:58		DELIVRD
27798817800	You have been identified as an adjacent / surrounding landowner for the proposed projects. SiVEST would thus like to please request the email address and/or postal/residential address (should you not have an email address) of you and any occupants residing on your land, so that we can send information regarding the projects and involve you in the EIA processes.	Umsobomvu LO	19 Jul 2019 12:58		DELIVRD
27815072541	You have been identified as an adjacent / surrounding landowner for the proposed projects. SiVEST would thus like to please request the email address and/or postal/residential address (should you not have an email address) of you and any occupants residing on your land, so that we can send information regarding the projects and involve you in the EIA processes.	Umsobomvu LO	19 Jul 2019 12:58		DELIVRD
27827720410	You have been identified as an adjacent / surrounding landowner for the proposed projects. SiVEST would thus like to please request the email address and/or postal/residential address (should you not have an email address) of you and any occupants residing on your land, so that we can send information regarding the projects and involve you in the EIA processes.	Umsobomvu LO	19 Jul 2019 12:58		DELIVRD
27828202136	You have been identified as an adjacent / surrounding landowner for the proposed projects. SiVEST would thus like to please request the email address and/or postal/residential address (should you not have an email address) of you and any occupants residing on your land, so that we can send information regarding the projects and involve you in the EIA processes.	Umsobomvu LO	19 Jul 2019 12:58		DELIVRD
27833087702	You have been identified as an adjacent / surrounding landowner for the proposed projects. SiVEST would thus like to please request the email address and/or postal/residential address (should you not have an email address) of you and any occupants residing on your land, so that we can send information regarding the projects and involve you in the EIA processes.	Umsobomvu LO	19 Jul 2019 12:58		DELIVRD

Number	Message	Group	DateTime	Customer ID	Status
27721927713	Please forward your email address and/or postal/residential address to Hlengiwe Ntuli at: 060 613 3391.	Umsobomvu LO	19 Jul 2019 12:59		EXPIRED
27790151010	Please forward your email address and/or postal/residential address to Hlengiwe Ntuli at: 060 613 3391.	Umsobomvu LO	19 Jul 2019 12:59		DELIVRD
27793938920	Please forward your email address and/or postal/residential address to Hlengiwe Ntuli at: 060 613 3391.	Umsobomvu LO	19 Jul 2019 12:59		DELIVRD
27798817800	Please forward your email address and/or postal/residential address to Hlengiwe Ntuli at: 060 613 3391.	Umsobomvu LO	19 Jul 2019 12:59		DELIVRD
27815072541	Please forward your email address and/or postal/residential address to Hlengiwe Ntuli at: 060 613 3391.	Umsobomvu LO	19 Jul 2019 12:59		DELIVRD
27827720410	Please forward your email address and/or postal/residential address to Hlengiwe Ntuli at: 060 613 3391.	Umsobomvu LO	19 Jul 2019 12:59		DELIVRD
27828202136	Please forward your email address and/or postal/residential address to Hlengiwe Ntuli at: 060 613 3391.	Umsobomvu LO	19 Jul 2019 12:59		DELIVRD
27833087702	Please forward your email address and/or postal/residential address to Hlengiwe Ntuli at: 060 613 3391.	Umsobomvu LO	19 Jul 2019 12:59		DELIVRD

U verwysing:

Ons verwysing: 15324 Umsobomvu PV

Datum: 19 ulie 2019

Geagte Grondeienaar

KENNISGEWING VAN OMGEWINGSIMPAKEVALUERINGSPROSESSE (OIE-PROSESSE) VIR DIE BEOOGDE ONTWIKKELING VAN DIE DRIE (3) FOTOVOLTAÏESE (FV) SONKRAGAAANLEGTE EN VERWANTE INFRASTRUKTUUR NABY NOUPOORT EN MIDDELBURG IN DIE NOORD- EN OOS-KAAPPROVINSIE

- **MOOI PLAATS FV-SONKRAGAAANLEG – (DO-verw. No.: Moet nog aangekondig word)**
- **WONDERHEUVEL FV SONKRAGAAANLEG – (DO-verw. No.: Moet nog aangekondig word)**
- **PAARDE VALLEY FV SONKRAGAAANLEG – (DO-verw. No.: Moet nog aangekondig word)**

As 'n geïdentifiseerde belanghebbende, stel ons u graag in kennis van die Omgewingsimpakevaluering (OIE's) wat tans aan die gang is vir die beoogde ontwikkeling van drie (3) aangrensende fotovoltaïese (FV) sonkragaanlegte en verwante infrastruktuur as deel van die groter Umsobomvu FV-projek naby Noupoot en Middelburg in Suid-Afrika se Noord- en Oos- aaprovinsie. Die drie (3) aangrensende FV-sonkragaanlegte sal die Mooi Plaats FV-, Wonderheuvel FV- en Paarde Valley FV-sonkragaanleg heet. Hierdie skrywe is om alle grondeienaars en/of okkuperders van die grond waarop die ontwikkelings beoog word, te verwittig en in kennis te stel van die OIE-prosesse.

Ingevolge die Nasionale Wet op Omgewingsbestuur, 1998 (Wet 107 van 1998) (NEMA), soos gewysig, en die Regulasies op Omgewingsimpakevaluering (OIE-regulasies), kragtens Staatskennisgewing R982, R983, R984 en R985 (soos gewysig), geskied kennis hiermee dat SiVEST SA (Edms.) Bpk. aangestel is as die onafhanklike Omgewingsevalueringpraktisyn (OEP) om die nodige OIE- en Openbare Deelnameprosesse (PPP) vir die onderstaande ontwikkelings te onderneem wat by die Nasionale Departement van Omgewingsake (DO) ingedien moet word vir besluitneming.

AGTERGROND & BESKRYWING VAN PROJEK

Ter ondersteuning van die behoefte om oplossings vir die huidige elektrisiteitstekorte en die groeiende vraag na energie te kry, asook die behoefte om meer volhoubare en omgewingsvriendelike kragbronne te kry, het Suid-Afrika 'n infrastruktuurprogram van stapel gestuur wat deur verskeie regeringsinisiatiewe gesteun word. In antwoord op hierdie doelwit, word drie (3) aangrensende FV-sonkragaanlegte en verwante infrastruktuur naby Noupoot en Middelburg in die Noord- en Oos- aaprovinsie beoog. Die uiteindelige doelwit van die beoogde projekte is om elektrisiteit aan die hand van hernubare kragtegnologie op te wek deur sonkrag in te span en dit by die nasionale kragnet in te voer.

PROJEKLIIGINGS

Die drie (3) FV-sonkragaanlegte en verwante infrastruktuur is sowat 18 km suidwes van Noupoot in die Noord- aap, en sowat 21 km noordwes van Middelburg in die Oos- aaprovinsie gele . Beide die Mooi

Plaats en Wonderheuvel FV-sonkragaanlegte is in die Umsobomvu Plaaslike Munisipaliteit in die Pixley ka Seme Distriksmunisipaliteit van die Noord- aapprovinsie gele , en die Paarde Valley FV-sonkragaanleg is in die Inxuba Yethemba Plaaslike Munisipaliteit in die Chris Hani Distriksmunisipaliteit van die Oos- aapprovinsie gele . Die beoogde projekte sluit die volgende plase in:

Mooi Plaats FV-sonkragaanleg	
Gedeelte 1 van die plaas Leuwe op No. 120	Restant van die plaas Mooi Plaats No. 121

Wonderheuvel FV-sonkragaanleg		
Restant van die plaas Mooi Plaats No. 121	Gedeelte 3 van die plaas Wonder Heuvel No. 140	Gedeelte 5 van die plaas Holle Fountain No. 133

Paarde Valley FV-sonkragaanleg	
Gedeelte 2 van die plaas Paarde Valley No. 2	Gedeelte 7 van die plaas Leeuw Hoek No. 1

As 'n direk **Geaffekteerde of Naburige Grondeienaar**, versoek ons hiermee dat u ons voorsien van die besonderhede van alle mense wat op u grond woon, dit huur of bestuur (naam, selfoonnommer, posen/of e-posadres), sodat ons kan verseker dat alle potensi le Belangstellende en/of Geaffekteerde Partye (B&GP's) op ons onderskeie projekdatabasisse ingesluit is. Ons versoek vriendelik dat u die verlangde besonderhede teen sluitingstyd op **Woensdag, 31 Julie 2019**, aan SiVEST stuur volgens die besonderhede hieronder.

Hlengiwe Ntuli of Stephan Jacobs

SiVEST Environmental
 Posbus 2921
 RIVONIA
 2128

Tel: 011 798 0 00

Faks: 011 803 7272

Webwerf: www.sivest.co.za

E-pos: hlengiwen@sivest.co.za / stephanj@sivest.co.za / sivest_ppp@sivest.co.za

Die uwe



Stephan Jacobs
 Omgewingskonsultant
SiVEST Environmental

Your reference:

Our reference: 15324 Umsobomvu PV

Date: 19 July 2019

Dear Landowner,

NOTIFICATION OF ENVIRONMENTAL IMPACT ASSESSMENT (EIA) PROCESSES FOR THE PROPOSED DEVELOPMENT OF THE THREE (3) SOLAR PHOTOVOLTAIC (PV) ENERGY FACILITIES AND ASSOCIATED INFRASTRUCTURE NEAR NOUPOORT AND MIDDELBURG IN THE NORTHERN AND EASTERN CAPE PROVINCES

- **MOOI PLAATS SOLAR PV – (DEA Ref No.: To be Announced)**
- **WONDERHEUVEL SOLAR PV – (DEA Ref No.: To be Announced)**
- **PAARDE VALLEY SOLAR PV – (DEA Ref No.: To be Announced)**

As an identified stakeholder, we wish to notify you of the Environmental Impact Assessments (EIAs) that are currently underway for the proposed development of three (3) adjacent Solar Photovoltaic (PV) energy facilities and associated infrastructure as part of the greater Umsobomvu PV project near Noupoort and Middelburg in the Northern and Eastern Cape Provinces of South Africa. The three (3) adjacent solar PV energy facilities are referred to as Mooi Plaats Solar PV, Wonderheuvel Solar PV and Paarde Valley Solar PV. This letter serves to inform and notify all landowners and/or occupants of the land where the developments are proposed, of the EIA processes.

In terms of the National Environmental Management Act, 1998 (Act No. 107 of 1998) (NEMA) as amended and the Environmental Impact Assessment (EIA) Regulations, under Government Notices No R982, R983, R984 and R985 (as amended), notice is hereby given that SiVEST SA (Pty) Ltd has been appointed, as the independent Environmental Assessment Practitioner (EAP), to undertake the required EIA and Public Participation Processes (PPP) for the below-mentioned developments to be submitted to the National Department of Environmental Affairs (DEA) for decision-making.

PROJECT BACKGROUND & DESCRIPTION

In support of the need to find solutions for the current electricity shortages and the increasing demand for energy, as well as the need to find more sustainable and environmentally friendly energy resources, South Africa has embarked on an infrastructure growth programme supported by various government initiatives. In response to this goal, the three (3) adjacent solar PV energy facilities and associated infrastructure near Noupoort and Middelburg in the Northern and Eastern Cape Provinces are being proposed. The overall objective of the proposed projects is to generate electricity by means of renewable energy technologies capturing solar energy and to feed into the national grid.

PROJECT LOCATIONS

The three (3) solar PV energy facilities and associated infrastructure are located approximately 18km south-west of Noupoort in the Northern Cape Province, and approximately 21km north-west of Middelburg

in the Eastern Cape Province. While both the Mooi Plaats and Wonderheuveld Solar PV facilities are located in the Umsobomvu Local Municipality, in the Pixley ka Seme District Municipality of the Northern Cape Province, the Paarde Valley Solar PV facility is located in the Inxuba Yethemba Local Municipality, in the Chris Hani District Municipality of the Eastern Cape Province. The proposed projects include the following farms:

Mooi Plaats Solar PV	
Portion 1 of the Farm Leuwe op No. 120	Remainder of the Farm Mooi Plaats No. 121

Wonderheuveld Solar PV		
Remainder of the Farm Mooi Plaats No. 121	Portion 3 of the Farm Wonder Heuveld No. 140	Portion 5 of the Farm Holle Fountain No. 133

Paarde Valley Solar PV	
Portion 2 of the Farm Paarde Valley No. 2	Portion 7 of the Farm Leeuw Hoek No. 1

As a directly **Affected** or **Adjacent Landowner**, we hereby request that you provide us with the details of all persons residing on, leasing or managing your land (name, cell phone number, postal address and/or email address), so that we can ensure that all potentially Interested and/or Affected Parties (I&APs) are included on our respective project databases. We kindly request that you send the requested details to SiVEST as per the details below by close of business (COB) on **Wednesday the 31st of July 2019**.

Hlengiwe Ntuli or Stephan Jacobs

SiVEST Environmental
P.O. Box 2921
RIVONIA
2128

Tel: (011) 798 0 00

Fax: (011) 803 7272

Website: www.sivest.co.a

E-mail: hlengiwen@sivest.co.a / stephanj@sivest.co.a / sivestppp@sivest.co.a

Yours sincerely,



Stephan Jacobs
Environmental Consultant
SiVEST Environmental



Appendix 7I
Distribution to Organs of State

DISTRIBUTION OF THE DRAFT SCOPING REPORT (DSR) TO ORGANS OF STATE FOR COMMENT

TITLE	SURNAME	NAME	POSITION	POSTAL ADDRESS	EMAIL ADDRESS	RESPONSE / RECEIPT OF COMMENTS
UMSOBOMVU LOCAL MUNICIPALITY						
Ms	Qumba	Fundiswa		Church Street 21A COLESBERG 9795	gumba@umsobomvumun.co.za gumbafundiswa@gmail.com	
Mr	Mpela	Amos	Municipal Manager	Church Street 21A COLESBERG 9795	mpela@umsobomvumun.co.za	
PIXLEY KA SEME DISTRICT MUNICIPALITY						
Mr	Nkondeshe	Sonwabile		Culvert Road, Industrial Area DE AAR 7000		
AGRI SA-NORTHERN CAPE						
Mr	Myburg	Henning	General Manager	PO Box 1094 KIMBERLEY 8300	henning@agrink.co.za	
ATNS						
Ms	Morobane	Johanna	Manager: Corporate Sustainability and Environment	Private Bag X15 KEMPTON PARK 1620	JohannaM@atns.co.za	
Ms	Masilela	Simphiwe	Obstacle Evaluator	Private Bag X15 KEMPTON PARK 1620	SimphiweM@atns.co.za	
BIRDLIFE SOUTH AFRICA						
Mr	Booth	Jonathan	Policy Manager	Private Bag X16 PINEGORRE 2121	advocacy@birdlife.org.za	
Ms	Ralston	Samantha		Private Bag X16 PINEGORRE 2121	energy@birdlife.org.za	
ENDANGERED WILDLIFE TRUST						
Mr	Leeuwner	Lourens	Renewable Energy Project Manager	Private Bag X11, MODDERFONTEIN 1609	lourensl@ewt.org.za	
ESKOM						
Mr	Geeringh	John	Chief Planner	PO Box 1091 JOHANNESBURG 2000	GeerinJH@eskom.co.za	
DEPARTMENT OF ENVIRONMENTAL AFFAIRS BIODIVERSITY						
Mr	Lekota	Seoka		Private Bag X447 PRETORIA 0001	slekota@environment.gov.za	
Mr	Rabothata	Mmatlala		Private Bag X447 PRETORIA 0001	slekotamrabothata@environment.gov.za	
DEPARTMENT OF WATER AND SANITATION						
Ms	Mokhoantle	Lerato	Environmental Officer	28 Central road Beaconsfield Kimberley 8300	Mokhoantle@dws.gov.za	
DEPARTMENT OF MINERAL RESOURCES (DMR) - NORTHERN CAPE						
Mr	Swart	Pieter	Regional Manager	41 Schmidtsdrift street, Telkom Building, KIMBERLEY, 8300	pieter.swart@dmr.gov.za	
Ms	Mondela	Lungi	Secretary	41 Schmidtsdrift street, Telkom Building, KIMBERLEY, 8300	Lungi.Mondela@dmr.gov.za	
DEPARTMENT OF AGRICULTURE, FORESTRY AND FISHERIES						
National Department						
Ms	Buthlezi	Thoko	AgriLand Liaison Office	Private Bag X120 PRETORIA 0001	ThokoB@daff.gov.za	
Ms	Marubini	Mashudu	Delegate of the Minister	Delpen Building Cnr Annie Botha and Union Street Office 270 PRETORIA 0001	MashuduMa@daff.gov.za	
Provincial Department- Northern Cape						
Ms	Mans	Jacoline	Chief Forester	Koelenhof, 306 Schroder Street UPINGTON 8800	jacolinema@daff.gov.za	
NORTHERN CAPE PROVINCIAL DEPARTMENT OF AGRICULTURE, LAND REFORM & RURAL DEVELOPMENT						

DISTRIBUTION OF THE DRAFT SCOPING REPORT (DSR) TO ORGANS OF STATE FOR COMMENT

TITLE	SURNAME	NAME	POSITION	POSTAL ADDRESS	EMAIL ADDRESS	RESPONSE / RECEIPT OF COMMENTS
Ms	Bloem	Nomandla	MEC	Private Bag X5018 KIMBERLEY 8300		
NORTHERN CAPE DEPT OF ENVIRONMENT AND NATURE CONSERVATION						
Mr	Fisher	Brian	Director Environmental Impact Management	Private Bag X86102 KIMBERLEY 8300	bfisher@ncpg.gov.za	
Mr	Mthombeni	Thulani		Private Bag X86102 KIMBERLEY 8300	TMthombeni@ncpg.gov.za tmtho@webmail.co.za	
Mr	Van Heeden	Denver	HOD	Private Bag X6010 KIMBERLEY 8300	dvaheeden@ncpg.gov.za	
PROVINCIAL DEPT OF SPORT, ARTS & CULTURE: Heritage Resources Unit						
Mr	Lenyibi	Patrick	Manager: Heritage Resources	Private Bag X5004 KIMBERLEY 8300	plenyibi@ncpg.gov.za	
NORTHERN CAPE DEPARTMENT OF ROADS AND PUBLIC WORKS						
Mr	Roelofse	Jaco	Director: Planning & Design	PO Box 3132 KIMBERLEY 8300	roelofse.j@vodamail.co.za	
SANRAL - WESTERN REGION						
Ms	Abrahams	Nicole	Environmental Coordinator	Private Bag X19 BELLVILLE 7535	abrahamsn@nra.co.za	
SAHRA: HEAD OFFICE						
Ms	Higgitt	Natasha	Heritage Officer: Northern Cape	PO Box 4637 CAPE TOWN 8000	nhiggitt@sahra.org.za	
SQUARE KILOMETRE ARRAY						
Dr	Tiplady	Adriaan	Manager: Site Categorisation	PO Box 522 SAXONWOLD 2132	atiplady@ska.ac.za	
SA CIVIL AVIATION AUTHORITY (SA CAA)						
Ms	Stroh	Lizell	Obstacle Specialist	Private Bag X73 HALFWAY HOUSE 1685	stroh@caa.co.za	
SENTECH						
Mr	Koegelenberg	Johan	Broadcast Coverage Planner: RF Networks	Private Bag X06 HONEYDEW 2040	koegelenbergj@sentech.co.za	
Mr	Mothlake	Serame	Manager	Private Bag X06 HONEYDEW 2040	mothlakes@sentech.co.za	
TRANSNET FREIGHT RAIL						
Mr	Monyamane	Ezekiel	Senior Manager: Freight Rail	15 Girtan Road Inyanda House 2 Parktown	ezekiel.monyamane@transnet.net	
Mr	Fiff	Sam	Environmental Manager: Freight Rail	PO Box 255 BLOEMFONTEIN 9300	sam.fiff@transnet.net	
TELKOM						
Ms	van den Heever	Heleen	Ops Manager Central Region	Private Bag X20700 BLOEMFONTEIN 9300	vdheevhd@telkom.co.za	
Ms	Peters	Ihlaam	Wayleave Officer	10 Jan Smuts Drive Pinelands CAPE TOWN 7404	ihlaamp@telkom.co.za ihlaamp@openseve.co.za	
WESSA						
Mr	Griffiths	Morgan	Environmental Governance Programme Manager	PO Box 12444, Centrahill PORT ELIZABETH 6006	morgan.griffiths@wessa.co.za	



Appendix 8
Draft EMPr



Appendix 9

Additional Information



Appendix 9A

Project Coordinates

WONDERHEUVEL SEF: APPLICATION SITE

COORDINATES AT CORNER POINTS (DD MM SS.sss)

POINT	SOUTH	EAST
A	S31° 17' 1.287"	E24° 42' 4.865"
B	S31° 17' 20.791"	E24° 44' 9.956"
C	S31° 18' 52.051"	E24° 43' 59.011"
D	S31° 18' 51.516"	E24° 45' 40.385"
E	S31° 19' 24.462"	E24° 45' 44.745"
F	S31° 20' 29.169"	E24° 43' 58.727"
G	S31° 20' 23.791"	E24° 43' 37.331"
H	S31° 22' 16.277"	E24° 41' 19.097"
I	S31° 23' 14.558"	E24° 40' 23.671"
J	S31° 23' 1.162"	E24° 39' 53.952"
K	S31° 23' 15.310"	E24° 38' 49.721"
L	S31° 20' 20.615"	E24° 39' 26.979"
M	S31° 20' 4.494"	E24° 40' 19.428"
COORDINATES AT CENTRE POINT (DD MM SS.sss)		
POINT	SOUTH	EAST
P	S31° 20' 3.011"	E24° 41' 58.521"

WONDERHEUVEL SEF
SUBSTATION COORDINATES (DD MM SS.sss)

NORTHERN COLLECTOR

COORDINATES AT CORNER POINTS (DD MM SS.sss)

POINT	SOUTH	EAST
SUBNC_01 (NW)	S31° 17' 19.578"	E24° 43' 55.493"
SUBNC_02 (NE)	S31° 17' 20.884"	E24° 44' 4.441"
SUBNC_03 (SE)	S31° 17' 28.145"	E24° 44' 3.612"
SUBNC_04 (SW)	S31° 17' 27.350"	E24° 43' 56.259"
COORDINATES AT CENTRE POINT (DD MM SS.sss)		
POINT	SOUTH	EAST
SUBNC_05 (C)	S31° 17' 23.863"	E24° 43' 59.924"

SUBSTATION 3

COORDINATES AT CORNER POINTS (DD MM SS.sss)

POINT	SOUTH	EAST
SUB3_01 (NW)	S31° 19' 53.127"	E24° 43' 27.035"
SUB3_02 (NE)	S31° 19' 54.025"	E24° 43' 32.742"
SUB3_03 (SE)	S31° 19' 58.873"	E24° 43' 32.905"
SUB3_04 (SW)	S31° 19' 58.021"	E24° 43' 26.143"
COORDINATES AT CENTRE POINT (DD MM SS.sss)		
POINT	SOUTH	EAST
SUB3_05 (C)	S31° 19' 56.076"	E24° 43' 29.681"

SUBSTATION 4

COORDINATES AT CORNER POINTS (DD MM SS.sss)

POINT	SOUTH	EAST
SUB4_01 (NW)	S31° 22' 52.763"	E24° 40' 26.216"
SUB4_02 (NE)	S31° 22' 52.933"	E24° 40' 30.144"
SUB4_03 (SE)	S31° 22' 56.117"	E24° 40' 30.048"
SUB4_04 (SW)	S31° 22' 55.909"	E24° 40' 26.186"
COORDINATES AT CENTRE POINT (DD MM SS.sss)		
POINT	SOUTH	EAST
SUB4_05 (C)	S31° 22' 54.426"	E24° 40' 28.153"

CENTRAL COLLECTOR

COORDINATES AT CORNER POINTS (DD MM SS.sss)

POINT	SOUTH	EAST
SUBCC_01 (N)	S31° 20' 59.220"	E24° 42' 32.522"
SUBCC_02 (E)	S31° 21' 3.190"	E24° 42' 37.513"
SUBCC_03 (S)	S31° 21' 7.371"	E24° 42' 31.975"
SUBCC_04 (W)	S31° 21' 3.547"	E24° 42' 26.787"
COORDINATES AT CENTRE POINT (DD MM SS.sss)		
POINT	SOUTH	EAST
SUBCC_05 (C)	S31° 21' 3.321"	E24° 42' 32.185"



Appendix 9B
DEA Pre-App Meeting Minutes

Stephan Jacobs

From: Andrea Gibb
Sent: Thursday, 27 June 2019 3:18 PM
To: Muhammad Essop; Stephan Jacobs; Sheldon Vandrey; Coenrad Agenbach; Thabile Sangweni; Mmamohale Kabasa
Subject: RE: Pre-application Meeting Ref No: 2018-12-0003 - Umsobomvu Solar PV Facilities
Attachments: 15324_Umsobomvu PV EIAs_DEA Pre-App Meeting_Final Minutes_Ver1_20190627_.....pdf

Follow Up Flag: Follow up
Flag Status: Flagged

Good day All

Kindly find attached the final minutes of the pre-application meeting that took place on 19 February 2019 for the proposed Development of the Umsobomvu Solar Photovoltaic (PV) Facilities and Associated Grid Infrastructure near Noupoort and Middelburg in the Eastern and Northern Cape Provinces.

The minutes will also be attached to the EIA application forms that are envisaged to be submitted in mid-July 2019.

Kind Regards
Andrea Gibb
Divisional Manager
SiVEST Environmental Division



SiVEST is a Level 3 BBBEE Contributor

D +27 72 587 6525 | **T** +27 11 798 0638 | **M** +27 11 798 0600 | **E** andrag@sivest.co.za | **W** www.sivest.co.za

Engineering Consulting | Project Management | Environmental Consulting | Town & Regional Planning | Management Systems Consulting

Durban | Johannesburg | Pretoria | Pietermaritzburg | Richards Bay | Port Louis (Mauritius)

From: Muhammad Essop [mailto:MEssop@environment.gov.za]
Sent: Tuesday, 25 June 2019 08:10
To: Andrea Gibb <AndreaG@sivest.co.za>; Stephan Jacobs <StephanJ@sivest.co.za>; Sheldon Vandrey <Sheldon.vandrey@edf-re.co.za>; Coenrad Agenbach <Cagenbach@environment.gov.za>; Thabile Sangweni <TSangweni@environment.gov.za>; Mmamohale Kabasa <MKabasa@environment.gov.za>
Subject: RE: Pre-application Meeting Ref No: 2018-12-0003 - Umsobomvu Solar PV Facilities

Dear Andrea.

Apologies for the delay.

The minutes are fine and we can proceed with the project.

Regards

Muhammad Essop

Assistant Director - Strategic Infrastructure Developments

Integrated Environmental Authorisations

Department of Environmental Affairs

Private Bag X447

Pretoria

0001

(012) 399 9406

MEssop@environment.gov.za

From: Andrea Gibb <AndreaG@sivest.co.za>

Sent: Friday, June 7, 2019 11:05

To: Muhammad Essop <MEssop@environment.gov.za>; Stephan Jacobs <StephanJ@sivest.co.za>; Sheldon Vandrey <Sheldon.vandrey@edf-re.co.za>; Coenrad Agenbach <Cagenbach@environment.gov.za>; Thabile Sangweni <TSangweni@environment.gov.za>; Mmamohale Kabasa <MKabasa@environment.gov.za>

Subject: RE: Pre-application Meeting Ref No: 2018-12-0003 - Umsobomvu Solar PV Facilities

Hi Muhammad

Thank you for the feedback.

Attached is the word version as requested.

Noted, we will accept comments until the end of next week (14 June 2019).

Kind Regards

Andrea Gibb

Divisional Manager

SiVEST Environmental Division



SiVEST is a Level 3 BBBEE Contributor

D +27 72 587 6525 | **T** +27 11 798 0638 | **M** +27 11 798 0600 | **E** andrag@sivest.co.za | **W** www.sivest.co.za

Engineering Consulting | Project Management | Environmental Consulting | Town & Regional Planning | Management Systems Consulting

Durban | Johannesburg | Pretoria | Pietermaritzburg | Richards Bay | Port Louis (Mauritius)

From: Muhammad Essop [<mailto:MEssop@environment.gov.za>]

Sent: Friday, 07 June 2019 09:56

To: Andrea Gibb <AndreaG@sivest.co.za>; Stephan Jacobs <StephanJ@sivest.co.za>; Sheldon Vandrey <Sheldon.vandrey@edf-re.co.za>; Coenrad Agenbach <Cagenbach@environment.gov.za>; Thabile Sangweni <TSangweni@environment.gov.za>; Mmamohale Kabasa <MKabasa@environment.gov.za>

Subject: RE: Pre-application Meeting Ref No: 2018-12-0003 - Umsobomvu Solar PV Facilities

Dear Andrea.

Please could you send through the minutes in a word format so that we can make any changes if necessary in track.

Further note that due to the delay in time from the meeting till the minutes were presented for review and comment, we will provide comments by the end of next week.

Regards

Muhammad Essop

Assistant Director - Strategic Infrastructure Developments

Integrated Environmental Authorisations

Department of Environmental Affairs

Private Bag X447

Pretoria

0001

(012) 399 9406

MEssop@environment.gov.za

From: Andrea Gibb <AndreaG@sivest.co.za>

Sent: Wednesday, June 5, 2019 14:25

To: Stephan Jacobs <StephanJ@sivest.co.za>; Sheldon Vandrey <Sheldon.vandrey@edf-re.co.za>; Muhammad Essop <MEssop@environment.gov.za>; Coenrad Agenbach <Cagenbach@environment.gov.za>; Thabile Sangweni <TSangweni@environment.gov.za>; Mmamohale Kabasa <MKabasa@environment.gov.za>; Pfano Nengudza <pnengudza@environment.gov.za>

Subject: RE: Pre-application Meeting Ref No: 2018-12-0003 - Umsobomvu Solar PV Facilities

Good day All

As per the email below, please kindly submit your comments on the draft minutes to us by Friday 7 June 2019.

Kind Regards

Andrea Gibb

Divisional Manager

SiVEST Environmental Division



SiVEST is a Level 3 BBBEE Contributor

D +27 72 587 6525 | **T** +27 11 798 0638 | **M** +27 11 798 0600 | **E** andreag@sivest.co.za | **W** www.sivest.co.za

Engineering Consulting | Project Management | Environmental Consulting | Town & Regional Planning | Management Systems Consulting

Durban | Johannesburg | Pretoria | Pietermaritzburg | Richards Bay | Port Louis (Mauritius)

From: Andrea Gibb
Sent: Monday, 27 May 2019 14:35
To: Stephan Jacobs <StephanJ@sivest.co.za>; 'Sheldon Vandrey' <Sheldon.vandrey@edf-re.co.za>; 'MEssop@environment.gov.za' <MEssop@environment.gov.za>; cagenbach@environment.gov.za; 'TSangweni@environment.gov.za' <TSangweni@environment.gov.za>; 'Mmamohale Kabasa' <MKabasa@environment.gov.za>; 'pnengudza@environment.gov.za' <pnengudza@environment.gov.za>
Subject: Pre-application Meeting Ref No: 2018-12-0003 - Umsobomvu Solar PV Facilities

Good day All

Please find attached the Draft Minutes of the pre-application meeting that took place on 19 February 2019 for the proposed Development of the Umsobomvu Solar Photovoltaic (PV) Facilities and Associated Grid Infrastructure near Noupoort and Middelburg in the Eastern and Northern Cape Provinces.

The minutes also outline the proposed way forward in terms of applying for environmental authorisation (EA), as indicated in item 35.

We kindly request that you submit your comments on the Draft minutes to us (andreag@sivest.co.za) by 7 June 2019. The minutes will be finalised and distributed thereafter.

Kind Regards

Andrea Gibb

Divisional Manager

SiVEST Environmental Division



SiVEST is a Level 3 BBBEE Contributor

D +27 72 587 6525 | **T** +27 11 798 0638 | **M** +27 11 798 0600 | **E** andreag@sivest.co.za | **W** www.sivest.co.za

Engineering Consulting | Project Management | Environmental Consulting | Town & Regional Planning | Management Systems Consulting

Durban | Johannesburg | Pretoria | Pietermaritzburg | Richards Bay | Port Louis (Mauritius)

Disclaimer

The information contained in this communication from the sender is confidential. It is intended solely for use by the recipient and others authorized to receive it. If you are not the recipient, you are hereby notified that any disclosure, copying, distribution or taking action in relation of the contents of this information is strictly prohibited and may be unlawful.

This email has been scanned for viruses and malware, and automatically archived by **Mimecast SA (Pty) Ltd**, an innovator in Software as a Service (SaaS) for business. **Mimecast Unified Email Management ??? (UEM)** offers email continuity, security, archiving and compliance with all current legislation. To find out more, [contact Mimecast](#).

'Please consider the environment before you print this email'

'Please consider the environment before you print this email'

This message and any attachments transmitted with it are intended solely for the addressee(s) and may be legally privileged and/or confidential. If you have received this message in error please destroy it and notify the sender. Any unauthorized usage, disclosure, alteration or dissemination is prohibited. The Department of Environmental Affairs accepts no responsibility for any loss whether it be direct, indirect or consequential, arising from information made available and actions resulting there from. The views and opinions expressed in this e-mail message may not necessarily be those of Management.

Disclaimer

The information contained in this communication from the sender is confidential. It is intended solely for use by the recipient and others authorized to receive it. If you are not the recipient, you are hereby notified that any disclosure, copying, distribution or taking action in relation of the contents of this information is strictly prohibited and may be unlawful.

This email has been scanned for viruses and malware, and automatically archived by **Mimecast SA (Pty) Ltd**, an innovator in Software as a Service (SaaS) for business. **Mimecast Unified Email Management ??? (UEM)** offers email continuity, security, archiving and compliance with all current legislation. To find out more, [contact Mimecast](#).

'Please consider the environment before you print this email'

'Please consider the environment before you print this email'

This message and any attachments transmitted with it are intended solely for the addressee(s) and may be legally privileged and/or confidential. If you have received this message in error please destroy it and notify the sender. Any unauthorized usage, disclosure, alteration or dissemination is prohibited. The Department of Environmental Affairs accepts no responsibility for any loss whether it be direct, indirect or consequential, arising from information made available and actions resulting there from. The views and opinions expressed in this e-mail message may not necessarily be those of Management.

PROJECT NAME: ENVIRONMENTAL IMPACT ASSESSMENTS (EIAs) FOR THE PROPOSED DEVELOPMENT OF THE UMSOBOMVU SOLAR PHOTOVOLTAIC (PV) FACILITIES AND ASSOCIATED GRID INFRASTRUCTURE NEAR NOUPOORT AND MIDDELBURG IN THE EASTERN AND NORTHERN CAPE PROVINCES

PRE-APP MEETING REF NO.: 2018-12-0003

PROJECT NO: 15324

DESCRIPTION: PRE-APPLCIATION MEETING WITH DEPARTMENT OF ENVIRONMENTAL AFFAIRS (DEA)

VENUE: ENVIRONMENT HOUSE, 473 STEVE BI O ROAD, ARCADIA, PRETORIA

DATE AND TIME: TUESDAY, 19 FEBRUARY 2019 AT 10H00

Representative	Company / Designation	ID	Tel	Email
Andrea Gibb	SiVEST SA (Pty) Ltd (SiVEST) – Divisional Manager	AG	011 798 0 00	andrea.g sivist.co. a
Stephan Jacobs	SiVEST – Environmental Consultant	S	011 798 0 00	stephan.j sivist.co. a
Sheldon Vandrey	EDF Renewables (Pty) Ltd (EDF) – Development Project Manager	SV	041 50 4900	sheldon.vandrey edf-re.co. a
Muhammad Essop	Department of Environmental Affairs (DEA) – Assistant Director: Strategic Infrastructure Developments	ME	012 399 940	messop environment.gov. a
Coenrad Agenbach	DEA – Deputy Director: Integrated Environmental Authorisations	CA	012 399 9403	cagenbach environment.gov. a
Thabile Sangweni	DEA – Reviewer	TS	012 399 9409	tsangweni environment.gov. a
Mmamohale abasa	DEA – Reviewer	M	012 399 9420	mkabasa environment.gov. a
Pfano Nengud a	DEA – Learner	PN	012 399 8985	pnengud a environment.gov. a

APOLOGIES:

None

FINAL MEETING MINUTES:

ITEM NO.	ITEM DESCRIPTION	ACTION
Introduction		
1.	All representatives from SiVEST (appointed environmental assessment practitioner - EAP), the DEA and EDF (the applicant) introduced themselves.	N/A
2.	S provided an overview of the project, including the grid connection infrastructure alternatives and the location. It was noted that EDF are proposing to develop three (3) adjacent solar photovoltaic (PV) facilities, comprising of two (2) PV arrays each. The location of the proposed facilities and the grid infrastructure were presented and it was explained that two (2) of the solar PV facilities (Mooi Plaats and Wonderheuvel) are located	N/A

ITEM NO.	ITEM DESCRIPTION	ACTION
	within the Umsobomvu Local Municipality in the Northern Cape near Noupoot and one (1) of the proposed solar PV facilities is located within the Inxuba Yethemba Local Municipality in the Eastern Cape near Middelburg. The grid infrastructure alternatives traverse both the Northern and Eastern Cape Provinces.	
Solar PV Facilities		
3.	S noted that the intended process is to submit three (3) applications - one for each PV facility covering 2 x PV arrays and associated grid infrastructure. Post environmental authorisation (EA) the intention would be to split the grid infrastructure from the solar PV facilities (to allow hand over to Eskom) and separate each solar PV project into two (2) PV facilities.	N/A
4.	SV added that EDF intend to have three (3) projects ready for the REIPPPP round Bid window and each solar PV project would be split (after the round bid window) to allow for a further three (3) projects to be Bid in round 7.	N/A
5.	ME questioned the intended process and suggested that six () applications should be made for the solar PV projects. He added that if three (3) applications were submitted they would be reviewed in their entirety and therefore if environmental issues are identified for part of the project this would influence the entire application and EA could be refused The same issue would occur if there was an appeal or objection related to part of the project.	N/A
	ME explained that a Part 2 Amendment would be required to split the projects and that this is a 197-day process that take over six () months to complete. The process results in duplication as additional reports need to be compiled and made available for public review and comment. This process will also put the project at risk as an appeal against the amendment application decision would suspend the EA. The appeal process takes a minimum of ninety (90) days, which could prevent the projects from reaching financial close.	N/A
7.	CA added that Part 2 Amendment processes required to split projects into various components are complicated processes that require additional public participation and could result in appeals.	N/A
8.	SV noted that the suggested approach of six () applications for the solar PV facilities and confirmed that he would take this recommendation forward to the management at EDF.	SV
9.	S noted that the proposed application sites for the Mooi Plaats and Wonderheuvell solar PV facilities traverse the same farm portion i.e. Remainder of the Farm Mooi Plaats No. 121. This is being proposed as the PV development area will be determined based on the onsite environmentally sensitive areas which are still to be determined during the EIA process. The DEA was requested to confirm whether this approach would be acceptable.	N/A
10.	ME noted that the same farm (Farm Mooi Plaats No. 121) can be included in both applications provided that the PV development footprints and alternatives assessed for each project do not overlap.	N/A
11.	CA suggested that specialist should proceed to assess the application sites but that the application forms should only be submitted once the viability of the site and all sensitive areas are understood.	SiVEST
12.	ME confirmed that for solar PV projects a Final Layout Plan and a Final Environmental Management Programmes (EMPr) should be submitted to the DEA for approval within the Final Environmental Impact Assessment Report (FEIAR).	SiVEST
Grid Connection Infrastructure		
13.	TS requested that the grid infrastructure alternatives be explained.	N/A
14.	S presented and explained the grid infrastructure alternatives.	N/A
15.	ME noted that the sharing of substations should be carefully worded and explained. As only one collector substation will ultimately be constructed, although more than one will be	SiVEST / DEA

EDF Renewables

Proposed Umsobomvu Solar PV Facilities – Final Minutes for DEA Pre-Application Meeting

27 June 2019

ITEM NO.	ITEM DESCRIPTION	ACTION
	assessed and potentially authorised, the EA will need to note that once the collector substation is built it will invalidate the authorisations for all other collector substations.	
1 .	CA questioned the status of Hydra D Main Transmission Substation (MTS).	N/A
17.	SV noted that according to Eskom Hydra D MTS is scheduled to be constructed in 2021. He further noted that if EDF are preferred bidders they will construct Hydra D and they have the funds available to do so.	N/A
18.	CA queried if none of the proposed substations (i.e. Phe ukhomoya, Hydra D, Central Collector) have been constructed.	N/A
19.	SV confirmed that none of the proposed substations have been constructed.	N/A
20.	ME noted that the grid infrastructure should be assessed as separate Basic Assessment (BA) process, and the required portion of the authorised power line could be constructed in part to service one or more of the solar PV projects if awarded preferred bidder status and constructed. However, ideally three (3) BA processes should be undertaken for the grid infrastructure.	N/A
22.	AG suggested that as the grid infrastructure EAs will be handed over to Eskom for operation, the solar PV projects should also assess and include any infrastructure that may be required to be constructed following hand over of the Grid EA to Eskom.	N/A
Public Participation Process		
23.	ME recommended that each Special Purpose Vehicle (SPV) should provide a comment letter noting that it is not opposed to the PV project proposed by another SPV or the associated grid infrastructure should it traverse the SPVs application site. This will avoid later appeals should one or more of the projects be sold to different independent power producers (IPPs).	EDF
24.	S requested confirmation as to whether a combined public participation process (PPP) can be undertaken, with specific organs of state targeted per province and project specific landowner consent.	N/A
25.	ME confirmed that a combined PPP can be undertaken with specific activities as proposed. It must be ensured that the correct provincial authorities are included in the PPP.	SiVEST
	ME noted that if the grid connection infrastructure is not separated out as a separate BA/s, landowner consent will also be required from all landowners directly affected by the grid infrastructure alternatives, as majority of the project would not be a linear activity.	N/A
2 .	CA noted that reasonable steps need to be taken to notify and prove that occupiers of affected properties have been notified and proof should be included within the draft and final reports.	SiVEST
Specialist Studies		
27.	S indicated the specialist studies proposed and requested confirmed that all studies have been included and if the DEA has any suggestions.	N/A
	The DEA confirmed that they are in agreement with the suggested studies.	N/A
28.	ME stated that all reports should include a detailed cumulative impact assessment which meets all the DEAs requirements.	SiVEST
29.	TS noted that the Avifaunal specialist should walk the existing power lines routes.	SiVEST
30.	ME noted that Department of Agriculture, Forestry and Fisheries (DAFF) may request that a detailed Agricultural Potential and Soil Impact Assessment by undertaken if they identify that the area has a high agricultural potential.	N/A
31.	ME noted that any deviation from the Birdlife South Africa (BLSA) Guidelines should be motivated, however undertaking an assessment in the incorrect season will not be considered to be an acceptable deviation. All specialists should ensure that their assessments are undertaken in the correct season.	N/A
33.	ME confirmed that the specialists can compile one (1) combined report covering the proposed solar PV projects and grid infrastructure, provided the findings and impact assessment	SiVEST

EDF Renewables

Proposed Umsobomvu Solar PV Facilities – Final Minutes for DEA Pre-Application Meeting

27 June 2019

ITEM NO.	ITEM DESCRIPTION	ACTION
	sections are project specific. The reports should not be generalised but should provide specific results for each project.	
	ME noted that all studies should be based on the worst case scenario. For example the visual assessment should be based on the tallest possible PV panels.	SiVEST
34.	S noted that an ecological (fauna and flora) assessment is being undertaken and will investigate the potential impacts of the project on Critical Biodiversity Areas (CBAs) as the proposed project traverses CBA 1 and CBA 2 areas.	N/A
35.	ME noted that in terms of CBAs the Draft National Biodiversity Offset Policy should be consulted. Developing within a CBA will require an offset and the DEA will not accept financial offsets.	SiVEST
32.	The Transportation Impact Assessment should suggest the best way to access the site and the South African National Roads Agency Limited (SANRAL) should be engaged with.	SiVEST
General		
34.	CA noted that all legislated timeframes should be adhered to in order to prevent the applications from lapsing.	SiVEST
34.	Draft and final reports should be submitted as one (1) colour hard copy and one (1) USB electronic copy. In addition, the DEA Biodiversity Directorate should be contacted to find out how many copies they require. All submissions should clearly be addressed to the correct official.	SiVEST
Post Meeting Notes and Way Forward		
35.	<p>Following the pre-application meeting SV communicated the outcome of the meeting to the management at EDF. AG also consulted with CA and ME from the DEA and based the discussions, the proposed way forward for the solar PV facilities and associated grid infrastructure is as follows:</p> <ul style="list-style-type: none"> ▪ Undertake three (3) EIAs – one (1) for each solar PV facility. ▪ Undertake three (3) BAs – one (1) for each associated grid infrastructure connection. ▪ Each specialist will compile one (1) combined report that assesses all three (3) solar PV facilities and all three (3) associated grid connection infrastructure options. The reports will include separate impact ratings and assessments for each project. ▪ The specialists will assess the entire application sites during the scoping phase, identify on-site sensitive and no-go areas. ▪ The layout and maximum output capacity for each solar PV facility will be determined based on the environmentally sensitive and no-go areas identified by the specialists. ▪ The proposed layout and alternatives will be presented in the scoping reports and will be put forward for further investigation in the EIA phase. ▪ The Remainder of the Farm Mooi Plaats No. 121 will be included in the application sites for both Mooi Plaats and Wonderheuvel solar PV facilities, however the development footprints and alternatives will not overlap. ▪ A combined PPP will be undertaken for all six () applications (3x EIAs and 3x BAs), with specific organs of state targeted per province and project specific landowner consent obtained. ▪ The three (3) BA processes for the grid connection infrastructure will be initiated once the final scoping report (FSR) has been accepted by the DEA. 	SiVEST / EDF
3 .	Comments on the Draft minutes were received by 25 une 2019 and the minutes were thereafter finalised and distributed.	ALL

EDF Renewables

Proposed Umsobomvu Solar PV Facilities – Final Minutes for DEA Pre-Application Meeting
27 une 2019



Appendix 9C
Specialist ToR



PROPOSED UMSOBOMVU SOLAR PV ENERGY FACILITIES

SPECIALIST REPORTING REQUIREMENTS

SCOPING PHASE

Specialists are requested to provide **one** (1) scoping phase report assessing all three Umsobomvu application sites (i.e. Mooi Plaats, Wonderheuvel and Paarde Valley). The report should however include separate assessment and impact rating chapters/sections for each of the three solar PV facilities and their respective grid connection alternatives.

1 IMPACT RATING METHODOLOGY

The impacts of each solar PV project (during the Construction, Operation and Decommissioning Phases) are to be assessed and rated according to the methodology developed by SiVEST and Specialists will be required to make use of the impact rating matrix provided (in Excel format) for this purpose. Please note that the significance of Cumulative Impacts should also be rated in this section. Both the methodology and the rating matrix have been provided in the project information pack which can be accessed via the following link to OneDrive:

<https://1drv.ms/f/s!Al6p9GVipkSfbyjpNzoWWfGln6Y>

2 CUMULATIVE IMPACT ASSESSMENT

Cumulative impact assessments must be undertaken for each of the three solar PV facilities to determine the cumulative impact that will materialise should other Renewable Energy Facilities (REFs) and large scale industrial developments be constructed within 35kms of the proposed development.

The cumulative impact assessment must contain the following:

- A cumulative environmental impact statement noting whether the overall impact is acceptable; and
- A review of the specialist reports undertaken for other REFs and an indication of how the recommendations, mitigation measures and conclusion of the studies have been considered.

In order to assist the specialists in this regard, SiVEST has provided the following documentation/data in the information pack:

- A summary table listing all REFs identified within 35kms of the proposed solar PV facilities;
- A map showing the location of the identified REFs;
- ML files; and
- Relevant EIA/BA reports, that could be obtained.

3 COMPARATIVE ASSESSMENT OF ALTERNATIVES

The two grid connection infrastructure alternatives for each solar PV project must be comparatively assessed as per the table provided in the information pack.

4 GENERAL SUBMISSION REQUIREMENTS

In addition to the above, please ensure that your specialist report includes the following:

- A table at the beginning of your report cross referencing how the requirements for specialist reports in accordance with Appendix of the EIA Regulations, 2014 (as amended) has been adhered to. An MS Word version has been provided in the information pack.
- A thorough overview of all applicable legislation, guidelines.
- Identification of sensitive areas to be avoided.
- Recommend mitigation measures in order to minimise the impact of the proposed development.
- Provide implications of specialist findings for the proposed development (e.g. permits, licenses etc.).
- Specify if any further assessment will be required in the EIA phase.
- Include an Impact Statement, concluding whether the project can be authorised or not.
- A copy of the Specialist Declaration of Interest form, containing original signatures, must be appended to all Draft and Final Reports. This form has been included in the information pack. Please note that the undertaking/affirmation under oath section of the report must be signed by a Commissioner of Oaths.

5 REPORT / DATA FORMATS

- Specialist scoping phase reports must be provided in MS Word format.
- Where maps have been inserted into the report, we will require a separate map set in PDF format for inclusion in our submission.
- Where figures and/or photos have been inserted into the report, we will require the original graphic in jpg format for inclusion in our submission.
- Delineated areas of sensitivity must be provided in either ESRI shape file format or Google Earth ML format. Sensitivity classes must be included in the attribute tables with a clear indication of which areas are “No-Go” areas.