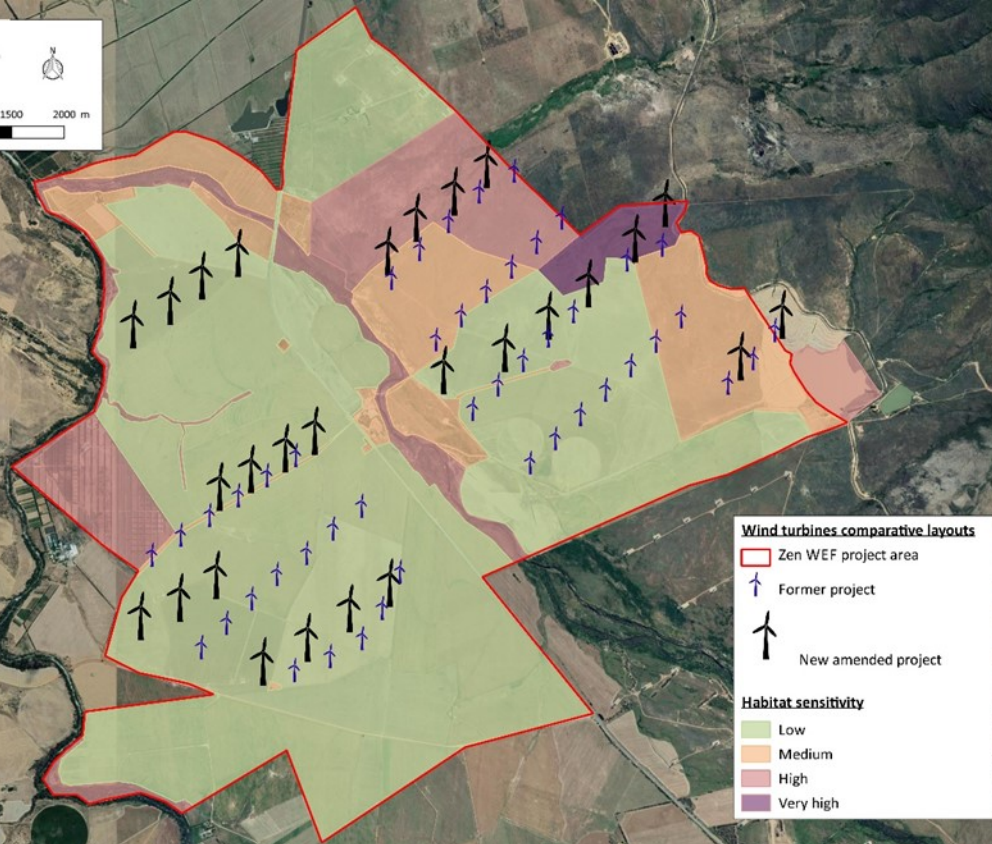


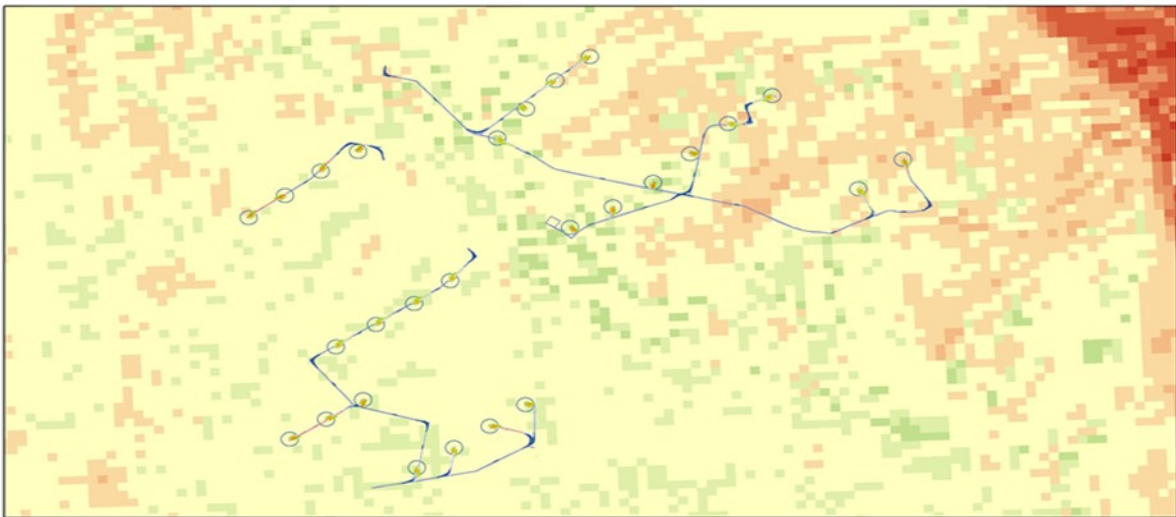
Wind turbines comparative layouts

-  Zen WEF project area
-  Former project
-  New amended project
-  Bat Roosts Roosts Zen Point
-  Bat Roost (500m Buffer)
- Sensitive Features**
-  River vegetation_300m
-  Streams_300m
-  Trees_200m
-  Trees_300m
-  Water body_300m
-  Rivers & Dams (200m Buffer)



0 500 1000 1500 2000 m





Legend

Layout

- (temporary) Platforms pads
- Path to create
- Path to updated
- Sub station
- Turn to create
- Wind turbine

- (temporary) Platforms pads/blades
- (temporary) Platforms pads
- Crane area
- Path to create

Land capability (DAFF)

- | | |
|--|---|
| ■ 02. Very low | ■ 06. Low-Moderate |
| ■ 03. Low-Very low | ■ 07. Low-Moderate |
| ■ 04. Low-Very low | ■ 08. Moderate |
| ■ 05. Low | ■ 09. Moderate-High |
| | ■ 10. Moderate-High |

0 0.5 1 2 3 Kilometers



Zen Wind Energy Facility

Overall Environmental Sensitivity Map

Legend

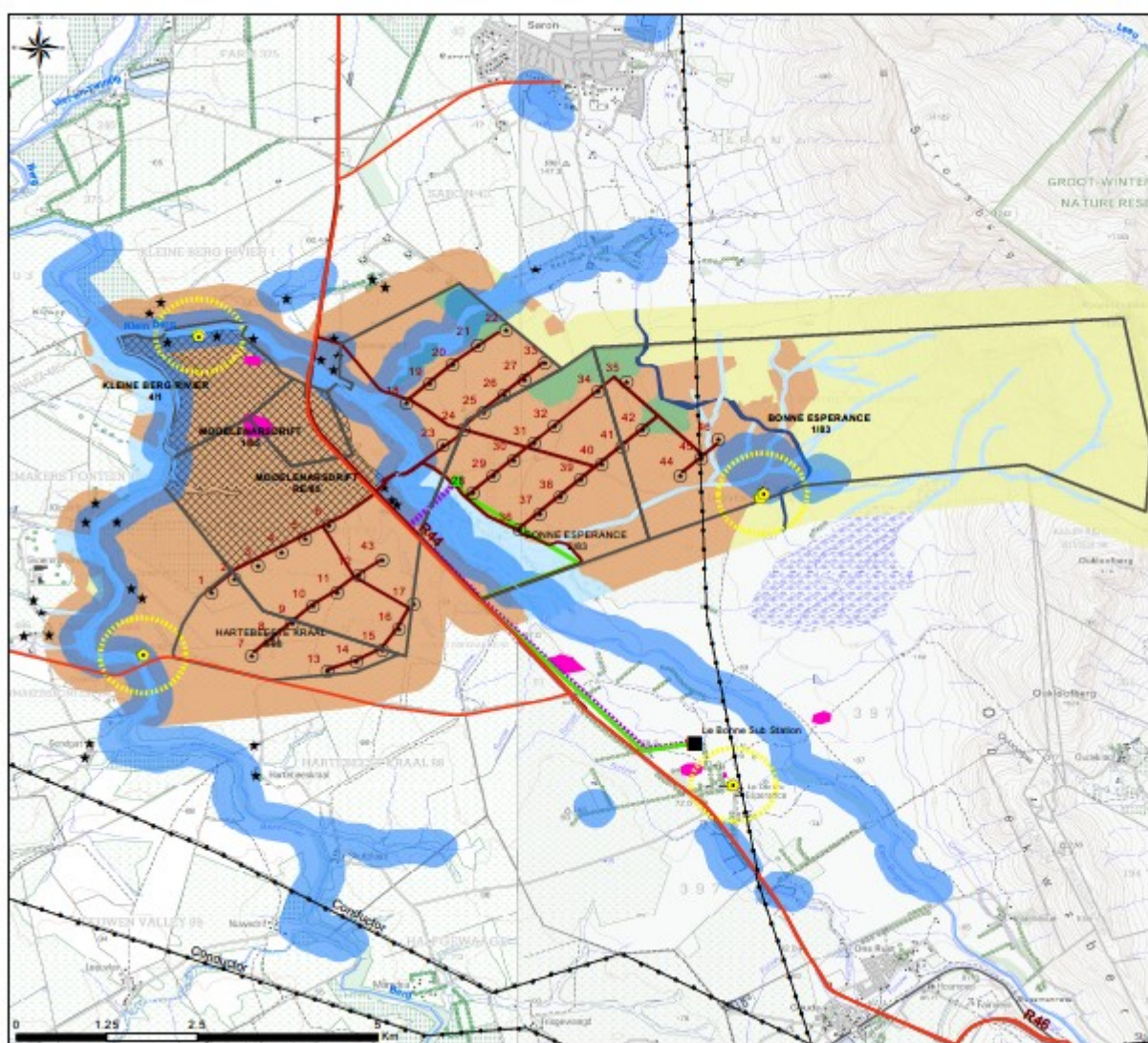
- Existing Power Line
- Main road
- Perennial river
- Non-perennial river
- WEF Farm Portions

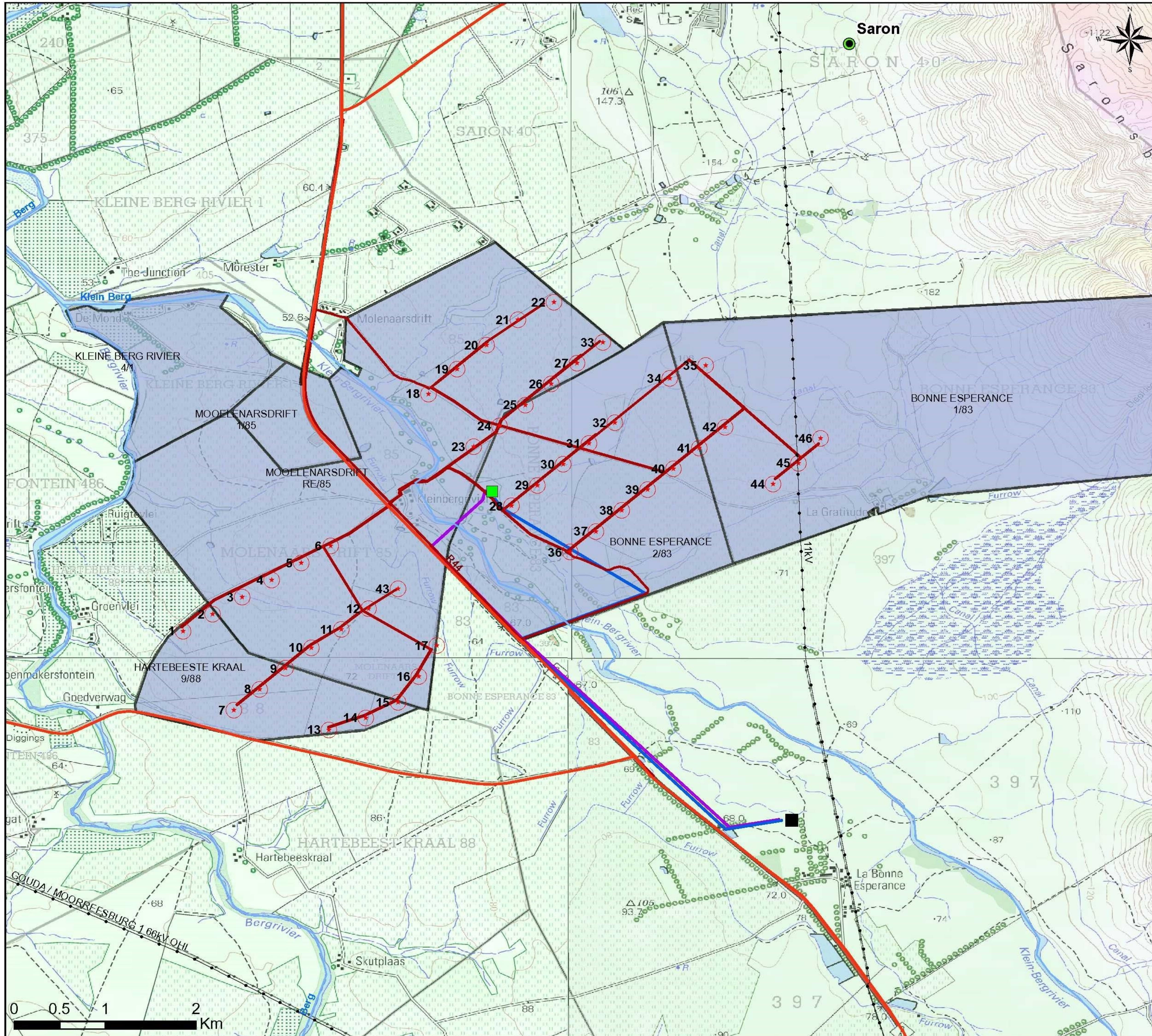
Zen Layout Plan:

- Wind turbines
- Zen Sub Station
- Le Bonne Sub Station
- Access roads
- Power Line Route 1
- Power Line Route 2

Environmental sensitivities:

- Noise sensitive receptors
- Bat Roosts
- Bat Roost (500m buffer)
- Rivers & Dams
- Canal
- Drainage Features
- Natural vegetation
- Semi-natural vegetation
- Transformed Area
- Heritage sites (LSA)
- High agricultural potential land





Zen Wind Energy Facility Layout

Legend

- Existing Power Line
- Road
- Perennial river
- Non-perennial river
- WEF Farm Portions

Zen Layout Plan:

- Wind turbines
- Zen Sub Station
- Le Bonne Sub Station
- Access roads
- Power Line route 1
- Power Line route 2

