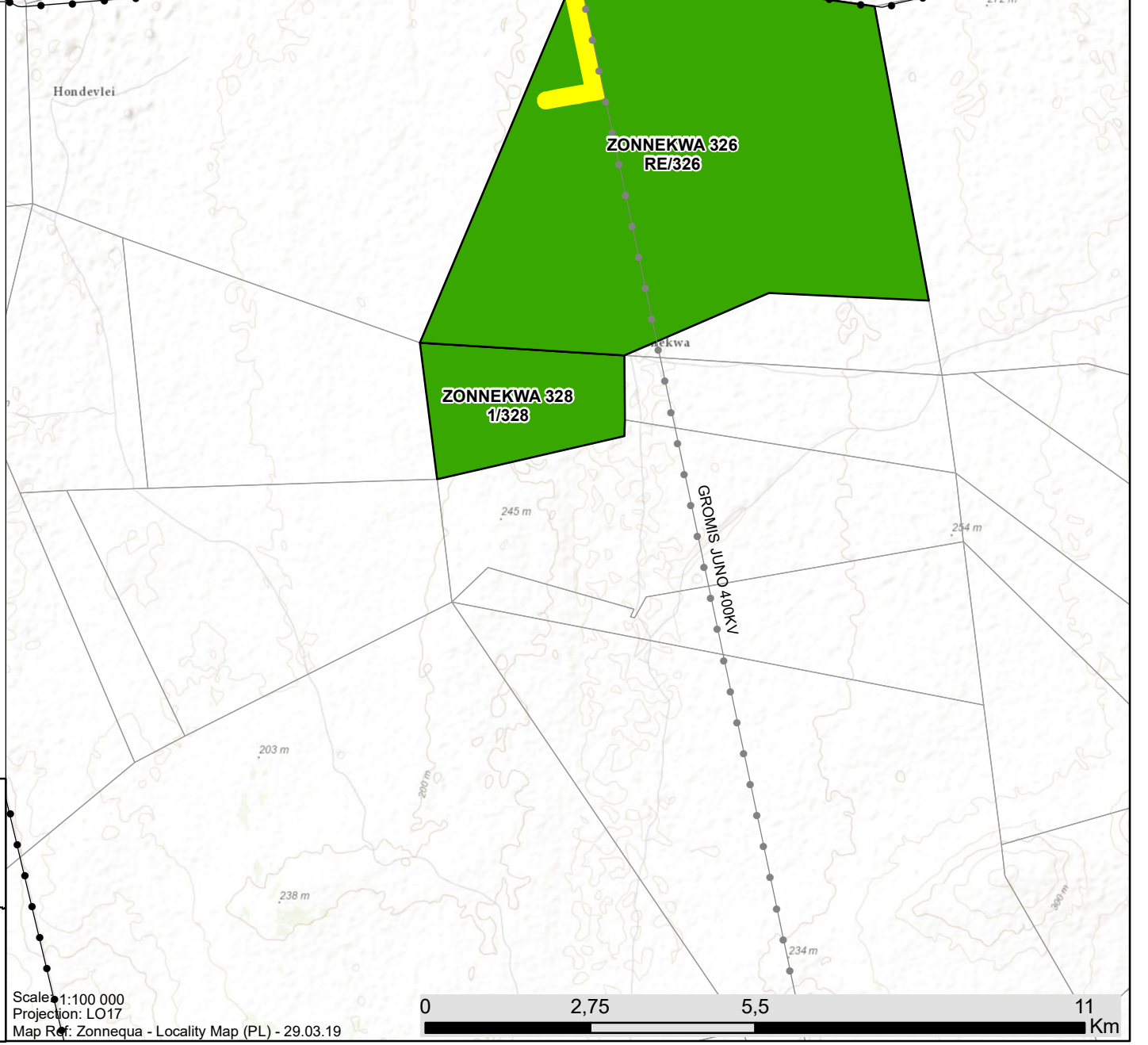
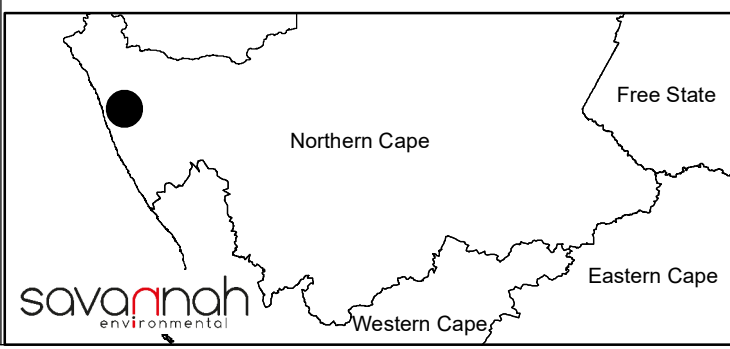


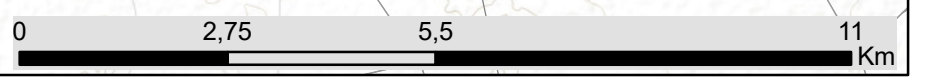
Grid Connection Infrastructure for the Zonnequa Wind Farm, Northern Cape

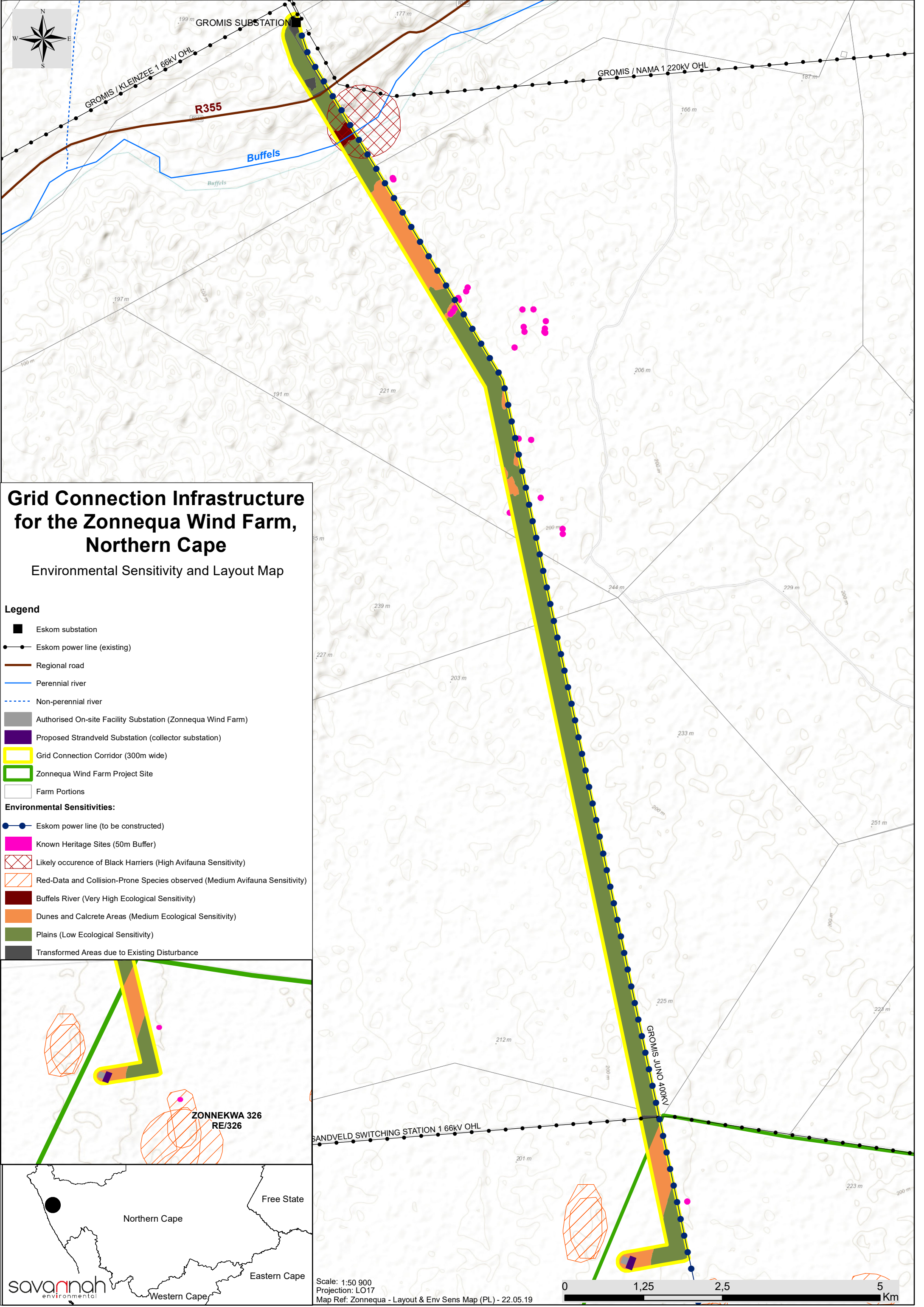
Locality Map

- Legend**
- Town
 - Eskom substation
 - Eskom power line (to be constructed)
 - Eskom power line (existing)
 - Regional road
 - Perennial river
 - - - Non-perennial river
 - Grid Connection Corridor (300m wide)
 - Zonnequa Wind Farm Project Site
 - Farm Portions



Scale: 1:100 000
 Projection: LO17
 Map Ref: Zonnequa - Locality Map (PL) - 29.03.19

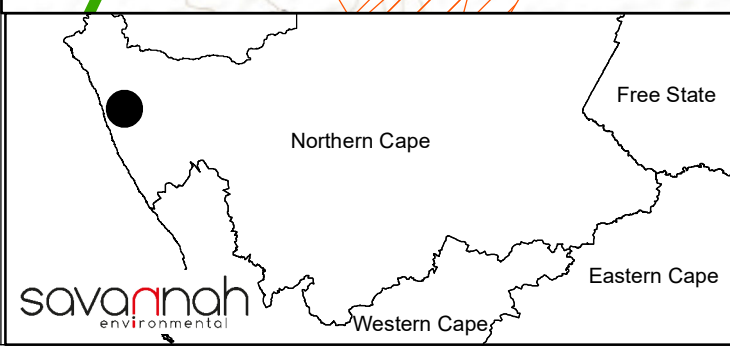
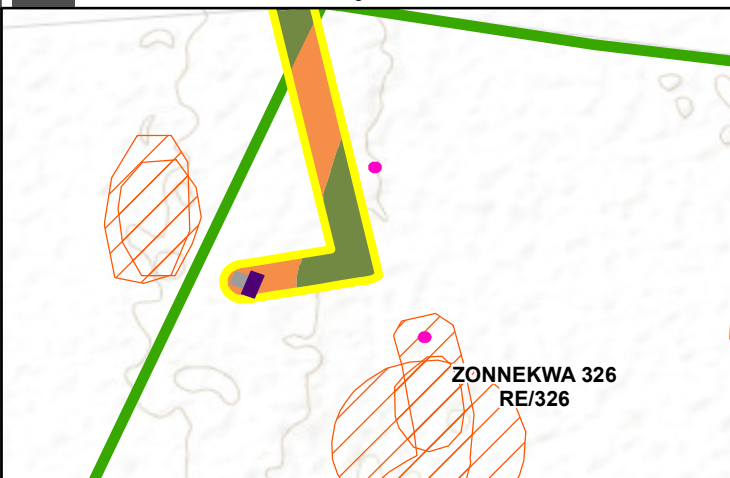




Grid Connection Infrastructure for the Zonnequa Wind Farm, Northern Cape

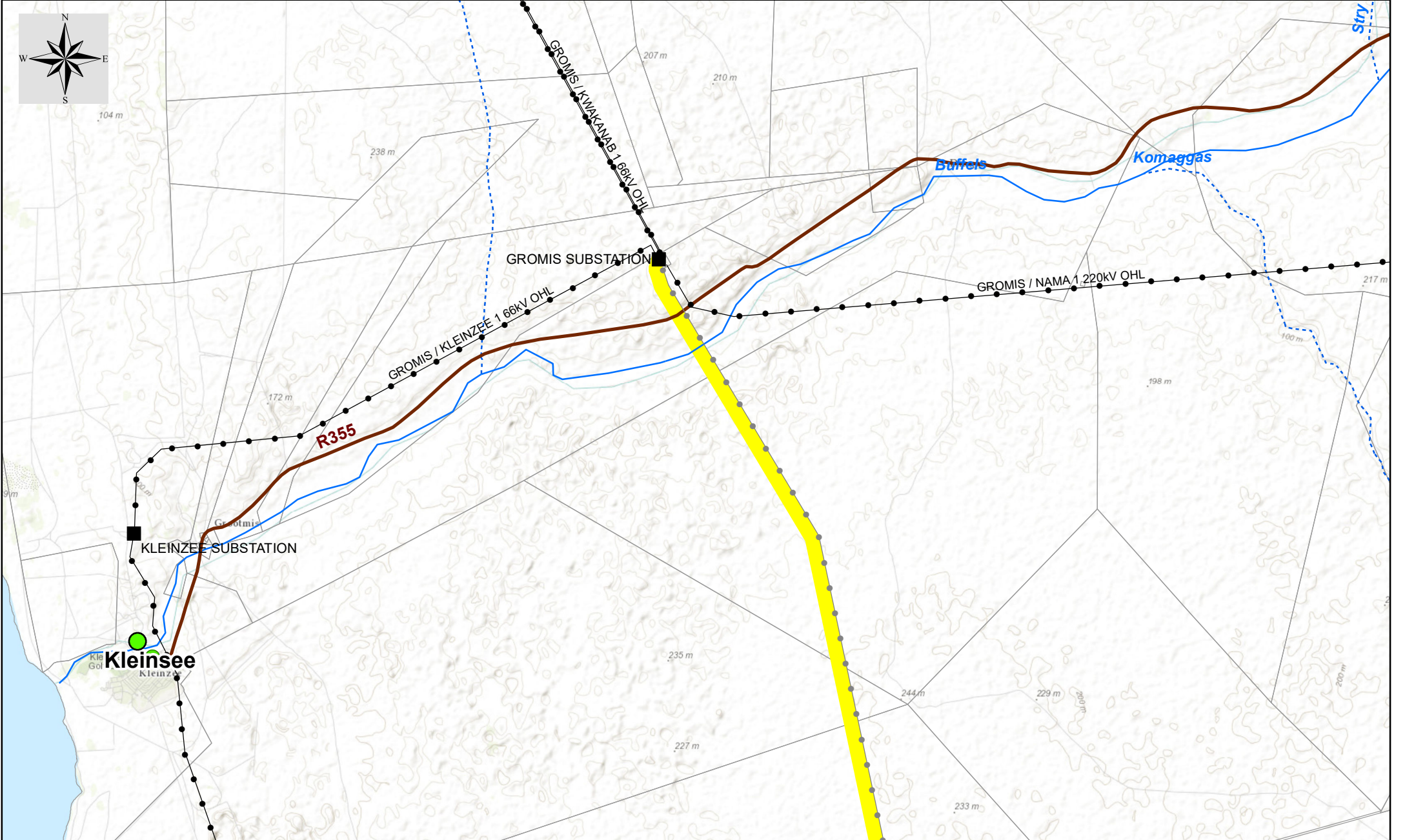
Environmental Sensitivity and Layout Map

- Legend**
- Eskom substation
 - Eskom power line (existing)
 - Regional road
 - Perennial river
 - - - Non-perennial river
 - Authorised On-site Facility Substation (Zonnequa Wind Farm)
 - Proposed Strandveld Substation (collector substation)
 - Grid Connection Corridor (300m wide)
 - Zonnequa Wind Farm Project Site
 - Farm Portions
- Environmental Sensitivities:**
- Eskom power line (to be constructed)
 - Known Heritage Sites (50m Buffer)
 - Likely occurrence of Black Harriers (High Avifauna Sensitivity)
 - Red-Data and Collision-Prone Species observed (Medium Avifauna Sensitivity)
 - Buffels River (Very High Ecological Sensitivity)
 - Dunes and Calcrete Areas (Medium Ecological Sensitivity)
 - Plains (Low Ecological Sensitivity)
 - Transformed Areas due to Existing Disturbance



Scale: 1:50 900
 Projection: LO17
 Map Ref: Zonnequa - Layout & Env Sens Map (PL) - 22.05.19

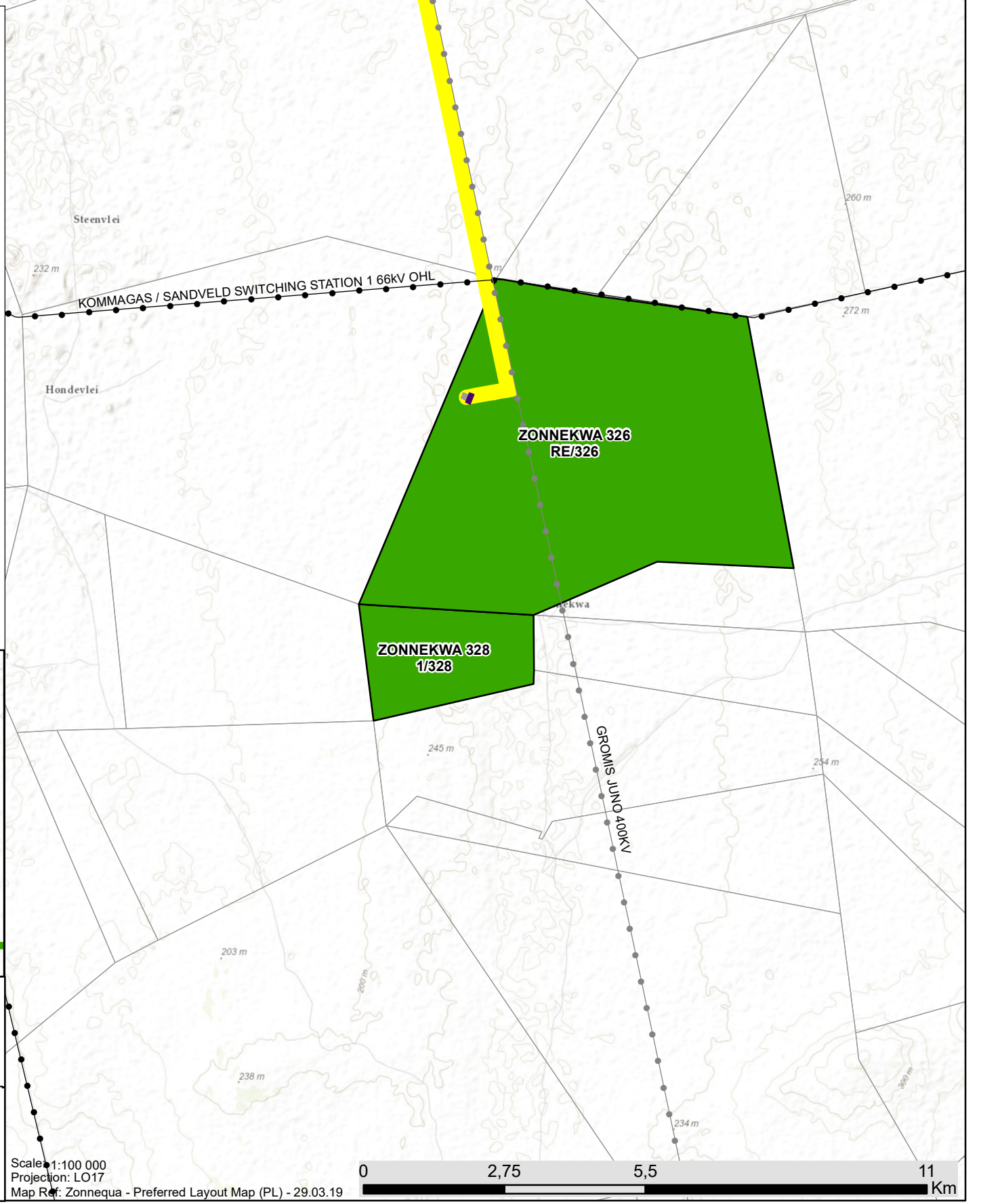
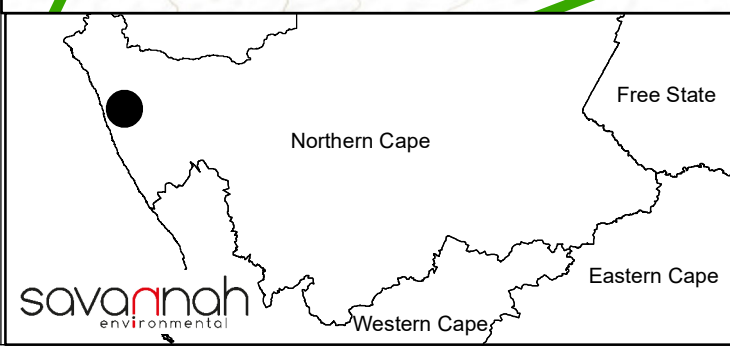
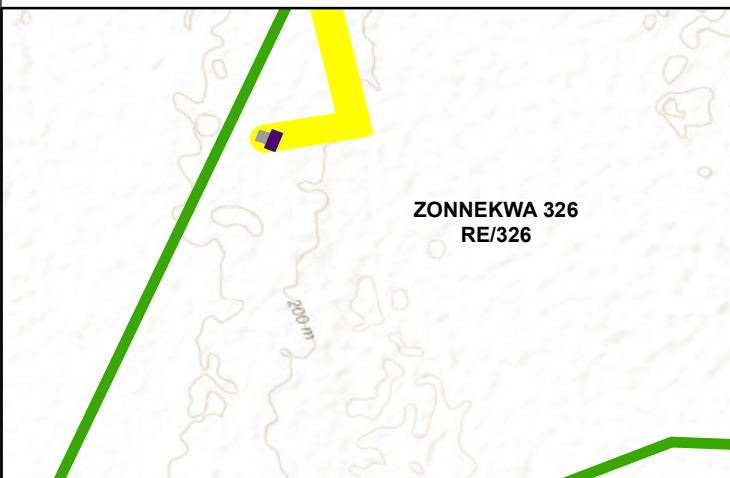




Grid Connection Infrastructure for the Zonnequa Wind Farm, Northern Cape

Preferred Layout Map

- Legend**
- Town
 - Eskom substation
 - Eskom power line (to be constructed)
 - Eskom power line (existing)
 - Regional road
 - Perennial river
 - Non-perennial river
 - Authorised On-site Facility Substation (Zonnequa Wind Farm)
 - Proposed Strandveld Substation (collector substation)
 - Grid Connection Corridor (300m wide)
 - Zonnequa Wind Farm Project Site
 - Farm Portions



Scale: 1:100 000
 Projection: LO17
 Map Ref: Zonnequa - Preferred Layout Map (PL) - 29.03.19

Appendix K: Grid Connection Corridor Coordinates

Grid connection corridor coordinates (the grid connection infrastructure for the Zonnequa Wind Farm will be developed within the 300m wide corridor):

Coordinates		
	Latitude (S)	Longitude (E)
Starting point (within the authorised Zonnequa Wind Farm project site)	29° 46' 36,621" S	17° 13' 55,984" E
Middle Point	29° 41' 6,576" S	17° 13' 12,032" E
End point (existing Gromis Substation)	29° 35' 57,458" S	17° 10' 44,887" E