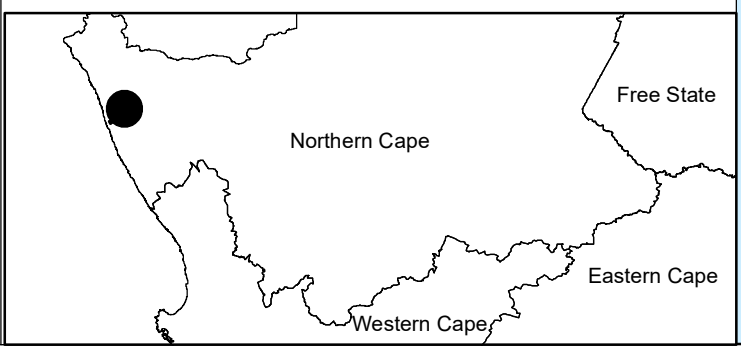


# Zonnequa Wind Farm, Northern Cape

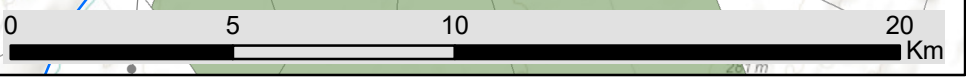
## Locality Map

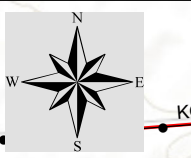
### Legend

- Town
- Eskom substation
- Eskom power line (to be constructed)
- Eskom power line (existing)
- Regional road
- Perennial river
- Non-perennial river
- Namaqua National Park
- Zonnequa Wind Farm Project Site
- Farm Portions



Scale: 1:170 000  
 Projection: LO17  
 Map Ref: Zonnequa - Locality Map (WF) - 06.06.18





# Zonnequa Wind Farm, Northern Cape

Layout Map

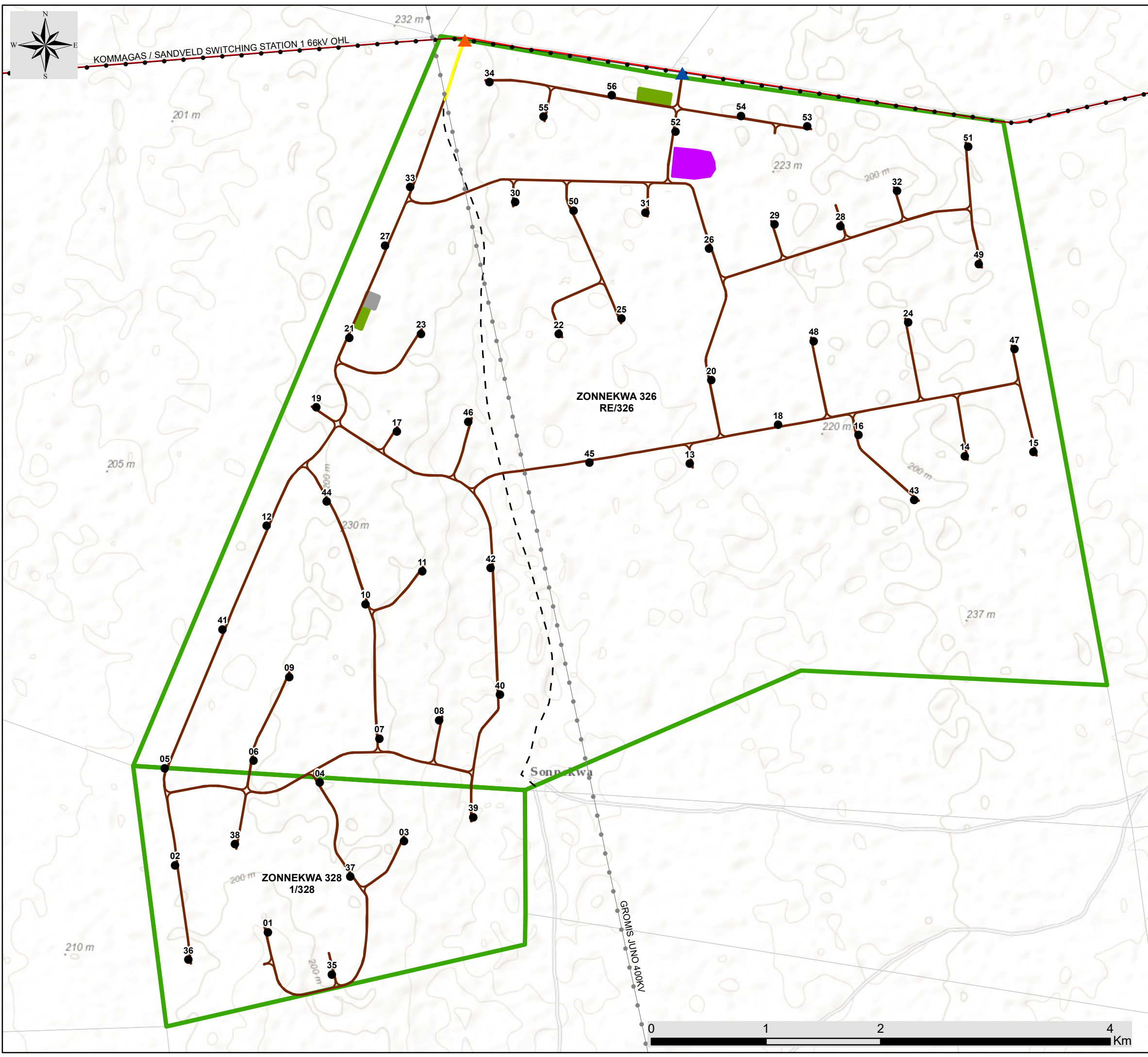
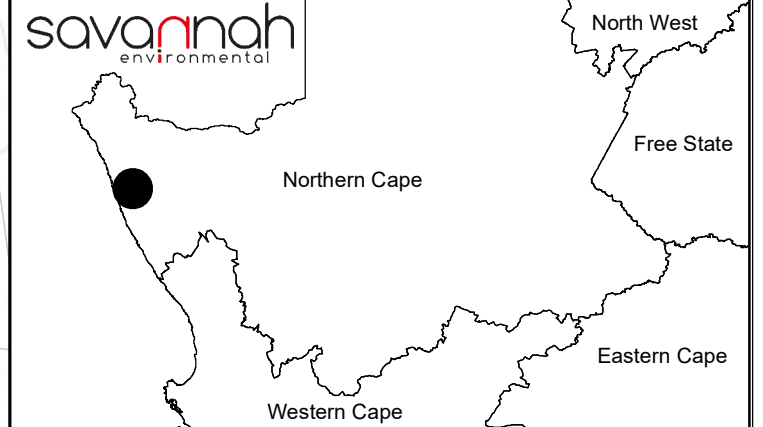
## Legend

- Eskom power line (to be constructed)
- Eskom power line (existing)
- Main road
- - - Existing Farm Road
- ▭ Zonnequa Wind Farm Project Site
- ▭ Farm Portions

## Development Footprint (facility layout):

- Wind Turbine
- ▲ Access Point (existing)
- ▲ Access Point (to be constructed)
- Existing road to be upgraded
- Internal Access Roads to be constructed
- ▭ On-site Facility Substation
- ▭ Laydown Area
- ▭ O&M Buildings

Scale: 1:32 000  
Projection: LO17  
Map Ref: Zonnequa - Layout Map (WF) - 13.09.18

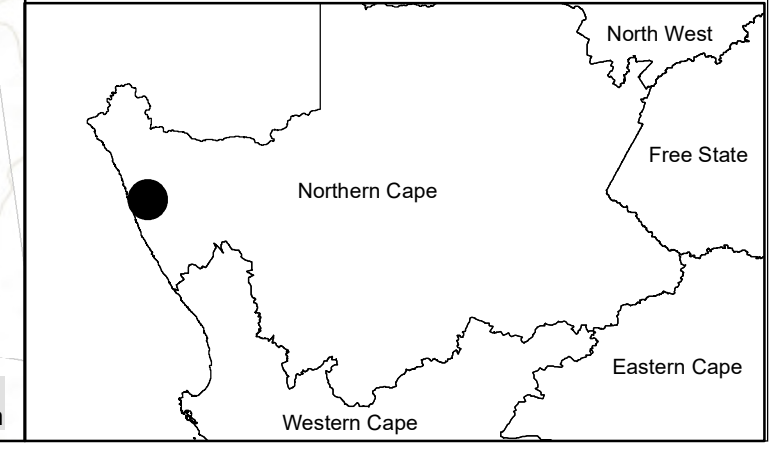
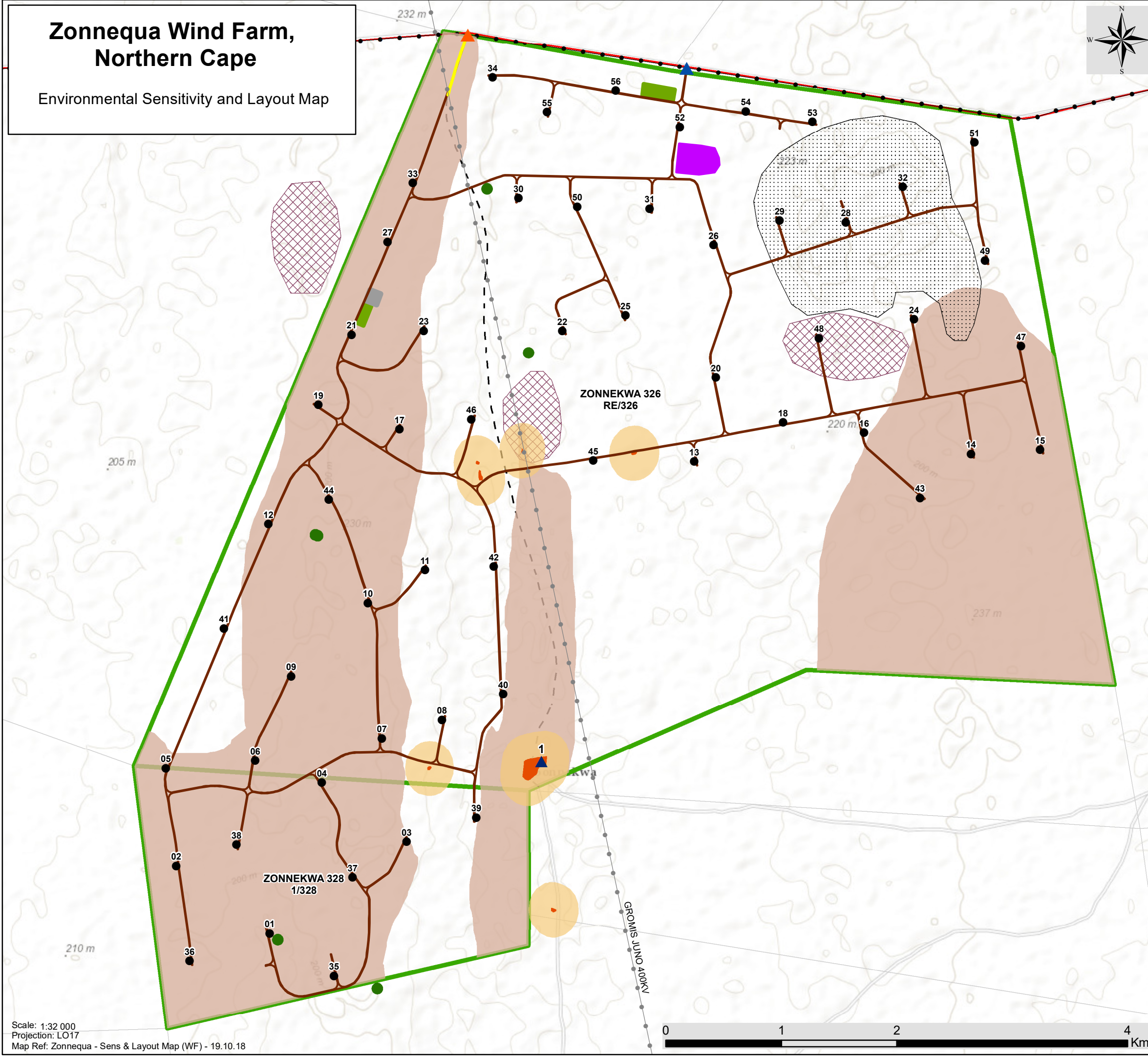


# Zonnequa Wind Farm, Northern Cape

Environmental Sensitivity and Layout Map



- ### Legend
- Eskom power line (to be constructed)
  - Eskom power line (existing)
  - Main road
  - Existing Farm Road
  - Zonnequa Wind Farm Project Site
  - Farm Portions
- ### Development Footprint (facility layout):
- Wind Turbine
  - Access Point (existing)
  - Access Point (to be constructed)
  - Existing road to be upgraded
  - Internal Access Roads to be constructed
  - On-site Facility Substation
  - Laydown Area
  - O&M Buildings
- ### Sensitive Environmental Features:
- Noise Sensitive Development
  - Significant Heritage Sites (50m buffer)
  - High Bat Sensitivity Area
  - 200m High Bat Sensitivity Buffer
  - Red Data Species Presence (Medium-Low Avifauna Sensitivity)
  - High Density Booted Eagle Flights (Medium Avifauna Sensitivity)
  - Medium Ecological Sensitivity



Scale: 1:32 000  
 Projection: LO17  
 Map Ref: Zonnequa - Sens & Layout Map (WF) - 19.10.18

**Appendix N: Site Coordinates**

*Corner point coordinates (Project Site – starting in the northern corner moving clockwise):*

<b>Coordinates</b>		
	<b>Latitude (S)</b>	<b>Longitude (E)</b>
1	29° 45' 20,023" S	17° 14' 22,691" E
2	29° 45' 43,955" S	17° 17' 25,502" E
3	29° 48' 23,438" S	17° 17' 59,643" E
4	29° 48' 19,493" S	17° 16' 20,281" E
5	29° 48' 53,566" S	17° 14' 50,604" E
6	29° 49' 37,294" S	17° 14' 50,728" E
7	29° 50' 0,765" S	17° 12' 54,287" E
8	29° 48' 46,927" S	17° 12' 43,368" E