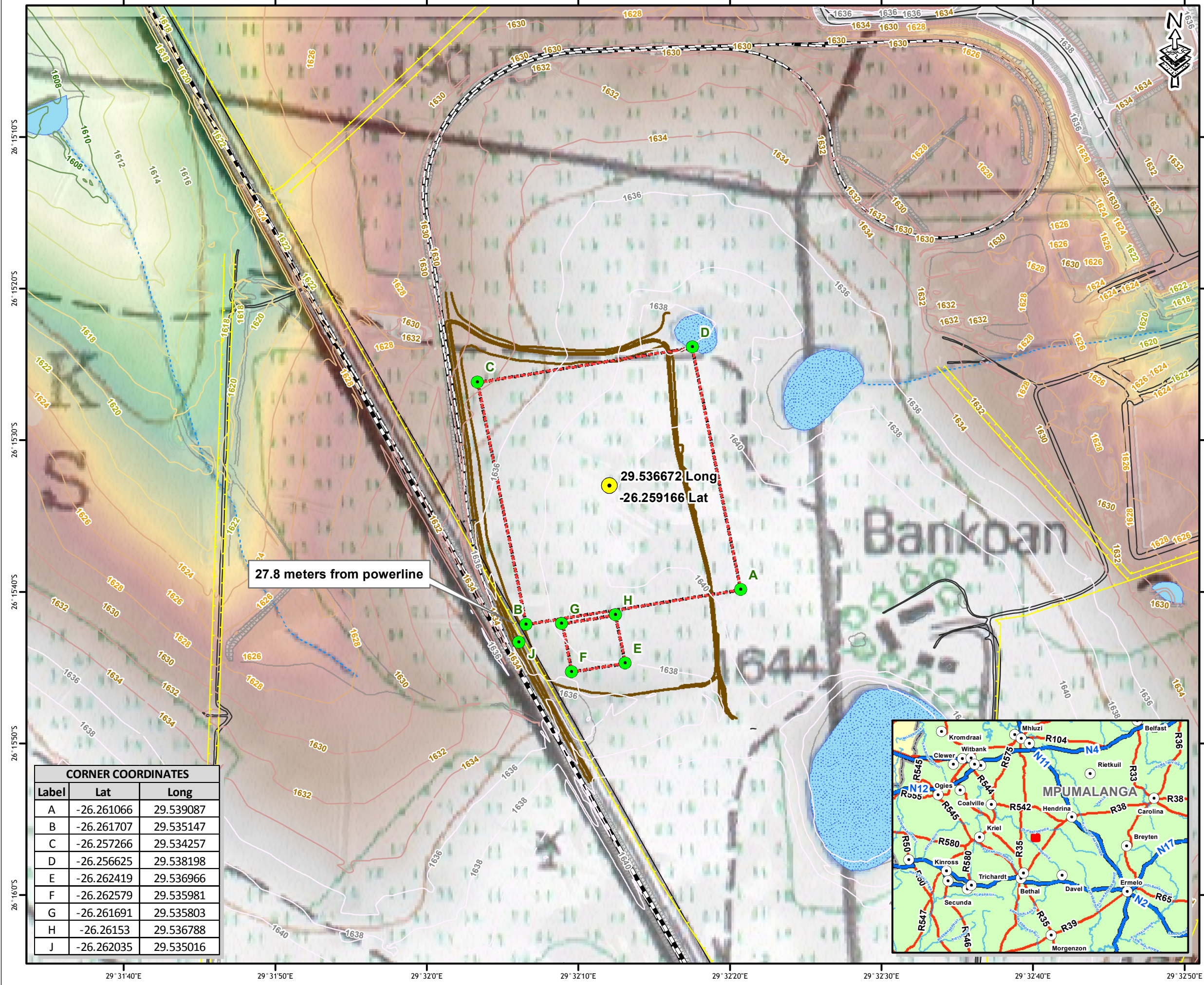


FORZANDO NORTH PHOTO VOLTAIC SOLAR FACILITY: SITE LAYOUT



LEGEND

- Photo Voltaic Solar Facility Centroid
- Corner Points
- ⚡ Powerlines
- 🚂 Railway

Road Network

- 🛣️ National Route
- 🛤️ Main Road
- 🛤️ Secondary Road
- 🛤️ Street

- 🔴 Photo Voltaic Solar Facility
- 🛤️ Access Roads
- 🌊 Dams
- 🌊 Pans

Rivers & Streams

- 🌊 Non-perennial
- 🌊 Perennial

Elevation (mamsl)

- 1640m
- 1608m

Data Sources: The Chief Directorate of Survey & Mapping
1:50 000 Topographical Series: 2629BC

FIGURE NO.: -

MAP NUMBER: 11-625-20120322-08

DRAWN BY: P.SNYDERS
GIS TECHNICIAN

REVIEWED BY: A. J. MAIN
GIS TECHNOLOGIST

DATUM: WGS84
PROJECTION: GEOGRAPHIC

DATE: 22 MARCH 2012

CLIENT: TOTAL COAL SA

PROJECT: FORZANDO NORTH PHOTO VOLTAIC FACILITY

SCALE: 1:7,500

0 75 150 300 Meters

GCS

63 Wessel Road Woodmead Tel: +27 (0) 11 803 5726
PO Box 2597 Rivonia 2128 Fax: +27 (0) 11 803 5745
South Africa E-mail: jhb@gcs-sa.biz

CORNER COORDINATES		
Label	Lat	Long
A	-26.261066	29.539087
B	-26.261707	29.535147
C	-26.257266	29.534257
D	-26.256625	29.538198
E	-26.262419	29.536966
F	-26.262579	29.535981
G	-26.261691	29.535803
H	-26.26153	29.536788
J	-26.262035	29.535016