

APPENDIX A

Maps



Legend:

-  Preferred
-  Alternative 2
-  Alternative 3

NOTE:

Both Alternative 2 and 3 is not seen as feasible & / or reasonable alternatives.

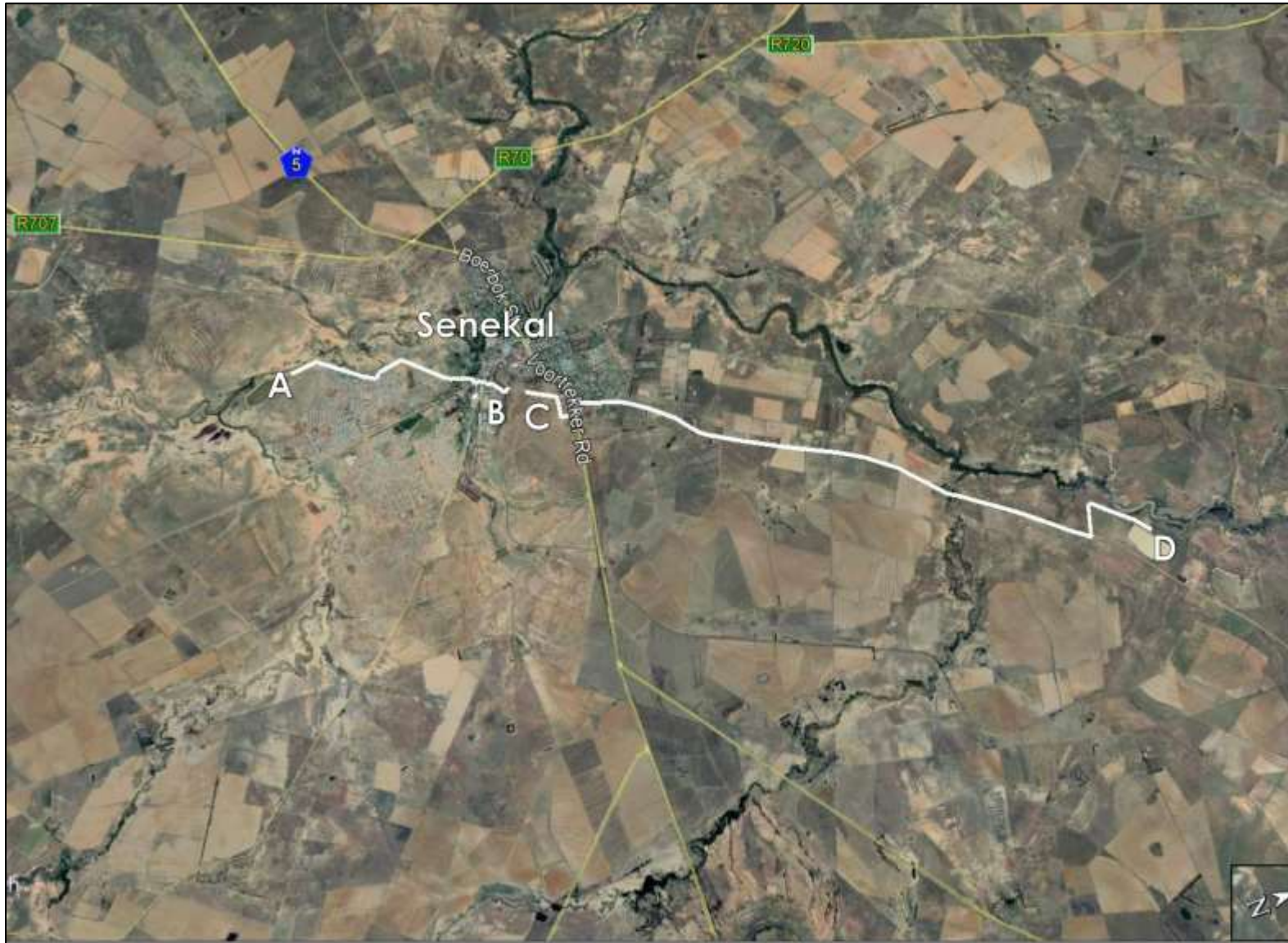
TYPE OF PLAN: LOCALITY PLAN

mda Town & Regional Planners,
Environmental &
Development Consultants
T: 051 447 1583 | P.O. Box 20298, Willows, Bloemfontein, 9320
F: 086 455 2568 | 9 Barnes Street, Westdene, Bloemfontein, 9301

PROJECT:
THE PROPOSED CONSTRUCTION OF A PIPELINE, SENEKAL

PROJECT BY:
SETSOTO LOCAL MUNICIPALITY

DRAWN BY:
HS



Legend:
 Proposed pipeline

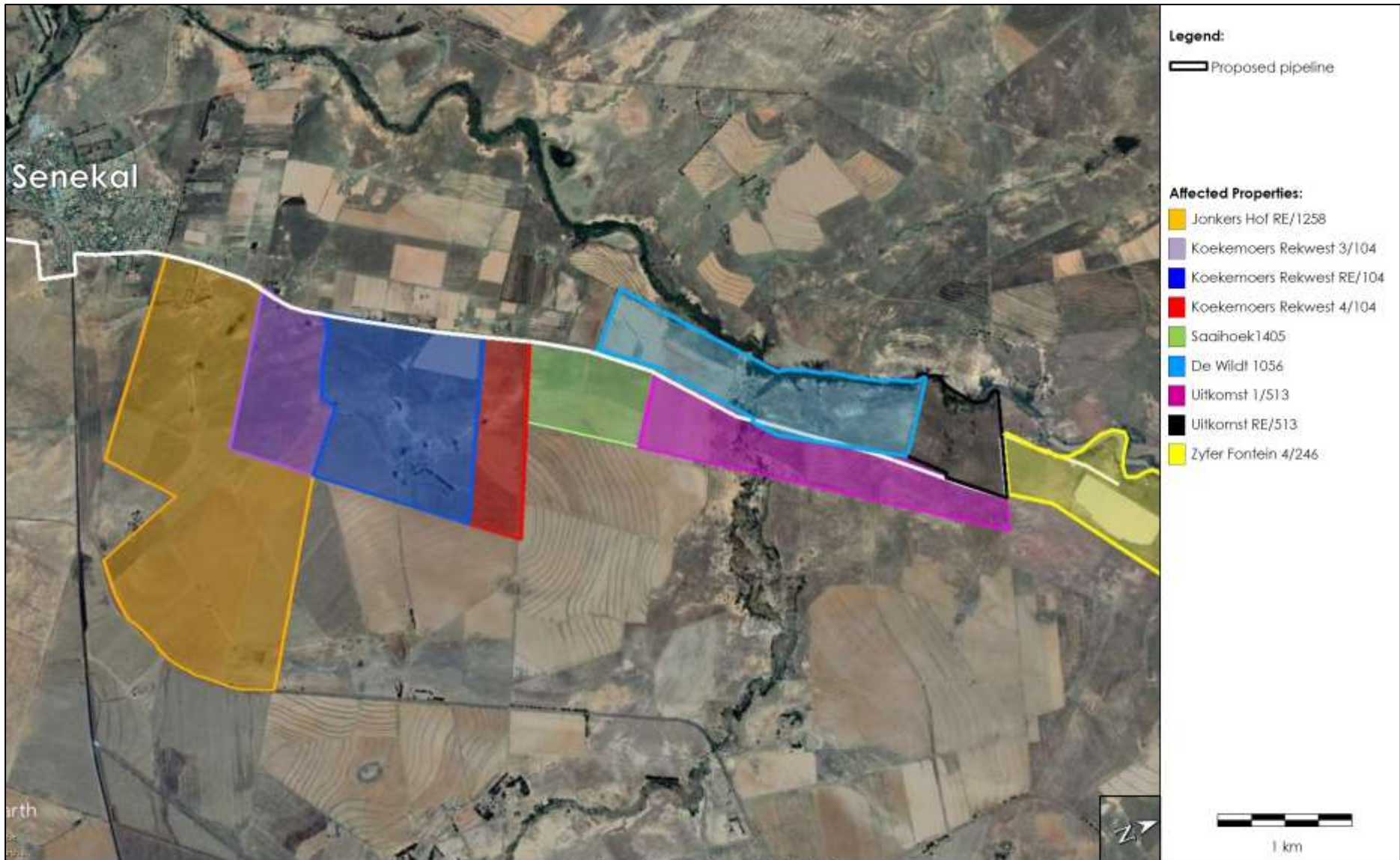
Coordinates:
 A: 28°21'10.99"S, 27°37'16.76"E
 B: 28°19'23.75"S; 27°37'41.84"E
 C: 28°19'14.25"S; 27°37'44.20"E
 D: 28°14'22.30"S; 27°39'37.48"E

TYPE OF PLAN: LOCALITY PLAN

mda Town & Regional Planners,
 Environmental &
 Development Consultants
 T: 051 447 1583 | P.O. Box 20298, Willows, Bloemfontein, 9320
 F: 086 455 2568 | 9 Barnes Street, Westdene, Bloemfontein, 9301

PROJECT:
 THE PROPOSED CONSTRUCTION OF A PIPELINE, SENEKAL
PROJECT BY:
 SETSOTO LOCAL MUNICIPALITY

DRAWN BY:
 HS



TYPE OF PLAN: LOCALITY PLAN

mda Town & Regional Planners,
Environmental &
Development Consultants
T: 051 447 1583 | P.O. Box 20298, Wilcoors, Bloemfontein, 9320
F: 086 455 2568 | 9 Barnes Street, Westdene, Bloemfontein, 9301

PROJECT:
THE PROPOSED CONSTRUCTION OF A PIPELINE, SENEKAL

PROJECT BY:
SETŠOTO LOCAL MUNICIPALITY

DRAWN BY:
HS