

Title: Figure 1:
Locality Map: Region

Property Description:
Erven 66, 757 & 423, Louisvaleweg; Plot 1037, Olyvenhoutsdrift Settlement, //Khara Hais Municipality, Northern Cape Province

LEGEND

 Study Area

MACROPLAN
Socio & Environmental
Spatial & Regional Planning

COBITTLN
Spatial Data
Land Information

P.O. Box 987
Upington
8800

T. 054 332 3642
F. 054 332 4283
macroplan@nwweb.co.za



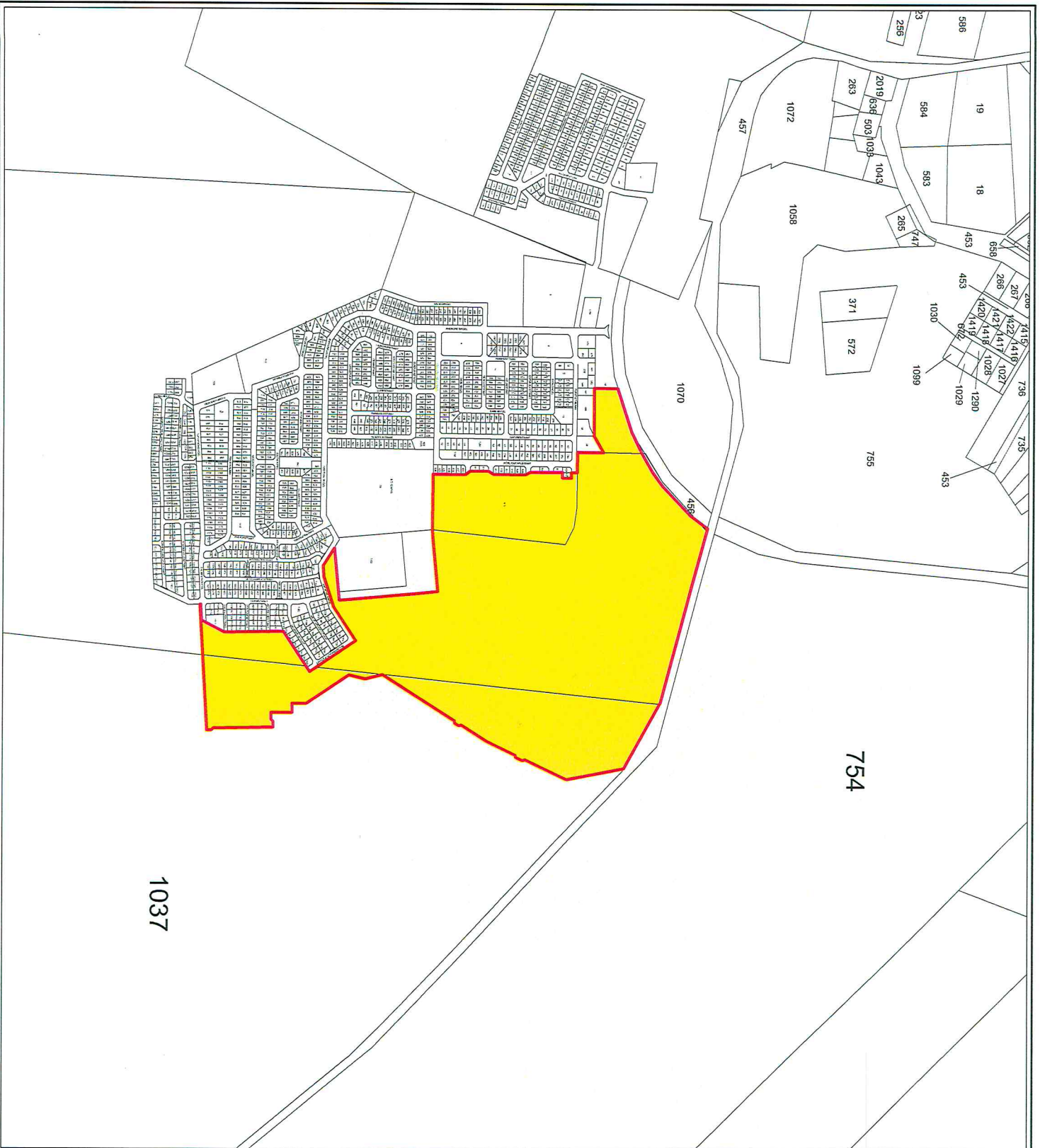
Reference: **KHAHOULOU/01**

Scale: 1: 75 000

Designed: J. Treurnich

Date: Nov. 2013

Drawn: J. Treurnich



Page: 11

Title: Figure 2: Locality Map: Local

Property Description: Erven 66, 757 & 423, Louisvaleweg; Plot 1037, Olyenhoutsdrift Settlement, //Khara Hais Municipality, Northern Cape Province

LEGEND
 Study Area

References:

MACROPLAN
 Town & Regional Planners
 P.O. Box 987
 Upington
 8800
 T. 054 332 3642
 F. 054 332 4283
 macroplan@mweb.co.za

GOETIEN
 Spatial Data
 Land Use Specialist

Reference: KHA/HOU/LOU/02

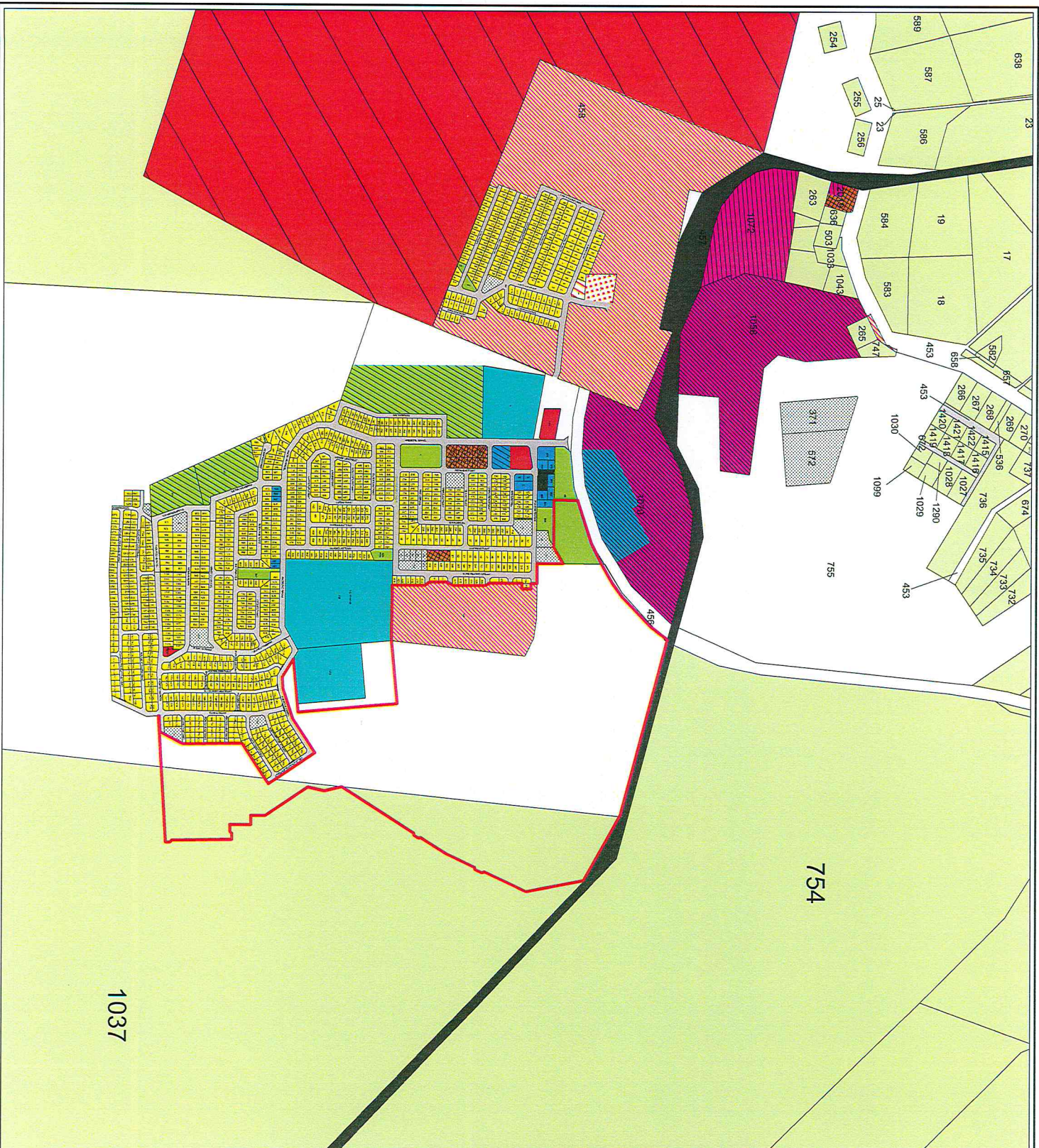
Scale:	1: 10 000	Designed:	J. Treurnich
Date:	Nov. 2013	Drawn:	J. Treurnich

Title: Figure 3:
Zoning Map: Excerpt

Property Description:
Erven 66, 757 & 423, Louisvaleweg; Plot 1037,
Olyenhoutsdrift Settlement, //Khara Hais
Municipality, Northern Cape Province

LEGEND

	Study Area		Ba.1: Public Park OR		D1.1 Service Trade Industry
	Ba.2: Landscaped Areas		D1.2 Service Station		D1.3 Concretes
	Ba.3: Parks and Open Spaces		D1.3 Carho		D1.1 Sports Fields and Infrastructure
	D1.1: Pitches of Inundation		D1.1: Pitches of Inundation		D1.1: Resorts and Tourism
	D1.2: Pitches of Non-pipe		D1.2: Pitches of Non-pipe		Ea.1: Agricultural Development Zone
	D1.3: Inundation		D1.3: Inundation		Ea.1: Industrial Development Zone
	D1.3: Inundation		D1.3: Inundation		Ea.1: Light Industry
	D1.3: Inundation		D1.3: Inundation		Ea.1: Medium Industry
	D1.3: Inundation		D1.3: Inundation		Ea.1: Heavy Industry
	D1.3: Inundation		D1.3: Inundation		Ea.1: Extended Industry
	D1.3: Inundation		D1.3: Inundation		Fa.1: Public Streets
	D1.3: Inundation		D1.3: Inundation		Fa.2: Public Parking
	D1.3: Inundation		D1.3: Inundation		Fa.1: Railway Lines
	D1.3: Inundation		D1.3: Inundation		Fa.1: Power Lines
	D1.3: Inundation		D1.3: Inundation		Ga.1: Unspecified Zone
	D1.3: Inundation		D1.3: Inundation		
	D1.3: Inundation		D1.3: Inundation		
	D1.3: Inundation		D1.3: Inundation		



1037

MACROPLAN
Urban & Regional Planning
CONSULTANTS
Special Design
Township Specialist

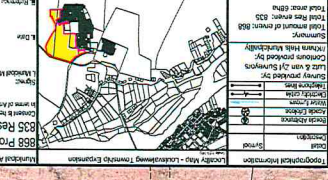
P.O. Box 987
Upington
8800
T. 054 332 3642
F. 054 332 4283
macroplan@mweb.co.za



Reference: KHA/HOU/OU/03

Scale:	1: 10 000	Designed:	J. Treurnich
Date:	Nov. 2013	Drawn:	J. Treurnich

Code	Description	Color
1	Residential Medium Density	Light Blue
2	Residential Medium Density	Light Blue
3	Residential Medium Density	Light Blue
4	Residential Medium Density	Light Blue
5	Residential Medium Density	Light Blue
6	Residential Medium Density	Light Blue
7	Residential Medium Density	Light Blue
8	Residential Medium Density	Light Blue
9	Residential Medium Density	Light Blue
10	Residential Medium Density	Light Blue
11	Residential Medium Density	Light Blue
12	Residential Medium Density	Light Blue
13	Residential Medium Density	Light Blue
14	Residential Medium Density	Light Blue
15	Residential Medium Density	Light Blue
16	Residential Medium Density	Light Blue
17	Residential Medium Density	Light Blue
18	Residential Medium Density	Light Blue
19	Residential Medium Density	Light Blue
20	Residential Medium Density	Light Blue
21	Residential Medium Density	Light Blue
22	Residential Medium Density	Light Blue
23	Residential Medium Density	Light Blue
24	Residential Medium Density	Light Blue
25	Residential Medium Density	Light Blue
26	Residential Medium Density	Light Blue
27	Residential Medium Density	Light Blue
28	Residential Medium Density	Light Blue
29	Residential Medium Density	Light Blue
30	Residential Medium Density	Light Blue
31	Residential Medium Density	Light Blue
32	Residential Medium Density	Light Blue
33	Residential Medium Density	Light Blue
34	Residential Medium Density	Light Blue
35	Residential Medium Density	Light Blue
36	Residential Medium Density	Light Blue
37	Residential Medium Density	Light Blue
38	Residential Medium Density	Light Blue
39	Residential Medium Density	Light Blue
40	Residential Medium Density	Light Blue
41	Residential Medium Density	Light Blue
42	Residential Medium Density	Light Blue
43	Residential Medium Density	Light Blue
44	Residential Medium Density	Light Blue
45	Residential Medium Density	Light Blue
46	Residential Medium Density	Light Blue
47	Residential Medium Density	Light Blue
48	Residential Medium Density	Light Blue
49	Residential Medium Density	Light Blue
50	Residential Medium Density	Light Blue
51	Residential Medium Density	Light Blue
52	Residential Medium Density	Light Blue
53	Residential Medium Density	Light Blue
54	Residential Medium Density	Light Blue
55	Residential Medium Density	Light Blue
56	Residential Medium Density	Light Blue
57	Residential Medium Density	Light Blue
58	Residential Medium Density	Light Blue
59	Residential Medium Density	Light Blue
60	Residential Medium Density	Light Blue
61	Residential Medium Density	Light Blue
62	Residential Medium Density	Light Blue
63	Residential Medium Density	Light Blue
64	Residential Medium Density	Light Blue
65	Residential Medium Density	Light Blue
66	Residential Medium Density	Light Blue
67	Residential Medium Density	Light Blue
68	Residential Medium Density	Light Blue
69	Residential Medium Density	Light Blue
70	Residential Medium Density	Light Blue
71	Residential Medium Density	Light Blue
72	Residential Medium Density	Light Blue
73	Residential Medium Density	Light Blue
74	Residential Medium Density	Light Blue
75	Residential Medium Density	Light Blue
76	Residential Medium Density	Light Blue
77	Residential Medium Density	Light Blue
78	Residential Medium Density	Light Blue
79	Residential Medium Density	Light Blue
80	Residential Medium Density	Light Blue
81	Residential Medium Density	Light Blue
82	Residential Medium Density	Light Blue
83	Residential Medium Density	Light Blue
84	Residential Medium Density	Light Blue
85	Residential Medium Density	Light Blue
86	Residential Medium Density	Light Blue
87	Residential Medium Density	Light Blue
88	Residential Medium Density	Light Blue
89	Residential Medium Density	Light Blue
90	Residential Medium Density	Light Blue
91	Residential Medium Density	Light Blue
92	Residential Medium Density	Light Blue
93	Residential Medium Density	Light Blue
94	Residential Medium Density	Light Blue
95	Residential Medium Density	Light Blue
96	Residential Medium Density	Light Blue
97	Residential Medium Density	Light Blue
98	Residential Medium Density	Light Blue
99	Residential Medium Density	Light Blue
100	Residential Medium Density	Light Blue



868 Properties created
835 Residential properties created

Local Municipality: Khara Haia
Municipality: Khara Haia
P.O. Box 987
Limpopo
0804

