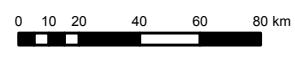


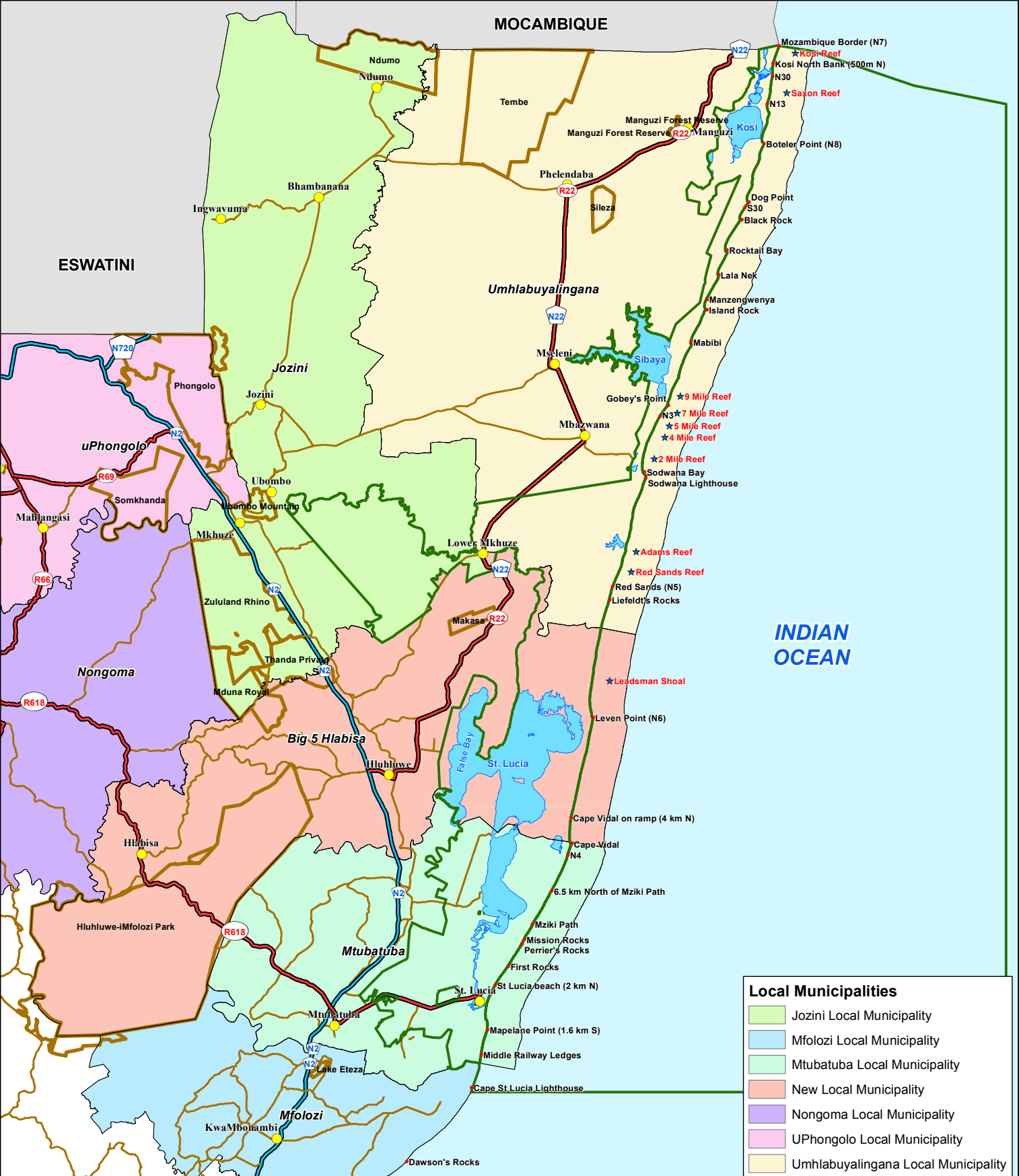
- Main Towns
 - National Roads
 - iSimangaliso Wetland Park Boundary
 - Local Municipalities
 - Provincial Boundaries
- KZN District Municipalities**
- Amajuba
 - Harry Gwala
 - King Cetshwayo
 - Ugu
 - Umgungundlovu
 - Umkhanyakude
 - Umzinyathi
 - Uthukela
 - Zululand
 - eThekweni
 - iLembe



Map1: iSimangaliso Wetland Park: Locality Map

ISIMANGALISO WETLAND PARK INTEGRATED MANAGEMENT PLAN (2022 - 2031)

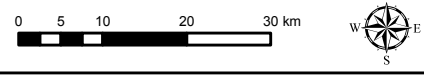
Copyright - iSimangaliso Wetland Park Authority (2021)



Local Municipalities

- Jozini Local Municipality
- Mfolozi Local Municipality
- Mtubatuba Local Municipality
- New Local Municipality
- Nongoma Local Municipality
- UPhongolo Local Municipality
- Umhlabuyalingana Local Municipality

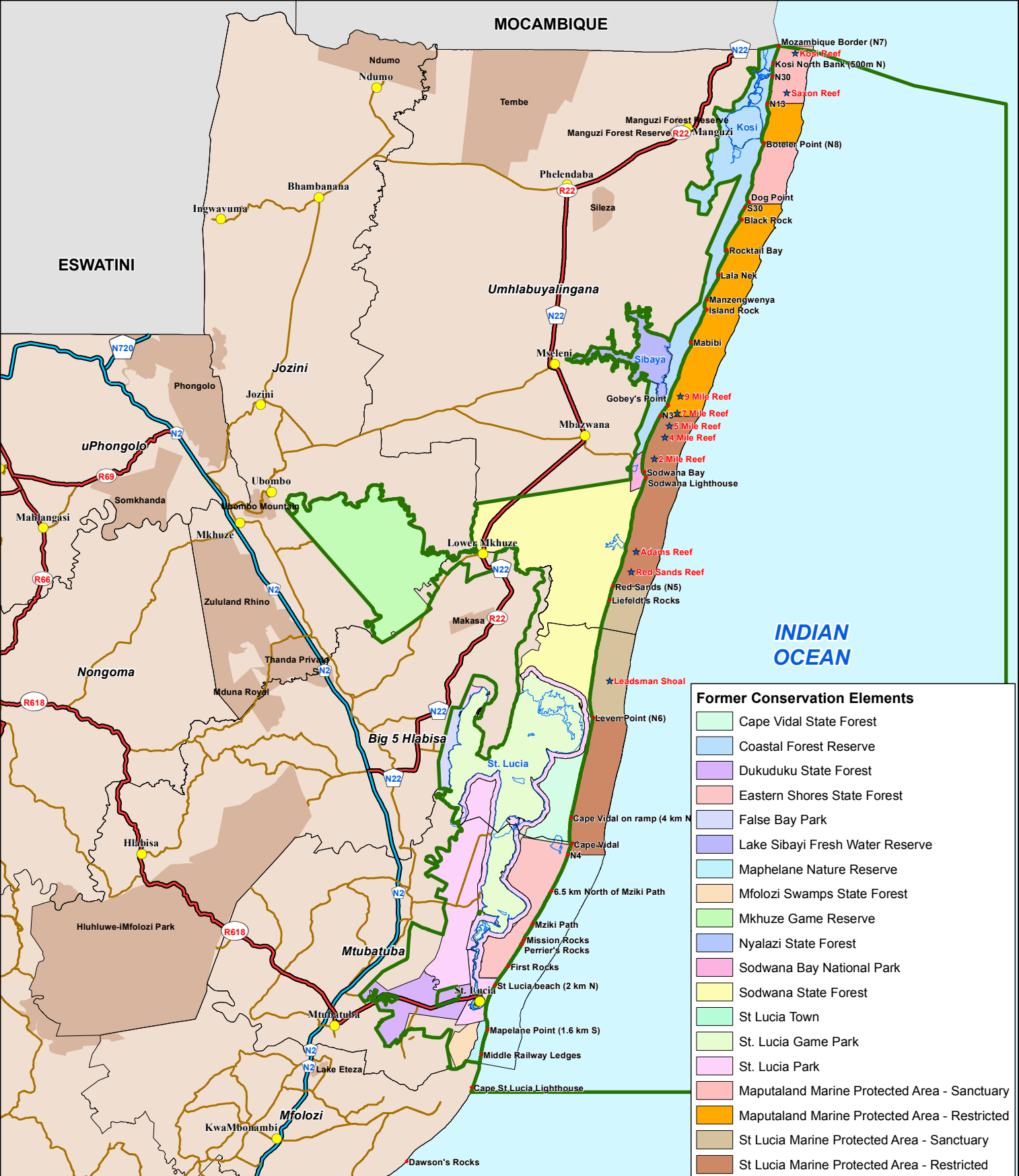
- Towns/Settlements
- Reefs
- iSimangaliso Wetland Park Boundary
- Lakes
- Major Routes
- National Roads
- Provincial Roads
- Local Municipalities
- External Conservation Areas



Map 2: iSimangaliso Wetland Park: Local Context

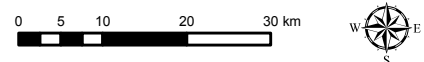
ISIMANGALISO WETLAND PARK INTEGRATED MANAGEMENT PLAN (2022 - 2031)

Copyright - iSimangaliso Wetland Park Authority (2021)



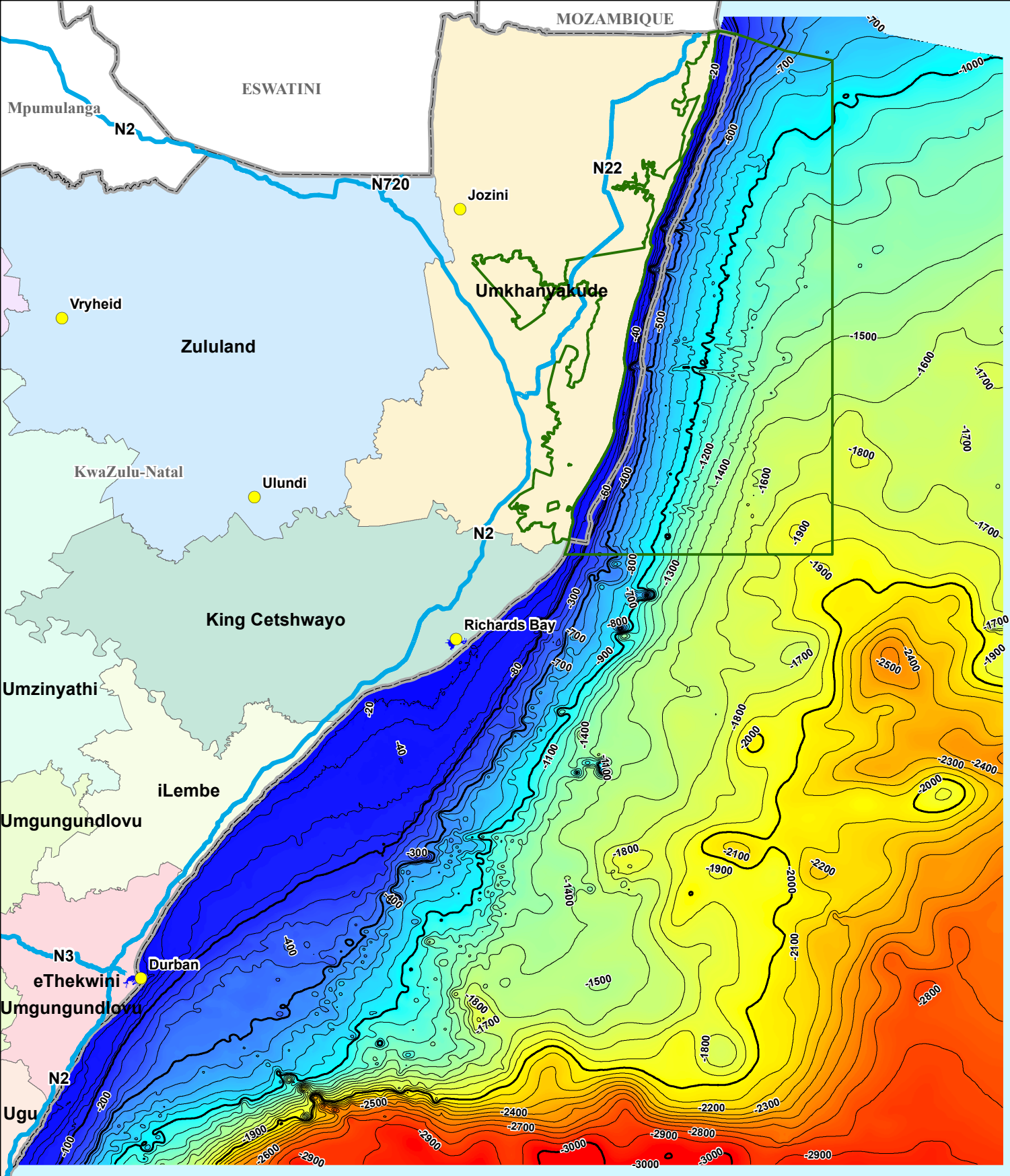
- Towns/Settlements
- ★ Reefs
- iSimangaliso Wetland Park Boundary
- Lakes
- Major Routes
- National Roads
- Provincial Roads
- Local Municipalities
- External Conservation Areas

- Former Conservation Elements**
- Cape Vidal State Forest
 - Coastal Forest Reserve
 - Dukuduku State Forest
 - Eastern Shores State Forest
 - False Bay Park
 - Lake Sibayi Fresh Water Reserve
 - Maphelane Nature Reserve
 - Mfolozi Swamps State Forest
 - Mkhuze Game Reserve
 - Nyalazi State Forest
 - Sodwana Bay National Park
 - Sodwana State Forest
 - St Lucia Town
 - St. Lucia Game Park
 - St. Lucia Park
 - Maputland Marine Protected Area - Sanctuary
 - Maputland Marine Protected Area - Restricted
 - St Lucia Marine Protected Area - Sanctuary
 - St Lucia Marine Protected Area - Restricted

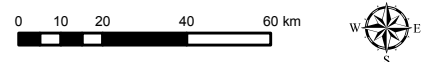
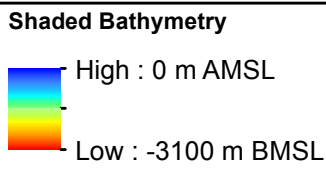


Map 3: iSimangaliso Wetland Park: Park Components

ISIMANGALISO WETLAND PARK INTEGRATED MANAGEMENT PLAN (2022 - 2031)



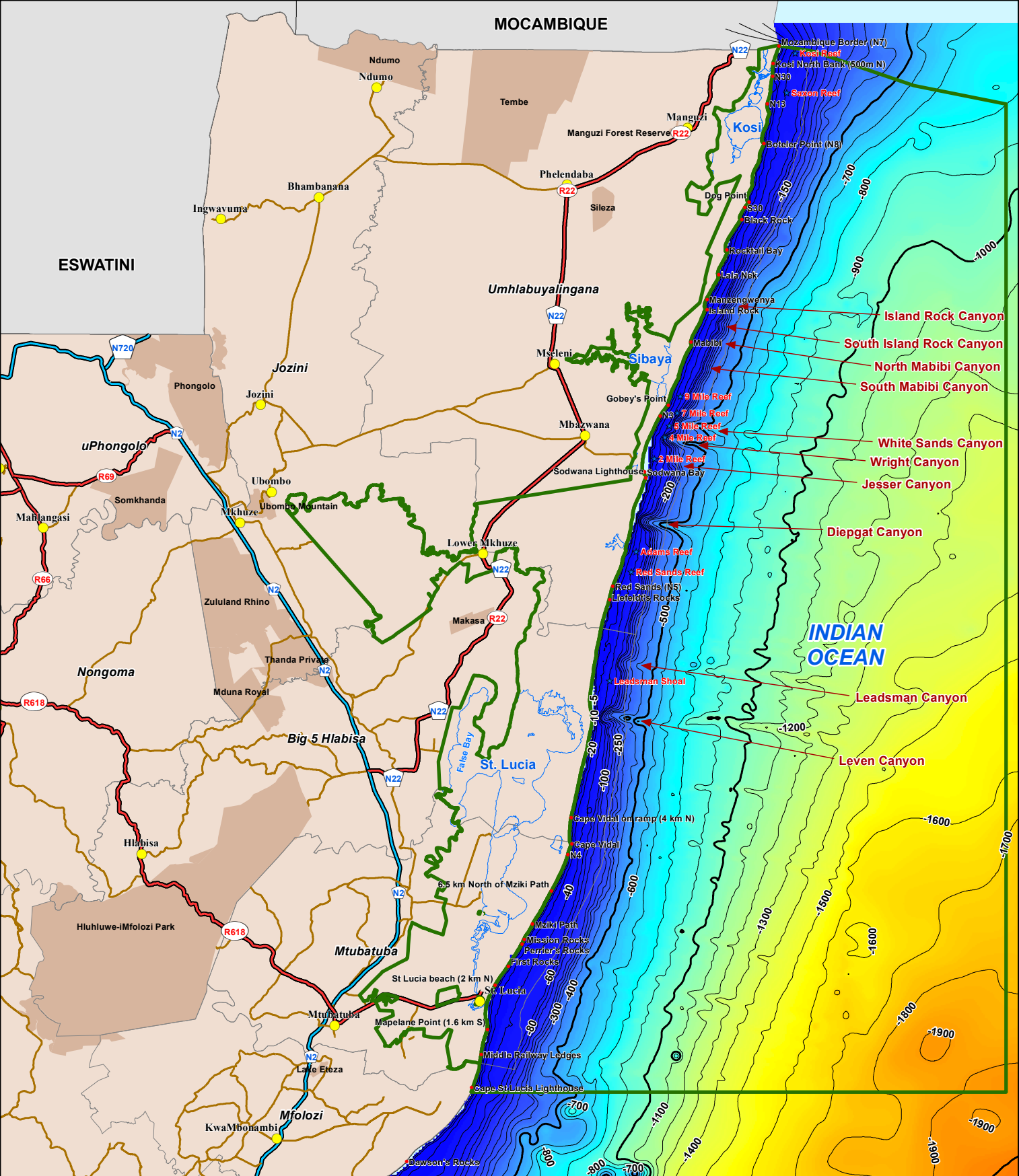
- Main Towns
- National Roads
- iSimangaliso Wetland Park Boundary
- Provincial Boundaries
- Bathymetry Isolines



Map 4A: iSimangaliso Wetland Park: Marine Bathymetry

ISIMANGALISO WETLAND PARK INTEGRATED MANAGEMENT PLAN (2022 - 2031)

Copyright - iSimangaliso Wetland Park Authority (2021)

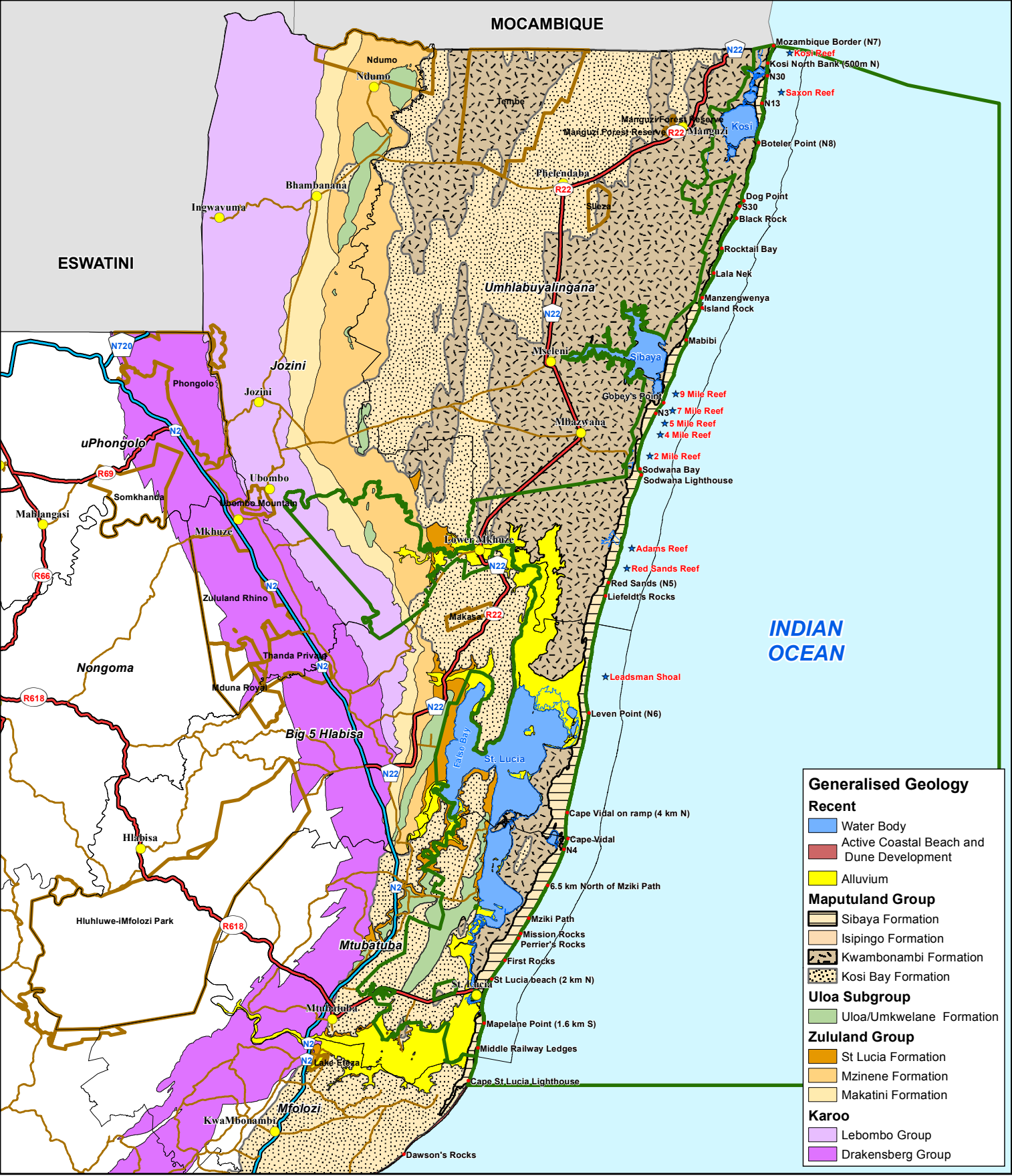


Towns/Settlements	Reefs	Shaded Bathymetry High : -1 metres BMSL Low : -2535 metres BMSL	0 5 10 20 30 km	
iSimangaliso Wetland Park Boundary	Lakes			
Major Routes	Bathymetry Isolines			
National Roads				
Provincial Roads				
Local Municipalities				
External Conservation Areas				

Map 4B: iSimangaliso Wetland Park: Marine Bathymetry

ISIMANGALISO WETLAND PARK INTEGRATED MANAGEMENT PLAN (2022 - 2031)

Copyright - iSimangaliso Wetland Park Authority (2021)



Generalised Geology

Recent

- Water Body
- Active Coastal Beach and Dune Development
- Alluvium

Maputland Group

- Sibaya Formation
- Isipingo Formation
- Kwambonambi Formation
- Kosi Bay Formation

Uloa Subgroup

- Uloa/Umkwelane Formation

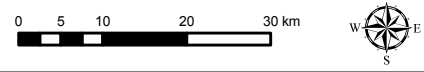
Zululand Group

- St Lucia Formation
- Mzinene Formation
- Makatini Formation

Karoo

- Lebombo Group
- Drakensberg Group

- Towns/Settlements
- External Conservation Areas
- iSimangaliso Wetland Park Boundary
- Reefs
- Major Routes
- Lakes
- National Roads
- Provincial Roads
- Local Municipalities

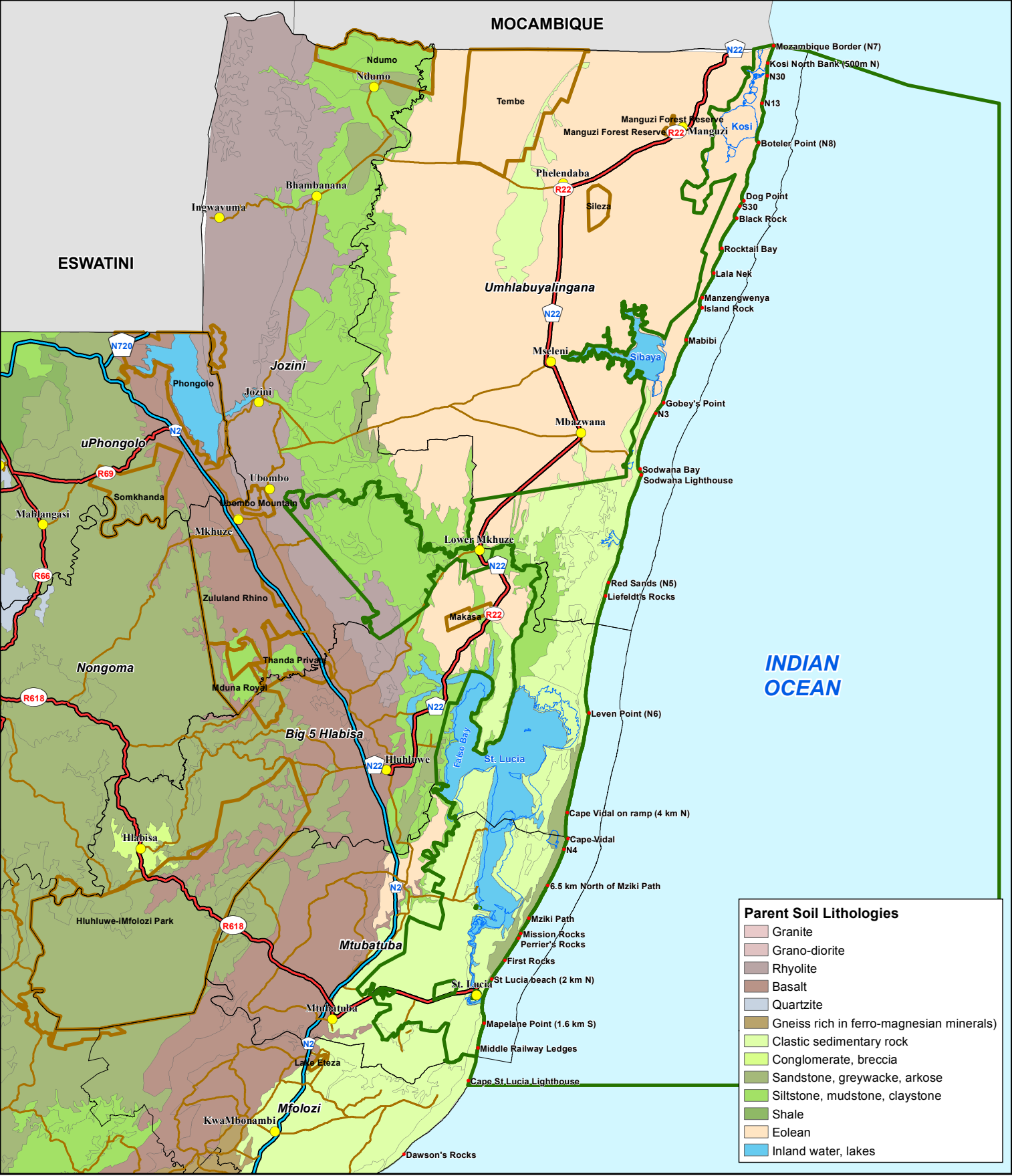


Map 5: iSimangaliso Wetland Park: Generalised Geology

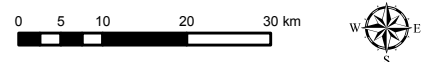
ISIMANGALISO WETLAND PARK INTEGRATED MANAGEMENT PLAN (2022 - 2031)

Map compiled from (SACS, 1980; Botha, 2018)

Copyright - iSimangaliso Wetland Park Authority (2021)

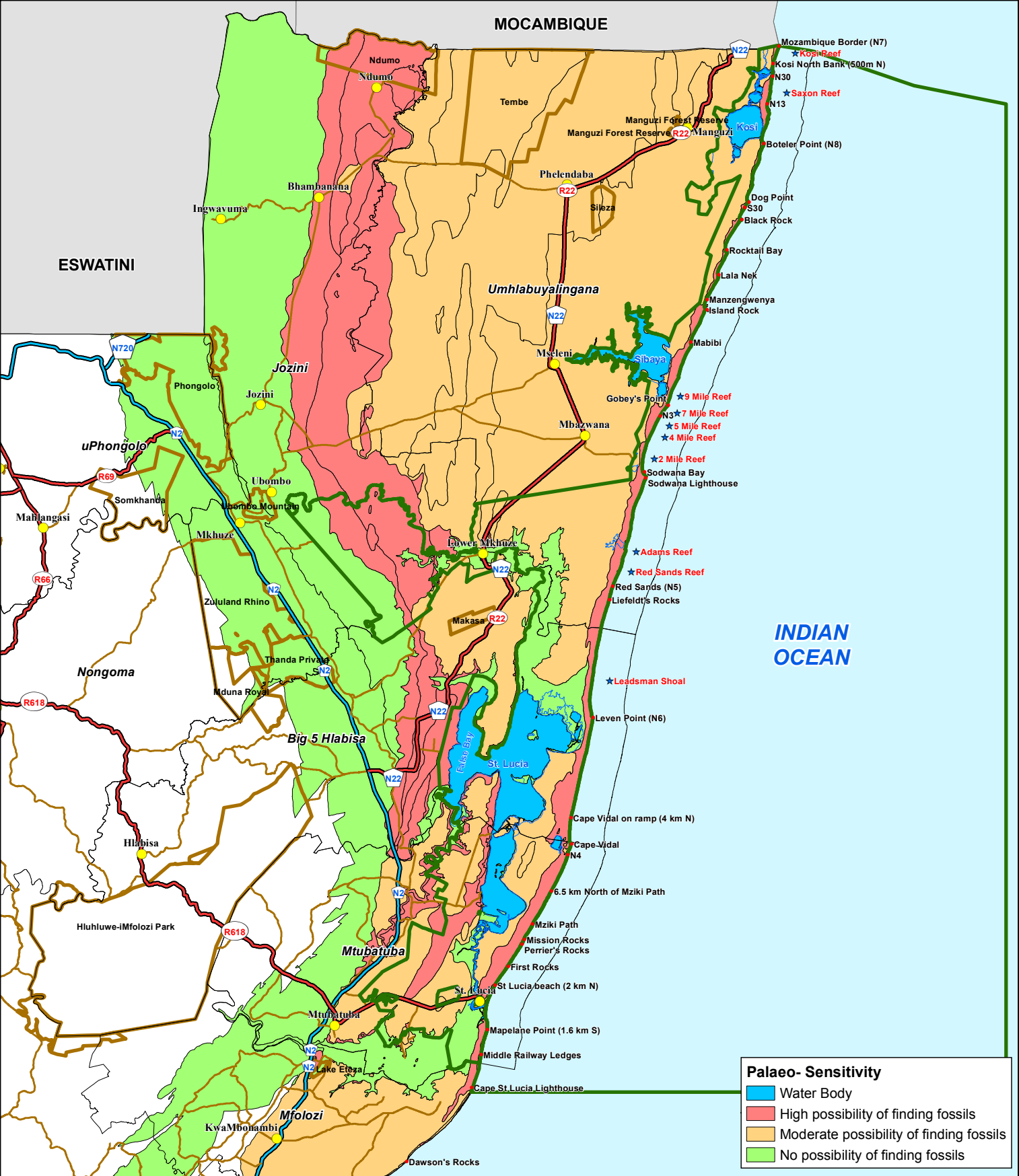


- iSimangaliso Wetland Park Boundary
- Major Routes
- National Roads
- Provincial Roads
- Local Municipalities
- External Conservation Areas
- Lakes



**Map 6: iSimangaliso Wetland Park:
Parent Soil Lithologies (Soter)**

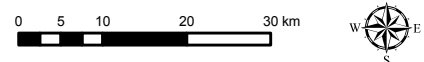
**ISIMANGALISO WETLAND PARK
INTEGRATED MANAGEMENT PLAN
(2022 - 2031)**



Palaeo- Sensitivity

- Water Body
- High possibility of finding fossils
- Moderate possibility of finding fossils
- No possibility of finding fossils

- Towns/Settlements
- External Conservation Areas
- iSimangaliso Wetland Park Boundary
- Reefs
- Major Routes
- Lakes
- National Roads
- Provincial Roads
- Local Municipalities

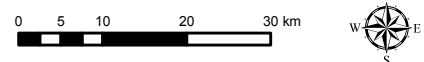


Map 7: iSimangaliso Wetland Park: Palaeontology Sensitivity

Base geology compiled from (SACS, 1980; Botha, 2018).
 Palaeo-sensitivity modified after Groenewald (2012).



- Towns/Settlements
 - Lakes
 - iSimangaliso Wetland Park Boundary
 - Major Routes
 - National Roads
 - Provincial Roads
 - Local Municipalities
 - External Conservation Areas
- Shaded Topography**
- High : 749 m AMSL
 - Low : 0 m AMSL



**Map 8: iSimangaliso Wetland Park:
Shaded Topography**

**ISIMANGALISO WETLAND PARK
INTEGRATED MANAGEMENT PLAN
(2022 - 2031)**

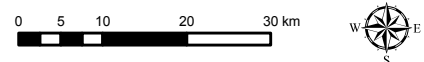
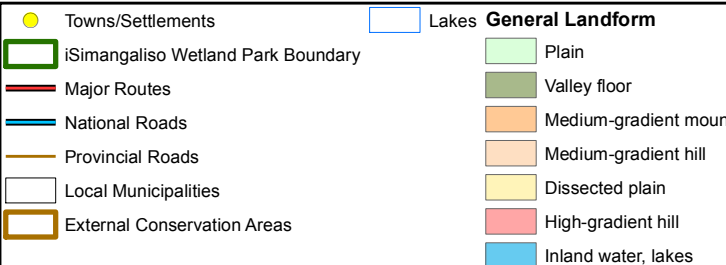
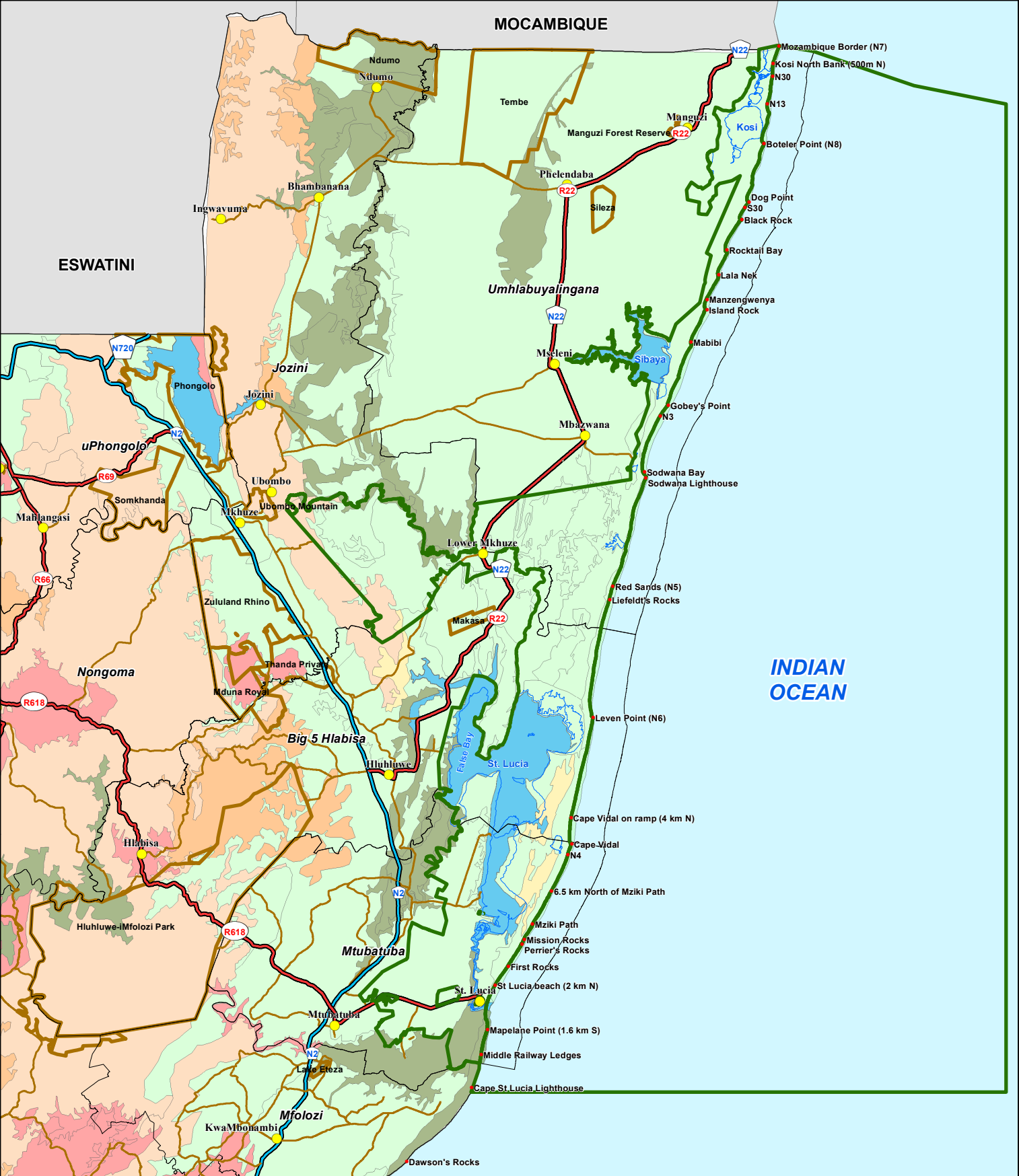
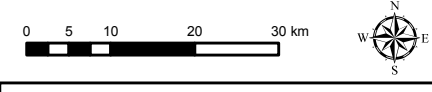
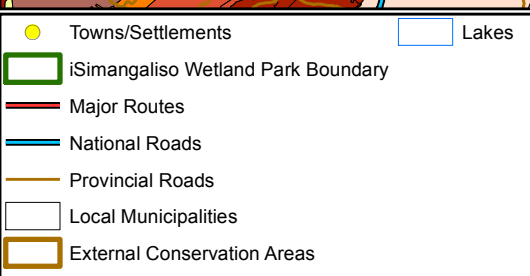
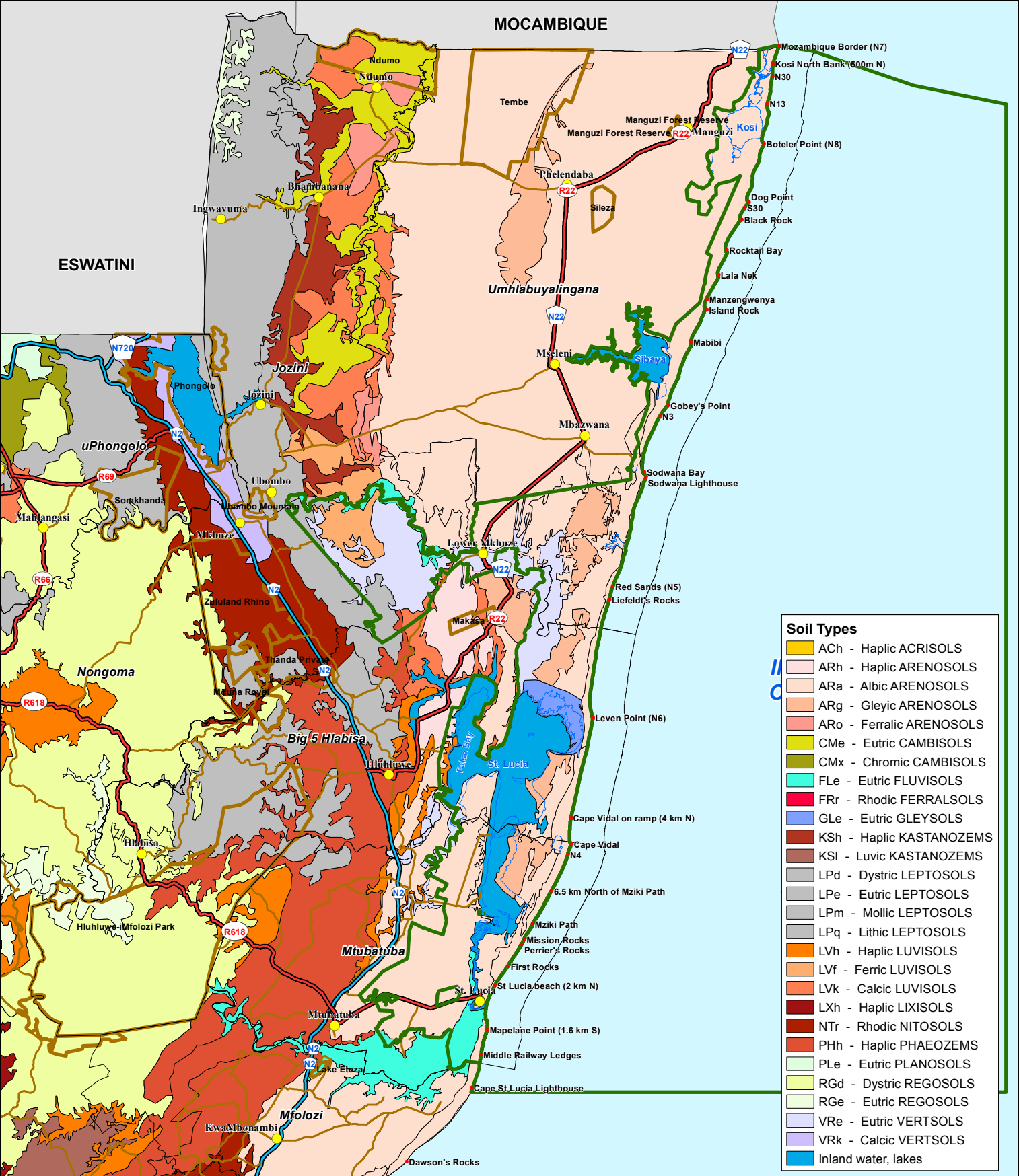


Figure 9: iSimangaliso Wetland Park: General Landform (Soter)



Map 10: iSimangaliso Wetland Park: Soil Types (Soter)

ISIMANGALISO WETLAND PARK INTEGRATED MANAGEMENT PLAN (2022 - 2031)

Copyright - iSimangaliso Wetland Park Authority (2021)