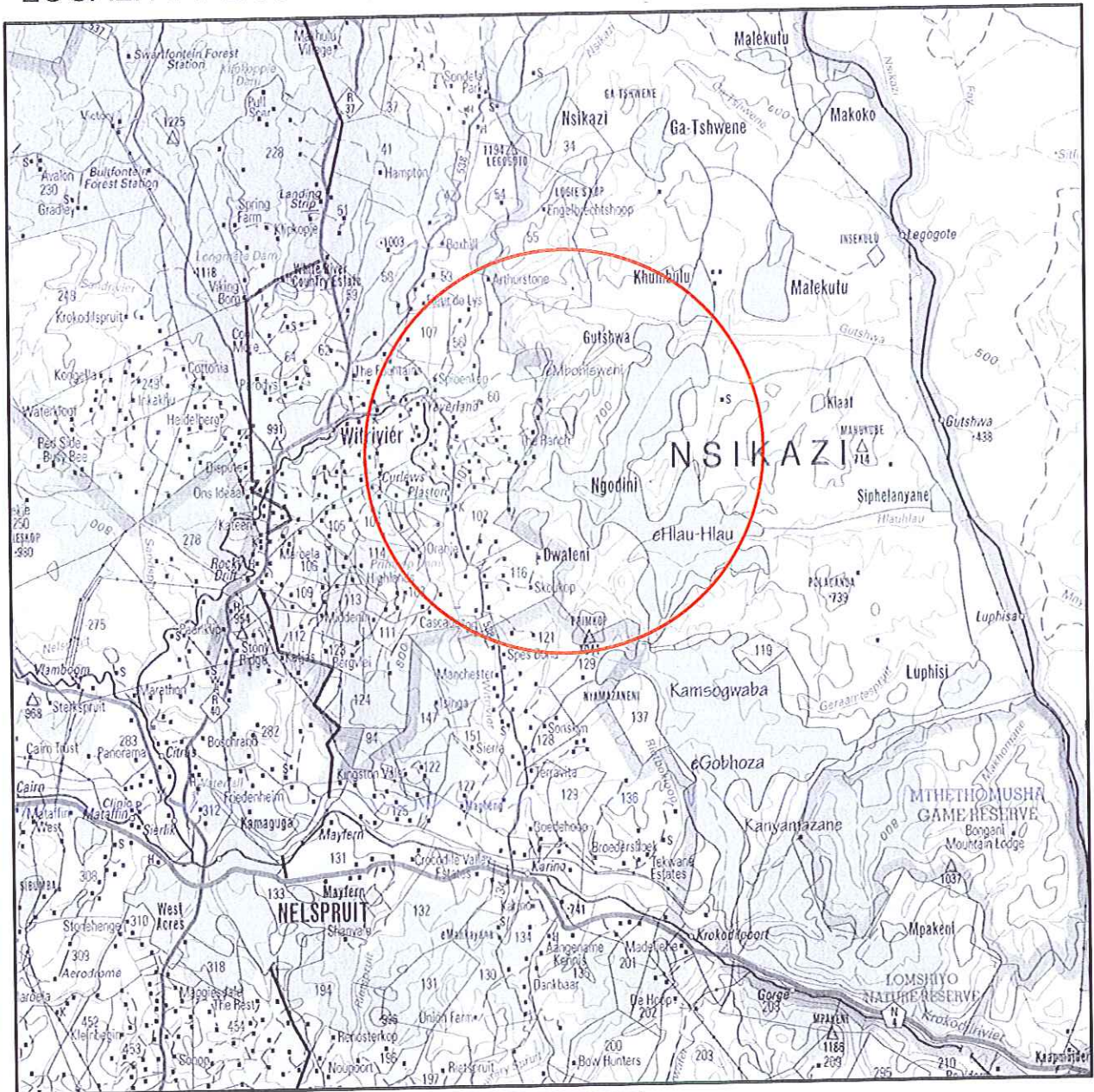


LOCALITY PLAN



Disclaimer
Geographic Mapping Nelspruit
are not responsible for any errors
in external datasets displayed on this map.

SCALE 1:250 000

Information from official maps reproduced under Government printers copyright authority No. 4138 of 28/03/1969

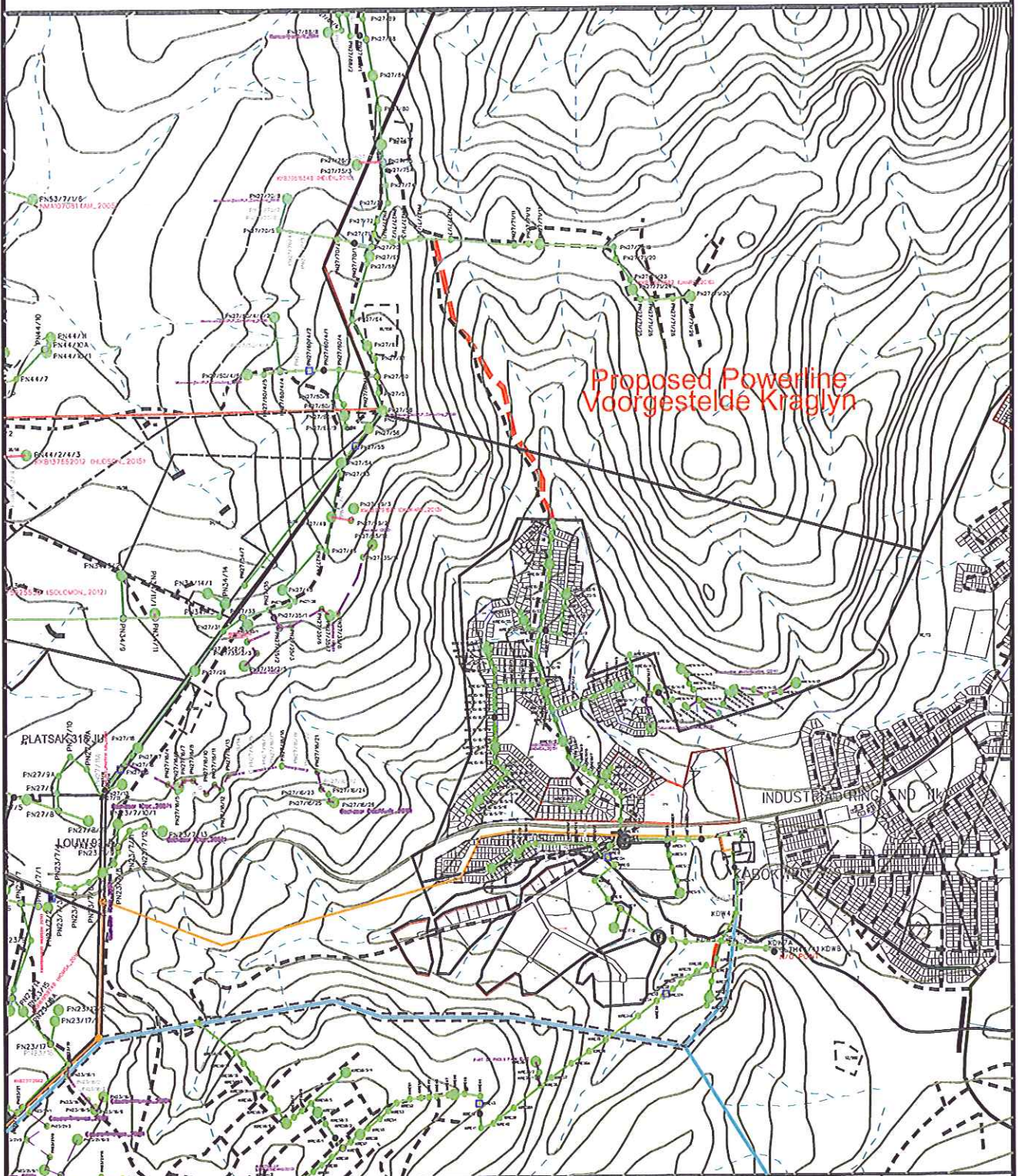


Mpumalanga Operating Unit
Land Development

P.O.Box 1567
Nelspruit 1200
Tel 013 -755 9617
Fax 013 -755 9660

Feeder: Kabokweni Ring End 11kV & Ngodini 11kV	Surveyor: Petros Mandlazi
Customer: ESKOM	Geographic mapping: Annelize van Niekerk
Project No: KIRE12	Date compiled: 09/03/2017
Length of line: 1.633m	Revised by:
Portion of map no: 2530	Revision date:
Page: 1 of 6	

DASHED RED LINE INDICATES POWERLINE ROUTE



Route plan
Mpumalanga Operating Unit

Disclaimer
Geographic Mapping Nelspruit
are not responsible for any errors
in external datasets displayed on this map.
The following external datasets were used:
Cadastral
Topographical

Feeder:	Kabokweni Industrial Ring End 11kV & Ngodini 11kV
Customer:	ESKOM
Project No:	KIRE12
CNC Area:	Kabokweni

Portion of map no:
2531ACN
Scale: 1:25 000

