

BACKGROUND INFORMATION DOCUMENT

NOTICE FOR A BASIC ENVIRONMENTAL ASSESSMENT FOR THE PROPOSED UPGRADE & CONSTRUCTION INYANDA ROAD & A COURSEWAY IN WARD 21, EMONDLO, WITHIN ABAQULUSI LOCAL MUNICIPALITY

REF- DC26/0020/2012

MARCH 2013



WHAT DOES THIS DOCUMENT TELL YOU?

This document aims to provide you, as an Interested and Affected Party (I&AP), with background information regarding Abaqulusi Local Municipality's (LM) intent to upgrade and construct the Nyanda road and courseway in the above mentioned municipalities. The document also provides information regarding the Basic assessment (BA) processes to be undertaken. Furthermore, the document advises how you can become involved in the project, receive information and/or raise issues, which may concern and/or be of interest to you. The sharing of information forms the basis of the public participation process and offers you the opportunity to become actively involved in the projects from the outset. Public participation plays an important role in the undertaking of the BA as input from I&APs ensures that all potential issues are considered within the studies.

WHAT DOES THE PROJECT ENTAIL?

Abaqulusi Local Municipality proposes to upgrade the 2 130m long Nyanda road and construct a low level bridge (Course Way) where it crosses a stream, in order to provide easy access to the rural area of ward 21 situated within in eMondlo. The course way will be constructed to create and allow pedestrians and motorists to gain access efficiently. The course way will provide efficient access to the community & will enhance accessibility of public services to the local people i.e. children whose school's are situated across the River will not be restricted when the River gets full.

The proposed upgrade and construct of the Nyanda road and courseway will include:

- Clear and grub
- Removal of topsoil
- Excavation of storm water pipe trenches.
- Construction of storm water pipe (including the extension of existing storm water pipes)
- Storm water drainage pipe bedding
- Stone pitching and gabions.
- Earthworks – cut, fill, stockpile, and dispose etc.
- Roadbed preparation, ripping and re-compacting.

- Road pavement layers – sub base, importation of G9.
- Road pavement layers – sub base, importation of G7.
- Road pavement layers – base/wearing course, importation of G5.
- Relocation of existing fence and services (water, electricity, etc.)

WHAT ARE THE POTENTIAL ENVIRONMENTAL IMPACTS ASSOCIATED WITH THE PROPOSED PROJECT?

A number of potential environmental impacts associated with the project have been identified. The Environmental Impact Assessment BA phases will aim to achieve the following:

- to provide an overall assessment of the social and biophysical environments of the affected area by the proposed construction of the project;
- to identify and recommend appropriate mitigation measures for potentially significant environmental impacts; and
- To undertake a fully inclusive public participation process to ensure that I&AP issues and concerns are recorded and commented on.

WHY ARE ENVIRONMENTAL STUDIES NEEDED?

In terms of the Environmental Impact Assessment (EIA) Regulations Government Notice. R. 544 of 2010 published in terms of Section 24(5) read with Section 44 of the National Environmental Management Act (NEMA), 1998 (Act No 107 of 1998) the proposed upgrade and construct the Nyanda road and course way requires a basic assessment process to be conducted as the activity will include construction of a causeway that crosses a stream. The proposed project as it includes activities listed under Regulation 544 of the NEMA EIA regulations. Activities under these listings may have a detrimental effect on the environment; hence a BA process needs to be undertaken.

Icebo Environmental has been appointed, as an independent Environmental Assessment Practitioner (EAP), to undertake environmental studies to identify and assess all potential

environmental impacts associated with the proposed project. As part of these environmental studies, all I&APs will be actively involved through a public participation process.

HOW CAN YOU GET INVOLVED?

If you consider yourself an I&AP for this proposed project, we urge you to make use of the opportunities created by the public participation process to become involved in the process and provide comment, or raise those issues and concerns which affect and/or interest you, or about which you would like more information. Your input into this process forms a key part of the environmental studies and we would like to hear from you to obtain your views on the proposed project.


Comments and Queries on the Project can be directed to:

Monica Nomcebo Shange


(Senior Environmental Consultant)

 1st floor Reid Raetzer house, 21 Riverhorse

Close, Riverhorse Valley, Durban

 Phone: 0793073282

 E-mail: shangen@iceboenviro.co.za

 Fax: 0865498430;


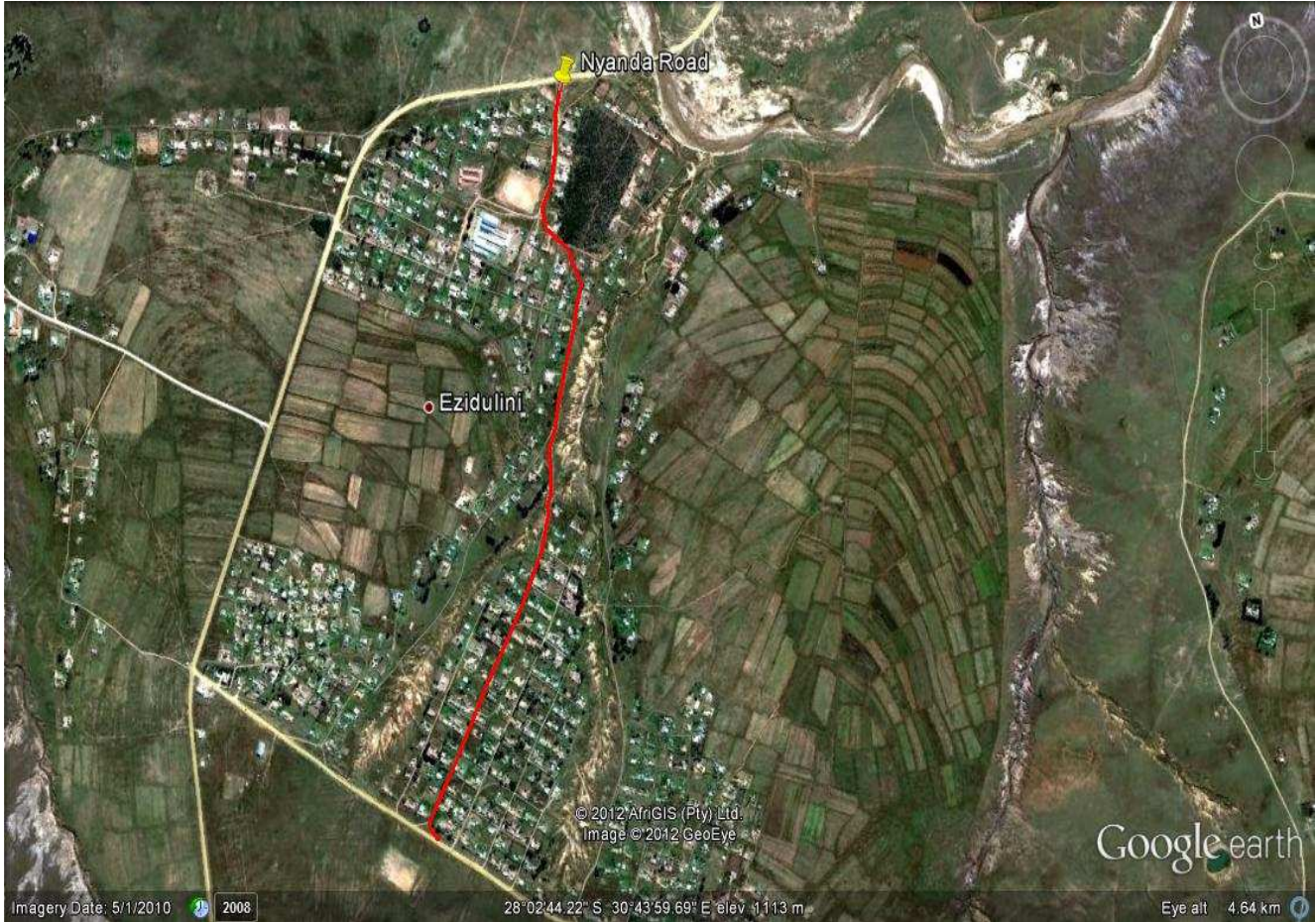
 Phone: +27315125040/ext22

Figure1-1: Google image showing the location of Nyanda Road



Filename: nyanda eng BID Ver 1
Directory: C:\Users\USER\Documents\laptop data sau\abaqulusi roads
Template: C:\Users\USER\AppData\Roaming\Microsoft\Templates\Normal.
dotm
Title: ENVIRONMENTAL IMPACT ASSESSMENT PROCESS
Subject:
Author: ashleas
Keywords:
Comments:
Creation Date: 3/11/2013 7:22:00 AM
Change Number: 5
Last Saved On: 3/12/2013 7:24:00 AM
Last Saved By: USER
Total Editing Time: 17 Minutes
Last Printed On: 3/12/2013 7:31:00 AM
As of Last Complete Printing
Number of Pages: 3
Number of Words: 754 (approx.)
Number of Characters: 4,301 (approx.)