

Umlando: Archaeological Surveys & Heritage Management

PO Box 102532, Meerensee, KwaZulu-Natal, 3901
Cell: 0836585362 / 0723481327
Phone/fax 035-7531785; fax: 0865445631
email: umlando@gmail.com

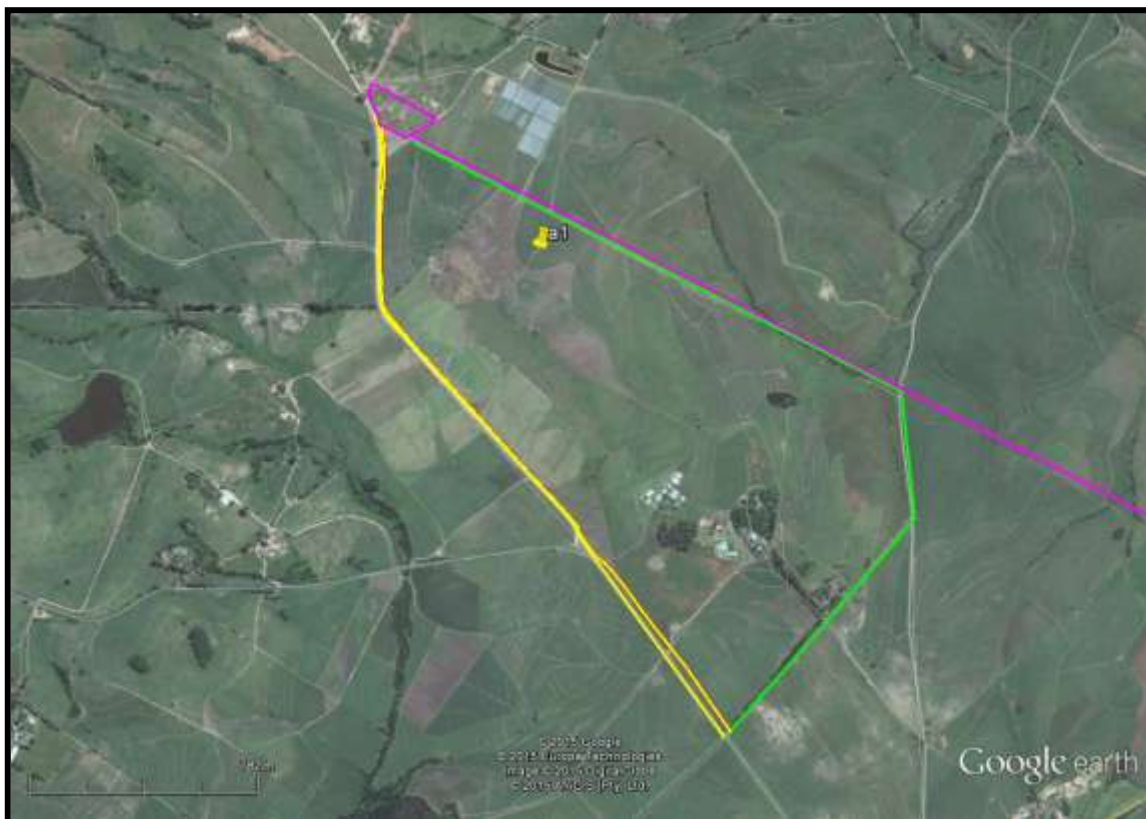


OFFTAKE 13B REALIGNMENT

24 May 2015

The Off take 13B pipeline was surveyed in February 2015. Since then it has been realigned to follow an existing dirt road. Figure 1 shows the original line (yellow) and the new line (green), while the pink line shows Off take 13 a. I am satisfied that no new archaeological sites will be affected as most of the new line was surveyed as part of Off take 13 a, and the new section was driven.. The PIA comments and mitigation remains the same.

FIG. 1: OLD AND NEW PIPELINE ROUTE OPTION FOR OFFTAKE 13B



Yours sincerely

A handwritten signature in black ink, appearing to read 'Gavin Anderson'. The signature is stylized and somewhat cursive.

Gavin Anderson

Winter Night Investments cc (2003/099644/23) trading as Umlando:
Archaeological Surveys & Heritage Management
VAT Reg No.: 4090215221