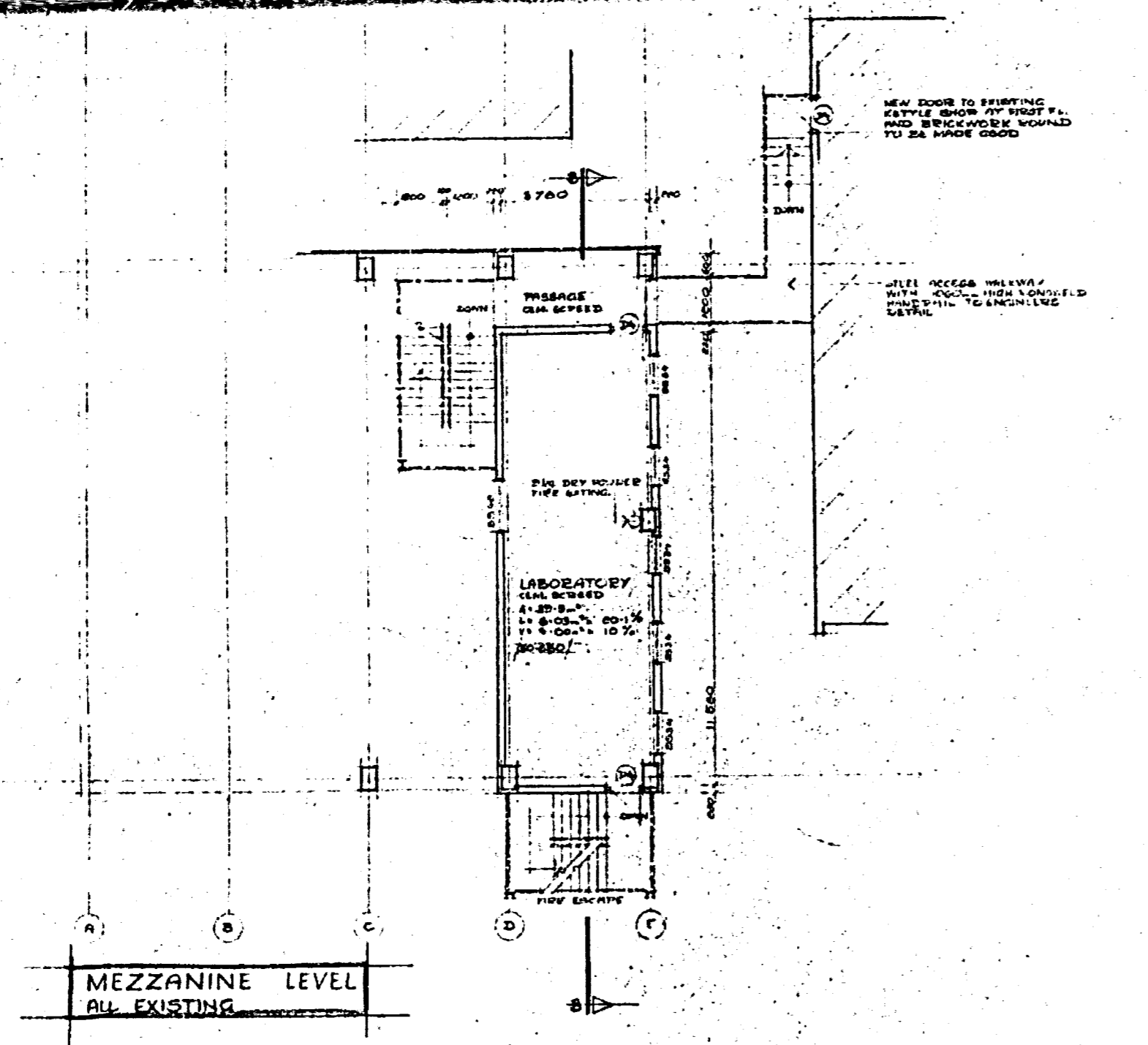


SHEET 2/3 COPY 2
 CITY OF DURBAN
 PLAN No. 149/75
 APPROVED
 D. MACLEOD DATE 15 OCT 1975
 CITY ENGINEER FOR JGA

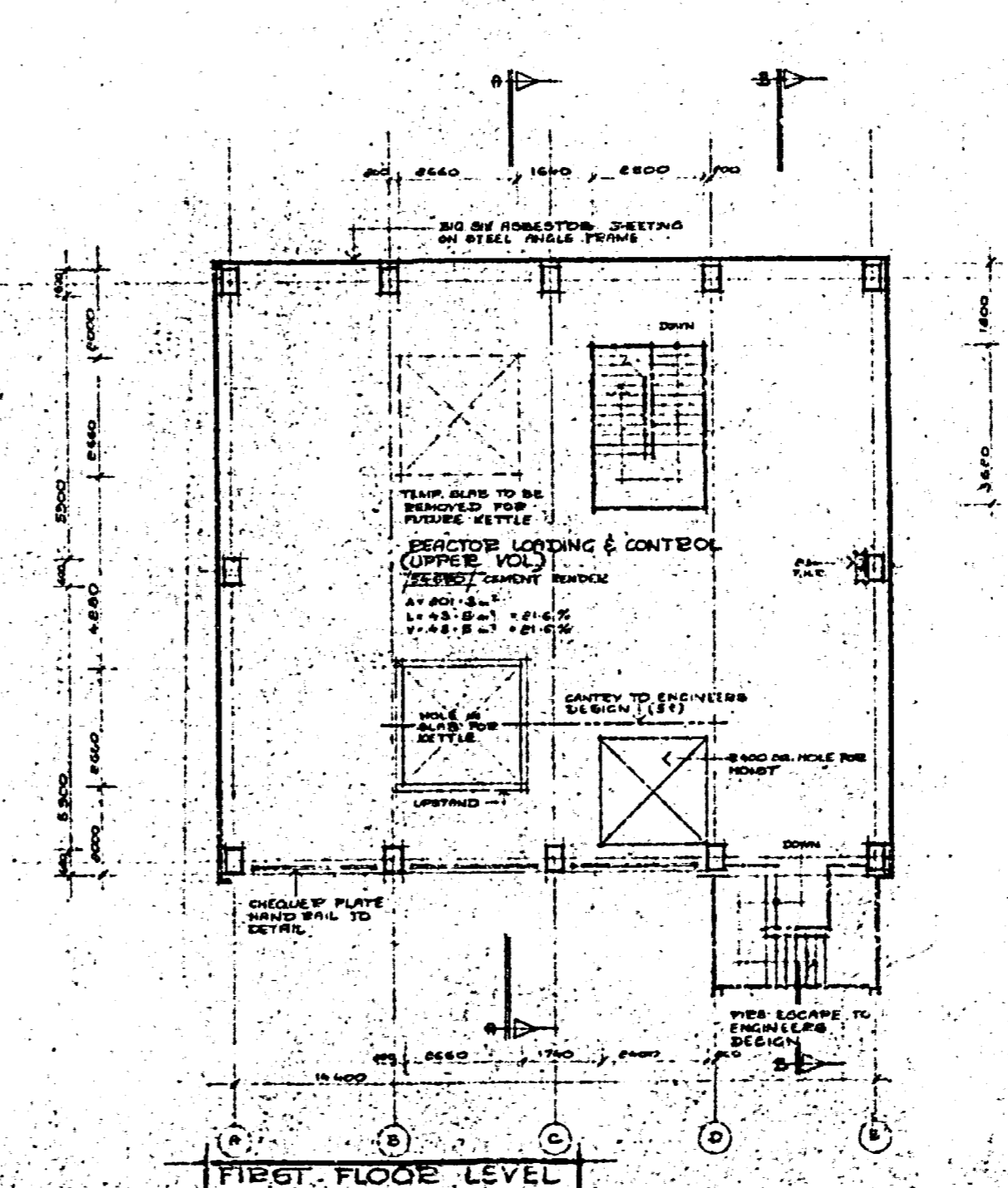
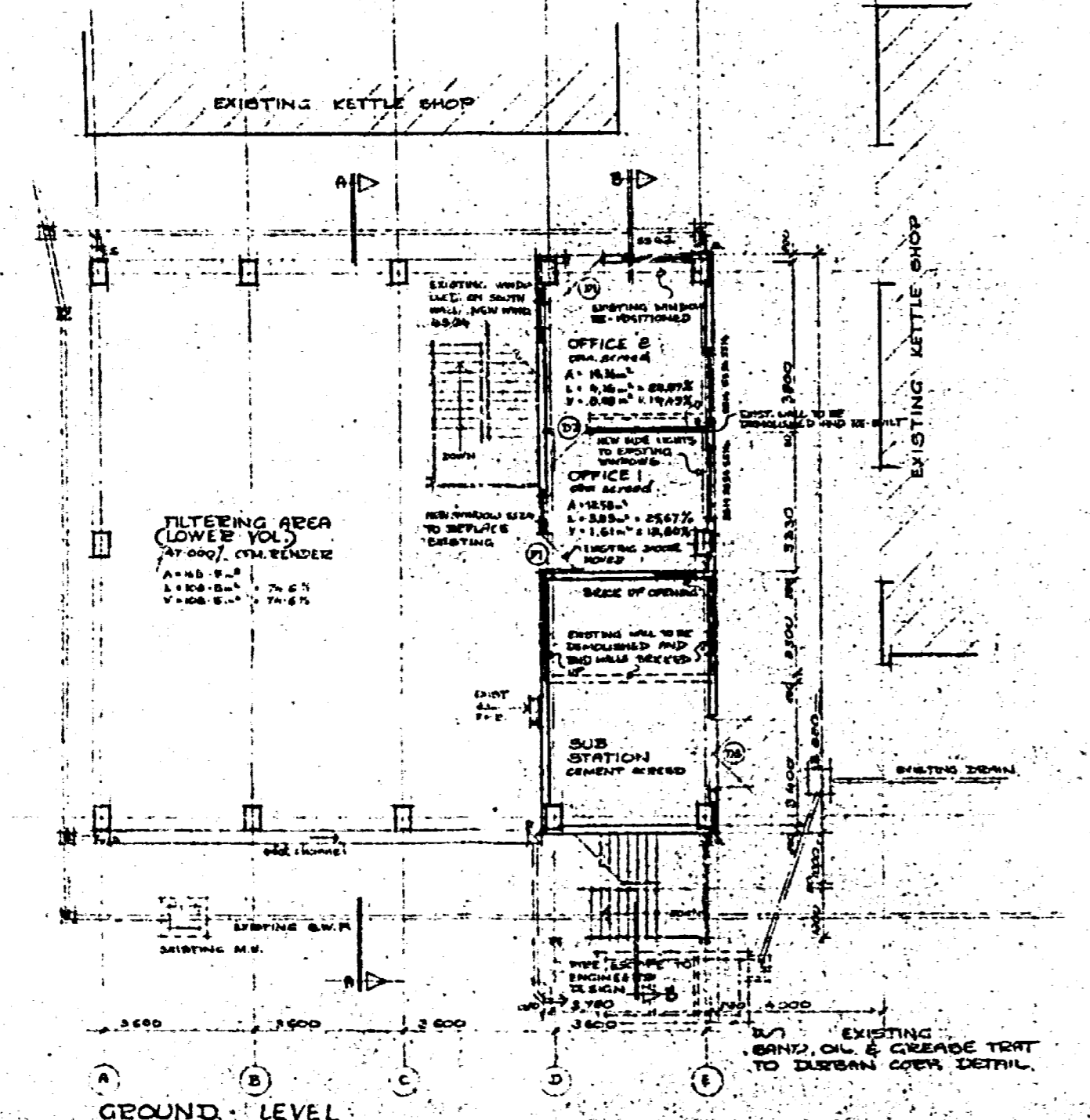
1236 South Coast Rd
 1st Floor, Plans for



DOOR SCHEDULE

Nº	DOOR	FRAME	IRONMONGERY	FINISH	Nº OFF & HAND
D1	D13 - 2032 - SOLID CORE DOOR WITH 700 x 600 GLAZED PANEL	PRESSED METAL DOOR FRAME FOR 230 WALL R.O.S.	SOLID CYLINDER LOCK Nº RET 316	1 FRAME COAT 1 UNDER COAT 1 FINISH COAT GLOSS WHITE	Nº OFF - 2 R.H. & L.H. 0
D2	D13 - 2032 - HOLLOW CORE DOOR	PRESSED METAL DOOR FRAME FOR 230 WALL R.O.S.	SOLID CYLINDER LOCK Nº RET 316	1 FRAME COAT 1 UNDER COAT 1 FINISH COAT GLOSS WHITE	Nº OFF - 1 R.H. 1 L.H. 0
D3	F.L.S. & B. H.W. DOOR 1155 - 2052 - 2000	S.T.M.S. H.W. DOOR FRAME WITH 100mm GUARDRAIL BOTH SIDES	SOLID CYLINDER DEADLOCK Nº RET 585 x 102 2000 BARREL MOUNT TO 2 LEAF	1 FRAME COAT 1 UNDER COAT 1 FINISH COAT GLOSS WHITE	Nº OFF - 1 R.H. 1 L.H. 1
D4	F.L.S. & B. DOORWOOD DOOR 613 - 2038	PRESSED METAL DOOR FRAME FOR 230 WALL R.O.S.	SOLID CYLINDER LOCK Nº RET 316	1 FRAME COAT 1 UNDER COAT 1 FINISH COAT GLOSS WHITE	Nº OFF - 1 R.H. 1 L.H. 0

CITY HEALTH DEPT., DURBAN
 PLANS SECTION
 RECEIVED 09-9-1975
 REPORT NO.
 APPROVED 13/9/75



ILL E G I B I E

- NOTES:-**
 NO ADDITIONAL FLOOR AREA
- EFFECTIVE WORKING TEMP.**
 18.0°C & A MAX AIR MOVEMENT OF 0.175 m/sec.
- LIGHT INTENSITIES**
- | AREA | LUX | C.R. INDEX |
|------------|-----|------------|
| OFFICES | 500 | 19 |
| LABORATORY | 320 | 25 |
| LOWER VOL. | 280 | 25 |
| UPPER VOL. | 280 | 25 |
- SUN CONTROL**
 ALUMINIUM OR SIMILAR LOUVRE SUN CONTROL TO OUTSIDE OF WEST FACING WINDOWS

ALL STEELWORK - STRUCTURES, GANTS, PILING, SHEETING FRAMEWORK, WALKWAY TO STRUCTURAL ENGINEERS DETAILS

ALL STRUCTURAL CONCRETE, FLOORS AND FOUNDATIONS TO BE IN ACCORDANCE WITH STRUCTURAL ENGINEERS DETAILS

ALTERATIONS TO EXISTING KETTLE SHOP FOR PLASCON EVANS PAINTS (NATAL) LTD.

POSTAL Nº 1236 SOUTH COAST ROAD

PLANS

DRAWN	DATE	SCALE	DESIGNED	CODE
K. ROONEY	0.9.75	1:100	J.G.B.	M.S.

FRANKLIN GARLAND & GIBSON
 ARCHITECTS P.L.C.

DURBAN
 200 STANDERD HOUSE