

1 Lex Chambers Lvl 0
1 : 100

COPYRIGHT: These drawings - a) Reserve copy right protection and the copyright vests in FCMB PTY LTD), unless otherwise agreed upon in writing. b) May not be reproduced, or transmitted in any form or by any means whatsoever, to any person without the written permission of the copyright holder. FCMB DESIGNS PTY LTD. will not be held responsible or liable in the delays of the approval of plans by local authorities. The contractor or appointed project manager are to check and verify that all drawings and detailing are correct for the relevant work being done prior to project commencement, and are to report any and all discrepancies and omissions directly to FCMB attention immediately. The contractor is to ensure that no changes in levels are made over local authority servitude's or underground services, unless prior permission has been obtained in writing by the local authority. All structural work, if any, are to be built strictly in accordance with professional engineers details and under his direct supervision.

ARCHITECT



10 Marble Ray Drive
Newlands East, Durban
4037

SIGNATURE

PROJECT

LEX CHAMBERS
ON: REM of PTN 10 of ERF 10671, Durban
AT: 24 Parry Lane, Durban

CLIENT

Lex Chambers

SIGNATURE

DRAWING TITLE

Floor Layouts
Ground Floor
1st Floor
2nd Floor

DATE 23/04/21
DRAWN L.P.
CHECKED T.N.

DRAWING SCALE

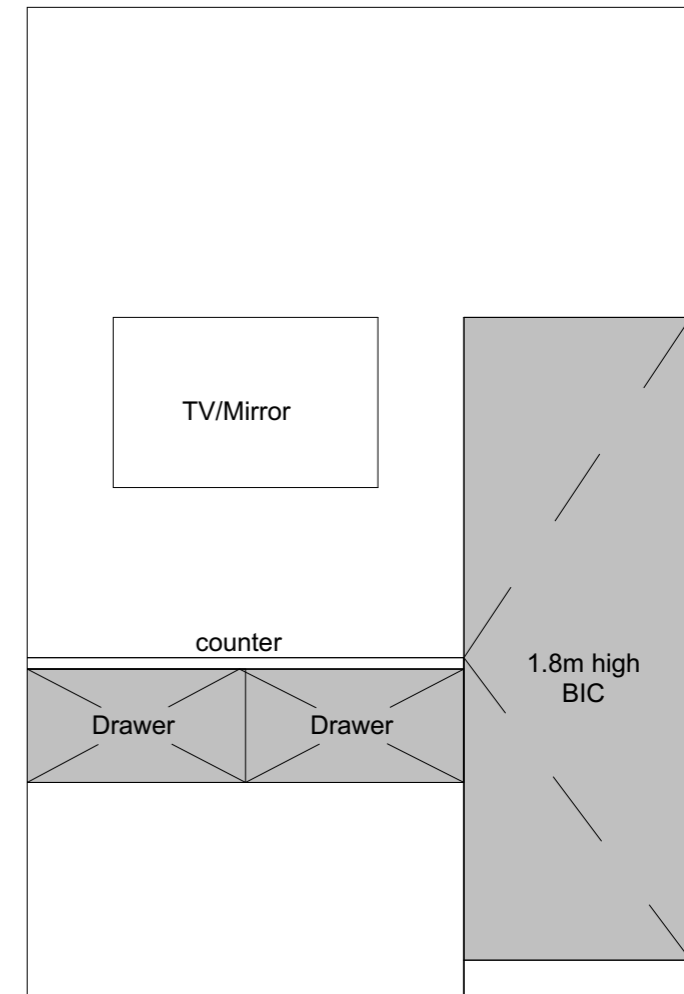
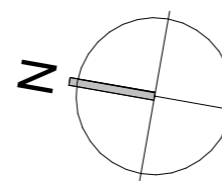
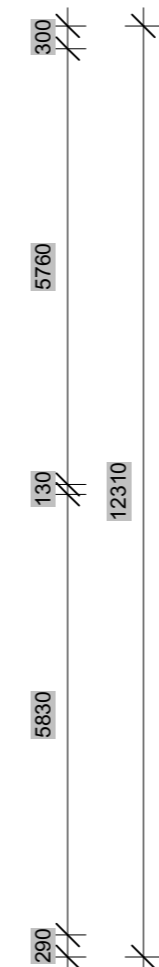
1:100

REVISIONS

REV	REVISION	DATE

DRAWING NUMBER

TD500_20-021_01



BIC and Shelf detail

2 Lex Chambers Lvl 1
1 : 100

COPYRIGHT: These drawings - a) Reserve copy right protection and the copyright vests in FCMB PTY LTD), unless otherwise agreed upon in writing. b) May not be reproduced, or transmitted in any form or by any means whatsoever, to any person without the written permission of the copyright holder. FCMB DESIGNS PTY LTD. will not be held responsible or liable in the delays of the approval of plans by local authorities. The contractor or appointed project manager are to check and verify that all drawings and detailing are correct for the relevant work being done prior to project commencement, and are to report any and all discrepancies and omissions directly to FCMB attention immediately. The contractor is to ensure that no changes in levels are made over local authority servitude's or underground services, unless prior permission has been obtained in writing by the local authority. All structural work, if any, are to be built strictly in accordance with professional engineers details and under his direct supervision.

ARCHITECT



10 Marble Ray Drive
Newlands East, Durban
4037

SIGNATURE

PROJECT

LEX CHAMBERS
ON: REM of PTN 10 of ERF 10671, Durban
AT: 24 Parry Lane, Durban

CLIENT

Lex Chambers

SIGNATURE

DRAWING TITLE

Floor Layouts
Ground Floor
1st Floor
2nd Floor

DATE 23/04/21
DRAWN L.P.
CHECKED T.N.

DRAWING SCALE

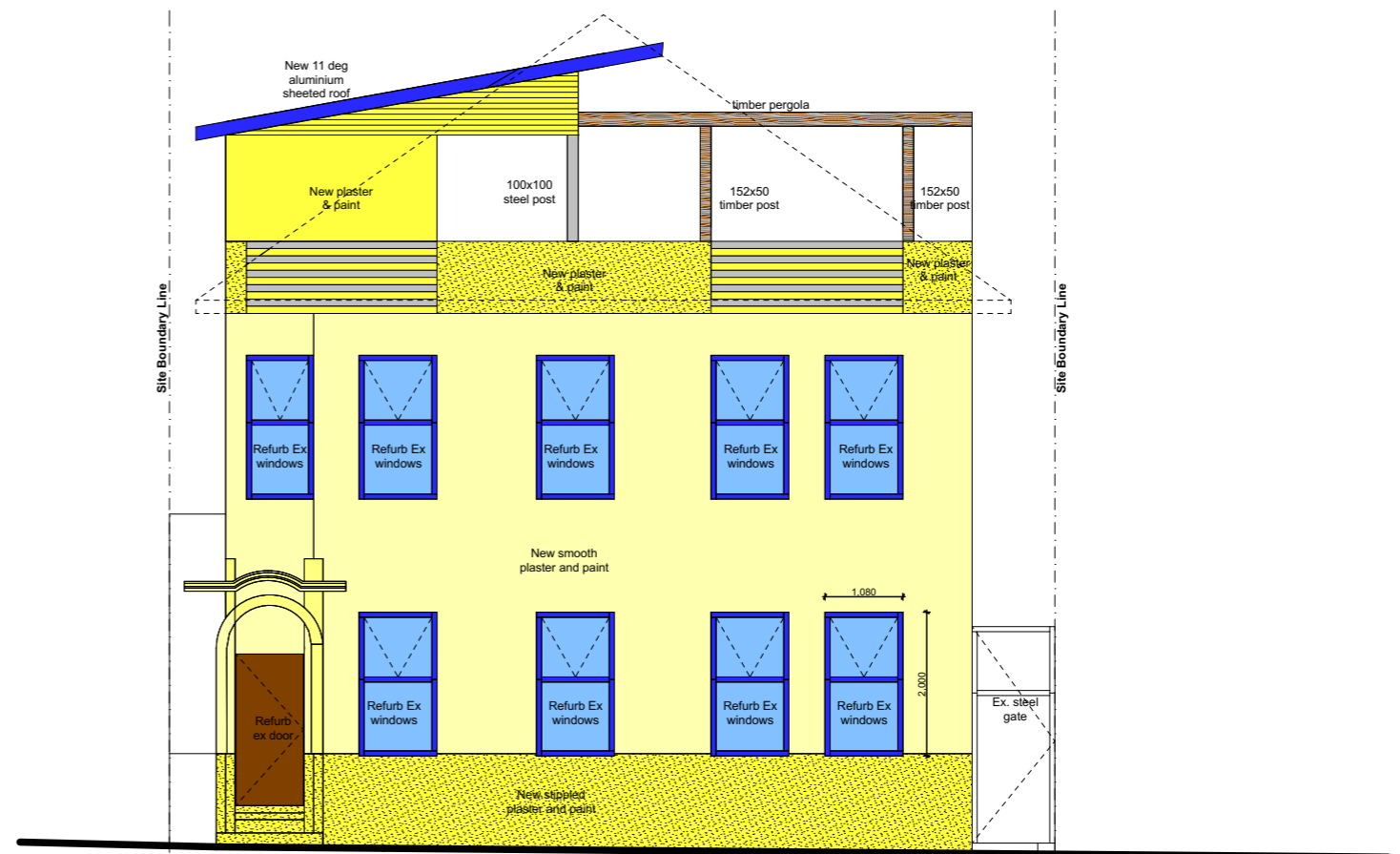
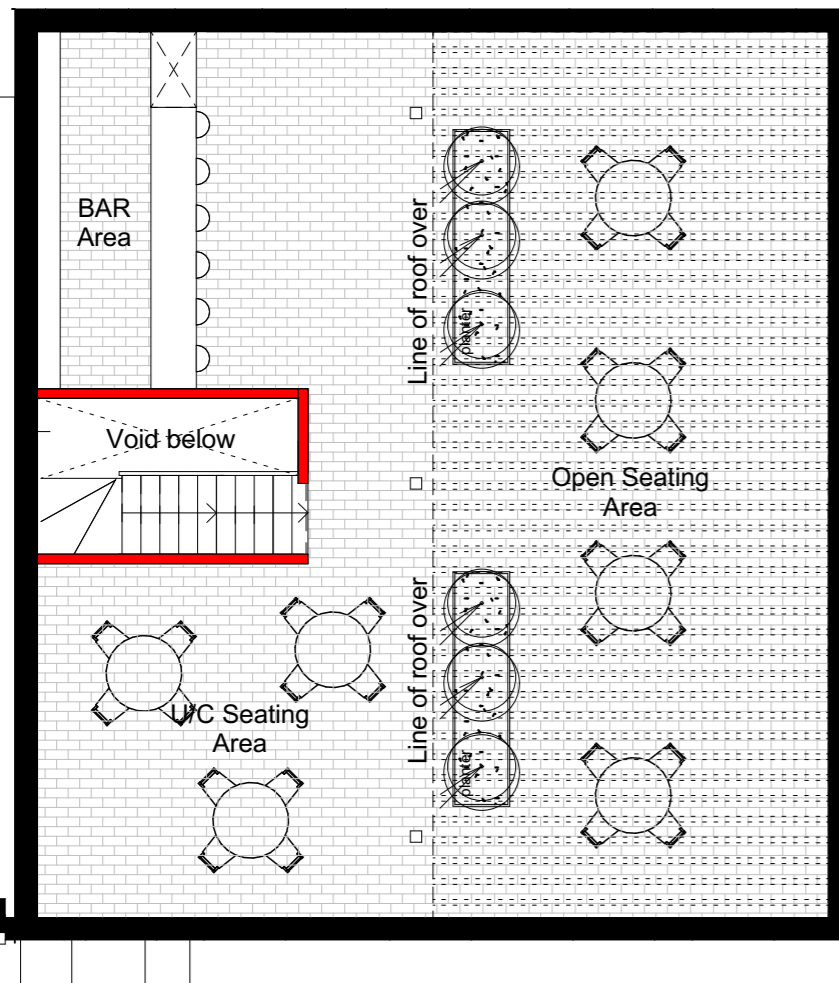
1:100

REVISIONS

REV	REVISION	DATE

DRAWING NUMBER

TD500_20-021_01



3 Lex Chambers Lvl 2
1 : 100

A Front Elevation
1 : 100

COPYRIGHT: These drawings - a) Reserve copy right protection and the copyright vests in FCMB PTY LTD), unless otherwise agreed upon in writing. b) May not be reproduced, or transmitted in any form or by any means whatsoever, to any person without the written permission of the copyright holder. FCMB DESIGNS PTY LTD. will not be held responsible or liable in the delays of the approval of plans by local authorities. The contractor or appointed project manager are to check and verify that all drawings and detailing are correct for the relevant work being done prior to project commencement, and are to report any and all discrepancies and omissions directly to FCMB attention immediately. The contractor is to ensure that no changes in levels are made over local authority servitude's or underground services, unless prior permission has been obtained in writing by the local authority. All structural work, if any, are to be built strictly in accordance with professional engineers details and under his direct supervision.

ARCHITECT



10 Marble Ray Drive
Newlands East, Durban
4037

SIGNATURE

PROJECT

LEX CHAMBERS

ON: REM of PTN 10 of ERF 10671, Durban
AT: 24 Parry Lane, Durban

CLIENT

Lex Chambers

SIGNATURE

DRAWING TITLE

Floor Layouts

Ground Floor
1st Floor
2nd Floor

DATE 23/04/21
DRAWN L.P.
CHECKED T.N.

DRAWING SCALE

1:100

REVISIONS

REV	REVISION	DATE

DRAWING NUMBER

TD500_20-021_01