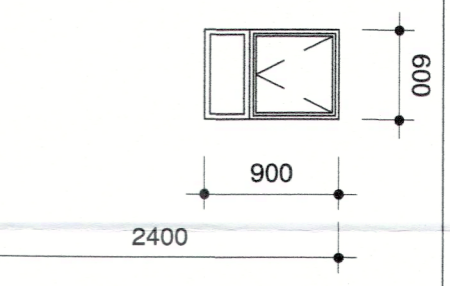


GENERAL DRAWING NOTES

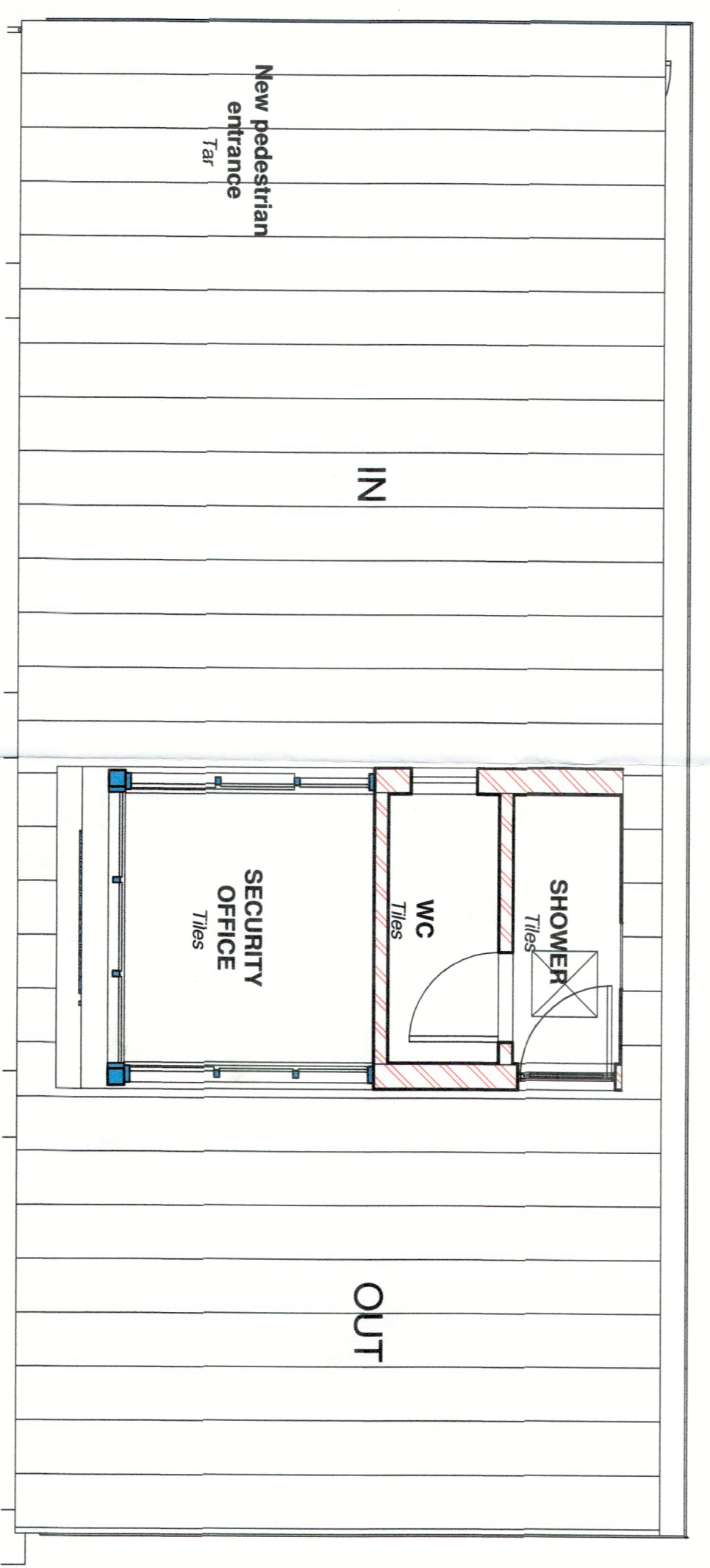
- THE DESIGN ON THIS DRAWING IS COPYRIGHT AND REMAINS THE PROPERTY OF THE ARCHITECTS.
- ALL WORK TO BE CARRIED OUT STRICTLY IN ACCORDANCE WITH MUNICIPAL REGULATIONS.
- DRAWINGS NOT TO BE SCALED. ONLY ANNOTATED DIMENSIONS TO BE USED.
- ALL RELEVANT DATUM, LEVELS, DIMENSIONS TO BE CHECKED ON SITE BEFORE COMMENCEMENT OF WORK.
- ALL DRAWINGS ARE TO BE CHECKED BY THE MAIN CONTRACTOR AND ANY DISCREPANCIES ON THE DRAWINGS OR BETWEEN THE DRAWINGS ARE TO BE REFERRED TO THE ARCHITECT.
- CONTRACTOR TO CHECK ALL QUANTITIES PRIOR TO ORDERING AND MANUFACTURE.
- CONTRACTOR TO PROVIDE SHOP DRAWINGS FOR APPROVAL BY ARCHITECT PRIOR TO MANUFACTURE.

Revision:
No.: Date: Description:

WINDOW SCHEDULE	
Location	Shower & WC
Description	Powder coated Charcoal aluminium window frames with 30.5 top hung opening casement windows, with concealed stainless friction stays. All with commercial beading and neoprene seals. COLOUR SAMPLE TO BE APPROVED BY ARCHITECT BEFORE MANUFACTURE OR INSTALLATION.
Glazing	6mm thick obscure Safety glass NOTE: ALL GLAZING TO COMPLY WITH SANS 10400 Part N
Homogeneity	As per manufacturer's specifications and details FROM MANUFACTURE OR INSTALLATION

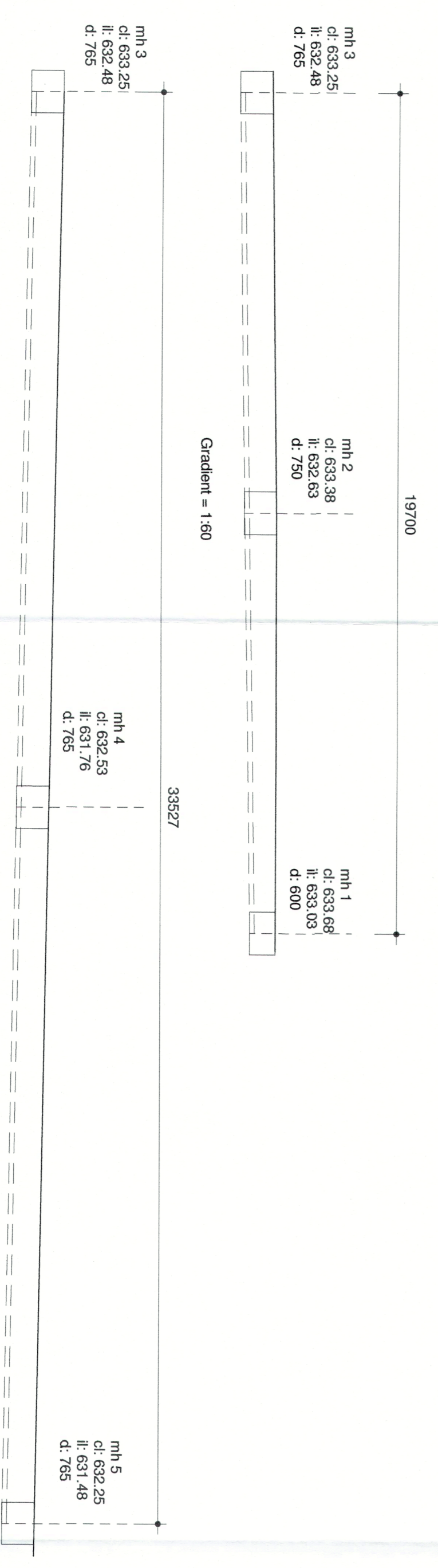


DOOR SCHEDULE	
Door type	D1
Location	Shower & WC
Door Description	Powder coated Charcoal aluminium system glass door with 100mm high bottom rail and tan light essex seals. COLOUR SAMPLE TO BE APPROVED BY ARCHITECT BEFORE MANUFACTURE OR INSTALLATION.
Frame Description	Powder coated Charcoal aluminium system to suit ARCHITECT BEFORE MANUFACTURE OR INSTALLATION.
Glazing	8mm thick Safety glass NOTE: ALL GLAZING TO COMPLY WITH SANS 10400 Part N
Homogeneity	As per manufacturer's specifications and details BEFORE MANUFACTURE OR INSTALLATION
Door type	D2
Location	WC
Door Description	813 x 2032 semi solid core selected meranti timber door to receive Fabson universal undercoat and 2 coats of Fabson Vetroglo (water base paint)
Frame Description	Selected meranti timber frame to suit wall thickness, to receive Fabson universal undercoat and 2 coats of Fabson Vetroglo (water base paint)
Glazing	None
Homogeneity	ASSA ABLÖV Gower 2 lever lockset with chrome handle finish (Code: C28822452 including 1, Door step. (Code: C273155)
Door type	SFC01
Location	Security Office
Door Description	Powder coated Charcoal aluminium system clear glass door with 100mm high bottom rail, as indicated. All on glazing beads with neoprene seals and safety glass. COLOUR SAMPLE TO BE APPROVED BY ARCHITECT BEFORE MANUFACTURE OR INSTALLATION.
Frame Description	Powder coated Charcoal aluminium system to suit door. COLOUR SAMPLE TO BE APPROVED BY ARCHITECT BEFORE MANUFACTURE OR INSTALLATION.
Glazing	8mm Clear safety glazing to fixed panels. ALL GLAZING TO COMPLY WITH SANS 10400 Part N
Homogeneity	As per manufacturer's specifications and details FROM MANUFACTURE OR INSTALLATION
Door type	SFC02
Location	Security Office
Door Description	Powder coated Charcoal aluminium shopfront with 100mm high bottom rail, as indicated. All on glazing beads with neoprene seals and safety glass. COLOUR SAMPLE TO BE APPROVED BY ARCHITECT BEFORE MANUFACTURE OR INSTALLATION.
Frame Description	Powder coated Charcoal aluminium system to suit door. COLOUR SAMPLE TO BE APPROVED BY ARCHITECT BEFORE MANUFACTURE OR INSTALLATION.
Glazing	8mm Clear safety glazing to fixed panels. ALL GLAZING TO COMPLY WITH SANS 10400 Part N
Homogeneity	As per manufacturer's specifications and details FROM MANUFACTURE OR INSTALLATION
Door type	SFC03
Location	Security Office
Door Description	Powder coated Charcoal aluminium system clear glass door with 100mm high bottom rail, as indicated. All on glazing beads with neoprene seals and safety glass. COLOUR SAMPLE TO BE APPROVED BY ARCHITECT BEFORE MANUFACTURE OR INSTALLATION.
Frame Description	Powder coated Charcoal aluminium system to suit door. COLOUR SAMPLE TO BE APPROVED BY ARCHITECT BEFORE MANUFACTURE OR INSTALLATION.
Glazing	8mm Clear safety glazing to fixed panels. ALL GLAZING TO COMPLY WITH SANS 10400 Part N
Homogeneity	As per manufacturer's specifications and details FROM MANUFACTURE OR INSTALLATION



Ceiling Spec.	
	Skimmed plaster jointed ceiling 9.5mm thick. Taper-edge moisture resistant plaster board fixed on concealed fixing hanger system. Joints to be taped and finished with Rhinogrip, all in accordance with the manufacturer's specification. Shadowline cornice detail to architect's approval. Plasterboard to receive 1 coat undercoat and 2 coats top coat applied as per manufacturer's instructions.
	Concealed fix metal sheets as ceiling fixed from underside of canopy.
	600 X 600 Aluminium Trap door

Ceiling Layout Plan
1 : 50



Drainage section 1
1 : 100

Client



Signature: _____ Date: _____

SAKHISIZWE
ARCHITECTS
41 SWAPO ROAD, BROOKDALE, DURBAN NORTH
TEL: 031 569 3424 FAX: 031 569 3518
www.sakhisizwe.co.za

Professional Architects signature
Mr K.P. Mawemana (Pr. Arch) sascap (792) sask (7929)

Project Title:
PROPOSED NEW GUARDHOUSE FOR UMGENI WATER AT NCT BUILDING ON LOT 3327 - 346 BURGERS STREET, PIETERMARITZBURG

Date: 06/18/21 Scale: As Indicated
Drawn: SN
Drawing Description: CEILING LAYOUT PLAN, WINDOW & DOOR SCHEDULE

NEIGHBOURS CONSENT		
Address	Name & ID	Sign
1		
2		
3		
4		
5		

Job no.:	Drawing no.:	Rev. no.:
S499	INA/01/ARCH/CI/0014/4118	
ISSUED FOR APPROVAL		
ISSUED FOR INFORMATION		
ISSUED FOR SUBMISSION		
ISSUED FOR TENDER		
ISSUED FOR CONSTRUCTION		