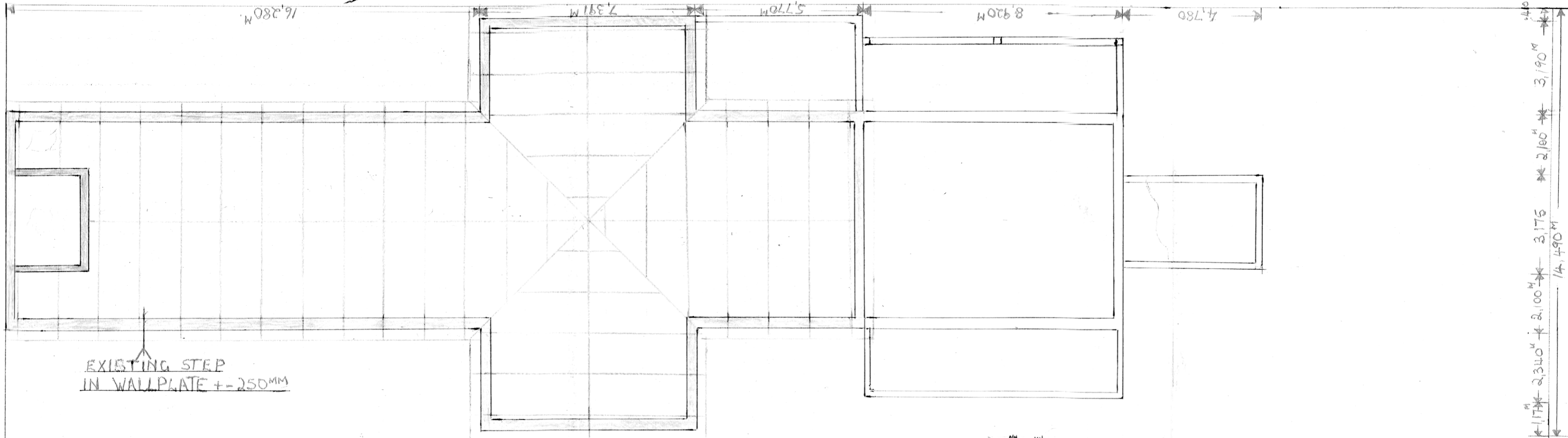


RETIFF STREET

LOOP STREET

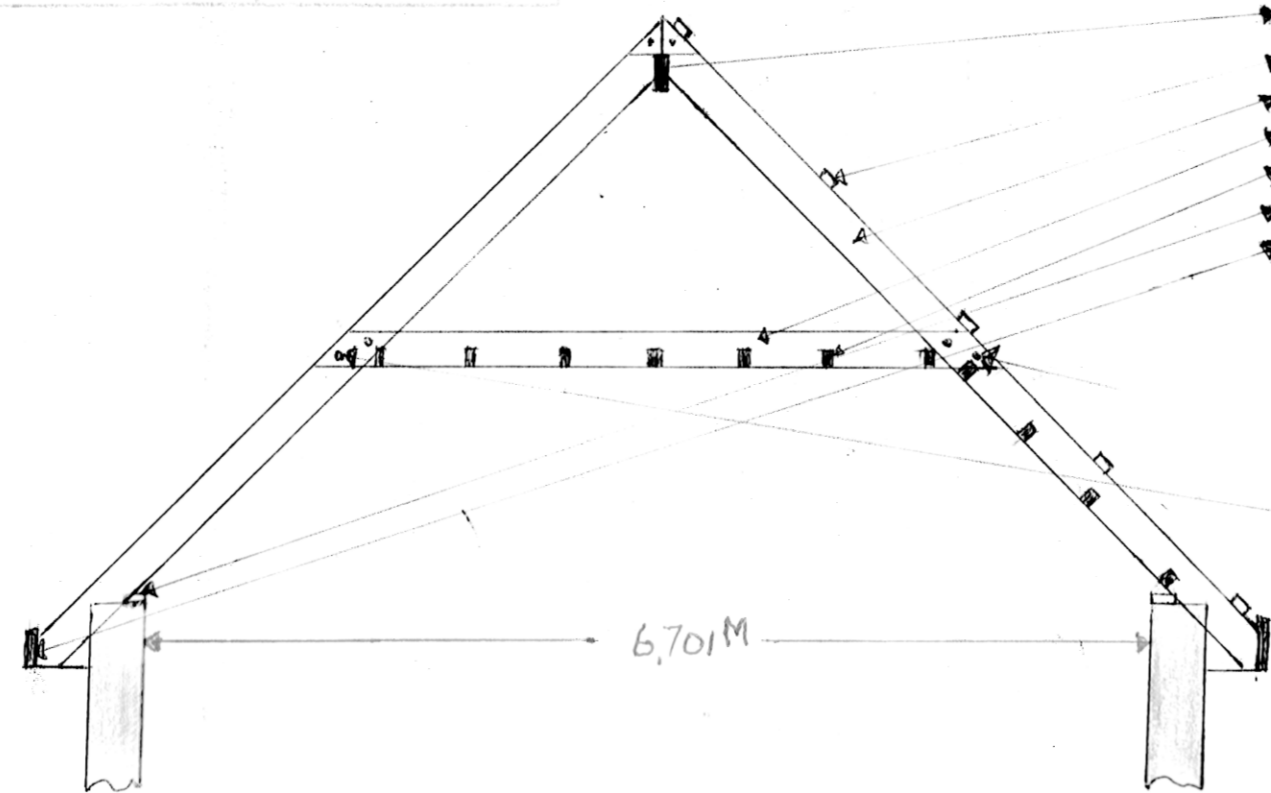


EXISTING STEP IN WALLPLATE +/- 250MM

ST. ANTHONY CATHOLIC CHURCH

PLAN OF LAYOUT

SCALE 1=100



- ▶ 228<sup>MM</sup> x 50<sup>MM</sup> CCA TREATED PINE 42 LINEAR METERS TOTAL RIDGE BOARD.
  - ▶ 76<sup>MM</sup> x 50<sup>MM</sup> CCA TREATED PINE 410 LINEAR METERS TOTAL TILE PURLINS.
  - ▶ 38<sup>MM</sup> x 228<sup>MM</sup> CCA TREATED PINE x 6,000<sup>M</sup> x 48 OFF COMMON RAFTERS.
  - ▶ 38<sup>MM</sup> x 228<sup>MM</sup> CCA TREATED PINE x 4,800<sup>M</sup> x 28 OFF TIEBEAM.
  - ▶ 38<sup>MM</sup> x 114<sup>MM</sup> CCA TREATED PINE 630 LINEAR METERS TOTAL CEILING BRANDING.
  - ▶ 38<sup>MM</sup> x 114<sup>MM</sup> CCA TREATED PINE 58 LINEAR METERS TOTAL WALL PLATES.
  - ▶ 30<sup>MM</sup> x 210<sup>MM</sup> PAR. TREATED PINE. x 6,300<sup>M</sup> 6 OFF
  - x 3,600<sup>M</sup> 2 OFF
  - x 3,300<sup>M</sup> 2 OFF
  - x 5,700<sup>M</sup> 2 OFF
  - x 6,000<sup>M</sup> 4 OFF
  - x 4,200<sup>M</sup> 4 OFF
- FASCIA BOARDS.
- ▶ JUNCTION AT RAFTER AND TIEBEAM TWICE BOLTED.
  - ▶ 25<sup>MM</sup> x 152<sup>MM</sup> CCA TREATED S.A. PINE x 3,600<sup>M</sup> x 16 OFF VALLEY BOARDS.
  - ▶ 10<sup>MM</sup> x 120<sup>MM</sup> CARRIAGE BOLTS + 60<sup>MM</sup> x 60<sup>MM</sup> WASHERS 180 OFF

ROOF PRINCIPAL PLAN. 22 OF

SCALE 1=50