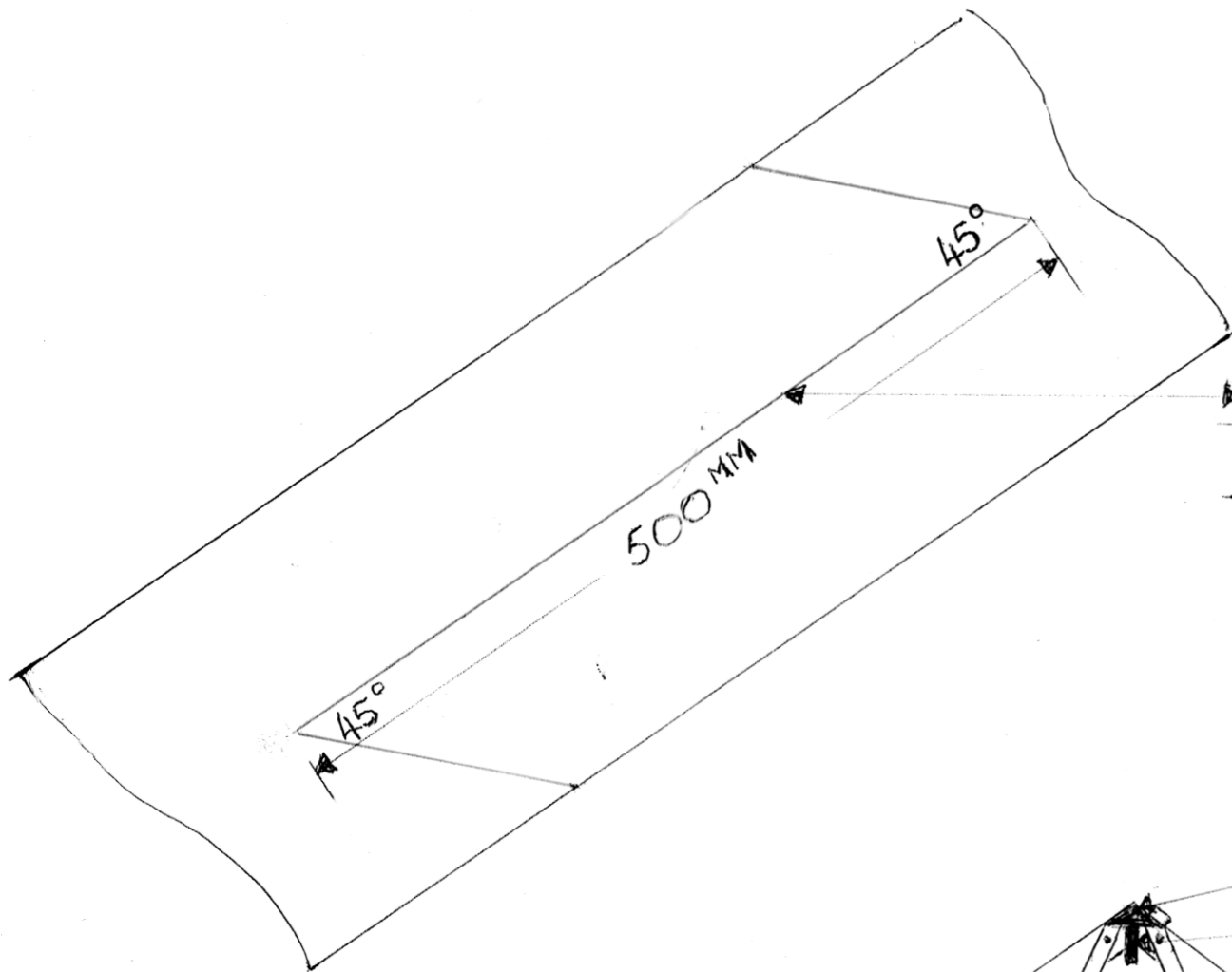
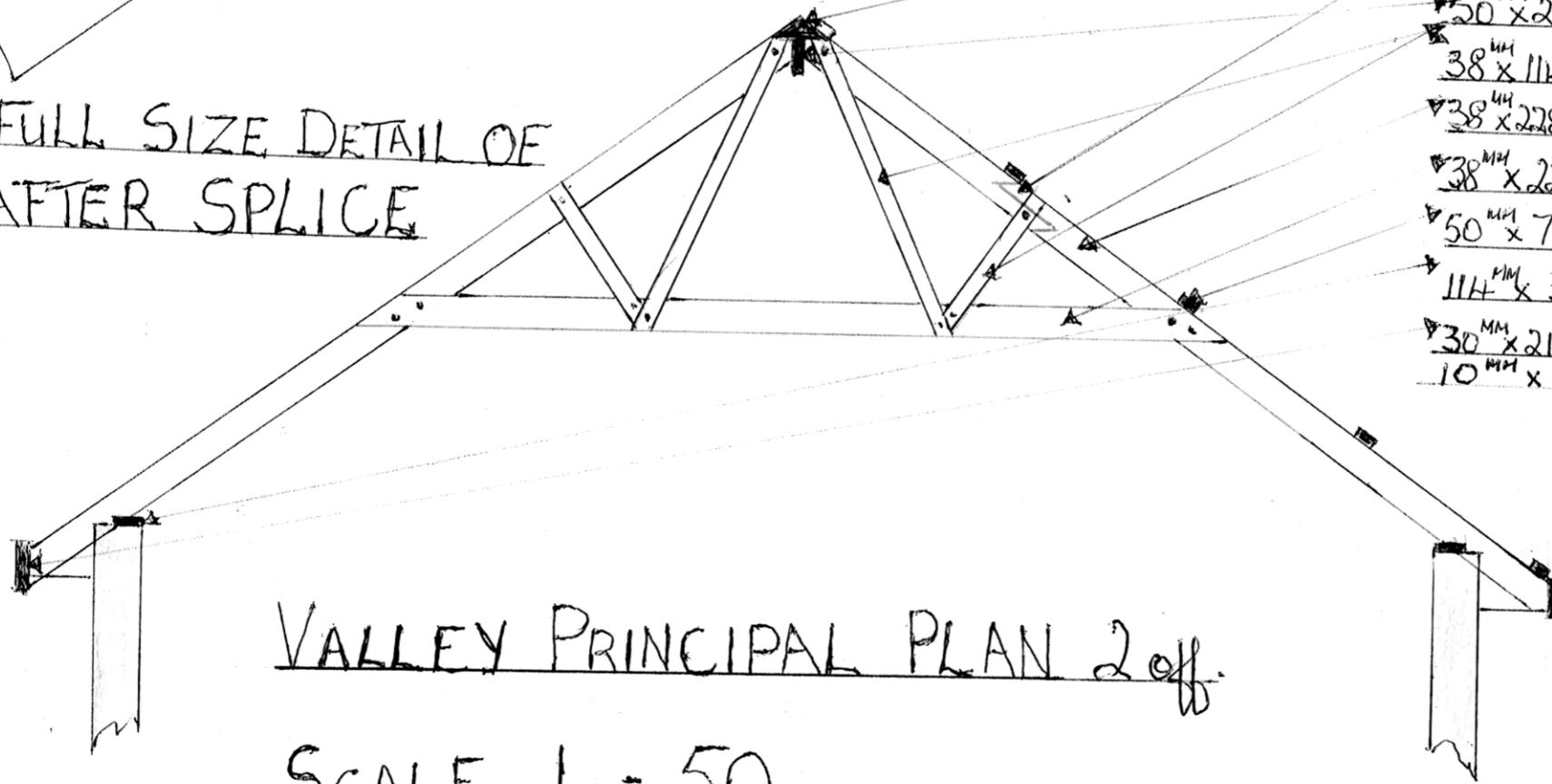


ST ANTHONY'S CATHOLIC CHURCH



▶ A.B.E. 372 GENERAL PURPOSE
EPOXY JOINT

QUARTER FULL SIZE DETAIL OF
VALLEY RAFTER SPLICE



VALLEY PRINCIPAL PLAN 2 off.

SCALE 1 = 50

- ▶ 4^{MM} TWICE DRILLED APEX PLATE 2 OFF X 120°
- ▶ RAFTER SPLICE, AS PER DETAIL
- ▶ 50^{MM} X 228^{MM} C.C.A TREATED PINE RIDGE BOARD, E.M.
- ▶ 38^{MM} X 114^{MM} C.C.A TREATED PINE 3,900^M LINEAR 4 OFF STRUTS
- ▶ 38^{MM} X 228^{MM} C.C.A TREATED S.A. PINE 5,400^M LINEAR 4 OFF VALLEY
- ▶ 38^{MM} X 228^{MM} C.C.A TREATED S.A. PINE 2,700^M LINEAR 4 OFF RAFTERS
- ▶ 38^{MM} X 228^{MM} C.C.A TREATED S.A. PINE 6,600^M LINEAR 2 OFF TIE BEAM
- ▶ 50^{MM} X 76^{MM} C.C.A TREATED S.A. PINE PUR LIN. E.M.
- ▶ 114^{MM} X 38^{MM} C.C.A TREATED S.A. PINE WALL PLATE, E.M.
- ▶ 30^{MM} X 210^{MM} P.A.R TREATED S.A. PINE FASCIA BOARD, E.M.
- ▶ 10^{MM} X 120^{MM} CARRIAGE BOLTS and 60^{MM} X 60^{MM} WASHERS.