

PLAN OF PROPOSED ALTERATIONS
TO ST ANTHONY'S CHURCH P.M. BURG
scale 2-1'

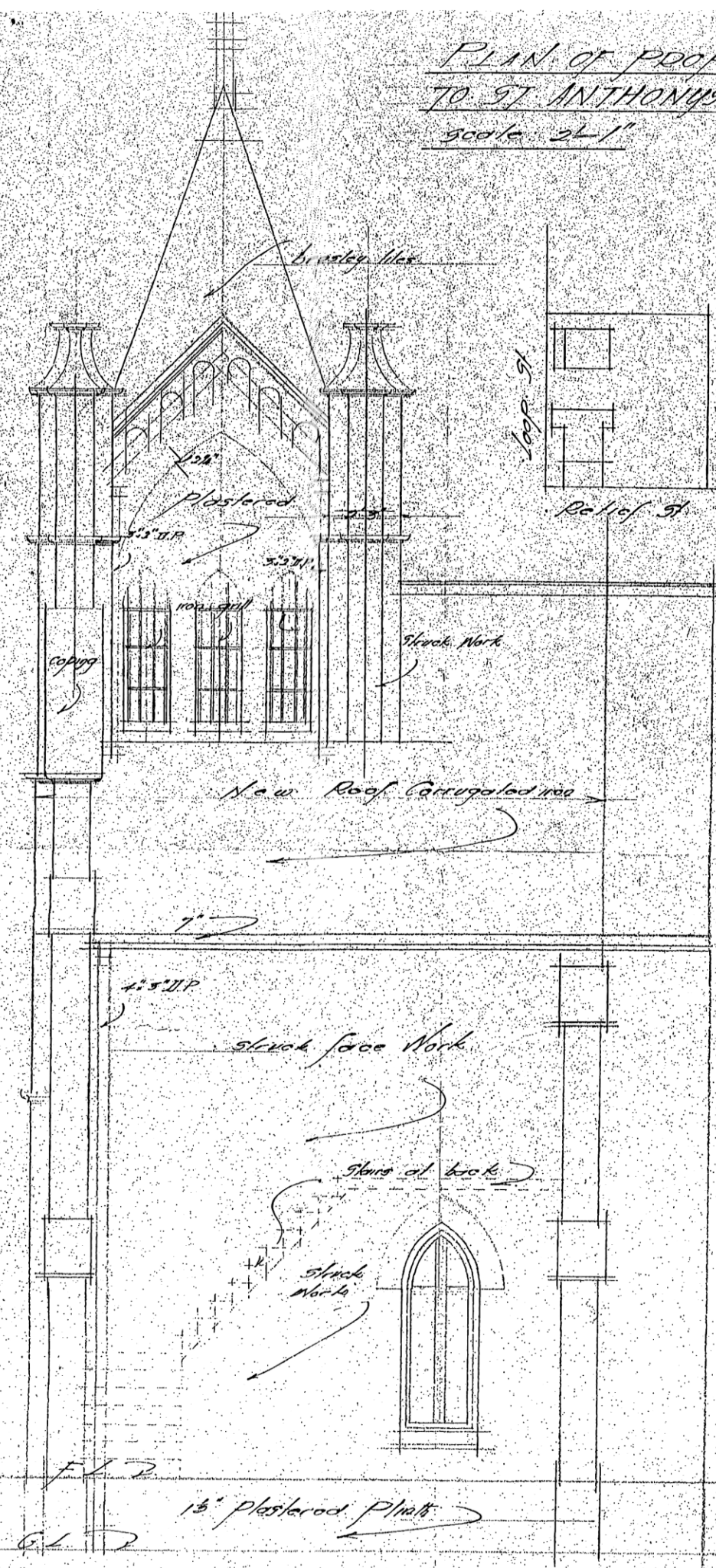
Dist. Sullivan & perboloo.
 Treble & Govt. Surveyors.
 P.M.B. & Durbin.
 J. Macmillan
 ARCHT

CITY ENGINEER'S OFFICE.
 10 SEP 1936
 5270185.
 RECEIVED.

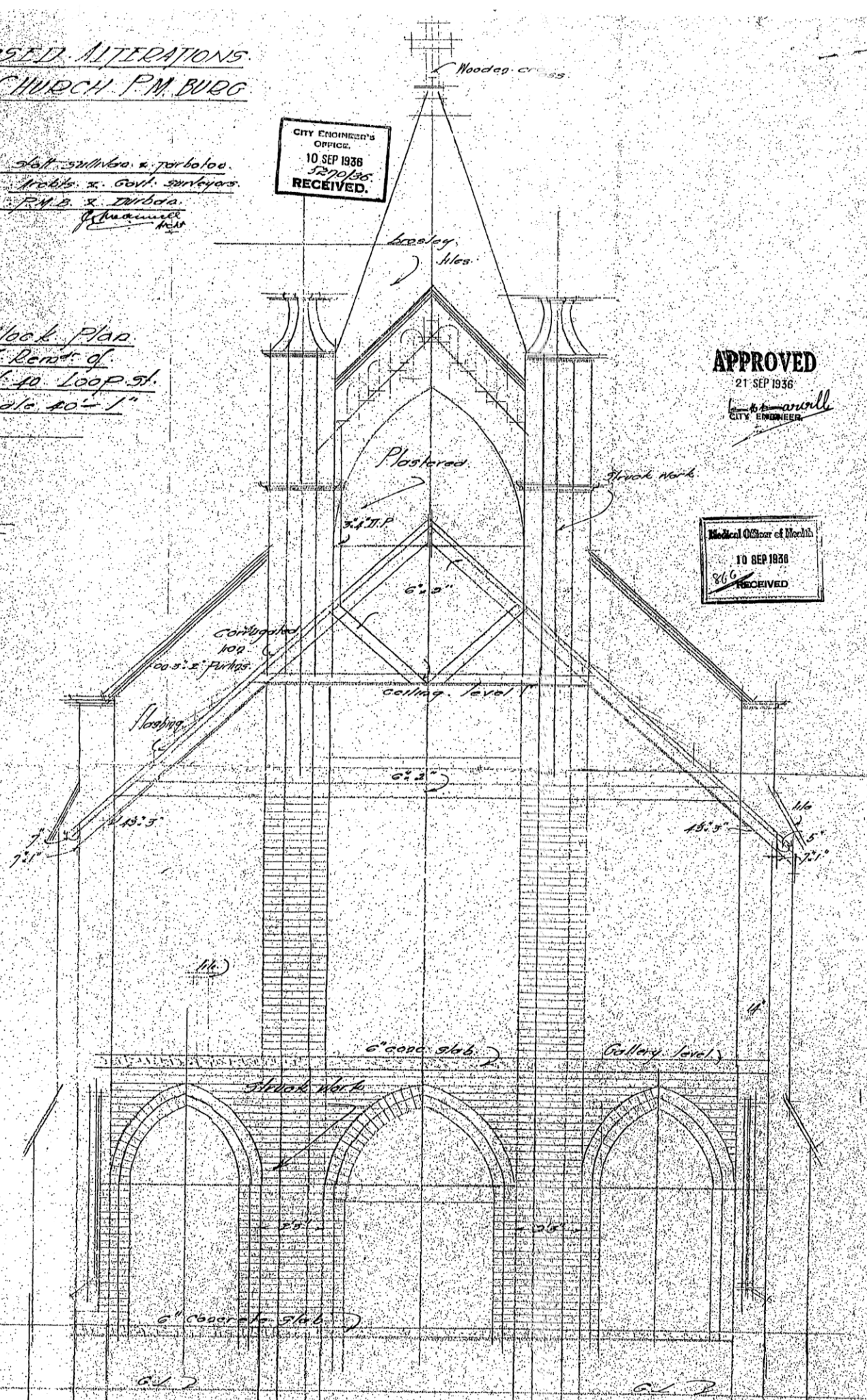
Block Plan
of Rear of
St. to Loop St.
scale 40'-1'

APPROVED
 21 SEP 1936
 J. Macmillan
 CITY ENGINEER

Medical Officer of Health
 10 SEP 1936
 866
 RECEIVED



SIDE ELEVATION.



SECTION C-II