

LEASE HOLD DIAGRAM

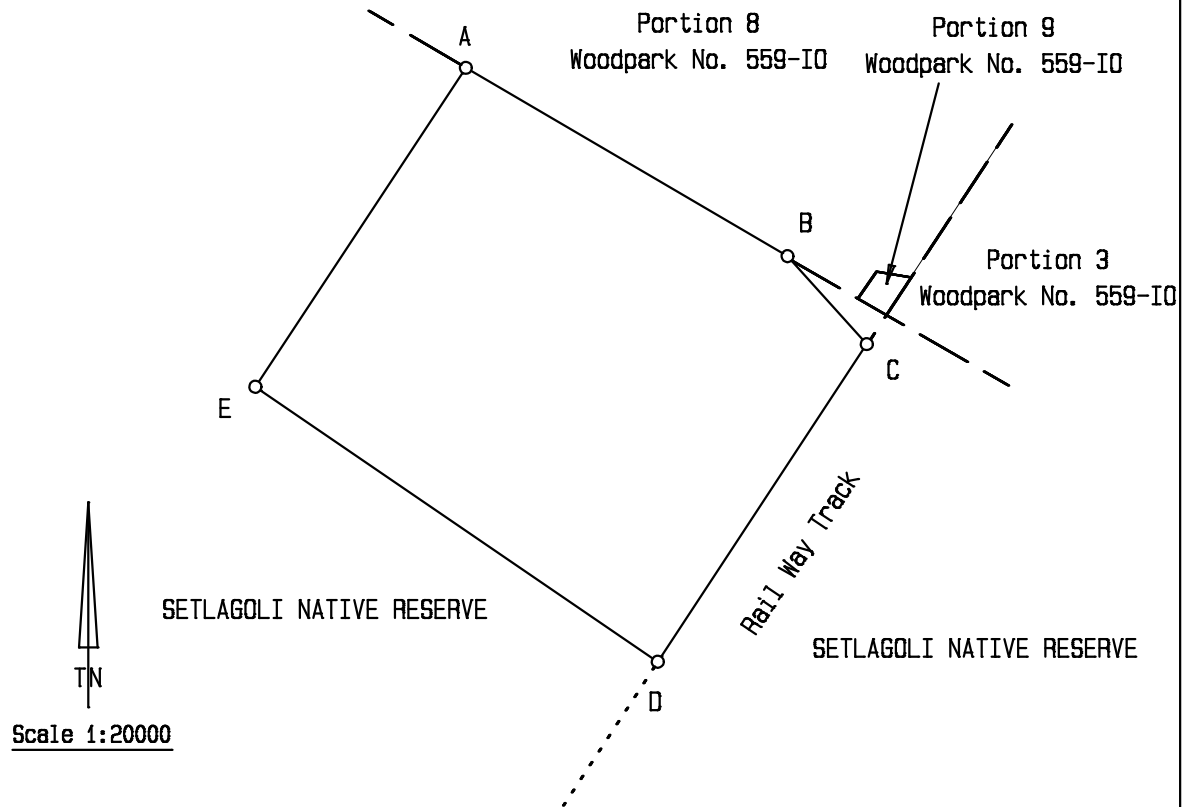
SIDES METRES		ANGLES OF DIRECTION	CO-ORDINATES Y System WG. 25° X		S. G. No.
		Constants	+ 0,00	+2 800 000,00	APPROVED
AB	987,36	300 15 30	A	-35 673,67	101 646,54
BC	313,41	317 53 40	B	-36 526,52	102 144,07
CD	1 005,63	33 26 17	C	-36 736,66	102 376,58
DE	1 290,70	124 15 03	D	-36 182,52	103 215,76
EA	1 010,78	213 30 31	E	-35 115,65	102 489,33
TRIGONOMETRICAL BEACONS					
Goshen		(44)	△	- 42 553,13	+ 88 499,07
Goldridge		(94)	△	- 24 648,45	+ 103 708,57

APPROVED

Date:
for SURVEYOR-
GENERAL

Description of Beacons:

A, B, C, D, E : 20mm Round Iron Peg



The figure ABCDEA
represents 134,7423 Hectares of land, being
a Lease Area over
a portion of SETLAGOLI NATIVE RESERVE

Province of the North West
Surveyed in February 2013

This diagram is annexed to No. dated i. f. o.	The original diagram is S.G. No. Transfer	File S. R. Comp. IO-1 (5792)
Registrar of Deeds		