

System Lo 31°

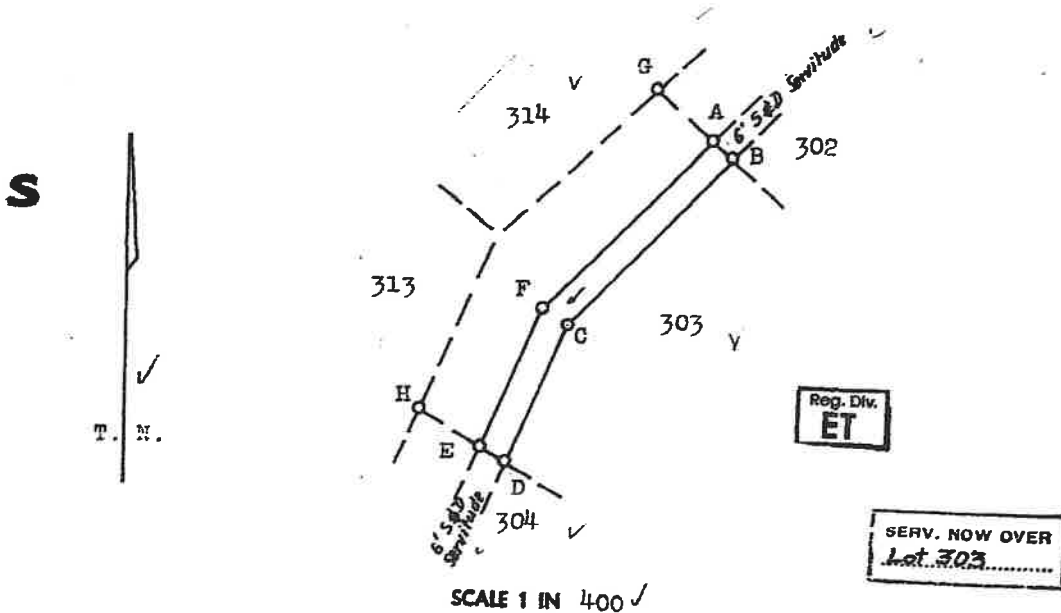
SIDES		ANGLES OF DIRECTION	CO-ORDINATES	
ENGLISH FEET			Y	X
		Constants	+36000.00	+10911000.00
AE	6.00	312.5.0	A + 402.55	+ 153.95
BC	54.09	44.11.40	B + 398.09	+ 157.97
CD	35.18	22.59.30	C + 435.79	+ 196.75
DE	6.04	119.41.50	D + 449.53	+ 229.14
EF	35.60	202.59.30	E + 454.77	+ 226.14
FA	54.98	224.11.40	F + 440.87	+ 193.37
AG	18.07	132.5.0	G + 415.95	+ 141.84
EH	16.87	119.41.50	H + 469.43	+ 217.77

Approved

J. M. March
Surveyor General
18. 2. 1961

Beacons.

- A E F ✓ No beacons. ✓
- B C D G ✓ " pegs. ✓
- H ✓ " pipe next to concrete post. ✓



The figure A B C D E F ✓
represents a Sewer Servitude 6' wide over
of land being
Amanzimtoti Lot 303 of A of Umlazi Native Location No. 4676
situate in the Borough of Amanzimtoti, County of Durban, Province of Natal
Surveyed in September - 1960, by me ✓
December
L. Ferramosca ✓
Land Surveyor

This diagram relates to <i>SERVITUDE</i> No. <i>320/1961</i> Registrar of Deeds	Original diagram is S.V. No. 752/10 ✓ relating to Deed of Transfer No. 5711/1941 ✓	File No. 31128 Survey Records 1100/1960 Compilation J. J. 53.64 Degree Sheet 63 Tracing General Plan
	ET-28-138	

SEALANDAIR