

GENERAL PLAN

THE FIGURE ABCDEFGHJKLMNPQRS' HIGH WATER MARK OF INDIAN OCEAN T' REPRESENTS

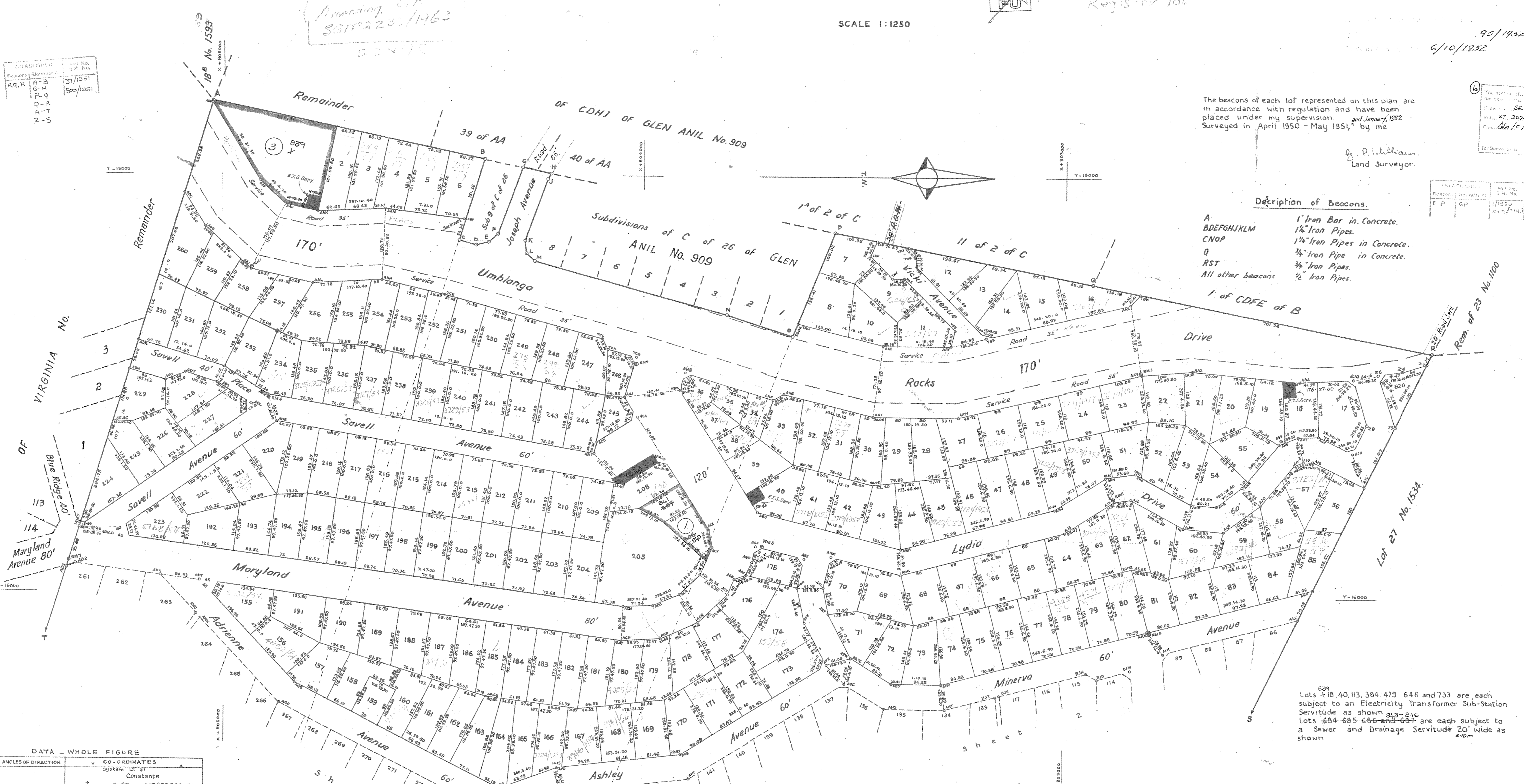
GLENASHLEY TOWNSHIP

AND COMPRISES 804 LOTS NUMBERED 1-803 & 820 PUBLIC PLACES NUMBERED 804-819
ROADS AND LANES. SITUATE ON SUB-DIVISION 26 OF THE FARM GLEN ANIL NO. 909 COUNTY OF VICTORIA PROVINCE OF NATAL. VIDE DIAGRAM SG.5283/51 RELATING TO CERTIFICATE OF AMENDED TITLE ON CONSOLIDATION NO. 5493/1952.

SCALE 1:1250

Approved
Surveyor General
27-5-1952

Established	Reg. No.
A.R.	37/1951
G.H.	50/1951
P.Q.	
A.T.	
R.S.	



The beacons of each lot represented on this plan are in accordance with regulation and have been placed under my supervision, and January, 1952. Surveyed in April 1950 - May 1951 by me

P. Williams
Land Surveyor.

- Description of Beacons.
- A 1' Iron Bar in Concrete.
 - BDEFHJKLM 1 1/2" Iron Pipes.
 - CNOP 1 1/2" Iron Pipes in Concrete.
 - Q 3/4" Iron Pipe in Concrete.
 - RST 3/4" Iron Pipes.
 - All other beacons 1/2" Iron Pipes.

DATA - WHOLE FIGURE

SIDES	English Feet	ANGLES OF DIRECTION	CO-ORDINATES
AB	660.80	191° 59' 50"	A + 4825.88 + 5024.99
BC	203.60	287° 14' 40"	B - 14963.23 + 4378.62
CD	40.70	195° 23' 00"	C - 15157.47 + 4438.98
DE	30.32	166° 16' 30"	D - 15160.47 + 4399.74
EF	30.32	139° 32' 20"	E - 15161.27 + 4370.58
FG	169.78	110° 25' 40"	F - 15141.59 + 4347.21
GH	68.92	191° 39' 50"	G - 14992.49 + 4287.95
HJ	15.06	290° 45' 40"	H - 14996.82 + 4220.54
KJ	159.15	290° 25' 40"	J - 15010.02 + 4227.79
KL	28.63	262° 16' 50"	K - 15159.16 + 4283.33
LM	52.63	235° 31' 40"	L - 15187.54 + 4279.48
LN	472.24	195° 23' 00"	M - 15207.16 + 4238.72
NO	164.78	197° 41' 00"	N - 15332.54 + 3803.40
OD	267.48	111° 37' 10"	O - 15382.58 + 3646.40
PE	624.33	191° 08' 10"	P - 15133.91 + 3847.85
QR	815.42	191° 05' 20"	Q - 15294.48 + 2935.28
RS	6188.04	154° 11' 32"	R - 21385.08 + 21385.08
ST	2047.04	30° 47' 10"	S - 20971.92 + 4827.50
TT'	5327.23	107° 14' 00"	T - 19913.95 + 6603.26
TT'		297° 14' 00"	

REFERENCE MARKS CO-ORDINATES

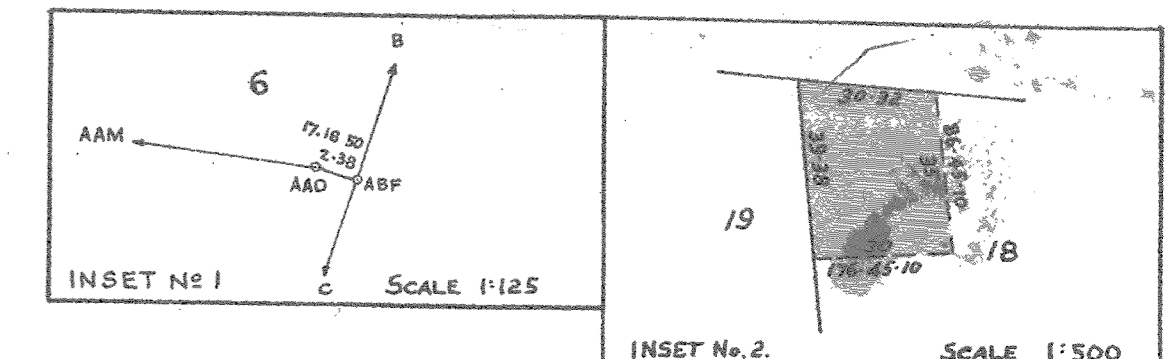
Block	Point	CO-ORDINATES
RM 1	15 224.03	+ 4933.54
RM 2	15 451.36	+ 4816.19
RM 3	15 462.28	+ 5020.05
RM 4	15 531.50	+ 4921.91
RM 5	15 927.04	+ 5316.78
RM 6	15 769.81	+ 2822.96
RM 7	15 927.04	+ 5316.78
RM 8	15 524.42	+ 4466.07
RM 9	15 686.42	+ 5797.43
RM 10	17 991.86	+ 5195.65
RM 11	16 404.98	+ 5527.41
RM 12	16 979.77	+ 3648.91
RM 13	17 384.35	+ 5623.81
RM 14	17 929.78	+ 4703.24
RM 15	17 929.78	+ 4703.24
RM 16	18 015.96	+ 5846.72
RM 17	18 015.96	+ 5846.72
RM 18	18 015.96	+ 5846.72
RM 19	18 015.96	+ 5846.72
RM 20	18 015.96	+ 5846.72

BLOCK CORNER AND APEX POINT CO-ORDINATES

Block	Point	CO-ORDINATES
ACD	15 017.33	+ 4911.00
ACD	15 125.75	+ 5044.02
ACD	15 072.06	+ 4922.84
ACD	15 127.06	+ 4935.64
ACD	15 088.88	+ 4774.58
ACD	15 085.46	+ 4789.81
ACD	15 082.01	+ 4672.04
ACD	15 082.27	+ 4672.04
ACD	15 106.99	+ 4443.73
ACD	15 106.99	+ 4443.73
ACD	15 073.44	+ 3455.93
ACD	15 064.66	+ 3274.86
ACD	15 070.77	+ 3252.77
ACD	15 065.09	+ 2446.45
ACD	15 469.23	+ 2619.43
ACD	15 469.23	+ 2619.43
ACD	15 469.23	+ 2619.43
ACD	15 469.23	+ 2619.43
ACD	15 469.23	+ 2619.43

AREAS

Lot No	Sq. Ft.	Lot No	Sq. Ft.
1	1018	180	1018
2	1018	181	1018
3	1018	182	1018
4	1018	183	1018
5	1018	184	1018
6	1018	185	1018
7	1018	186	1018
8	1018	187	1018
9	1018	188	1018
10	1018	189	1018
11	1018	190	1018



S.G. File 588/14
Compliance No. 74-18
Survey Records 500/51
Degree 59 FT 74
Tracing 2170
Regist 106

95/1952
6/10/1952

56,349/1955
3576/1
16/1/1952

EST. No.	Block	Reg. No.
F.P.	64	11/55
F.P.	64	11/55

GENERAL PLAN

COMPRISING 4 SHEETS

GLENASHLEY TOWNSHIP

COUNTY OF VICTORIA PROVINCE OF NATAL

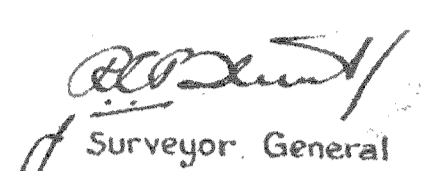
Reg. Div. **FU** SCALE 1:1250

OFFICE COPY

S.G. No 4204/51

GENERAL PLAN No. III x 13

Approved



Surveyor General
27-5-1952

SECT. ANALYSIS	NO. SHEETS	NO. PAGES
A-T	37/1951	
A-S	52/1951	



BLOCK CORNER AND APEX POINT CO-ORDINATES				
Block	Corner	Coordinates	Block	
ADK	ADK	12884.88 + 5190.19	AMG	17114.45 + 3940.37
ADL	ADL	12884.88 + 5190.19	AMH	17114.45 + 3940.37
ADM	ADM	12884.88 + 5190.19	AMI	17114.45 + 3940.37
ADN	ADN	12884.88 + 5190.19	AMJ	17114.45 + 3940.37
ADO	ADO	12884.88 + 5190.19	AMK	17114.45 + 3940.37
ADP	ADP	12884.88 + 5190.19	AML	17114.45 + 3940.37
ADQ	ADQ	12884.88 + 5190.19	AMM	17114.45 + 3940.37
ADR	ADR	12884.88 + 5190.19	AMN	17114.45 + 3940.37
ADS	ADS	12884.88 + 5190.19	AMO	17114.45 + 3940.37
ADT	ADT	12884.88 + 5190.19	AMP	17114.45 + 3940.37
ADU	ADU	12884.88 + 5190.19	AMQ	17114.45 + 3940.37
ADV	ADV	12884.88 + 5190.19	AMR	17114.45 + 3940.37
ADW	ADW	12884.88 + 5190.19	AMS	17114.45 + 3940.37
ADX	ADX	12884.88 + 5190.19	AMT	17114.45 + 3940.37

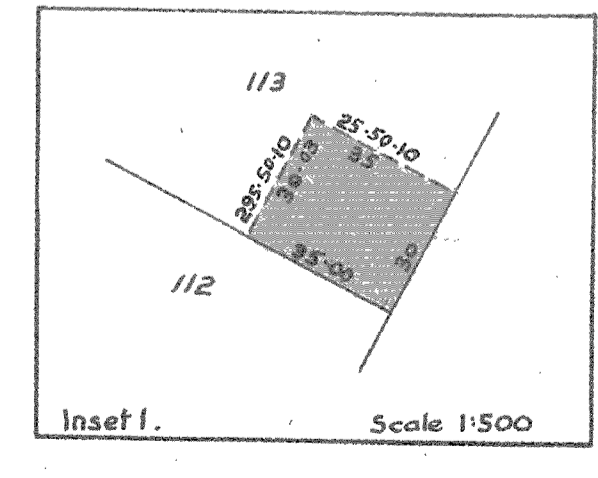
AREAS		
LOTS NO.	SQUARE FEET	Sq. Ft.
86-113	10 890	1012
116	7 092	679
118-125	10 890	1012
136	10 910	1014
144	14 708	1388
145-148	10 890	1012
161	10 924	1016
162-177	10 890	1012
308	5 190	492
309	3 019	286
310	10 890	1012
311	11 780	1116
315-360	10 890	1012
361-383	10 890	1012
384-454	12 239	1146
805	18 007	1702
806	11 011	1051

837
Lots 18 40 113 384 479 646 and 733 are each subject to an Electricity Transformer Sub-Station Servitude as shown on this plan.

Lots 604-605-606 and 607 are each subject to a Sewer and Drainage Servitude 20' wide as shown.

The beacons of each lot represented on this plan are in accordance with regulation and have been placed under my supervision and January 1952. Surveyed in April 1950 - May 1951 by me.

G. Williams
Land Surveyor



Block corners where cut are set back 15 English Feet from the intersection of the street lines unless otherwise shown.

S.G. File 688/14
Survey Records 500/51
Compilation 59 FU 7A-2A
Tracing 2170
REGISTER 106 GP-5 1952

Lot Numbers
Registered
Register No 106

