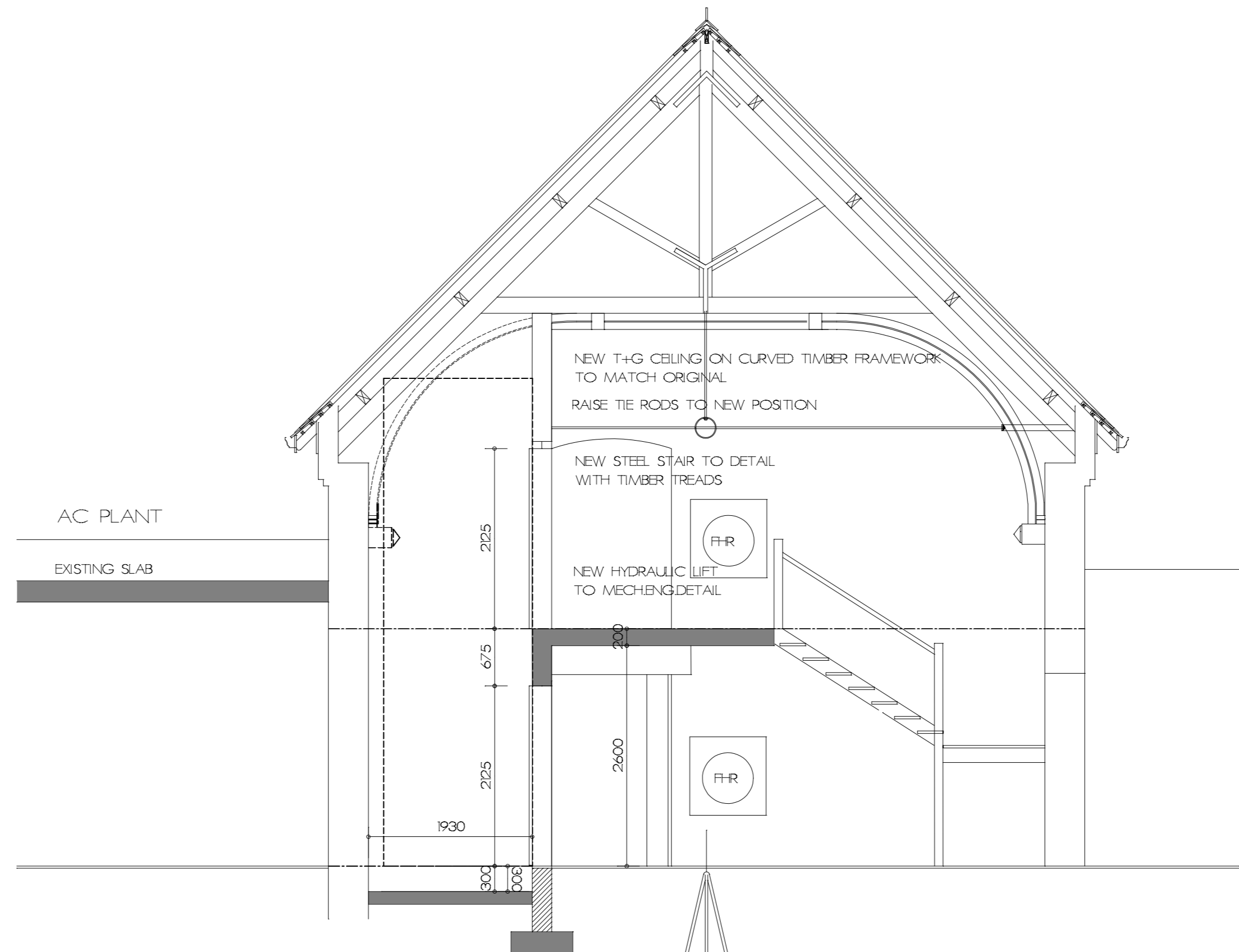
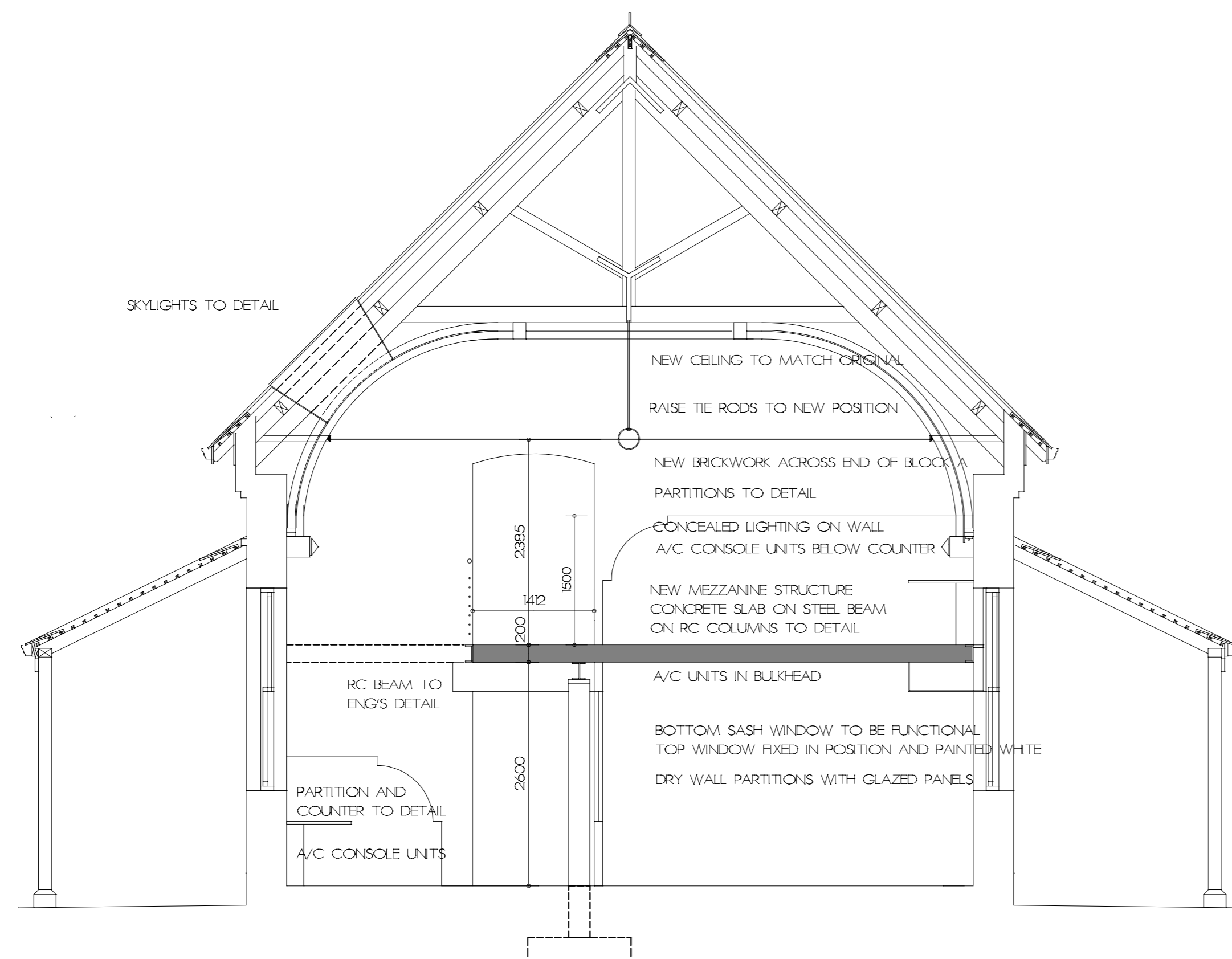


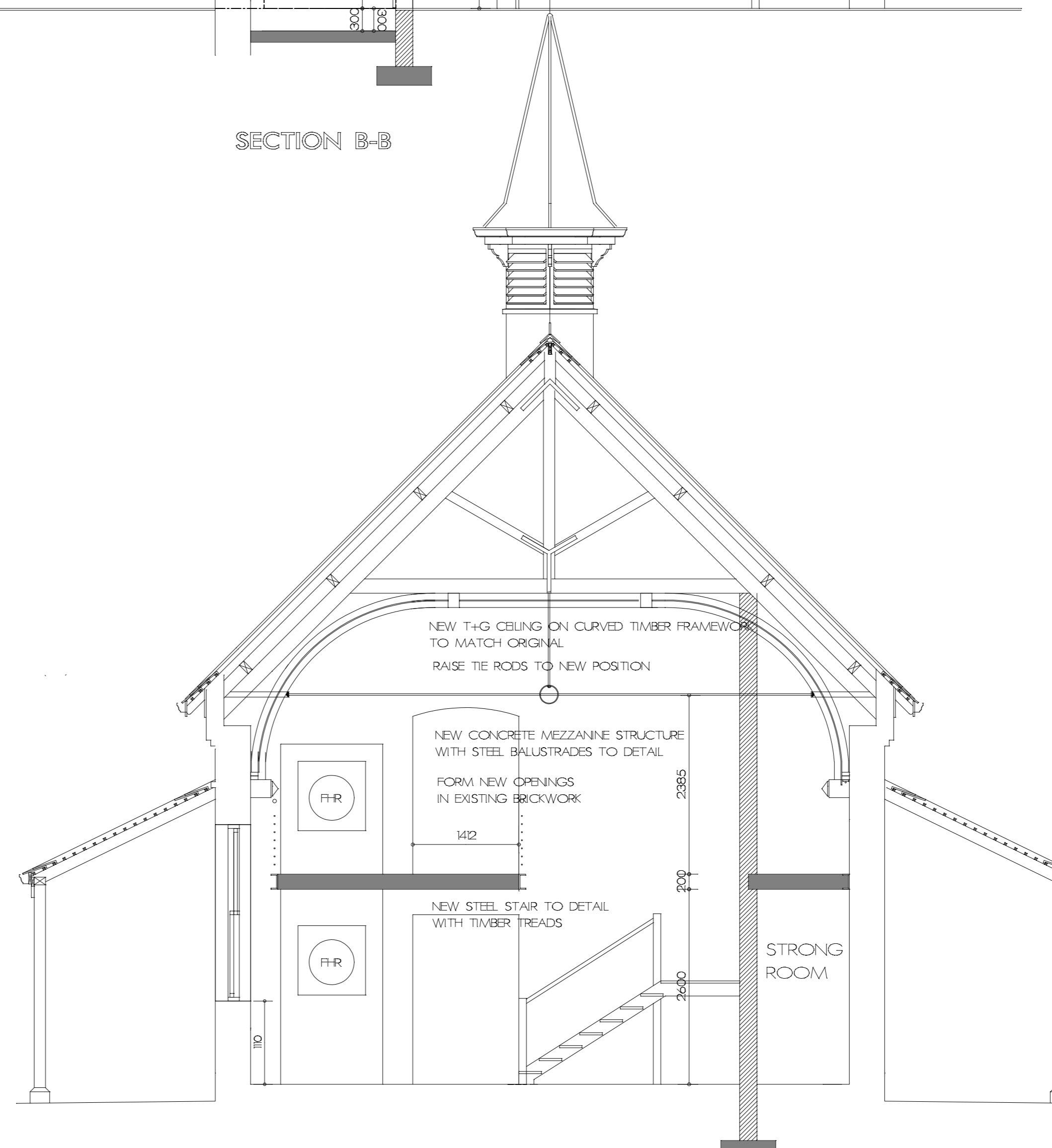
SECTION A-A



SECTION B-B



SECTION C-C



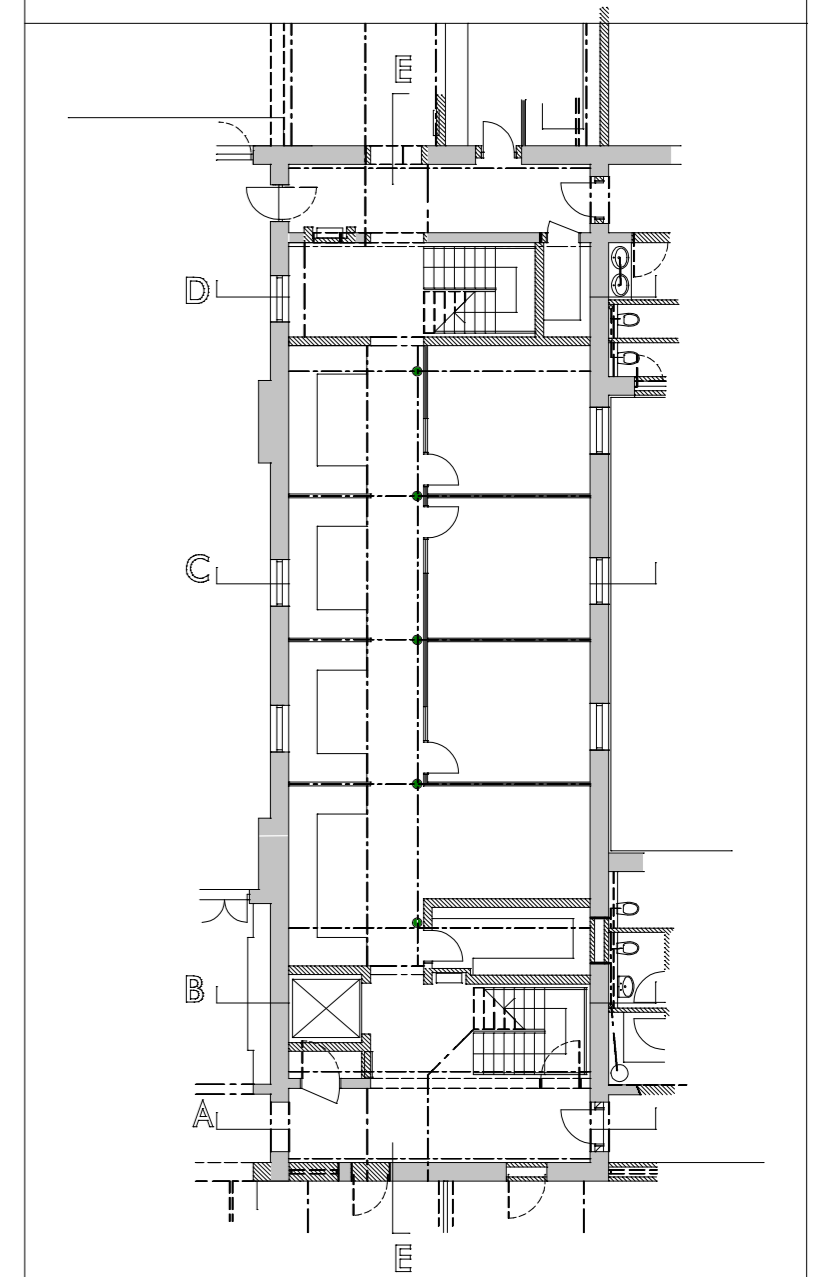
SECTION D-D

Required Dept. of Health Signatures

FACILITY MANAGER .....

DISTRICT MANAGER .....

AREA MANAGER .....



NO : DATE : BY : DESCRIPTION :

REVISIONS:

Checked by Consultant

Name

signature ..... date

Consultant

Architect

GRICE BELLARS, Architects  
211 Hoosen Haffjee St. PMB  
033 394 1785



PROVINCE OF KWAZULU-NATAL



Project  
CONVERSION OF BOYS MODEL SCHOOL  
TO OFFICES FOR DEPT. OF HEALTH

Drawing Title  
WORKING DRAWING  
1:50 SECTIONS - BLOCK A

Scale 1:50 Date DEC 2012 Drawn NCG

Consultant Drawing Number BM-WD-DO1 Revision B

DOW Drawing Number WIMS NO 052393/ Revision

Stamped by Plans Approval Committee