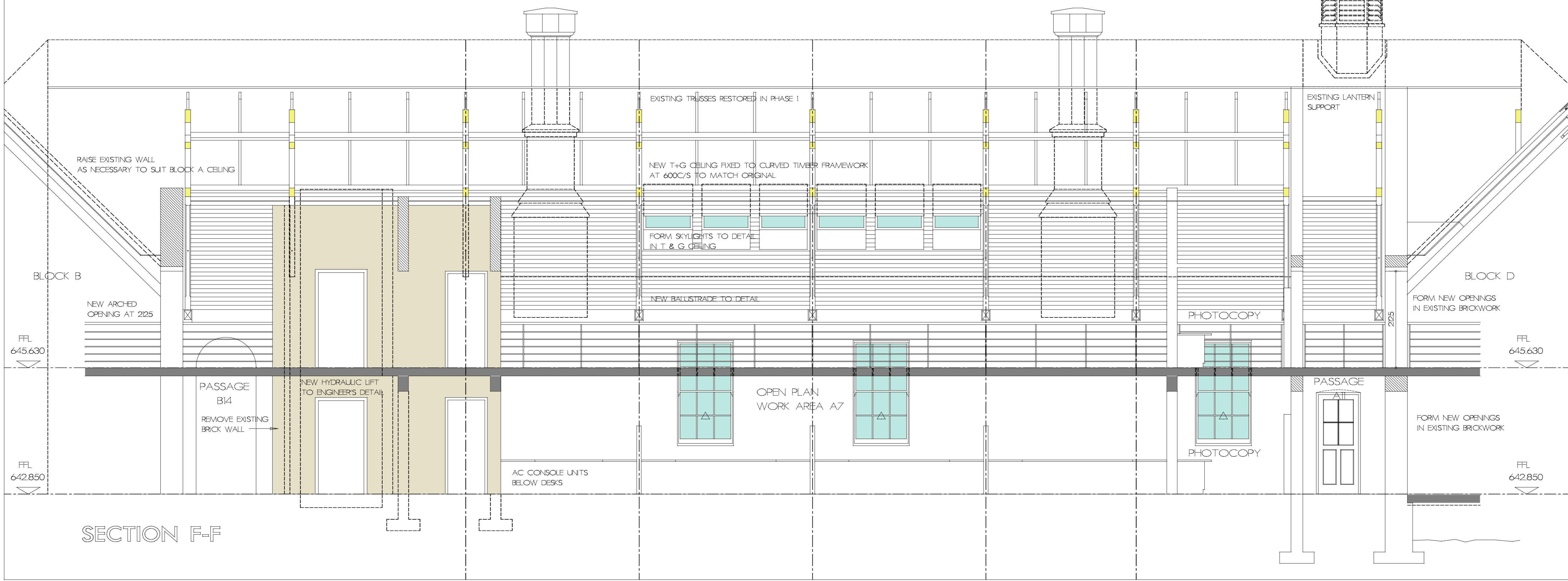
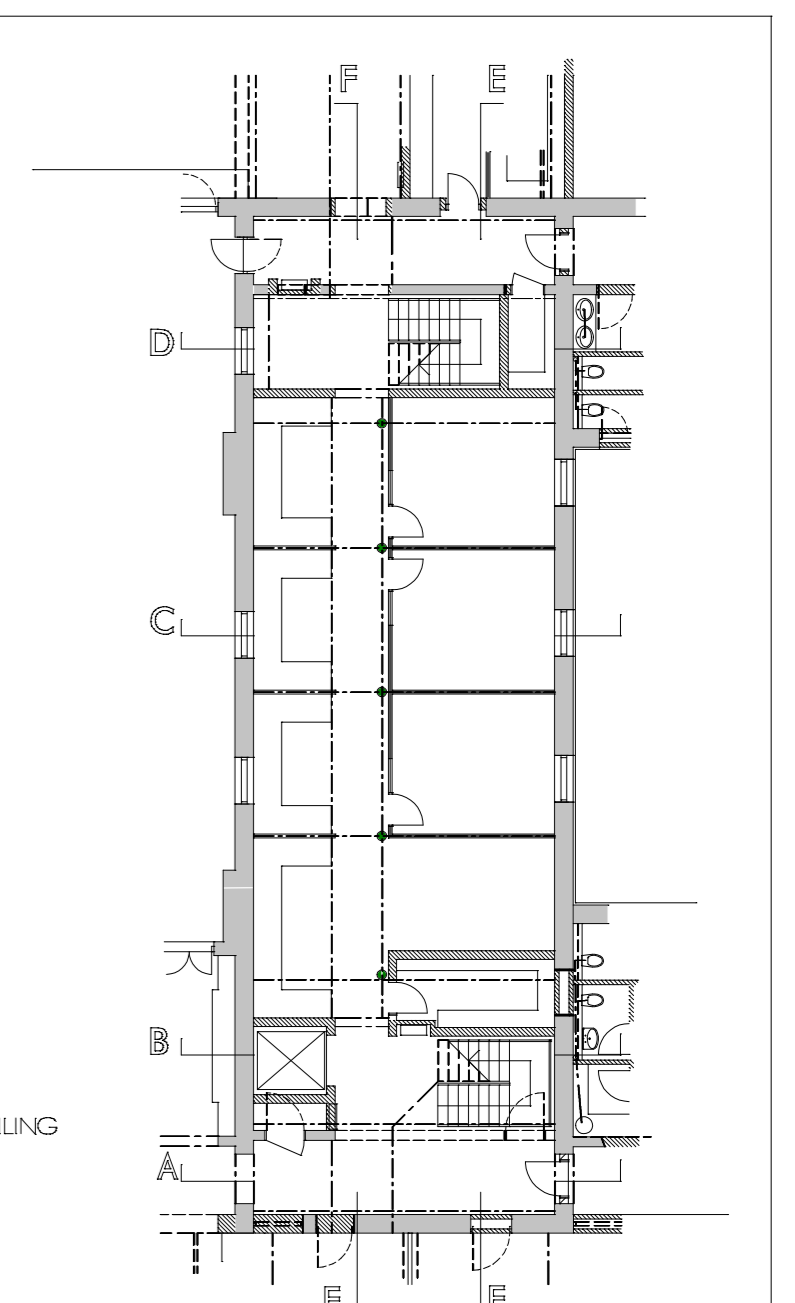


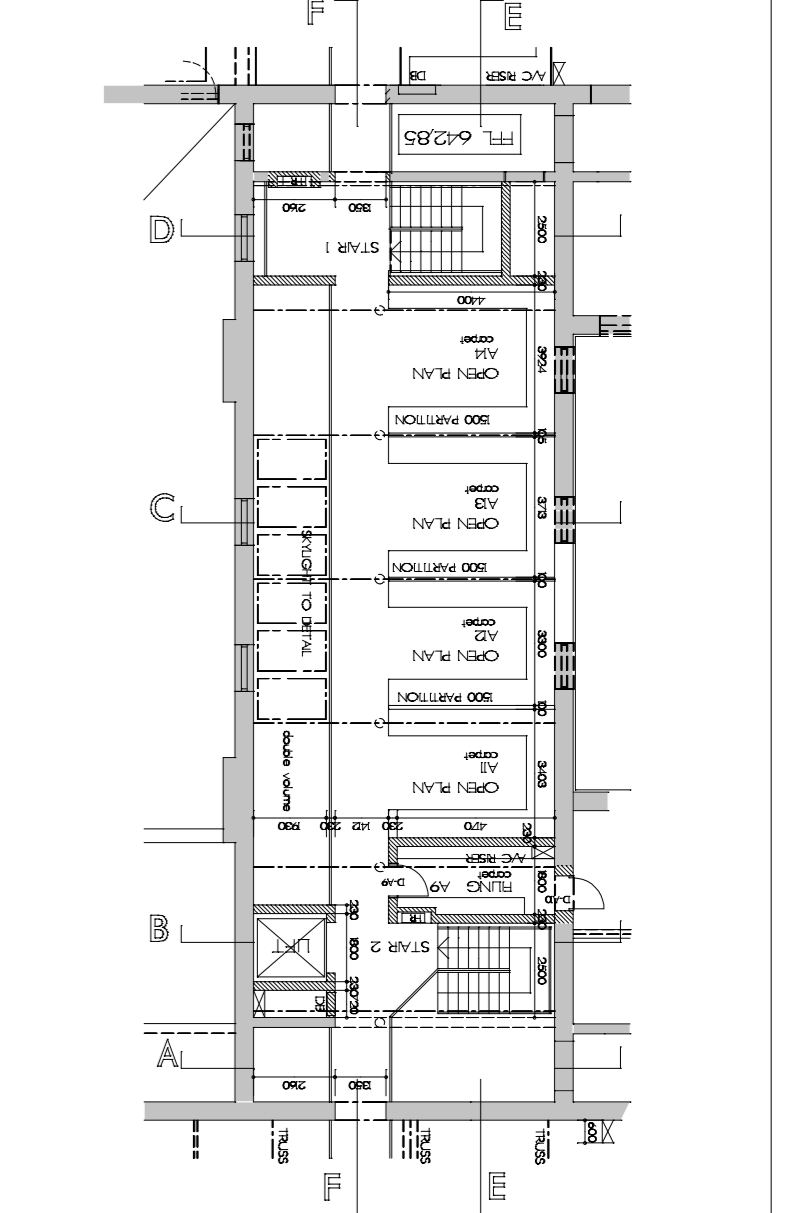
SECTION E-E



SECTION F-F



GROUND FLOOR



FIRST FLOOR

Architect
GRICE BELLARS, Architects
 211 Hoosen Haffjee St. PMB
 033 394 1785



PROVINCE OF KWAZULU-NATAL
DEPARTMENT OF PUBLIC WORKS
 HEAD: WORKS

Project
CONVERSION OF BOYS MODEL SCHOOL TO OFFICES FOR DEPT. OF HEALTH

Drawing Title
WORKING DRAWING LONGITUDINAL SECTIONS - BLOCK A

Scale 1: 50	Date APR 2013	Drawn NCG
Consultant Drawing Number BM-WD-D04	Revision -	Revision -
DOW Drawing Number WIMS NO 052393/	Revision	
Stamped by Plans Approval Committee		