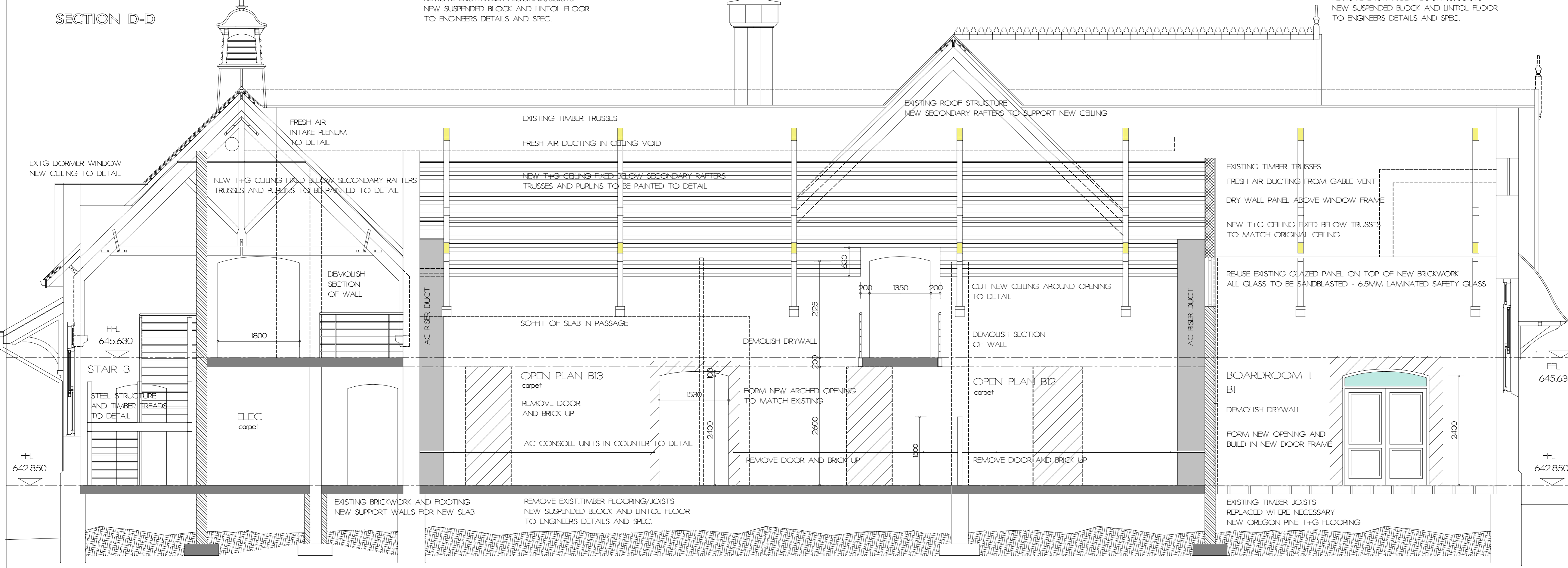
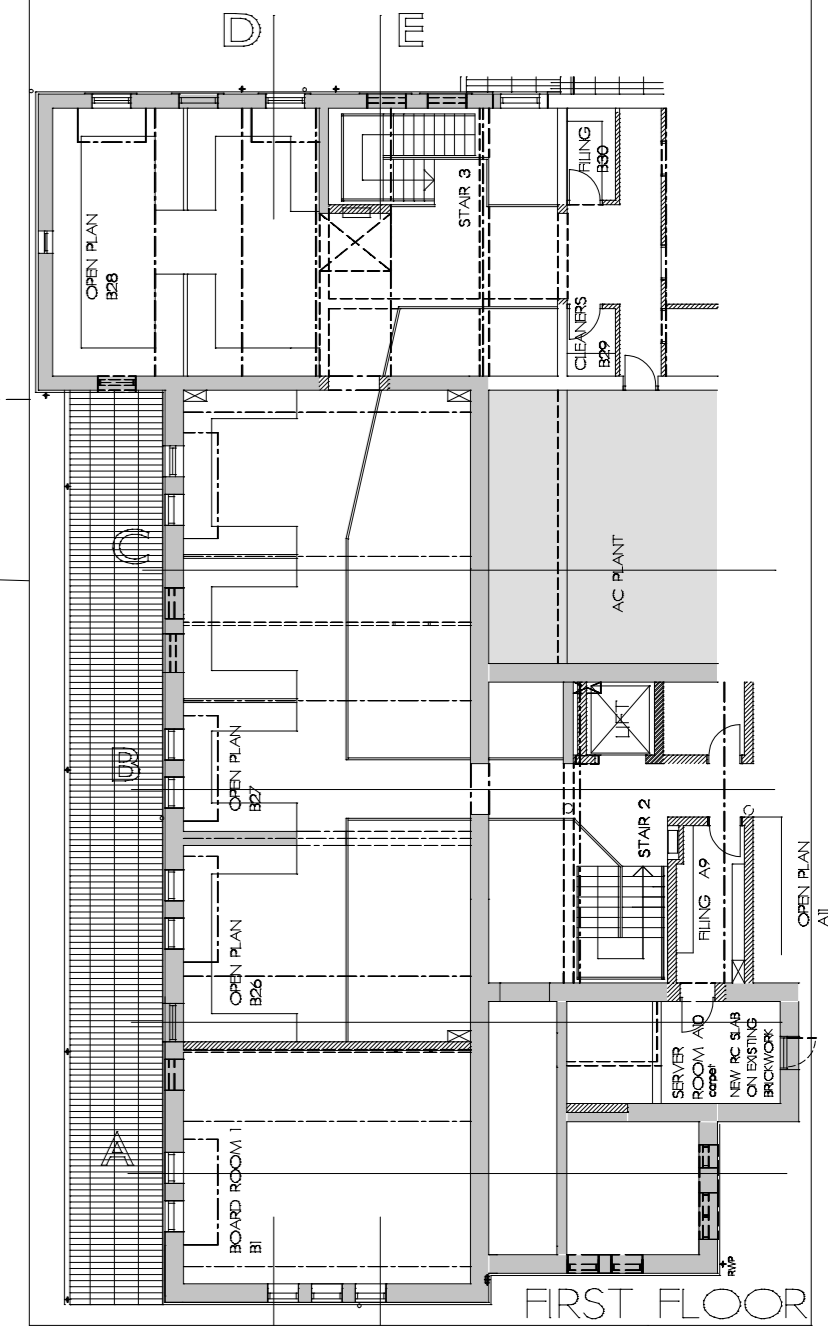
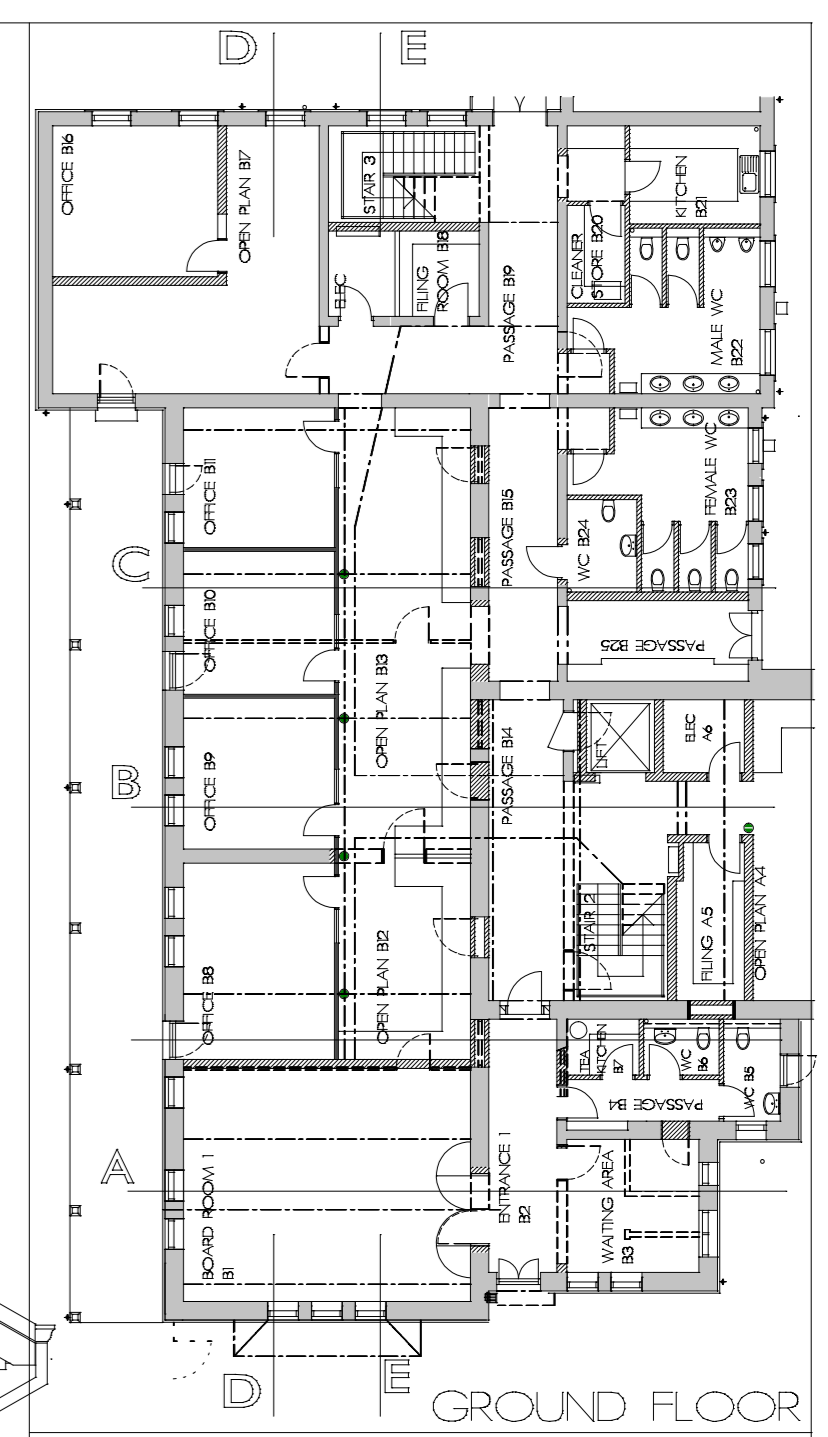




SECTION D-D



SECTION E-E



Architect **GRICE BELLARS, Architects**  
 211 Hoosen Haffeejee St. PMB  
 033 394 1785



Project  
**CONVERSION OF BOYS MODEL SCHOOL  
 TO OFFICES FOR DEPT. OF HEALTH**

Drawing Title  
**WORKING DRAWING  
 LONGITUDINAL SECTIONS - BLOCK B**

Scale 1:50	Date APR 2013	Drawn NGC
---------------	------------------	--------------

Consultant Drawing Number BM-WD-005	Revision -
--	---------------

DOW Drawing Number WIMS NO 052393/	Revision -
---------------------------------------	---------------

Stamped by Plans Approval Committee