

**HERITAGE SURVEY OF THE OFFICE PARK ERF 1874,  
STUTTERHEIM, EASTERN CAPE**

**FOR COASTAL ENVIRONMENTAL SERVICES**

**DATE: 31 MARCH 2013**

**By Gavin Anderson**

**Umlando: Archaeological Surveys and Heritage  
Management**

**PO Box 102532, Meerensee, 3901**

**Phone/fax: 035-7531785 Fax: 0865445631**

**Cell: 0836585362**



## TABLE OF CONTENT

INTRODUCTION .....	3
NATIONAL HERITAGE RESOURCES ACT OF 1999 .....	7
METHOD .....	9
Defining significance .....	10
RESULTS .....	13
DESKTOP STUDY .....	13
FIELD SURVEY .....	17
BUILDINGS .....	17
SETTLEMENTS .....	17
MANAGEMENT PLAN .....	20
CONCLUSION .....	20
REFERENCES .....	20

## TABLE OF FIGURES

FIG. 1 GENERAL LOCATION OF THE PROPOSED DEVELOPMENT .....	4
FIG. 2: AERIAL OVERVIEW OF THE PROPOSED DEVELOPMENT .....	5
FIG. 3: TOPOGRAPHICAL MAP OF THE PROPOSED DEVELOPMENT .....	6
TABLE 1: SAHRA GRADINGS FOR HERITAGE SITES .....	12
FIG. 4: LOCATION OF KNOWN HERITAGE SITES IN STUTTERHEIM TOWN .....	14
FIG. 5: LOCATION OF SETTLEMENTS IN 1959 .....	15
FIG. 6: LOCATION OF 1959 SETTLEMENTS IN RELATION TO RECENT AERIAL IMAGERY .....	16
TABLE 2: LOCATION OF SITES NOTED ON THE 1959 TOPOGRAPHICAL MAP .....	17
FIG. 7: MODERN BUILDINGS AT THE PROPOSED SITE .....	18
FIG. 8: VIEW OF AREA OF 1959 SETTLEMENTS .....	19

## **INTRODUCTION**

Amathole District Municipality is proposing to develop an approximately 3ha Office Park situated on Erf 1874 and surrounding commonage at Stutterheim, in the Eastern Cape. Figures 1 – 3 show the locality of the area and the site.

The current site is the location of disused government buildings and an ambulance service. There appears to be recent temporary contractor housing on the southeastern boundary.

Umlando was contracted to undertake a heritage survey of the proposed development.

No heritage sites were observed during the survey; however, the desktop noted two sensitive areas in the assessment area.

FIG. 1 GENERAL LOCATION OF THE PROPOSED DEVELOPMENT

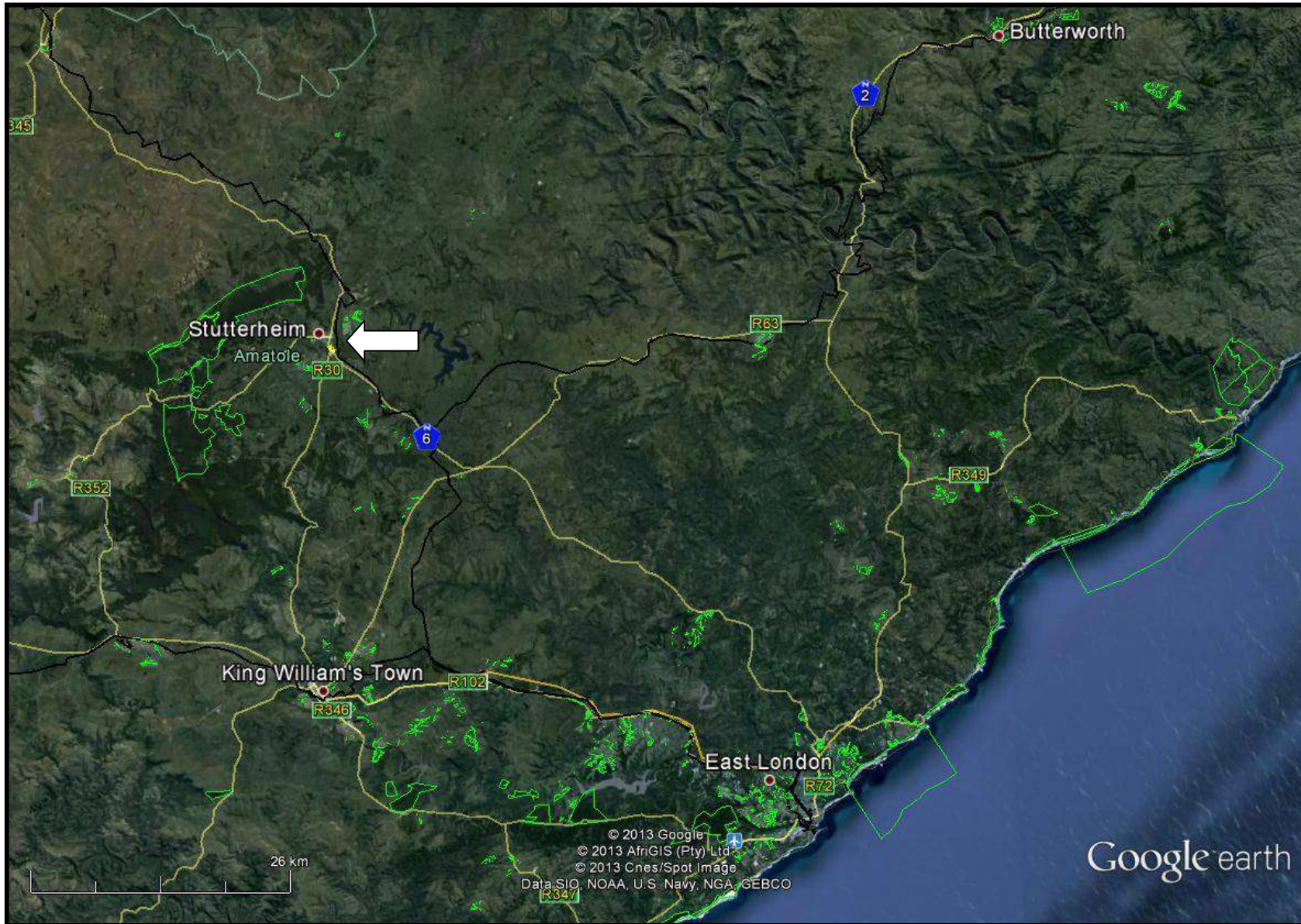
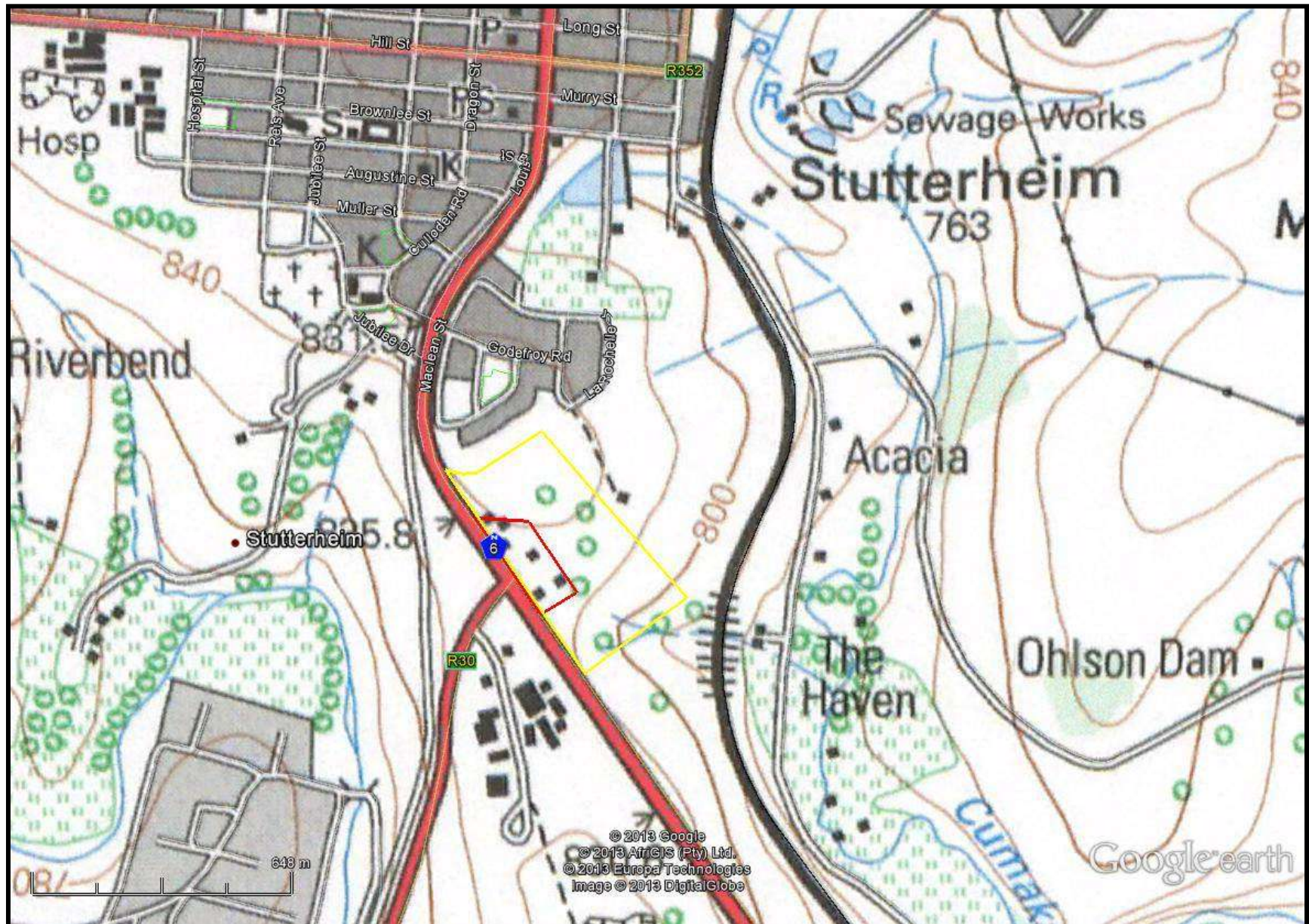


FIG. 2: AERIAL OVERVIEW OF THE PROPOSED DEVELOPMENT<sup>1</sup>



<sup>1</sup> Red polygon = planned site; Yellow polygon = assessment site

FIG. 3: TOPOGRAPHICAL MAP OF THE PROPOSED DEVELOPMENT



## **NATIONAL HERITAGE RESOURCES ACT OF 1999**

The National Heritage Resources Act of 1999 (pp 12-14) protects a variety of heritage resources. These resources are defined as follows:

1. “For the purposes of this Act, those heritage resources of South Africa which are of cultural significance or other special value for the present community and for future generations must be considered part of the national estate and fall within the sphere of operations of heritage resources authorities.
2. Without limiting the generality of subsection (1), the national estate may include—
  - 2.1. Places, buildings, structures and equipment of cultural significance;
  - 2.2. Places to which oral traditions are attached or which are associated with living heritage;
  - 2.3. Historical settlements and townscapes;
  - 2.4. Landscapes and natural features of cultural significance;
  - 2.5. Geological sites of scientific or cultural importance;
  - 2.6. Archaeological and palaeontological sites;
  - 2.7. Graves and burial grounds, including—
    - 2.7.1. Ancestral graves;
    - 2.7.2. Royal graves and graves of traditional leaders;
    - 2.7.3. Graves of victims of conflict;
    - 2.7.4. Graves of individuals designated by the Minister by notice in the Gazette;
    - 2.7.5. Historical graves and cemeteries; and
    - 2.7.6. Other human remains which are not covered in terms of the Human Tissue Act, 1983 (Act No. 65 of 1983);
3. Sites of significance relating to the history of slavery in South Africa;
  - 3.1. Movable objects, including—

4. Objects recovered from the soil or waters of South Africa, including archaeological and palaeontological objects and material, meteorites and rare geological specimens;
  - 4.1. Objects to which oral traditions are attached or which are associated with living heritage;
  - 4.2. Ethnographic art and objects;
  - 4.3. Military objects;
  - 4.4. objects of decorative or fine art;
  - 4.5. Objects of scientific or technological interest; and
  - 4.6. books, records, documents, photographic positives and negatives, graphic, film or video material or sound recordings, excluding those that are public records as defined in section 1(xiv) of the National Archives of South Africa Act, 1996 (Act No. 43 of 1996).
5. Without limiting the generality of subsections (1) and (2), a place or object is to be considered part of the national estate if it has cultural significance or other special value because of—
  - 5.1. Its importance in the community, or pattern of South Africa's history;
  - 5.2. Its possession of uncommon, rare or endangered aspects of South Africa's natural or cultural heritage;
  - 5.3. Its potential to yield information that will contribute to an understanding of South Africa's natural or cultural heritage;
  - 5.4. Its importance in demonstrating the principal characteristics of a particular class of South Africa's natural or cultural places or objects;
  - 5.5. Its importance in exhibiting particular aesthetic characteristics valued by a community or cultural group;
  - 5.6. Its importance in demonstrating a high degree of creative or technical achievement at a particular period;
  - 5.7. Its strong or special association with a particular community or cultural group for social, cultural or spiritual reasons;
  - 5.8. Its strong or special association with the life or work of a person, group or organisation of importance in the history of South Africa; and



5.9. sites of significance relating to the history of slavery in South Africa”

## **METHOD**

The method for Heritage assessment consists of several steps.

The first step forms part of the desktop assessment. Here we would consult the database that has been collated by Umlando. This databases contains archaeological site locations and basic information from several provinces (information from Umlando surveys and some colleagues), most of the national and provincial monuments and battlefields in Southern Africa (<http://www.vuvuzela.com/googleearth/monuments.html>) and cemeteries in southern Africa (information supplied by the Genealogical Society of Southern Africa). We use 1<sup>st</sup> and 2<sup>nd</sup> edition 1:50 000 topographical and 1937 aerial photographs where available, to assist in general location and dating of buildings and/or graves. The database is in Google Earth format and thus used as a quick reference when undertaking desktop studies. Where required we would consult with a local data recording centre, however these tend to be fragmented between different institutions and areas and thus difficult to access at times. We also consult with an historical architect, palaeontologist, and an historian where necessary.

The survey results will define the significance of each recorded site, as well as a management plan.

All sites are grouped according to low, medium, and high significance for the purpose of this report. Sites of low significance have no diagnostic artefacts or features. Sites of medium significance have diagnostic artefacts or features and these sites tend to be sampled. Sampling includes the collection of artefacts for future analysis. All diagnostic pottery, such as rims, lips, and decorated sherds are sampled, while bone, stone, and shell are mostly noted. Sampling usually

occurs on most sites. Sites of high significance are excavated and/or extensively sampled. Those sites that are extensively sampled have high research potential, yet poor preservation of features.

### **Defining significance**

Heritage sites vary according to significance and several different criteria relate to each type of site. However, there are several criteria that allow for a general significance rating of archaeological sites.

These criteria are:

#### **1. State of preservation of:**

- 1.1. Organic remains:
  - 1.1.1. Faunal
  - 1.1.2. Botanical
- 1.2. Rock art
- 1.3. Walling
- 1.4. Presence of a cultural deposit
- 1.5. Features:
  - 1.5.1. Ash Features
  - 1.5.2. Graves
  - 1.5.3. Middens
  - 1.5.4. Cattle byres
  - 1.5.5. Bedding and ash complexes

#### **2. Spatial arrangements:**

- 2.1. Internal housing arrangements
- 2.2. Intra-site settlement patterns
- 2.3. Inter-site settlement patterns

#### **3. Features of the site:**

- 3.1. Are there any unusual, unique or rare artefacts or images at the site?

3.2. Is it a type site?

3.3. Does the site have a very good example of a specific time period, feature, or artefact?

**4. Research:**

4.1. Providing information on current research projects

4.2. Salvaging information for potential future research projects

**5. Inter- and intra-site variability**

5.1. Can this particular site yield information regarding intra-site variability, i.e. spatial relationships between various features and artefacts?

5.2. Can this particular site yield information about a community's social relationships within itself, or between other communities?

**6. Archaeological Experience:**

6.1. The personal experience and expertise of the CRM practitioner should not be ignored. Experience can indicate sites that have potentially significant aspects, but need to be tested prior to any conclusions.

**7. Educational:**

7.1. Does the site have the potential to be used as an educational instrument?

7.2. Does the site have the potential to become a tourist attraction?

7.3. The educational value of a site can only be fully determined after initial test-pit excavations and/or full excavations.

**8. Other Heritage Significance:**

8.1. Palaeontological sites

8.2. Historical buildings

8.3. Battlefields and general Anglo-Zulu and Anglo-Boer sites

8.4. Graves and/or community cemeteries

8.5. Living Heritage Sites

8.6. Cultural Landscapes, that includes old trees, hills, mountains, rivers, etc related to cultural or historical experiences.

The more a site can fulfill the above criteria, the more significant it becomes. Test-pit excavations are used to test the full potential of an archaeological deposit. This occurs in Phase 2. These test-pit excavations may require further excavations if the site is of significance (Phase 3). Sites may also be mapped and/or have artefacts sampled as a form of mitigation. Sampling normally occurs when the artefacts may be good examples of their type, but are not in a primary archaeological context. Mapping records the spatial relationship between features and artefacts.

**TABLE 1: SAHRA GRADINGS FOR HERITAGE SITES**

<b>SITE SIGNIFICANCE</b>	<b>FIELD RATING</b>	<b>GRADE</b>	<b>RECOMMENDED MITIGATION</b>
<b>High Significance</b>	National Significance	Grade 1	Site conservation / Site development
<b>High Significance</b>	Provincial Significance	Grade 2	Site conservation / Site development
<b>High Significance</b>	Local Significance	Grade 3A / 3B	
<b>High / Medium Significance</b>	Generally Protected A		Site conservation or mitigation prior to development / destruction
<b>Medium Significance</b>	Generally Protected B		Site conservation or mitigation / test excavation / systematic sampling / monitoring prior to or during development / destruction
<b>Low Significance</b>	Generally Protected C		On-site sampling monitoring or no archaeological mitigation required prior to or during development / destruction

## RESULTS

### DESKTOP STUDY

The desktop study consisted of analysing various maps for evidence of prior habitation in the study area, as well as for previous archaeological surveys, memorials, buildings and cemeteries

There has only been one HIA study in the Stutterheim area (van Ryneveldt 2011). This study occurred to the north of the study area for the Cenyu Village housing development. The study noted that Stutterheim was founded in 1859 by Baron Richard von Stutterheim. The Anglo-German Legion was originally based here, and formed the basis of the town. The first 'black location' was founded in 1959 in the Cenyu Hill area (Wotshela 2009, in van Ryneveld 2011). The study noted a few historical buildings and cemeteries. Other HIA studies have been undertaken in the general area, but these occur more than 30km from the site.

There are no known national monuments, cemeteries, archaeological sites and historical buildings in the study area, although several occur in the town and its surrounds. These are 1.5 – 4km away from the study area.

The 1959 1:50 000 topographical map (3227CB Stutterheim) indicates that there are no buildings in the study area. However, there are two settlements and one built feature, in the general assessment area (fig. 5 – 6). The 1956 map indicates a small farming area, probably for domestic use, and the outline of this is visible in recent aerial photos. The co-ordinates for these are given in Table 2.

FIG. 4: LOCATION OF KNOWN HERITAGE SITES IN STUTTERHEIM TOWN

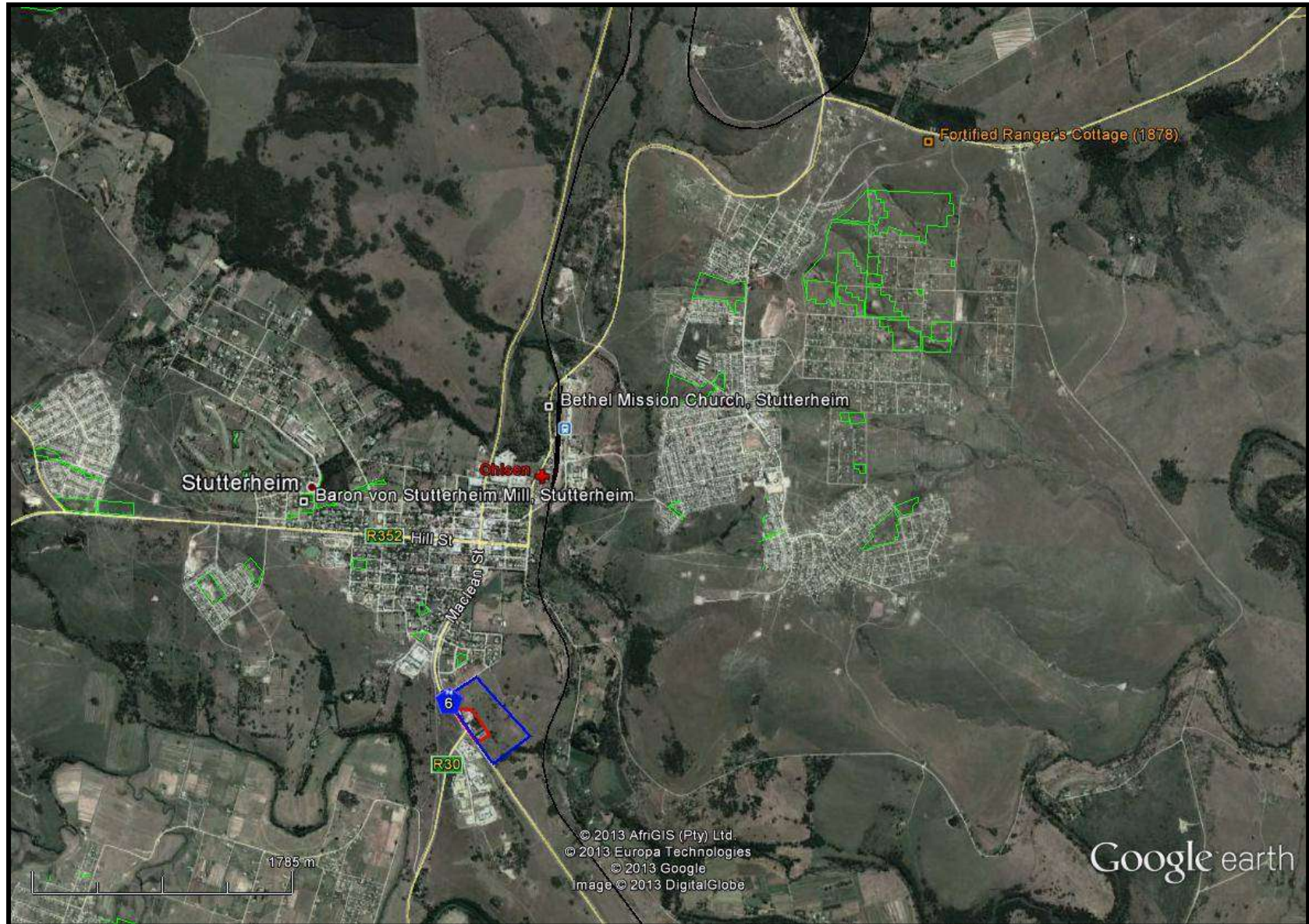


FIG. 5: LOCATION OF SETTLEMENTS IN 1959

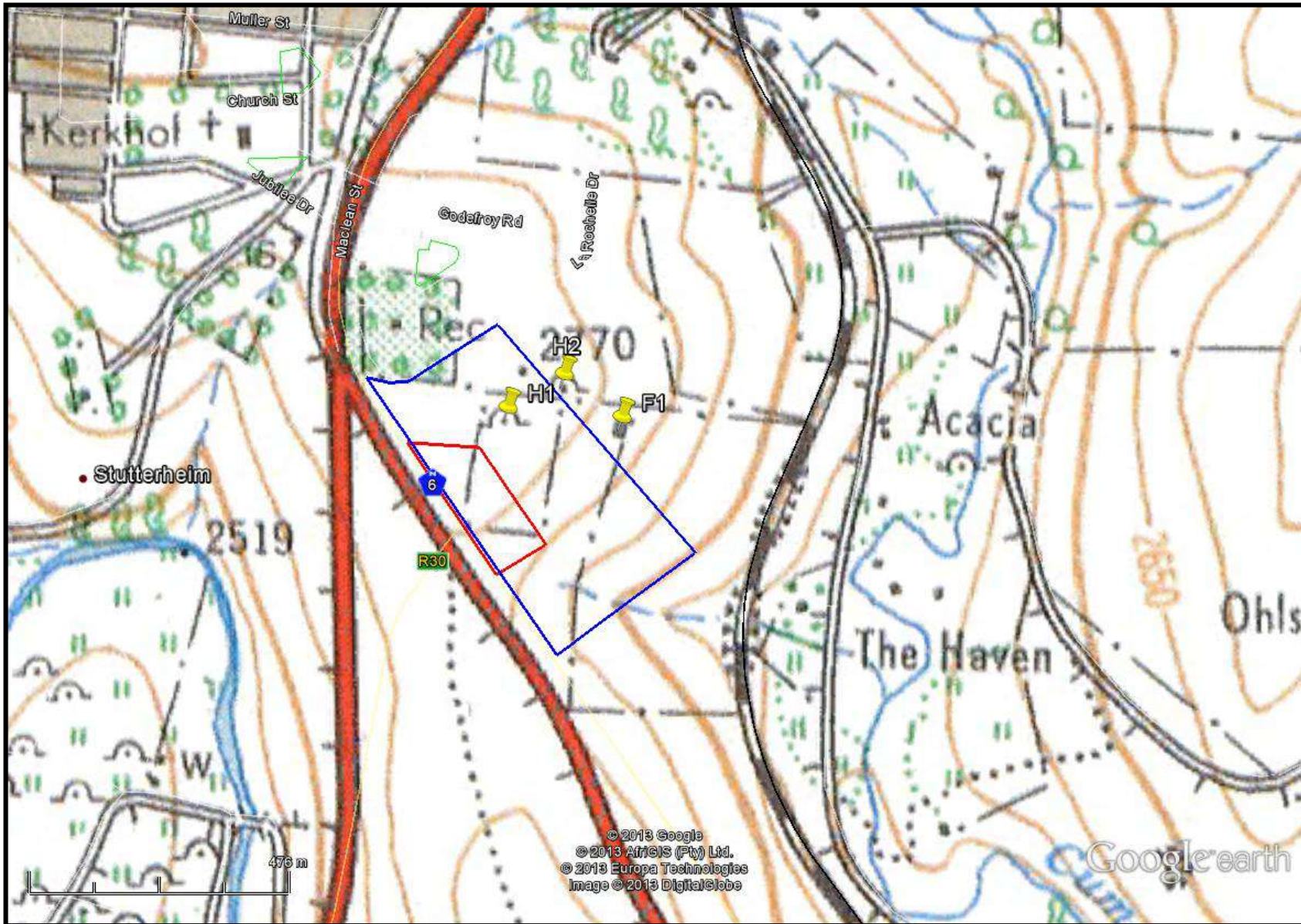
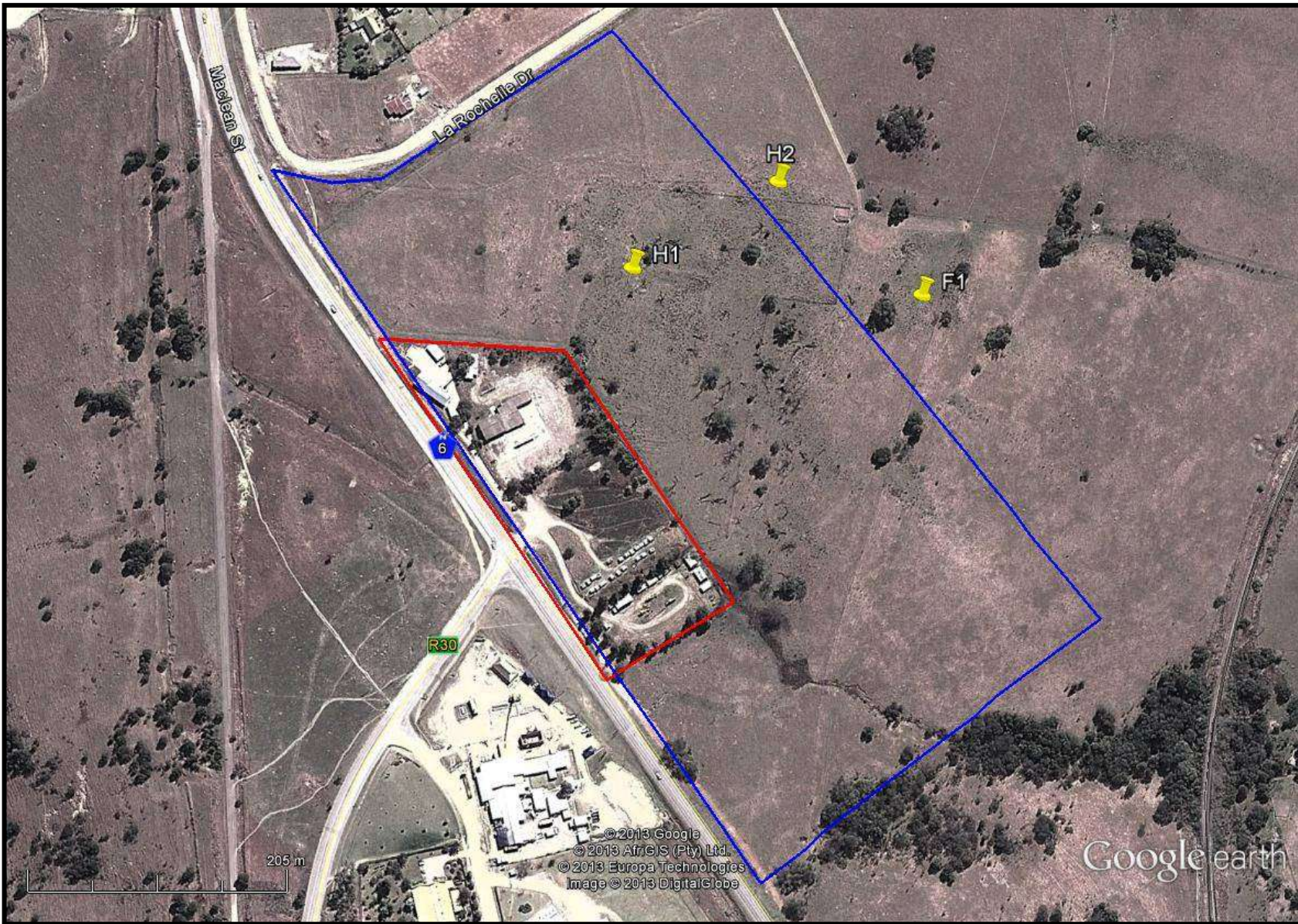


FIG. 6: LOCATION OF 1959 SETTLEMENTS IN RELATION TO RECENT AERIAL IMAGERY





**TABLE 2: LOCATION OF SITES NOTED ON THE 1959 TOPOGRAPHICAL MAP**

<b>Name</b>	<b>Description</b>	<b>South</b>	<b>East</b>
<b>H1</b>	Settlement	32°34'47.52"	27°25'43.47"
<b>H2</b>	Settlement	32°34'45.56"	27°25'47.34"
<b>F1</b>	Feature	32°34'48.01"	27°25'51.33"

## **FIELD SURVEY**

The field survey was undertaken in March 2013. No archaeological sites were noted.

### **BUILDINGS**

The government buildings (fig. 7) are younger than 60 years, as they are not on the 1959 maps. The buildings are not protected by the NHRA.

Significance: The site is of low significance.

Mitigation: No further mitigation is required.

SAHRA Rating: N/A

### **SETTLEMENTS**

Only one of the two settlements identified on the 1959 topographical map occurs in the assessment area. The feature (F1) is a water trough, and the existing trough does not appear to be old. Both settlements were not visible during the survey, although there was evidence of land disturbance (fig. 8). These settlements pre-date 1959 and may have graves.

Significance: The settlements are of low significance, unless human remains are found.

Mitigation: The area should be noted as being sensitive for possible human remains.

SAHRA Rating: 3C

FIG. 7: MODERN BUILDINGS AT THE PROPOSED SITE



**FIG. 8: VIEW OF AREA OF 1959 SETTLEMENTS**



## **MANAGEMENT PLAN**

The area around the settlements should have a 50m sensitivity zone placed around it. This would allow the area to be sensitised for potential human remains. If human remains are noted during earthmoving activity, then SAHRA and the SAPS need to be informed immediately.

## **CONCLUSION**

A heritage survey was undertaken for the proposed land development in southern Stutterheim, Eastern Cape. No heritage sites were noted in the assessment area. However, two settlements were noted to have existed in the past. These two settlements were not visible during the survey, and they were noted as having potential graves.

No further mitigation is required.

## **REFERENCES**

Van Ryneveld, K. 2011, Infrastructure and Housing Development: Cenyu Village, Stutterheim, Eastern Cape, South Africa. HIA Report To Arcus Gibb.