



# Government Gazette Staatskoerant

REPUBLIC OF SOUTH AFRICA  
REPUBLIEK VAN SUID AFRIKA

Vol. 653

22 November 2019  
November

No. 42849

**PART 1 OF 2**

N.B. The Government Printing Works will not be held responsible for the quality of "Hard Copies" or "Electronic Files" submitted for publication purposes

ISSN 1682-5843



9 771682 584003

42849



**AIDS HELPLINE: 0800-0123-22 Prevention is the cure**

## DEPARTMENT OF ARTS AND CULTURE

NO. 1494

22 NOVEMBER 2019



## SOUTH AFRICAN HERITAGE RESOURCES AGENCY

## DECLARATION OF THE WALTER SISULU SQUARE OF DEDICATION, KLIPTOWN, SOWETO, GAUTENG AS A NATIONAL HERITAGE SITE

By virtue of the powers vested in the South African Heritage Resources Agency, in terms of section 27 (5) of the National Heritage Resources Act (No. 25 of 1999) SAHRA hereby declares the Walter Sisulu Square of Dedication (previously known as Freedom Square) as a National Heritage Site.

**Statement of Significance**

*As the site of the 1955 Congress of the People, the Walter Sisulu Square represents the most representative gathering in the history of South Africa and the democratic approach taken in documenting the vision of ordinary South Africans. The process of drafting the Freedom Charter was the first time in South African history where all South Africans were given an opportunity to voice their dreams and hopes for a future democratic South Africa, irrespective of race, colour, education, language, sex, personal beliefs and organisational affiliation.*

*This process culminated on 25th and 26th June 1955, at the Congress of the People on a dusty field that is now the Walter Sisulu Square of Dedication, to adopt the Freedom Charter. The Freedom Charter further, gave the liberation movement a uniform and coherent vision for a future South Africa and became the basis of the movement. The Constitution of the new post-apartheid democratic South Africa is based on the demands and rights reflected in the Freedom Charter and encapsulates its vision as a goal for a fully integrated and inclusive South African nation.*

**Schedule**

The demarcation of the site is as follows:

Site Name	Erf No / Farm	Province	Nearest Town	Municipality	Survey y Diagram
Walter Sisulu Square of Dedication	Erf 11915 Pimville Zone 9	Gauteng	Kliptown	City of Johannesburg	3944/2055

END

CONSOLIDATED TITLE DIAGRAM

OFFICE COPY

SG No.

3944/2005

Approved

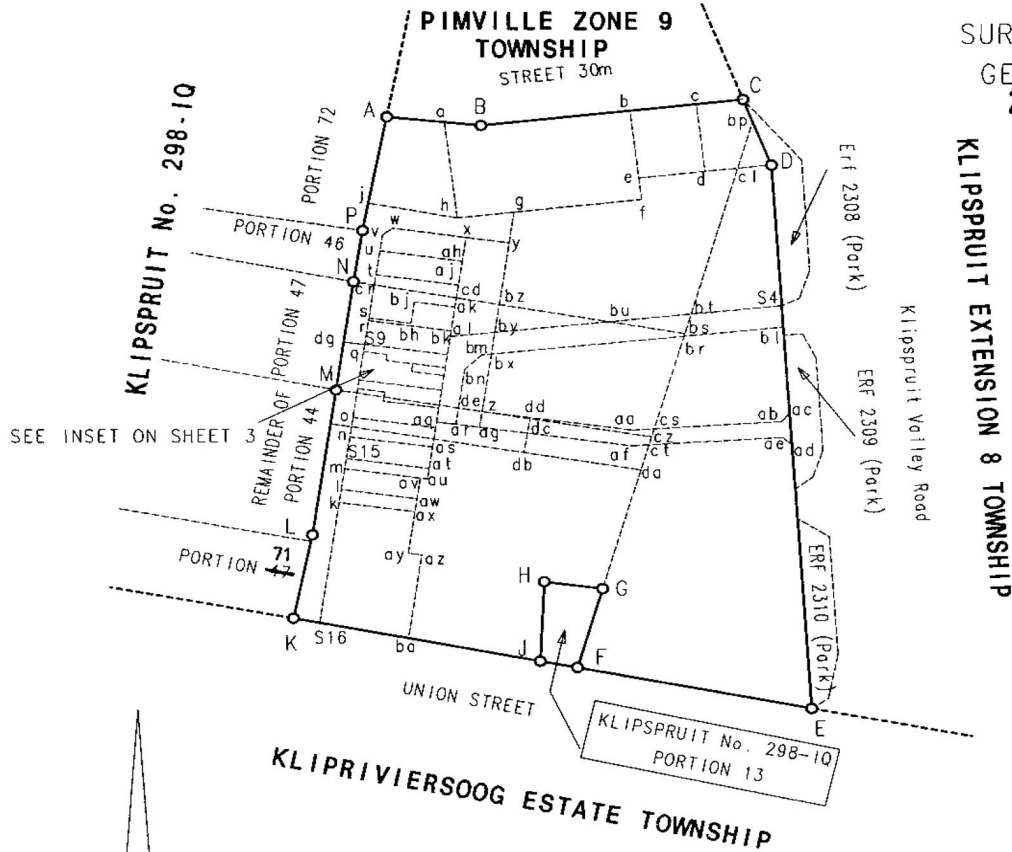


for  
SURVEYOR-  
GENERAL  
2005-06-14

Ord. 15/1986  
Sect. 92

Plan & Certificate

SHEET 1 OF 3 SHEETS



SCALE 1:5000

The figure A B C D E F G H J K L M N P A represents 12,1590 hectares of land being Erf 11915 of the Township of PIMVILLE ZONE 9 (and comprises components as listed on Sheet 2)

Province of Gauteng  
Compiled in February 2005

by me

S N Mohlatlole PLS0999  
Professional Land Surveyor

This diagram is annexed to  
No.  
d.d.  
i.f.o.  
Registrar of deeds: Johannesburg

The original diagrams are as listed on Sheet 2  
Transfer  
Grant  
C.C.T.

File Erven  
S.R. No.  
T.P. 11033  
Comp.: IQNP 32, IQNP 3431  
G.P. S.G. No. 11722/1995