



Government Gazette Staatskoerant

REPUBLIC OF SOUTH AFRICA
REPUBLIEK VAN SUID AFRIKA

Vol. 615

2 September
September 2016

No. 40243

PART 1 OF 2

N.B. The Government Printing Works will not be held responsible for the quality of "Hard Copies" or "Electronic Files" submitted for publication purposes

ISSN 1682-5843



9 771682 584003

40243



AIDS HELPLINE: 0800-0123-22 Prevention is the cure

GOVERNMENT NOTICES • GOEWERMENTSKENNISGEWINGS

DEPARTMENT OF ARTS AND CULTURE

NO. 968

02 SEPTEMBER 2016

DEPARTMENT OF ARTS AND CULTURE**SOUTH AFRICAN HERITAGE RESOURCES AGENCY****DECLARATION OF THE LILIESLEAF FARM AS NATIONAL HERITAGE SITES**

By virtue of the powers vested in the South African Heritage Resources Agency, in terms of section 27 (5) of the National Heritage Resources Act (No. 25 of 1999) SAHRA hereby declares Liliesleaf Farm, Erf 357 Rivonia Extension as a National Heritage Site

Statement of Significance

Liliesleaf Farm represents two pivotal points in South Africa's History and the Liberation Struggle. The purchase of the property by the South African Communist Party (SACP) was to serve as both the organisation's headquarters and a "safe house" for activists. This purchase coincided with the shift within the national liberation movement, from passive resistance to armed struggle and the formation of uMkhonto we Sizwe (MK). Liliesleaf subsequently became the headquarters of MK and a crucible for the Liberation Struggle. It was at this property where MK launched operation O Mayibuye leading to the reaction by the Apartheid regime in the form of the Rivonia Arrests (in July 1963) and the Rivonia Trial (which in turn is an important moment in our history). The trial resulted in the conviction and life imprisonment of prominent struggle leaders such as Nelson Mandela, Walter Sisulu, Govan Mbeki, Ahmed Kathrada, Denis Goldberg, Raymond Mhlaba, Elias Motsoeledi and Andrew Mlangeni."

Schedule

The demarcation of Liliesleaf Farm is as follows:

Site Name	Erf No / Farm	Province	Town	Municipality	Survey Diagram	Figure	Deed
Liliesleaf Farm	357 – Rivonia Extension 1	Gauteng	Johannesburg	City of Johannesburg	2445/2010	AadehFGHA	T 013687 07

CONSOLIDATION DIAGRAM

COMPONENTS:

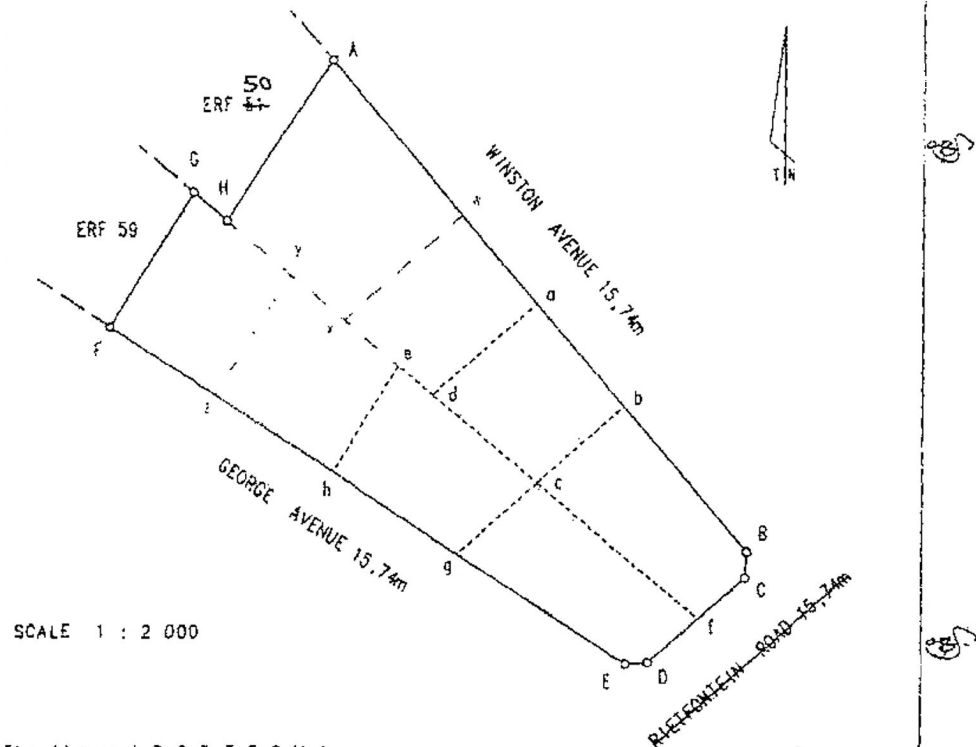
- 1 The figure A,a,d,e,h,F,G,H,A represents Erf 357, vide Diagram S.G.No 9599/2006, Deed of Transfer No. T 13687/2007
- 2 The figure a,b,c,d,a represents Erf 53, vide General Plan No. A 9471/1969, Deed of Transfer No. T20777/1973
- 3 The figure b,B,C,f,c,b represents Erf 54, vide General Plan S.G No. A 9471/1969, Deed of Transfer No. T 205/1973
- 4 The figure c,f,D,E g,c represents Erf 55, vide General Plan S.G No. A 9471/1969, Deed of Transfer No. T 15371/1972
- 5 The figure e,c,g,n,e represents Erf 56, vide General Plan S.G.No. A 9471/1969, Deed of Transfer No. T 7798/1972

SG No.
2445/2010

Approved
Andie Schuman

for
SURVEYOR-
GENERAL
28.07.2010

Ord. No. 15/1986
Section 92(2)(c)



SCALE 1 : 2 000

The figure A B C D E F G H A represents 1,8512 hectares of land being ERF 360 in the Township of RIVONIA EXTENSION 1 and comprising the components 1 to 5 as listed above
Province of Gauteng
Compiled in June 2010

D J CAMERON
Professional Land Surveyor PLS0087

This diagram is annexed to No c d l f a Pretoria Registrar of deeds	The original diagrams are as listed above	File ERVEN S.R. No. T P 3490 Camp. IRIA-7/C G.P. SG.No. A9471/1969
--	--	--

BIC2051.CDN