

## DEPARTMENT OF ARTS AND CULTURE

NO. 1606

30 DECEMBER 2016

## SOUTH AFRICAN HERITAGE RESOURCES AGENCY

## DECLARATION OF THE SHARPEVILLE MASSACRE SITES AS NATIONAL HERITAGE SITES

By virtue of the powers vested in the South African Heritage Resources Agency, in terms of section 27 (5) of the National Heritage Resources Act (No. 25 of 1999) SAHRA hereby declares three of the Sharpeville Massacre Sites namely the Memorial Garden located on Erf 9172, the Police Station on Erf 9175 and the graves of the 69 people killed at the massacre located in the Phelindaba Cemetery, Theunis Kruger Street Vereeniging, as National Heritage Sites.

**Statement of Significance**

The 21<sup>st</sup> March 1960 marked a critical turning point in the history of South Africa when police opened fire on a peaceful march led by the Pan Africanist Congress in protest against the pass laws. Marches were organised in both Sharpeville (Gauteng) and Langa (Cape Town). This display of police brutality in which 69 people died, was to become known as the Sharpeville Massacre. Demonstrations and riots broke out across the country in reaction to the police response to both protests in Sharpeville and Langa. This led to the first declaration of a State of Emergency under Apartheid, and saw the banning of the ANC and Pan Africanist Congress (PAC). This brutal response from the State was the catalyst for the move away from passive resistance to armed struggle. The massacre inspired the painting of the "Black Priest" by Ronald Harrison (itself an important Struggle artwork that raised funds for Defence and Aid Movement). As testimony to the brutal force used to enforce the racial policies of the Apartheid administration, the Sharpeville Police Station, the Memorial Garden and the graves of the victims commemorate and honour those who bravely marched in protest against the forced relocation and restricted movements imposed by the Pass Laws and lost their lives on 21<sup>st</sup> March 1960.

**Schedule**

The demarcations of the Sharpeville Massacre Sites are as follows:

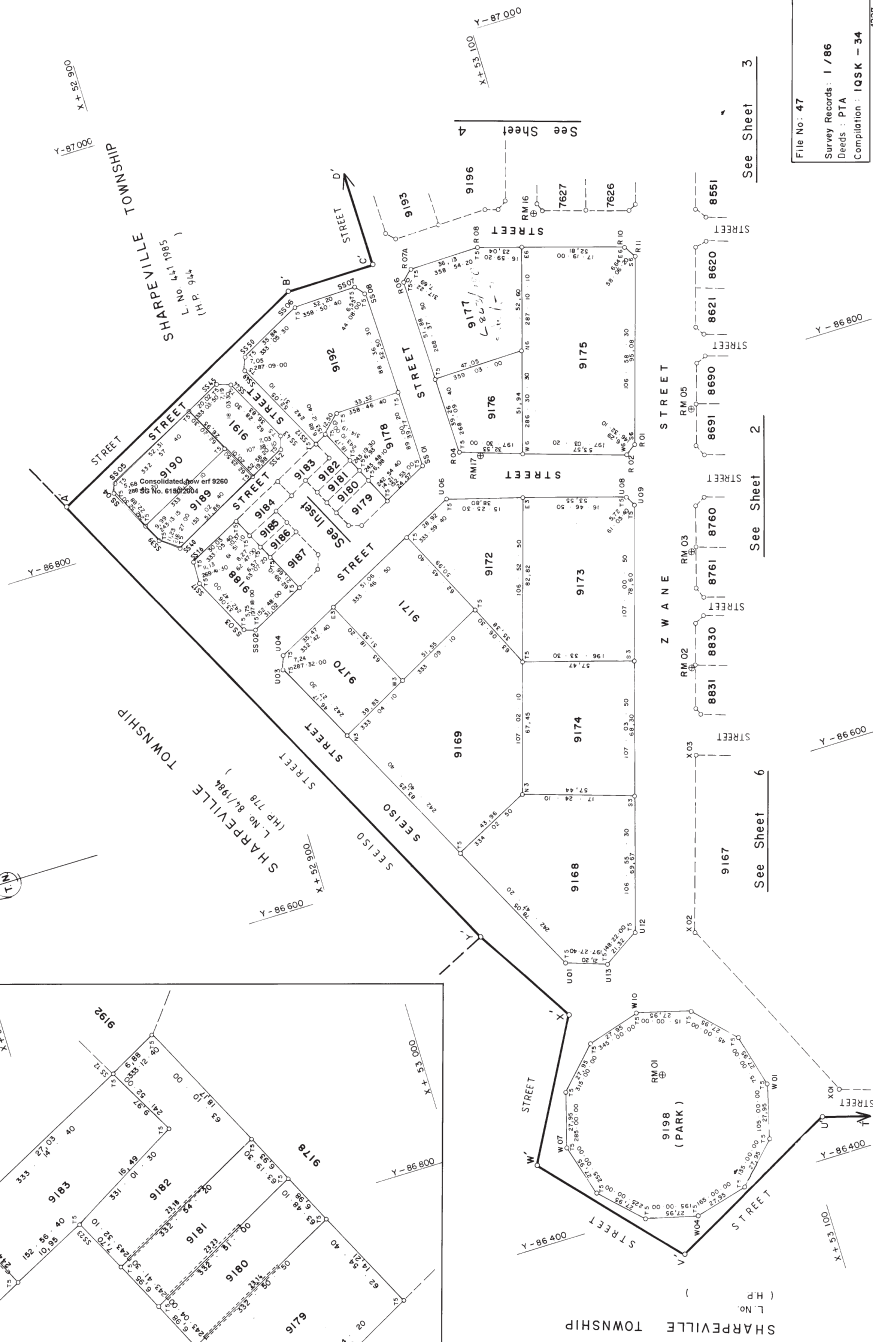
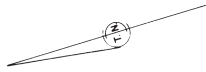
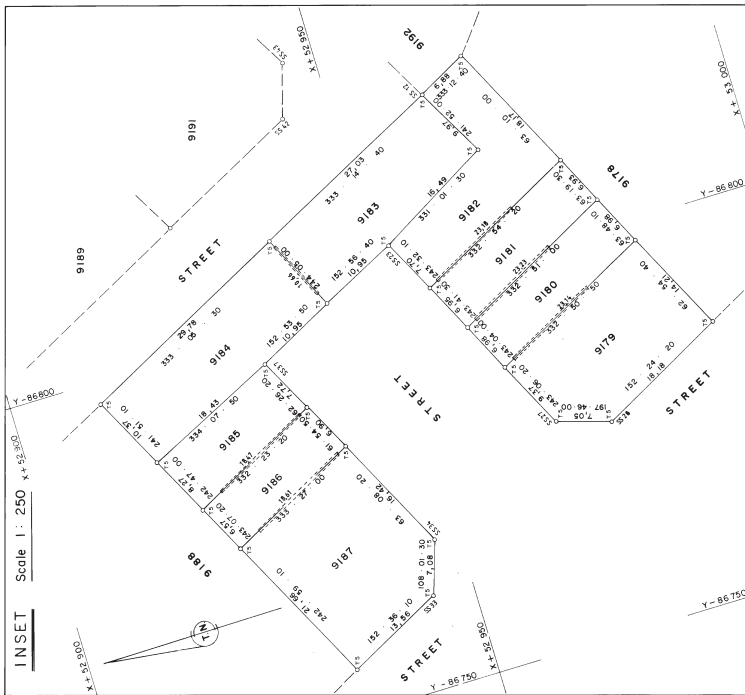
Site name	Erf No/ Farm	Province	Town	Municipalities	
				District Municipality	Local Municipality
Sharpeville Police Station	9175; Sharpeville	Gauteng	Vereeniging	Sedibeng District Municipality	Emfuleni Local Municipality
Memorial Garden	9172; Sharpeville	Gauteng	Vereeniging	Sedibeng District Municipality	Emfuleni Local Municipality

Site Name	Grave Numbers	Cemetery	Province	Town	District Municipality	Local Municipality
Sharpeville Massacre victims Grave Sites	1864 – 1932	Phelindaba Cemetery	Gauteng	Vereeniging	Sedibeng District Municipality	Emfulenei Local Municipality

L No. 171/1986  
 SHEET 5  
 Approved: *[Signature]*  
 for Surveyor General  
 1984, 12-23

**GENERAL PLAN**  
 (CONSISTING OF 6 SHEETS)  
 OF PART OF THE TOWNSHIP OF  
**SHARPEVILLE**  
 DEVELOPMENT BOARD: ORANGE - VAAL  
 PROVINCE: TRANSVAAL  
 Scale 1:1000

Surveyed in September to November 1985  
 by me: *[Signature]*  
 LAND SURVEYOR



File No: 47  
 Survey Records: 1/86  
 Directs: PTA  
 Completion: 105 K - 34  
 1337

HP 1337(5)