

## HERITAGE WESTERN CAPE

### DECLARATION OF HERITAGE RESOURCES AS A PROVINCIAL HERITAGE SITE

In terms of Section 27(6) of the National Heritage Resources Act, No. 25 of 1999, and by virtue of a resolution of the Council of Heritage Western Cape dated 28 September 2020, **Erf 661, "the Langa Pass Office", corner of King Langalibalele Drive and Lerotholi Avenue, Langa, Cape Town** as more fully described in the schedule below, is hereby declared as a Provincial Heritage Site.

#### Schedule

The demarcation of the Provincial Heritage Site is as follows:

**Erf 661, "the Langa Pass Office"**, in Langa, as described in the S.G No. L No 71/1988 Sheet 10

#### Significance

Black people were subject to laws restricting their freedom of movement and residence. Section 10 of Native Laws Amendment Act, 54 of 1952 required that a black person could only reside in a city like Cape Town if they could prove that they had been born there, lived continuously for fifteen years or more or had continuously worked for the same employer for a period of ten years or more. A 'pass' was a document required for lawful movement into, out of, or within a specified area; and had to be produced on demand by an authorised person. Failure to produce a pass constituted an offence. The passbook indicated the status of each person and had to be carried by black people at all times and regularly renewed.

Langa Pass Office and Court possess high historical significance. The history of the site holds importance in the community, in the pattern of South Africa's history and has strong and special association with the life or work of a person, group or organisation of importance. The Langa Pass Office is also significant in its association and role with the dompas system in the history of South Africa. The Langa Pass Office therefore bears significance in the memorialization of South Africa's history.

Colette Scheermeyer  
Acting Chief Executive Officer  
Heritage Western Cape

S. G. No. L. No. 71/1988  
 SHEET No. 10 of 10 SHEETS  
 APPROVED  
 the SURVEYOR GENERAL  
 1988/10/17



INSET SHEET

B C

GENERAL PLAN No. L No. 71/1988

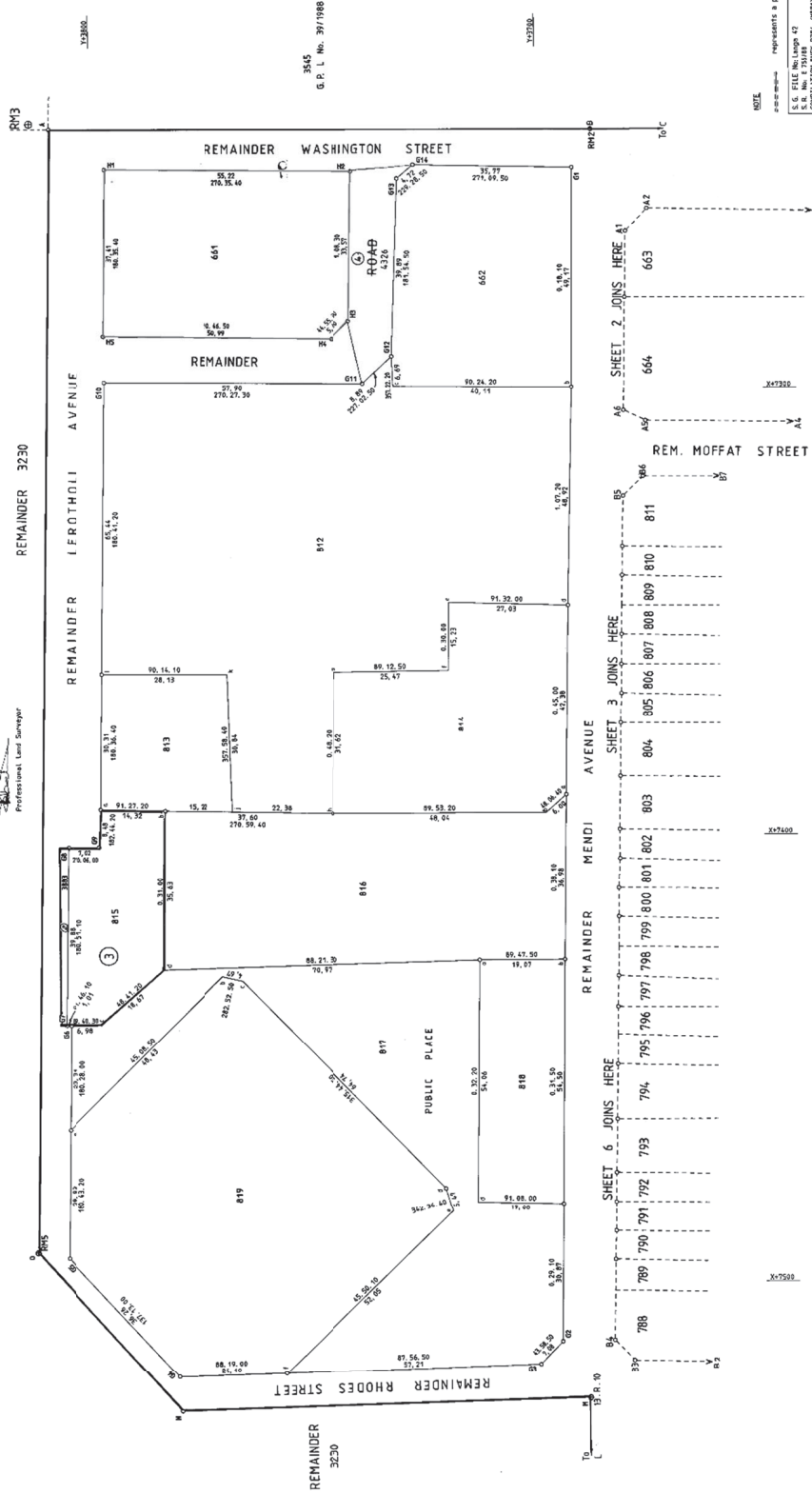
OF part of LANGA TOWNSHIP  
 Comprising Subdivision of Erf 3595 LANGA  
 Situate in the Municipality of Cape Town  
 Administrative District of the Cape  
 Province of the Cape of Good Hope

SCALE: 1/400

Surveyed in June - October 1987  
 by me



DE VILLIERS REID CHERRY and RIMMO Professional Land Surveyors



NOTE  
 represents a party wall  
 S.G. FILE No. Page 47  
 COMPLIATION NOS: 2384 - 0881  
 8889-2382 0870

L No 71/88 SHT 10