



**Case ID: 20685**

Makhubela Dineo · Tasbet Park Ext 2 · 078 380 0667 · dineo@singoconsulting.co.za

25 April 2023

Natasha Higgitt

Manager

South African Heritage Resources Agency

P.O Box 4637

Cape Town

8001

**Dear Natasha Higgitt**

**Singo Consulting (Pty) Ltd** on behalf of **Jaments (Pty) Ltd** formally request an exemption from conducting the assessment of impacts to heritage resources that complies with Section 38(3) of the National Heritage Act (NHRA) as required by Section 38(8) of the NHRA and Section 24(4)(b)(iii) of the National Environmental Management Act (NEMA) as part of the Environmental Assessment (EA) process.

Although Singo Consulting (Pty) Ltd understands that assessing the impact on heritage resources is an important part of the EA process and is required by both the NHRA and NEMA, I believe that an exemption is justified in this case for the following reasons:

- As per the results of Screening Tool and SAHRIS PalaeoSensitivity map showing that the area has Low Palaeontological Sensitivity, the proposed activity is unlikely to have any significant impact on archaeological and palaeontological resources (See Appendix 1).
- The most parts of the proposed prospecting right project are heavily modified areas where no signs of Paleontological, Archaeological components or any other Heritage components that were observed during the conducted site assessment
- Given the fact that Prospecting Right is not a complex project and it consists of shorter and small scale activities that will result in impacts that would be easily controlled. It will be highly unlikely for the proposed process to affect any heritage resources even after the prohibitive procedures; alternative measures have been implemented to minimize or mitigate any potential impacts on heritage resources



Office 870  
5 Balalaika Street  
Tasbet Park Ext 2  
Witbank

Please note that if any evidence of archaeological sites or remains (e.g., remnants of stone-made structures, indigenous ceramics, bones, stone artefacts, ostrich eggshell fragments, charcoal and ash concentrations), fossils or other categories of heritage resources are found during the proposed development, SAHRA APM Unit will be alerted as per section 35(3) of the NHRA.

Singo Consulting (Pty) Ltd would like to emphasize that it takes its responsibility to protect heritage resources and comply with relevant legislation very seriously. However, given the circumstances outlined above, we believe that an exemption from the assessment of impacts to heritage resources is appropriate in this case.

Please let me know if you require any further information or clarification in support of our request.

Thank you for your consideration of this matter.

Sincerely,

Operation Hi Teka Hinkwaswo



**Dineo, Makhubela**  
Public Participation Officer  
NDip: Environmental Science  
+27 78 380 0667  
dineo@singoconsulting.co.za



+27 13 692 0041    +27 86 514 4103    www.singoconsulting.co.za

OUR SERVICES  

 Mining & Prospecting Applications  
 Mining Feasibility Studies, Mine Design, Security Assessments and Compliance Report  
 Geotechnical (Slope/Stability, Settlement and Compaction) Report  
 Environmental Impact Assessment (EIA)  
 Public Participation Processes  
 Environmental Impact Assessment (EIA)  
 Environmental Management Plans (EMP)  
 Hydrological & Geo-technical (Settlement and Geotechnical) Studies  
 Social Impact and Community Development Plans (SICDP)  
 GIS Services  
 Corporate (Organisational Development) Consulting

OTHER SERVICES  

 Project Risk Assessment  
 ERM Construction  
 Safety Construction  
 Environmental Auditing  
 Cost Supply and other Logistics  
 Supply Management  
 Contract and Procurement Studies (Tenders, Procurement and Manage buy backfiles)  
 Mining Planting Rehabilitation

Linked in    f    WhatsApp    Instagram

Office 870, 5 Balalaika Street,  
Tasbet Park Ext 2, Witbank,1040



Office 870  
5 Balalaika Street  
Tasbet Park Ext 2  
Witbank

**Appendix 1: Screening Tool**

**MAP OF RELATIVE ARCHAEOLOGICAL AND CULTURAL HERITAGE THEME SENSITIVITY**



Very High sensitivity	High sensitivity	Medium sensitivity	Low sensitivity
			X

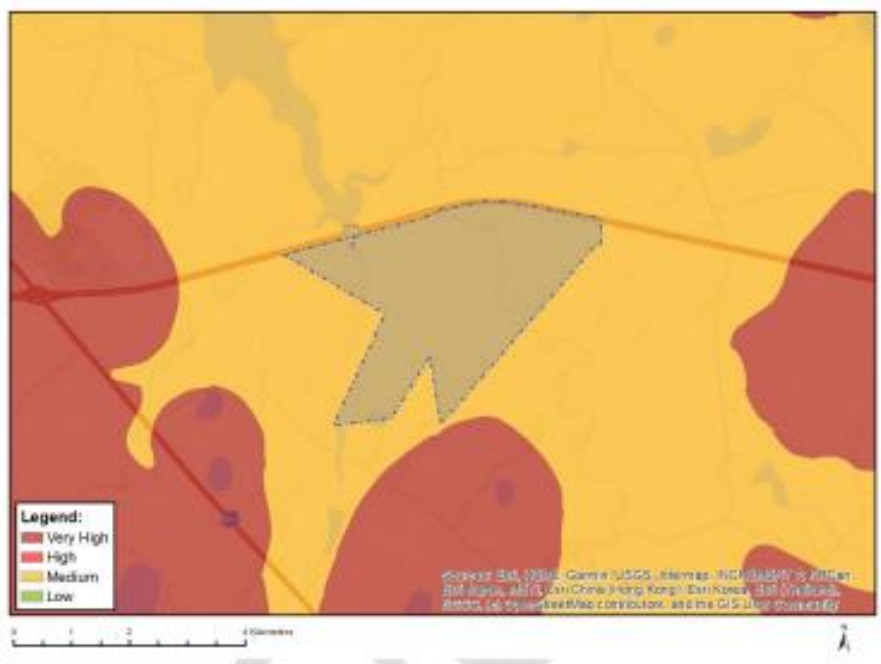
Sensitivity Features:

Sensitivity	Feature(s)
Low	Low sensitivity



Office 870  
5 Balalaika Street  
Tasbet Park Ext 2  
Witbank

MAP OF RELATIVE PALEONTOLOGY THEME SENSITIVITY



Very High sensitivity	High sensitivity	Medium sensitivity	Low sensitivity
		X	

Sensitivity Features:

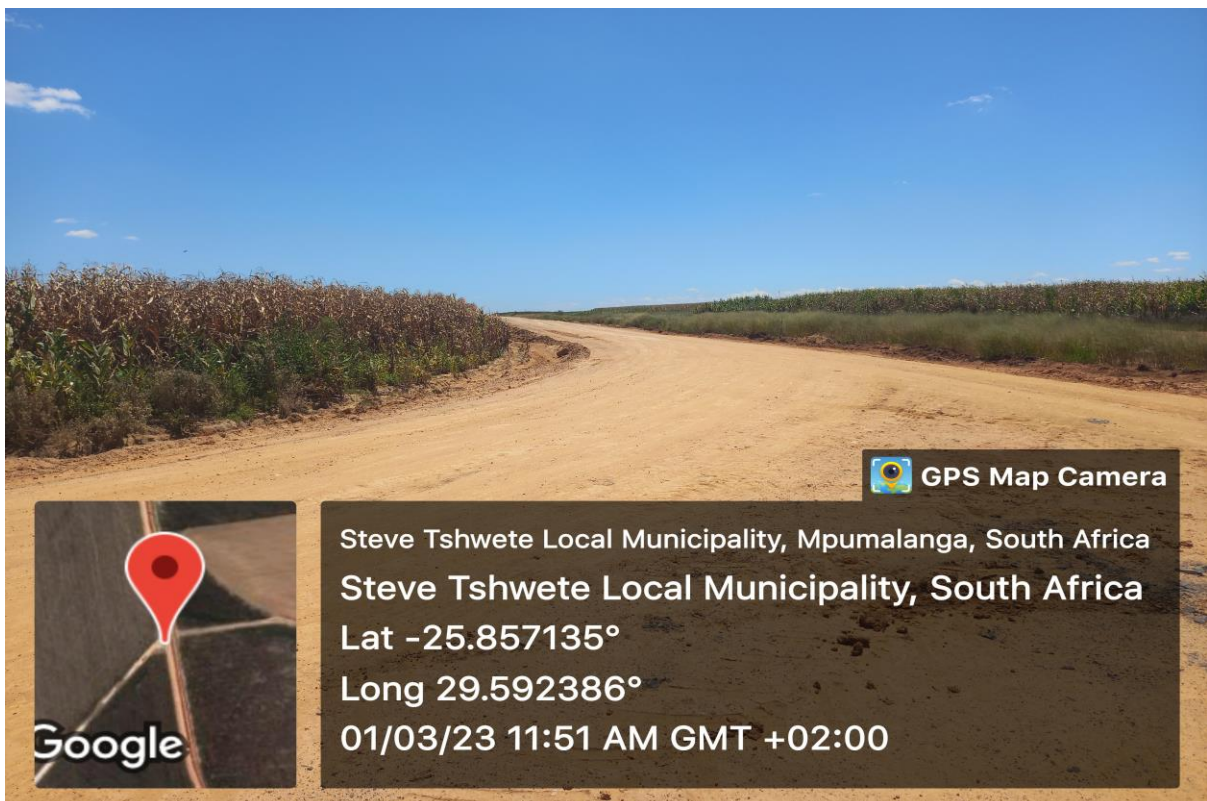
Sensitivity	Feature(s)
Low	Features with a Low paleontological sensitivity
Medium	Features with a Medium paleontological sensitivity





Office 870  
5 Balalaika Street  
Tasbet Park Ext 2  
Witbank

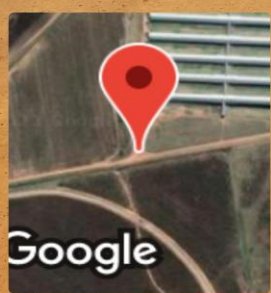
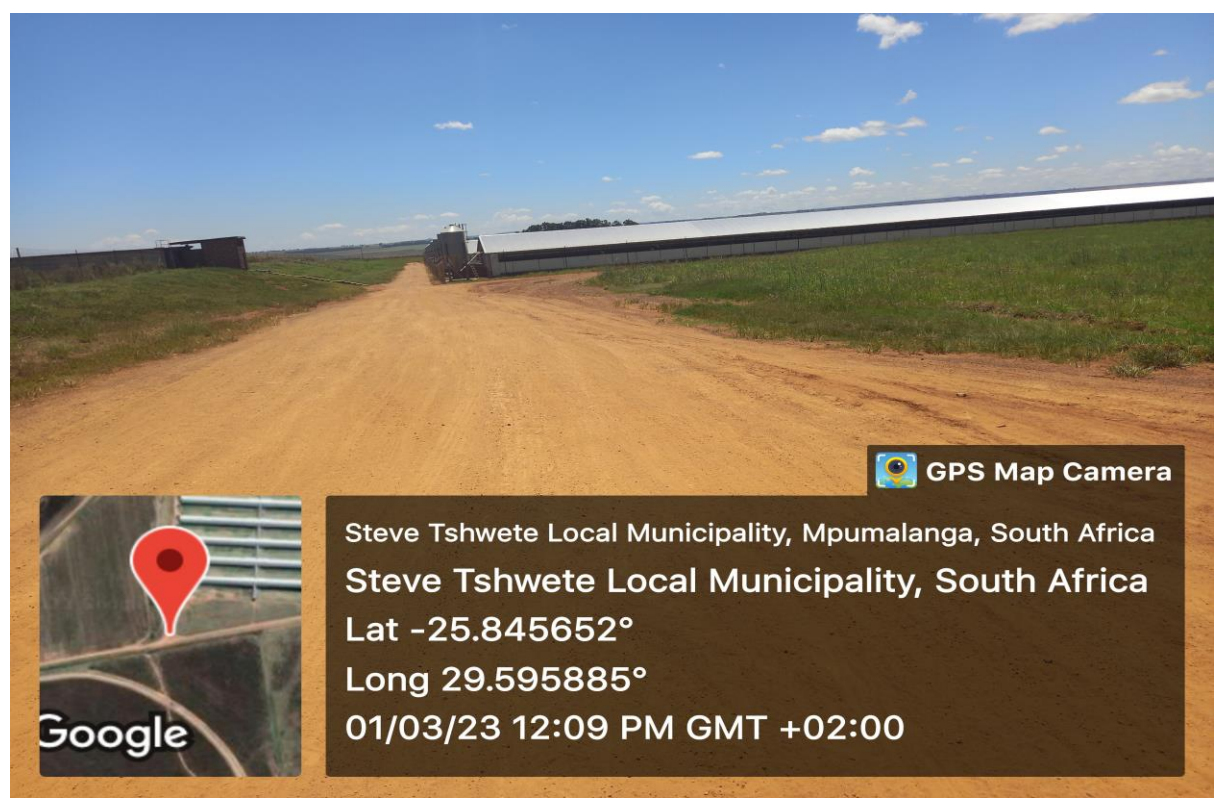
## Appendix 2: PROJECT AREA



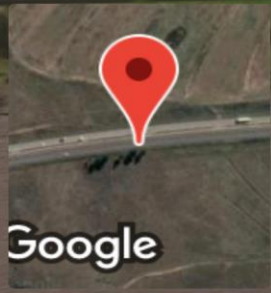




Office 870  
5 Balalaika Street  
Tasbet Park Ext 2  
Witbank



Steve Tshwete Local Municipality, Mpumalanga, South Africa  
Steve Tshwete Local Municipality, South Africa  
Lat -25.845652°  
Long 29.595885°  
01/03/23 12:09 PM GMT +02:00



Nkangala District Municipality, Mpumalanga, South Africa  
N4, South Africa  
Lat -25.816847°  
Long 29.593496°  
01/03/23 03:07 PM GMT +02:00