



Case ID: 21077

Abel Mojapelo · Tasbet Park Ext 2 · 071 362 7894 · abel@singoconsulting.co.za

15 June 2023

Natasha Higgitt

Manager

South African Heritage Resources Agency

P.O Box 4637

Cape Town

8001

Dear Natasha Higgitt

Singo Consulting (Pty) Ltd on behalf of **Korhaan Farming** formally request an exemption from conducting the assessment of impacts to heritage resources that complies with Section 38(3) of the National Heritage Act (NHRA) as required by Section 38(8) of the NHRA and Section 24(4)(b)(iii) of the National Environmental Management Act (NEMA) as part of the Environmental Assessment (EA) process.

Although Singo Consulting (Pty) Ltd understand that assessing the impact on heritage resources is an important part of the EA process and is required by both the NHRA and NEMA, I believe that an exemption is justified in this case for the following reasons:

- As per the results of the Screening tool, the map on Appendix 1 show's that the area has low relative Archaeological and Cultural Heritage theme sensitivity, the proposed activity will not have any significant impact on above mentioned sensitivty areas.
- Even though the GIS layer – palaeosensitivity on Appendix 2 shows that a deskstop study is required, most parts of the proposed development area has already been cleared. Sensitive objects such as artifacts, graves, monuments or building older than 60 years were not observed during ground truthing.
- Given the fact that agricultural activities are not complex and their impacts are minimal. Should any evidence of archaeological sites or remains (e.g., remnants of stone-made structures, indigenous ceramics, bones, stone artefacts, ostrich eggshell fragments, charcoal and ash concentrations), fossils or other categories of heritage resources are found during the proposed development, SAHRA APM Unit will be alerted as per section 35(3) of the NHRA.




Office 870
5 Balalaika Street
Tasbet Park Ext 2
Witbank

Singo Consulting (Pty) Ltd would like to emphasize that it takes its responsibility to protect heritage resources and comply with relevant legislation very seriously. However, given the circumstances outlined above, we believe that an exemption from the assessment of impacts to heritage resources is appropriate in this case.

Please let me know if you require any further information or clarification in support of our request.


Thank you for your consideration of this matter.

Sincerely,



Singo Consulting (Pty) Ltd

Operation Hi Teka Hinkwaswo




Abel, Mojapelo

Consultant

BSc. Environmental Management (Cand)
N.Diploma Geology

+27 71 362 7894

abel@singoconsulting.co.za



OUR SERVICES
Mining & Environmental Applications
Mining Feasibility Studies, Mine Design, Resource Estimation and Competency Report
Geological (Structural, Metamorphic & Sedimentary) Reports
Geotechnical Studies (Slope and Rock)
Public Participation Processes (PP)
Environmental Impact Assessment (EIA)
Environmental Management Plans (EMP)
Historical & Archaeological Surveys and Conservation Studies
Social, Labour and Community Development Plans (SLCDP) Services
Corporate (Organisational Development) Consulting

MORE SERVICES
Water Use License
EIA Construction
Biodiversity Conservation
Environmental Auditing
Cost Benefit and other Studies
Water Resources (Dams, Wetlands, and Surface Run-off/Storage)
Mining Operation Services (Pre and Post)
Post Mining Rehabilitation

Office 870, 5 Balalaika Street,
Tasbet Park Ext 2, Witbank, 1040

+27 13 692 0041

+27 86 514 4103

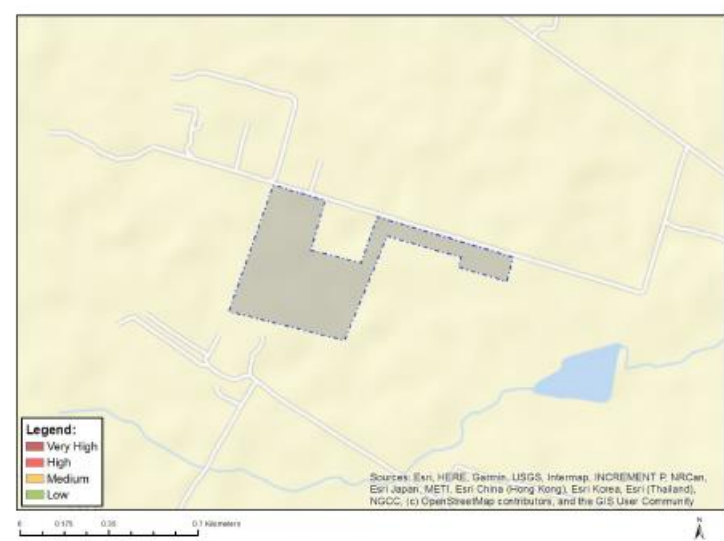
www.singoconsulting.co.za



Office 870
 5 Balalaika Street
 Tasbet Park Ext 2
 Witbank

Appendix 1: Screening Tool

MAP OF RELATIVE ARCHAEOLOGICAL AND CULTURAL HERITAGE THEME SENSITIVITY



Very High sensitivity	High sensitivity	Medium sensitivity	Low sensitivity
			X

Sensitivity Features:

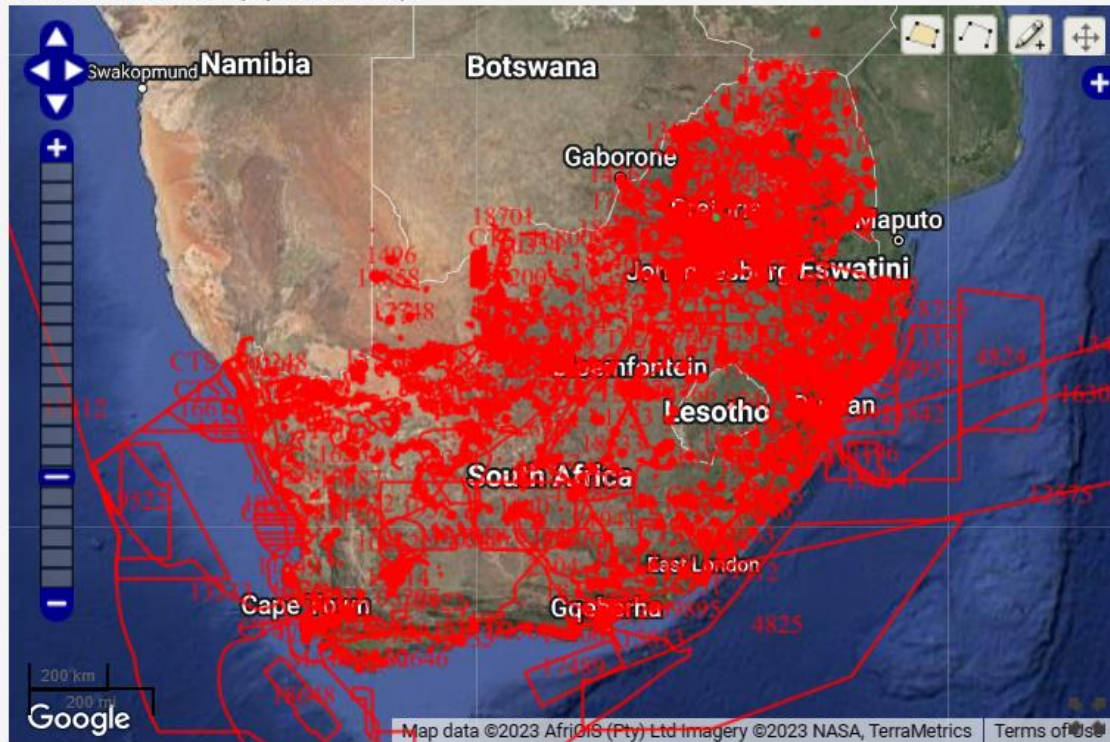
Sensitivity	Feature(s)
Low	Low sensitivity



Office 870
5 Balalaika Street
Tasbet Park Ext 2
Witbank

Appendix 2: SAHRA GIS layer- Palaeontology.

GREEN, MODERATE - desktop study is required
 BLUE, LOW - no palaeontological studies are required however a protocol for finds is required
 GREY, INSIGNIFICANT/ZERO - no palaeontological studies are required
 WHITE/CLEAR, UNKNOWN - these areas will require a minimum of a desktop study. As more information comes to light, SAHRA will continue to populate the map.





Office 870
5 Balalaika Street
Tasbet Park Ext 2
Witbank

Appendix 3: Site Conditions

