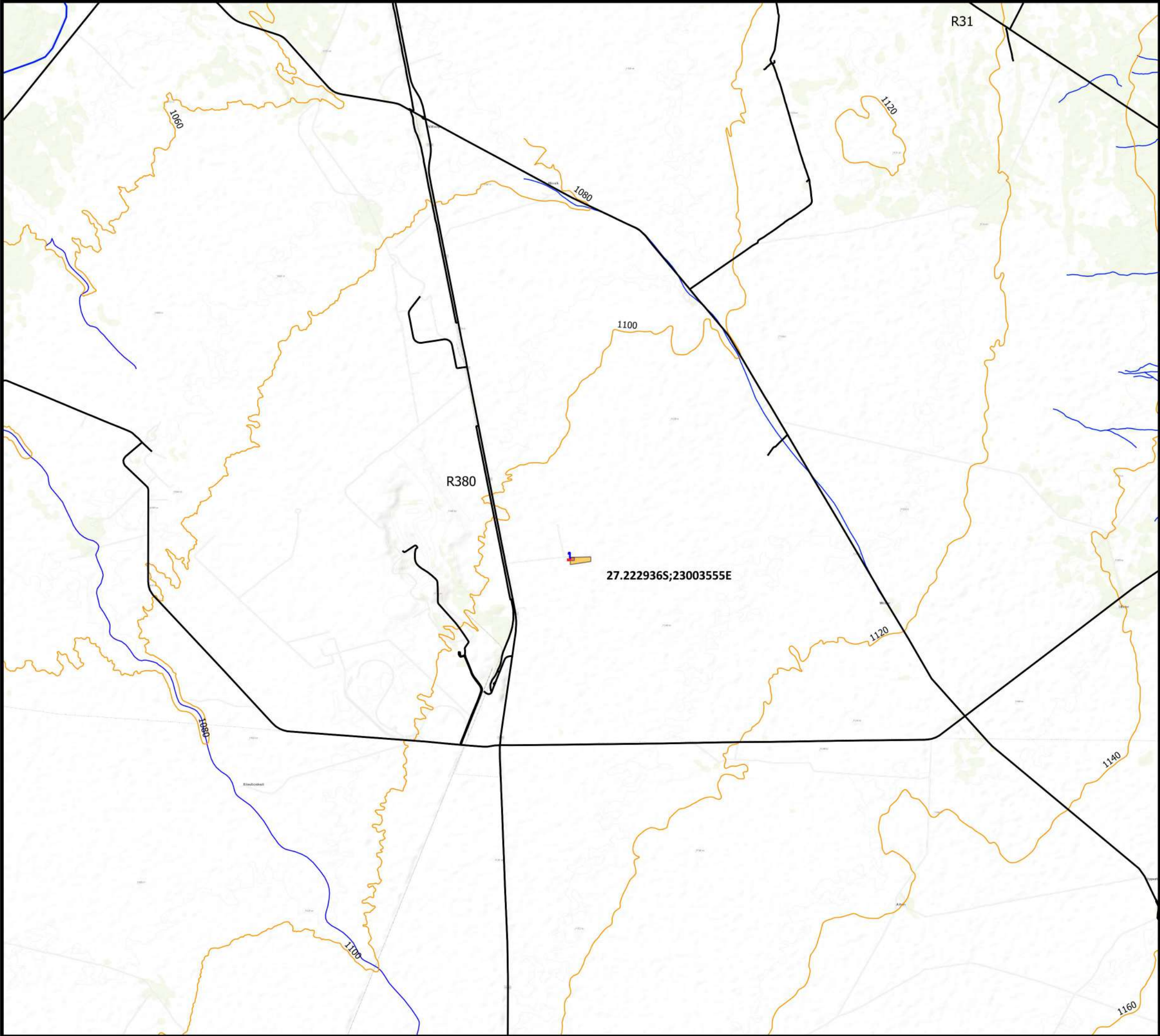


APPENDIX A – MAPS



Adams BESS Topographical Map

Legend

- Contours
- Rivers
- Roads
- Proposed Site
- BESS Substation

High Voltage Connections

- HV line connection to Eskom Substation (OPT1)
- HV connection loop-in & loop-out (OPT2)



0 1 2 km



Scale: 1:50000
Datum: WGS 84
Date Created: October 2022
Created by: Luke Saunders
Contact: lukes@ncc-group.co.za

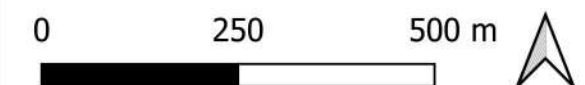
Adams BESS Topographical Map

Legend

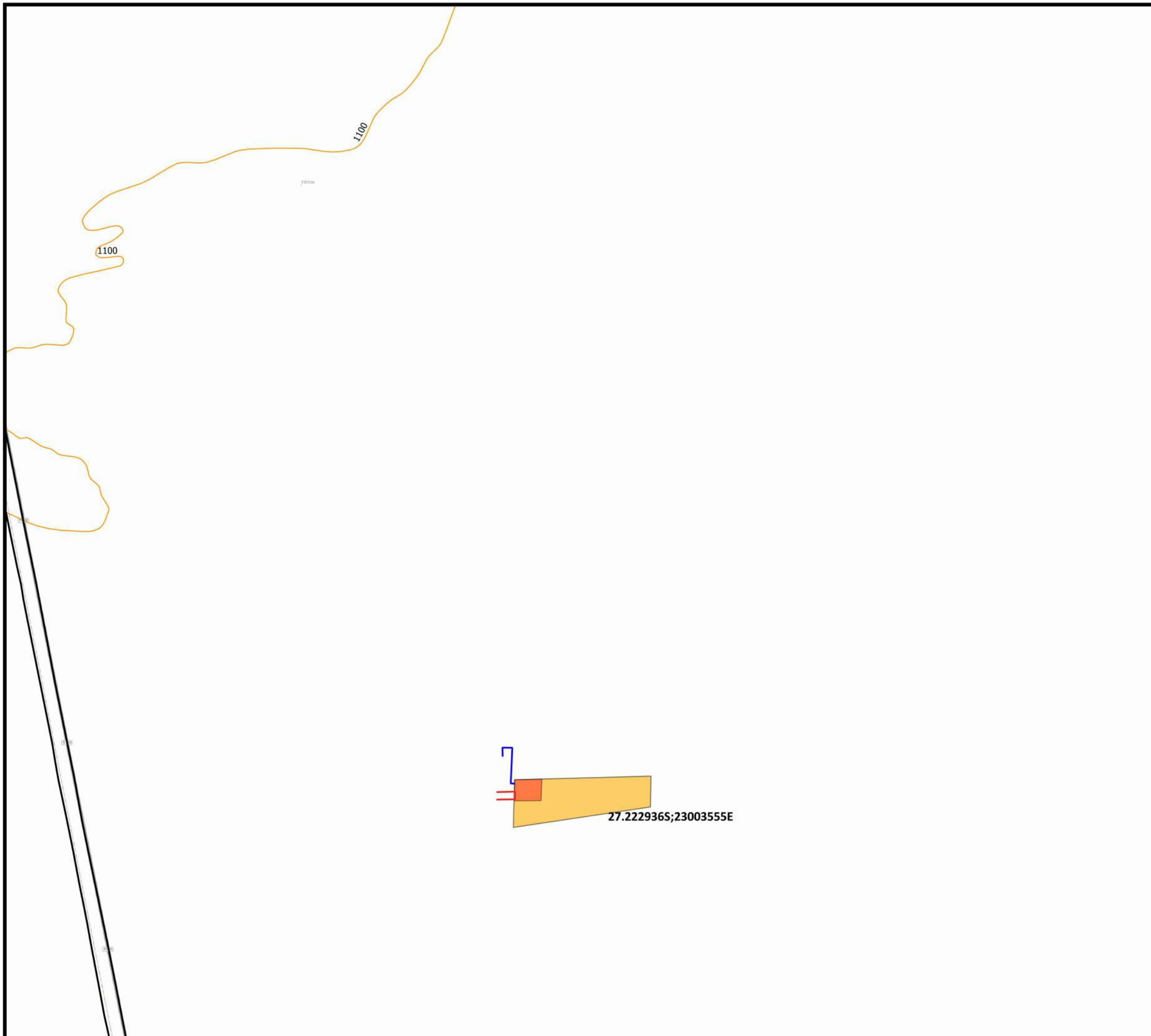
- Contours
- Rivers
- Roads
- Proposed Site
- BESS Substation

High Voltage Connections

- HV line connection to Eskom Substation (OPT1)
- HV connection loop-in & loop-out (OPT2)



Scale: 1:7500
Datum: WGS 84
Date Created: October 2022
Created by: Luke Saunders
Contact: luke@ncc-group.co.za





Adams BESS Aerial Locality Map

Legend

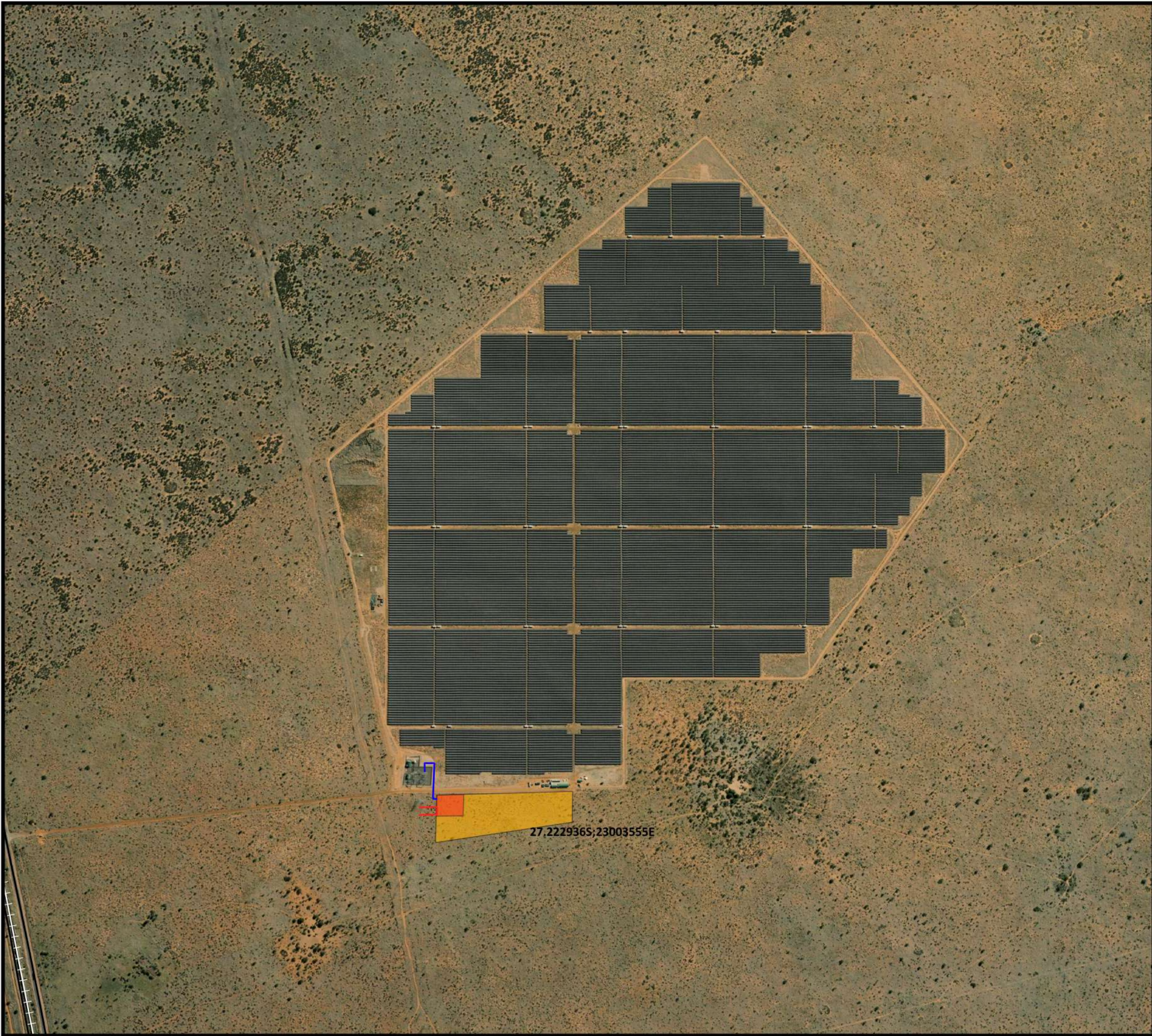
- Rivers
- Roads
- Railway
- Proposed Site
- BESS Substation
- High Voltage Connections
 - HV line connection to Eskom Substation (OPT1)
 - HV connection loop-in & loop-out (OPT2)



0 1 2 km



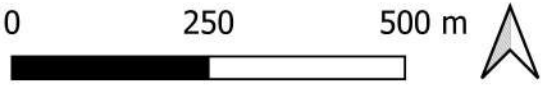
Scale: 1:50000
Datum: WGS 84
Date Created: May 2022
Created by: Luke Saunders
Contact: luke@ncc-group.co.za



Adams BESS Aerial Locality Map

Legend

- Roads
 - Railway
 - Proposed Site
 - BESS Substation
- High Voltage Connections**
- HV line connection to Eskom Substation (OPT1)
 - HV connection loop-in & loop-out (OPT2)



Scale: 1:7500
Datum: WGS 84
Date Created: May 2022
Created by: Luke Saunders
Contact: luke@ncc-group.co.za



Adams BESS Biodiversity Map

Legend

- Rivers
- Proposed Site
- BESS Substation
- Biodiversity types
 - Critical Biodiversity Area Two
 - Ecological Support Area
 - Other Natural Areas
- High Voltage Connections
 - HV line connection to Eskom Substation (OPT1)
 - HV connection loop-in & loop-out (OPT2)



0 1 2 km



Scale: 1:50000
Datum: WGS 84
Date Created: October 2022
Created by: Luke Saunders
Contact: luke@ncc-group.co.za



Adams BESS Freshwater Map

Legend

- Rivers
- Proposed Site
- BESS Substation
- Hydrology Areas
 - Dry Pan
 - Dry Water Course
- High Voltage Connections
 - HV line connection to Eskom Substation (OPT1)
 - HV connection loop-in & loop-out (OPT2)



0 1 2 km



Scale: 1:50000
Datum: WGS 84
Date Created: October 2022
Created by: Luke Saunders
Contact: luke@ncc-group.co.za

Adams BESS Opportunities and Constraints Map: Connection to the existing loop-in and Loop-out Lines

Legend

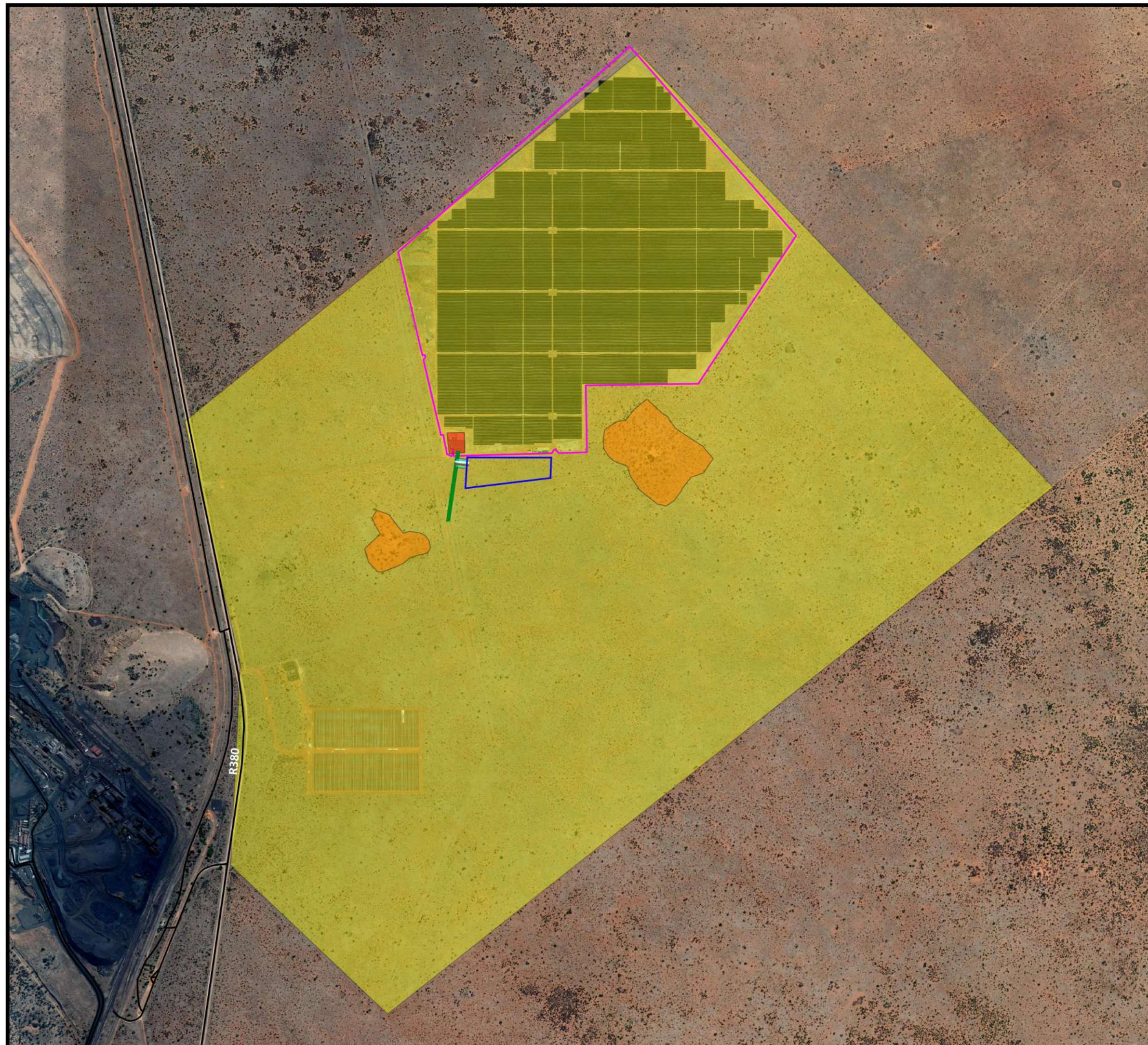
- Medium Ecological Sensitivity
- Medium-High Ecological Sensitivity

Existing Infrastructure

- Existing Roads
- Existing Voltage Line
- Existing PV Facility
- Existing Substation

Proposed Infrastructure

- Proposed Loop-in
- Proposed Loop-out
- BESS and Substation
- Proposed Line Servitude



0 250 500 m



Scale: 1:12000

Datum: WGS 84

Date Created: October 2022

Created by: Luke Saunders

Contact: lukes@ncc-group.co.za

Adams BESS Opportunities and Constraints Map: Connection to the existing PV Substation

Legend

- Medium Ecological Sensitivity
- Medium-High Ecological Sensitivity

Existing Infrastructure

- Existing Roads
- Existing Voltage Line
- Existing PV Facility
- Existing Substation

Proposed Infrastructure

- Proposed Line
- BESS and Substation
- Proposed Line Servitude



0 250 500 m



Scale: 1:12000

Datum: WGS 84

Date Created: October 2022

Created by: Luke Saunders

Contact: lukes@ncc-group.co.za

Adams 2 BESS RED Zone Map

Legend

● Adams 2 BESS Site

RED Zones

- REDZ 1 - Overberg Wind
- REDZ 2 - Komsberg Wind
- REDZ 3 - Cookhouse Wind
- REDZ 4 - Stormberg Wind
- REDZ 5 - Kimberley Solar
- REDZ 6 - Vryburg Solar
- REDZ 7 - Upington Solar
- REDZ 8 - Springbok Wind
- REDZ 9 - Emalahleni
- REDZ 10 - Klerksdorp
- REDZ 11 - Beaufort West



0 100 200 km



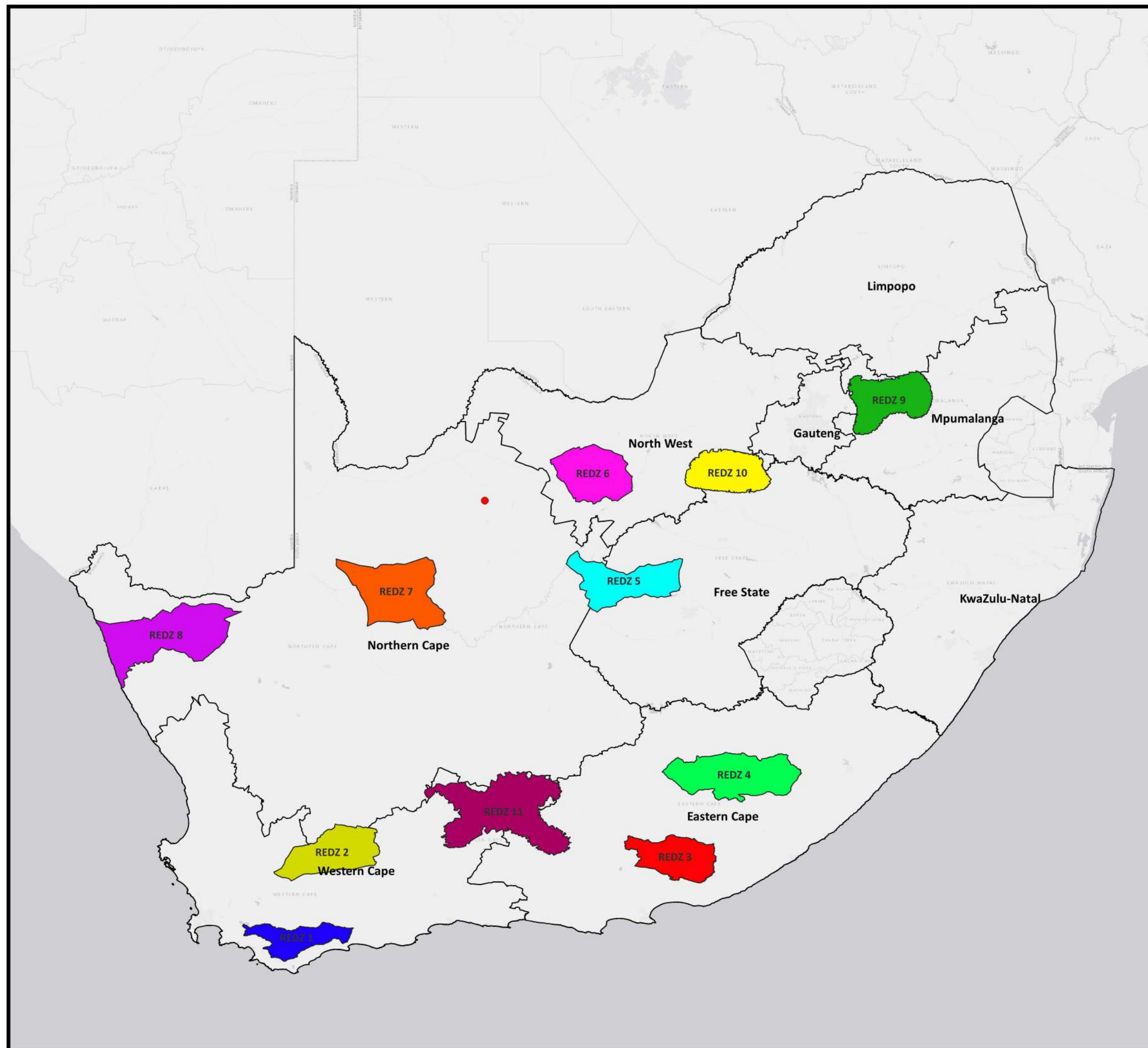
Scale: 1:4500000

Datum: WGS 84

Date Created: May 2022

Created by: Luke Saunders

Contact: lukes@ncc-group.co.za



Adams BESS Vegetation Map

Legend

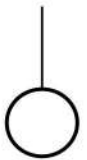
- Proposed Site
- BESS Substation

Vegetation Type

- Kathu Bushveld

High Voltage Connections

- HV line connections to Eskom Substation (OPT1)
- HV connections loop-in & loop-out (OPT2)



0 250 500 m



Scale: 1:11000
Datum: WGS 84
Date Created: October 2022
Created by: Luke Saunders
Contact: lukes@ncc-group.co.za

27.222936S;23003555E