



Reg. No || 2011/103643/07

Physical Address : 91 Hans van Rensburg Street, Suite 107, Eurasia Courts, Polokwane || **Postal Address** || P.O Box 54, Polokwane, 0700

Tel: 015 297 7324 || **Cell:** 079 1930 634 || **Fax:** 015 297 7216 (086 539 6388)

**REPORT ON ACCIDENTAL EXPOSURE OF BURIAL NEAR MAFEFE VILLAGE,
CAPRICORN LOCAL MUNICIPALITY, LIMPOPO PROVINCE**

HERITAGE CONSULTANTS	CLIENT
<p>Ecorite Consultants (PTY) Ltd 91 Hans van Rensburg Street Suite 107, Eurasia Courts Polokwane</p> <p>P.O Box 54 Polokwane 0700</p> <p>Tel: 015 297 7324 Mobile: 079 1930 634 Fax: 086 539 6388 Email: silidima@gmail.com</p> 	<p>Eskom Holding (SOC) Limited Limpopo Operating Unit (LOU)</p> <p>92 Hans van Rensburg Street, Polokwane P.O Box 3499 Polokwane 0700</p> <p>Tel: 015 299 0498 Fax: 086 244 2959 Cell: 076 988 8169 Email: mudaumu@eskom.co.za</p> 

Date: 09 April 2015

Contents

1. INTRODUCTION	3
2. PRELIMINARY FINDINGS	5
3. PROPOSED MITIGATION PROGRAMME	5
4. SCHEDULE OF TASKS	7

1. INTRODUCTION

In April 2015 workers of TlouLec General Trading accidentally exposed a possible grave during digging for installation of low voltage overhead cables near Mafefe Village (Figs 1-2); GPS coordinates: Lat - S24 6' 26.307", Long- E30 7' 12.029"

TlouLec is contracted by [Eskom Holding \(SOC\) Limited Limpopo Operating Unit \(LOU\)](#) to erect distribution power line near Mafefe Village. Mafefe is a small village in a mountainous area east of Polokwane and just north of the Olifants River.

Rural electrification is part of government's on-going programme to provide basic needs in rural areas. Operation was suspended immediately after the discovery. The local headman moved in immediately to apply a concrete cover on the remains with a view to preventing possible theft of the bones for ritual purposes.

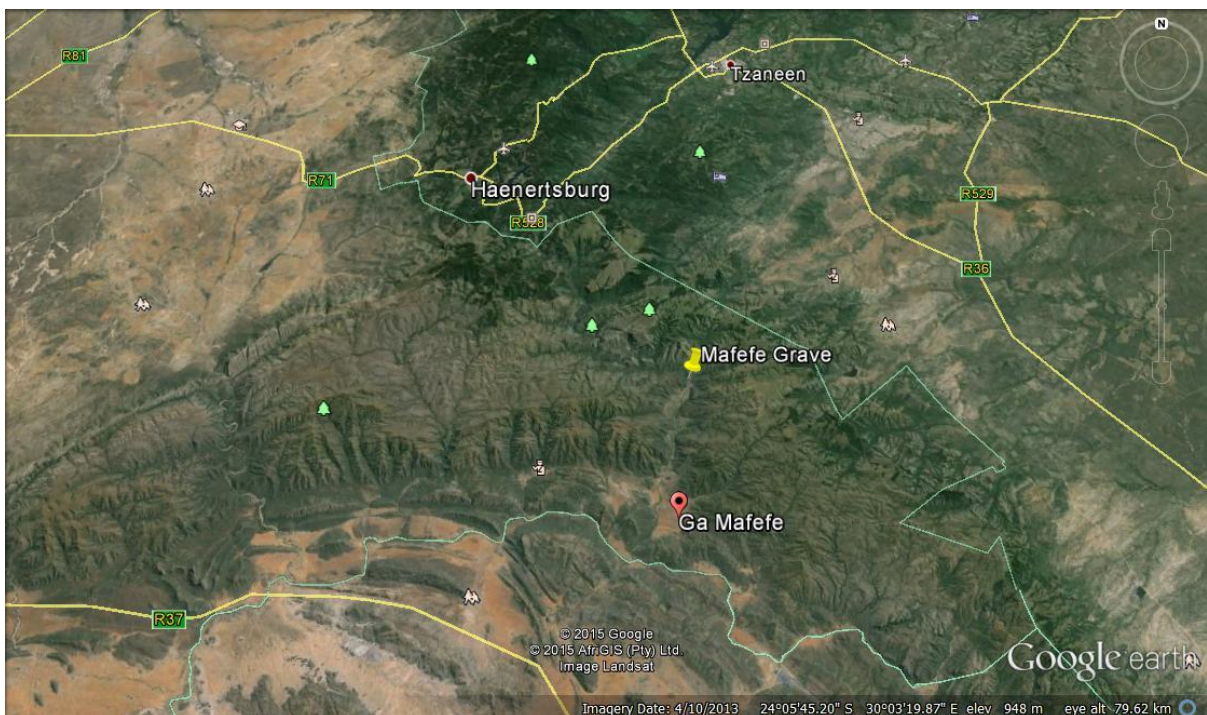


Fig 1. Map showing location of the burial near Mafefe Village.

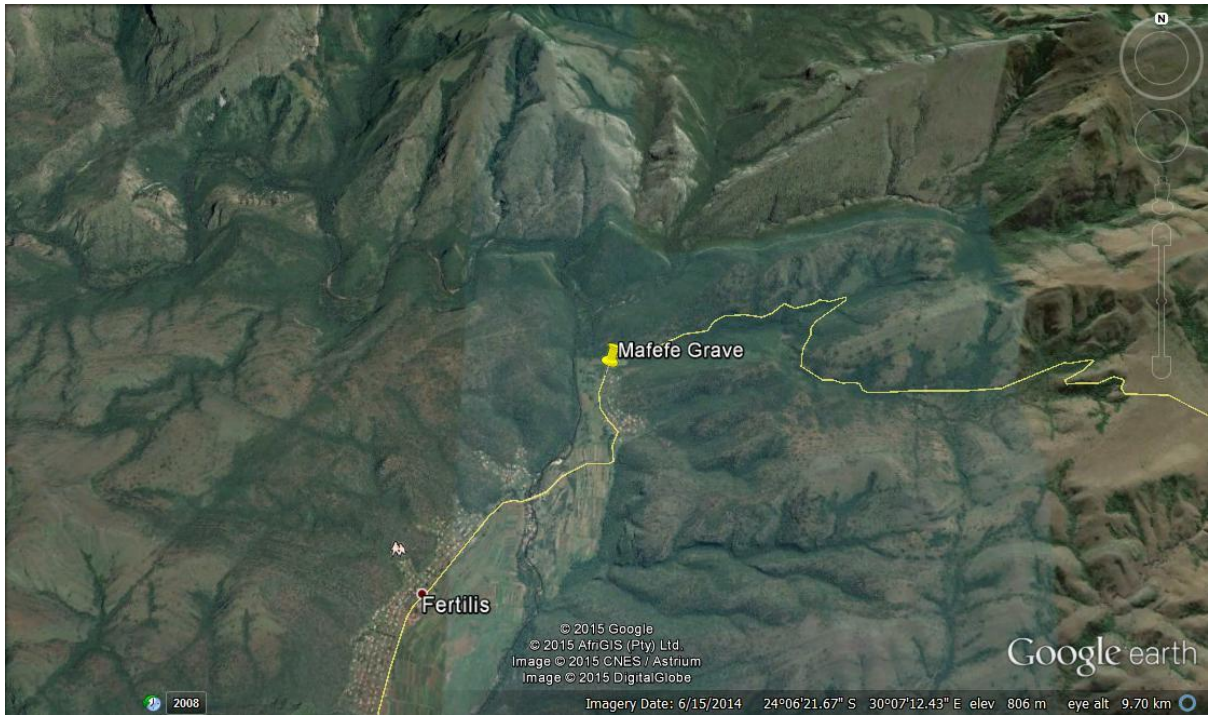


Fig. 2. Close-up map of area.



Fig. 3. Wide view of grave site.



Fig 4. Grave site with concrete seal.

2. PRELIMINARY FINDINGS

[Eskom Holding \(SOC\) Limited Limpopo Operating Unit \(LOU\)](#) invited Ecorite Consultants (Pty) Ltd, a Heritage Specialist firm to carry out preliminary investigations, which prompted a visit to the site on 20 April 2015.

As stated earlier, the local headman put a concrete seal to cover the remains in order to protect them from possible theft of the bones for ritual purposes. We probed the area and found a lot of bone fragments in the soil around the concrete seal. Our preliminary conclusion is that proper salvage has to be undertaken in accordance with professional archaeological procedure. The burial is old as evidenced by the poor state of preservation of the bones. It is therefore considered as an archaeological relic (Figs 3-4).

3. PROPOSED MITIGATION PROGRAMME

Given that the burial is located in what is now a developing residential area, it is necessary to move it to another location. This entails an archaeological salvage operation in line with SAHRA guidelines on the treatment of human remains. We further propose that with due consultation and consent from the local Traditional

Authority, the remains must be reburied at the local cemetery rather than send to a museum or other research institution. These institutions hold a large number of such collections. International opinion is now generally not in favour of the argument that such material provides good opportunity for research into biology and past funerary practices. As already stated, research institutions hold a quite a lot of this material anyway.

4. SCHEDULE OF TASKS

	TASK	ACTION	Time frame
1	Quotation.	Ecorite	21 April 2015
2	Issue Task Order.	Eskom	23 April 2015
3	Send Preliminary Report to Eskom and SAHRA.	Ecorite Consultants	24 – 27 April 2015 (3 days)
4	Consultation with the Traditional Tribal Authority and SAPS. Secure letters of consent from the Tribal Authority and SAPS for relocation of burial.	Ecorite	3 May 2015 to 17 April 2015
5	Consultation with local residents (Public Participation Process – PPP).	Ecorite	4 May 2015 to 5 May 2015
6	Secure grave relocation permit from SAHRA.	Ecorite	14 May 2015 to 28 May 2015 (14 Days)
7	Sub-contract a funeral parlour to provide coffin, tombstone, secure reburial site and perform reburial service.	Ecorite	08 May 2015 to 09 May 2015
8	Archaeological salvage preceded by traditional rites connected with burials.	Ecorite, Traditional Authority, Funeral Service	30 May 2015 to 08 June 2015
9	Burial with ceremony.	Ecorite, Traditional Authority, Funeral Service	09 June 2015
10	Write report and submit to SAHRA and Eskom.	Ecorite	25 May 2015

NB: Tasks 4, 5 & 6 may be synchronised as parallel processes.

END

