

(i) Investigations of Two Suspected Graves (Site No 1) in the Footprint of the Proposed Construction of an Ore Processing Complex at Two Rivers Platinum Mine, De Brochen in the Greater Tubatse Local Municipality, Limpopo Province

(ii) Investigation of stone settings at Site No 2 and making recommendations on appropriate protection measures if they are possible burials

Prepared by

Edward Matenga

(MPhil, Archaeology; PhD Archaeology & Heritage, Uppsala/Sweden)

27 July 2022



(A)HSA Archaeological and Heritage Services Africa (Pty) Ltd

Reg. No. 2016/281687/07

P Box 2702, The Reeds, 0158, Centurion, Pretoria

Email: e.matenga598@gmail.com.

Cell: +27 73 981 0637

Website: www.archaeologicalheritage.co.za

TABLE OF CONTENTS

1. INTRODUCTION	3
2. STONE CAIRNS AT SITES A AND B	3
3. STONE CAIRNS AT SITE C	7
4. RECOMMENDATIONS.....	12

1. INTRODUCTION

Archaeological and Heritage Services Africa (AHSA) Pty Ltd has been appointed by Two Rivers Platinum Mine (TRP) to conduct investigations of a possible burials represented by seven (7) cairn markers. The cairns are located within the footprint of the proposed development of a platinum ore processing plant. The scope of investigations extends to a third site 600 m to the southwest located on the foot of hills that form a western fringe of the mining area, where settings of stones may possibly be burial markings. They are located close to a protected burial ground.

2. STONE CAIRNS AT SITES A AND B

The specialist has conducted three visits to the Two Rivers Platinum Mine for a preliminary assessment of the suspicious structures and burial ground. It has been established that there are two stone cairns together named Site A (Lat: 24°56'4.02"S Long: 30° 5'50.40"E), which are possible grave markers (Figures 1 – 3). A potsherd was found and recorded 50 m from the Cairns, which seems to suggest a settlement in the area probably dating back more than 100 years (Lat: 24°56'4.02"S, Long: 30° 5'50.40"E) (Figure 4). There is a protected burial ground located 400 m to the northwest of the cairns which is called Burial Ground 1. This context justifies the cautious approach which has been taken by the mine. In exercising due diligence the two cairns must be investigated to ascertain where they are graves or not.

Site B is located on the foot of the hills on the western fringe of the mine 600 m to the northwest of Site No 1 (Lat: 24°56'14.20"S, Long: 30° 5'33.00"E). Stone settings were observed which may represent the head and base of a single grave (Figure 5). In addition there are two large stones erected a short distance to the east which may represent headstones (Figure 6). These features are close to identified graves which are enclosed in steel palisades (Figure 7). It has been recommended that a surface (non-destructive) investigation of the stone setting and the erected stones is undertaken to establish whether these may be graves. If they are possible graves appropriate action will be recommended taking into consideration that there are graves in the same area.

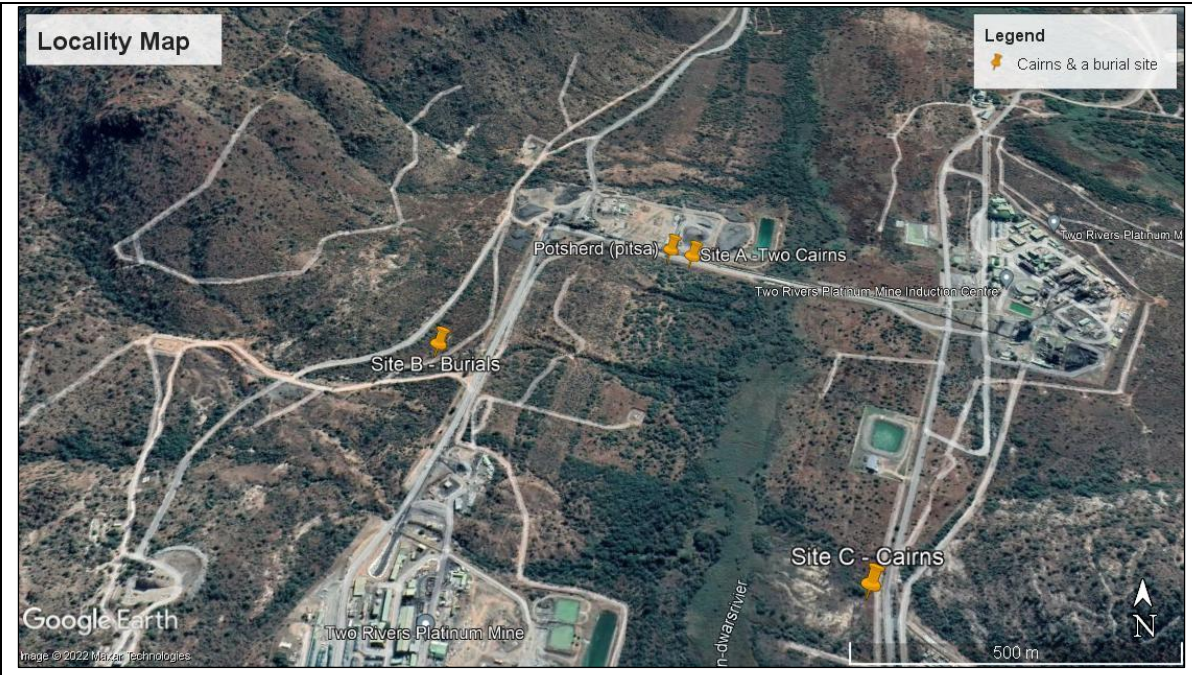


Figure 1: Google Earth map shows the location of the 2 cairns (Site A), a site where a potsherd was found, a protected Burial Site (B) with suspicious stone settings, and Site C with Cairns



Figure 2: Site A, Stone Cairn 1 to be investigated



Figure 3: Site A, Cairn 2 to be investigated



Figure 4: Potsherd found 50 m west of Site A



Figure 5: At Site B, a setting of stones that appear to represent a burial with a headstone



Figure 6: Two other erected stones at Site No 2 which look like headstones



Figure 7: A fenced grave at Site No 2

3. STONE CAIRNS AT SITE C

Five settings of stones which are possible superficial markers for graves have been isolated for investigation at Site C. This approach is recommended as a cautious approach and is necessary professional due diligence considering public sensibilities about the sanctity of graves and human remains.

Cairn 3



Figure 8: Stone settings roughly forming a square 2m x 2m

Cairn 4



Figure 9: Stones are densely packed into an oval shape 2 m x 1 m

Cairn 5



Figure 10: Outer stones are laid in a circle 2.4 m in diameter

No 6



Figure 11. An isolated stone looking like a headstone

No 7



Figure 12. An isolated stone which looks like a headstone

4. RECOMMENDATIONS

The stone features will be investigated by means of an archaeological excavation.