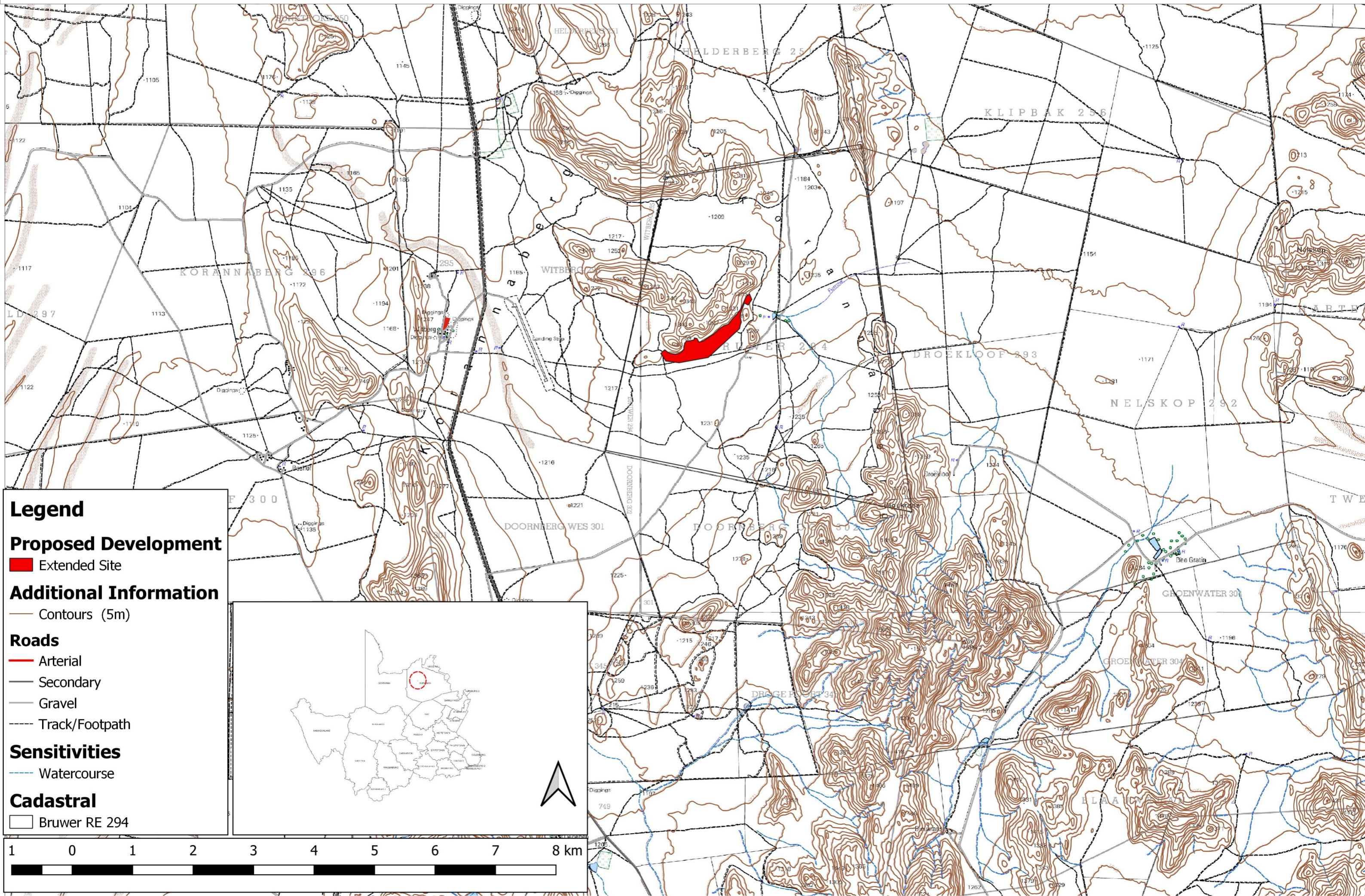


## Appendix A: Maps

## Annexure A: Locality Map



# Locality Map - New Tented Camp (Tswalu Camp 3) on the Farm Bruwer 294 and Expansion of the Staff Accommodation on the Farm Witberg 295, Tswalu Kalahari Reserve, Northern Cape.



**Legend**

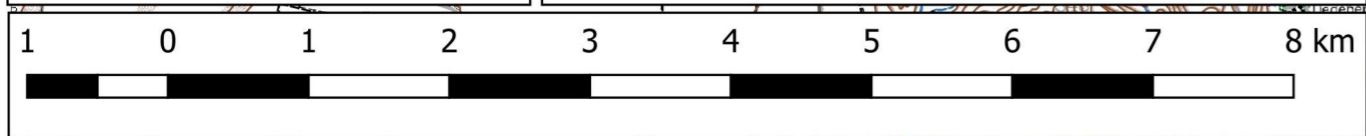
**Proposed Development**  
Extended Site

**Additional Information**  
Contours (5m)

**Roads**  
Arterial  
Secondary  
Gravel  
Track/Footpath

**Sensitivities**  
Watercourse

**Cadastral**  
Bruwer RE 294

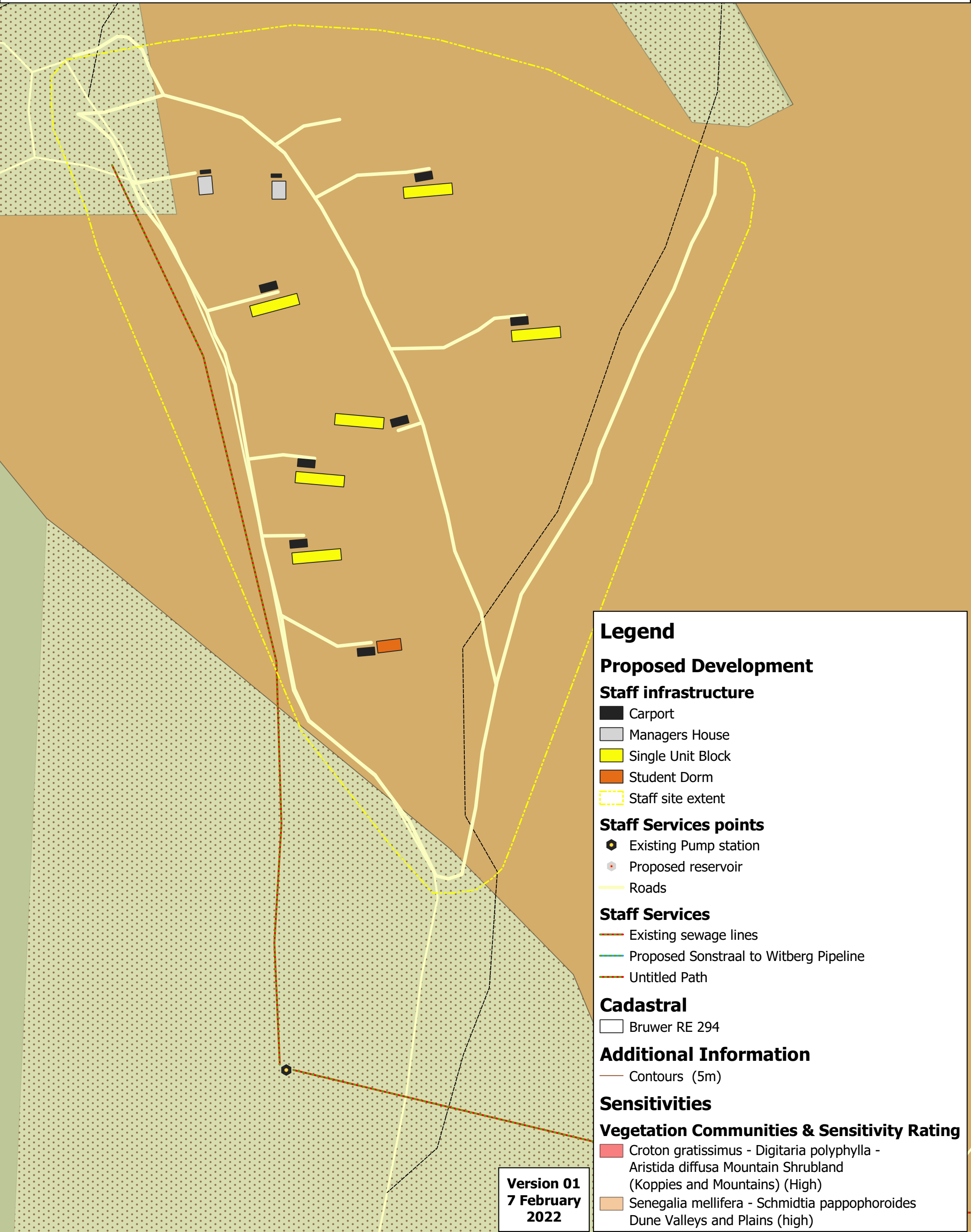




## Annexure B: Layout and Sensitivity Map



# Layout and Sensitivity Map - Proposed Staff Accommodation Expansion on the Farm Witberg 295, Tswalu Kalahari Reserve, Northern Cape.



**Legend**

**Proposed Development**

**Staff infrastructure**

- Carport
- Managers House
- Single Unit Block
- Student Dorm
- - - Staff site extent

**Staff Services points**

- Existing Pump station
- Proposed reservoir
- Roads

**Staff Services**

- - - Existing sewage lines
- - - Proposed Sonstraal to Witberg Pipeline
- - - Untitled Path

**Cadastral**

- Bruwer RE 294

**Additional Information**

- - - Contours (5m)

**Sensitivities**

**Vegetation Communities & Sensitivity Rating**

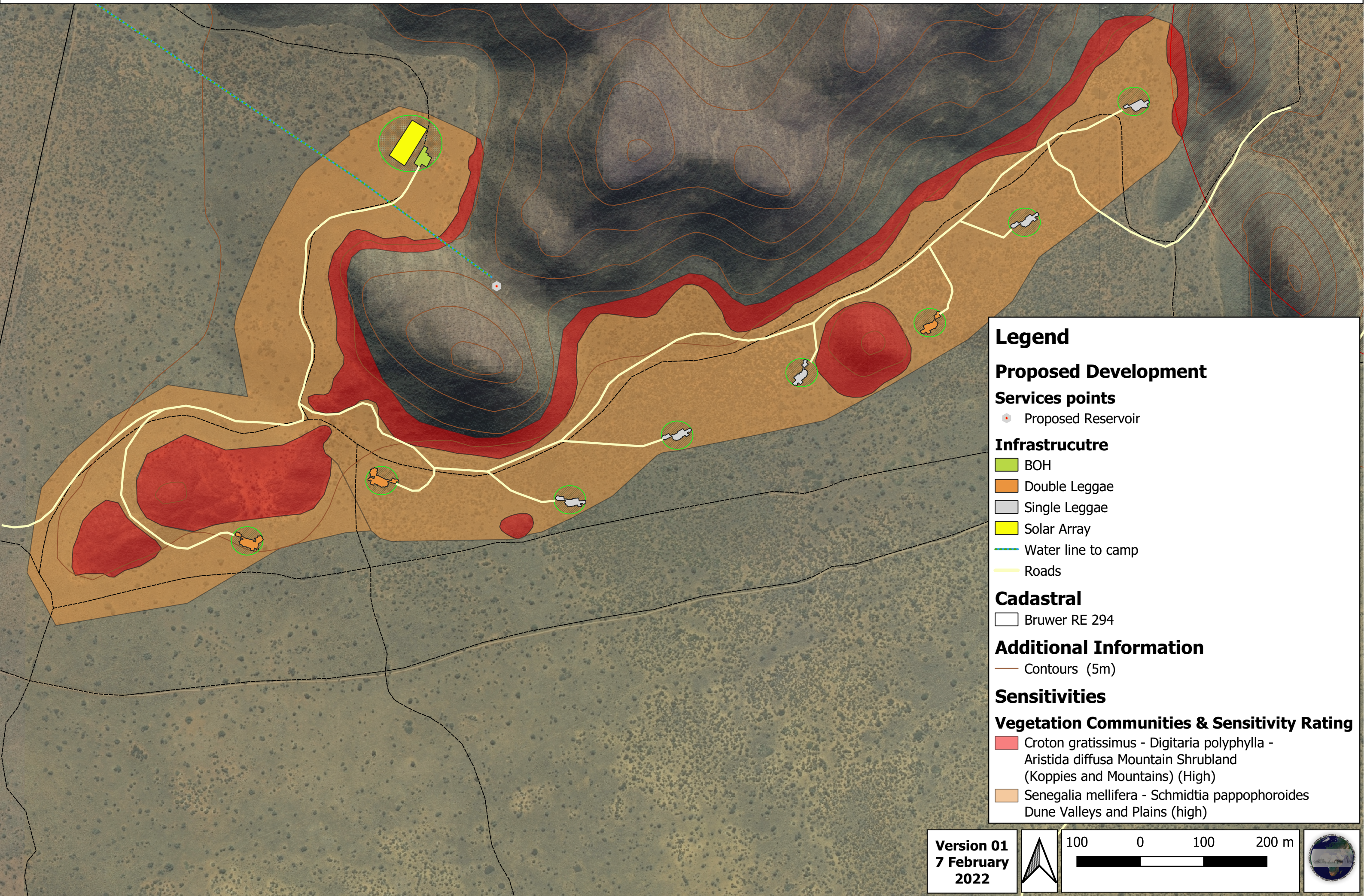
- Croton gratissimus - Digitaria polyphylla - Aristida diffusa Mountain Shrubland (Koppies and Mountains) (High)
- Senegalia mellifera - Schmidtia pappophoroides Dune Valleys and Plains (high)

**Version 01**  
**7 February**  
**2022**





# Layout and Sensitivity Map - Proposed New Tented Camp on the Farm Bruwer 294, Tswalu Kalahari Reserve, Northern Cape.



**Legend**

**Proposed Development**

**Services points**

- Proposed Reservoir

**Infrastrucutre**

- BOH
- Double Leggae
- Single Leggae
- Solar Array
- Water line to camp
- Roads

**Cadastral**

- Bruwer RE 294

**Additional Information**

- Contours (5m)

**Sensitivities**

**Vegetation Communities & Sensitivity Rating**

- Croton gratissimus - Digitaria polyphylla - Aristida diffusa Mountain Shrubland (Koppies and Mountains) (High)
- Senegalia mellifera - Schmidtia pappophoroides Dune Valleys and Plains (high)

Version 01  
7 February  
2022

