

APPENDIX D – BIODIVERSITY OVERLAY MAP



Adams BESS Biodiversity Map

Legend

- Rivers
- Proposed Site
- BESS Substation
- Biodiversity types**
 - Critical Biodiversity Area Two
 - Ecological Support Area
 - Other Natural Areas
- High Voltage Connections**
 - HV line connection to Eskom Substation (OPT1)
 - HV connection loop-in & loop-out (OPT2)



0 1 2 km



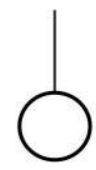
Scale: 1:50000
Datum: WGS 84
Date Created: October 2022
Created by: Luke Saunders
Contact: luke@ncc-group.co.za



Adams BESS Freshwater Map

Legend

- Rivers
- Proposed Site
- BESS Substation
- Hydrology Areas
 - Dry Pan
 - Dry Water Course
- High Voltage Connections
 - HV line connection to Eskom Substation (OPT1)
 - HV connection loop-in & loop-out (OPT2)



0 1 2 km



Scale: 1:50000
Datum: WGS 84
Date Created: October 2022
Created by: Luke Saunders
Contact: luke@ncc-group.co.za

Adams BESS Opportunities and Constraints Map: Connection to the existing PV Substation

Legend

- Medium Ecological Sensitivity
- Medium-High Ecological Sensitivity

Existing Infrastructure

- Existing Roads
- Existing Voltage Line
- Existing PV Facility
- Existing Substation

Proposed Infrastructure

- Proposed Line
- BESS and Substation
- Proposed Line Servitude



0 250 500 m



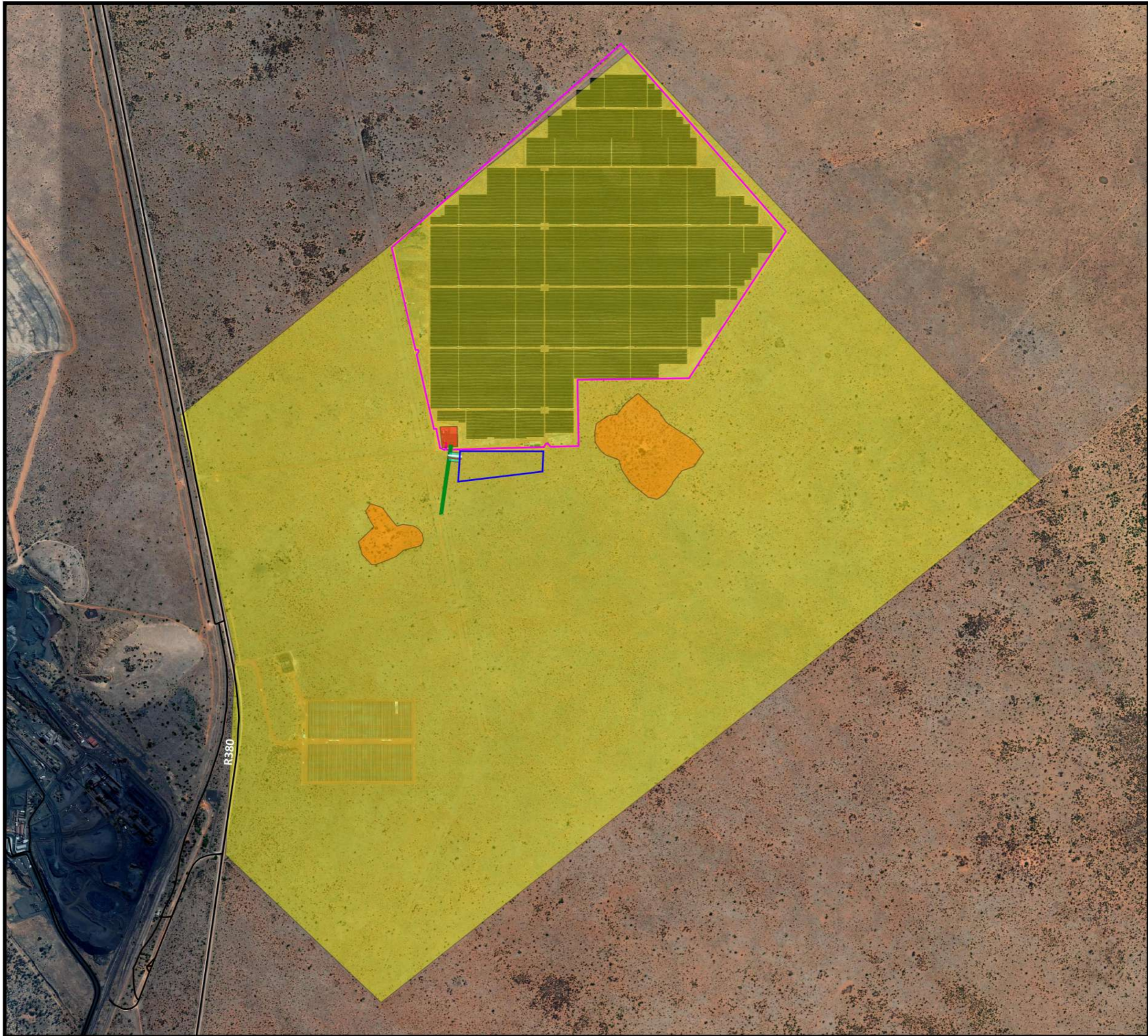
Scale: 1:12000

Datum: WGS 84

Date Created: October 2022

Created by: Luke Saunders

Contact: lukes@ncc-group.co.za



**Adams BESS Opportunities
and Constraints Map:
Connection to the existing
loop-in and Loop-out Lines**

Legend

- Medium Ecological Sensitivity
- Medium-High Ecological Sensitivity

Existing Infrastructure

- Existing Roads
- Existing Voltage Line
- Existing PV Facility
- Existing Substation

Proposed Infrastructure

- Proposed Loop-in
- Proposed Loop-out
- BESS and Substation
- Proposed Line Servitude



0 250 500 m



Scale: 1:12000
Datum: WGS 84
Date Created: October 2022
Created by: Luke Saunders
Contact: lukes@ncc-group.co.za