

***NATURA VIVA cc***  
***Palaeontological Impact Assessments & Heritage Management,***  
***Natural History Education, Tourism, Research***

**Attn: HUMANSRUS SOLAR 4 (PTY) LTD**  
**Registration number: 2015/337639/07**

**Date: 31 August 2020**

**Palaeontological Heritage Resources Comment:**

**PROPOSED BATTERY ENERGY STORAGE SYSTEM FOR THE AUTHORISED  
HUMANSRUS SOLAR 4 PV FACILITY ON FARM 147 (HUMANSRUS) NEAR  
COPPERTON, SIYATHEMBA MUNICIPALITY, NORTHERN CAPE**

A palaeontological heritage assessment (PIA) of the Humansrus Solar 4 PV Facility on Farm 147, Humansrus near Copperton, Siyathemba Municipality, Northern Cape was submitted by the author (Almond 2016) and concluded that, given the low palaeontological sensitivity of the bedrocks and near-surface sediments within the project area (1) the proposed development was unlikely to have a significant impact on local fossil heritage resources and (2) pending the potential discovery of significant new fossils remains before or during construction, exemption from further specialist palaeontological studies and mitigation should be granted for this development.

The Humansrus Solar 4 PV Facility, comprising a 75 MW commercial PV energy facility and associated infrastructure, has been granted Environmental Authorisation (EA) (DEA Ref No: 14/12/16/3/3/2/887, dated May 2017). Subsequently, a Part 1 amendment has been authorised to extend the validity period of the EA and increase the generation (contracted) capacity to 100MW. The applicant, Humansrus Solar 4 (Pty) Ltd, now intends to apply for a further Amendment to the EA to make provision for a Battery Energy Storage System (BESS) within the authorised project footprint and adjacent to the on-site sub-station (dark grey rectangle in Figure 1). The footprint of the BESS will be up to 2 hectares.

Given the generally low palaeontological sensitivity of the Humansrus Solar 4 PV Facility project area, it is concluded that:

- the inclusion of a BESS adjacent to the on-site substation will not change the nature or significance of any of the impacts assessed in the original PIA study;
- the proposed BESS is unlikely to result in any additional impacts that were not previously assessed; and
- there are no additional management outcomes or mitigation measures in terms of palaeontological heritage that would be applicable to the proposed BESS.

There are no objections on palaeontological heritage grounds to the proposed amendment of the EA for this solar PV energy facility.

*John E. Almond*

**Dr John E. Almond (palaeontologist)**

***NATURA VIVA cc (Reg. No. 2000/019296/23)***  
**Members: Dr J.E. Almond (British)(Managing), M.L. Tusenius**  
**P.O. Box 12410 Mill Street, CAPE TOWN 8010, RSA**  
**Tel / Fax: +27 (21) 462 3622 E-mail: naturaviva@universe.co.za**

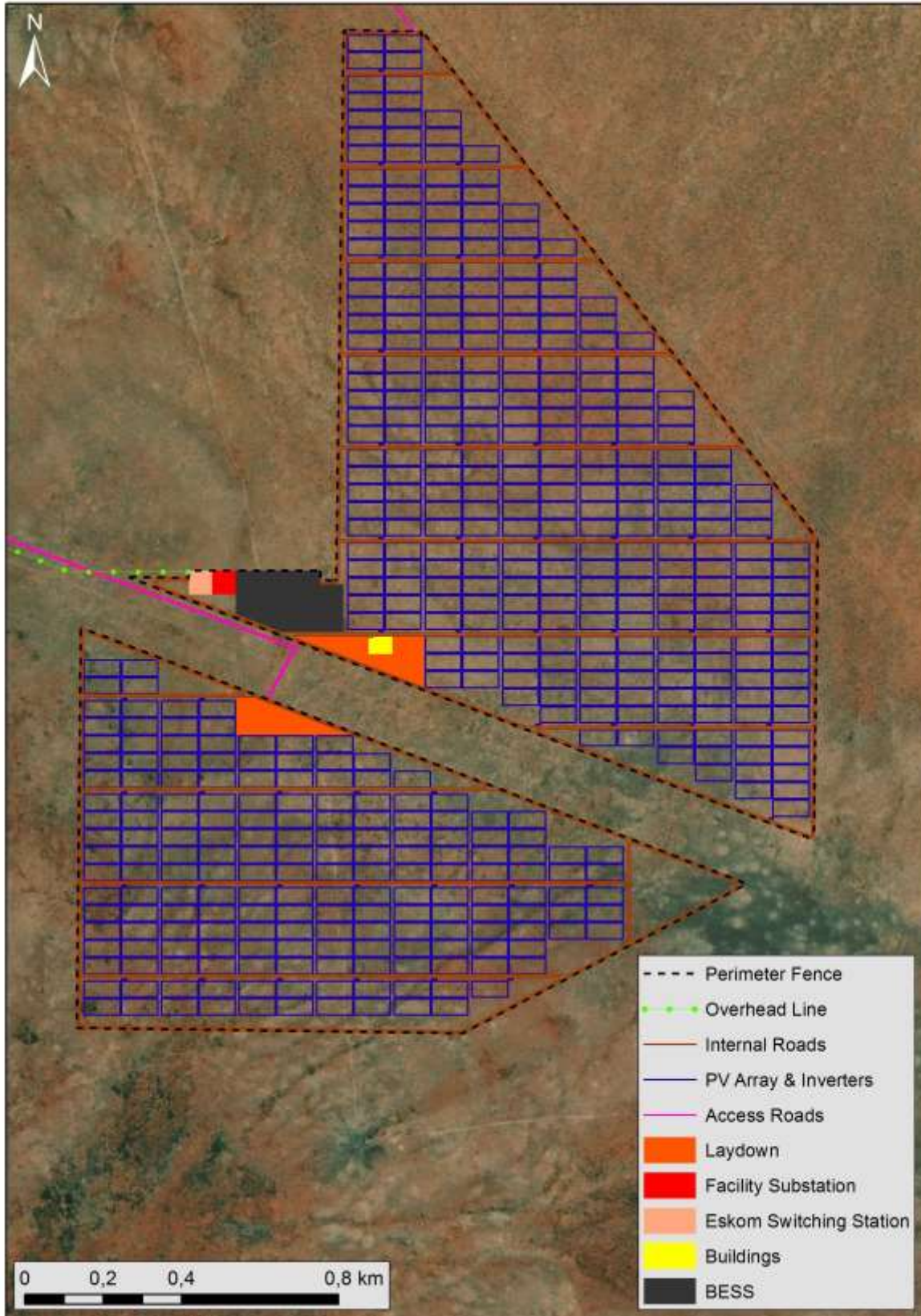


Figure 1: Map showing the layout of the authorised Humansrus Solar 4 PV Facility on Farm 147, Humansrus near Copperton, Northern Cape including the proposed site for the associated BESS (dark grey rectangle) adjacent to the on-site substation (Image provided by Humansrus Solar 4

*NATURA VIVA cc* (Reg. No. 2000/019296/23)  
 Members: Dr J.E. Almond (British)(Managing), M.L. Tusenius  
 P.O. Box 12410 Mill Street, CAPE TOWN 8010, RSA  
 Tel / Fax: +27 (21) 462 3622 E-mail: naturaviva@universe.co.za

**(Pty) Ltd).**

## **REFERENCES**

ALMOND, J.E. 2016. Proposed construction of the Humansrus Solar 4 Alternative Energy Facility on Farm 147, Humansrus near Copperton, Siyathemba Municipality, Northern Cape. Recommended exemption from further palaeontological studies, 8 pp. Natura Viva cc, Cape Town.